

Plate 123 Removable panels for access to underside of cask car (Photograph by RCG&A, 2008)

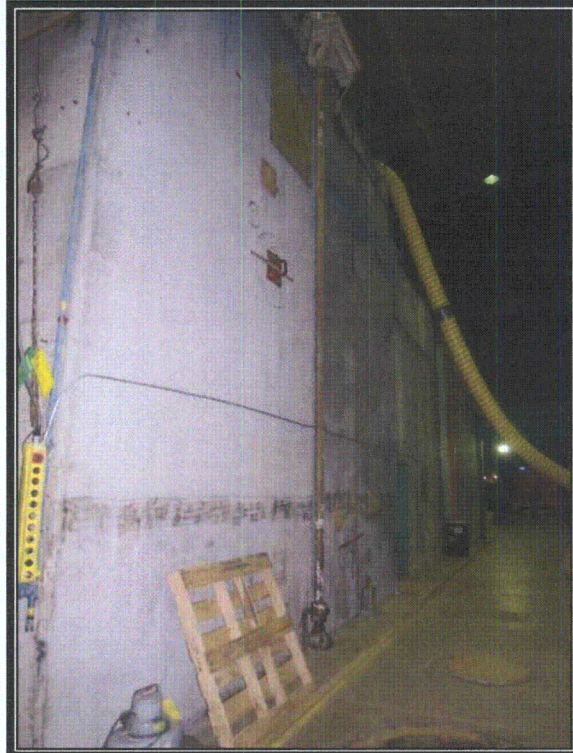


Plate 124 West wall of steam cleaning chamber (Photograph by RCG&A, 2008)



Plate 125 Removable roof section of cut-off pool roof (Photograph by RCG&A, 2008)

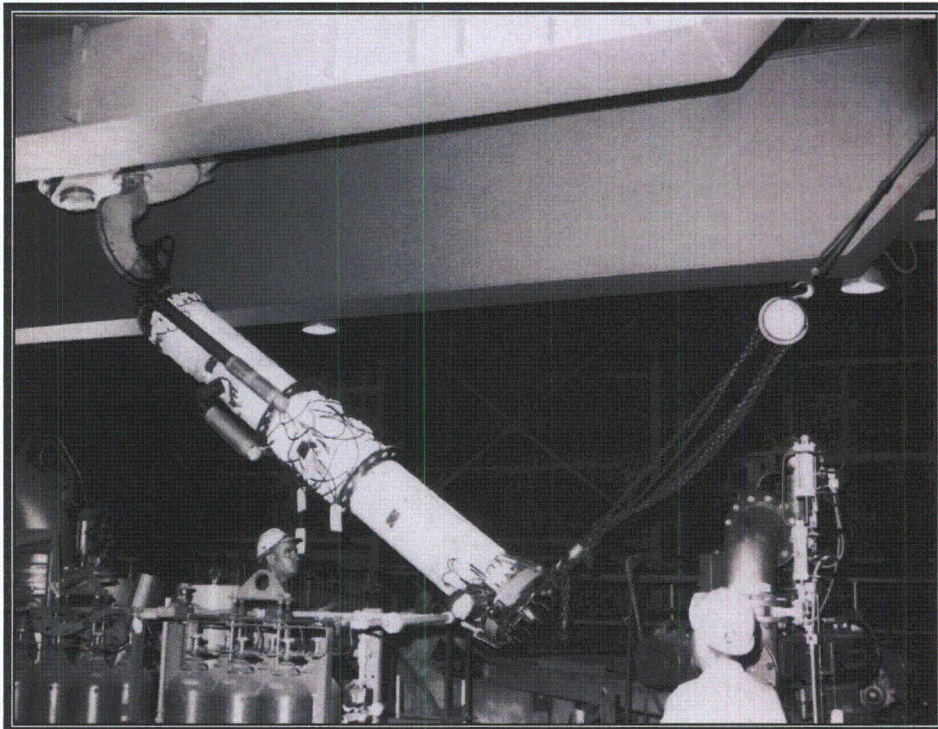


Plate 126 Construction photograph of installation of steam cleaning chamber (Courtesy DECo)



Plate 127 Removable roof section of steam cleaning chamber (Photograph by RCG&A, 2008)



Plate 128 Location of subassembly test station (Photograph by RCG&A, 2008)

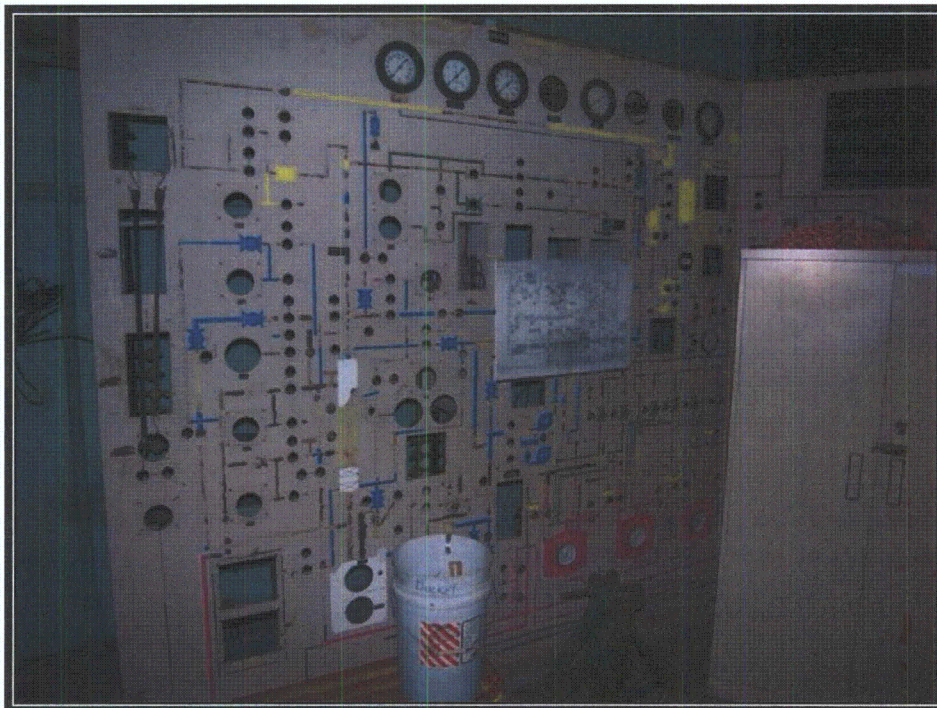


Plate 129 FARB control panel (Photograph by RCG&A, 2008)

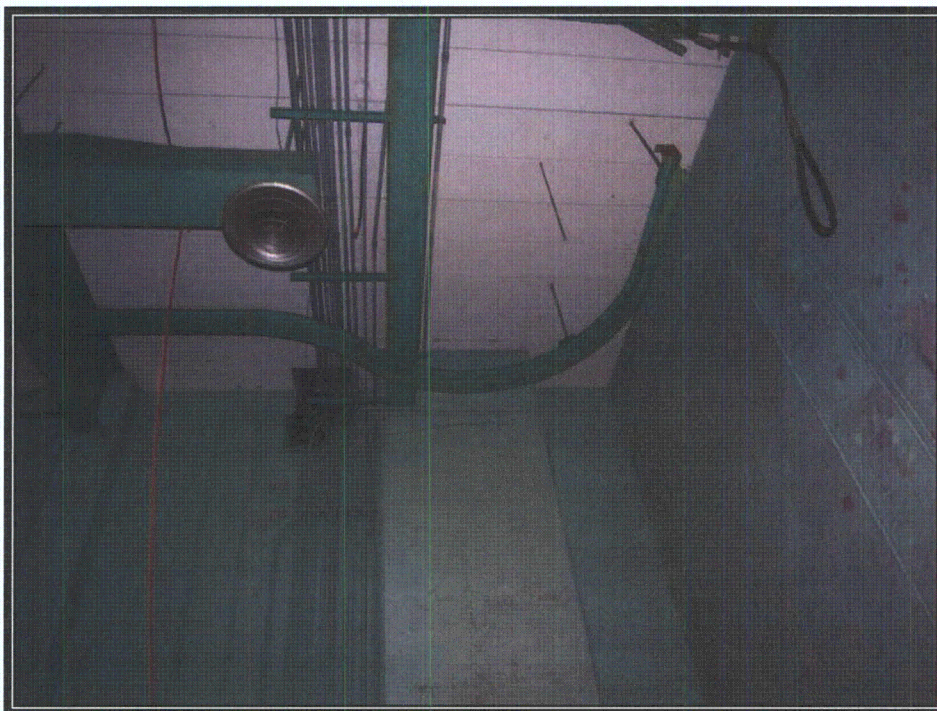


Plate 130 Monorail in new fuel receiving area (Photograph by RCG&A, 2008)

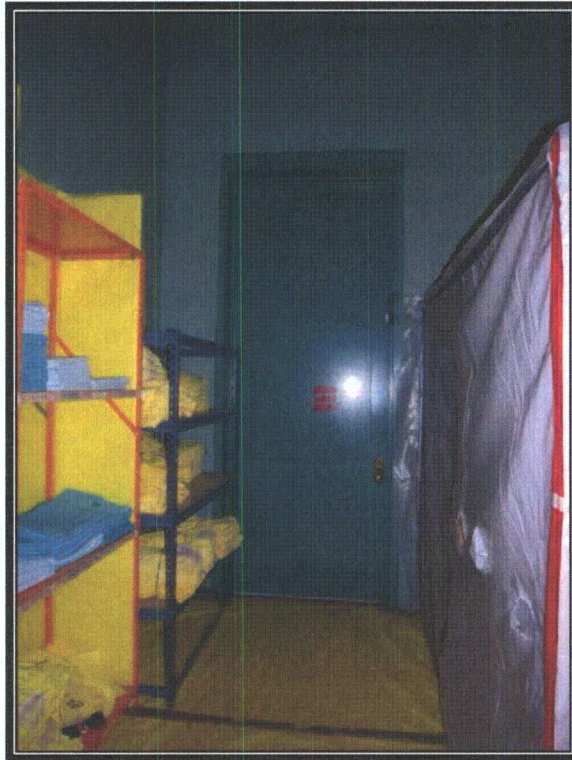


Plate 131 Over-height door leading to new fuel storage room (Photograph by RCG&A, 2008)



Plate 132 Index marks on wall of new fuel storage room (Photograph by RCG&A, 2008)

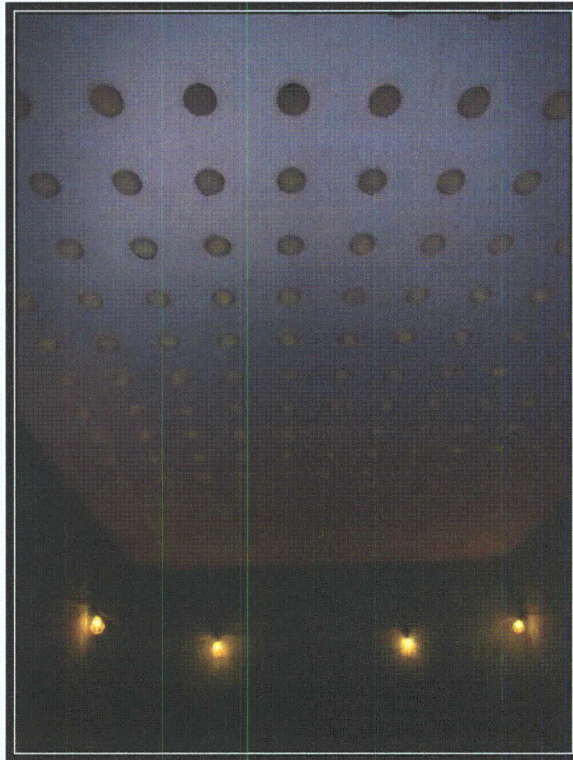


Plate 133 Underside of floor of new fuel storage room (Photograph by RCG&S, 2008)

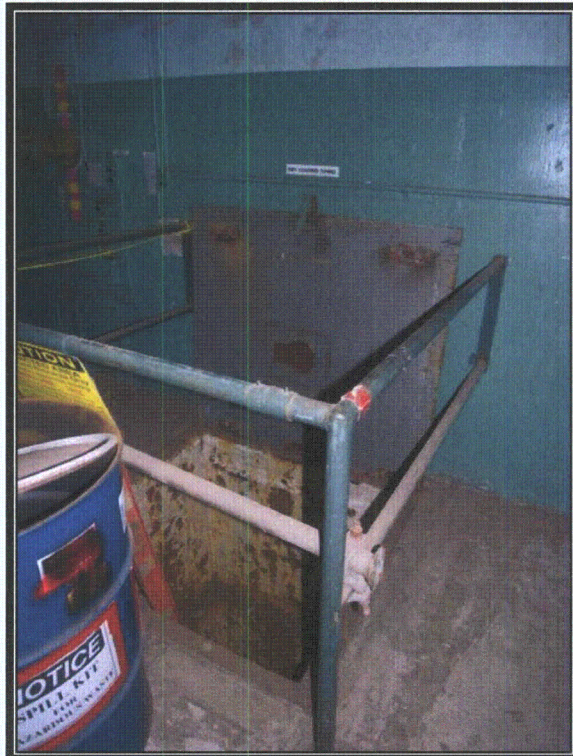


Plate 134 Access hatch to dry-loading tunnel (Photograph by RCG&A, 2008)



Plate 135 View of sodium service building looking east (Photograph by RCG&A, 2008)



Plate 136 East wall of sodium service building showing upper, concrete block section (Photograph by RCG&A, 2008)

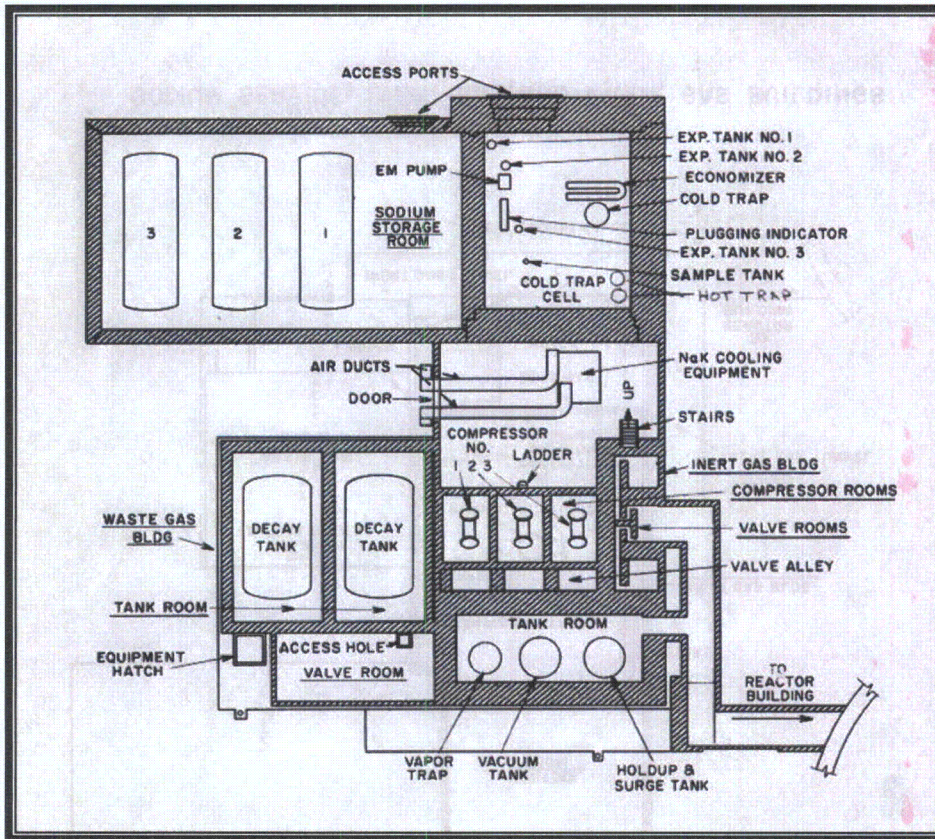


Plate 137 Plan of sodium service building (Courtesy DECo)

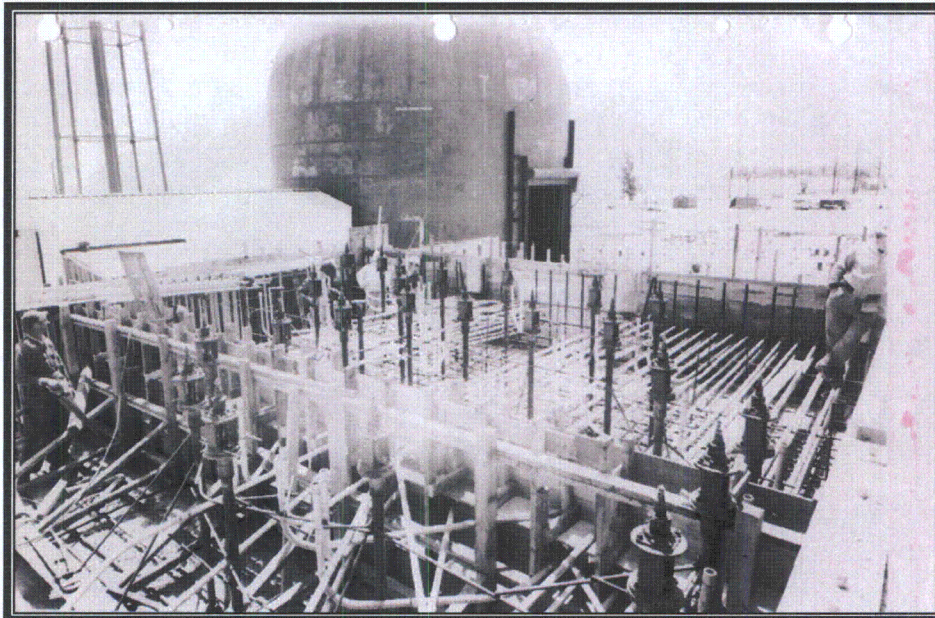


Plate 138 Construction photograph of pouring roof of sodium service building (Courtesy DECo)



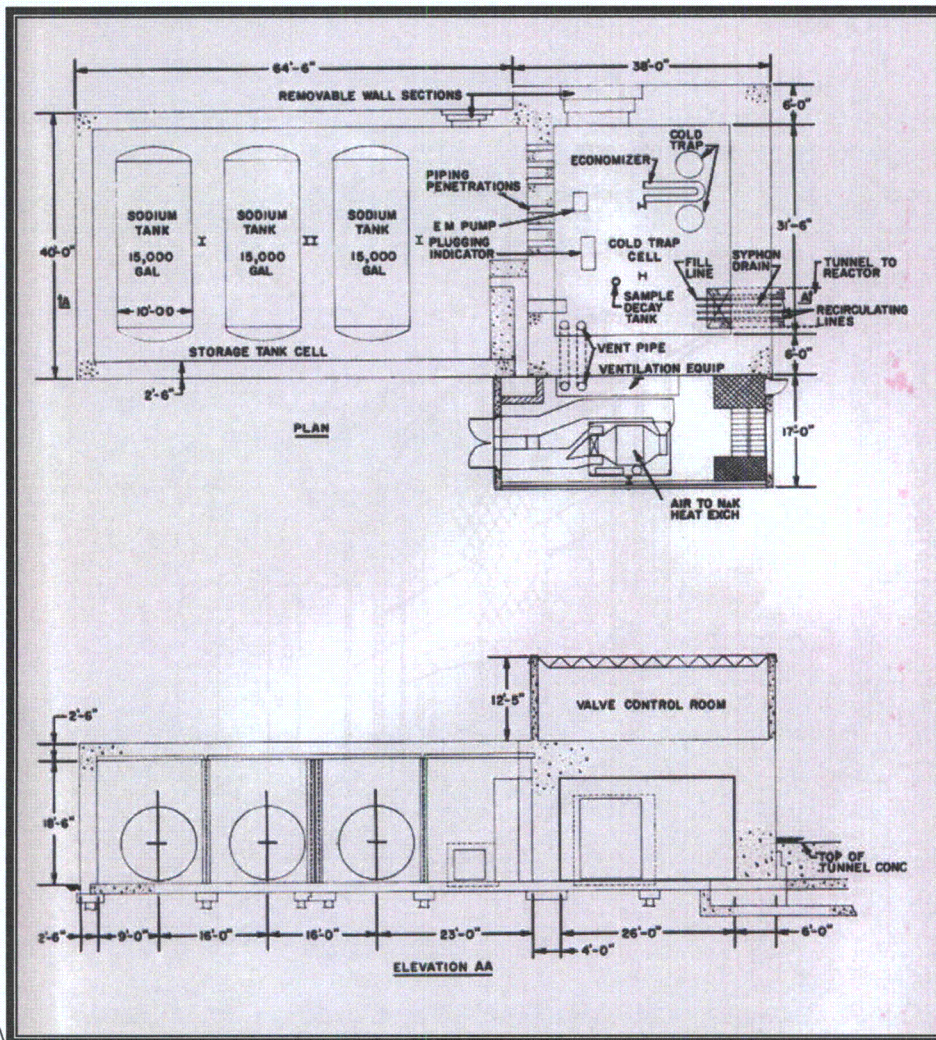


Plate 139 Plan and section of sodium storage and cold trap areas (Courtesy DECO)

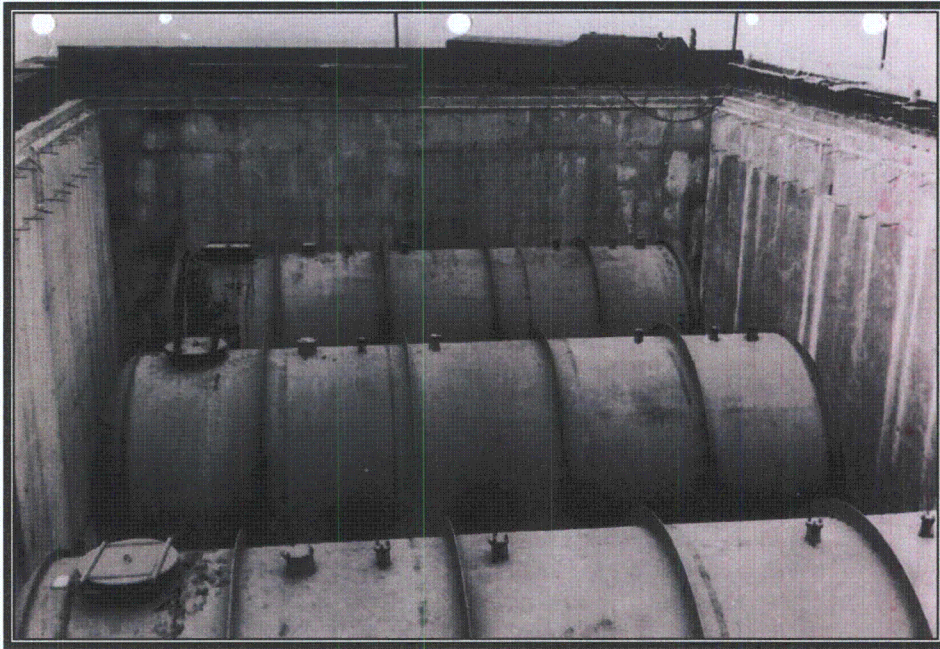


Plate 140 Sodium storage tanks in place prior to pouring roof (Courtesy DECo)



Plate 141 Reinforced instrument port in north wall of sodium service building (Photograph by RCG&A, 2008)



Plate 142 Access portal to building (Photograph by RCG&A, 2008)

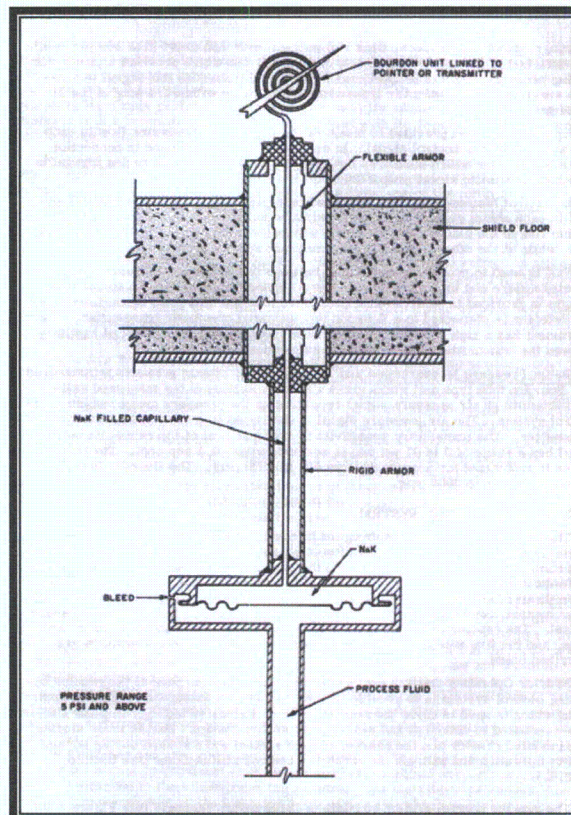


Plate 143 Typical NaK instrument line (Courtesy DECo)

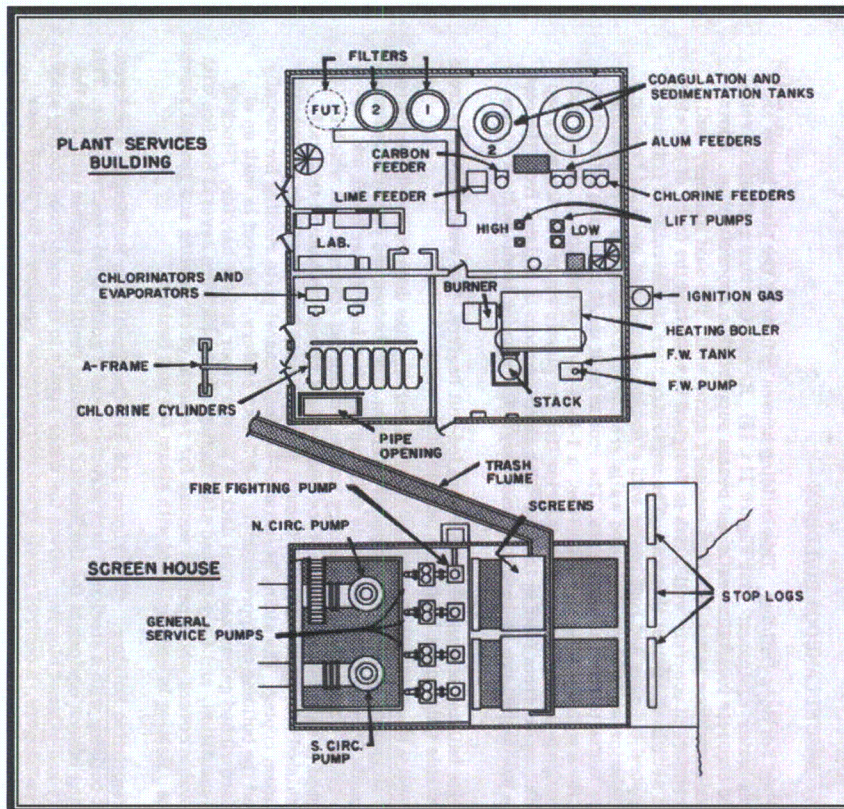


Plate 144 Plans for screen house and plant service building (Courtesy DECo)



Plate 145 View of screen house looking northeast (Photograph by RCG&A, 2008)



Plate 146 View of plant services building looking southeast (Photograph by RCG&A, 2008)

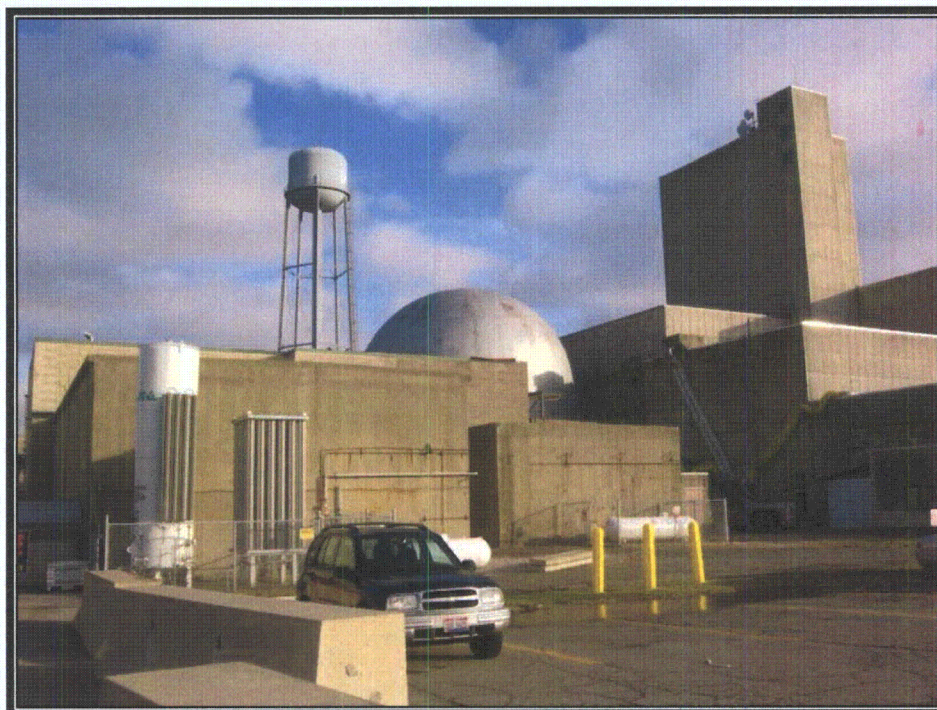


Plate 147 View of plant looking southeast, note water tower (Photograph by RCG&A, 2008)



Plate 148 View of visitor's center looking west (Photograph by RCG&A, 2008)



Plate 149 View of visitor's center looking east (Photograph by RCG&A, 2008)



Plate 150 Construction office looking southwest (Photograph by RCG&A, 2008)



Plate 151 Concrete tank saddles (Photograph by RCG&A, 2008)



Plate 152 Visitor's center sign looking west (Photograph by RCG&A, 2008)



Plate 153 Visitor's center sign looking east (Photograph by RCG&A, 2008)



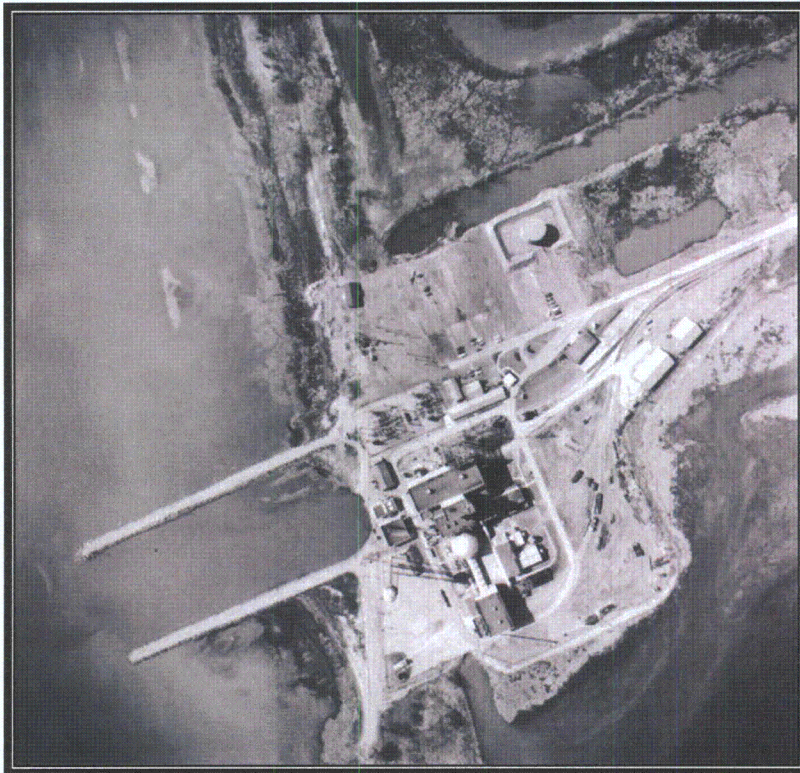


Plate 154 1965 aerial photograph of the Fermi 1 complex. Fermi 2 would later be built on the marshland below (north) of original plant (Courtesy DECo)

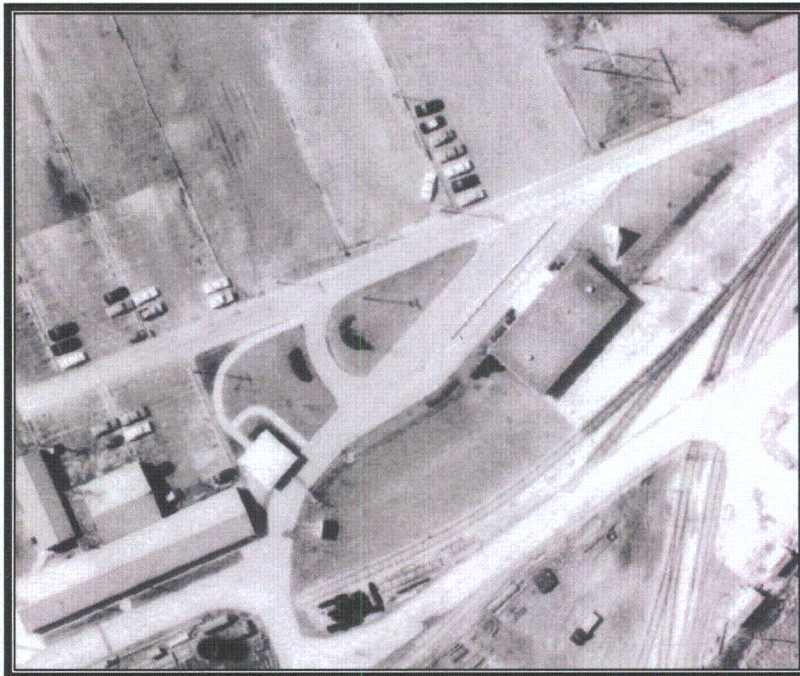


Plate 155 Detail of 1965 aerial, note shadow of tetrahedral sign to the right of the visitor's center (Courtesy DECo)

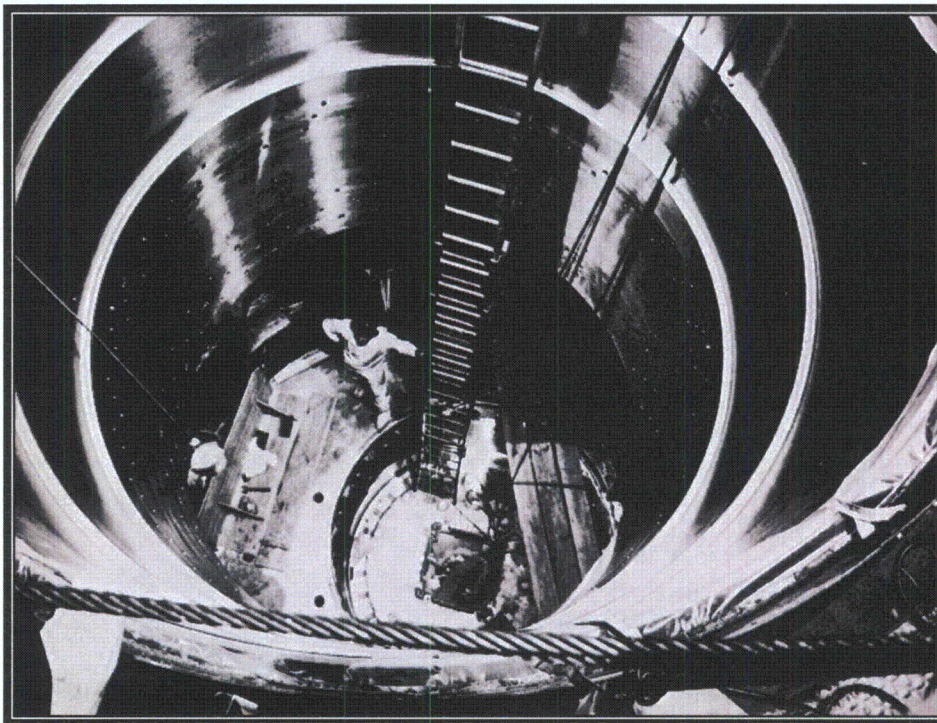


Plate 156 View into reactor vessel. The plate at the bottom of the ladder is the top of the core assembly (Courtesy DECo)

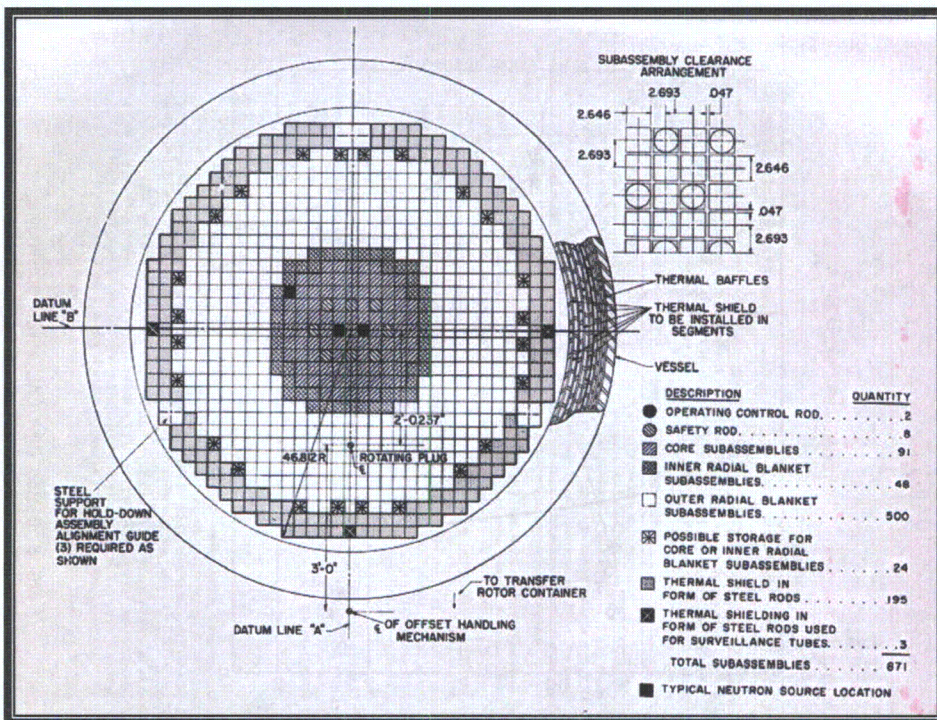


Plate 157 Section of reactor core (Courtesy DECo)

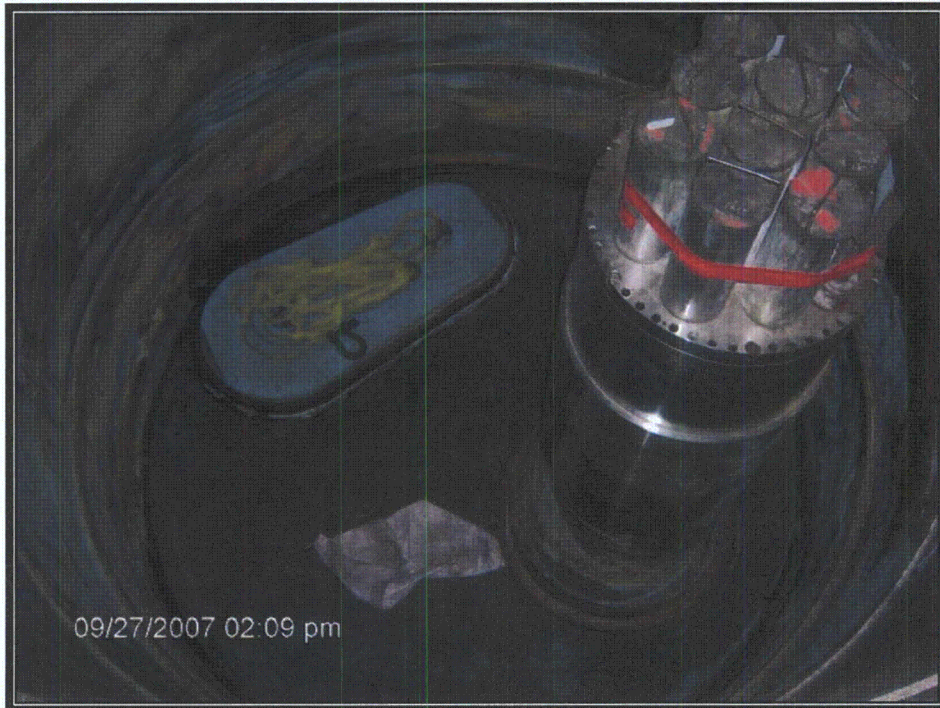


Plate 158 Interior of reactor showing control and safety rod extensions (Courtesy DECo)

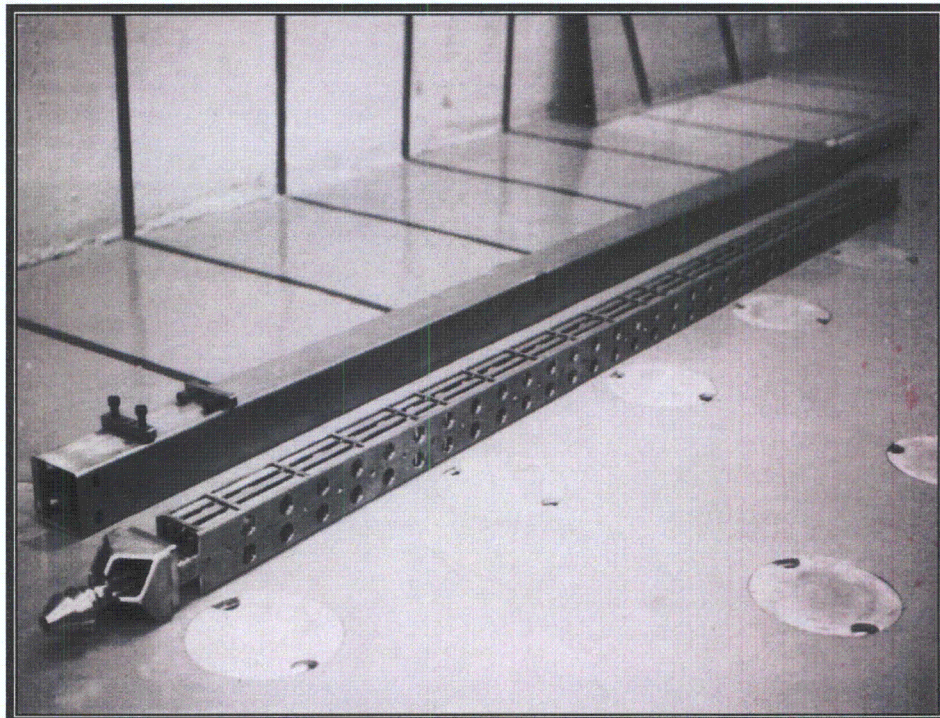


Plate 159 Typical subassembly (Courtesy DECo)

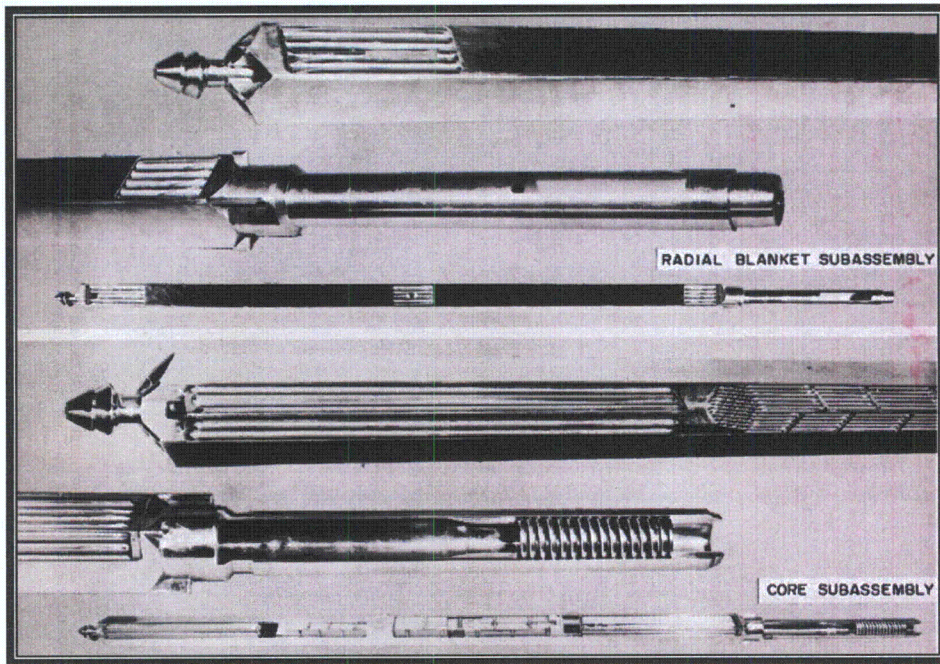


Plate 160 Cut-away of core and blanket subassemblies (Courtesy DECo)

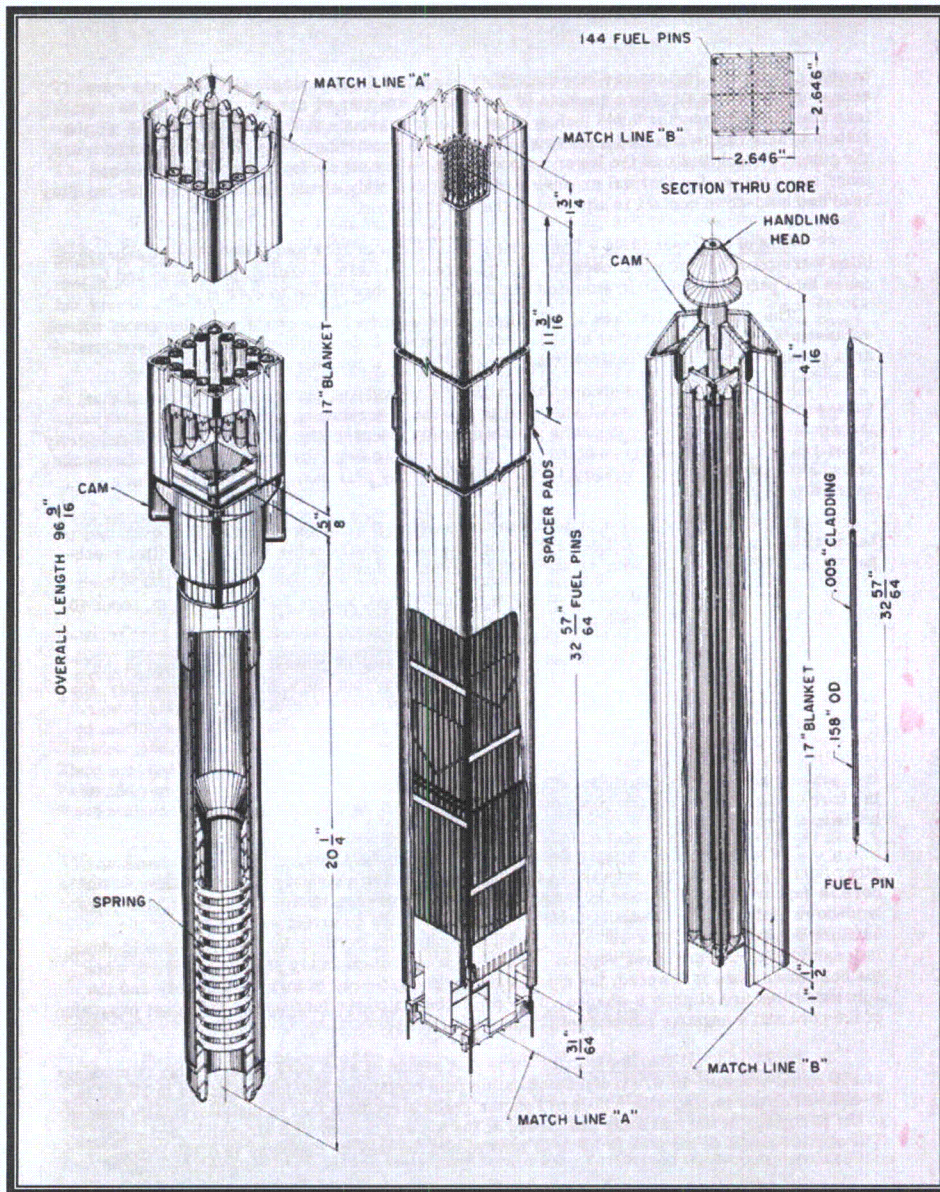


Plate 161 Details of core subassembly (Courtesy DECo)

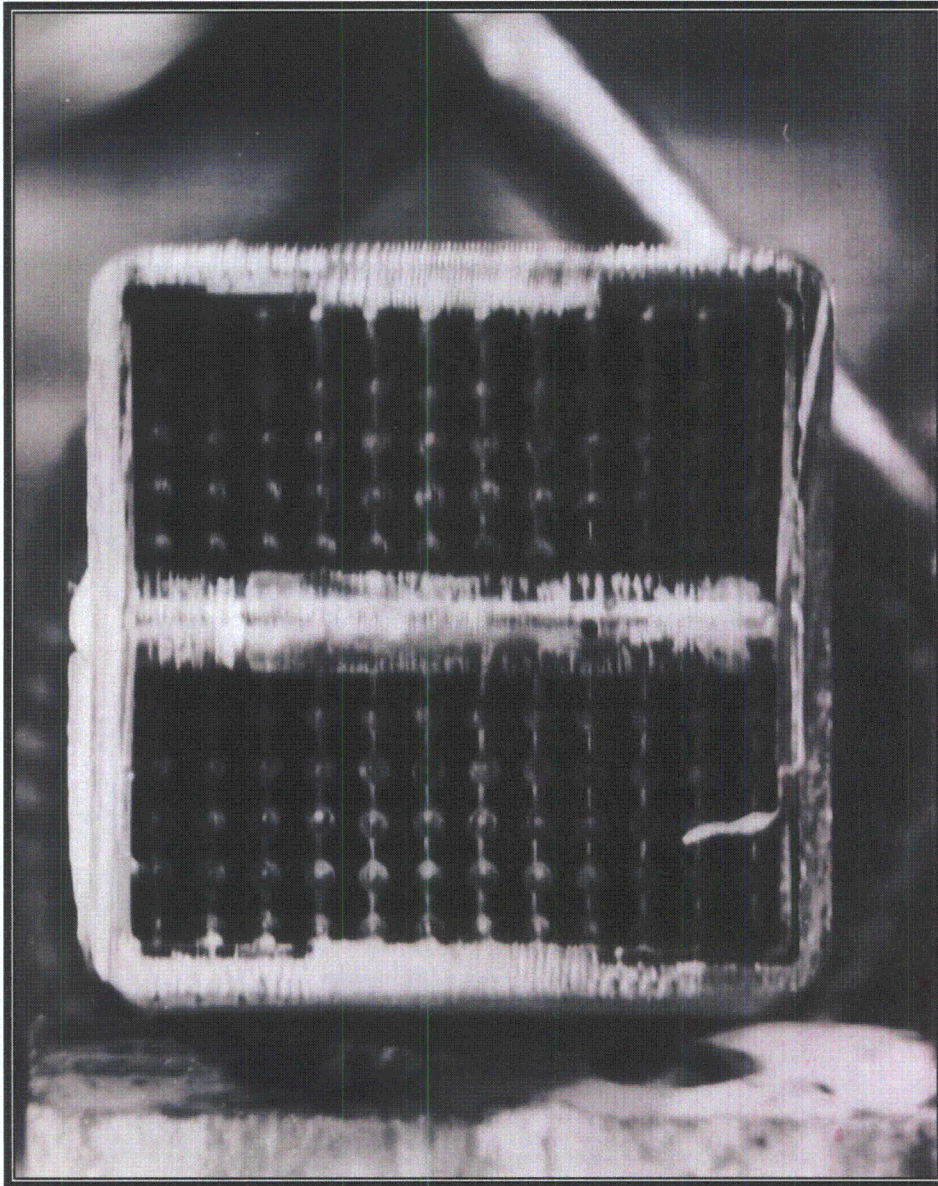


Plate 162 Interior of subassembly showing fuel pins. This is one the subassemblies damaged in the partial core meltdown (Courtesy DECo)

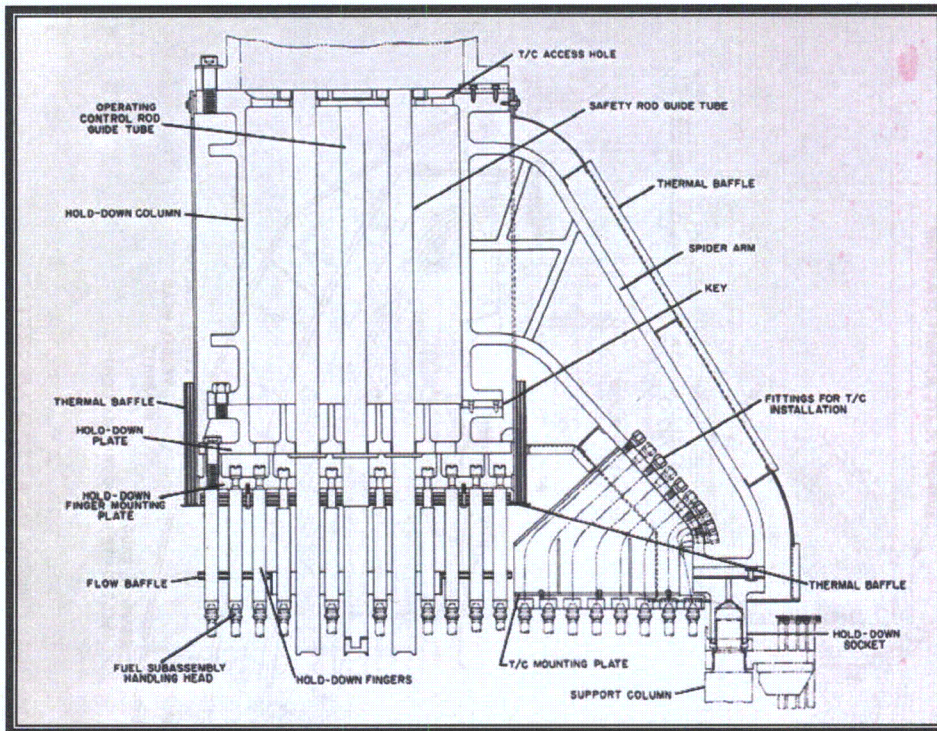


Plate 163 Section of hold down mechanism (Courtesy DECo)

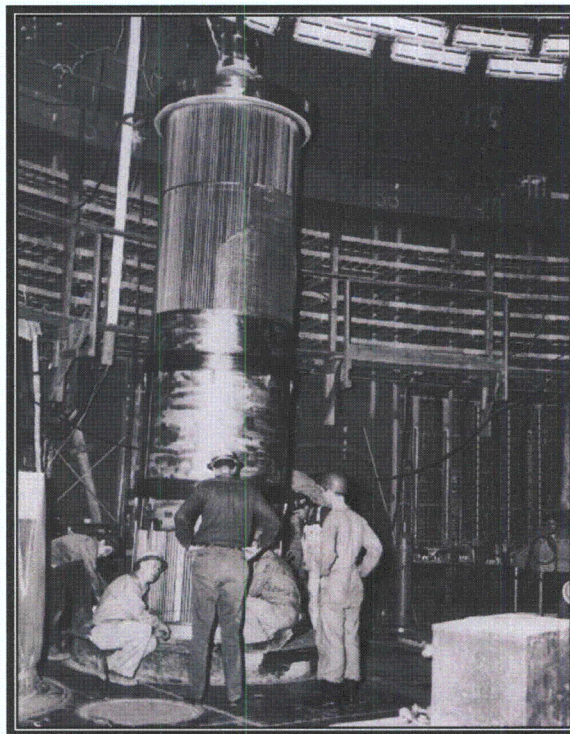


Plate 164 Installation of heat exchanger bundle in reactor building (Courtesy DECo)

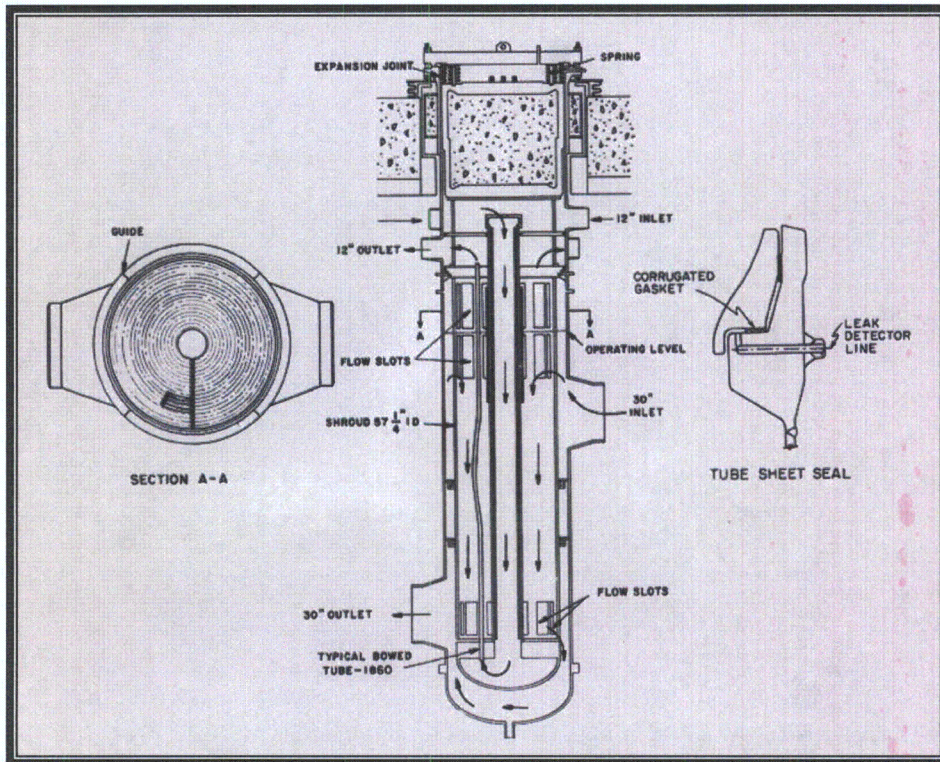


Plate 165 Section of intermediate heat exchanger (Courtesy DECo)

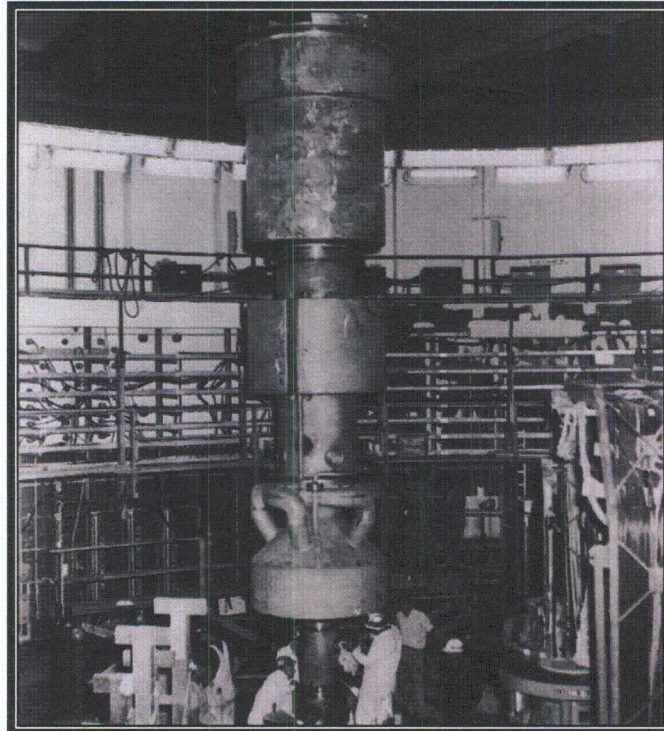


Plate 166 Installing primary sodium pump in containment building (Courtesy DECo)



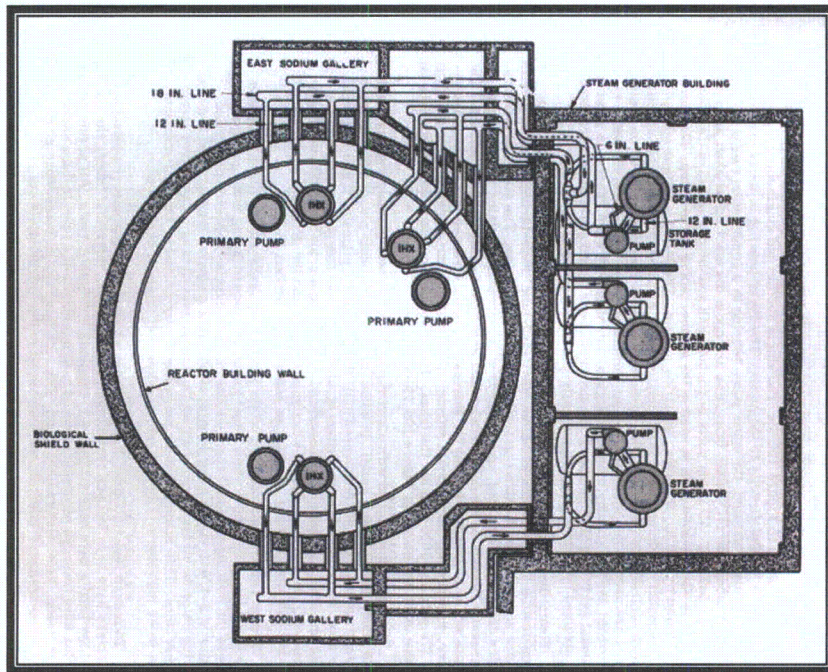


Plate 167 Flow schematic of secondary sodium system (Courtesy DECo)

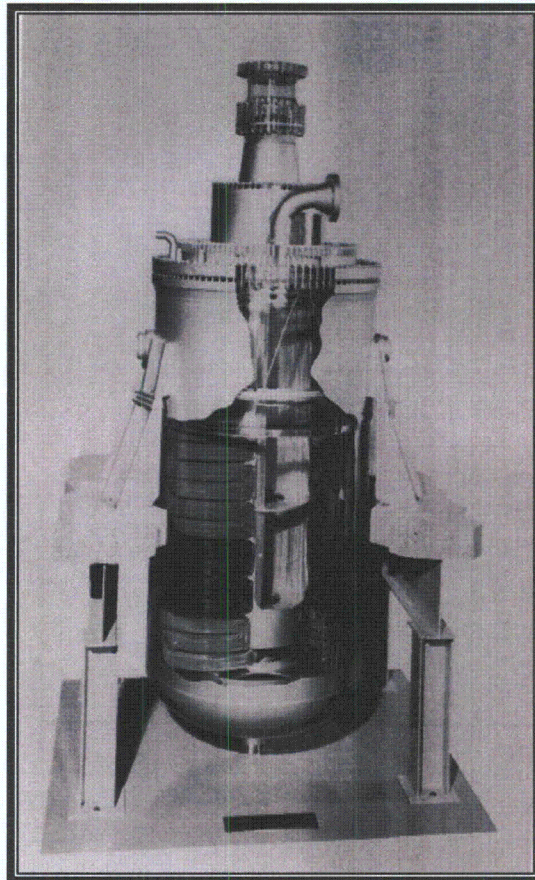


Plate 168 Cut-away of steam generator (Courtesy DECo)

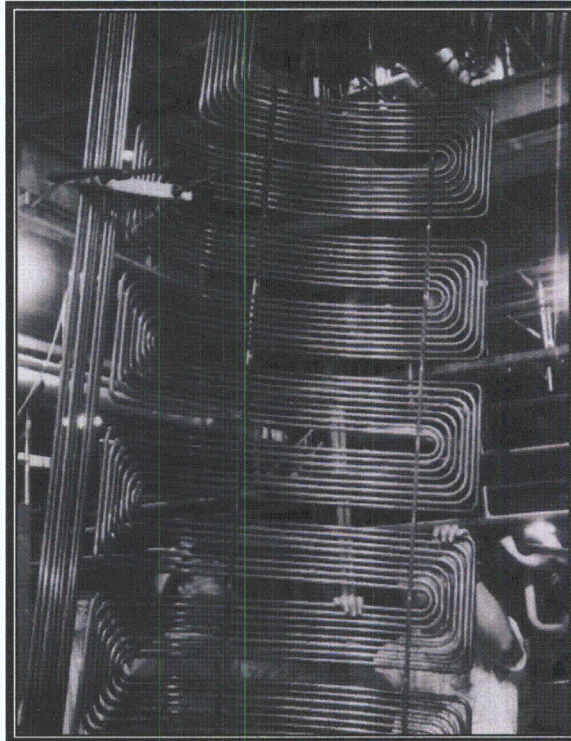


Plate 169 Typical tube bundle section of steam generator (Courtesy DECo)



Plate 170 Main steam line (Photograph by RCG&A, 2008)

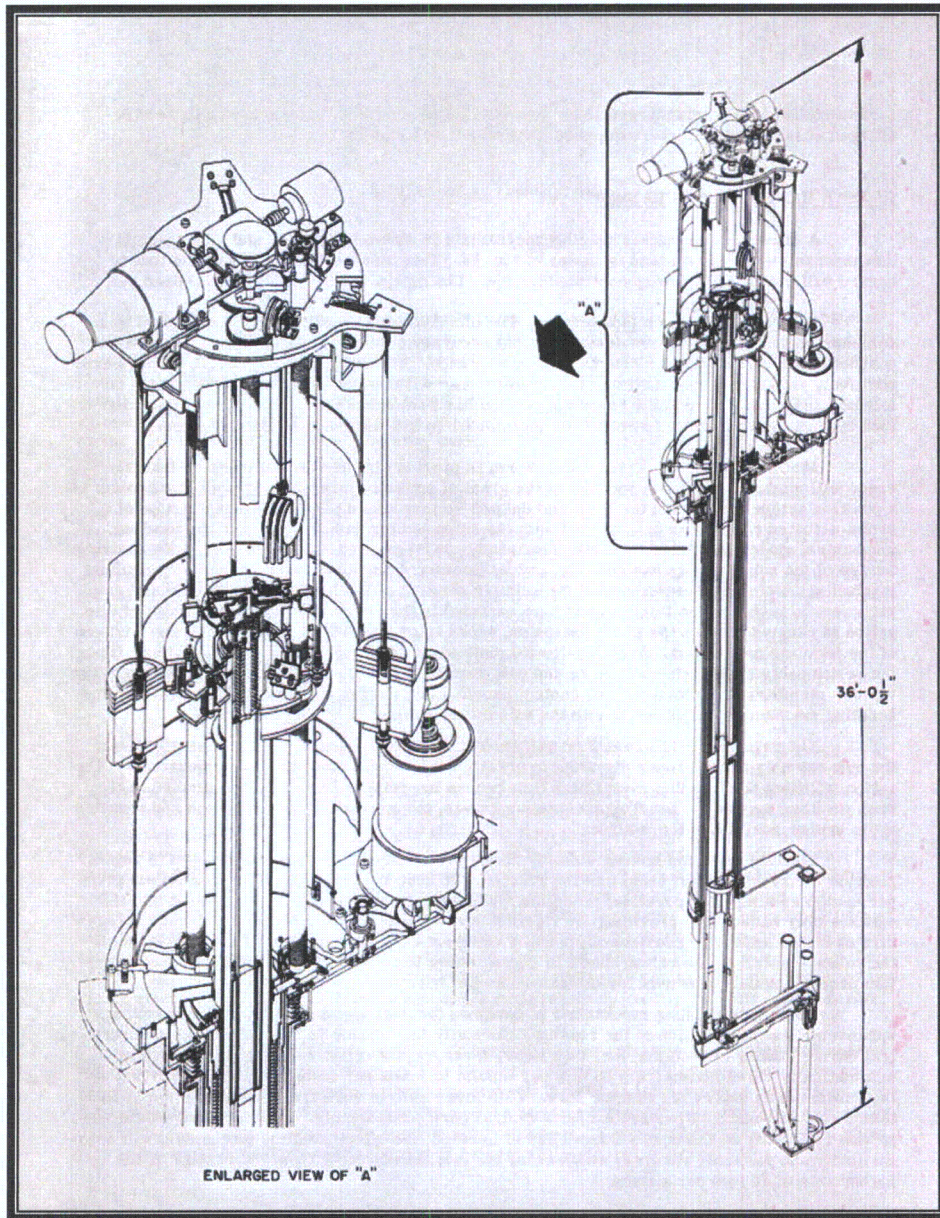


Plate 171 Offset handling mechanism (Courtesy DECo)

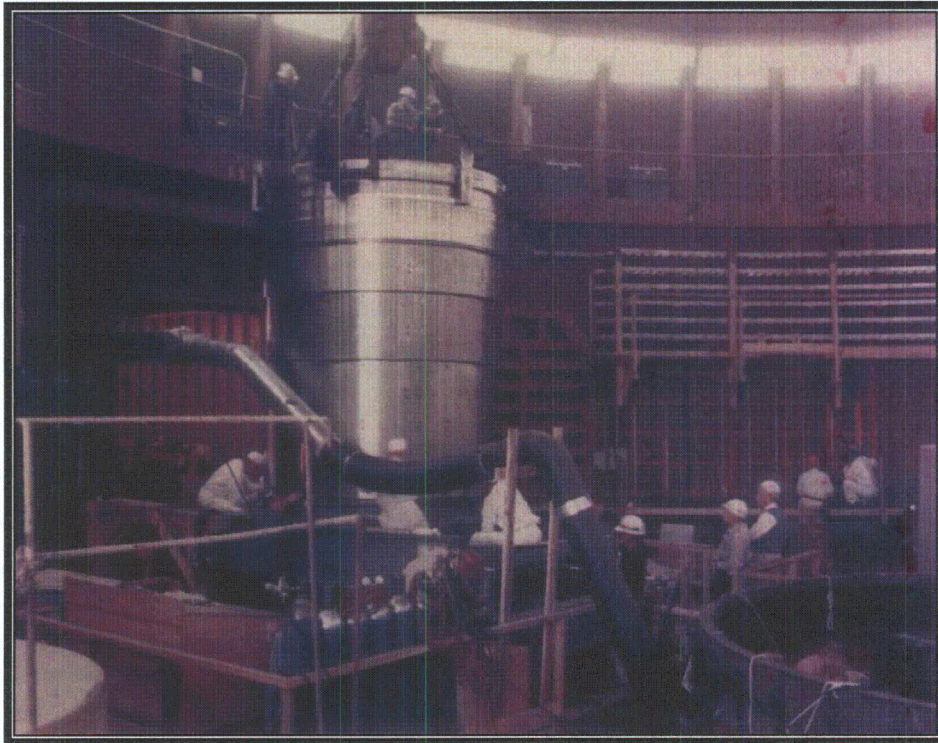


Plate 172 Installation of rotating shield plug (Courtesy DECo)



Plate 173 Rotating shield plug (Photograph by RCG&A, 2008)



Plate 174 Top of reactor. The offset handling mechanism is in front and the hold down device and control/safety rods to the rear (Courtesy DECo)

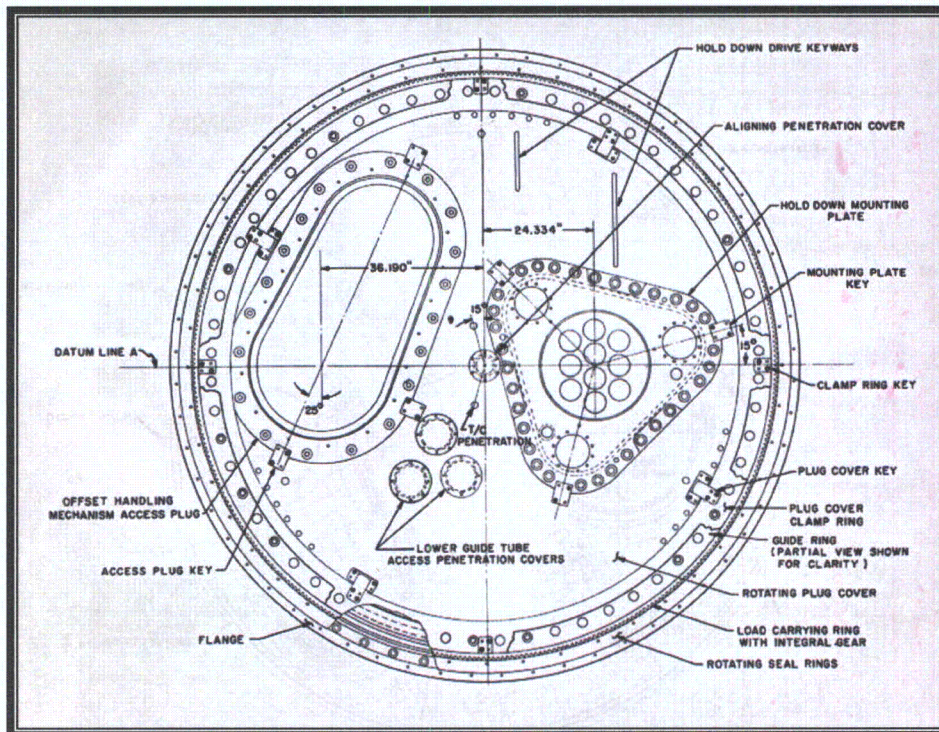


Plate 175 Rotating plug cover (Courtesy DECo)

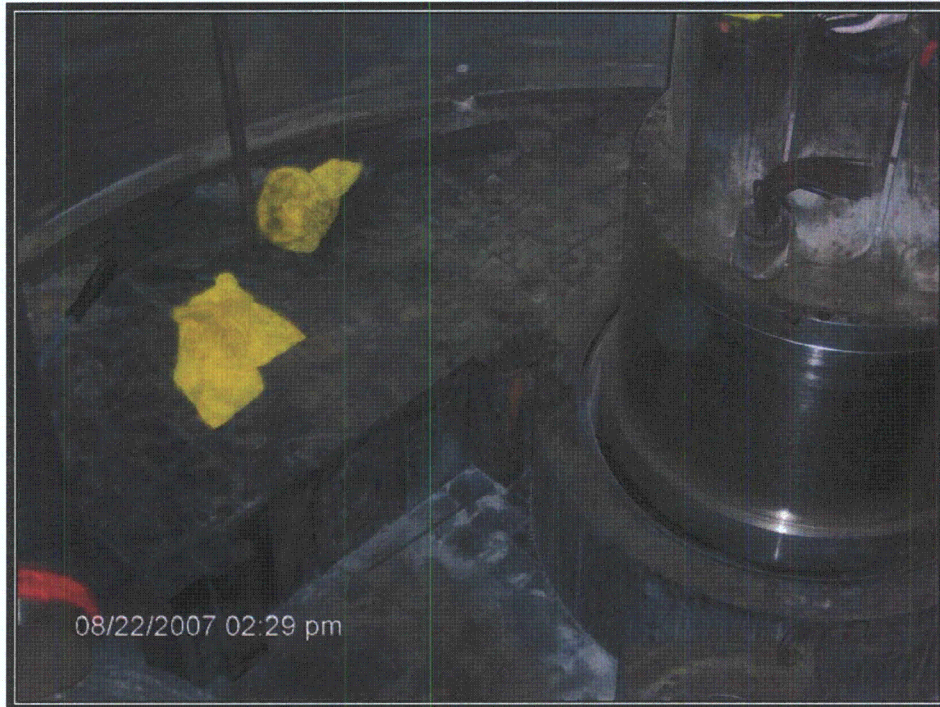


Plate 176 Canned graphite inside rotating shield plug (Courtesy DECo)

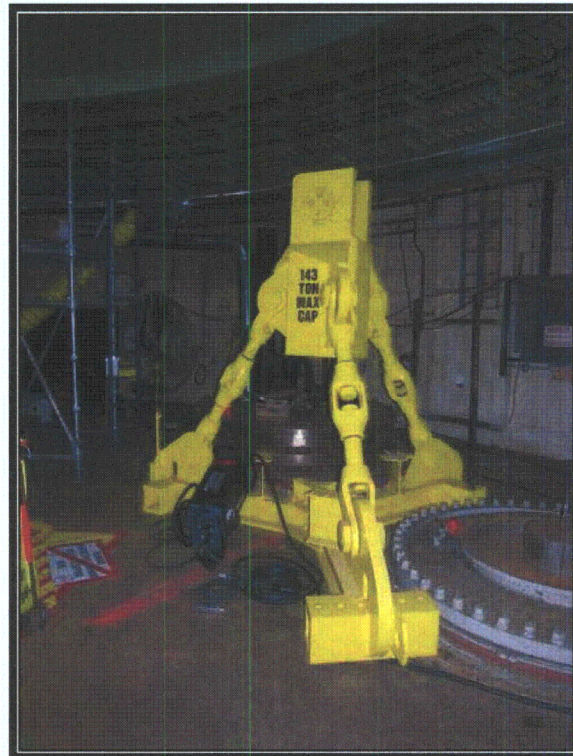


Plate 177 Three-point lifting device for rotating shield plug (Photograph by RCG&A, 2008)

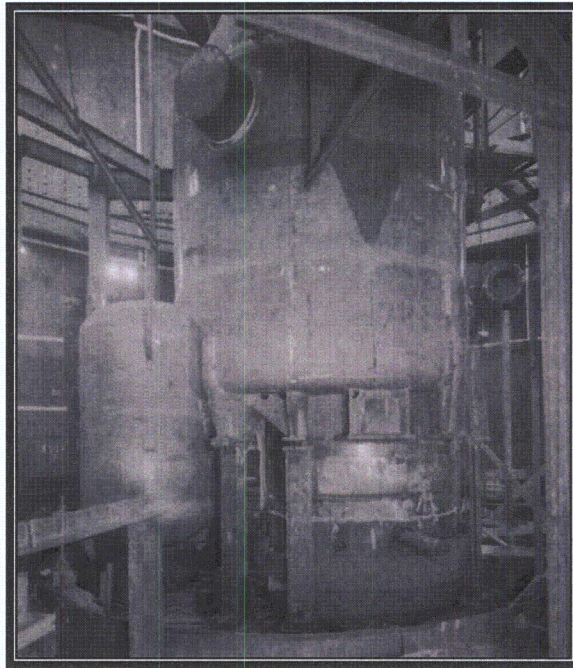


Plate 178 Reactor vessel in containment building showing rotor container to left (Courtesy DECo)

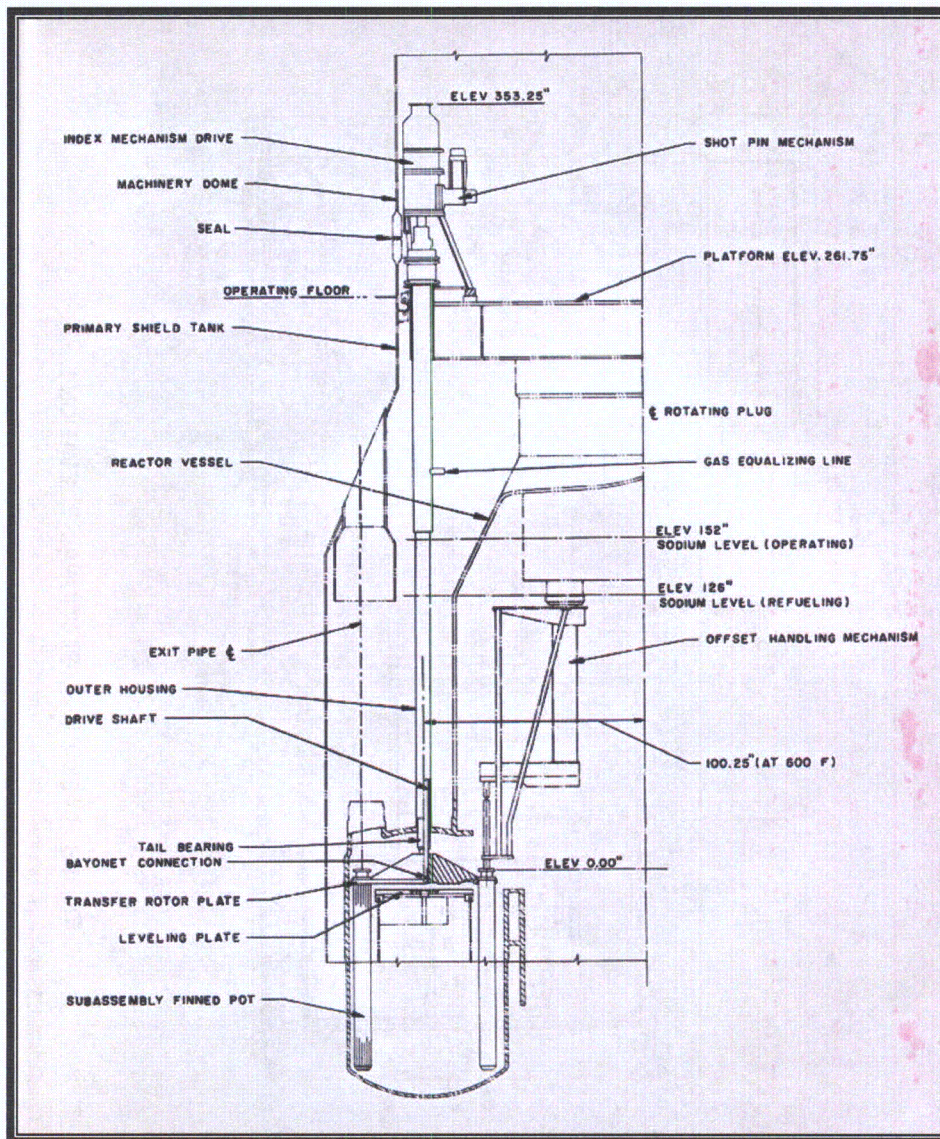


Plate 179 Section of subassembly rotor and exit pipe (Courtesy DECo)



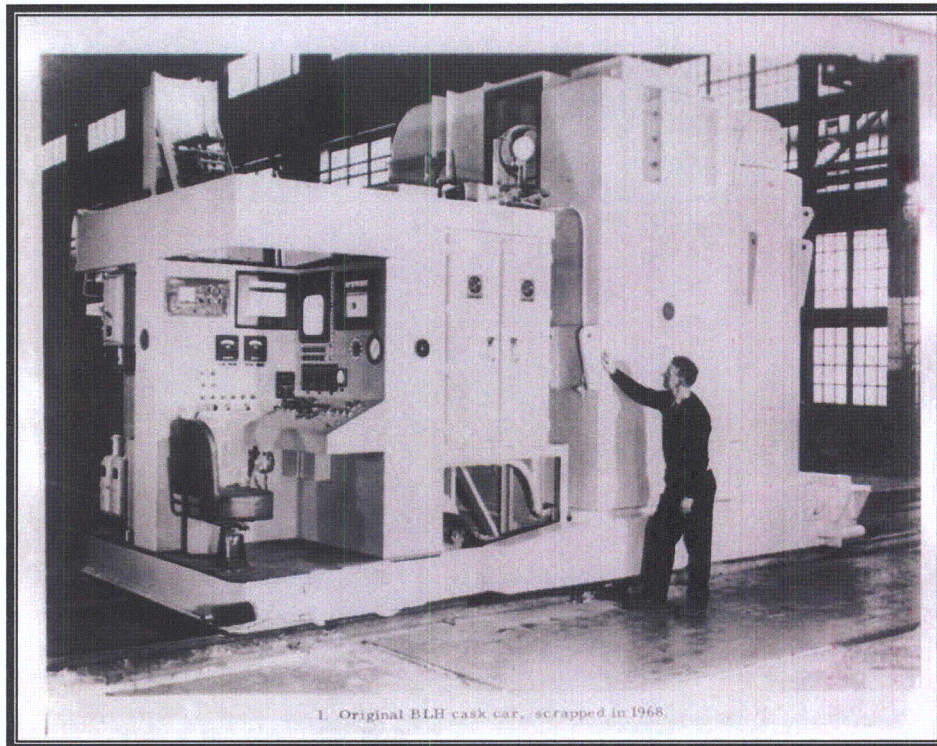


Plate 180 Original cask car (Courtesy DECo)

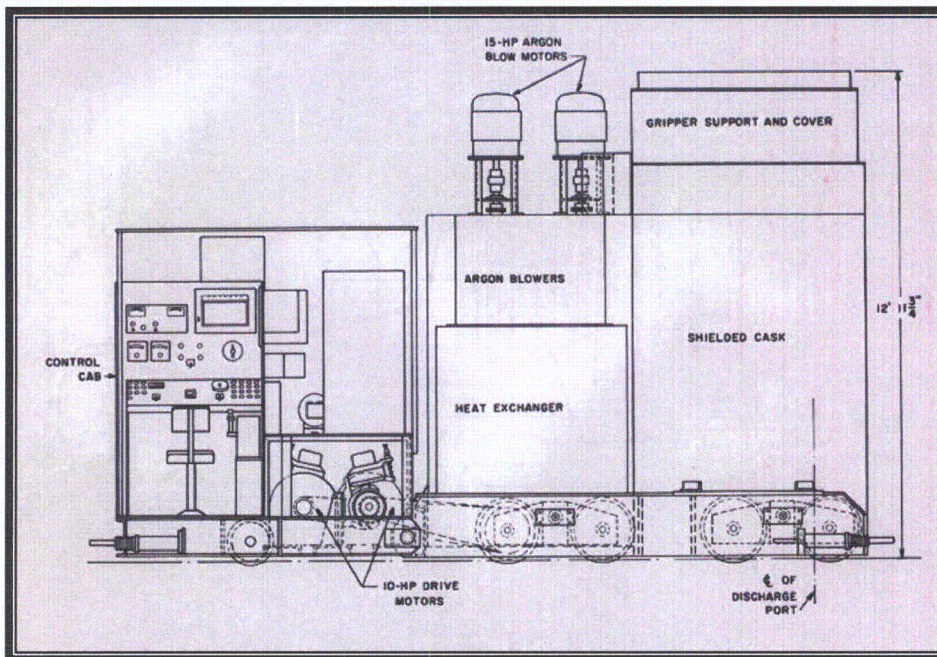


Plate 181 Elevation of cask car showing argon purge equipment (Courtesy DECo)

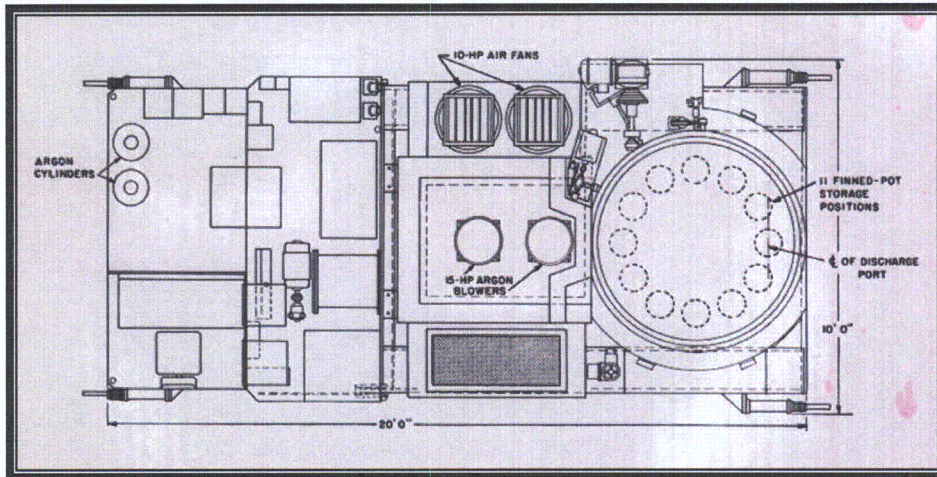


Plate 182 Plan of cask car showing storage cylinder (Courtesy DECo)

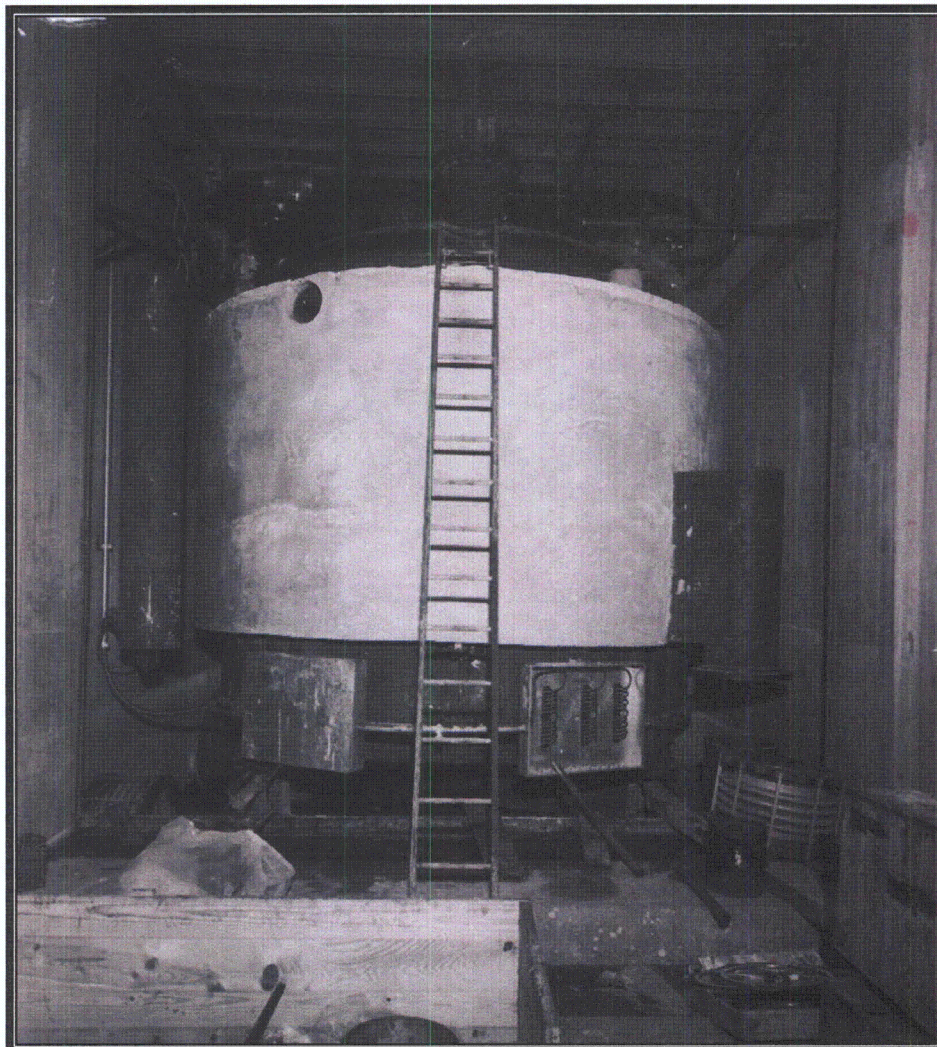


Plate 183 Transfer tank in lower level of FARB (Courtesy DECo)

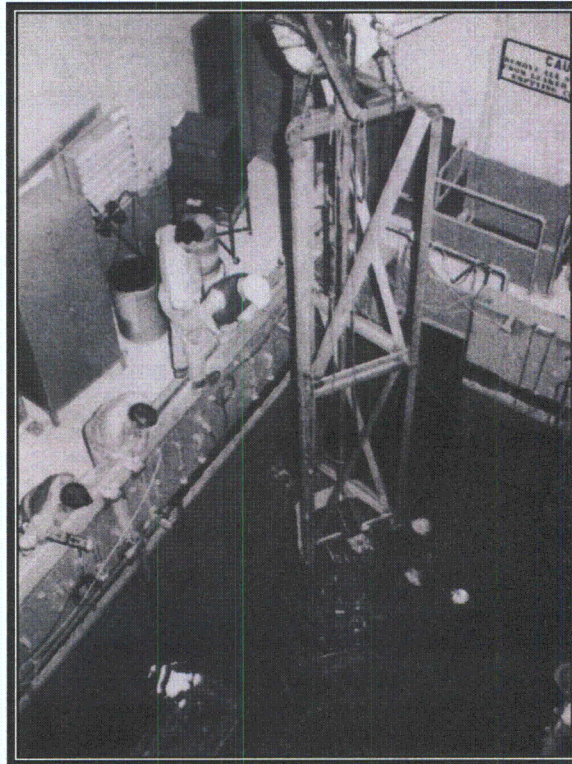


Plate 184 Lowering gage into cut-off pool (Courtesy DECo)

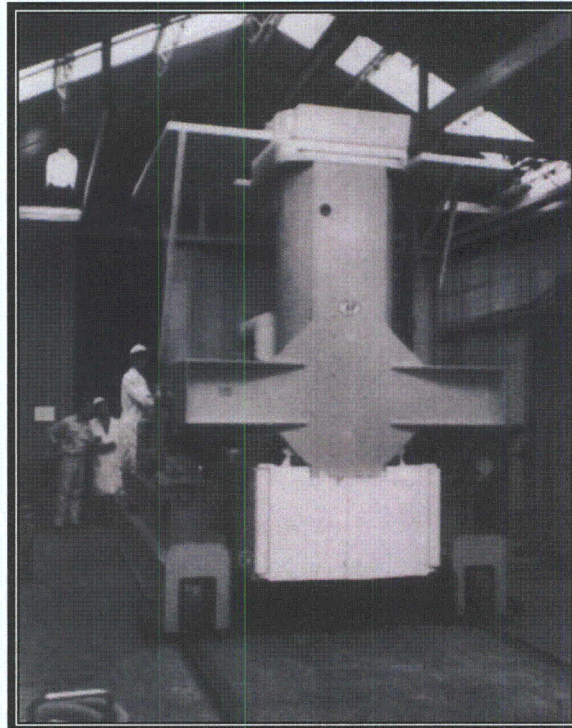


Plate 185 Replacement fuel transfer car (Courtesy DECo)

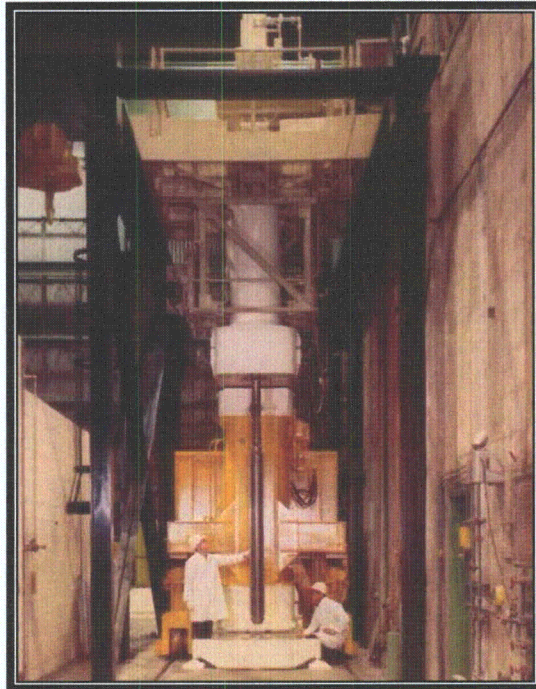


Plate 186 Transfer car, floor valve, transfer pot, and gripper in FARB (Courtesy DECo)

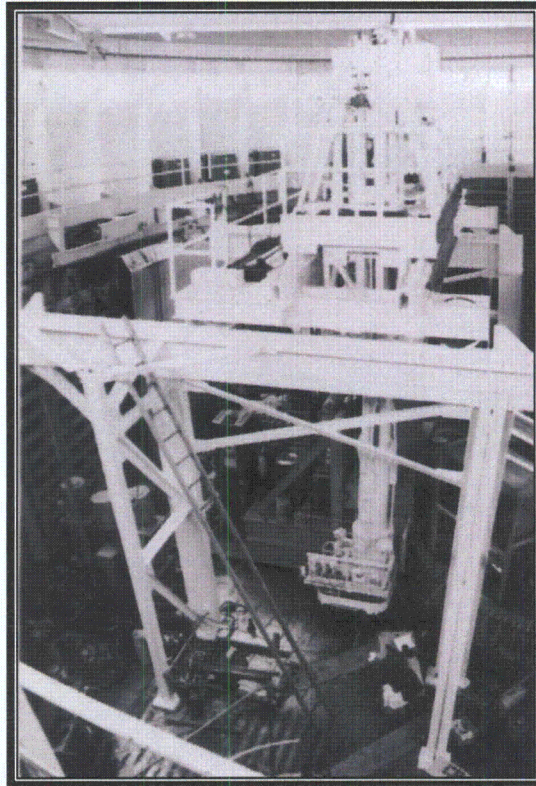


Plate 187 Second gripper mechanism erected in containment building (Courtesy DECo)

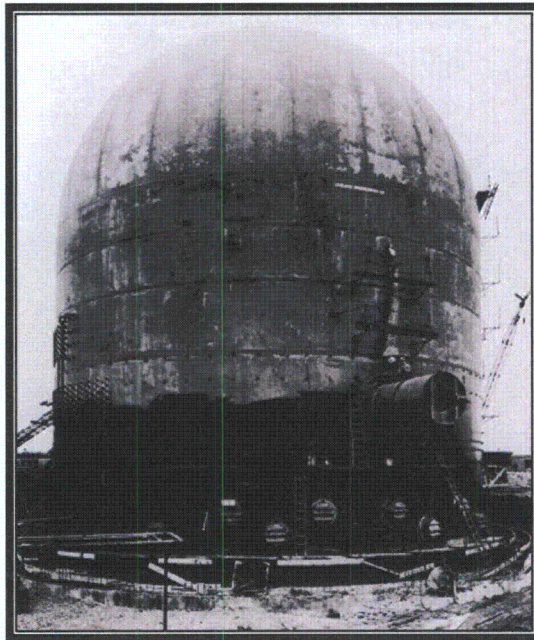


Plate 188 Reactor building nearing completion (Courtesy DECo)

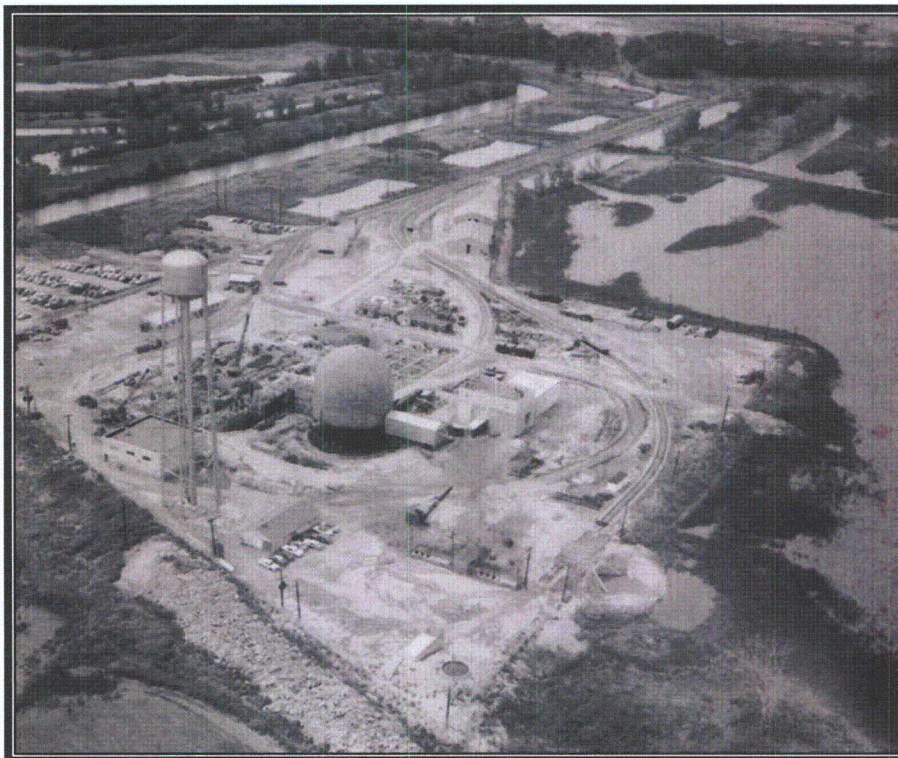


Plate 189 Early aerial view of Fermi 1 with reactor building, and partially completed sodium service building, ca. 1958. The gable roof section extending from the reactor building is not the trestleway, but was a clean room for personnel and equipment so that the highly-pure environment maintained in the reactor building during construction was not contaminated (Courtesy DECo)

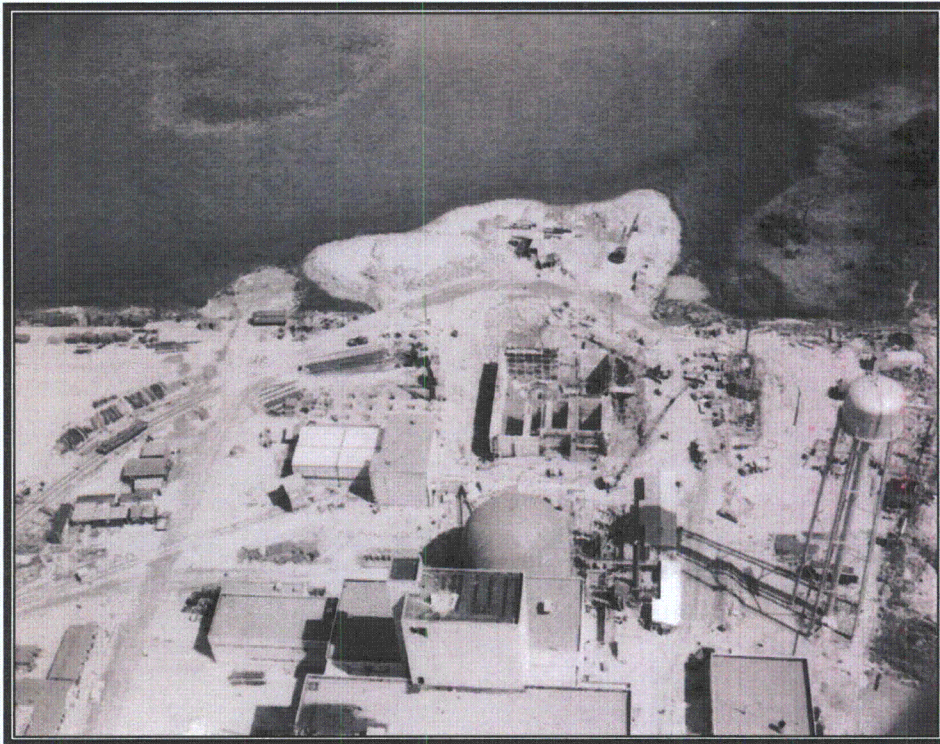


Plate 190 Later aerial view showing completion of the majority of the buildings and the FARB under construction, ca. 1960 (Courtesy DECo)