

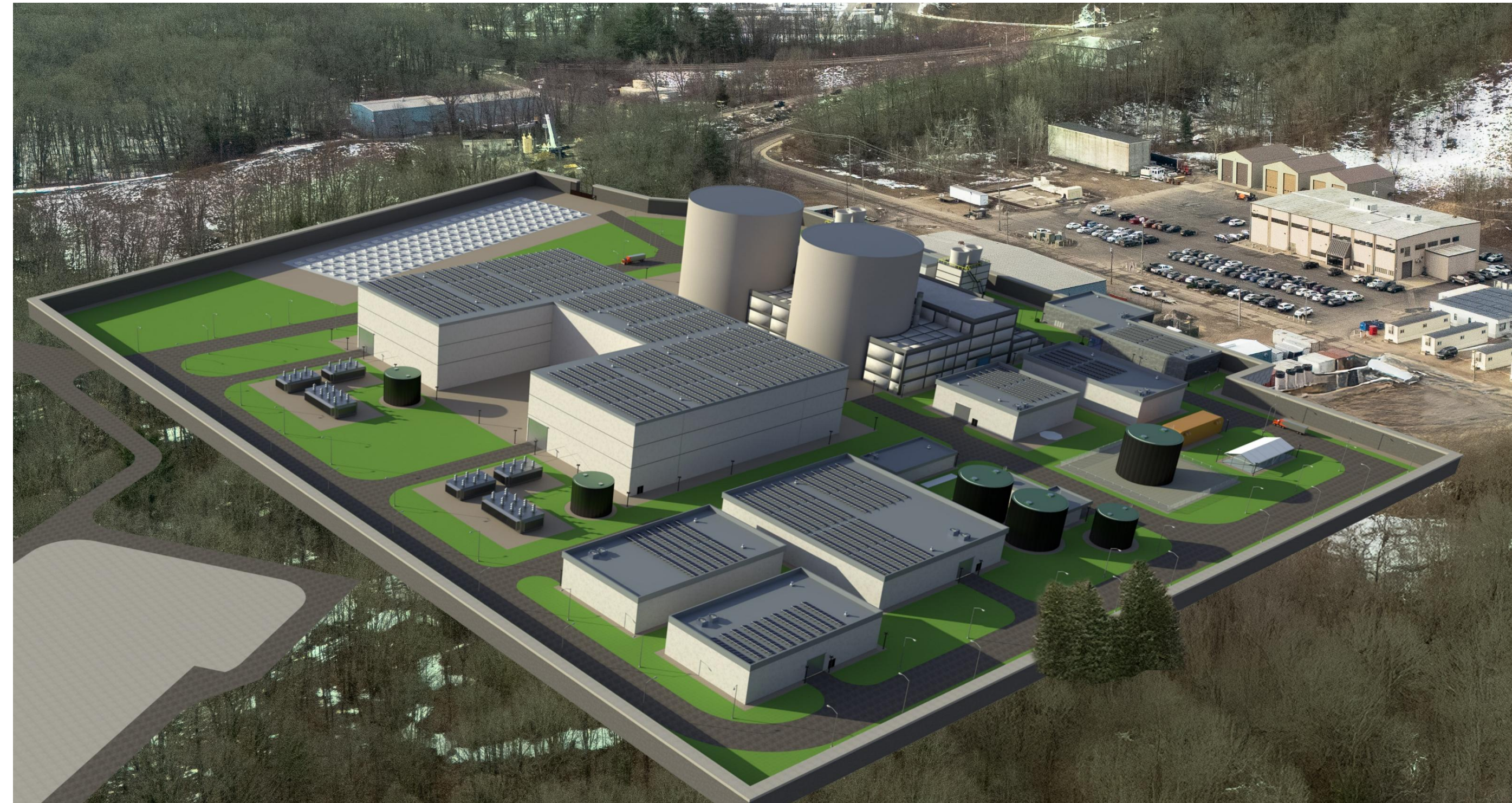


SMR-300 Structural Modularity (Open Session)

August 12, 2025

Holtec's SMR-300 Technology

Safe, Secure, Reliable, Flexible, Economical
Clean Energy to Support the World's Energy Needs



**Holtec International
Krishna P. Singh Technology Campus
One Holtec Boulevard
Camden, NJ 08104, USA**

[Not Export Controlled]

Agenda

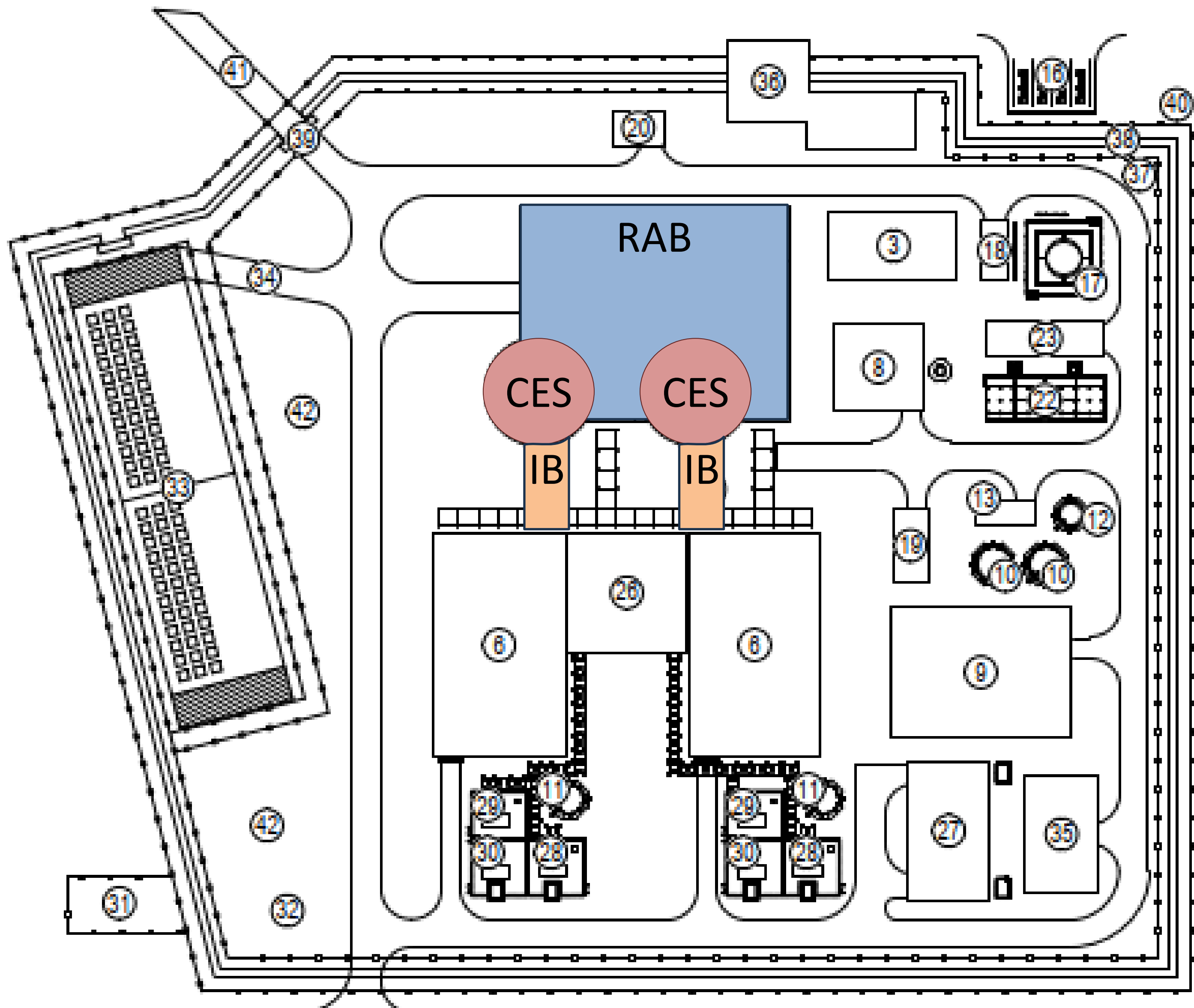
- Introduction
 - Design Philosophy
 - Methods of Analysis
 - Design Capacities
 - Application of Design Philosophy
 - Planned Testing
 - Modularity LTR
 - Q&A
- Closed Session
- 

Introduction

- SMR-300's Nuclear Island structures use steel-concrete modules
 - ✓ Containment Enclosure Structure
 - ✓ Containment Structure below grade
 - ✓ Reactor Auxiliary Building
 - ✓ Intermediate Building



General Layout – Use of Modular Construction



- Reactor Auxiliary Building
- Containment Enclosure Structure
- Intermediate Building

Technical Portion of Modularity Presentation

We will address:

- Design Philosophy
- Methods of Analysis
- Design Capacities
- Application of Design Philosophy
- Confirmatory Testing

Planned Modularity Topical Report

■ Plan to submit a Topical Report - **December 2025**

■ Will cover:

- ✓ Design Requirements
- ✓ Analysis Methods
- ✓ Connections
- ✓ Fire Performance
- ✓ Inspection and Corrosion Requirements
- ✓ Justification: Testing



Questions

