



Global Expertise • One Voice

PWROG – NRC Meeting

March 10th, 2025



Agenda

- **Introductions** *ALL*
- **Opening Remarks** *PWROG & NRC*
- **PWROG Structure & Overview, Topics for discussion** *Jim Lynde, PWROG Chairman*
- **NRC Topics** *Mike Franovich,
NRR Deputy Office Director for Engineering*
- **Open Discussion** *PWROG & NRC*
- **Closing Remarks** *PWROG & NRC*



Opening Remarks & Goals of the Meeting

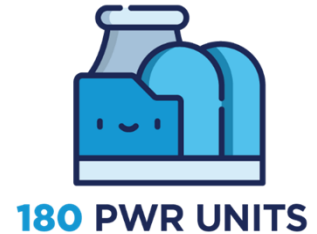
PRESSURIZED WATER REACTOR OWNERS GROUP



Structure & Organization

PRESSURIZED WATER REACTOR OWNERS GROUP

PWROG Membership Composition



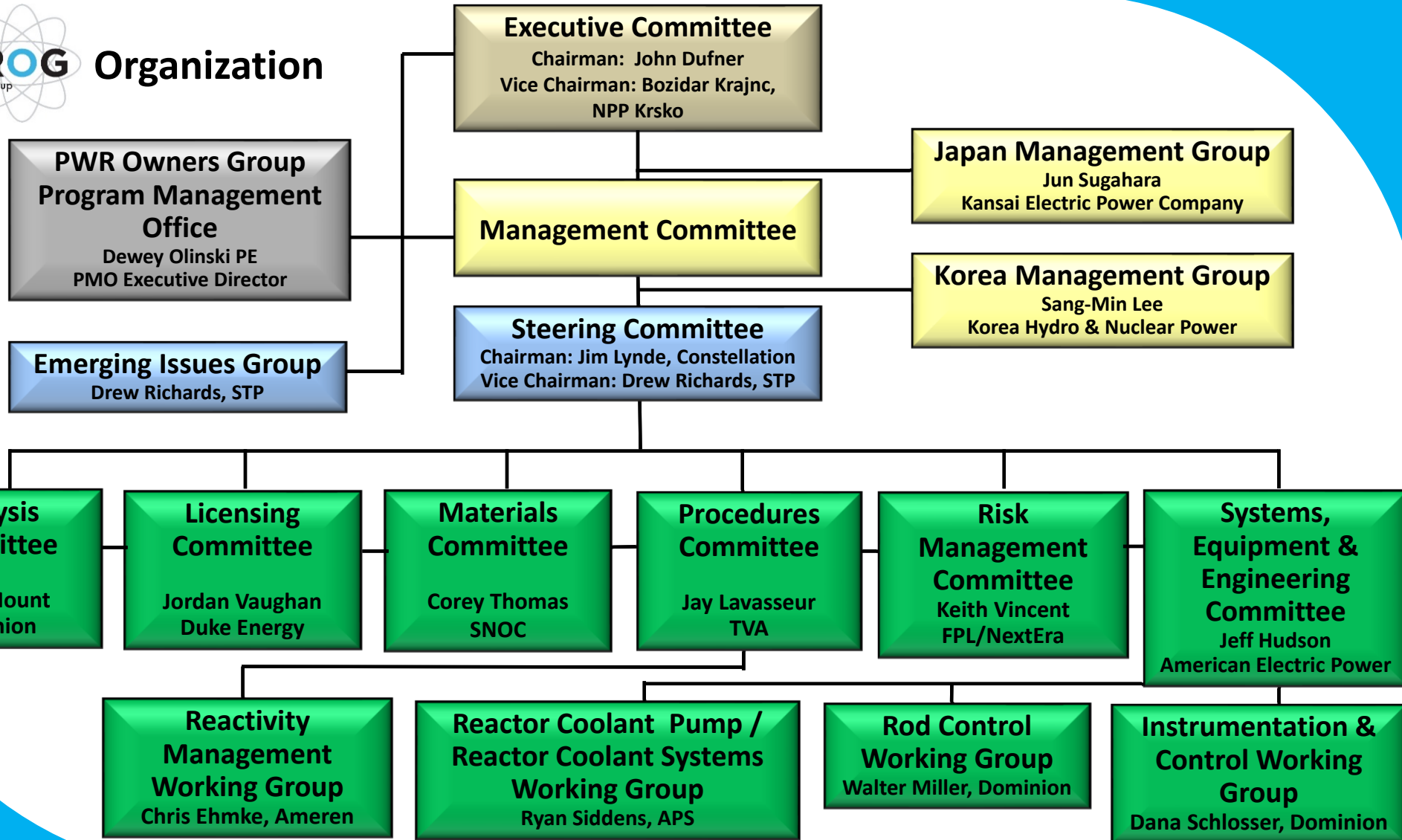
Ameren
American Electric Power
Angra I
Arizona Public Service
Barakah NPP
Beznau
Borssele
Bruce Power (PSC Only)
Constellation
Dominion Energy
Duke
EDF
EDF-Sizewell B

Electrabel
Entergy
Eskom
Eversource
Florida Power & Light (FPL) / NextEra
Hokkaido Electric Power Company
Japan Atomic Power Company
Kansai Electric Power Company
Korea Hydro & Nuclear Power
NPP Krško
Kyushu Electric Power Company
Pacific Gas & Electric
Palisades

PSEG
Ringhals 2,3,&4
Shikoku Electric Power Company
Southern Nuclear Operating Company
South Texas Project (STP) Nuclear
Operating Company
Spanish Utilities (ANAV & CNAT)
Taiwan Power Company
Temelin (I&CWG Only)
Tennessee Valley Authority
Vistra
Xcel Energy



Organization



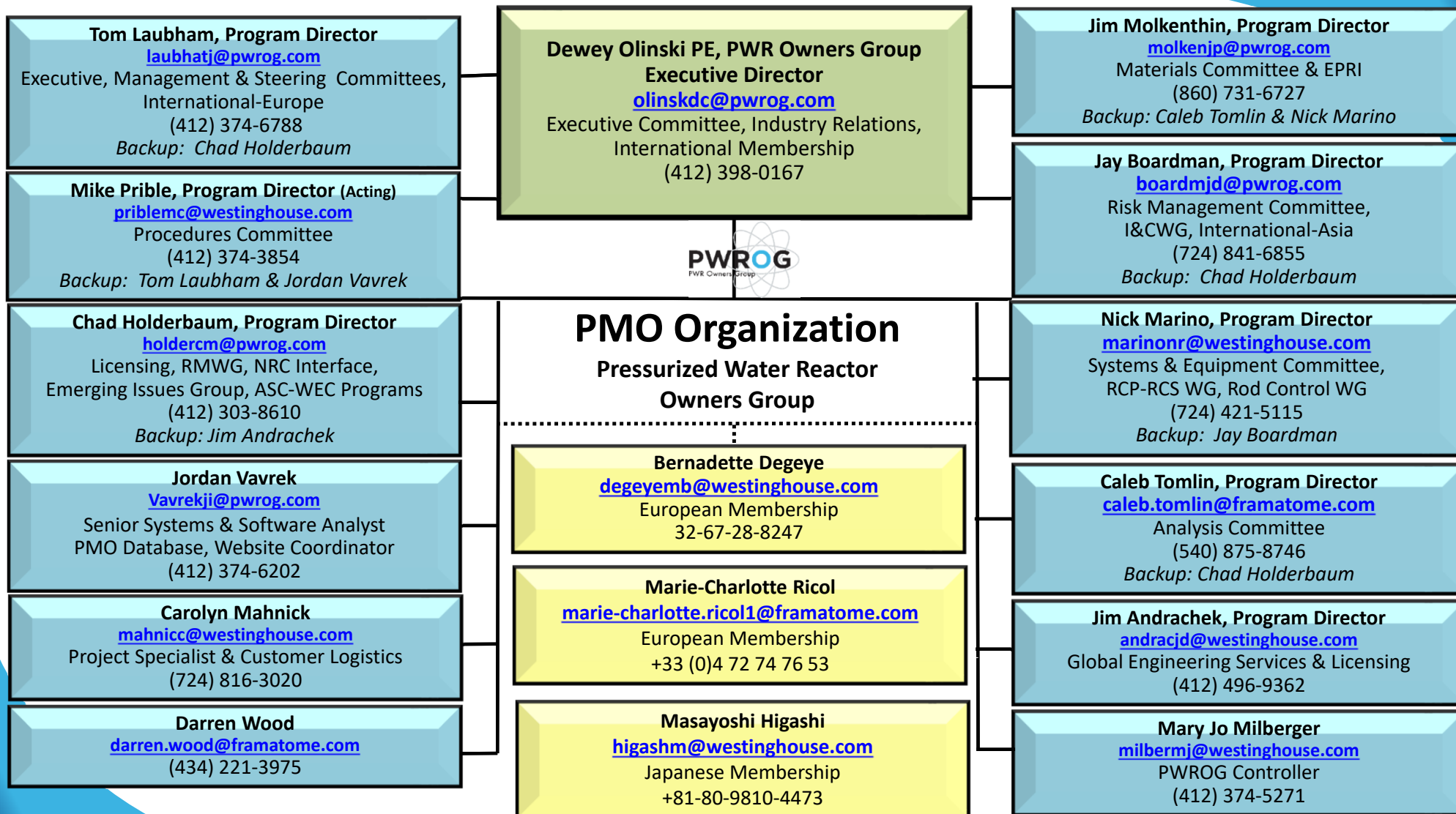


PWROG Executive Committee

John Dufner (TVA) – Executive Chairman
Bozidar Krajnc (Krsko) – Executive Vice Chair

Jim Lynde (Constellation) – PWROG Chairman
Drew Richards (STP) – PWROG Vice Chair

Domestic Executive Representatives		International Executive Representatives	
Brent Jungmann – Ameren	Joe Jerz - Holtec	Michael Meier - AXPO	Jose Augusto do Amaral - Electronuclear ETN
Jeff McClland – AEP	Allen Wilson – PG&E	Ferran Tarrasa – ANAV	Tariq Al Sarkal - Emirates Nuclear Energy Corporation
Adam Heflin – APS	Rob DeNight - PSEG	Jeroen van Gent - Borssele	Michael Meier - ESKOM
Mark Newcomer – Constellation	Earl Berry – SNC	James Ross – Bruce Power	Jun Sugahara - Japan Management Group (<i>Kansai, JAPC, Hokkaido, Kyushu, Shikoku</i>)
James Holloway – Dominion	Christopher Georgeson – STP	Martin Bica - CEZ	
Shawn Gibby – Duke	John Dufner – TVA	Borja Rosell Herrera - CNAT	Seung-Chul Lee - KHNP
Patrick Russell – Entergy	Jay Lloyd - Vistra	Patrice Gosset - EdF	Bozidar Krajnc – KRSKO
Jamie McCoy – Evergy	Thomas Conboy – Xcel Energy	Adrian Smith - EdF Energy	Magnus Holmgren – Ringhals
Chris Geiser – FPL/NextEra		Christiaan Debrouwere – Electrabel	Ding-Wen Chiou - Taiwan Power



February 2025



PWROG Topics for Discussion

9

- **RIPE Workshop – *Jim Lynde***
- **The ADVANCE Act of 2024 – *Jim Lynde (PWROG Chair)***
 - ❑ Use of Risk Informed Thinking for Ultimate Heat Sink (UHS)
 - ❑ Establishing techniques and guidance for evaluating applications for nuclear reactor licenses to support efficient, timely, and predictable reviews
- **Executive Orders: Declaring a National Energy Emergency & Unleashing American Energy**
 - ❑ TSTF-585 “Revise LCO 3.0.3 to Require Managing Risk” Review of TSTF-600, “Revise the RCS Pressure Isolation Valve Leakage Testing Frequency” – *Jordan Vaughan (LSC Chair)*
 - ❑ Increased Enrichment Rulemaking – *Brian Mount (ASC Chair)*
(see next slides)



PWROG Supporting IE Rulemaking

- Coordinating with NEI, BWROG, and EPRI.
- PWROG is aligned with NEI regarding aspects of the IE rulemaking.
- PWROG attention is focused on changes impacting radiological dose consequence analysis and Loss of Coolant Accident (LOCA) analysis changes.
- PWROG is supportive public workshops to enable an open and transparent dialogue on the industry's implementation efficiency, predictability, and durability concerns.



PWROG Supporting IE Rulemaking

Enhancements

- Relocation of certain LOCA requires from regulation to regulatory guides.
- Separation of the control room dose consequence design criterion from occupational dose limits of 10 CFR 20.

Challenges

- Voluntary 50.46a has a perceived large implementation burden, increases regulatory burden, and potentially limited benefit.
- Uncertainty associated with EQ dose impacts.
- Requirement for 50.46 LOCA Dose analyses with “well within” dose design criteria.