

Rio Algom Mining LLC

July 15, 2022

Mr. Thomas Lancaster
Nuclear Regulatory Commission
Mail Stop T-A10
Washington, DC 20555-0001

Re: **Ambrosia Lake Facility**
License SUA-1473, Docket No. 40-8905
License Condition #34
Groundwater Stability Monitoring Report, First Half of 2022

Dear Mr. Lancaster:

Pursuant to Condition 34 for License SUA-1473, attached is the *Rio Algom Mining LLC Ambrosia Lake West Facility Groundwater Stability Monitoring Report, First Half of 2022*. This report describes the results associated with the groundwater stability monitoring plan established by Amendment #56.

A digital copy of the report is also included in the package. One hardcopy of the report is being provided to you and one hardcopy is being provided to NRC Document Control. Electronic copies of the report will also be delivered by email attachment and/or file share to you, Anne Maurer and Amber Rheubottom (NMED), Bill Frazier (DOE), Dana Ravelojaona (DOE contractor), and Mike Schierman (H3 Environmental).

If you have any questions or need additional information, please call me at (916) 947-7637.

Sincerely,
Rio Algom Mining LLC



Sandra L. Ross, P.G.
Manager US Legacy Assets

Attachment: As stated

cc: NRC Document Control (MD) – License SUA-1473, Docket No. 40-8905
NMED – Anne Maurer (email), Amber Rheubottom (email)
DOE – Bill Frazier (email), Dana Ravelojaona (email)
H3 Environmental – Mike Schierman (email)

nm5501

RIO ALGOM MINING LLC

AMBROSIA LAKE WEST FACILITY

License SUA-1473 Docket 40-8905

Groundwater Stability Monitoring Report First Half of 2022

July 15, 2022

TABLE OF CONTENTS

LIST OF TABLES	ii
LIST OF FIGURES	ii
LIST OF APPENDICES	ii
ACRONYMS AND ABBREVIATIONS.....	iii
1.0 BACKGROUND	2
2.0 FIRST HALF OF 2022 ACTIVITIES.....	4
2.1 Improvements to the Monitoring Program	5
3.0 DATA EVALUATION	7
3.1 Dakota Sandstone.....	7
3.1.1 36-06 KD	7
3.1.2 32-45 KD-R.....	9
3.2 Tres Hermanos A	10
3.3 Tres Hermanos B	10
3.4 Alluvium	11
4.0 CONCLUSIONS	12
5.0 REFERENCES.....	13

LIST OF TABLES

Table 1a. Rio Algom Mining – Ambrosia Lake West Facility Alternate Concentration Limits....	4
Table 1b. Rio Algom Mining – Ambrosia Lake West Facility Groundwater Protection Standards	5
Table 2. First Half of 2022 Analytical Result Summary for Beryllium in Monitoring Well 36-06 KD.....	8
Table 3. First Half of 2022 Analytical Result Summary for Molybdenum in Monitoring Well 32-45 KD-R.....	9
Table 5. Rio Algom Mining – Ambrosia Lake West First Half of 2022 Summary and Path Forward.....	12

LIST OF FIGURES

Figure 1. Monitoring Well Network with Historical Site Features	2
Figure 2. Beryllium Concentrations in Dakota Sandstone Monitoring Well 36-06 KD	8
Figure 3. Molybdenum Concentration in Dakota Sandstone Monitoring Well 32-45 KD-R.....	10

LIST OF APPENDICES

Appendix 1	Stability Monitoring Plan Analytical Results
Appendix 2	Stability Monitoring Plan Time Versus Concentration Plots
Appendix 3	Stability Monitoring Plan Hydrographs
Appendix 4	Stability Monitoring Plan Potentiometric Surface Maps
Appendix 5	Analytical Lab Reports and EDDs For License Wells (Electronic Submittal Only)
Appendix 6	Tabulated Analytical Results for H1 2022 ACL Program Wells
Appendix 7	Analytical Lab Reports and EDDs For ACL Program Wells (Electronic Submittal Only)

ACRONYMS AND ABBREVIATIONS

ACL	alternate concentration limit
AOD	Assurance of Discontinuance
Be	beryllium
CAP	corrective action program
EDD	electronic data deliverable
EPA	Environmental Protection Agency, United States
ft	feet
ft/ft	feet per foot
GPS	groundwater protection standard
H1	first half
H2	second half
KD	Dakota Sandstone
License	source material license SUA-1473
mg/L	milligram per liter
Mo	molybdenum
NMED	New Mexico Environment Department
NRC	Nuclear Regulatory Commission
pCi/L	picocurie per liter
POE	point of exposure
Q1	first quarter
Q2	second quarter
Q3	third quarter
Q4	fourth quarter
RAML	Rio Algom Mining LLC
Site	Rio Algom Mining LLC – Ambrosia Lake West Facility
TRA	Tres Hermanos A
TRB	Tres Hermanos B

**RIO ALGOM MINING LLC
AMBROSIA LAKE WEST FACILITY
GROUNDWATER STABILITY MONITORING REPORT –
FIRST HALF OF 2022**

The United States Nuclear Regulatory Commission (NRC) source material license SUA-1473 (the License), Condition 34.D, requires Rio Algom Mining LLC (RAML) to submit semiannual groundwater monitoring reports associated with the facility's groundwater stability monitoring plan established by Amendment 56. Condition 34.D states (bracketed definitions added):

Submit, by February 1 and August 1 of each year groundwater monitoring reports to include a minimum of the following: potentiometric surface maps for each aquifer; time vs. concentration plots for all parameters for which ACLs [alternate concentration limits] have been issued, hydrographs for the downgradient most trend well or POE [point of exposure] well in each aquifer, hydraulic gradient calculations, and tabulated analytical data for each ACL parameter for each well.

1.0 BACKGROUND

RAML's Ambrosia Lake West facility (Site) is located in McKinley County, approximately 24 miles due north of Grants, New Mexico, in the Ambrosia Lake Valley. Uranium milling activities started at the Site in 1957. The waste management structures were Cells 1 and 2, Decantation Pond 3, Evaporation Ponds 4 through 10, and the Section 4 Evaporation Ponds, as shown in **Figure 1**.

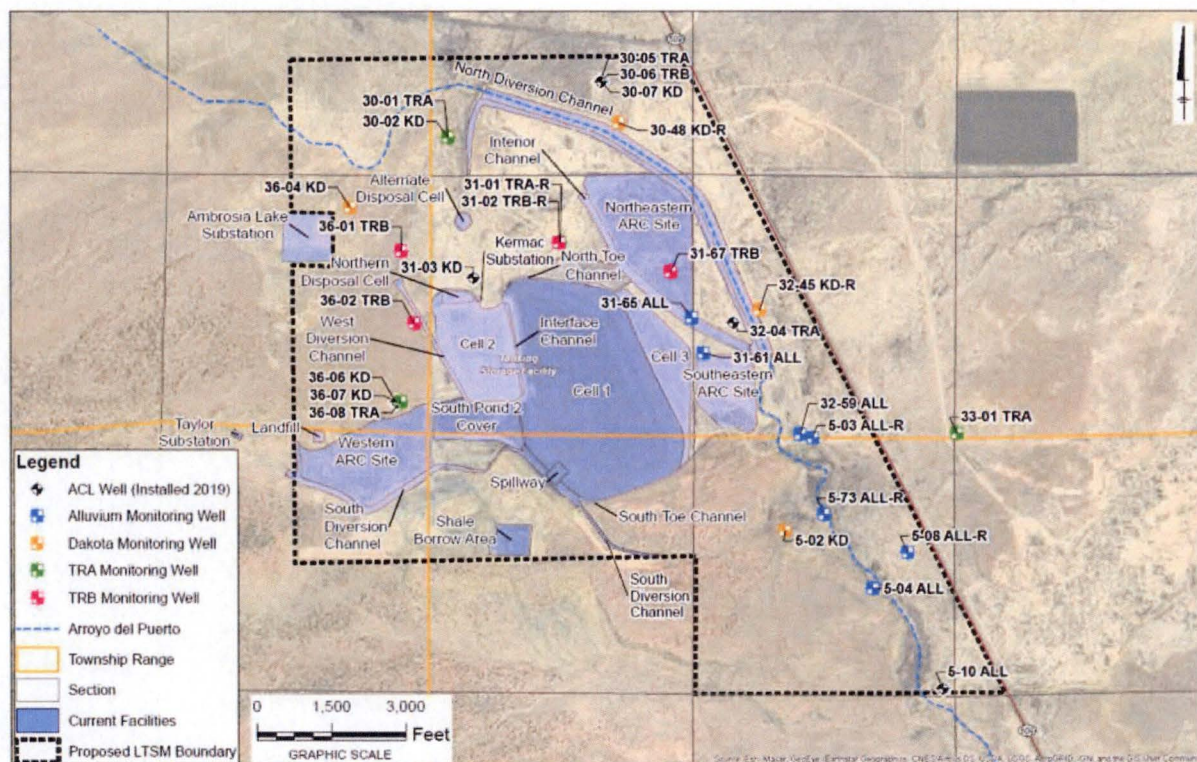


Figure 1. Monitoring Well Network with Historical Site Features

Cells 1 and 2 were built in 1958 and were constructed to accept tailings material. Cell 3 (formerly Pond 3) was also constructed in 1958 but was originally designed to accept decanted tailings liquids. Tailings were first produced at the Site in November 1958. In 1976, the natural course of the Arroyo del Puerto was diverted east of the Northeastern and Southeastern ARC sites (formerly Ponds 4, 5, 6, 9, and 10) and construction of the Section 4 Evaporation Ponds began. The solids fraction of the tailings were disposed through a slurry transfer system to Cells 1 and 2, while the liquids fraction was transferred to the Section 4 Evaporation Ponds. Evaporation pond residues were placed in Cells 1 and 2 prior to final reclamation. The aforementioned cells and ponds were unlined, except Pond 9, Pond 10, and the Section 4 Evaporation Ponds. Seepage from Cells 1 and

2 and Evaporation Ponds 3 through 6, along with seepage from unrelated mining and milling operations, saturated and impacted the alluvium of the Arroyo del Puerto and the Tres Hermanos B (TRB) sandstone. Seepage from Cells 1 and 2 and the Western ARC Site (formerly Evaporation Ponds 7 and 8) recharged and impacted the Tres Hermanos A (TRA) sandstone within the Mancos Formation shale, and the Dakota Sandstone (KD), which underlies the Mancos Formation.

In 1983, RAML's predecessor entered into an Assurance of Discontinuance (AOD) with the State of New Mexico Environmental Improvement Division (NMEID, currently the New Mexico Environment Department [NMED]) to minimize the future impact of mill tailings solutions seepage on groundwater. The approved AOD remedial action required the construction and maintenance of interceptor trench IT-1 and the cessation of discharges to unlined Ponds 4 through 8. These ponds were taken out of service in 1983. In the late 1990s, interceptor trenches IT-2, IT-3, and IT-4 south of Pond 10 were added to collect seepage potentially missed by IT-1 (Figure 1).

In 1986, after the State of New Mexico relinquished its licensing authority over uranium mill activities, the NRC reasserted its jurisdiction at the Site and required that the Site begin a groundwater detection monitoring program. Data from this program were the basis for the groundwater protection standards (GPSs) established for the Site by NRC, and a corrective action program (CAP) for the groundwater was developed based on this information.

The CAP required pumping, treating, and discharging treated groundwater into the Arroyo del Puerto. The treated groundwater management was implemented so that this water would sweep through the alluvium, creating a hydraulic barrier between Cells 1 and 2 and the Arroyo del Puerto while flushing existing impacted groundwater toward the interceptor trench, where it was then captured and disposed into Cell 1. The CAP was implemented beginning in the mid-1980s. The CAP and its requirements to pump and treat were discontinued when the alternate concentration limit (ACL) petition was granted through License Amendment 56 by the NRC in 2006.

Mining and milling operations in the area have had two notable hydrologic effects: (1) creation of a saturated zone in the alluvium and (2) creation of a cone of depression in bedrock aquifers, due to dewatering of underground mines. The saturated zone in the alluvium has continued to decrease since mine dewatering, milling processes, and the CAP were terminated. The cone of depression in bedrock aquifers which contains groundwater within these units is expected to remain for hundreds of years (INTERA 2018).

2.0 FIRST HALF OF 2022 ACTIVITIES

Groundwater monitoring and associated activities at the Site during the first half (H1) of 2022 were completed in accordance with the requirements of Condition 34 of the License. The monitoring well network was designed to track and assess groundwater impacts between Cells 1 and 2 and the proposed point of exposure (POE), which is currently the proposed long-term surveillance and maintenance boundary for the alluvium, TRA, TRB, and KD. The ACLs and GPSs for the Site are presented in Table 1a and Table 1b.

Table 1a. Rio Algom Mining – Ambrosia Lake West Facility Alternate Concentration Limits

Parameter	Dakota Sandstone	Tres Hermanos A Sandstone	Tres Hermanos B Sandstone	Alluvium
Chloride (mg/L)	3,200	1,070	2,810	7,110
Nitrate (mg/L)	22.8	9.2	7.7	351
Sulfate (mg/L)	6,480	2,584	4,760	12,000
Total Dissolved Solids (mg/L)	14,100	6,400	11,700	26,100
Molybdenum (mg/L)	-	-	-	176
Nickel (mg/L)	6.8	-	6.8	98
Selenium (mg/L)	-	-	-	49
Uranium (mg/L)	1.6	-	1.6	23
Thorium-230 (pCi/L)	945	945	945	13,627
Radium-226 and Radium-228 (pCi/L)	218	218	218	3,167
Lead-210 (pCi/L)	62	62	62	891

Notes:

- = No ACL is defined by the License

mg/L = milligram per liter

pCi/L = picocurie per liter

**Table 1b. Rio Algom Mining – Ambrosia Lake West Facility
Groundwater Protection Standards**

Parameter	Dakota Sandstone	Tres Hermanos A Sandstone	Tres Hermanos B Sandstone	Alluvium
Cyanide (mg/L)	0.04	0.01	0.01	-
Antimony (mg/L)	0.05	-	-	-
Arsenic (mg/L)	0.1	-	-	-
Beryllium (mg/L)	0.01	-	-	-
Cadmium (mg/L)	0.01	-	-	-
Lead (mg/L)	0.14	-	-	-
Molybdenum (mg/L)	0.06	0.03	0.08	-
Nickel (mg/L)	-	0.05	-	-
Selenium (mg/L)	0.04	0.03	0.04	-
Uranium (mg/L)	-	0.01	-	-

Notes:

- = No GPS is defined in the License

Attachments to this report present the following information as outlined in Conditions 19 and 34.D of the License: **Appendix 1** contains analytical data for ACL and GPS parameters for the KD, TRA, TRB, and alluvium units for H1 2022. **Appendix 2** contains time versus concentration plots for ACL parameters for the KD, TRA, TRB, and alluvium. **Appendix 3** contains hydrographs for the most downgradient monitoring well for the KD, TRA, TRB, and alluvium. **Appendix 4** contains monitoring well network and potentiometric surface maps for the KD, TRA, TRB, and alluvium during H1 2022. The monitoring well network is also illustrated on **Figure 1**. **Appendix 5** contains analytical laboratory reports and electronic data deliverables (EDDs) of groundwater monitoring data required by the License. As a courtesy to NRC, **Appendix 6** contains tabulated analytical data collected during H1 2022 from additional monitoring wells that have been installed to evaluate potential additional ACL requirements for the ACL program. **Appendix 7** is an electronic-only appendix containing analytical laboratory reports and EDDs of groundwater monitoring data for the ACL program.

2.1 Improvements to the Monitoring Program

Eight monitoring wells (**Figure 1**) were installed between July and November 2019, in accordance with the *Data Collection Work Plan in Support of Additional ACLs* (INTERA 2017). Alluvial well 5-10 ALL has been dry since installation. Groundwater monitoring of the new wells began in December 2019. Water quality data collected from these wells during H1 2022 are included in **Appendix 6**. RAML completed 8 quarters of monitoring of these wells, which started in the first

quarter (Q1) of 2020, to track the stabilization of the wells and obtain representative groundwater quality data to aid in the evaluation of the ACL program. The quarterly water quality data was reported in the *Groundwater Stability Monitoring Report - Second Half (H2) of 2021* (RAML 2022a). Groundwater monitoring of these wells continues on a semi-annual basis. Groundwater elevations from these wells have been incorporated into the potentiometric surface contours presented in **Appendix 4** and the hydraulic gradient calculations, where appropriate.

RAML evaluated the condition of Dakota monitoring well 36-06 KD, where anomalous water elevation and chemistry conditions have been observed since the well was redeveloped in the third quarter (Q3) of 2020. RAML submitted the *Summary of Investigation of Groundwater Conditions at 36-06 KD and 36-07 KD* (Intera 2022) to NRC on June 6, 2022, along with a request to amend the License to replace well 36-06 KD with well 36-07 KD on the basis that well 36-06 KD is disconnected from, and not representative of, the Dakota aquifer that it is Licensed to monitor. RAML will continue to sample well 36-06 KD as required by the License until a change is formally approved by NRC.

A flash flood occurred in and around Ambrosia Lake in August 2021 and one well, 5-04 ALL, was affected, resulting in approximately 30 feet of mud in the well casing. RAML attempted to redevelop this well in December 2021; however, it was found that the well casing had collapsed approximately 5 feet below the top of the well housing. RAML has been unable to sample well 5-04 ALL since the first semi-annual monitoring event in 2021. On May 27, 2022, RAML submitted a request to amend the License by abandoning damaged well 5-04 ALL and installing and sampling a nearby replacement well, which will be called 5-04 ALL-R (RAML 2022b).

3.0 DATA EVALUATION

As a component of the ACL approval process, NRC established ACLs for specific parameters and retained the GPSs for those constituents for which ACLs were not proposed (**Tables 1a and 1b**) (NRC 2022). Data collected during H1 2022 were compared to ACLs and GPSs (**Appendix 1**). Notable results are described in the following sections.

3.1 Dakota Sandstone

Analytical results from the KD groundwater monitoring well network specified in SUA-1473 are tabulated in **Appendix 1**, and ACL parameters are presented in time series plots in **Appendix 2**. A hydrograph for the most downgradient KD well, 30-02 KD, is included in **Appendix 3**. The KD potentiometric surface elevation is displayed in **Appendix 4**, page 4-1 and was used to calculate a hydraulic gradient of 0.029 feet per foot (ft/ft) during H1 2022.

KD monitoring wells 36-06 KD and 32-45 KD-R have been sampled monthly during H1 2022 due to exceedances of GPSs for beryllium in 36-06 KD and molybdenum in 32-45 KD-R. No other constituents were detected above applicable ACLs in KD monitoring wells during H1 2022. Monitoring well 30-02 KD was constructed with an 18-foot sump (**Appendix 3**) and contains up to 5 feet of water, therefore monitoring of 30-02 KD is limited to water level and total depth measurements. The results of monthly sampling are discussed below.

3.1.1 36-06 KD

Monitoring well 36-06 KD was sampled monthly for beryllium in H1 2022 (**Table 2**). Beryllium concentrations are presented in **Figure 2**.

The *Quarterly Groundwater Monitoring Report, Third Quarter of 2020* (RAML 2020) describes recent beryllium exceedances and proposed a corrective action of the ongoing ACL program (INTERA 2017), and six months of monthly monitoring followed by a data evaluation that also considers nearby well 36-07 KD. The six-month period was completed in March 2021. As noted in Section 2.1, RAML submitted an evaluation of the condition of well 36-06 KD on June 6, 2022, which concluded that samples from this well are not representative of groundwater in the Dakota aquifer.

Elevated beryllium concentrations have been observed in 36-06 KD since 2006 and have gradually trended downward. Beryllium remained at or below the GPS in 2018 and 2019 until the well was redeveloped in Q3 2020. After redevelopment, beryllium concentrations increased above the GPS in fourth quarter (Q4) 2020 and Q1 2021 and then declined to below the GPS in second quarter (Q2) 2021. Beryllium concentrations have fluctuated in H1 2022 and are currently above the GPS. The water level in well 36-06 KD also increased after redevelopment and has since declined to approximately the same elevation as before redevelopment. Beryllium in 36-06 KD will continue

to be monitored monthly. The results of the monthly monitoring will be presented in future quarterly and semiannual groundwater monitoring reports.

Beryllium concentrations were above the GPS in January, February, March, May and June 2022 samples.

Table 2. First Half of 2022 Analytical Result Summary for Beryllium in Monitoring Well 36-06 KD

Date	Beryllium (mg/L)
GPS	0.01
1/13/22	0.013
2/10/22	0.017
3/19/22	0.0143
4/26/22	<0.00008
5/3/22	0.0137
6/15/22	0.0128

Note: exceedances are bolded

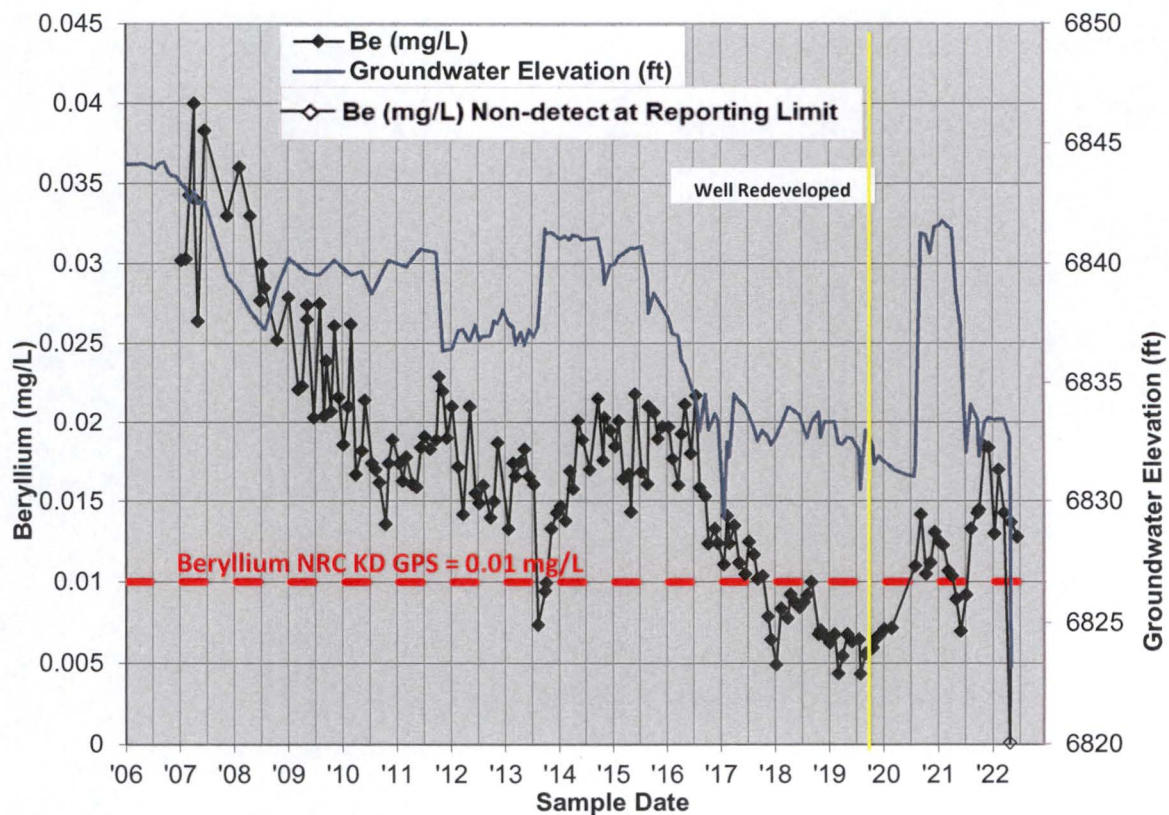


Figure 2. Beryllium Concentrations in Dakota Sandstone Monitoring Well 36-06 KD

Note: April 2022 data presented in the graph was not detected above the reported limit.

3.1.2 32-45 KD-R

RAML performs monthly sampling for molybdenum at monitoring well 32-45 KD-R in response to historical exceedances of the molybdenum GPS.

Molybdenum in monitoring well 32-45 KD-R reached a maximum concentration of 0.505 mg/L in March of 2015 (**Figure 3**). Although molybdenum concentrations have generally decreased since then, they continue to exceed the GPS of 0.06 mg/L (**Table 3** and **Figure 3**). **Table 3** presents molybdenum concentrations in monitoring well 32-45 KD-R during H1 2022.

Molybdenum is not included in primary or secondary United States Environmental Protection Agency (EPA) Maximum Contaminant Levels for drinking water; however, NMED has a molybdenum standard for irrigation, which is 1.0 mg/L. Concentrations of molybdenum in groundwater samples from 32-45 KD-R do not exceed that standard.

Monthly sampling and analysis for molybdenum will continue, pending preparation of a License amendment, which may include a proposed GPS modification or an ACL for molybdenum in the KD.

Molybdenum concentrations were above the GPS in January, February, March, May and June 2022 samples.

Table 3. First Half of 2022 Analytical Result Summary for Molybdenum in Monitoring Well 32-45 KD-R

Date	Molybdenum (mg/L)
GPS	0.06
1/13/22	0.124
2/3/22	0.0924
3/19/22	0.0695
4/25/22	0.00042
5/3/22	0.0954
6/15/22	0.101

Note: exceedances are bolded

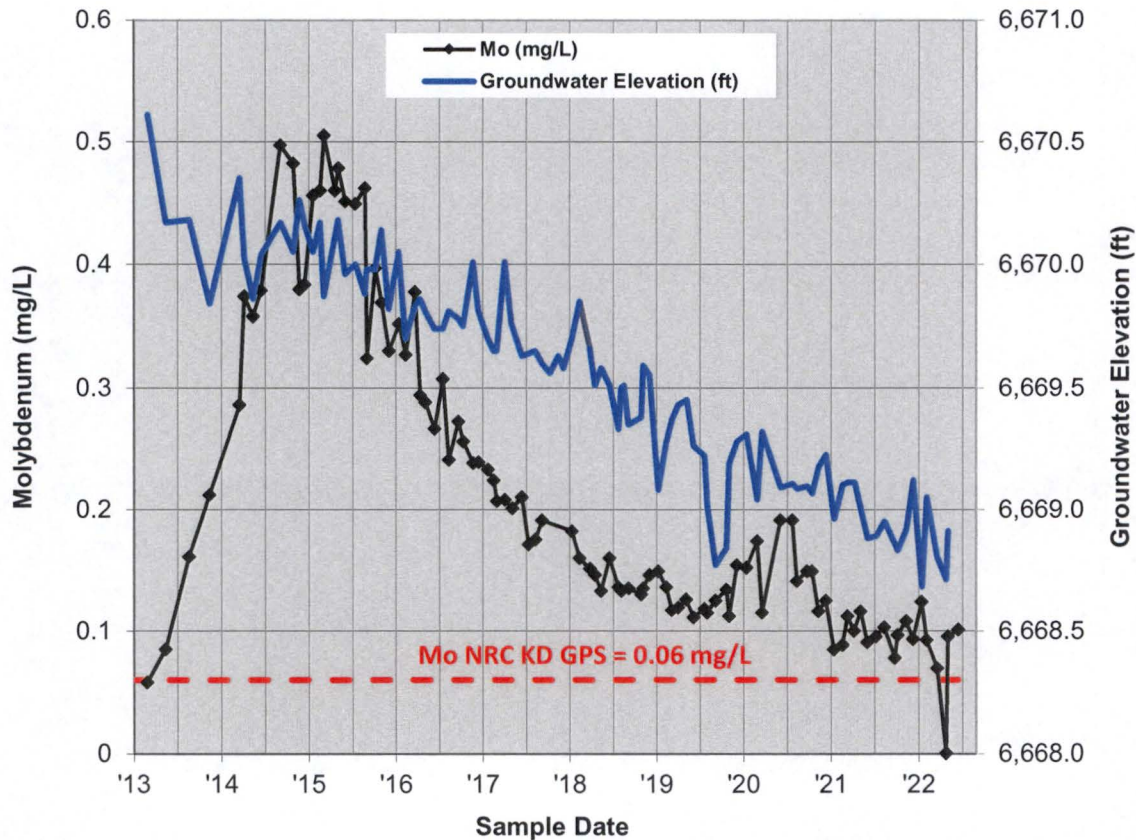


Figure 3. Molybdenum Concentration in Dakota Sandstone Monitoring Well 32-45 KD-R

3.2 Tres Hermanos A

Analytical results from TRA wells are tabulated in **Appendix 1** and presented graphically as time series plots in **Appendix 2**. A hydrograph for the most downgradient TRA well, 30-01 TRA, is included in **Appendix 3**. The TRA potentiometric surface elevation is displayed in **Appendix 4**, page 4-2 and was used to calculate a hydraulic gradient of 0.030 ft/ft for H1 2022.

As illustrated in **Appendix 3**, monitoring well 30-01 TRA was constructed with a 20-foot sump and generally contains less than 5 feet of water; therefore, monitoring of 30-01 TRA is limited to water level and total depth measurements. It was dry in during H1 2022. Groundwater samples from background well 33-01 TRA and monitoring well 31-01 TRA-R did not exceed License groundwater standards during H1 2022. No constituents were detected above applicable ACLs or GPSs in samples collected from TRA monitoring wells in H1 2022.

3.3 Tres Hermanos B

Analytical results from TRB monitoring wells are tabulated in **Appendix 1** and are presented graphically as time series plots in **Appendix 2**. A hydrograph for the most downgradient TRB

monitoring well, 31-67 TRB, is included in **Appendix 3**. TRB potentiometric surface elevation is displayed in **Appendix 4**, page 4-3, and was used to calculate a hydraulic gradient of 0.015 ft/ft for H1 2022.

Monitoring well 36-01 TRB was last sampled in 2009 and has not contained enough water for a sample since then. No new exceedances of ACLs or GPSs were observed in groundwater collected from TRB License monitoring wells in H1 2022.

3.4 Alluvium

Analytical results from the alluvial well network are tabulated in **Appendix 1** and are presented graphically as time series plots in **Appendix 2**. A hydrograph for the most downgradient alluvial well, MW-24 ALL, is included in **Appendix 3**. MW-24 ALL was dry in H1 2022. The Alluvial potentiometric surface elevation is displayed in **Appendix 4**, page 4-4, and was used to calculate a hydraulic gradient of 0.008 ft/ft for H1 2022.

Well 5-04 ALL has not been sampled since Q1 of 2021 because of damage from an August 2021 flash flood and subsequent casing collapse. RAML recently submitted a request to amend the License by abandoning damaged well 5-04 ALL and installing and sampling a replacement alluvial well nearby (to be called 5-04 ALL-R) (RAML, 2022). Monitoring well 32-59 ALL previously had not been sampled due to insufficient water, however after redevelopment in Q3 of 2020, water levels increased sufficiently to collect a sample in Q1 and Q3 of 2021 and Q1 of 2022.

Groundwater samples collected from License alluvial wells did not exceed ACLs during H1 2022.

4.0 CONCLUSIONS

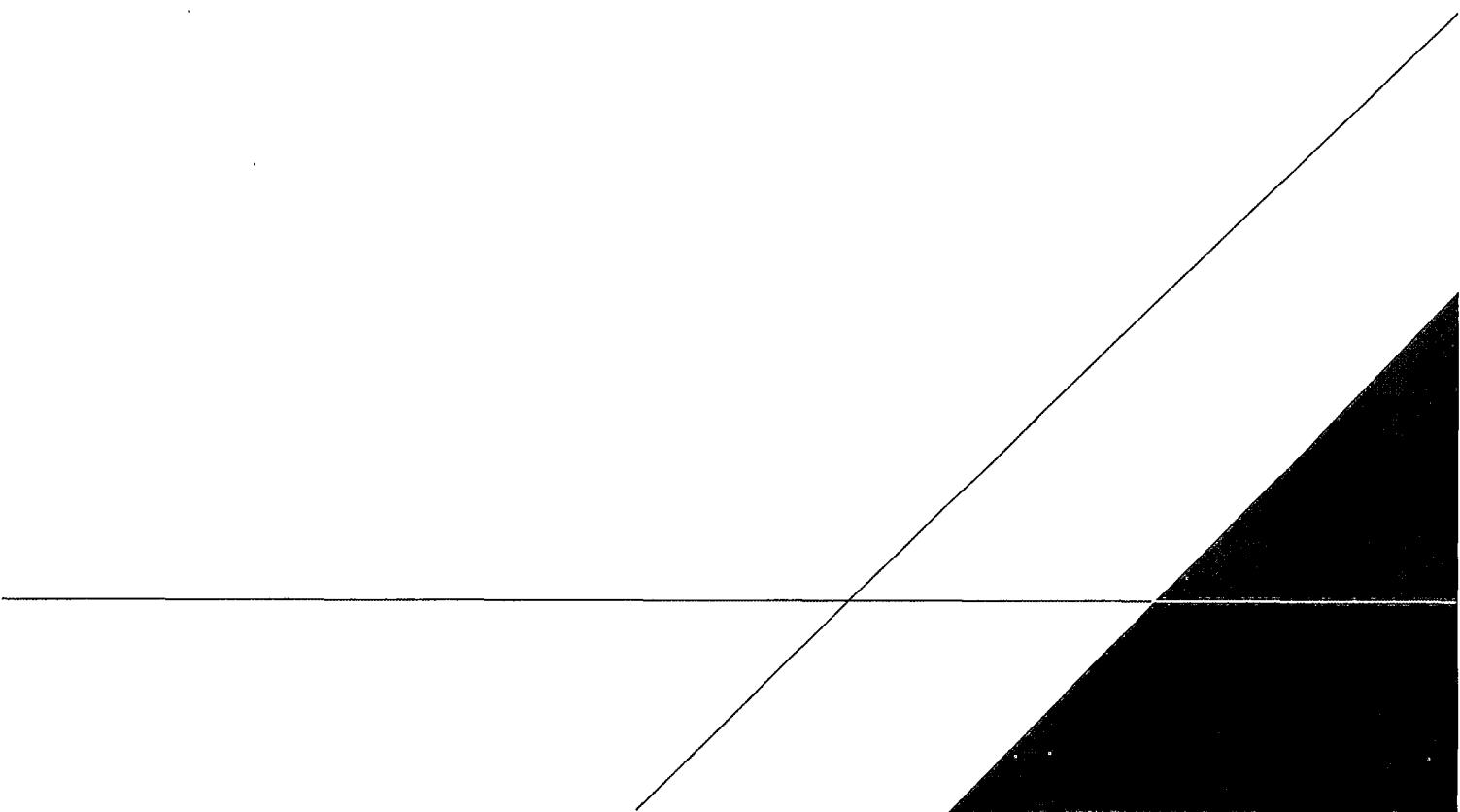
Constituent concentrations in groundwater samples collected from License wells were below applicable ACLs and GPSs except for beryllium in well 36-06 KD and molybdenum in well 32-45 KD-R. **Table 5** summarizes the notable results from H1 2022 groundwater monitoring and provides path forward recommendations.

**Table 5. Rio Algom Mining – Ambrosia Lake West
First Half of 2022 Summary and Path Forward**

Well(s)	Summary	Status	Path Forward
36-06 KD	Beryllium above GPS	Monthly sampling	RAML submitted a technical evaluation of well 36-06 KD along with a request to remove the well from the License. RAML will continue monthly sampling and quarterly reporting for beryllium until a change is formally approved by NRC.
32-45 KD-R	Molybdenum above GPS	Replacement well stabilizing, monthly sampling	Continue monthly sampling and quarterly reporting for molybdenum until an alternative sampling schedule is approved by NRC.
30-02 KD; 30-01 TRA MW-24 ALL	Dry; water level below screened interval (RAML 2019)	Not sampled	Propose removal from monitoring program in a future License amendment.
5-04 ALL	5-04 ALL was damaged due to floods in August 2021	Not sampled	This well cannot be sampled in its current condition. RAML submitted a request to amend the License to install and sample a new alluvial monitoring well to replace damaged well 5-04 ALL.
32-04 TRA; 36-07 KD; 36-08 TRA; 31-03 KD; 5-10 ALL; 30-05 TRA; 30-06 TRB; 30-07 KD	Installed in 2019 (INTERA 2017)	Change from quarterly to semi-annual sampling	RAML completed 8 quarters of monitoring for these wells and changed the sampling frequency to semi-annual starting in H1 of 2022 (RAML 2022a). These wells are not subject to License monitoring requirements. As a courtesy to NRC, RAML will continue to provide laboratory and field data from these wells as a separate appendix in semiannual reports.

5.0 REFERENCES

- Intera. 2017. Rio Algom Mining, LLC's Ambrosia Lake Mill Site Data Collection Work Plan in Support of Additional Alternate Concentration Limits. November. ML17340A826.
- Intera. 2018. Groundwater Modeling for Closure of Old Stope Leaching Operations, Ambrosia Lake Facility. May.
- Intera. 2022. Summary of Investigation of Groundwater Conditions at 36-06 KD and 36-07 KD. June 6. ML22174A016.
- Nuclear Regulatory Commission (NRC), United States. 2022. SUA-1473 Docket No. 40-8905, NRC Materials License SUA 1473, Amendment 63. February 2. ML22024A446.
- RAML. 2019. SUA-1473 Docket 40-8905, Groundwater Stability Monitoring Report First Half 2019, Rio Algom Mining LLC, Ambrosia Lake Facility. ML19219A137.
- RAML. 2020. Ambrosia Lake Facility Quarterly Groundwater Monitoring Report, Third Quarter 2020. December 1. ML21056A012.
- RAML. 2022a. SUA-1473 Docket 40-8905, Groundwater Stability Monitoring Report Second Half 2021, Rio Algom Mining LLC, Ambrosia Lake Facility. ML22041A324.
- RAML. 2022b. SUA-1473 Docket 40-8905, Request for Amendment to SUA-1473 Regarding the Replacement of Alluvial Monitoring Well 5-04 ALL, Rio Algom Mining LLC, Ambrosia Lake Facility. ML22147A179.



APPENDIX 1

Stability Monitoring Plan
Analytical Results

Appendix 1A: RIO ALGOM MINING LLC
First Half 2022 ACL Parameters

Dakota Well Results

Well	Date	Depth to Water	Total Depth	Spec. Cond. (field)	Temp. (field)	pH (field)	Chloride	Nitrate	Sulfate	TDS	Ni	U	Pb-210	Ra-226 + Ra-228	Th-230
Unit	ft BTOC	ft BTOC	μS/cm	°C	s.u.	mg/L	mg/L	mg/L	mg/L	mg/L	mg/L	mg/L	pCi/L	pCi/L	pCi/L
Alternate Concentration Limit							3,200	22.8	6,480	14,100	6.8	1.6	62	218	945
17-01 KD	2/2/2022	NM	NM	1,725	13.2	8.89	14.1	<0.02	710	1,060	<0.0004	<0.0001	6.9	2.95*	368
30-02 KD	2/3/2022														
DRY															
30-48 KD-R	2/8/2022	329.03	365.50	9,534	12.3	6.63	544	<0.02	2,350	4,240	<0.002	<0.0005	0.85	6.9	1.68
30-48 KD-R (DUP-04)	2/8/2022	329.03	365.50	9,534	12.3	6.63	551	<0.02	2,270	4,180	<0.002	<0.0005	-10	15.4	2.89
32-45 KD-R	2/3/2022	258.34	278.71	**	NM	7.02	82.4	0.056 B	596	1290	0.00140	0.0360	-16	2.95	0.081
36-06 KD	2/10/2022	187.93	NM	**	16.2	3.05	1,200	0.025 B	3,930	6,680	0.173	0.704	3.2	17.5	26
5-02 KD	2/12/2022	187.25	191.85	NM	NM	NM	10.1	NA	364	NA	0.00063 B	0.00289	36	-0.48*	0.276

TRA Well Results

Well	Date	Depth to Water	Total Depth	Spec. Cond. (field)	Temp. (field)	pH (field)	Chloride	Nitrate	TDS	Sulfate	Pb-210	Ra-226 + Ra-228	Th-232
Unit		ft BTOC	ft BTOC	µS/cm	°C	s.u.	mg/L	mg/L	mg/L	mg/L	pCi/L	pCi/L	pCi/L
Alternate Concentration Limit							1,070	9.2	6,400	2,584	62	218	945
30-01 TRA	2/8/2022	DRY											
31-01 TRA-R	2/9/2022	204.92	220	3,736	11.8	7.07	14.7	0.076 B	1,560	1,030	14	2.43*	0.537
33-01 TRA	2/8/2022	118.56	163.73	3,648.2	NM	7.77	32.0	<0.02	2,810	1,920	-16	3.50	0.641

TRB Well Results

Well	Date	Depth to Water	Total Depth	Spec. Cond. (field)	Temp. (field)	pH (field)	Chloride	Nitrate	TDS	Sulfate	Ni	U	Pb-210	Ra-226 + Ra-228	Th-230
Unit	ft BTOC	ft BTOC	μS/cm	°C	s.u.	mg/L	mg/L	mg/L	mg/L	mg/L	mg/L	mg/L	pCi/L	pCi/L	pCi/L
Alternate Concentration Limit							2810	7.7	11,700	4760	6.8	1.6	62	218	945
19-77 TRB	2/3/2022	271.74	288.40	4,638	10.4	7.25	16.5	0.319	3,690	2,260	0.00187 B	0.00808	1.4	3.02*	0.61
31-02 TRB-R	2/7/2022	98.69	128.41	9,843	NM	6.44	1,270	<0.02	7,780	3,720	<0.002	0.00559	3.7	12.9	0.584
31-67 TRB	2/4/2022	41.88	96.55	9,415	11.6	6.02	1,110	<0.02	7,350	3,640	0.00834	0.0129	41	14.2	0.837
36-01 TRB	2/8/2022	57.80	58.37												
36-02 TRB	2/8/2022	52.54	57.48	**	11.3	6.60									
Insufficient Water															
Insufficient Recharge															

Appendix 1A: RIO ALGOM MINING LLC
First Half 2022 ACL Parameters

Alluvial Well Results

Well	Date	Depth to Water	Total Depth	Spec. Cond. (field)	Temp. (field)	pH (field)	Chloride	Nitrate	TDS	Sulfate	Mo	Ni	Se	U	Pb-210	Ra-226 + Ra-228	Th-230
Unit	ft BTOC	ft BTOC	ft BTOC	µS/cm	°C	s.u.	mg/L	mg/L	mg/L	mg/L	mg/L	mg/L	mg/L	mg/L	pCi/L	pCi/L	pCi/L
Alternate Concentration Limit																	
5-73 ALL-R	2/8/2022	26.82	35.9	9,812.1	NM	6.76	1,800	5.04	7,160	2,860	0.00737	0.0111	0.182	1.99	-1.6	13.29*	3.6
5-03 ALL-R	2/8/2022	32.34	55.85	6,464.7	NM	6.90	858	0.952	4,950	2,470	<0.001	0.00213 B	0.0077	0.130	-0.05	2.01*	1.4
5-03 ALL-R (DUP-03)	2/8/2022	32.34	55.85	6,464.7	NM	6.90	848	0.934	5,070	2,600	0.00130 B	0.00240 B	0.0071	0.126	1.5	4.93*	3.17
5-04 ALL	2/9/2022	Well Collapsed															
5-08 ALL-R	2/8/2022	41.2	76.55	4,402.5	NM	7.39	97.6	26.5	3,950	2,570	0.00487	0.00196 B	0.0111	0.0272	1.2	2.33*	1.4
31-61 ALL	2/4/2022	19.57	29	17,099	NM	6.28	2,490	10.2	14,200	6,900	<0.002	0.0527	0.0055	0.743	-26	2.13*	2.24
31-65 ALL	2/4/2022	16.65	41.46	12,387	NM	6.19	2,680	<0.4	15,900	7,890	0.00227 B	0.135	0.0051	0.0911	-0.26	8.85*	3.68
32-59 ALL	2/7/2022	27.72	35.04	8,371.7	NM	6.68	1,690	9.98	6,240	2,290	0.00233 B	0.00518	0.0602	0.585	0.49	-0.13*	7.97
MW-24 ALL	2/10/2022	DRY															

Notes:

Exceedances are bolded.

<= constituent was not detected above the method detection limit.

B = the analyte was detected at a value between method detection limit and practical quantitation limit. The associated value is an estimated quantity.

H = the analysis exceeded the method hold time

NA = not analyzed

NM = not measured

Monitoring wells 30-02 KD, 30-01 TRA, 36-01 TRB, and MW-24 ALL contained insufficient water for sample collection.

Monitoring well 36-02 TRB did not recharge with sufficient water for sample collection.

* = either Ra-226, Ra-228, or both were not detected above the lower level of detection (LLD); in this case, the LLD was used in the sum in lieu of the reported result.

** = erroneous results due to equipment malfunction; therefore value not reported.

µS/cm = microSiemen per centimeter

°C = degree Celsius

ACL = alternate concentration limit

ft BTOC = feet below top of casing

mg/L = milligram per liter

pCi/L = picocurie per liter

Spec. Cond. = specific conductivity

s.u. = standard units

TDS = total dissolved solids

Temp. = temperature

Appendix 1B: RIO ALGOM MINING LLC
First Half 2022 GPS Parameters

Dakota Well Results

Well	Date	Depth to Water	Total Depth	Spec. Cond.	Temp	pH	Cyanide	As	Be	Cd	Mo	Pb	Sb	Se
Unit		ft BTOC	ft BTOC	µS/cm	°C	s.u.	mg/L	mg/L	mg/L	mg/L	mg/L	mg/L	mg/L	mg/L
Groundwater Protection Standard							0.04	0.1	0.01	0.01	0.06	0.14	0.05	0.04
17-01 KD	2/2/2022	NM	NM	1,725	13.2	8.89	<0.003 H	<0.0002	<0.00008	<0.00005	0.00209	<0.0001	<0.0004	<0.002
30-02 KD	2/3/2022	DRY												
30-48 KD-R	2/8/2022	329.03	365.50	9,534	12.3	6.63	<0.003 H	<0.001	<0.0004	<0.00025	0.0219	<0.0005	<0.002	<0.002
48 KD-R (DUP)	2/8/2022	329.03	365.50	9,534	12.3	6.63	<0.003 H	<0.001	<0.0004	<0.00025	0.0211	<0.0005	<0.002	<0.002
32-45 KD-R	2/3/2022	258.34	278.71	**	NM	7.02	<0.003 H	0.00041 B	<0.00008	0.000057 B	0.0924	<0.0001	0.00052 B	<0.002
36-06 KD	2/10/2022	187.93	NM	**	16.2	3.05	<0.003 H	0.0172	0.0170	0.00725	<0.001	0.00063 B	<0.002	0.0028 B
5-02 KD	2/12/2022	187.25	191.85	NM	NM	NM	NA	<0.0002	<0.00008	<0.00005	0.00023 B	<0.0001	<0.0004	<0.002

TRA Well Results

Well	Date	Depth to Water	Total Depth	Spec. Cond. (field)	Temp. (field)	pH (field)	Cyanide	Mo	Ni	Se	U
Unit		ft BTOC	ft BTOC	µS/cm	°C	s.u.	mg/L	mg/L	mg/L	mg/L	mg/L
Groundwater Protection Standard							0.01	0.03	0.05	0.03	0.01
30-01 TRA	2/8/2022	DRY									
31-01 TRA-R	2/9/2022	204.92	220	3,736	11.8	7.07	<0.003 H	0.00449	0.00311	<0.002	0.00089
33-01 TRA	2/8/2022	118.56	163.73	3,648.2	NM	7.77	<0.003 H	0.00285	<0.0008	<0.002	0.00045 B

TRB Well Results

Well	Date	Depth to Water	Total Depth	Spec. Cond. (field)	Temp. (field)	pH (field)	Cyanide	Mo	Se
Unit		ft BTOC	ft BTOC	µS/cm	°C	s.u.	mg/L	mg/L	mg/L
Groundwater Protection Standard							0.01	0.08	0.04
19-77 TRB	2/3/2022	271.74	288.40	4,638	10.4	7.25	<0.003 H	0.00343	<0.002
31-02 TRB-R	2/7/2022	98.69	128.41	9,843	NM	6.44	<0.003 H	<0.001	<0.002
31-67 TRB	2/4/2022	41.88	96.55	9,415	11.6	6.02	0.004 BH	<0.001	<0.002
36-01 TRB	2/8/2022	57.80	58.37	Insufficient Water					
36-02 TRB	2/8/2022	52.54	57.48	**	11.3	6.60	Insufficient Recharge		

Notes:

Exceedances are bolded.

* = 19-77 TRB is a background well and is not screened against standards.

** = erroneous results due to equipment malfunction; therefore value not reported.

<= constituent was not detected above the method detection limit.

B = the analyte was detected at a value between MDL and practical quantitation limit. The associated value is an estimated quantity.

H = the analysis exceeded the method hold time

NM = Not Measured

NA = not analyzed

Monitoring wells 30-02 KD, 30-01 TRA, 36-01 TRB, and MW-24 ALL contained insufficient water for sample collection.

Monitoring well 36-02 TRB did not recharge with sufficient water for sample collection.

µS/cm = microSiemen per centimeter

°C = degree Celsius

ft BTOC = feet below top of casing

GPS = groundwater protection standard.

MDL = method detection limit

mg/L = milligram per liter

Spec. Cond. = specific conductivity

s.u. = standard units

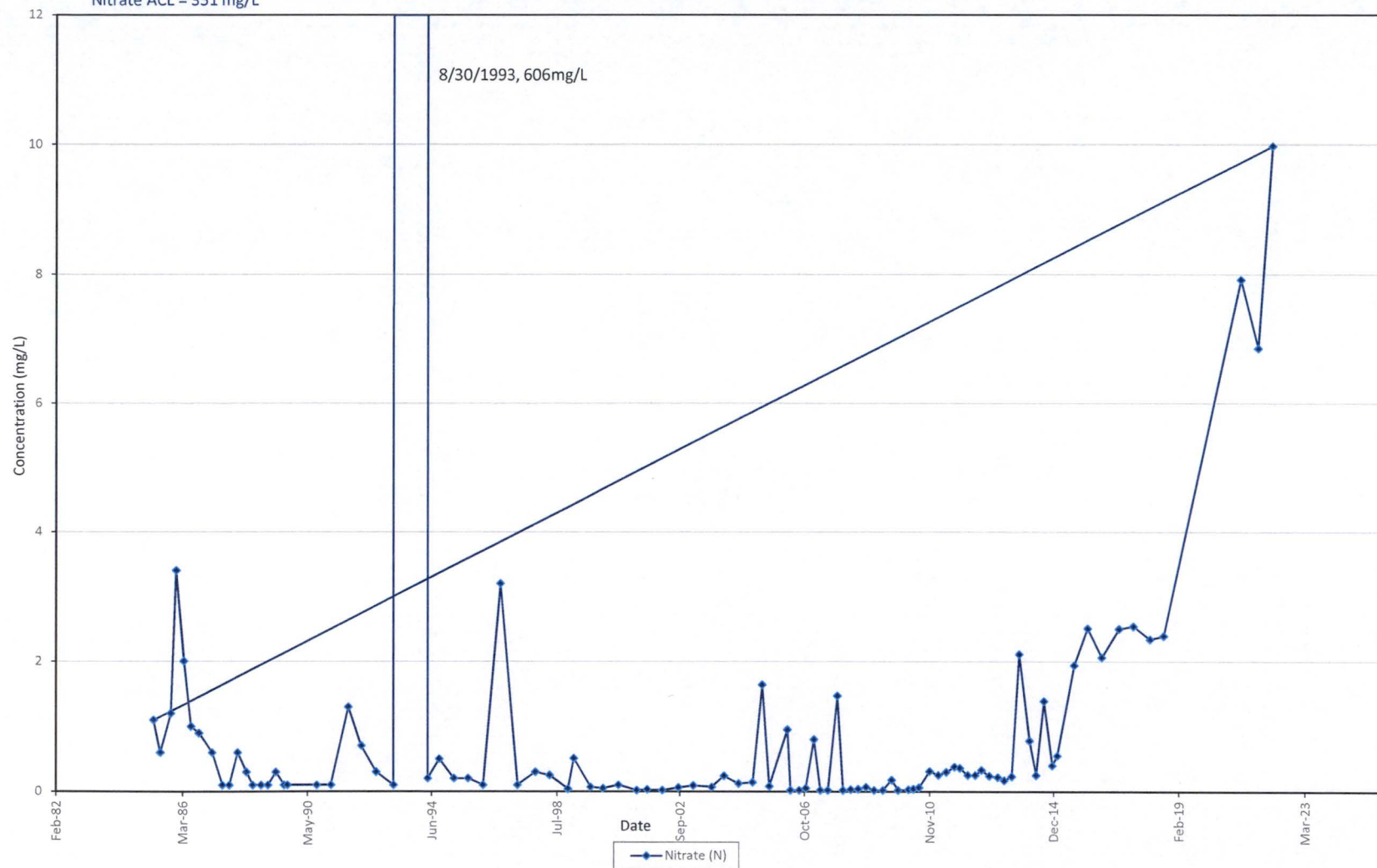
Temp = temperature

APPENDIX 2

Stability Monitoring Plan
Time Versus Concentration Plots

Nitrate in Monitoring Well 32-59 ALL

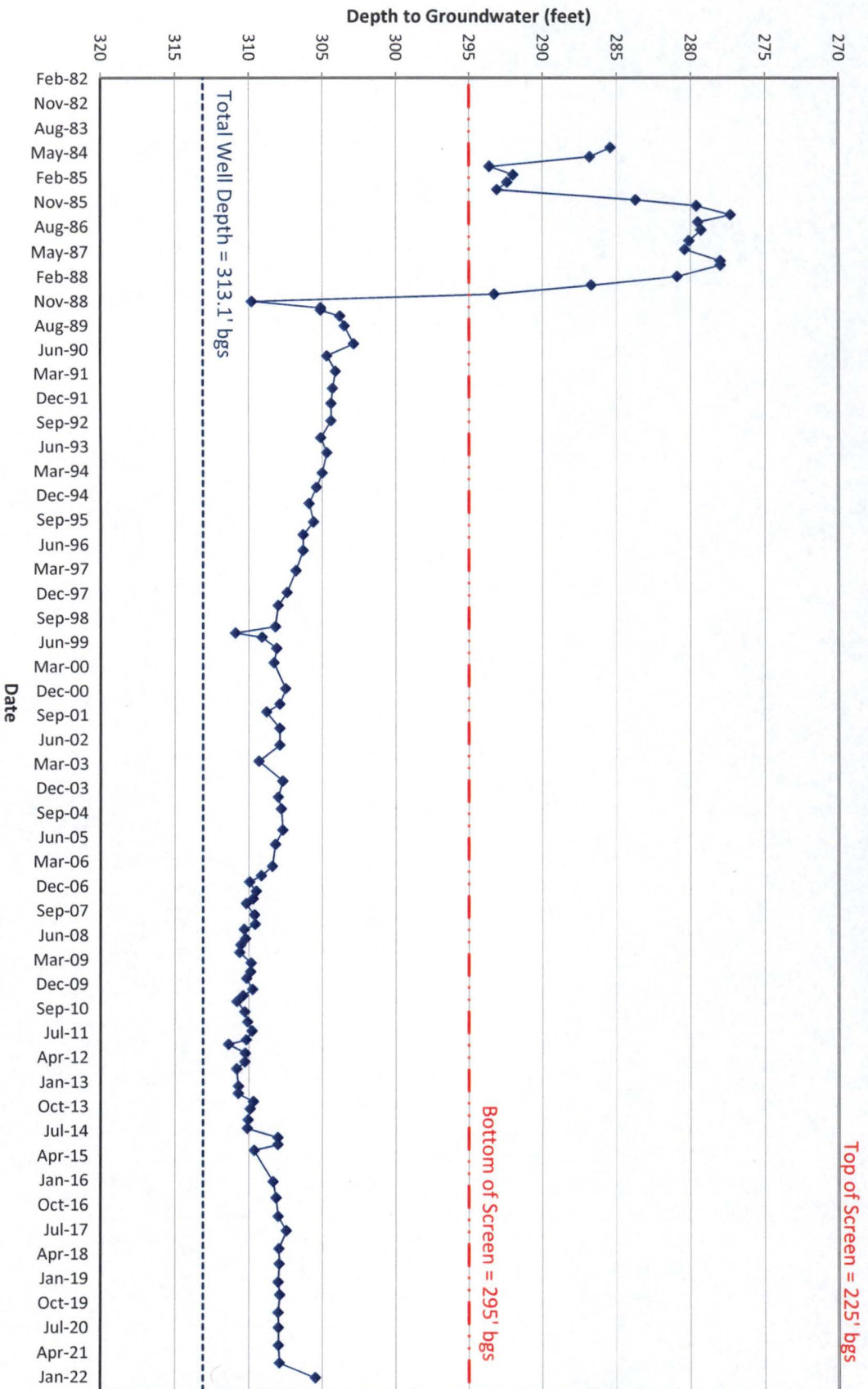
Nitrate ACL = 351 mg/L



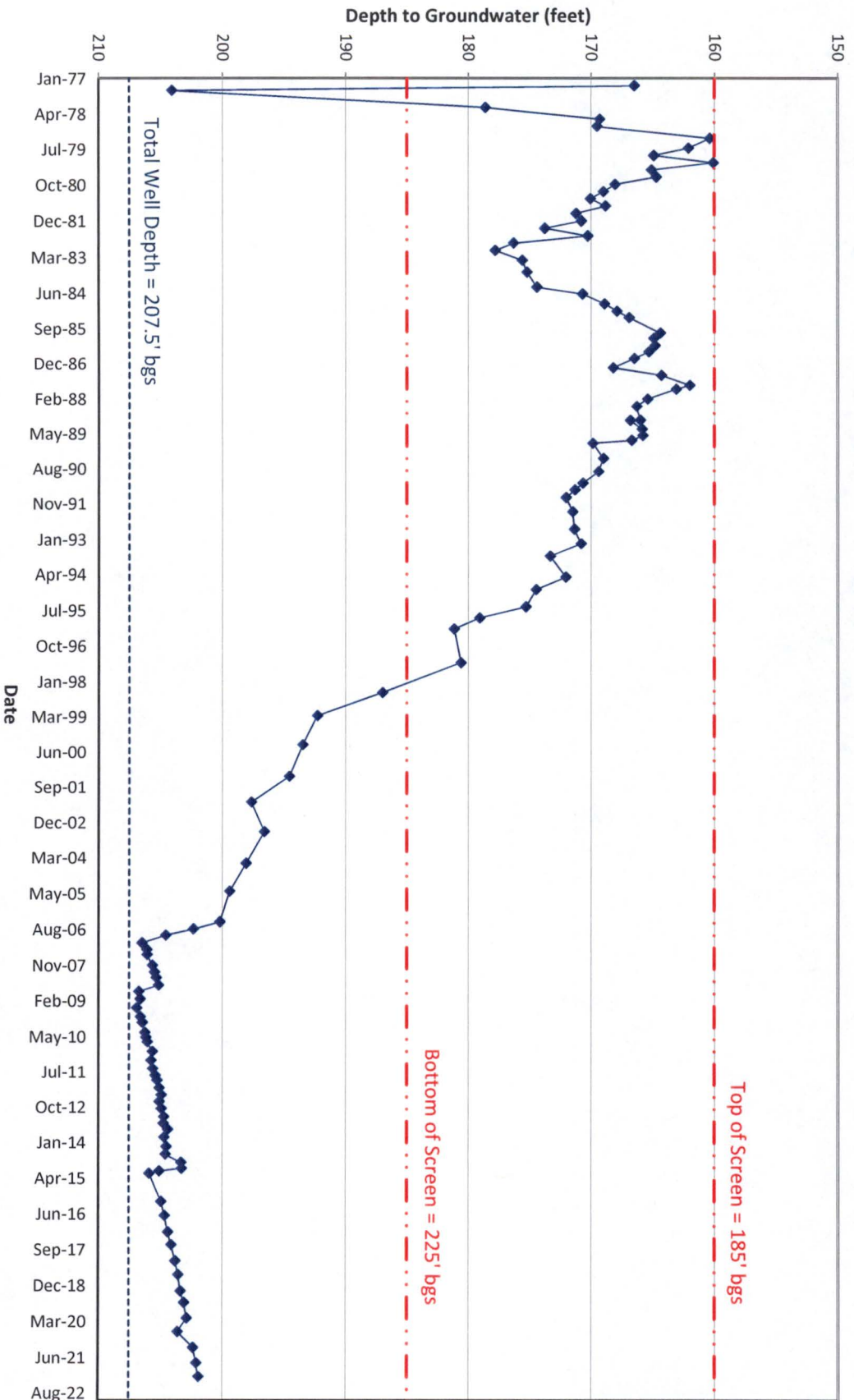
APPENDIX 3

Stability Monitoring Plan
Hydrographs

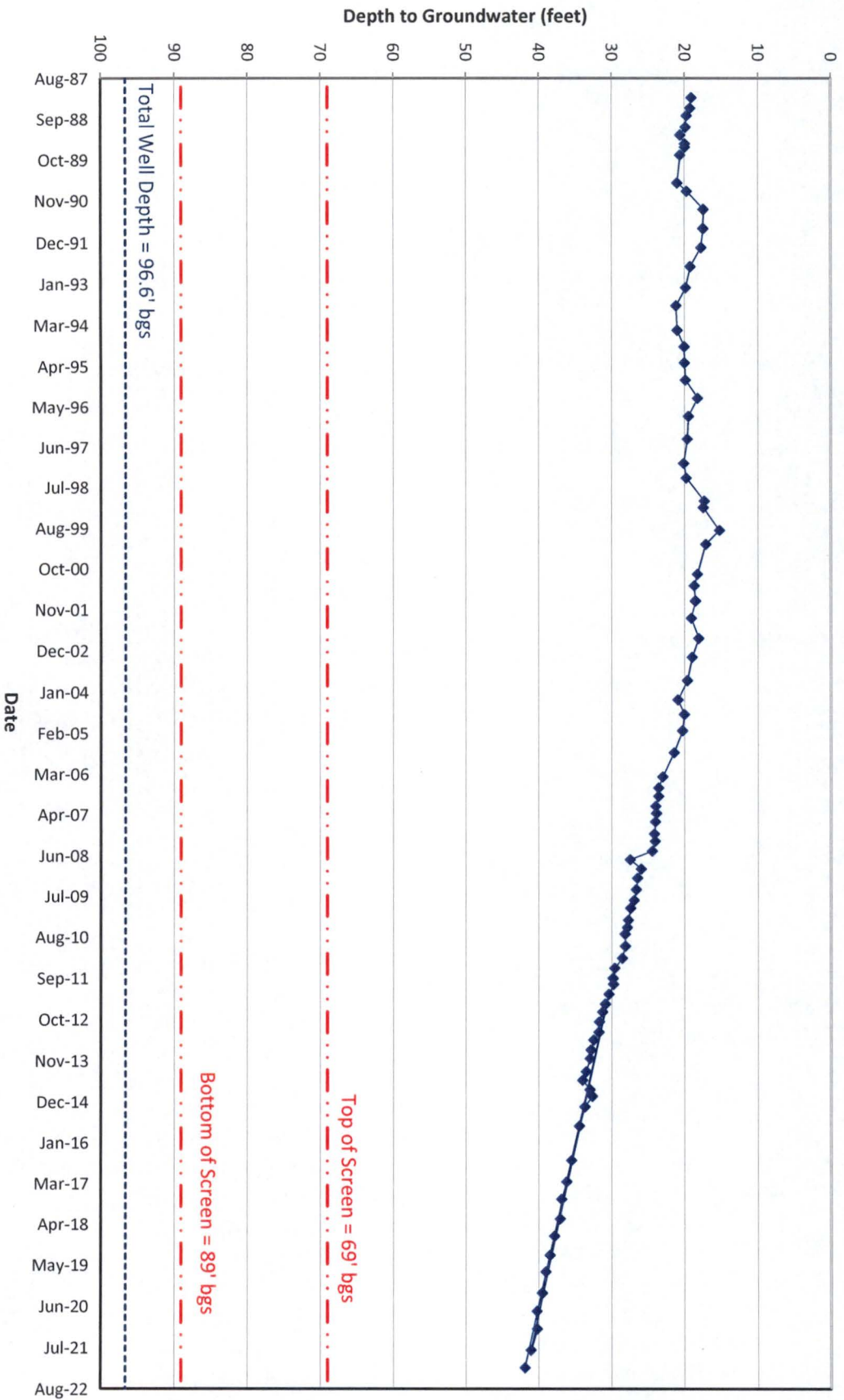
Hydrograph for Dakota Monitoring Well 30-02 KD



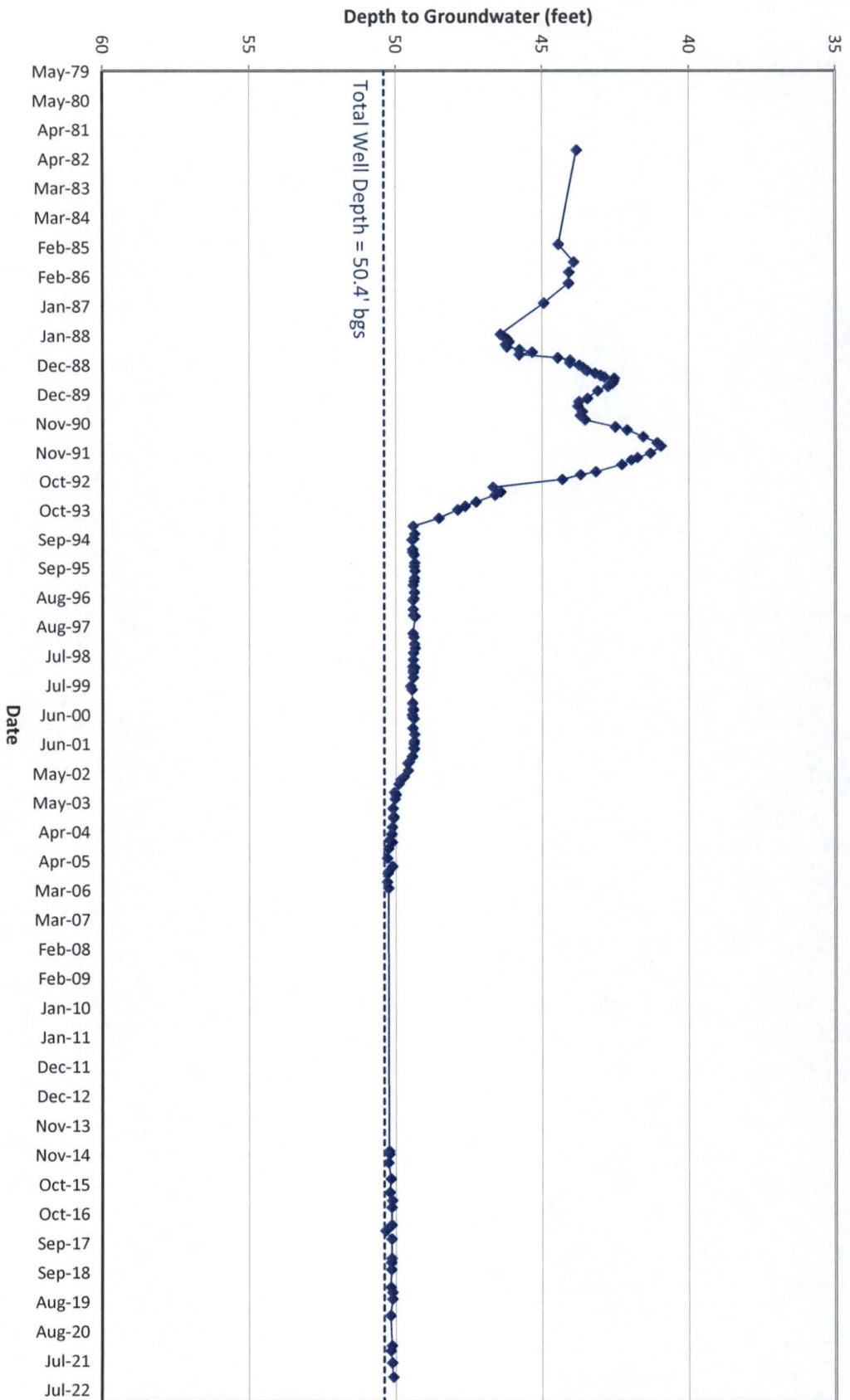
Hydrograph for TRA Monitoring Well 30-01 TRA



Hydrograph for TRB Monitoring Well 31-67 TRB



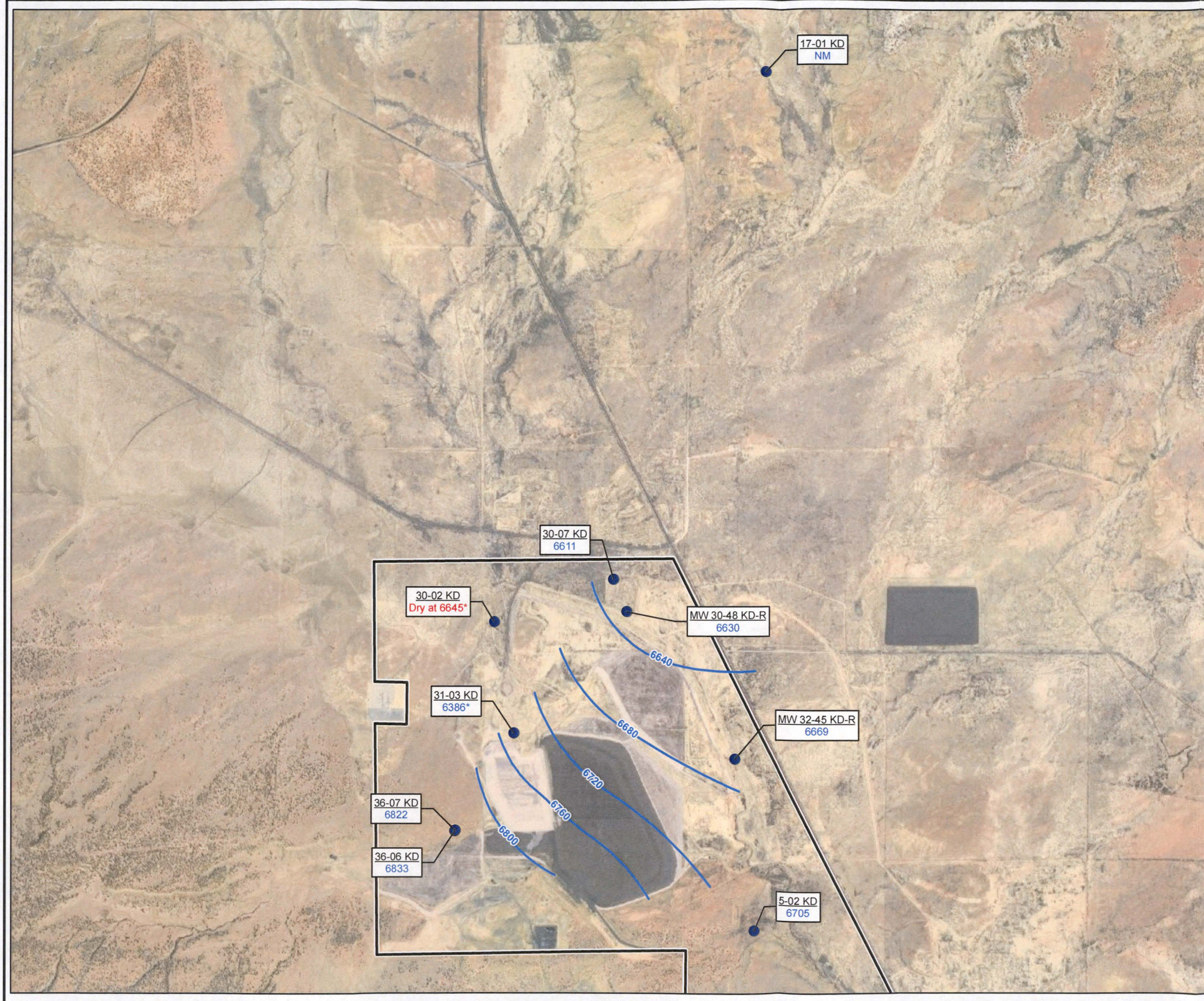
Hydrograph for Alluvial Monitoring Well MW-24 ALL



APPENDIX 4

Stability Monitoring Plan
Potentiometric Surface Maps

T:_ENV\BHP\Ambrosia\MXD\NRC Semiannual 1H 2022\Figure 4-1 Dakota Contour Map.mxd 6/29/2022 4:13:30 PM



LEGEND

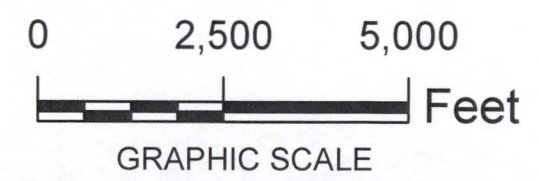
- Dakota Monitoring Well
- KD Potentiometric Surface Elevations (ft amsl)
- ▭ Proposed Long-Term Surveillance and Maintenance (LTSM) Boundary
- Well ID
Groundwater Surface Elevation (ft amsl)
- * Elevation at bottom of screen (Appendix 3). Data not used in contouring.
- * Data not used in contouring.
- NM Not Measured

NOTES:

1. Groundwater elevations measured in February 2022.
2. Groundwater elevation measured in March 2022 for well ID 30-07 KD

Gradient calculation:
(Difference in Groundwater Elevation Between Point of Compliance Well 36-06 KD and 30-07 KD = 6,834 - 6,611 = 223 feet) Divided by (Distance Along a Flow Path Between Point of Compliance Well 36-06 KD and 30-07 KD = 7,731 feet)
= 0.029 feet per foot

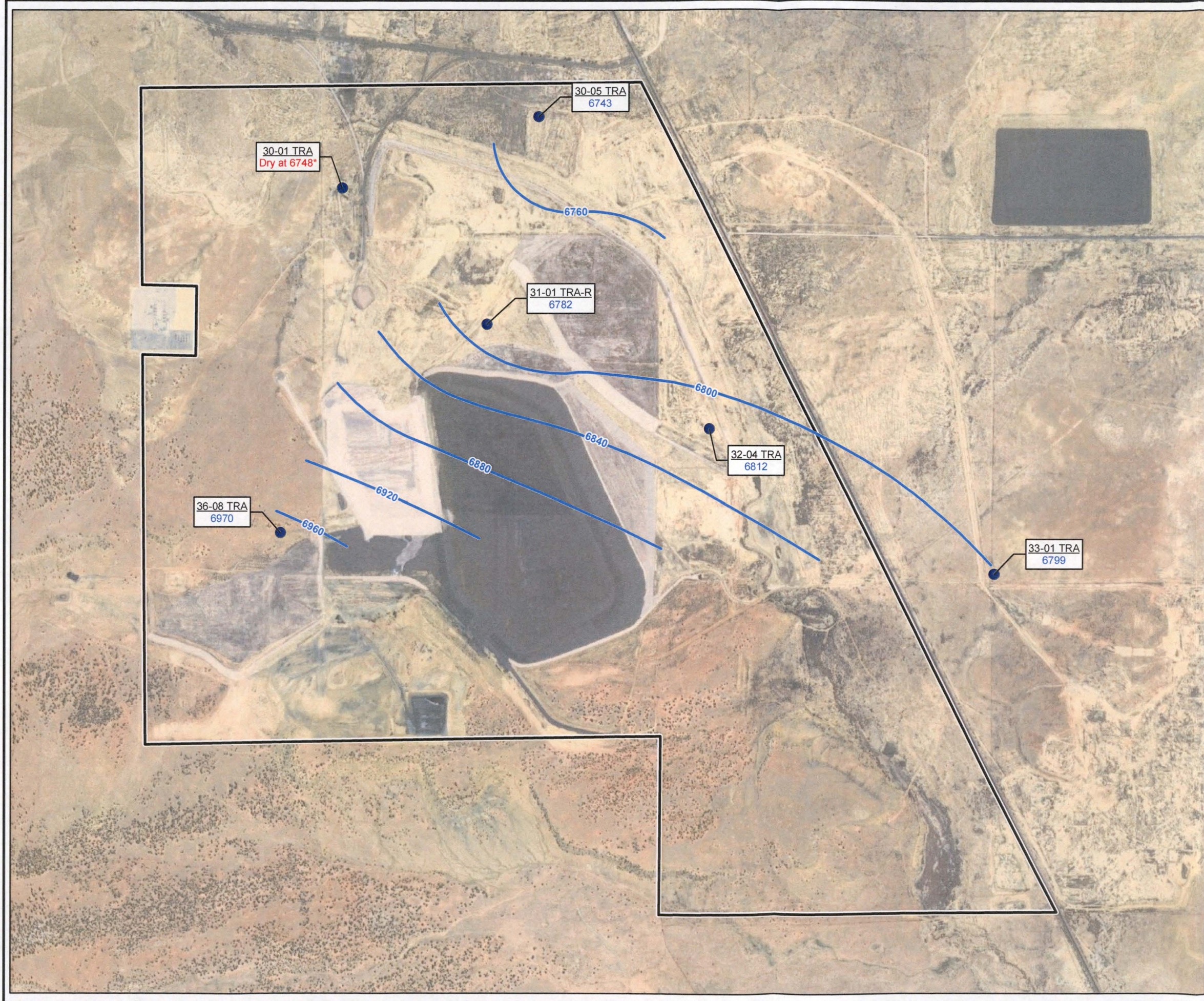
Source: Esri, Maxar, GeoEye, Earthstar Geographics, CNES/Airbus DS, USDA, USGS, AeroGRID, IGN, and the GIS User Community



RIO ALGOM MINING LLC
AMBROSIA LAKE WEST FACILITY
MCKINLEY COUNTY, NEW MEXICO
GROUNDWATER MONITORING REPORT - 1H 2022

DAKOTA POTENTIOMETRIC
SURFACE ELEVATION CONTOURS MAP

T:_ENV\BHP\Ambrosia\MXD\NRC Semiannual 1H 2022\Figure 4-2 TRA Contour Map.mxd 6/29/2022 4:16:59 PM



LEGEND

- TRA Monitoring Well Location
- TRA Potentiometric Surface Elevations (ft amsl)
- ▭ Proposed Long-Term Surveillance and Maintenance (LTSM) Boundary

Well ID
Groundwater Surface Elevation (ft amsl)

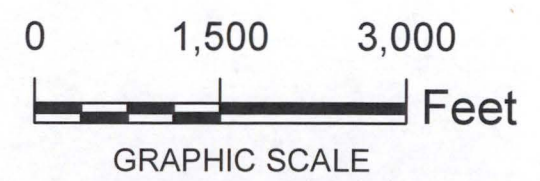
* Elevation at bottom of screen (Appendix 3).
Data not used in contouring.

NOTE:
Groundwater elevation measured in
February 2022

Gradient calculation:
(Difference in Groundwater Elevation
Between MW 36-08 TRA and
30-05 TRA = 6,970 - 6,743 = 227 feet)
Divided by (Distance Along a Flow
Path Between MW 36-08 TRA and
30-05 TRA = 7,678 feet)

= 0.030 feet per foot

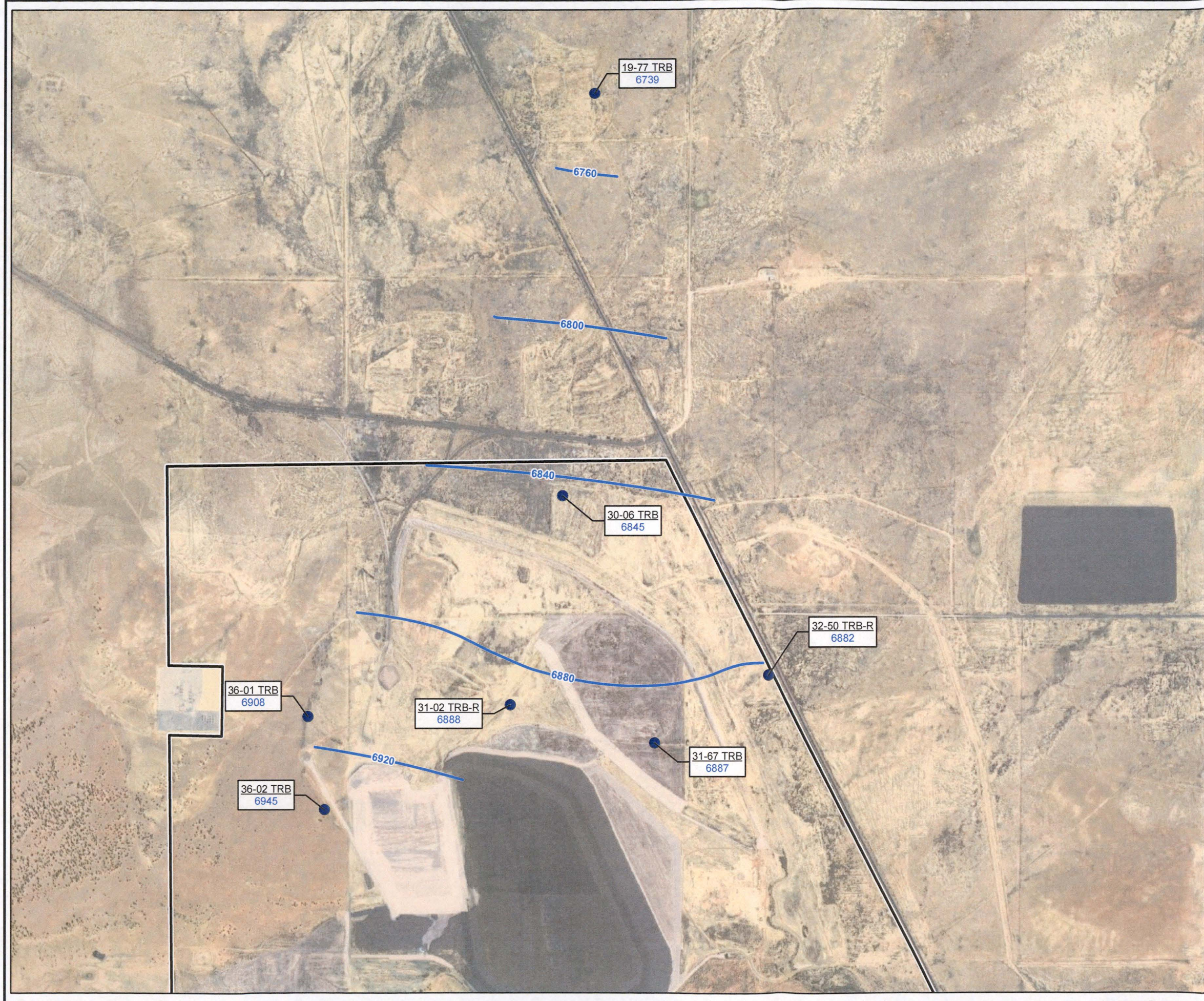
Source: Esri, Maxar, GeoEye, Earthstar Geographics,
CNES/Airbus DS, USDA, USGS, AeroGRID, IGN,
and the GIS User Community



RIO ALGOM MINING LLC
AMBROSIA LAKE WEST FACILITY
MCKINLEY COUNTY, NEW MEXICO
GROUNDWATER MONITORING REPORT - 1H 2022

TRA POTENTIOMETRIC
SURFACE ELEVATION CONTOURS MAP

T:_ENV\BHP\Ambrosia\MXD\NRC Semiannual 1H 2022\Figure 4-3 TRB Contour Map.mxd 6/29/2022 4:18:33 PM



LEGEND

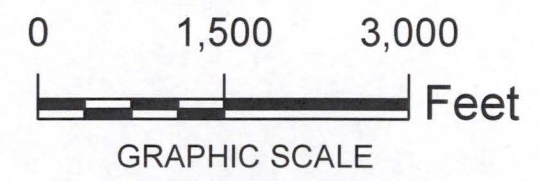
- TRB Monitoring Well Location
- TRB Potentiometric Surface Elevations (ft amsl)
- ▭ Proposed Long-Term Surveillance and Maintenance (LTSM) Boundary
- Well ID
Groundwater Surface Elevation (ft amsl)

NOTE:
Groundwater elevation measured in
February 2022

Gradient calculation:
(Difference in Groundwater Elevation
Between Point of Compliance
Well 31-02 TRB-R and far downgradient
Well 19-77 TRB = 6,888 - 6,739 = 149 feet)
Divided by
(Distance Along a Flow Path
Between Point of Compliance
Well 31-02 TRB-R and far downgradient
Well 19-77 TRB = 9,664 feet)

= 0.015 feet per foot

Source: Esri, Maxar, GeoEye, Earthstar Geographics,
CNES/Airbus DS, USDA, USGS, AeroGRID, IGN,
and the GIS User Community

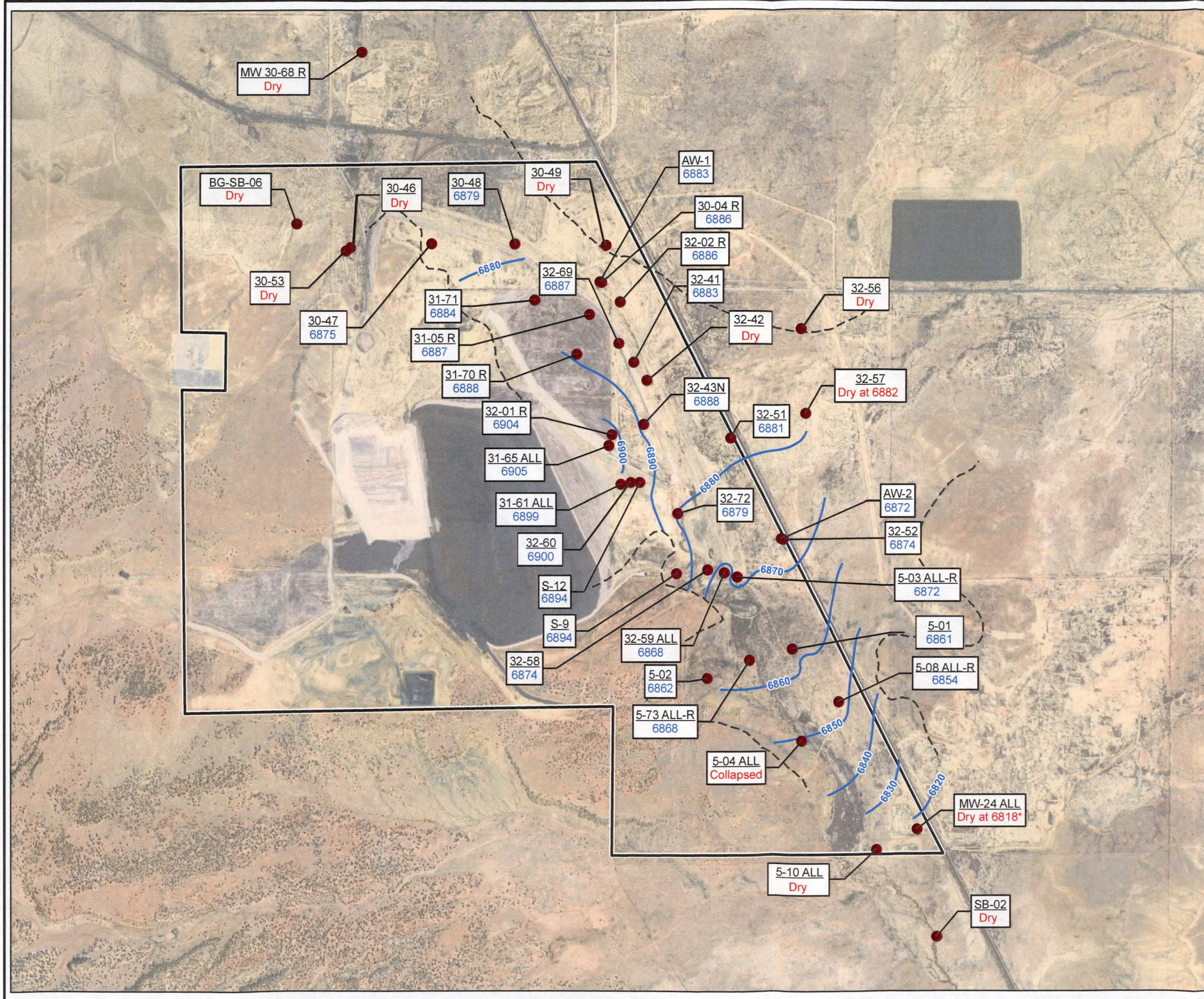


RIO ALGOM MINING LLC
AMBROSIA LAKE WEST FACILITY
MCKINLEY COUNTY, NEW MEXICO
GROUNDWATER MONITORING REPORT - 1H 2022

TRB POTENTIOMETRIC
SURFACE ELEVATION CONTOURS MAP



T:_ENV\BHP\Ambrosia\MXD\NRC Semiannual 1H 2022\Figure 4-4 Alluvial Contour Map.mxd 7/14/2022 1:06:05 PM



LEGEND

- Alluvial Monitoring Well Location
- Alluvial Groundwater Surface Elevation (ft amsl)
- Estimated Boundary of Saturated Alluvium
- Proposed Long-Term Surveillance and Maintenance (LTSM) Boundary

Well ID	Groundwater Surface Elevation (ft amsl)
30-68 R	Dry
BG-SB-06	Dry
30-53	Dry
30-47	6875
30-46	Dry
30-48	6879
30-49	Dry
AW-1	6883
30-04 R	6886
32-02 R	6886
32-41	6883
32-69	6887
31-71	6884
31-05 R	6887
31-70 R	6888
32-01 R	6904
31-65 ALL	6905
31-61 ALL	6899
32-60	6900
S-12	6894
S-9	6894
32-58	6874
32-59 ALL	6868
5-02	6862
5-73 ALL-R	6868
5-04 ALL	Collapsed
5-10 ALL	Dry
AW-2	6872
32-72	6879
32-51	6881
32-42	Dry
32-56	Dry
32-57	Dry at 6882
32-52	6874
5-03 ALL-R	6872
5-01	6861
5-08 ALL-R	6854
MW-24 ALL	Dry at 6818*
SB-02	Dry

* Elevation at bottom of screen (Appendix 3). Data not used in contouring.
* Data not used in contouring.

NOTE:
Groundwater elevation measured in February 2022

Gradient calculation:
(Difference in Groundwater Elevation Between Point of Compliance Well 31-61 ALL and Trend Well 5-08 ALL-R = 6,899 - 6,854 = 45 feet) Divided by (Distance Along a Flow Path Between Point of Compliance Well 31-61 ALL and Trend Well 5-08 ALL-R = 5,802 feet)
= 0.008 feet per foot

Source: Esri, Maxar, GeoEye, Earthstar Geographics, CNES/Airbus DS, USDA, USGS, AeroGRID, IGN, and the GIS User Community

01,8003,600

Feet

GRAPHIC SCALE

RIO ALGOM MINING LLC
AMBROSIA LAKE WEST FACILITY
MCKINLEY COUNTY, NEW MEXICO
GROUNDWATER MONITORING REPORT - 1H 2022

ALLUVIAL POTENTIOMETRIC
SURFACE ELEVATION CONTOUR MAP

ARCADIS

APPENDIX 5

Analytical Lab Reports and EDDs For License Wells
(Electronic Submittal Only)

APPENDIX 6

Tabulated Analytical Results for H1 2022
ACL Program Wells

Appendix 6
Analytical Results and Field Measurements for ACL Program Wells



Station Name		30-05 TRA	30-05 TRA (DUP-01)	30-06 TRB	30-06 TRB (DUP-02)	30-07 KD	31-03 KD	31-03 KD (DUP-05)	32-04 TRA	36-07 KD	36-08 TRA
Sample Date		2/7/2022	2/7/2022	2/7/2022	2/7/2022	3/19/2022	2/8/2022	2/8/2022	2/2/2022	2/7/2022	2/7/2022
Parameter	Units										
Depth to Water	ft	213.8	213.8	111.4	111.4	345.32	325.88	325.88	108.61	202.2	53.92
Total Depth	ft	234.45	234.45	135.5	135.5	NM	344.7	344.7	127	206.18	70.09
Groundwater Elevation	ft amsl	6,742.89	6,742.89	6,845.35	6,845.35	6,610.96	6,386.45	6,386.45	6,811.71	6,822.49	6,969.83
Dissolved Oxygen	mg/L	0.33	0.33	1.15	1.15	0.41	0.68	0.68	1.78	0.59	0.18
Oxidation Reduction Potential	mv	75.3	75.3	118.0	118.0	-79.6	39.6	39.6	227.9	-71.6	120.9
pH	s.u.	7.45	7.45	6.67	6.67	6.5	6.41	6.41	6.99	5.74	5.98
Specific Conductivity	µS/cm	2,932.9	2,932.9	7,691.8	7,691.8	4,871	15,141	15,141	2,367.9	10,680	40,171
Temperature	degrees C	NM	NM	NM	NM	15.9	13.7	13.7	NM	12.3	12.3
Alkalinity (as CaCO3)	mg/L	162	162	639	620	319	275	275	150	309	640
Aluminum	mg/L	<0.1	<0.1	<0.25	<0.25	<0.25	<0.25	<0.25	<0.05	<0.25	<1
Arsenic	mg/L	0.00310	0.00294 B	<0.001	<0.001	0.00218 B	0.00572	0.00548	0.00090 B	0.00330 B	<0.004
Barium	mg/L	0.0196 B	0.0200 B	<0.035	<0.035	<0.035	<0.035	0.0420 B	0.0164 B	<0.035	<0.14
Bicarbonate (as CaCO3)	mg/L	162	162	639	620	319	275	275	150	309	640
Boron	mg/L	0.425	0.431	0.494 B	0.480 B	0.171 B	0.194 B	<0.15	0.406	0.233 B	<0.6
Cadmium	mg/L	<0.0001	<0.00025	<0.00025	<0.00025	<0.00025	0.000258 B	<0.00025	<0.00005	<0.00025	0.00172 B
Calcium	mg/L	168	168	630	623	583	752	749	175	697	523
Carbonate (as CaCO3)	mg/L	<2	<2	<2	<2	<2	<2	<2	<2	<2	<2
Cation-Anion Balance	%	0.0	1.6	1.0	1.0	-7.6	0.5	-34.7	2.0	2.2	2.7
Chloride	mg/L	41.8	44.8	799	749	413	1,540	1,560	29.7 B	805	730
Chromium	mg/L	<0.001	<0.001	<0.0025	<0.0025	<0.0025	<0.0025	<0.0025	<0.0005	<0.0025	<0.01
Cobalt	mg/L	<0.04	<0.04	<0.1	<0.1	<0.1	<0.1	<0.1	<0.02	<0.1	<0.4
Copper	mg/L	<0.02	<0.02	<0.05	<0.05	<0.05	<0.05	<0.05	<0.01	<0.05	<0.2
Fluoride	mg/L	<1	<1	<2.5	<2.5	<2.5	<2.5	<2.5	<1	<2.5	<10
Hydroxide (as CaCO3)	mg/L	<2	<2	<2	<2	<2	<2	<2	<2	<2	<2
Iron	mg/L	<0.12	<0.12	7.06	<0.3	0.732 B	0.871	0.877	<0.06	12.4	<1.2
Lead	mg/L	<0.0002	<0.0005	<0.0005	<0.001	<0.0005	<0.0005	<0.0005	<0.0001	<0.0005	<0.002
Magnesium	mg/L	66.9	67.3	512	509	135	383	380	56.0	220	5190
Manganese	mg/L	0.143	0.157	0.401	0.377	2.10	7.17	7.07	<0.01	12.8	9.38
Mercury	mg/L	<0.0002	<0.0002	<0.0002	<0.0002	<0.0002	<0.0002	<0.0002	<0.0002	<0.0002	<0.0002
Molybdenum	mg/L	0.0125	0.0128	0.00242 B	0.00230 B	0.00675	1.29	1.34	0.00999	0.00128 B	<0.004
Nickel	mg/L	0.00131 B	0.00136 B	0.00668	0.00657	<0.002	0.00536	0.00576	0.00079 B	0.00606	0.111
Nitrate/Nitrite (as N)	mg/L	<0.02	<0.02	<0.02	<0.02	0.052 B	<0.02	<0.02	0.084 B	<0.2	99.4
Pb-210	pCi/L	0.17	1.2	9.6	-0.12	12	-2.7	-0.19	-1.2	1.2	13
Potassium	mg/L	8.01	7.94	15.1	14.8	9.78	16.1	16.1	7.33	16.1	20.3
Ra-226	pCi/L	0.42	0.39	1.5	1.7	1.5	8.5	8.4	<0.23	2.2	1.2
Ra-226+Ra-228	pCi/L	2.62*	1.99*	7.3	6.1	6.4	17.4	18.4	2.13*	5.8	8.4
Ra-228	pCi/L	<2.2	<1.6	5.8	4.4	4.9	8.9	10	<1.9	3.6	7.2
Th-230	pCi/L	1.56	1.88	1.43	1.13	0.065	0.557	0.341	1.16	3.11	0.68
Thallium	mg/L	<0.0002	<0.0005	<0.0005	<0.001	<0.0005	<0.0005	<0.0005	<0.0001	<0.0005	<0.002
Selenium	mg/L	<0.0002	<0.0005	<0.0005	<0.0005	<0.0005	<0.0005	<0.0005	0.00012 B	0.00136	0.131
Silver	mg/L	<0.02	<0.02	<0.05	<0.05	<0.05	0.296	<0.05	<0.01	<0.05	<0.2
Sodium	mg/L	387	386	546	542	324	642	649	258	355	399
Sulfate	mg/L	1,240	1,230	2,890	2,910	2,190	2,320	2,480	943	1,890	19,600
Sum of Anions	mEq/L	31	30	96	95	64	97	202	24	68	445
Sum of Cations	mEq/L	31	31	98	97	55	98	98	25	71	470
TDS (calculated)	mg/L	2,010	2,000	5,790	5,730	3,850	5,830	10,300	1,560	4,200	26,900
TDS (ratio - meas/calc)	Unitless	1.06	1.06	1.06	1.05	1.06	1.01	0.58	1.10	1.04	1.06
Total Dissolved Solids	mg/L	2,130	2,120	6,160	6,030	4,080	5,900	5,960	1,710	4,350	28,600
Uranium	mg/L	0.00278	0.00282	0.0739	0.0808	0.00073 B	0.0128	0.0113	0.00591	0.0274	0.0221
Zinc	mg/L	<0.04	<0.04	<0.1	<0.1	<0.1	<0.1	<0.1	<0.02	<0.1	<0.4

Notes:

* = either Ra-226, Ra-228, or both were not detected above the lower level of detection (LLD); in this case, the LLD was used in lieu of the reported result.

< = the parameter is less than the associated minimum detection limit (MDL) or lower limit of detection (LLD)

B = analyte was detected at a value between MDL and practical quantitation limit (PQL).

The associated value is an estimated quantity.

pCi/L = picocurie per liter

s.u. = standard units

TDS = total dissolved solids

Rio Algom Mining GWSMR

Semiannual Report

Appendix 6



APPENDIX 7

Analytical Lab Reports and EDDs For ACL Program Wells

(Electronic Submittal Only)