



United States Department of the Interior



BUREAU OF LAND MANAGEMENT
Uncompahgre Field Office
2465 South Townsend Ave.
Montrose, Colorado 81401

In Reply Refer To:
2310 (CO-S05)

APR 06 2022

Dear Interested Parties:

In accordance with the National Environmental Policy Act, the Bureau of Land Management (BLM), in coordination with U.S. Department of Energy (DOE) Office of Legacy Management (LM), is preparing an environmental assessment (EA) to consider two applications submitted by DOE LM requesting permanent withdrawal of about 70 acres of BLM-managed land, as well as a perpetual access road right-of-way (ROW). The BLM plans to open a 30-day public scoping period beginning **April 6, 2022**, to identify potential issues and concerns and additional information the BLM should consider in its analysis.

Project documents and information, including how to provide input, will be made available on the BLM ePlanning project website *Uncompahgre Field Office Durita Land Withdrawal Environmental Assessment* [DOI-BLM-CO-S050-2022-0013-EA] online at:
<https://eplanning.blm.gov/eplanning-ui/project/2018643/510>

The 160-acre Durita site is regulated under Title II of the Uranium Mill Tailings Radiation Control Act (UMTRCA) of 1978 (Title 42 United States Code Section 7901 [42 U.S.C. 7901]), as amended. The site sits at about 5,600 feet elevation and is located on private land and adjacent to BLM-administered public lands approximately 2.5 miles west of Naturita, Colorado, 100 miles south of Grand Junction, and about 2 miles west of the San Miguel River (See attached figures). A uranium mill operated on the site from 1977 through 1979.

DOE is requesting that the BLM transfer about 70 acres, adjacent to the Durita site to LM's jurisdiction to ensure the future protection of human health and the environment. LM would perform annual site inspections to confirm the integrity of visible features at the site and determine the need for maintenance, additional inspections, or monitoring. DOE also seeks a perpetual ROW for a BLM spur road from the Montrose County Road GG25 access road leading to the site. The total ROW would measure 1,200 feet by 30 feet and consist of 0.826 acres.

Public involvement

Let the BLM know about your issues, concerns, questions, or additional information related to the proposed action. The BLM will consider the public's substantive input in developing the EA, including the range of alternatives. The BLM will accept written comments on the proposal from **April 6, 2022 to May 6, 2022** by U.S. mail or online through the ePlanning project website.

INTERIOR REGION 7 • UPPER COLORADO BASIN
COLORADO, NEW MEXICO, UTAH, WYOMING

U.S. Mail: Attn: Durita Land Withdrawal EA Scoping
BLM Uncompahgre Field Office
2465 South Townsend Ave
Montrose, CO 81401

Project website: <https://eplanning.blm.gov/eplanning-ui/project/2018643/510>

The projected schedule for development of the EA is:

Prepare EA	<i>Late Summer 2022</i>
Release Final EA and issue Decision	<i>Fall 2022</i>

Please visit the project website to learn more about the project. If you have additional questions, contact Gina Phillips, District Planning and Environmental Coordinator, at 970-240-5381 or by email to gphillips@blm.gov.

**SUZANNE
COPPING**

Digitally signed by
SUZANNE COPPING
Date: 2022.04.04
13:00:59 -06'00'

Suzanne Copping
Uncompahgre Field Office
Field Manager

Cc:
Nicole Olin
NEPA Project Manager/Environmental Planner
ESH&Q (LM-24)
U.S. Department of Energy
Office of Legacy Management
2597 Legacy Way
Grand Junction, CO 81503

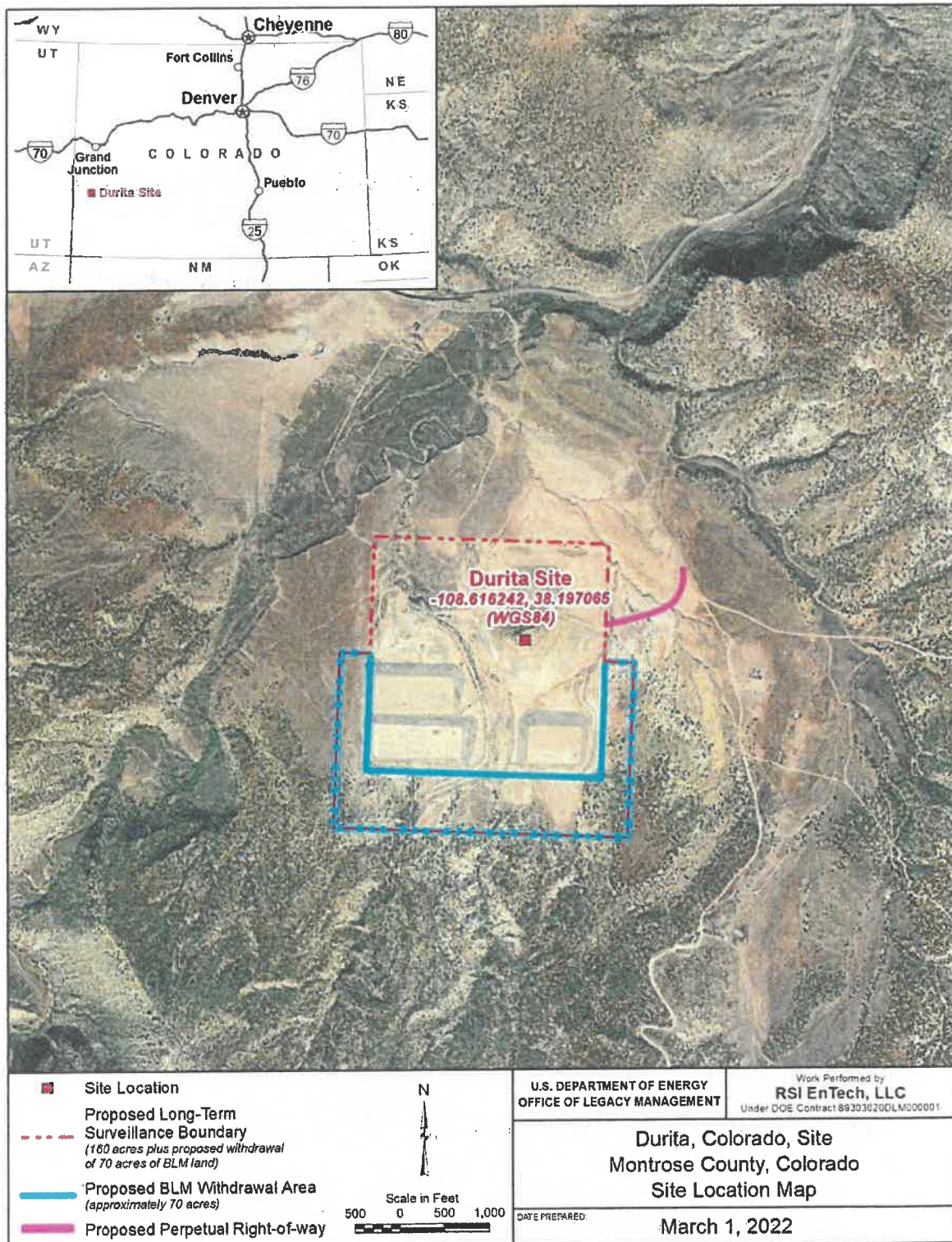


Figure 1. Durita, Colorado, site location.

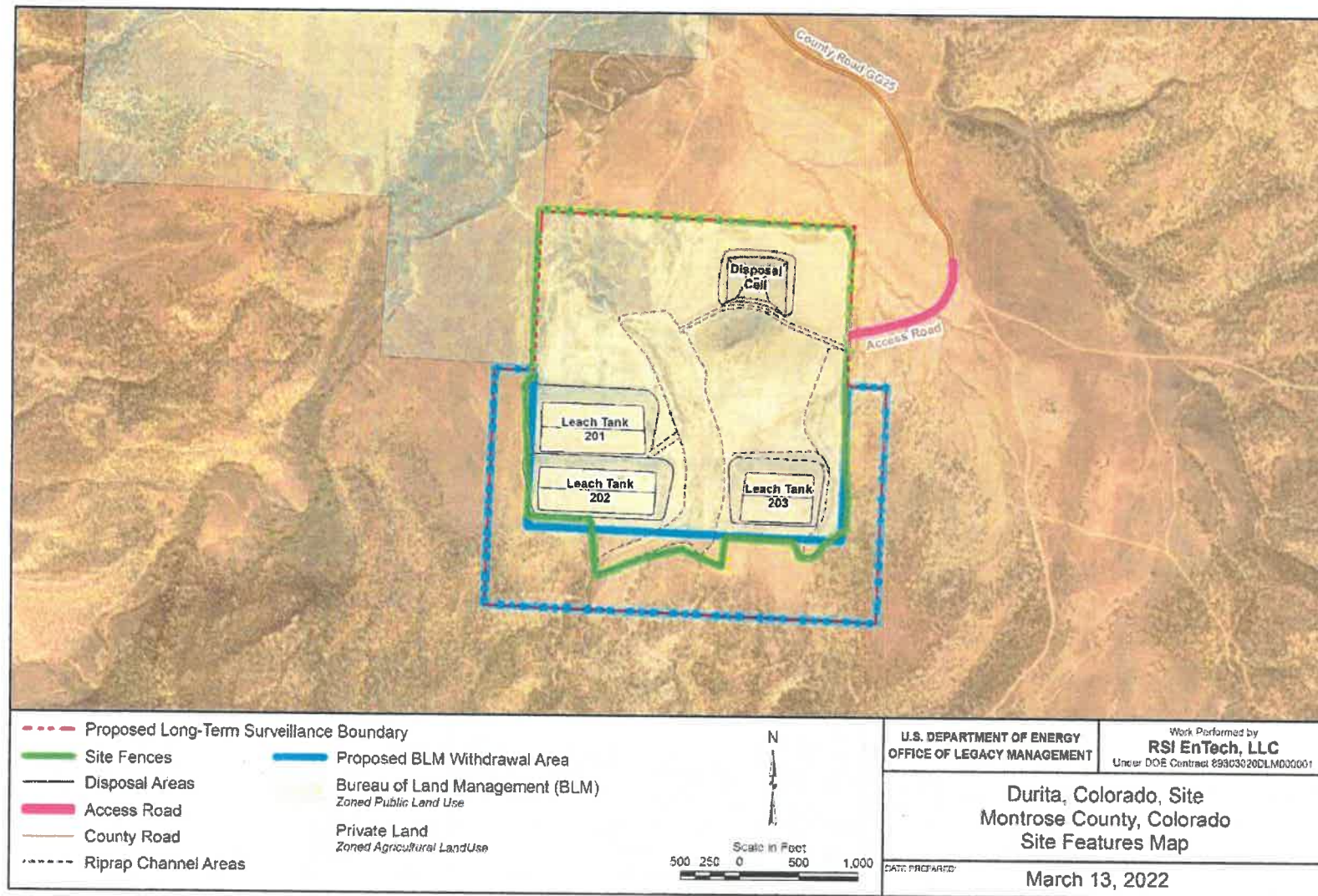


Figure 2. Durita, Colorado, site features.