

NOT TO SCALE

(Rev. 12 1/03)

NOTE: NODES ARE AS SHOWN ON TABLE 12.2-1.



**PERRY NUCLEAR POWER PLANT**

Radiation Source Model

Figure 12.2-1

Removed in Accordance with RIS 2015-17

PERRY NUCLEAR POWER PLANT  
10 CENTER RD., PERRY, OHIO 44081

RADIATION ZONES,  
PLAN A ABOVE ELEVS. 568'-6", 574'-10",  
577'-6" AND 580'-6"  
FIGURE 12.3-1  
(DWG. E-013-0003-00000)

Removed in Accordance with RIS 2015–17

PERRY NUCLEAR POWER PLANT  
10 CENTER RD., PERRY, OHIO 44081  
RADIATION ZONES, PLAN B ABOVE  
ELEVS. 593'-6", 599'-0", 600'-6",  
602'-6", AND 605'-6"  
FIGURE 12.3-2  
(DWG. E-013-0004-00000)

Removed in Accordance with RIS 2015–17

PERRY NUCLEAR POWER PLANT  
10 CENTER RD., PERRY, OHIO 44081

RADIATION ZONES, PLAN C ABOVE  
ELEVS. 620'-6", 623'-6" AND  
624'-6"

FIGURE 12.3-3  
(DWG. E-013-0005-00000)

Removed in Accordance with RIS 2015-17

PERRY NUCLEAR POWER PLANT  
10 CENTER RD., PERRY, OHIO 44081

RADIATION ZONES, PLAN D  
ABOVE ELEVS. 638'-6", 642'-0"  
AND 647'-6"  
FIGURE 12.3-4  
(DWG. E-013-0006-00000)

Removed in Accordance with RIS 2015–17

PERRY NUCLEAR POWER PLANT  
10 CENTER RD., PERRY, OHIO 44081

RADIATION ZONES, PLAN E ABOVE  
ELEVS. 652'-0" AND EL. 654'-6",

FIGURE 12.3-5  
(DWG. E-013-0007-00000)

Removed in Accordance with RIS 2015-17

PERRY NUCLEAR POWER PLANT  
10 CENTER RD., PERRY, OHIO 44081

RADIATION ZONES, PLAN F ABOVE  
ELEVS. 664'-7", 665'-0", AND  
670'-6"

FIGURE 12.3-6  
(DWG. E-013-0008-00000)

Removed in Accordance with RIS 2015-17

PERRY NUCLEAR POWER PLANT  
10 CENTER RD., PERRY, OHIO 44081

RADIATION ZONE, PLAN G ABOVE  
ELEVS. 689'-6"

FIGURE 12.3-7  
(DWG. E-013-0009-00000)



Removed in Accordance with RIS 2015–17

PERRY NUCLEAR POWER PLANT  
10 CENTER RD., PERRY, OHIO 44081

RADIATION ZONE,  
PLAN H ROOF PLAN

FIGURE 12.3-8  
(DWG. E-013-0010-00000)

Removed in Accordance with RIS 2015–17

PERRY NUCLEAR POWER PLANT  
10 CENTER RD., PERRY, OHIO 44081

RADIATION ZONE,  
SECTION A-A

FIGURE 12.3-9  
(DWG. E-013-0011-00000)

Removed in Accordance with RIS 2015-17

PERRY NUCLEAR POWER PLANT  
10 CENTER RD., PERRY, OHIO 44081

RADIATION ZONE,  
SECTION B-B

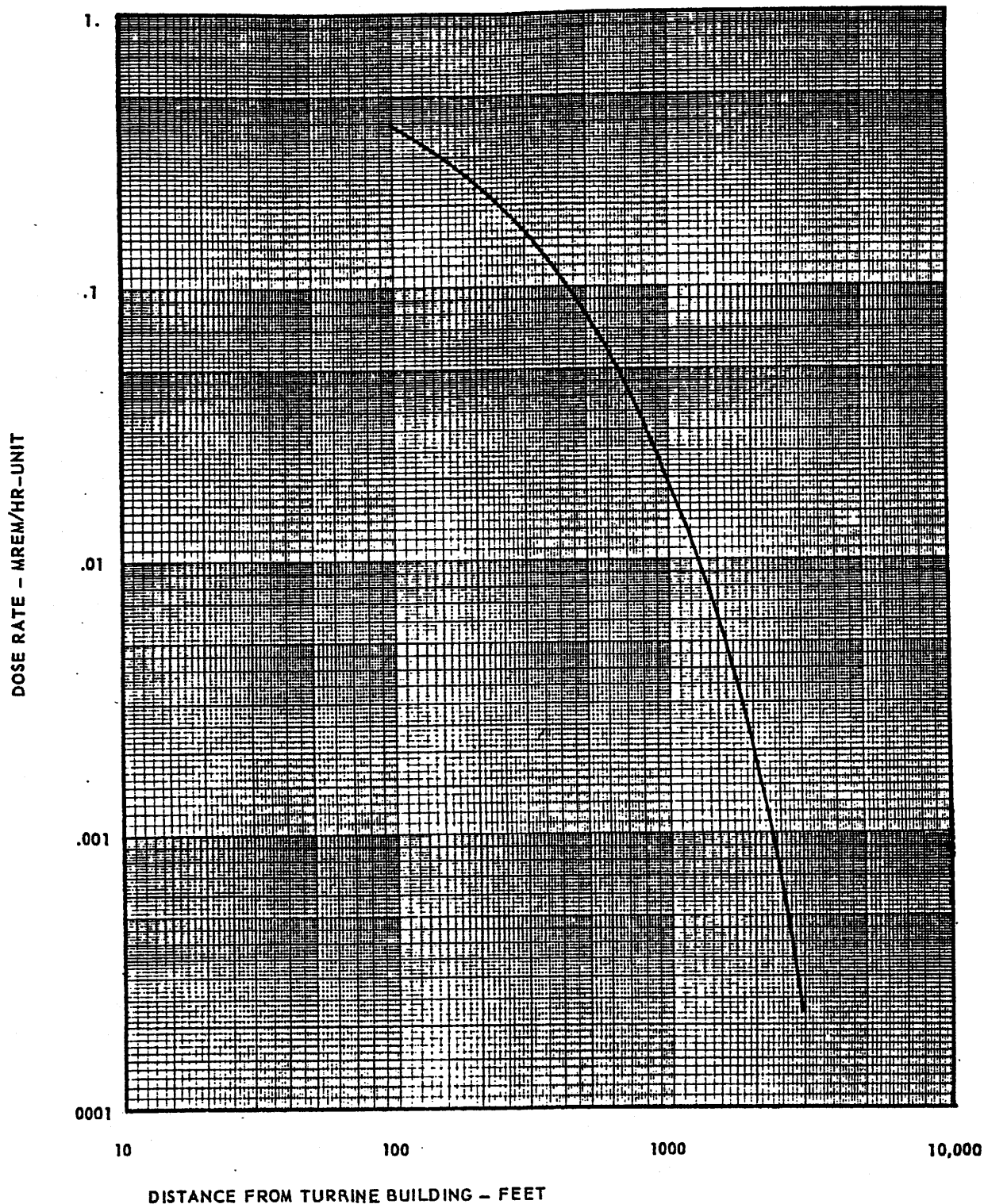
FIGURE 12.3-10  
(DWG. E-013-0012-00000)

Removed in Accordance with RIS 2015-17

PERRY NUCLEAR POWER PLANT  
10 CENTER RD., PERRY, OHIO 44081

RADIATION ZONE,  
SECTION C-C

FIGURE 12.3-11  
(DWG. E-013-0013-000000)



(Rev. 12 1/03)

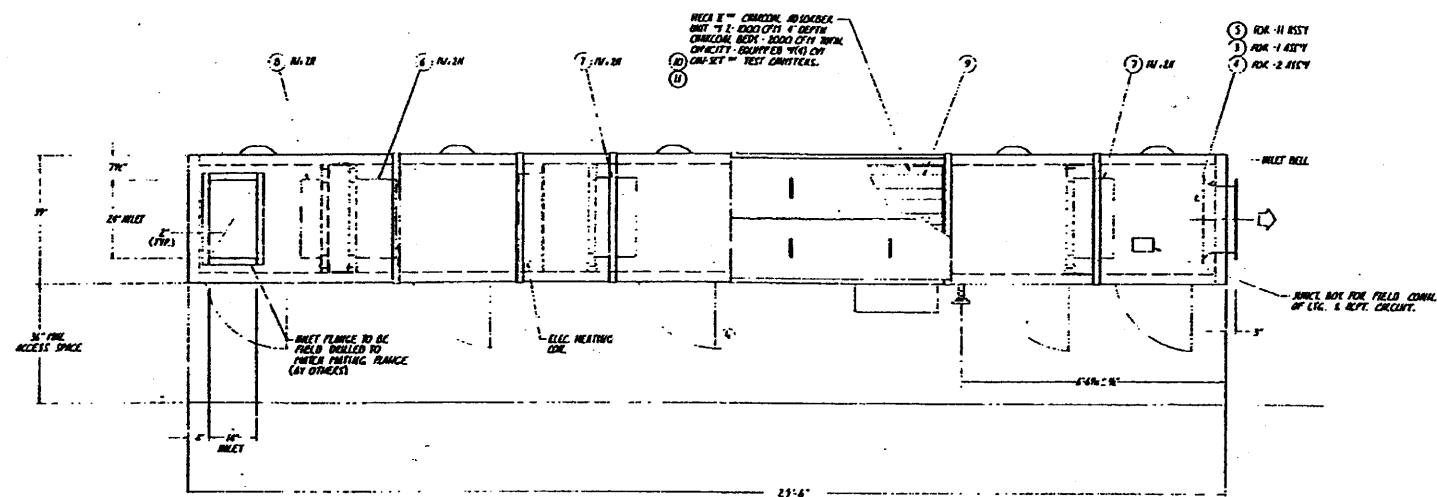


## PERRY NUCLEAR POWER PLANT

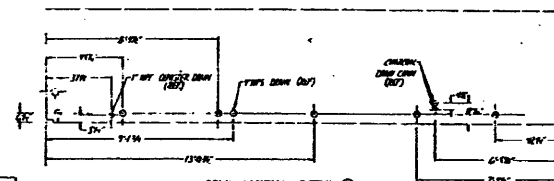
Skyshine Dose Rate (mrem/hr)  
vs. Distance (ft.)

Figure 12.3-12

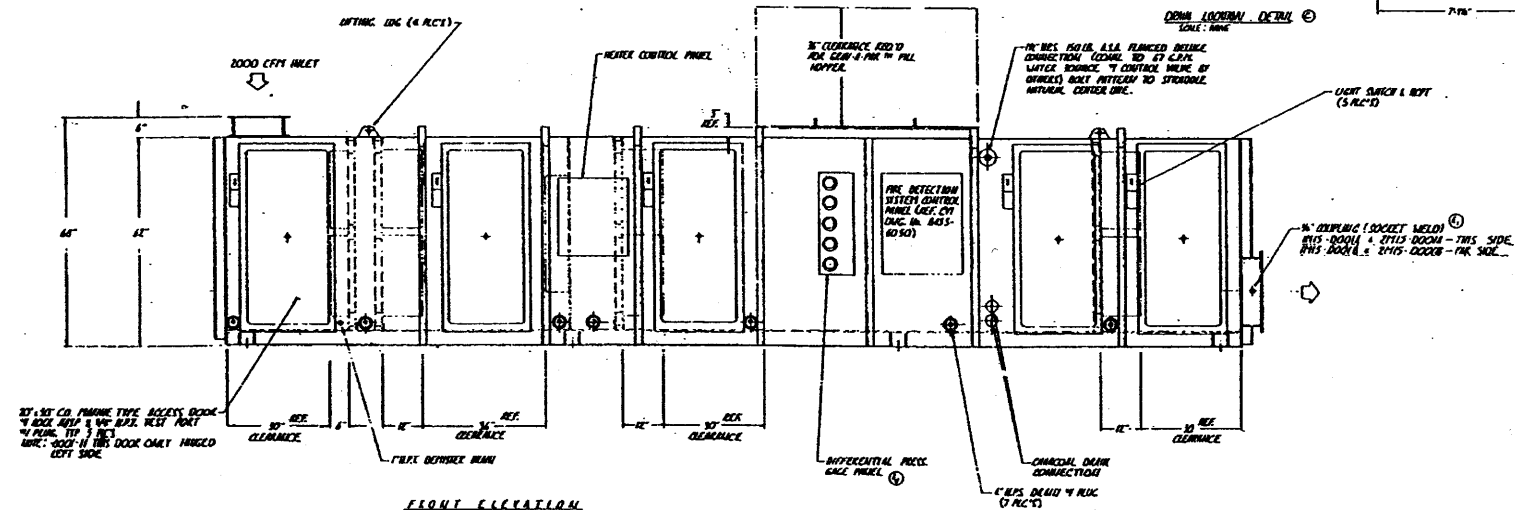
REV	DATE	BY	CHKD	DESCRIPTION
1	10/1/71	JEP	KCP	1. GOOD ASK (UNLESS 2. RE-OUTLET FOR UNIT 7-10)
2	10/1/71	JEP	KCP	3. GOOD ASK (UNLESS 4. RE-OUTLET FOR UNIT 7-10)
3	10/1/71	JEP	KCP	5. RE-OUTLET FOR UNIT 7-10 (UNLESS 6. RE-OUTLET FOR UNIT 7-10)
4	10/1/71	JEP	KCP	7. RE-OUTLET FOR UNIT 7-10 (UNLESS 8. RE-OUTLET FOR UNIT 7-10)
5	10/1/71	JEP	KCP	9. RE-OUTLET FOR UNIT 7-10 (UNLESS 10. RE-OUTLET FOR UNIT 7-10)
6	10/1/71	JEP	KCP	11. RE-OUTLET FOR UNIT 7-10 (UNLESS 12. RE-OUTLET FOR UNIT 7-10)
7	10/1/71	JEP	KCP	13. RE-OUTLET FOR UNIT 7-10 (UNLESS 14. RE-OUTLET FOR UNIT 7-10)
8	10/1/71	JEP	KCP	15. RE-OUTLET FOR UNIT 7-10 (UNLESS 16. RE-OUTLET FOR UNIT 7-10)
9	10/1/71	JEP	KCP	17. RE-OUTLET FOR UNIT 7-10 (UNLESS 18. RE-OUTLET FOR UNIT 7-10)
10	10/1/71	JEP	KCP	19. RE-OUTLET FOR UNIT 7-10 (UNLESS 20. RE-OUTLET FOR UNIT 7-10)



PLAN



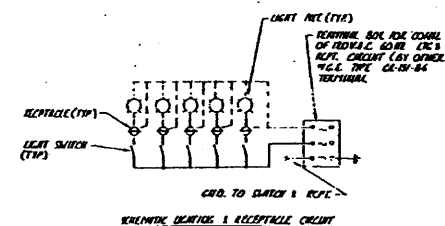
DOWN LOOKING DETAIL



FRONT ELEVATION

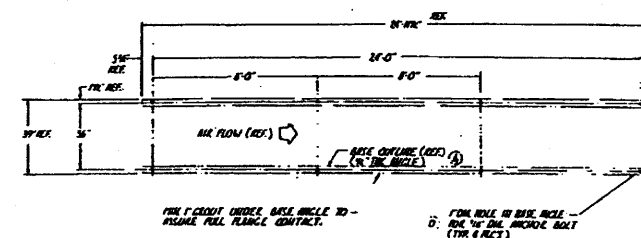
- GENERAL NOTES
1. GOOD ASK (UNLESS 2. RE-OUTLET FOR UNIT 7-10)
  2. GOOD ASK (UNLESS 3. RE-OUTLET FOR UNIT 7-10)
  3. GOOD ASK (UNLESS 4. RE-OUTLET FOR UNIT 7-10)
  4. GOOD ASK (UNLESS 5. RE-OUTLET FOR UNIT 7-10)
  5. GOOD ASK (UNLESS 6. RE-OUTLET FOR UNIT 7-10)
  6. GOOD ASK (UNLESS 7. RE-OUTLET FOR UNIT 7-10)
  7. GOOD ASK (UNLESS 8. RE-OUTLET FOR UNIT 7-10)
  8. GOOD ASK (UNLESS 9. RE-OUTLET FOR UNIT 7-10)
  9. GOOD ASK (UNLESS 10. RE-OUTLET FOR UNIT 7-10)
  10. GOOD ASK (UNLESS 11. RE-OUTLET FOR UNIT 7-10)
  11. GOOD ASK (UNLESS 12. RE-OUTLET FOR UNIT 7-10)
  12. GOOD ASK (UNLESS 13. RE-OUTLET FOR UNIT 7-10)
  13. GOOD ASK (UNLESS 14. RE-OUTLET FOR UNIT 7-10)
  14. GOOD ASK (UNLESS 15. RE-OUTLET FOR UNIT 7-10)
  15. GOOD ASK (UNLESS 16. RE-OUTLET FOR UNIT 7-10)
  16. GOOD ASK (UNLESS 17. RE-OUTLET FOR UNIT 7-10)
  17. GOOD ASK (UNLESS 18. RE-OUTLET FOR UNIT 7-10)
  18. GOOD ASK (UNLESS 19. RE-OUTLET FOR UNIT 7-10)
  19. GOOD ASK (UNLESS 20. RE-OUTLET FOR UNIT 7-10)

GENERAL NOTES

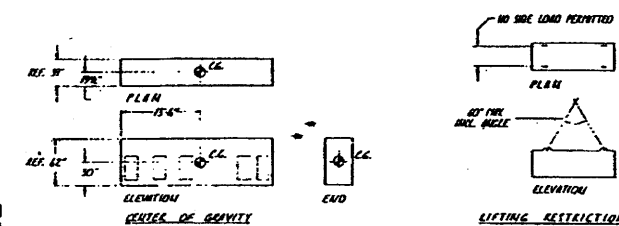


DOWN LOOKING DETAIL

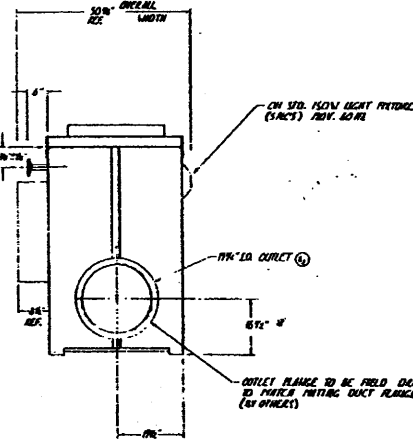
REV	DATE	BY	CHKD	DESCRIPTION
1	10/1/71	JEP	KCP	1. GOOD ASK (UNLESS 2. RE-OUTLET FOR UNIT 7-10)
2	10/1/71	JEP	KCP	3. GOOD ASK (UNLESS 4. RE-OUTLET FOR UNIT 7-10)
3	10/1/71	JEP	KCP	5. RE-OUTLET FOR UNIT 7-10 (UNLESS 6. RE-OUTLET FOR UNIT 7-10)
4	10/1/71	JEP	KCP	7. RE-OUTLET FOR UNIT 7-10 (UNLESS 8. RE-OUTLET FOR UNIT 7-10)
5	10/1/71	JEP	KCP	9. RE-OUTLET FOR UNIT 7-10 (UNLESS 10. RE-OUTLET FOR UNIT 7-10)
6	10/1/71	JEP	KCP	11. RE-OUTLET FOR UNIT 7-10 (UNLESS 12. RE-OUTLET FOR UNIT 7-10)
7	10/1/71	JEP	KCP	13. RE-OUTLET FOR UNIT 7-10 (UNLESS 14. RE-OUTLET FOR UNIT 7-10)
8	10/1/71	JEP	KCP	15. RE-OUTLET FOR UNIT 7-10 (UNLESS 16. RE-OUTLET FOR UNIT 7-10)
9	10/1/71	JEP	KCP	17. RE-OUTLET FOR UNIT 7-10 (UNLESS 18. RE-OUTLET FOR UNIT 7-10)
10	10/1/71	JEP	KCP	19. RE-OUTLET FOR UNIT 7-10 (UNLESS 20. RE-OUTLET FOR UNIT 7-10)



SIDE ELEVATION



DOWN LOOKING DETAIL



END VIEW

(Rev. 12 1/03)

## PERRY NUCLEAR POWER PLANT

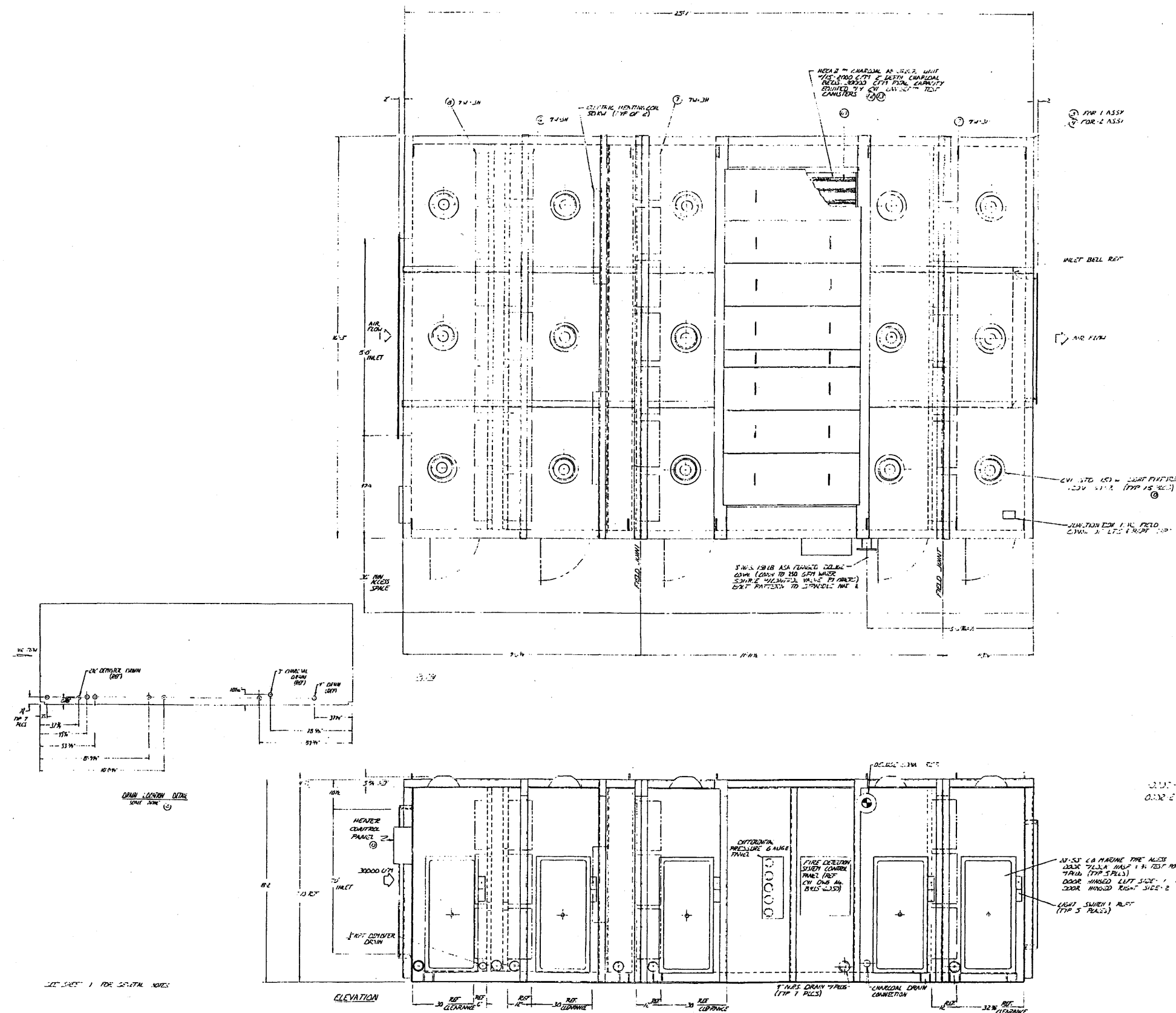
### General Arrangement - Annulus Exhaust Unit

Figure 12.3-13



REVISIONS					
CHK	DATE	BY	APP	REV	DESCRIPTION
R	12/12/12	EP	REV	1	REVISED TO 12/12/12
C	12/12/12	EP	REV	2	ADDED NEW 12/12/12
D	12/12/12	EP	REV	3	ADDED NEW 12/12/12

BILL OF MATERIAL			
ITEM	PART NUMBER	DESCRIPTION	MATERIAL



(Rev. 12 1/03)

**PERRY NUCLEAR POWER PLANT**

General Arrangement - Control Room  
Emergency Recirculation Plenum

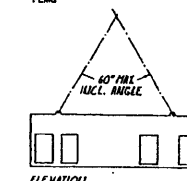
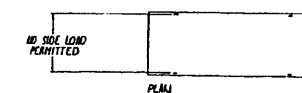
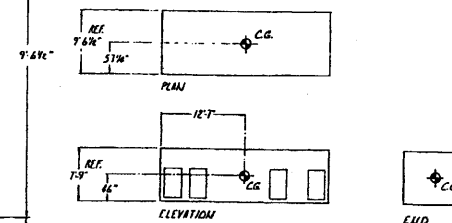
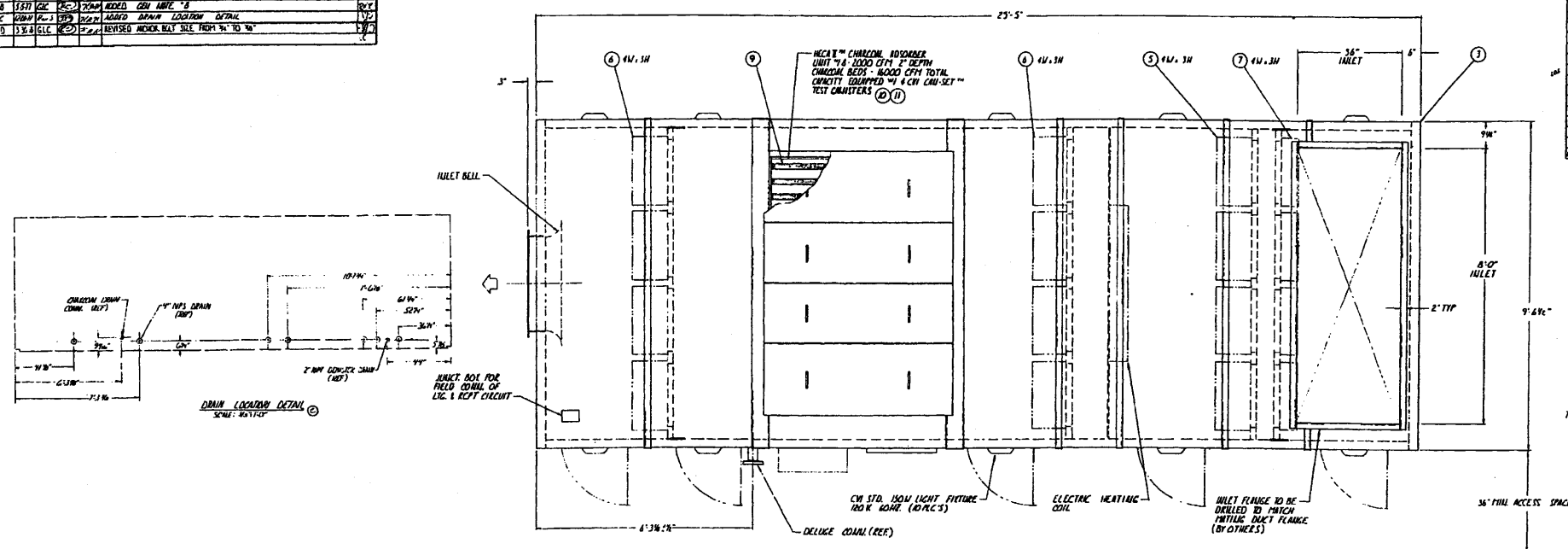
Figure 12.3-14 (Sheet 2 of 2)



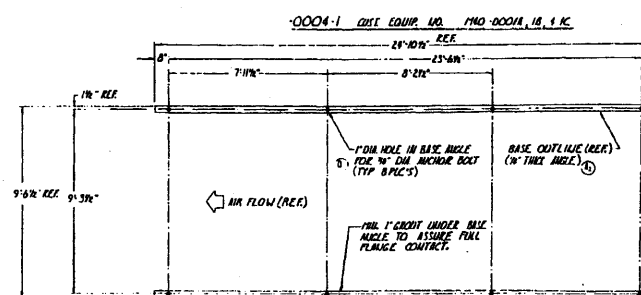
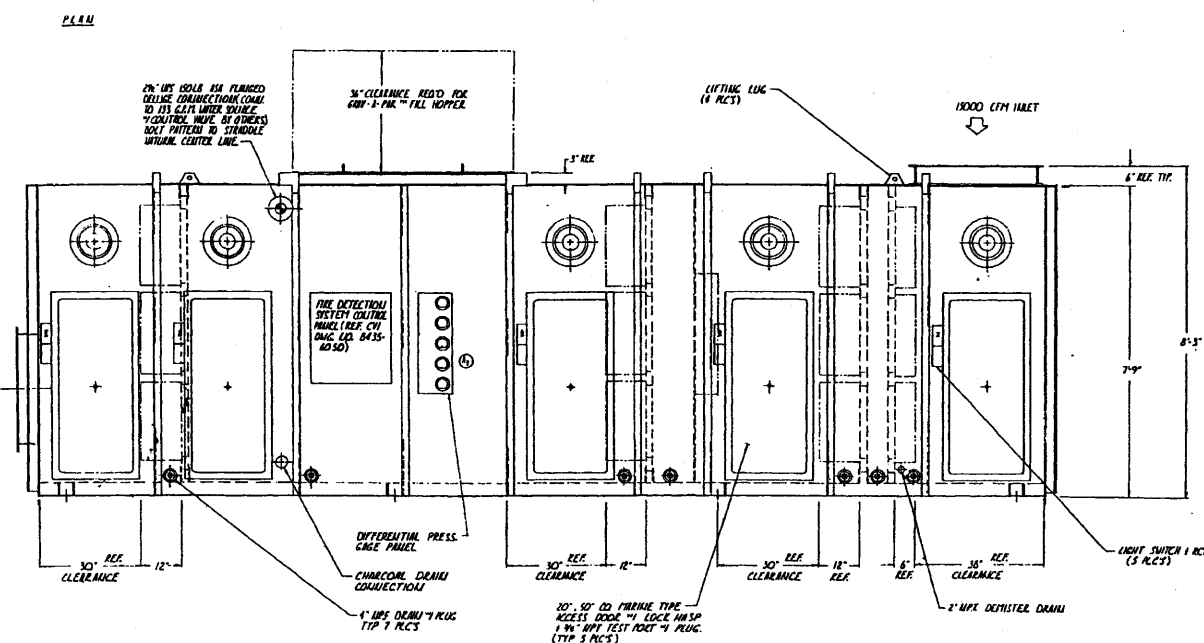
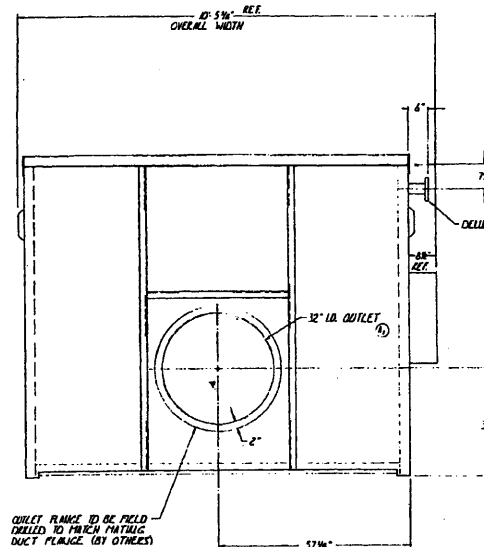
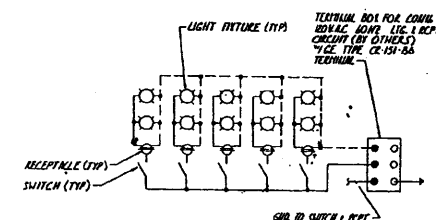


REVISIONS					DESCRIPTION	DATE
QTY	DATE	BY	CHKD	APPR.		
1	1/17/92	WJ	WJ	WJ	1 KEY OUTLET W/ 3/16" HIGH X 1/8" DEEP HOLE THICKNESS	1/17/92
					1 KEY GAGE HOLE	
8	5/31/92	WJ	WJ	WJ	8 HOLES 5/16" DIA X 1/8"	5/31/92
2	5/31/92	WJ	WJ	WJ	2 HOLES 5/16" DIA X 1/8"	5/31/92
9	5/31/92	WJ	WJ	WJ	REVISED HOLE DIA 5/16" DIA X 1/8" DIA	5/31/92

AQ. 4020		48		BILL OF MATERIAL		
1	2	3	4	5	6	7
ITEM	PART NUMBER	QTY	DESCRIPTION		MATERIAL	
1	2435-2024-1	E	FUEL HANDLING AREA ERM. REPAIR			
12	21-2024-00175		FEE-FILTER			
24	21-2024-00175		HEMT-FILTER			
16	70-0080-00048		DEP-MISTER			
9	91-0071-00015		CHARGE			
10	90-2300-01280		CHARGE CHARGER ASST			
6	90-2300-01285		BLANKING COVER			

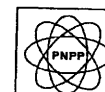


### LIFTING RESTRICTIONS



6. ANNUAL NET MATERIAL SHALL BE WITHIN 4-507 TO BE FURNISHED BY OTHERS
7. HOUSING TO BE PRINTED PER CYI SPEC. WA. 8145-23-1035 (EXCEPTION TO BE PERMITE COATED ONLY - FINISH FINISH BY OTHERS)
8. ITEM NO. 3, 6, 7, 9, 10, 11 TO BE SHIPPED SEPARATE FROM UNIT.
9. TOTAL OPERATING WTS 20000 LB. (EST) SHIPPING WTS 22000 LB. (EST)
10. SEE CYI 0117 MANUAL FOR INSTALLATION OF FILTERS & COMPONENTS.
11. HOUSING DESIGN PRESSURE -1PSIG TO +17PSIG
12. DESIGN AIR FLOW 5000 CFM
13. CUSTOMER TO MAKE FINAL INSPECTION TO THIS DRAWING.

(Rev. 12 1/03)



## PERRY NUCLEAR POWER PLANT

General Arrangement - Fuel  
Handling Area Exhaust Plenum

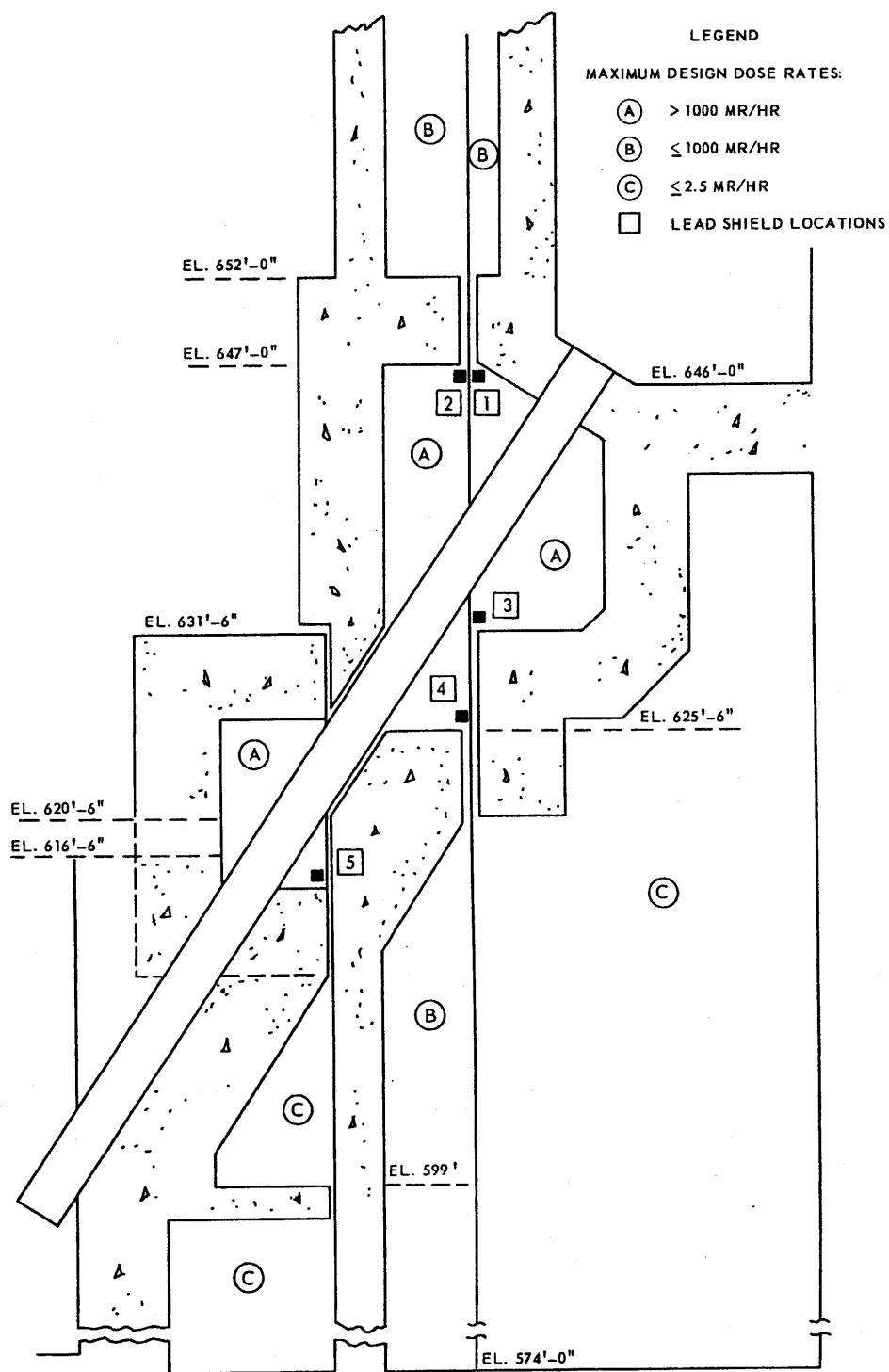
Figure 12.3-16











(Rev. 12 1/03)



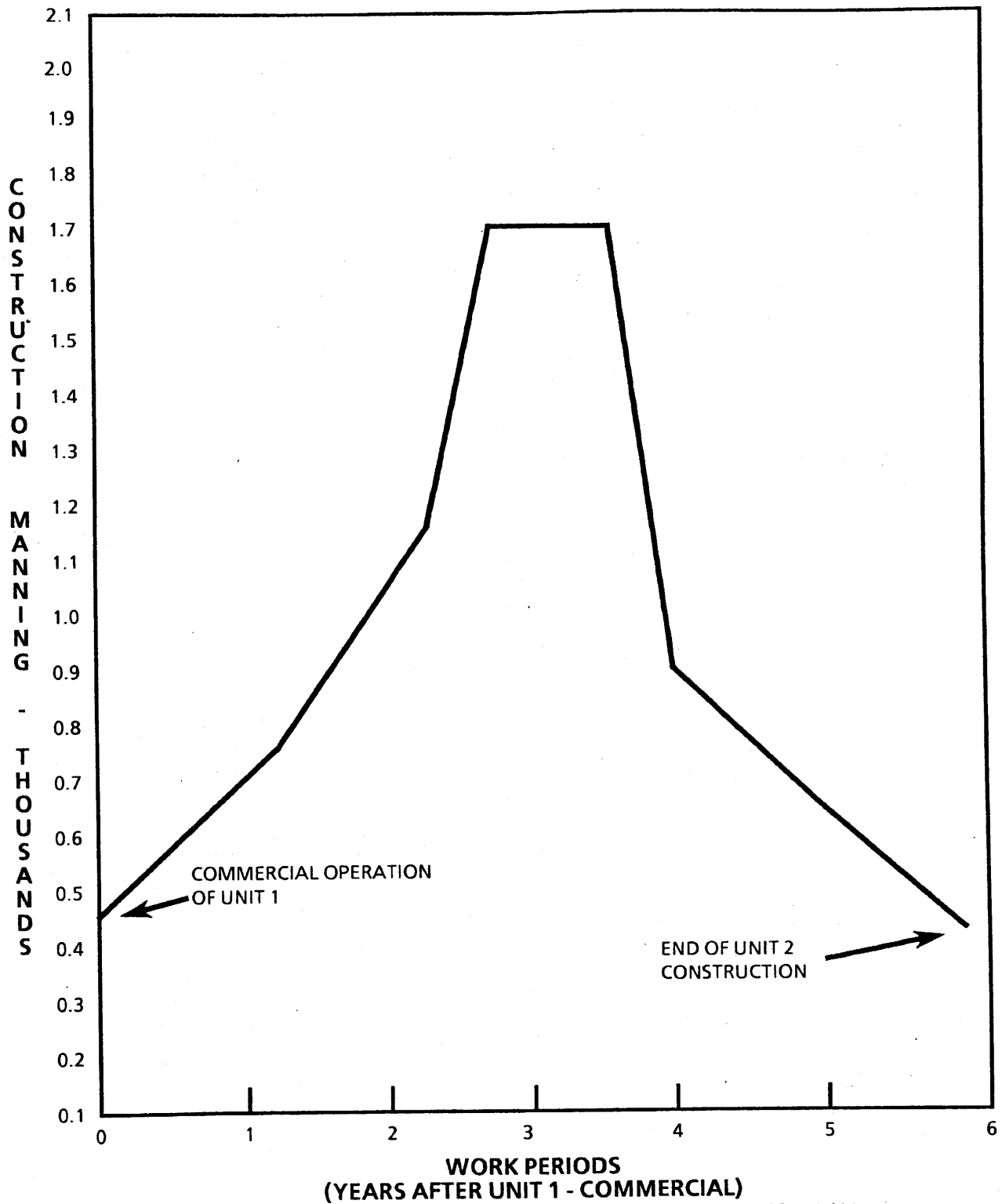
**PERRY NUCLEAR POWER PLANT**

Inclined Fuel Transfer  
Tube Radiation Shielding

Figure 12.3-21







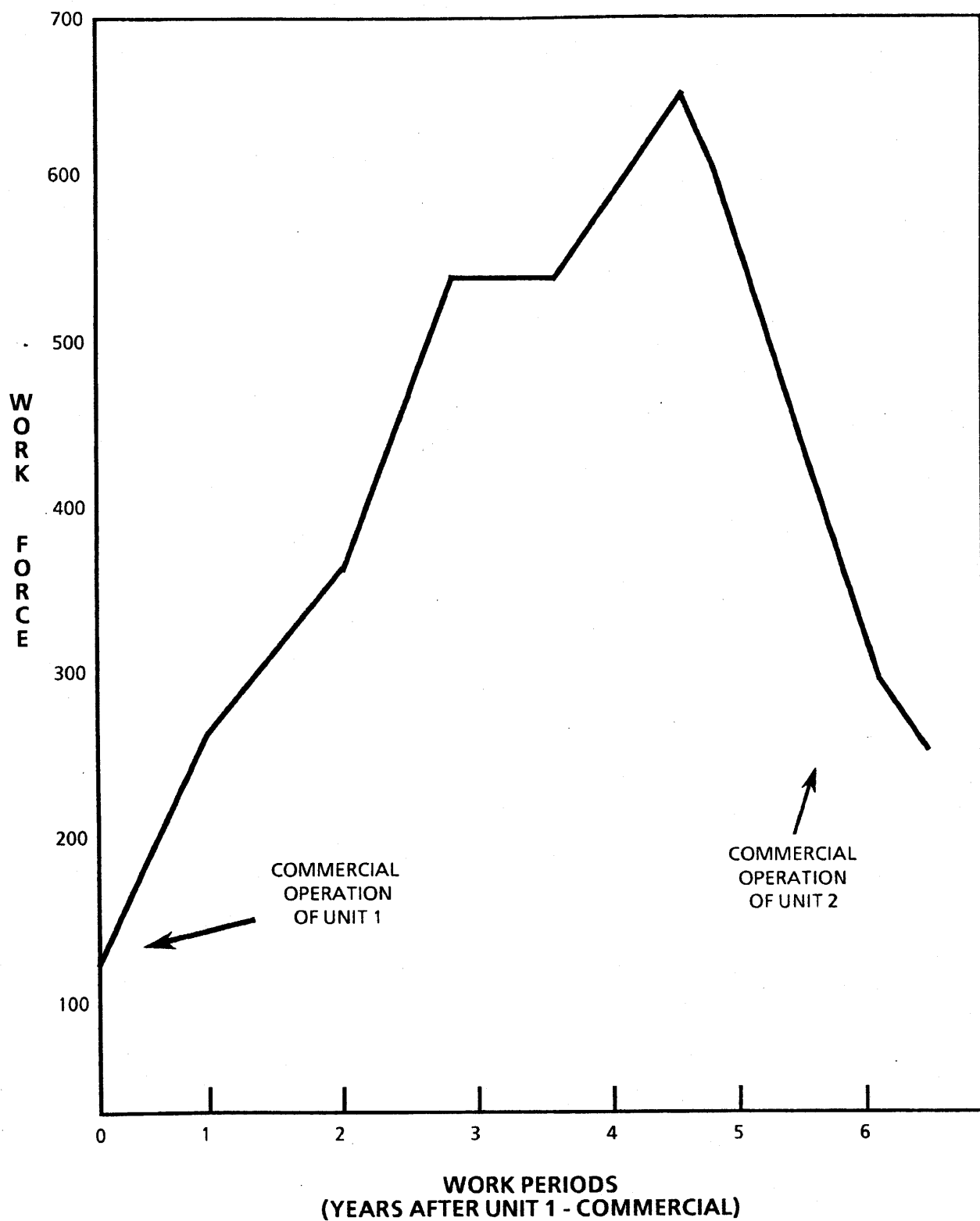
(Rev. 12 1/03)



**PERRY NUCLEAR POWER PLANT**

Engineering and Construction  
Schedule

Figure 12.4-1



(Rev. 12 1/03)



## PERRY NUCLEAR POWER PLANT

Site Organization Manning  
(Without Perry Plant Department)

Figure 12.4-2

Removed in Accordance with RIS 2015-17

PERRY NUCLEAR POWER PLANT  
10 CENTER RD., PERRY, OHIO 44081

POST-ACCIDENT RADIATION ZONES,  
PLAN A ABOVE ELEVS. 568'-6", 574'-10",  
577'-6" AND 580'-6", PLANT COMPLEX  
FIGURE 12.6-1  
(DWG. E-013-0003-00000)

Removed in Accordance with RIS 2015-17

PERRY NUCLEAR POWER PLANT  
10 CENTER RD., PERRY, OHIO 44081

POST-ACCIDENT RADIATION ZONES,  
PLAN B ABOVE ELEV. 593'-6",  
599'-0", 600'-6", 602'-6", AND 605'-6",  
PLANT COMPLEX  
FIGURE 12.6-2  
(DWG. E-013-0004-00000)

Removed in Accordance with RIS 2015-17

PERRY NUCLEAR POWER PLANT  
10 CENTER RD., PERRY, OHIO 44081

POST-ACCIDENT RADIATION ZONES,  
PLAN C ABOVE ELEVS. 620'-6",  
623'-6" AND 624'-6", PLANT COMPLEX  
FIGURE 12.6-3  
(DWG. E-013-0005-00000)

Removed in Accordance with RIS 2015-17

PERRY NUCLEAR POWER PLANT  
10 CENTER RD., PERRY, OHIO 44081

POST-ACCIDENT RADIATION ZONES,  
PLAN D ABOVE ELEVS. 638'-6", 642'-0"  
AND 647'-6", PLANT COMPLEX  
FIGURE 12.6-4  
(DWG. E-013-0006-00000)

Removed in Accordance with RIS 2015-17

<p>PERRY NUCLEAR POWER PLANT 10 CENTER RD., PERRY, OHIO 44081</p>
<p>POST-ACCIDENT RADIATION ZONES, PLAN E ABOVE ELEVS. 652'-0" AND EL. 654'-6", PLANT COMPLEX FIGURE 12.6-5 (DWG. E-013-0007-00000)</p>

Removed in Accordance with RIS 2015-17

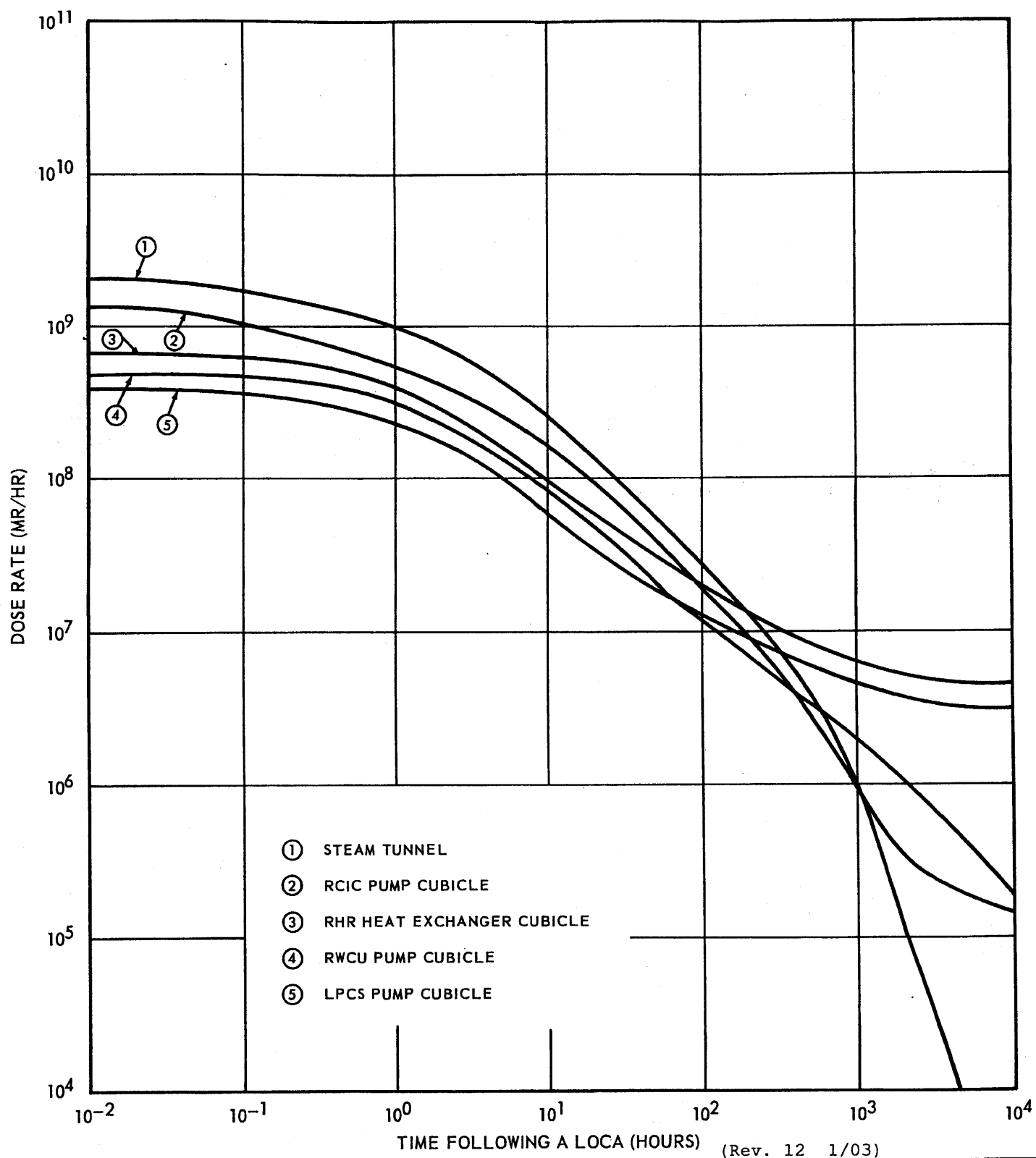
PERRY NUCLEAR POWER PLANT 10 CENTER RD., PERRY, OHIO 44081
POST-ACCIDENT RADIATION ZONES, PLAN F ABOVE ELEVS. 664'-7", 665'-0", AND 670'-6", PLANT COMPLEX FIGURE 12.6-6 (DWG. E-013-0008-00000)



Removed in Accordance with RIS 2015-17

PERRY NUCLEAR POWER PLANT  
10 CENTER RD., PERRY, OHIO 44081

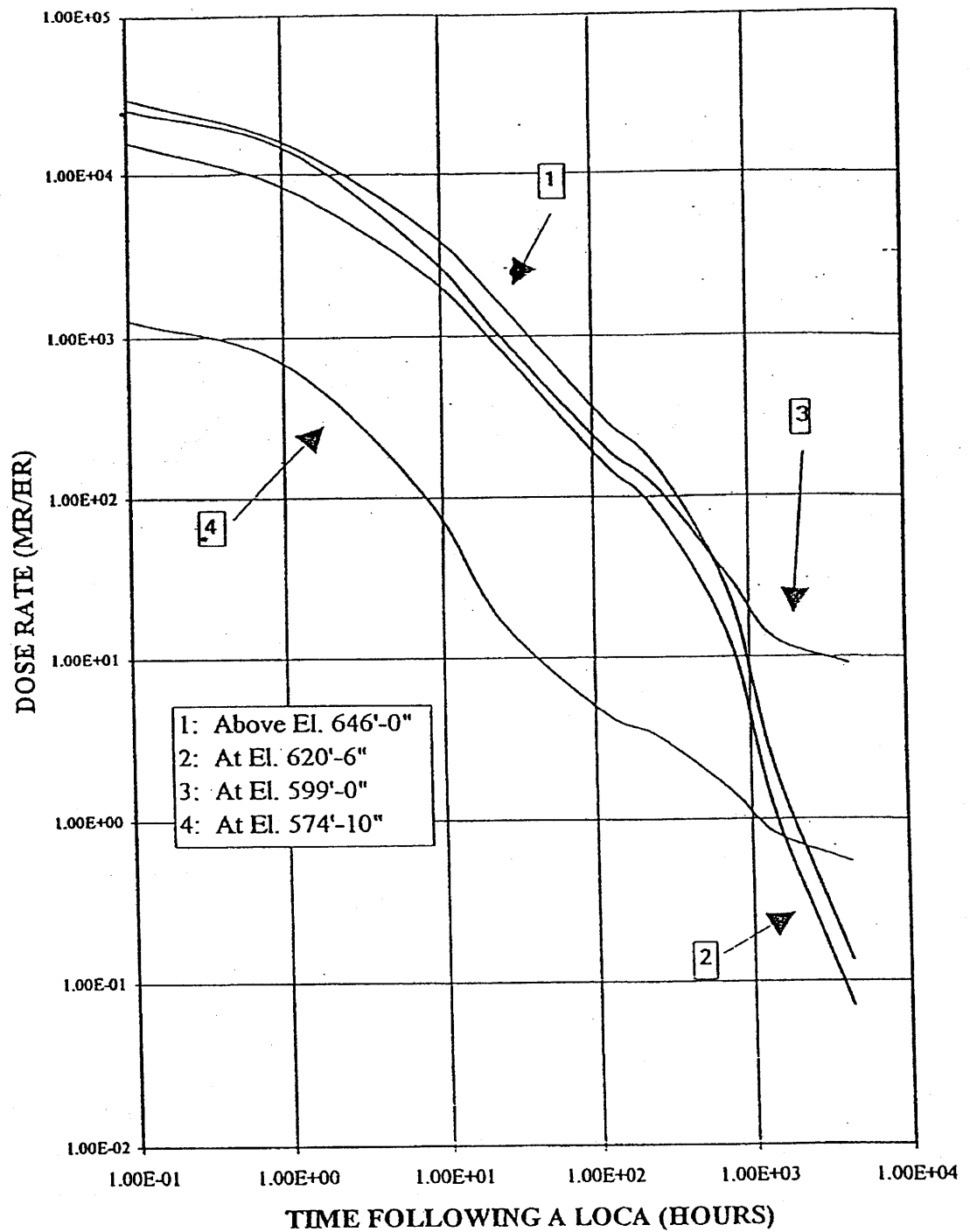
POST-ACCIDENT RADIATION ZONE,  
PLAN G ABOVE ELEVS. 689'-6",  
PLANT COMPLEX  
FIGURE 12.6-7  
(DWG. E-013-0009-00000)



# PERRY NUCLEAR POWER PLANT

Auxiliary Building Dose Rates  
 Versus Time Following a LOCA

Figure 12.6-8



(Rev. 13 12/03)



**PERRY NUCLEAR POWER PLANT**

Intermediate Building Dose  
 Rates Versus Time Following a LOCA

Figure 12.6-9