



W01 LOCAL PANEL AND RACK SYSTEM (W00-02)

- W01P002 PERMANENT POTABLE WATER CONTROL PANEL
- W01P005 MAIN CONDENSER CLEAN CONTROL PANEL
- W01P006 SERVICE WATER SCREEN CONTROL PANEL
- W01P007 AUXILIARY CONDENSER CLEAN CONTROL PANEL
- W01P009 TURBINE PLANT SAMPLING ANALYZER PANEL
- W01P010 EMERGENCY SERVICE WATER SCREEN CONTROL PANEL - A
- W01P010A EMERGENCY SERVICE WATER SCREEN CONTROL PANEL - B
- W01P012A INSTRUMENT CABINET - MOVABLE
- W01P012B INSTRUMENT CABINET - IMMOVABLE
- W01P012C INSTRUMENT CABINET - IMMOVABLE
- W01P013 CONDENSATE DENIMERALIZER CONTROL PANEL
- W01P014 CONDENSATE FILTER CONTROL PANEL
- W01P015 CONDENSATE FILTER CONTROL PANEL
- W01P016 MAKEUP WATER PRETREATMENT CONTROL PANEL
- W01P017 MAKEUP WATER DENIMERALIZER CONTROL PANEL
- W01P022A H<sub>2</sub> ANALYZER A VERTICAL PANEL
- W01P022B H<sub>2</sub> ANALYZER B VERTICAL PANEL
- W01P027 SERVICE WATER CHLORINATION PANEL
- W01P028 EMERGENCY SERVICE WATER CHLORINATION PANEL
- W01P031A RADWASTE CONTROL PANEL
- W01P031B RADWASTE CONTROL PANEL
- W01P032 BULK HYDROGEN STORAGE GARGE PANEL
- W01P033 H<sub>2</sub> SYSTEM HVAC PANEL
- W01P034 SODIUM HYPOCHLORITE GENERATION CONTROL PANEL
- W01P035 DECOLORINATION-CONTROL PANEL
- W01P037 PUMP ROOM COOLING HVAC CONTROL PANEL
- W01P038 EC COOLING SYSTEM AND ES H2O SYSTEM INSTRUMENT RACK
- W01P040 H2O SYSTEM HVAC PANEL
- W01P041 H2O SYSTEM HVAC PANEL
- W01P042 TURBINE BUILDING CHILLED WATER CONTROL PANEL
- W01P049 H2O SYSTEM VENTILATION FAN SC
- W01P051 SERVICE AIR COMPRESSOR CONTROL PANEL
- W01P052 COOLING TOWER CHLORINATION CONTROL PANEL
- W01P053 COOLING TOWER RESIDUAL CHLORINE ANALYZER PANEL
- W01P054 STANDBY DIESEL - ENGINE CONTROL PANEL
- W01P054B STANDBY DIESEL - ENGINE CONTROL PANEL
- W01P055A STANDBY DIESEL - GENERATOR CONTROL PANEL
- W01P055B STANDBY DIESEL - GENERATOR CONTROL PANEL
- W01P057 INSTRUMENT AIR COMPRESSOR CONTROL PANEL
- W01P061 STEAM SEAL EVAPORATION CONTROL PANEL
- W01P062 STEAM SEAL CONTROL PANEL
- W01P063 COOLING TOWER ACID ADDITION CONTROL PANEL
- W01P064 RADWASTE BUILDING VENTILATION EXHAUST RADIATION MONITOR
- W01P065 INTERMEDIATE BUILDING VENTILATION EXHAUST RADIATION MONITOR
- W01P066 FUEL HANDLING BUILDING VENTILATION EXHAUST RADIATION MONITOR
- W01P068 CONTROL ROOM AIRBORNE RADIATION MONITOR
- W01P070 CONTAINMENT EXHAUST RADIATION MONITOR
- W01P071 DRYWELL ATMOSPHERE RADIATION MONITOR
- W01P072 CONTAINMENT ATMOSPHERE RADIATION MONITOR
- W01P073 AMULUS EXHAUST TRIM "A" RADIATION MONITOR
- W01P074 AMULUS EXHAUST TRIM "B" RADIATION MONITOR
- W01P075A INTERBUS TRANSFORMER LM-1-A PROTECTION RELAY PANEL
- W01P075B INTERBUS TRANSFORMER LM-1-A PROTECTION RELAY PANEL
- W01P076C INTERBUS TRANSFORMER LM-1-A PROTECTION RELAY PANEL
- W01P077A EMERGENCY SERVICE WATER SCREEN CONTROL STATION A AND B
- W01P077B EMERGENCY SERVICE WATER SCREEN CONTROL STATION A AND B
- W01P078A SERVICE WATER SCREEN WASH CONTROL STATION A AND B
- W01P078B SERVICE WATER SCREEN WASH CONTROL STATION A AND B
- W01P084A RHM TUBE BUNDLE WATER REMOVAL PUMP
- W01P084B RHM TUBE BUNDLE WATER REMOVAL PUMP
- W01P085 OFF-GAS BUILDING VENTILATION EXHAUST RADIATION MONITOR
- W01P086 UNIT VENT 1 RADIATION MONITOR
- W01P075 AUXILIARY BUILDING VENTILATION EXHAUST RADIATION MONITOR
- W01P144 TERMINATION CABINET
- W01P081 MOISTURE SEPARATOR REHEATER CONTROL PANEL
- W01P082 SOLID RADWASTE DISPOSAL CONTROL PANEL
- W01P084 POST LOCA HYDROGEN RECOMBINER A CONTROL PANEL
- W01P085 POST LOCA HYDROGEN RECOMBINER B CONTROL PANEL
- W01P086 INSTRUMENT AIR DRYER A CONTROL PANEL
- W01P087 INSTRUMENT AIR DRYER B CONTROL PANEL
- W01P088 FEEDWATER AND REHEAT STEAM SYSTEM INSTRUMENT RACK
- W01P090 AUXILIARY MILLER CHEMICAL TREATING CONTROL PANEL
- W01P091 DIESEL FINE PUMP CONTROL PANEL
- W01P102 ELECTRIC FINE PUMP CONTROL PANEL
- W01P132 OFF-GAS VAULT SYSTEM REFRIGERATION PANEL
- W01P133A TRAVELING BELT FILTER CONTROL PANEL
- W01P133B TRAVELING BELT FILTER CONTROL PANEL
- W01P133C TRAVELING BELT FILTER CONTROL PANEL
- W01P134A CONTAINMENT ATMOSPHERE MONITOR INSTRUMENT PANEL A
- W01P134B CONTAINMENT ATMOSPHERE MONITOR INSTRUMENT PANEL B
- W01P148 OFF-GAS VENT PIPE AIR SAMPLING PANEL
- W01P149 PLANT VENT AIR SAMPLING RACK
- W01P189 OFF-GAS VENT PIPE RADIATION MONITOR
- W01P170 MAINTENANCE CALIBRATION PATCH PANEL
- W01P172 AUXILIARY BUILDING AND STEAM TUNNEL HVAC CONTROL PANEL
- W01P173 FUEL POOL FILTER DENIMERALIZER CONTROL PANEL
- W01P175A CONDENSATE FILTER UNIT A INSTRUMENT RACK
- W01P175B CONDENSATE FILTER UNIT B INSTRUMENT RACK
- W01P175C CONDENSATE FILTER UNIT C INSTRUMENT RACK
- W01P175D CONDENSATE FILTER UNIT D INSTRUMENT RACK
- W01P175E CONDENSATE FILTER UNIT E INSTRUMENT RACK
- W01P175F CONDENSATE FILTER UNIT F INSTRUMENT RACK
- W01P175G CONDENSATE FILTER UNIT G INSTRUMENT RACK
- W01P175H CONDENSATE FILTER UNIT H INSTRUMENT RACK
- W01P175I CONDENSATE FILTER PRECOAT TANK INSTRUMENT RACK
- W01P176 H<sub>2</sub> AND COOLING WATER CONTROL PANEL
- W01P177A H2/H2O SYSTEM HVAC PANEL A
- W01P177B H2/H2O SYSTEM HVAC PANEL B
- W01P178 EMERGENCY CLOSED COOLING SYSTEM INSTRUMENT RACK
- W01P179 MOISTURE SEPARATOR DRAIN TANK - B LEVEL INSTRUMENT RACK
- W01P180 MOISTURE SEPARATOR DRAIN TANK - A LEVEL INSTRUMENT RACK
- W01P181 DRAIN TANK - A - LEVEL CONTROL RACK
- W01P182 HOTWELL PUMP PRESSURE TRANSMITTER RACK
- W01P183 TURBINE BUILDING CONDENSATE BOOSTER PUMPS A AND B LEVEL INSTR RACK
- W01P184 MOISTURE SEPARATOR DRAIN TANK - B - LEVEL INSTRUMENT RACK
- W01P185 TURBINE BUILDING CLOSED COOLING PUMP DISCHARGE INSTRUMENT RACK
- W01P186 MAIN STEAM LINES PRESSURE TRANSMITTER RACK
- W01P187 INSTRUMENTATION RACK
- W01P188 INSTRUMENTATION RACK
- W01P189 INSTRUMENTATION RACK
- W01P190 INSTRUMENTATION RACK
- W01P191 INSTRUMENTATION RACK
- W01P192 INSTRUMENTATION RACK
- W01P193 INSTRUMENTATION RACK
- W01P194 INSTRUMENTATION RACK
- W01P195 INSTRUMENTATION RACK
- W01P196 FIRE PUMP CONTROLLER PANEL
- W01P313 TURBINE BUILDING CHILLER CONTROL PANEL A
- W01P314 TURBINE BUILDING CHILLER CONTROL PANEL B
- W01P315 CONTAINMENT CHILLER A CONTROL PANEL
- W01P316 CONTAINMENT CHILLER B CONTROL PANEL
- W01P317 CONTAINMENT CHILLER C CONTROL PANEL
- W01P318 CONTROL COMPLEX CHILLER A CONTROL PANEL
- W01P319 CONTROL COMPLEX CHILLER B CONTROL PANEL
- W01P320 CONTROL COMPLEX CHILLER C CONTROL PANEL
- W01P321 OFF-GAS VAULT BRINE COOLING CONTROL PANEL A1
- W01P322 OFF-GAS VAULT BRINE COOLING CONTROL PANEL A2
- W01P323 OFF-GAS VAULT BRINE COOLING CONTROL PANEL B1
- W01P324 OFF-GAS VAULT BRINE COOLING CONTROL PANEL B2
- W01P325 OFF-GAS VAULT BRINE COOLING CONTROL PANEL C1
- W01P326 OFF-GAS VAULT BRINE COOLING CONTROL PANEL C2
- W01P328 TURBINE PLANT SAMPLE EXTRACTION PUMP CONTROL PANEL
- W01P329 HOT WATER HEATING SYSTEM CONTROL PANEL
- W01P350 MOISTURE SEPARATOR REHEATER A2 INSTRUMENT RACK
- W01P356 TURBINE BUILDING AND HEATER DAY VENT RADIATION MONITOR (D17K356)
- W01P367 TURBINE BUILDING AND HEATER DAY AUTO ISOKINETIC SAMPLE SINK

W01 LOCAL PANEL AND RACK SYSTEM (W00-02) (CONTINUED)

- W01P358 DENIMERALIZER CONTROL PANEL
- W01P359 EMERGENCY CLOSED COOLING WATER TEMPERATURE (MD) STATION
- W01P362 PH SAMPLE - CHEMICAL WASTE TANKS - PANEL
- W01P367 FAN AND HEATER DIVISION 2 CONTROL STATION
- W01P367 A1/A2 KEY CONTROL PANEL
- W01P400 K1/K2 KEY CONTROL PANEL
- W01P401 GAS BOTTLE RACK
- W01P402 ERIS DAC VACUUM
- W01P422 LOCAL ERIS DAC
- W01P423 HESS AND WUP PIPE TEST CABINET
- W01P424 DWP PIPE TEST CABINET
- W01P425 REMOTE SHUTDOWN CSD SPDS ELECTRONIC CABINET
- W01P480A STANDBY DIESEL - SPEED CONTROL PANEL
- W01P480B STANDBY DIESEL - SPEED CONTROL PANEL
- W01P480C ADVR PH PROCESOR CONTROL PANEL
- W01P480D ADVR PH FILTER CONTROL PANEL
- W01P480E ADVR PH FILTER INSTRUMENT RACK
- LS1 CRANES HOISTS ETC
- LS1E001 POLAR CRANE
- LS1E002A TURBINE ROOM CRANE
- LS1E002B TURBINE ROOM CRANE
- LS1E003 FUEL HANDLING AREA CRANE
- LS1E004 EMERGENCY SERVICE WATER PUMP HOUSE CRANE
- LS1E005 CIRCULATING WATER PUMP HOUSE CRANE
- LS1E012 SERVICE WATER PUMP HOUSE CRANE
- W11 CONTAINMENT VESSEL COOLING SYSTEM
- W110001A AIR HANDLING UNIT
- W110001B AIR HANDLING UNIT
- W110001C AIR HANDLING UNIT
- W110001D AIR HANDLING UNIT
- W110001E AIR HANDLING UNIT
- W110001F AIR HANDLING UNIT
- W13 DRYWELL COOLING SYSTEM
- W13E001 SUPPLY PLENUM
- W13E002 SUPPLY PLENUM
- W13E003 SUPPLY PLENUM
- W13E004A SUPPLY FAN
- W13E004B SUPPLY FAN
- W13E004C SUPPLY FAN
- W13E004D SUPPLY FAN
- W13E004E SUPPLY FAN
- W14 CONTAINMENT VESSEL & DRYWELL PURGE SYSTEM
- W140001A PURGE SUPPLY PLENUM
- W140001B PURGE SUPPLY PLENUM
- W140001C C.V. SUPPLY FAN
- W140001D C.V. SUPPLY FAN
- W140002A EXHAUST FAN
- W140002B EXHAUST FAN
- W140001A EXHAUST PLENUM
- W140001B EXHAUST PLENUM
- W140001C EXHAUST PLENUM
- W140001D EXHAUST PLENUM
- W140001E EXHAUST PLENUM
- W140001F EXHAUST PLENUM
- W16 AMULUS EXHAUST GAS TREATMENT SYSTEM
- W16E001A FAN
- W16E001B FAN
- W16E001C PLENUM
- W16E001D PLENUM
- W21 CONTROLLED ADDRESS AND MISC EQUIPMENT AREA HVAC SYSTEM
- W210001A AREA HVAC SUPPLY PLENUM
- W210001B AREA HVAC SUPPLY PLENUM
- W210001C AREA EXHAUST FAN
- W210001D AREA EXHAUST FAN
- W210002A AREA SUPPLY FAN
- W210002B AREA SUPPLY FAN
- W210002C AREA SUPPLY FAN
- W210003A AREA RETURN FAN
- W210003B AREA RETURN FAN
- W210004A EXHAUST PLENUM
- W210004B EXHAUST PLENUM
- W210004C EXHAUST PLENUM
- W22 MCC SNGR AND MISC ELECTRICAL EQUIPMENT AREA HVAC SYSTEM
- W220001A SUPPLY PLENUM
- W220001B SUPPLY PLENUM
- W220001C SUPPLY FAN
- W220001D SUPPLY FAN
- W220001E SUPPLY FAN
- W220001F SUPPLY FAN
- W220001G SUPPLY FAN
- W220001H SUPPLY FAN
- W220001I SUPPLY FAN
- W220001J SUPPLY FAN
- W220001K SUPPLY FAN
- W220001L SUPPLY FAN
- W220001M SUPPLY FAN
- W220001N SUPPLY FAN
- W220001O SUPPLY FAN
- W220001P SUPPLY FAN
- W220001Q SUPPLY FAN
- W220001R SUPPLY FAN
- W220001S SUPPLY FAN
- W220001T SUPPLY FAN
- W220001U SUPPLY FAN
- W220001V SUPPLY FAN
- W220001W SUPPLY FAN
- W220001X SUPPLY FAN
- W220001Y SUPPLY FAN
- W220001Z SUPPLY FAN
- W220002A SUPPLY FAN
- W220002B SUPPLY FAN
- W220002C SUPPLY FAN
- W220002D SUPPLY FAN
- W220002E SUPPLY FAN
- W220002F SUPPLY FAN
- W220002G SUPPLY FAN
- W220002H SUPPLY FAN
- W220002I SUPPLY FAN
- W220002J SUPPLY FAN
- W220002K SUPPLY FAN
- W220002L SUPPLY FAN
- W220002M SUPPLY FAN
- W220002N SUPPLY FAN
- W220002O SUPPLY FAN
- W220002P SUPPLY FAN
- W220002Q SUPPLY FAN
- W220002R SUPPLY FAN
- W220002S SUPPLY FAN
- W220002T SUPPLY FAN
- W220002U SUPPLY FAN
- W220002V SUPPLY FAN
- W220002W SUPPLY FAN
- W220002X SUPPLY FAN
- W220002Y SUPPLY FAN
- W220002Z SUPPLY FAN
- W220003A SUPPLY FAN
- W220003B SUPPLY FAN
- W220003C SUPPLY FAN
- W220003D SUPPLY FAN
- W220003E SUPPLY FAN
- W220003F SUPPLY FAN
- W220003G SUPPLY FAN
- W220003H SUPPLY FAN
- W220003I SUPPLY FAN
- W220003J SUPPLY FAN
- W220003K SUPPLY FAN
- W220003L SUPPLY FAN
- W220003M SUPPLY FAN
- W220003N SUPPLY FAN
- W220003O SUPPLY FAN
- W220003P SUPPLY FAN
- W220003Q SUPPLY FAN
- W220003R SUPPLY FAN
- W220003S SUPPLY FAN
- W220003T SUPPLY FAN
- W220003U SUPPLY FAN
- W220003V SUPPLY FAN
- W220003W SUPPLY FAN
- W220003X SUPPLY FAN
- W220003Y SUPPLY FAN
- W220003Z SUPPLY FAN
- W220004A SUPPLY FAN
- W220004B SUPPLY FAN
- W220004C SUPPLY FAN
- W220004D SUPPLY FAN
- W220004E SUPPLY FAN
- W220004F SUPPLY FAN
- W220004G SUPPLY FAN
- W220004H SUPPLY FAN
- W220004I SUPPLY FAN
- W220004J SUPPLY FAN
- W220004K SUPPLY FAN
- W220004L SUPPLY FAN
- W220004M SUPPLY FAN
- W220004N SUPPLY FAN
- W220004O SUPPLY FAN
- W220004P SUPPLY FAN
- W220004Q SUPPLY FAN
- W220004R SUPPLY FAN
- W220004S SUPPLY FAN
- W220004T SUPPLY FAN
- W220004U SUPPLY FAN
- W220004V SUPPLY FAN
- W220004W SUPPLY FAN
- W220004X SUPPLY FAN
- W220004Y SUPPLY FAN
- W220004Z SUPPLY FAN
- W220005A SUPPLY FAN
- W220005B SUPPLY FAN
- W220005C SUPPLY FAN
- W220005D SUPPLY FAN
- W220005E SUPPLY FAN
- W220005F SUPPLY FAN
- W220005G SUPPLY FAN
- W220005H SUPPLY FAN
- W220005I SUPPLY FAN
- W220005J SUPPLY FAN
- W220005K SUPPLY FAN
- W220005L SUPPLY FAN
- W220005M SUPPLY FAN
- W220005N SUPPLY FAN
- W220005O SUPPLY FAN
- W220005P SUPPLY FAN
- W220005Q SUPPLY FAN
- W220005R SUPPLY FAN
- W220005S SUPPLY FAN
- W220005T SUPPLY FAN
- W220005U SUPPLY FAN
- W220005V SUPPLY FAN
- W220005W SUPPLY FAN
- W220005X SUPPLY FAN
- W220005Y SUPPLY FAN
- W220005Z SUPPLY FAN
- W220006A SUPPLY FAN
- W220006B SUPPLY FAN
- W220006C SUPPLY FAN
- W220006D SUPPLY FAN
- W220006E SUPPLY FAN
- W220006F SUPPLY FAN
- W220006G SUPPLY FAN
- W220006H SUPPLY FAN
- W220006I SUPPLY FAN
- W220006J SUPPLY FAN
- W220006K SUPPLY FAN
- W220006L SUPPLY FAN
- W220006M SUPPLY FAN
- W220006N SUPPLY FAN
- W220006O SUPPLY FAN
- W220006P SUPPLY FAN
- W220006Q SUPPLY FAN
- W220006R SUPPLY FAN
- W220006S SUPPLY FAN
- W220006T SUPPLY FAN
- W220006U SUPPLY FAN
- W220006V SUPPLY FAN
- W220006W SUPPLY FAN
- W220006X SUPPLY FAN
- W220006Y SUPPLY FAN
- W220006Z SUPPLY FAN
- W220007A SUPPLY FAN
- W220007B SUPPLY FAN
- W220007C SUPPLY FAN
- W220007D SUPPLY FAN
- W220007E SUPPLY FAN
- W220007F SUPPLY FAN
- W220007G SUPPLY FAN
- W220007H SUPPLY FAN
- W220007I SUPPLY FAN
- W220007J SUPPLY FAN
- W220007K SUPPLY FAN
- W220007L SUPPLY FAN
- W220007M SUPPLY FAN
- W220007N SUPPLY FAN
- W220007O SUPPLY FAN
- W220007P SUPPLY FAN
- W220007Q SUPPLY FAN
- W220007R SUPPLY FAN
- W220007S SUPPLY FAN
- W220007T SUPPLY FAN
- W220007U SUPPLY FAN
- W220007V SUPPLY FAN
- W220007W SUPPLY FAN
- W220007X SUPPLY FAN
- W220007Y SUPPLY FAN
- W220007Z SUPPLY FAN
- W220008A SUPPLY FAN
- W220008B SUPPLY FAN
- W220008C SUPPLY FAN
- W220008D SUPPLY FAN
- W220008E SUPPLY FAN
- W220008F SUPPLY FAN
- W220008G SUPPLY FAN
- W220008H SUPPLY FAN
- W220008I SUPPLY FAN
- W220008J SUPPLY FAN
- W220008K SUPPLY FAN
- W220008L SUPPLY FAN
- W220008M SUPPLY FAN
- W220008N SUPPLY FAN
- W220008O SUPPLY FAN
- W220008P SUPPLY FAN
- W220008Q SUPPLY FAN
- W220008R SUPPLY FAN
- W220008S SUPPLY FAN
- W220008T SUPPLY FAN
- W220008U SUPPLY FAN
- W220008V SUPPLY FAN
- W220008W SUPPLY FAN
- W220008X SUPPLY FAN
- W220008Y SUPPLY FAN
- W220008Z SUPPLY FAN
- W220009A SUPPLY FAN
- W220009B SUPPLY FAN
- W220009C SUPPLY FAN
- W220009D SUPPLY FAN
- W220009E SUPPLY FAN
- W220009F SUPPLY FAN
- W220009G SUPPLY FAN
- W220009H SUPPLY FAN
- W220009I SUPPLY FAN
- W220009J SUPPLY FAN
- W220009K SUPPLY FAN
- W220009L SUPPLY FAN
- W220009M SUPPLY FAN
- W220009N SUPPLY FAN
- W220009O SUPPLY FAN
- W220009P SUPPLY FAN
- W220009Q SUPPLY FAN
- W220009R SUPPLY FAN
- W220009S SUPPLY FAN
- W220009T SUPPLY FAN
- W220009U SUPPLY FAN
- W220009V SUPPLY FAN
- W220009W SUPPLY FAN
- W220009X SUPPLY FAN
- W220009Y SUPPLY FAN
- W220009Z SUPPLY FAN
- W220010A SUPPLY FAN
- W220010B SUPPLY FAN
- W220010C SUPPLY FAN
- W220010D SUPPLY FAN
- W220010E SUPPLY FAN
- W220010F SUPPLY FAN
- W220010G SUPPLY FAN
- W220010H SUPPLY FAN
- W220010I SUPPLY FAN
- W220010J SUPPLY FAN
- W220010K SUPPLY FAN
- W220010L SUPPLY FAN
- W220010M SUPPLY FAN
- W220010N SUPPLY FAN
- W220010O SUPPLY FAN
- W220010P SUPPLY FAN
- W220010Q SUPPLY FAN
- W220010R SUPPLY FAN
- W220010S SUPPLY FAN
- W220010T SUPPLY FAN
- W220010U SUPPLY FAN
- W220010V SUPPLY FAN
- W220010W SUPPLY FAN
- W220010X SUPPLY FAN
- W220010Y SUPPLY FAN
- W220010Z SUPPLY FAN
- W220011A SUPPLY FAN
- W220011B SUPPLY FAN
- W220011C SUPPLY FAN
- W220011D SUPPLY FAN
- W220011E SUPPLY FAN
- W220011F SUPPLY FAN
- W220011G SUPPLY FAN
- W220011H SUPPLY FAN
- W220011I SUPPLY FAN
- W220011J SUPPLY FAN
- W220011K SUPPLY FAN
- W220011L SUPPLY FAN
- W220011M SUPPLY FAN
- W220011N SUPPLY FAN
- W220011O SUPPLY FAN
- W220011P SUPPLY FAN
- W220011Q SUPPLY FAN
- W220011R SUPPLY FAN
- W220011S SUPPLY FAN
- W220011T SUPPLY FAN
- W220011U SUPPLY FAN
- W220011V SUPPLY FAN
- W220011W SUPPLY FAN
- W220011X SUPPLY FAN
- W220011Y SUPPLY FAN
- W220011Z SUPPLY FAN
- W220012A SUPPLY FAN
- W220012B SUPPLY FAN
- W220012C SUPPLY FAN
- W220012D SUPPLY FAN
- W220012E SUPPLY FAN
- W220012F SUPPLY FAN
- W220012G SUPPLY FAN
- W220012H SUPPLY FAN
- W220012I SUPPLY FAN
- W220012J SUPPLY FAN
- W220012K SUPPLY FAN
- W220012L SUPPLY FAN
- W220012M SUPPLY FAN
- W220012N SUPPLY FAN
- W220012O SUPPLY FAN
- W220012P SUPPLY FAN
- W220012Q SUPPLY FAN
- W220012R SUPPLY FAN
- W220012S SUPPLY FAN
- W220012T SUPPLY FAN
- W220012U SUPPLY FAN
- W220012V SUPPLY FAN
- W220012W SUPPLY FAN
- W220012X SUPPLY FAN
- W220012Y SUPPLY FAN
- W220012Z SUPPLY FAN
- W220013A SUPPLY FAN
- W220013B SUPPLY FAN
- W220013C SUPPLY FAN
- W220013D SUPPLY FAN
- W220013E SUPPLY FAN
- W220013F SUPPLY FAN
- W220013G SUPPLY FAN
- W220013H SUPPLY FAN
- W220013I SUPPLY FAN
- W220013J SUPPLY FAN
- W220013K SUPPLY FAN
- W220013L SUPPLY FAN
- W220013M SUPPLY FAN
- W220013N SUPPLY FAN
- W220013O SUPPLY FAN
- W220013P SUPPLY FAN
- W220013Q SUPPLY FAN
- W220013R SUPPLY FAN
- W220013S SUPPLY FAN
- W220013T SUPPLY FAN
- W220013U SUPPLY FAN
- W220013V SUPPLY FAN
- W220013W SUPPLY FAN
- W220013X SUPPLY FAN
- W220013Y SUPPLY FAN
- W220013Z SUPPLY FAN
- W220014A SUPPLY FAN
- W220014B SUPPLY FAN
- W220014C SUPPLY FAN
- W220014D SUPPLY FAN
- W220014E SUPPLY FAN
- W220014F SUPPLY FAN
- W220014G SUPPLY FAN
- W220014H SUPPLY FAN
- W220014I SUPPLY FAN
- W220014J SUPPLY FAN
- W220014K SUPPLY FAN
- W220014L SUPPLY FAN
- W220014M SUPPLY FAN
- W220014N SUPPLY FAN
- W220014O SUPPLY FAN
- W220014P SUPPLY FAN
- W220014Q SUPPLY FAN
- W220014R SUPPLY FAN
- W220014S SUPPLY FAN
- W220014T SUPPLY FAN
- W220014U SUPPLY FAN
- W220014V SUPPLY FAN
- W220014W SUPPLY FAN
- W220014X SUPPLY FAN
- W220014Y SUPPLY FAN
- W220014Z SUPPLY FAN
- W220015A SUPPLY FAN
- W220015B SUPPLY FAN
- W220015C SUPPLY FAN
- W220015D SUPPLY FAN
- W220015E SUPPLY FAN
- W220015F SUPPLY FAN
- W220015G SUPPLY FAN
- W220015H SUPPLY FAN
- W220015I SUPPLY FAN
- W220015J SUPPLY FAN
- W220015K SUPPLY FAN
- W220015L SUPPLY FAN
- W220015M SUPPLY FAN
- W220015N SUPPLY FAN
- W220015O SUPPLY FAN
- W220015P SUPPLY FAN
- W220015Q SUPPLY FAN
- W220015R SUPPLY FAN
- W220015S SUPPLY FAN
- W220015T SUPPLY FAN
- W220015U SUPPLY FAN
- W220015V SUPPLY FAN
- W220015W SUPPLY FAN
- W220015X SUPPLY FAN
- W220015Y SUPPLY FAN
- W220015Z SUPPLY FAN
- W220016A SUPPLY FAN
- W220016B SUPPLY FAN
- W220016C SUPPLY FAN
- W220016D SUPPLY FAN
- W220016E SUPPLY FAN
- W220016F SUPPLY FAN
- W220016G SUPPLY FAN
- W220016H SUPPLY FAN
- W220016I SUPPLY FAN
- W220016J SUPPLY FAN
- W220016K SUPPLY FAN
- W220016L SUPPLY FAN
- W220016M SUPPLY FAN
- W220016N SUPPLY FAN
- W220016O SUPPLY FAN
- W220016P SUPPLY FAN
- W220016Q SUPPLY FAN
- W220016R SUPPLY FAN
- W220016S SUPPLY FAN
- W220016T SUPPLY FAN
- W220016U SUPPLY FAN
- W220016V SUPPLY FAN
- W220016W SUPPLY FAN
- W220016X SUPPLY FAN
- W220016Y SUPPLY FAN
- W220016Z SUPPLY FAN
- W220017A SUPPLY FAN
- W220017B SUPPLY FAN
- W220017C SUPPLY FAN
- W220017D SUPPLY FAN
- W220017E SUPPLY FAN
- W220017F SUPPLY FAN
- W220017G SUPPLY FAN
- W220017H SUPPLY FAN
- W220017I SUPPLY FAN
- W220017J SUPPLY FAN
- W220017K SUPPLY FAN
- W220017L SUPPLY FAN
- W220017M SUPPLY FAN
- W220017N SUPPLY FAN
- W220017O SUPPLY FAN
- W220017P SUPPLY FAN
- W220017Q SUPPLY FAN
- W220017R SUPPLY FAN
- W220017S SUPPLY FAN
- W220017T SUPPLY FAN
- W220017U SUPPLY FAN
- W220017V SUPPLY FAN
- W220017W SUPPLY FAN
- W220017X SUPPLY FAN
- W220017Y SUPPLY FAN
- W220017Z SUPPLY FAN
- W220018A SUPPLY FAN
- W220018B SUPPLY FAN
- W220018C SUPPLY FAN
- W220018D SUPPLY FAN
- W220018E SUPPLY FAN
- W220018F SUPPLY FAN
- W220018G SUPPLY FAN
- W220018H SUPPLY FAN
- W220018I SUPPLY FAN
- W220018J SUPPLY FAN
- W220018K SUPPLY FAN
- W220018L SUPPLY FAN
- W220018M SUPPLY FAN
- W220018N SUPPLY FAN
- W220018O SUPPLY FAN
- W220018P SUPPLY FAN



Removed in Accordance with RIS 2015-17

PERRY NUCLEAR POWER PLANT  
10 CENTER RD., PERRY, OHIO 44081

FINAL PLANT LAYOUT,  
PLOT PLAN, PLANT AREA  
FIGURE 1.2-2  
(DWG. E-036-0022-00000)

Removed in Accordance with RIS 2015–17

PERRY NUCLEAR POWER PLANT  
10 CENTER RD., PERRY, OHIO 44081

FINAL PLANT LAYOUT, PLAN A ABOVE  
ELEVS. 568'-6", 574'-10", 577'-6"  
AND 580'-6", PLANT COMPLEX  
FIGURE 1.2-3  
(DWG. E-013-0003-00000)

Removed in Accordance with RIS 2015–17

<p>PERRY NUCLEAR POWER PLANT 10 CENTER RD., PERRY, OHIO 44081</p>
<p>FINAL PLANT LAYOUT, PLAN B ABOVE ELEVS. 593'-6", 599'-0", 600'-6", 602'-6", AND 605'-6", PLANT COMPLEX FIGURE 1.2-4 (DWG. E-013-0004-00000)</p>

Removed in Accordance with RIS 2015-17

PERRY NUCLEAR POWER PLANT  
10 CENTER RD., PERRY, OHIO 44081

FINAL PLANT LAYOUT, PLAN C ABOVE  
ELEVS. 620'-6", 623'-6" AND  
624'-6", PLANT COMPLEX  
FIGURE 1.2-5  
(DWG. E-013-0005-00000)

FIGURE REDACTED PER RIS 2015–17

<p>PERRY NUCLEAR POWER PLANT 10 CENTER RD., PERRY, OHIO 44081</p>
<p>FINAL PLANT LAYOUT, PLAN D ABOVE ELEVS. 638'-6", 642'-0" AND 647'-6", PLANT COMPLEX FIGURE 1.2-6 (DWG. E-013-0006-00000)</p>



Removed in Accordance with RIS 2015-17

PERRY NUCLEAR POWER PLANT  
10 CENTER RD., PERRY, OHIO 44081

PLANT LAYOUT PLAN E ABOVE  
ELEVS. 652'-0" AND EL. 654'-6",  
PLANT COMPLEX  
FIGURE 1.2-7  
(DWG. E-013-0007-00000)

Removed in Accordance with RIS 2015–17

PERRY NUCLEAR POWER PLANT 10 CENTER RD., PERRY, OHIO 44081
FINAL PLANT LAYOUT, PLAN F ABOVE ELEVS. 664'-7", 665'-0", AND 670'-6", PLANT COMPLEX FIGURE 1.2-8 (DWG. E-013-0008-00000)

Removed in Accordance with RIS 2015-17

PERRY NUCLEAR POWER PLANT  
10 CENTER RD., PERRY, OHIO 44081

FINAL PLANT LAYOUT, PLAN G ABOVE  
ELEVS. 689'-6", PLANT COMPLEX  
FIGURE 1.2-9  
(DWG. E-013-0009-00000)

Removed in Accordance with RIS 2015–17

PERRY NUCLEAR POWER PLANT  
10 CENTER RD., PERRY, OHIO 44081

FINAL PLANT LAYOUT,  
PLAN H ROOF PLAN  
FIGURE 1.2-10  
(DWG. E-013-0010-00000)

Removed in Accordance with RIS 2015–17

PERRY NUCLEAR POWER PLANT  
10 CENTER RD., PERRY, OHIO 44081

FINAL PLANT LAYOUT,  
SECTION A-A  
FIGURE 1.2-11  
(DWG. E-013-0011-00000)

Removed in Accordance with RIS 2015–17

PERRY NUCLEAR POWER PLANT  
10 CENTER RD., PERRY, OHIO 44081

FINAL PLANT LAYOUT,  
SECTION B-B  
FIGURE 1.2-12  
(DWG. E-013-0012-000000)

Removed in Accordance with RIS 2015-17

PERRY NUCLEAR POWER PLANT  
10 CENTER RD., PERRY, OHIO 44081

FINAL PLANT LAYOUT,  
SECTION C-C  
FIGURE 1.2-13  
(DWG. E-013-0013-00000)

Removed in Accordance with RIS 2015–17

PERRY NUCLEAR POWER PLANT  
10 CENTER RD., PERRY, OHIO 44081

FINAL PLANT LAYOUT, CIRCULATING  
WATER PUMPHOUSE, PLANS AND ELEVATIONS  
FIGURE 1.2-14 (SHEET 1 OF 2)  
(DWG. E-015-0016-00000)



Removed in Accordance with RIS 2015–17

PERRY NUCLEAR POWER PLANT  
10 CENTER RD., PERRY, OHIO 44081

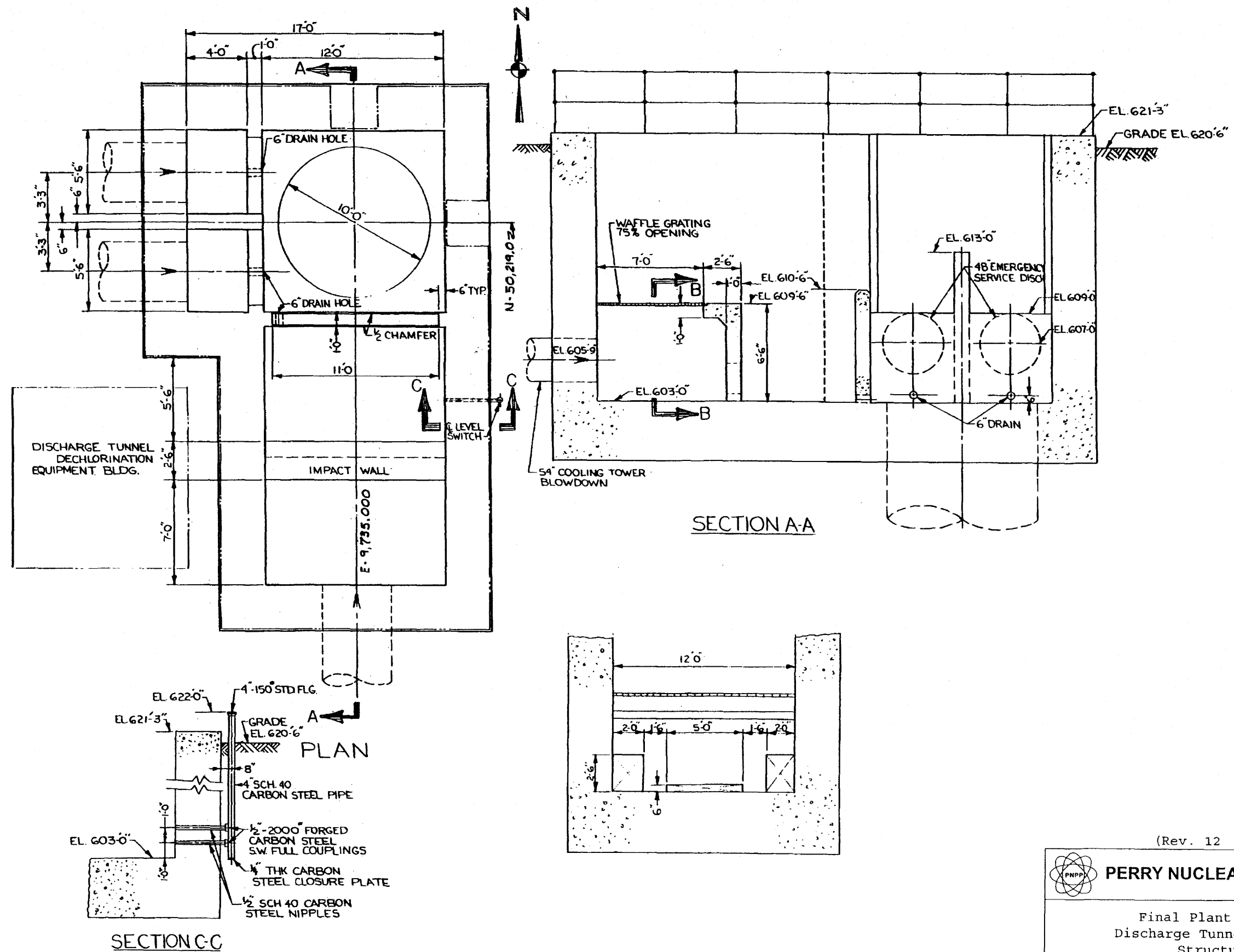
FINAL PLANT LAYOUT, CIRCULATING  
WATER PUMPHOUSE, PLANS AND ELEVATIONS  
FIGURE 1.2-14 (SHEET 2 OF 2)  
(DWG. E-015-0017-00000)

Removed in Accordance with RIS 2015-17


PERRY NUCLEAR POWER PLANT  
10 CENTER RD., PERRY, OHIO 44081

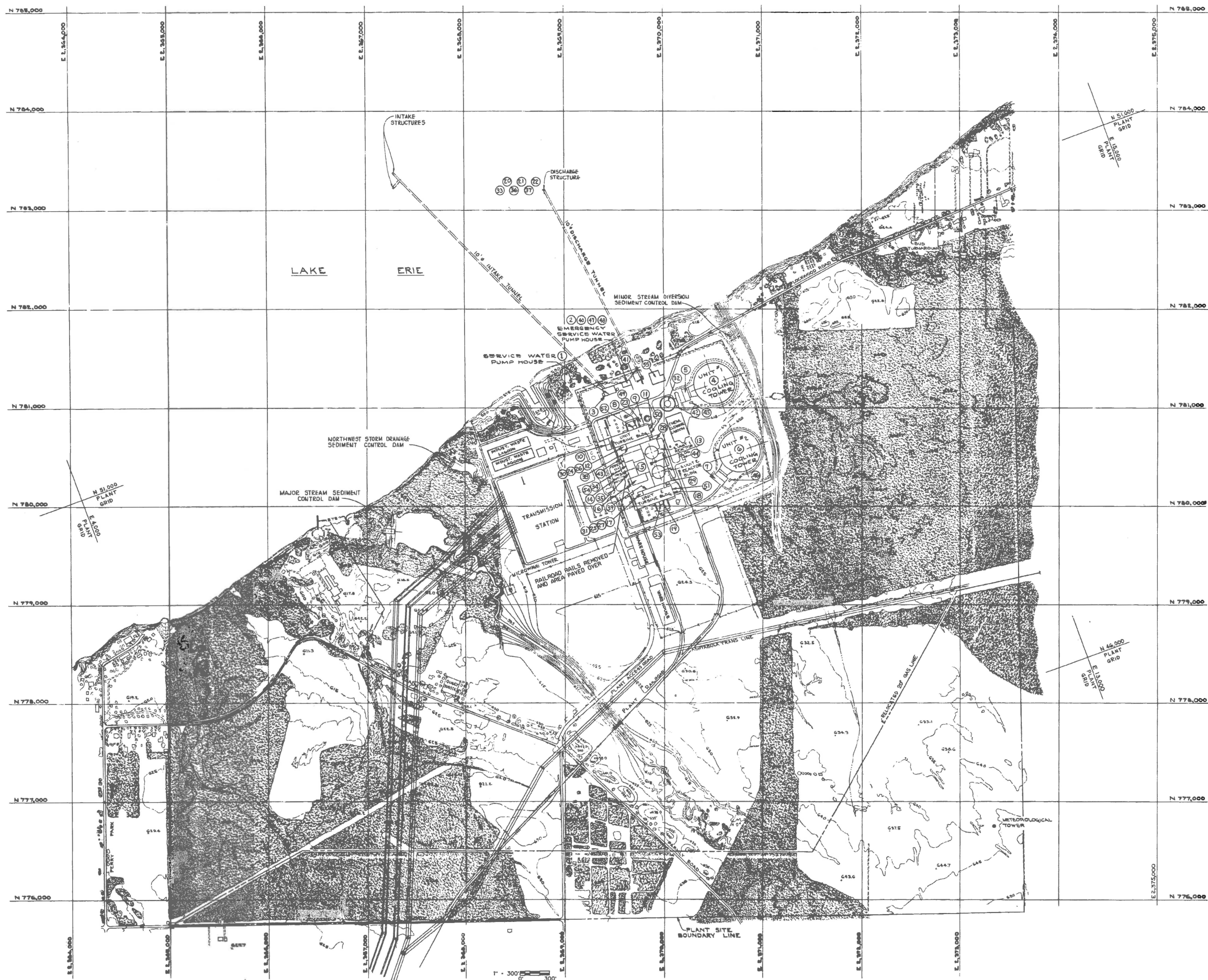
FINAL PLANT LAYOUT,  
SERVICE WATER PUMPHOUSE  
FIGURE 1.2-15  
(DWG. E-015-0015-000000)

Removed in Accordance with RIS 2015-17



(Rev. 12 1/03)

	<b>PERRY NUCLEAR POWER PLANT</b>
	Final Plant Layout, Discharge Tunnel Entrance Structures
	Figure 1.2-17 (Dwg. B-015-003)



ITEM NO.	DESCRIPTION	RELEASE ELEVATION
1.	CONSTRUCTION SANITARY SEWAGE EFFLUENT	576'-0"
2.	EMERGENCY SERVICE WATER PUMP HOUSE VENT, EXHAUST	538'-5"
3.	SERVICE WATER PUMP HOUSE VENT, EXHAUST	826'-0"
4.	COOLING TOWER AIR OUTLET - UNIT 1	1138'-0"
5.	CIRCULATING WATER PUMP HOUSE VENT, EXHAUST - UNIT 1	888'-0"
6.	COOLING TOWER AIR OUTLET - UNIT 2	1138'-0"
7.	CIRCULATING WATER PUMP HOUSE VENT, EXHAUST - UNIT 2	888'-0"
8.	TURBINE BUILDING AND HEATER BAY EXHAUST - UNIT 1	722'-0"
9.	AUXILIARY BOILER BUILDING VENT, EXHAUST	847'-0"
10.	WATER TREATMENT BUILDING VENT, EXHAUST	843'-3" & 848'-3"
11.	LOOSE OIL STORAGE AREA VENT, EXHAUST - UNIT 1	836'-3"
12.	OFF-GAS AND TURBINE BUILDINGS VENT EXHAUST - UNIT 1	723'-0"
13.	PLANT VENT, - UNIT 1 AND UNIT 2	753'-0"
14.	DIESEL GENERATORS BUILDING VENT, EXHAUST	839'-11"
15.	CONTROL COMPLEX VENT, EXHAUST	897'-4"
16.	SERVICE BUILDING VENT, EXHAUST	871'-5"
17.	OFF-GAS AND TURBINE BUILDINGS VENT EXHAUST - UNIT 2	723'-0"
18.	LOOSE OIL STORAGE AREA VENT, EXHAUST - UNIT 2	836'-3"
19.	TURBINE BUILDING AND HEATER BAY EXHAUST - UNIT 2	722'-0"
20.	COOLING TOWER BLOWDOWN	554'-4"
21.	SERVICE WATER DISCHARGE	554'-4"
22.	EMERGENCY SERVICE WATER DISCHARGE	554'-4"
23.	AUXILIARY BOILER FLUE GAS VENT, EXHAUST (2)	771'-8"
24.	START-UP CONDENSER EVACUATION EXHAUST - UNIT 1	723'-0"
25.	START-UP CONDENSER EVACUATION EXHAUST - UNIT 2	723'-0"
26.	OFF-GAS RELEASE - UNIT 1	723'-0"
27.	OFF-GAS RELEASE - UNIT 2	723'-0"
28.	EMERGENCY SERVICE WATER OVERFLOW - UNIT 1	823'-0"
29.	EMERGENCY SERVICE WATER OVERFLOW - UNIT 2	823'-0"
30.	STEAM PACKING EXHAUST DISCHARGE - UNIT 1	723'-0"
31.	STEAM PACKING EXHAUST DISCHARGE - UNIT 2	723'-0"
32.	FUEL OIL STORAGE TANK VENT	869'-0"
33.	LUBRICANT OIL DISCHARGE	554'-4"
34.	EMERGENCY DIESEL GENERATOR FUEL OIL TANK VENTS (12)	856'-3" & 863'-0"
35.	EMERGENCY DIESEL GENERATORS CONNECTION EXHAUST GASES (8)	897'-0"
36.	CHEMICAL CLEANING TREATMENT WASTE	554'-4"
37.	SANITARY SEWAGE EFFLUENT	854'-4"
38.	TURBINE POWER COMPLEX BATTERY ROOM EXHAUST - UNIT 1	857'-0"
39.	TURBINE POWER COMPLEX BATTERY ROOM EXHAUST - UNIT 2	857'-0"
40.	DIESEL DRIVEN FIRE PUMP AREA EXHAUST	823'-0"
41.	DISCHARGE TUNNEL DECONTAMINATION EQUIPMENT BUILDING EXHAUST	854'-2"
42.	FUEL OIL PUMP HOUSE VENT, EXHAUST	857'-0"
43.	RAHWASTE BUILDING CEMENT STORAGE AREA VENT, EXHAUST	854'-0"
44.	HYPOCHLORITE GENERATOR BUILDING AREA VENT, EXHAUST	854'-2"
45.	COOLING TOWER ACID ADDITION STORAGE BUILDING VENT, EXHAUST - UNIT 1	836'-0"
46.	COOLING TOWER ACID ADDITION STORAGE BUILDING VENT, EXHAUST - UNIT 2	836'-0"
47.	DIESEL DRIVEN FIRE PUMP ENGINE EXHAUST	854'-0"
48.	DIESEL DRIVEN FIRE PUMP FUEL OIL TANK VENT	854'-0"
49.	AUXILIARY BOILER SAFETY VALVE ESCAPES, AUXILIARY BOILER HEATING WATER ESCAPE AND VENT AND AUXILIARY BOILER BLOWDOWN TANK VENT	857'-0"
50.	MAIN TURBINE LOOSE OIL RESERVOIR VENT - UNIT 1	718'-0"
51.	MAIN TURBINE LOOSE OIL RESERVOIR VENT - UNIT 2	718'-0"
52.	MAIN FEEDWATER PUMP TURBINE OIL RESERVOIR VENT - UNIT 1 (2)	883'-11"
53.	MAIN FEEDWATER PUMP TURBINE OIL RESERVOIR VENT - UNIT 2 (2)	883'-11"
54.	EMERGENCY DIESEL GENERATOR LOOSE OIL SUMP AND CONDUIT VENTS	857'-0"
55.	LOW LEVEL RADWASTE STORAGE AND PROCESSING FACILITY VENT EXHAUST	658'-0"

NOTES: 1. COORDINATES SHOWN ON THIS DRAWING ARE BASED ON THE OHIO STATE COORDINATE SYSTEM.

2. REACTOR COORDINATES:

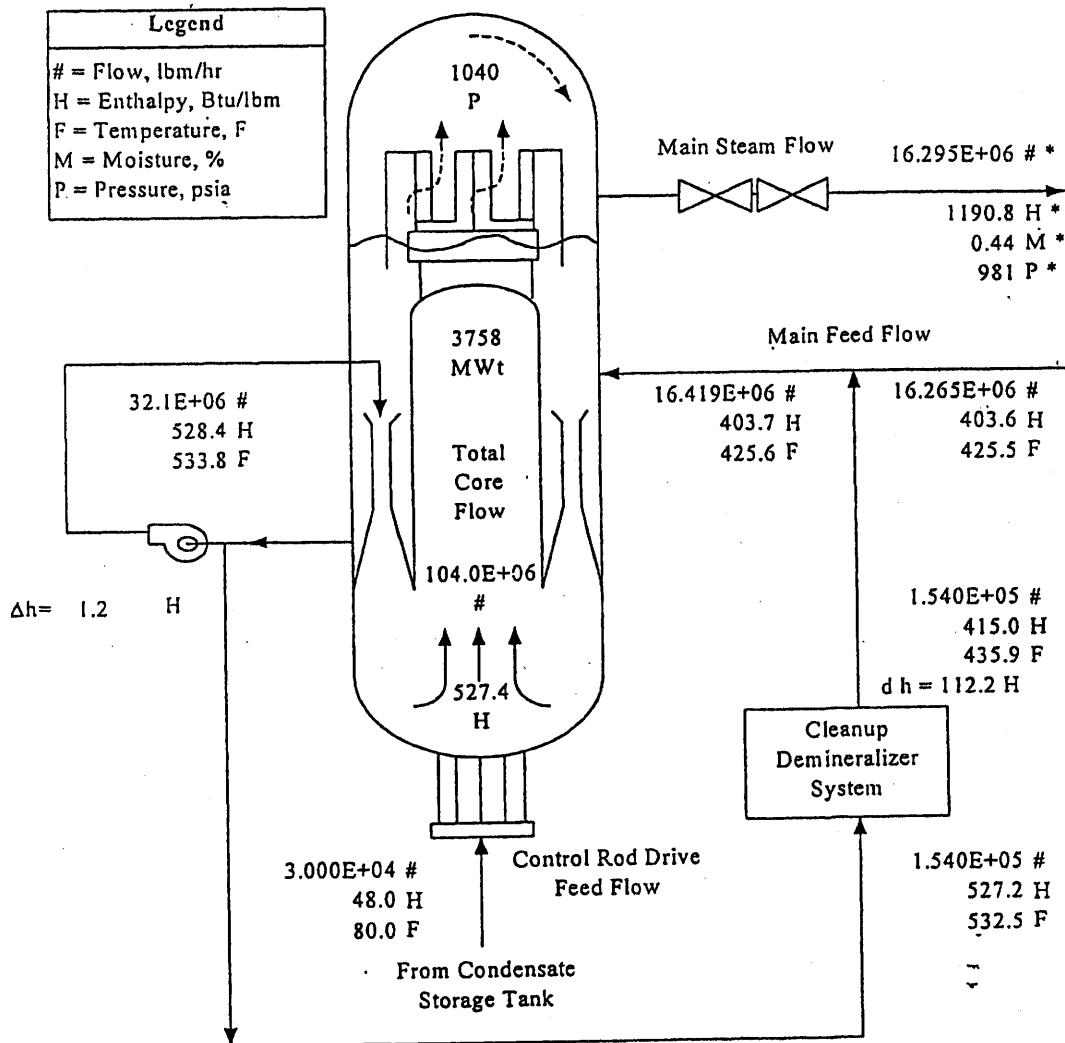
	OHIO GRID	PLANT GRID
UNIT 1	N780,545 E8,368,875	N48,466 E8,570
UNIT 2	N780,346,725 E8,368,847,190	N48,255 E8,570

3. ALL BACKGROUND CONTOURS SUPPLIED BY AERIAL SURVEYS, INC.

(REV. 21 10/2019)

**PERRY NUCLEAR POWER PLANT**  
10 CENTER RD., PERRY, OHIO 44081

FINAL PLANT LAYOUT,  
PLOT PLAN RELEASE POINT DESIGNATION  
FIGURE 1.2-18  
(DWG. D-036-0011-00000)



\* Conditions at upstream side of TSV

Core Thermal Power	3758.0
Pump Heating	10.7
Cleanup Losses	-5.1
Other System Losses	-1.1
<b>Turbine Cycle Use</b>	<b>3762.5 MWt</b>

(Rev. 12 1/03)

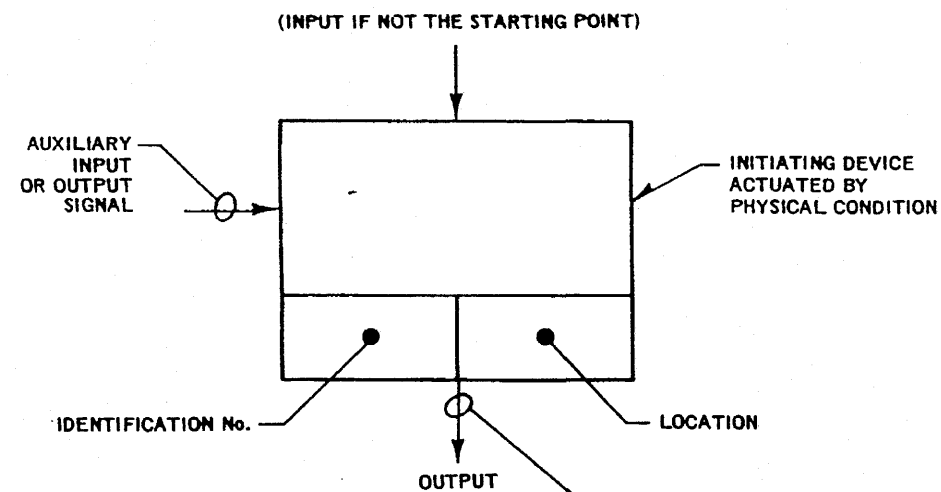


## PERRY NUCLEAR POWER PLANT

Heat Balance at Rated Power

Figure 1.2-19

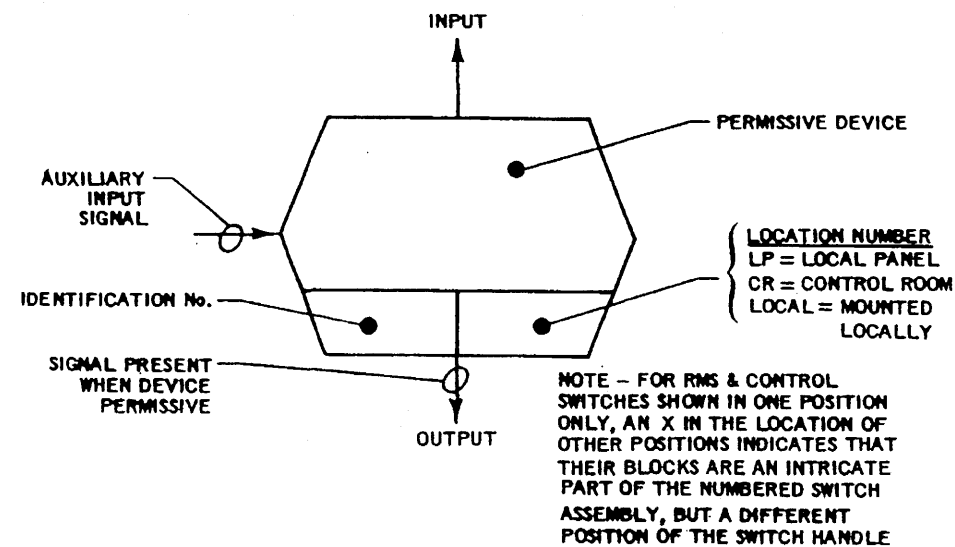




#### COMMAND BLOCK

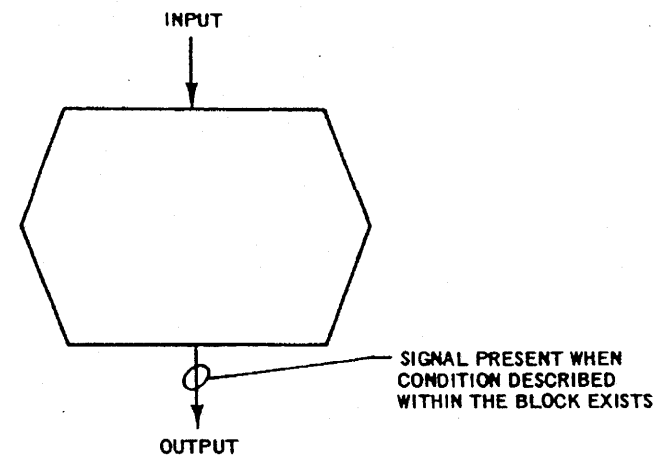
THIS BLOCK CAN REPRESENT A SWITCH, VALVE, PROBE, TIMER OR TRIP CIRCUIT. IT IS NORMALLY THE STARTING POINT OF A FUNCTIONAL SEQUENCE WITH AN OUTPUT ONLY, BUT CAN HAVE INPUT AND AUX. INPUT DEPENDING ON THE TYPE OF DEVICE. THE SAME DEVICE MAY HAVE A NUMBER OF OUTPUTS, BUT EACH FUNCTIONAL SEQUENCE INITIATED SHALL BE SHOWN BY AN INDIVIDUAL BLOCK SHOWING THE SAME IDENTIFICATION NUMBER

SIGNAL IS PRESENT WHEN CONDITION IS DESCRIBED WITHIN THE BLOCK EXISTS



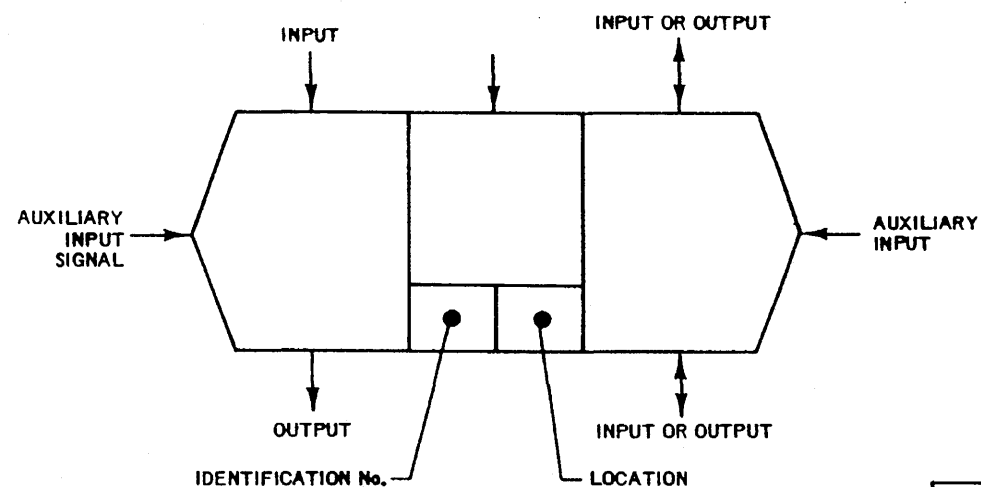
#### PERMISSIVE DEVICE BLOCK

THIS BLOCK DEFINES A PERMISSIVE FUNCTION WHICH MUST BE SATISFIED TO PERMIT THE SIGNAL FLOW TO PASS TO THE NEXT BLOCK. THIS BLOCK HAS INCOMING, OUTGOING AND MAY HAVE AUXILIARY SIGNALS. THE OUTPUT FROM THIS PERMISSIVE MAY BE SEALED IN



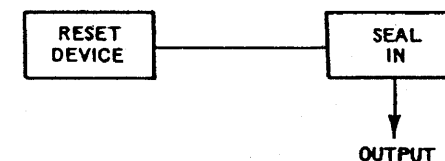
#### PERMISSIVE E CONDITION BLOCK

WHERE THE PERMISSIVE IS A GENERAL CONDITION AND NOT IDENTIFIED WITH A SINGLE DEVICE THE OUTPUTS ENCLOSURE ONLY IS SHOWN.



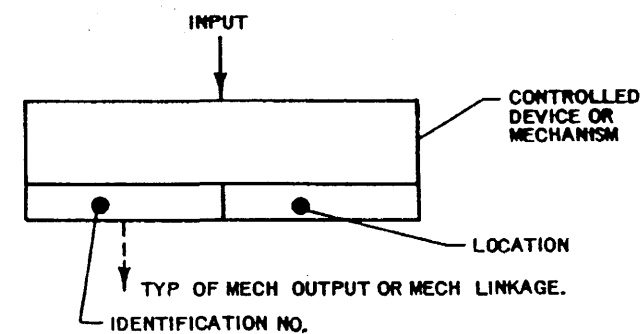
#### PERMISSIVE OPERATED BY OTHER DEVICES BLOCK

THIS BLOCK IS A PERMISSIVE OPERATED BY DEVICES SUCH AS VALVE OR PUMP SWITCHGEAR DESIGNATED IN THE INNER BLOCK. THIS COND OR DEVICE EFFECTS THE OPERATION OF THE FINAL DEVICE. IT HAS ELECT INPUTS, MECH INPUTS, AUX INPUTS (MECH OR ELEC) AND MECH OR ELECT OUTPUTS. THIS DEVICE IS NORMALLY A VALVE. THIS IS ALSO USED FOR OTHER INPUT/OUTPUT POWER SOURCES SUCH AS AIR OR HYDRAULIC. A SOLENOID PILOT VALVE FOR AN AIR OPERATED VALVE IS AN EXAMPLE OF THIS TYPE DEVICE.



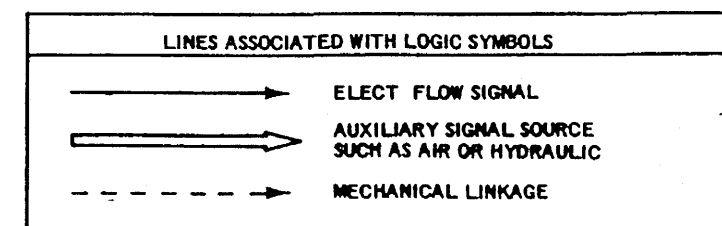
#### SEAL-IN BLOCK

A SEAL-IN OR LATCHING BLOCK'S FUNCTION IS TO MAINTAIN AN INPUT SIGNAL TO A DEVICE ONCE THE DEVICE HAS BEEN ACTUATED. RESETTING OR INHIBITING A SEAL-IN MAY BE EITHER EXPRESSED OR IMPLIED. IF IMPLIED, THE SEAL-IN WILL BE RESET OR INHIBITED BY INTERRUPTING THE SIGNAL TO THE DEVICE DOWNSTREAM FROM THE POINT WHERE SEAL-IN IS INDICATED. A SEAL-IN SHOWN WITHOUT A RESET DEVICE IMPLIES THAT THE RESET DEVICE IS PART OF, AND LOCATED ON THE NEAREST VALVE OR CONTACTOR. IN ALL OTHER CASES THE RESET DEVICE SHALL BE SHOWN IN CONJUNCTION WITH THE SEAL-IN.



#### FINAL DEVICE BLOCK

THIS BLOCK CAN BE A RELAY, VALVE, ELECTRO-MECH SW. ETC. NORMALLY IT HAS ONLY INPUTS, BUT CAN HAVE MECH OUTPUTS OR POSITION SWITCH OUTPUTS.



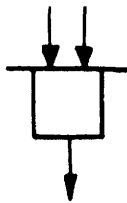
(Rev. 12 1/03)





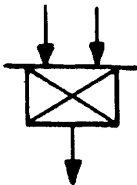
# SYMBOL

# FUNCTION



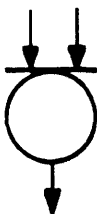
AND:

A FUNCTION WHICH PRODUCES AN OUTPUT ONLY WHEN EVERY INPUT EXISTS.



NOT:

A FUNCTION WHICH PRODUCES AN OUTPUT IF ANY OF THE INPUTS DOES NOT EXIST.



OR:

A FUNCTION WHICH PRODUCES AN OUTPUT IF ANY ONE OF ITS INPUTS EXIST.



TIME  
DELAY

A FUNCTION WHICH PRODUCES AN OUTPUT FOLLOWING A TIME DELAY AFTER RECEIVING AN INPUT.



ADJUSTABLE  
TIME DELAY

A FUNCTION WHOSE OUTPUT IS DE-ENERGIZED FOLLOWING A TIME DELAY AFTER ITS INPUT IS DE-ENERGIZED.



LOGIC INFORMATION TRANSMISSION



ANALOG INFORMATION TRANSMISSION

(Rev. 12 1/03)

LOGIC SYMBOLS



PERRY NUCLEAR POWER PLANT

AE (GAI) Logic Symbols Used on  
Functional Diagrams

Figure 1.2-23