

Attachment C

Boring Logs

(16 pages)



Monitoring Well/ Piezometer Name	Date Drilled/ Completed	Total Depth Well (ft btoc)	Bottom of Well Elevation (ft msl)	Ground Elevation (ft msl)	Top of Casing Elevation (ft msl)	Depth to Top of Red Beds (ft bgs)	Top of Red Bed Elevation (ft msl)
PZ-36	7/20/05	78.98	3419.51	3494.79	3498.49	75.0	3419.79
PZ-44	1/22/08	82.98	3416.90	3496.59	3499.88	77.1	3419.49
PZ-46	1/23/08	93.83	3412.04	3502.38	3505.87	87.4	3414.98
PZ-47	1/24/08	92.22	3411.56	3500.60	3503.78	87.0	3413.60
PZ-57	1/23/08	99.56	3415.44	3511.79	3515.00	93.5	3418.29
TP-64	1/11/08	70.81	3433.99	3502.08	3504.80	65.3	3436.78
TP-65	1/11/08	57.68	3436.07	3490.40	3493.75	52.5	3437.90
TP-66	1/10/08	57.78	3430.88	3485.45	3488.66	51.0	3434.45
TP-76	2/7/08	53.42	3436.78	3487.06	3490.20	47.1	3439.96
TP-77	2/7/08	51.30	3436.09	3484.19	3487.39	45.4	3438.79
TP-83	2/11/08	55.55	3435.60	3487.77	3491.15	49.8	3437.97
TP-84	2/12/08	65.24	3429.59	3491.56	3494.83	58.7	3432.86
TP-87	3/15/08	49.02	3438.47	3484.17	3487.49	43.3	3440.87
TP-136	3/20/09	55.21	3438.01	3490.17	3493.22	50.5	3439.67
TP-137	3/20/09	56.46	3434.68	3488.00	3491.14	51.5	3436.50

PROJECT: Waste Control Specialists LLC LOCATION: Andrews County, TX					WELL / BORING NO: PZ-36				
DATE: 7/20/2005 DRILLING COMPANY: Groundwater Monitoring, Inc. DRILLING EQUIPMENT: CME 75 DRILLING METHOD: HSA to 30', Air Rotary 30' to TD					NORTHING: 6878185.3457 EASTING: 563718.5732 ELEVATION: 3495 TOTAL DEPTH: 78.0' LOGGED BY: Ed Hughes				

DEPTH (ft)	SYMBOL	USCS	STRATUM DESCRIPTION	SAMPLE	REC %	BLOW COUNTS	Water Level	ELEV (ft)	WELL CONSTRUCTION
0		SP	Fine SAND, dry, tan. CALICHE, moderately hard, very dry, white to tan.					3490	Concrete
5								3485	Cement/Bentonite Slurry
10		SP	SAND, fine grained, well sorted, loose, dry, reddish brown. Similar to above (STA), damp at 9'.					3480	
15								3475	
20		SC	Clayey SAND, fine grained, loose, damp, reddish brown.					3470	
25								3465	
30			CALICHE, orange sand matrix, moderately hard, dry.					3460	Bentonite Chips
35			Similar to above but slightly harder at 34'.					3455	
40			CALICHE, very hard, dry, pisolitic, white to tan.					3450	
45								3445	
50								3440	
55			Sandy GRAVEL, moderately hard, chert gravel is various colors, generally less than 1" diameter, and sub-rounded, dry.					3435	
60								3430	2-Inch Diameter PVC
65		GW						3425	Slotted PVC
70								3420	Sand
75		CL	CLAY, stiff, dry, maroon.					3415	Slough
80			TD = 79'						

COOK-JOYCE INC.
ENGINEERING AND CONSULTING
 815 WEST OLIVE ST.
 SUITE 101, TEXAS 79761-2699
 (817) 674-0827 FAX (817) 674-0823

This boring log should not be used separately from the original report.

PROJECT NO. 05049.01

PAGE 1 OF

CJI BORING LOG WITH WELL WCS 05049.01 BORING LOGS.GPJ LOG A EMIN04.GDT 11/25/05

PROJECT: Waste Control Specialists LLC				WELL / BORING NO: PZ-44			
LOCATION: Andrews County, TX							
DATE: 1/22/2008				NORTHING: 6879514.4814			
DRILLING COMPANY: Talon LPE				EASTING: 561028.2106			
DRILLING EQUIPMENT: Reichdrill T-650-WII				ELEVATION: 3496.6'			
DRILLING METHOD: Air Rotary				TOTAL DEPTH: 81' LOGGED BY: David Lawler			

DEPTH (ft)	SYMBOL	USCS	STRATUM DESCRIPTION	SAMPLE	REC %	BLOW COUNTS	OVA (PPM)	ELEV (ft)	WELL CONSTRUCTION
0		SP	SAND, fine grained, well sorted, loose, dry, orange to tan.					3495	Cement/Bentonite Slurry 2-Inch Diameter PVC
5			CALICHE, moderately hard, dry, light gray, pisolitic with tan sandy matrix.					3490	
10			SAND, well sorted, loose, dry, orange to tan.					3485	
15		SP						3480	
20								3475	
25								3470	
30			CALICHE, moderately hard, dry, light gray, pisolitic.					3465	
35								3460	Bentonite Chips
40								3455	
45			Similar to above, very hard, white to light gray.					3450	
50								3445	
55			Gravelly SAND, well graded, loose, dry, tan.					3440	
60		SW						3435	Sand
65			Sandy GRAVEL, well graded, well cemented with tan sandy matrix. Gravel is various colored chert, sub-angular to sub-rounded gravel.					3430	
70		GW						3425	2-Inch Diameter PVC Screen
75								3420	
80			Saturated, CLAYSTONE (77.1'), plastic, maroon.					3415	Well End Cap
			TD = 81'						

CJ1 BORING LOG WITH WELL VCS 03047.05 2008.GPJ CJ1 LOG WITH WELL GDT 09/11/07

COOK-JOYCE INC.
ENGINEERING AND CONSULTING
812 WEST ELEVENTH
AUSTIN, TEXAS 78701-2000
(512) 474-9097 FAX (512) 474-8483

PROJECT NO. 03047.05

This boring log should not be used separately from the original report.

PAGE 1 OF 1

PROJECT: Waste Control Specialists LLC				WELL / BORING NO:			
LOCATION: Andrews County, TX				PZ-46			
DATE: 1/23/2008				NORTHING: 6879390.3302			
DRILLING COMPANY: Talon LPE				EASTING: 563517.2915			
DRILLING EQUIPMENT: Reichdrill T-650-WII				ELEVATION: 3502.4'			
DRILLING METHOD: Air Rotary				TOTAL DEPTH: 91' LOGGED BY: David Lawler			

DEPTH (ft)	SYMBOL	USCS	STRATUM DESCRIPTION	SAMPLE	REC %	BLOW COUNTS	OVA (PPM)	ELEV (ft)	WELL CONSTRUCTION
0		SP	SAND, well sorted, loose, dry, orange to tan.					3500	TOC ELEV: 3505.87'
5			CALICHE, moderately hard, dry, tan, with orange sand matrix.					3495	Cement/Bentonite Slurry 2-Inch Diameter PVC
10			SAND, fine grained, well sorted, loose, dry, light brown to orange.					3490	
15								3485	
20								3480	
25		SP	Similar to above (STA), moist.					3475	
30								3470	
35								3465	
40								3460	Bentonite Chips
45			CALICHE, moderately hard with tan sand matrix, dry, light gray, pisolitic.					3455	
50			STA, hard, light gray to white.					3450	
55			STA, very hard.					3445	
60								3440	
65		SW	Gravelly SAND, well graded, loose, dry, tan to light brown.					3435	
70								3430	Sand
75			Sandy GRAVEL, well graded, loose, dry. Gravel is various colored chert in a tan sand matrix.					3425	
80		GW						3420	2-Inch Diameter PVC Screen
85								3415	
90			CLAYSTONE (87.4'), stiff, maroon.					3410	Well End Cap
95			TD = 91'					3405	

CJL BORING LOG WITH WELL WCS 03047.05 2008.GPJ CJL LOG WITH WELL GDT 08/11/07

PROJECT: Waste Control Specialists LLC LOCATION: Andrews County, TX				WELL / BORING NO: <div style="font-size: 1.2em; font-weight: bold;">PZ-47</div>			
DATE: 1/24/2008 DRILLING COMPANY: Talon LPE DRILLING EQUIPMENT: Reichdrill T-650-WII DRILLING METHOD: Air Rotary				NORTHING: 6878917.0254 EASTING: 565277.6223 ELEVATION: 3500.6' TOTAL DEPTH: 89.5'			
				LOGGED BY: David Lawler			

DEPTH (ft)	SYMBOL	USCS	STRATUM DESCRIPTION	SAMPLE	REC %	BLOW COUNTS	O/A (PPM)	ELEV (ft)	WELL CONSTRUCTION
5		SP	SAND, fine grained, well sorted, loose, dry, orange to light brown.					3500	<div style="text-align: center;"> </div>
10			CALICHE, moderately hard, dry, light gray to tan.					3495	
15			SAND, fine grained, well graded, loose, dry, orange to light brown.					3490	
20								3485	
25		SW						3480	
30								3475	
35								3470	
40			CALICHE, moderately hard, dry, light gray to tan.					3465	
45								3460	
50								3455	
55			Similar to above, very hard, light gray to white.					3450	
60								3445	
65			Gravelly SAND, well graded, loose, dry, tan to light brown, various colored chert gravel.					3440	
70		SW						3435	
75								3430	
80		GW	Sandy GRAVEL, well graded, loose, dry. Sand is tan and gravel is sub-angular to sub-rounded various colored chert.					3425	
85								3420	
90			CLAYSTONE (87.0'), stiff, maroon.					3415	
95			TD = 89.5'					3410	
100								3405	
								3400	

COOK-JOYCE INC.
 ENGINEERING AND CONSULTING
 812 WEST ELEVENTH
 AUSTIN, TEXAS 78701-2000
 (512) 474-9097 FAX (512) 474-8463

PROJECT NO. 03047.05

 This boring log should not be used separately from the original report.

CJI BORING LOG WITH WELL WCS 03047.05 2008.GPJ CJI LOG WITH WELL.GDT 08/11/07

PROJECT: Waste Control Specialists LLC LOCATION: Andrews County, TX				WELL / BORING NO: <div style="font-size: 1.2em; font-weight: bold;">PZ-57</div>			
DATE: 1/23/2008 DRILLING COMPANY: Talon LPE DRILLING EQUIPMENT: Reichdrill T-650-WII DRILLING METHOD: Air Rotary				NORTHING: 6880721.3582 EASTING: 563883.6205 ELEVATION: 3511.8' TOTAL DEPTH: 98'			
				LOGGED BY: David Lawler			

DEPTH (ft)	SYMBOL	USCS	STRATUM DESCRIPTION	SAMPLE	REC %	BLOW COUNTS	OVA (PPM)	ELEV (ft)	WELL CONSTRUCTION		
5	SP		SAND, well sorted, dry, orange to light brown.					3510	Cement/Bentonite Slurry 2-Inch Diameter PVC		
10			Similar to above (STA), moist.					3505			
15	SP		CALICHE, moderately hard with orange sandy matrix, dry, light gray.					3500			
20								3495			
25										3490	
30	SP		SAND, fine grained, well sorted, loose, dry, orange.					3485			
35								3480			
40										3475	
45										3470	
50	SP		CALICHE, moderately hard, dry, light gray, pisolitic.					3465			
55										3460	
60					STA, very hard, dry, white to light gray.						3455
65					STA, moderately hard, dry, light gray to light brown with orange sandy matrix.						3450
70	SW							3445			
75										3440	
80					Gravelly SAND, well graded, loose, dry, various colored chert gravel.						3435
85	GW		Sandy GRAVEL, well cemented. Gravel is sub-rounded and various colored. Sand is tan.					3430	Sand 2-Inch Diameter PVC Screen		
90										3425	
95			CLAYSTONE (93.5'), stiff, maroon.					3420	Well End Cap		
100			TD = 98'					3415			
105								3410			
								3405			

C/J BORING LOG WITH WELL WCS 03047.05 2008.GPJ C/J LOG WITH WELL GDT 06/11/07

PROJECT: Waste Control Specialists LLC LOCATION: Andrews County, TX				WELL / BORING NO: <div style="font-size: 1.2em; font-weight: bold;">TP-64</div>			
DATE: 1/11/2008 DRILLING COMPANY: Talon LPE DRILLING EQUIPMENT: Reichdrill T-650-WII DRILLING METHOD: Air Rotary				NORTHING: 6877785.005 EASTING: 562244.1728 ELEVATION: 3502.1' TOTAL DEPTH: 68.1' LOGGED BY: David Lawler			

DEPTH (ft)	SYMBOL	USCS	STRATUM DESCRIPTION	SAMPLE	REC %	BLOW COUNTS	OVA (PPM)	ELEV (ft)	WELL CONSTRUCTION
		ML	Sandy SILT, dry, tan.					3500	<div style="text-align: center;"> </div> <div style="text-align: right; font-size: 0.8em;"> TOC ELEV: 3504.80' Cement/Bentonite Slurry 2-Inch Diameter PVC </div>
5			CALICHE, moderately hard with tan sandy matrix, dry.					3495	
10								3490	
15								3485	
20								3480	
25								3475	
30			Similar to above (STA), hard, dry, light gray to white.					3470	Bentonite Chips
35								3465	
40								3460	
45			STA, very hard, dry, light gray to white.					3455	
50								3450	
55			Sandy GRAVEL, well cemented, dry, various colored gravel and light gray to pink sand. Gravel is sub-rounded. Fossils.					3445	Sand
60		GW						3440	2-Inch Diameter PVC Screen
65			CLAYSTONE (65.3'), stiff, dry, maroon.					3435	Well End Cap
70			TD = 68.1'					3430	

CJI BORING LOG WITH WELL WCS 03047.05 2008 GPJ CJI LOG WITH WELL GDT 08/11/07

PROJECT: Waste Control Specialists LLC				WELL / BORING NO: TP-65			
LOCATION: Andrews County, TX				NORTHING: 6876654.5425			
DATE: 1/11/2008				EASTING: 563621.5985			
DRILLING COMPANY: Talon LPE				ELEVATION: 3490.4'			
DRILLING EQUIPMENT: Reichdrill T-650-WII				TOTAL DEPTH: 54.5'			
DRILLING METHOD: Air Rotary				LOGGED BY: David Lawler			

DEPTH (ft)	SYMBOL	USCS	STRATUM DESCRIPTION	SAMPLE	REC %	BLOW COUNTS	OVA (PPM)	ELEV (ft)	WELL CONSTRUCTION
0		ML	Sandy SILT, loose, dry, tan.					3490	<p>TOC ELEV: 3493.75'</p> <p>Cement/Bentonite Slurry</p> <p>2-Inch Diameter PVC</p> <p>Bentonite Chips</p> <p>Sand</p> <p>2-Inch Diameter PVC Screen</p> <p>Well End Cap</p>
5			CALICHE, moderately hard with tan sandy matrix, dry, light gray.					3485	
10								3480	
15								3475	
20								3470	
25			Similar to above (STA), hard.					3465	
30			STA, very hard, light gray to white.					3460	
35								3455	
40								3450	
45								3445	
45		GW	Sandy GRAVEL, poorly sorted, loose, dry. Gravel is sub-rounded and various colored. Tan sandy matrix.					3445	
50								3440	
52.5			CLAYSTONE (52.5'), stiff, dry, maroon with thin gray banding.					3435	
54.5			TD = 54.5'					3435	

CJL BORING LOG WITH WELL WCS 03047.05 2008.GPJ CJL LOG WITH WELL.GDT 08/11/05

PROJECT: Waste Control Specialists LLC LOCATION: Andrews County, TX				WELL / BORING NO: <div style="font-size: 1.2em; font-weight: bold;">TP-66</div>			
DATE: 1/10/2008 DRILLING COMPANY: Talon LPE DRILLING EQUIPMENT: Reichdrill T-650-WII DRILLING METHOD: Air Rotary				NORTHING: 6876728.3713 EASTING: 564210.1596 ELEVATION: 3485.4' TOTAL DEPTH: 54.9' LOGGED BY: David Lawler			

DEPTH (ft)	SYMBOL	USCS	STRATUM DESCRIPTION	SAMPLE	REC %	BLOW COUNTS	OVA (PPM)	ELEV (ft)	WELL CONSTRUCTION
		ML	Sandy SILT, dry.					3485	<div style="text-align: right; padding-right: 10px;"> TOC ELEV: 3488.66' Cement/Bentonite Slurry 2-Inch Diameter PVC Bentonite Chips Sand 2-Inch Diameter PVC Screen Well End Cap </div>
5			CALICHE, moderately hard with orange to red sandy matrix, dry, light gray.					3480	
10								3475	
15								3470	
20								3465	
25								3460	
30			Similar to above (STA), very hard, dry, light gray to white.					3455	
35								3450	
40								3445	
45		SW	Gravelly SAND, dry, with fossils. Gravel is various sized and various colored. Sand is tan.					3440	
50								3435	
55			CLAYSTONE (51.0'), stiff, dry, gray. STA, maroon at 52'.					3430	
			TD = 54.9'						

C/J BORING LOG WITH WELL WCS 03047.05 2008.GPJ C/J LOG WITH WELL.GDT 08/11/08

PROJECT: Waste Control Specialists LLC				WELL / BORING NO:					
LOCATION: Andrews County, TX				TP-76					
DATE: 2/7/2008				NORTHING: 6877359.4945					
DRILLING COMPANY: Talon LPE				EASTING: 561121.9423					
DRILLING EQUIPMENT: Reichdrill T-650-WII				ELEVATION: 3487.1'					
DRILLING METHOD: Air Rotary				TOTAL DEPTH: 50.3'					
				LOGGED BY: David Lawler					
DEPTH (ft)	SYMBOL	USCS	STRATUM DESCRIPTION	SAMPLE	REC %	BLOW COUNTS	OVA (PPM)	ELEV (ft)	WELL CONSTRUCTION
5		SM	Silty SAND, loose, dry, brown to light brown.					3485	<p>TOC ELEV: 3490.20'</p> <p>Cement/Bentonite Slurry</p> <p>2-Inch Diameter PVC</p> <p>Bentonite Chips</p> <p>Sand</p> <p>2-Inch Diameter PVC Screen</p> <p>Well End Cap</p>
10			CALICHE, moderately hard, dry, light gray to tan with tan sandy matrix.					3480	
15								3475	
20								3470	
25								3465	
30			Similar to above (STA), hard, dry, light gray to white, pisolitic.					3460	
35			STA, very hard, dry, light gray to white.					3455	
40								3450	
45		GW	Sandy GRAVEL, well graded, well cemented grading to loose, dry, various colored gravel. Gravel is fine to medium and is sub-rounded. Sand is tan to pink.					3445	
50			CLAYSTONE (47.1'), stiff, dry, maroon.					3440	
			TD = 50.3'					3435	

CJII BORING LOG WITH WELL WCS 03047.05 2008 GPJ CJII LOG WITH WELL GDT 08/17

PROJECT: Waste Control Specialists LLC
LOCATION: Andrews County, TX

WELL / BORING NO:

TP-77

DATE: 2/7/2008

NORTHING: 6876582.6779

DRILLING COMPANY: Talon LPE

EASTING: 562237.5058

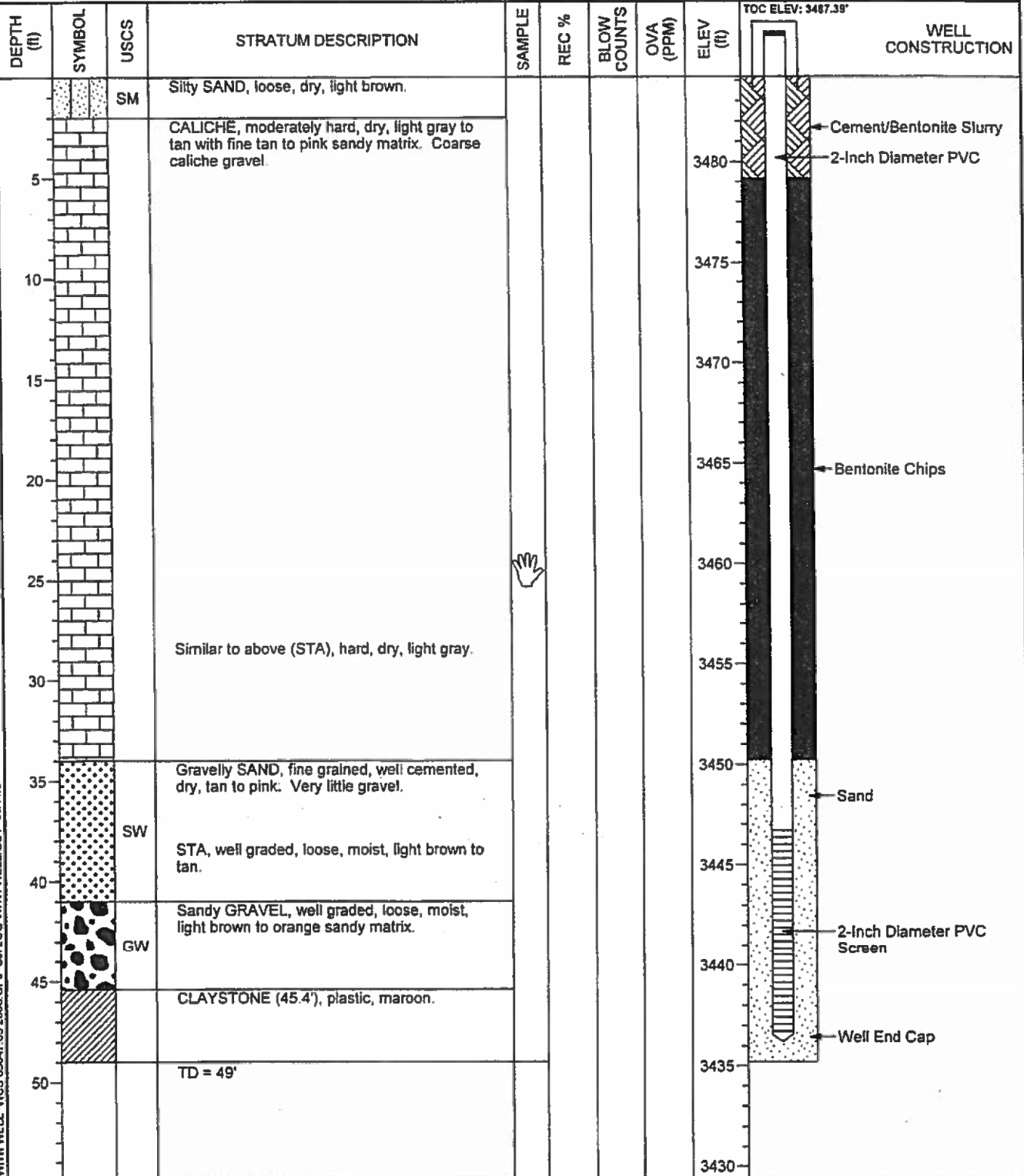
DRILLING EQUIPMENT: Reichdrill T-650-WII

ELEVATION: 3484.2'

DRILLING METHOD: Air Rotary

TOTAL DEPTH: 49'

LOGGED BY: David Lawler



CJL BORING LOG WITH WELL WCS 03047.05 2008.GPJ CJL LOG WITH WELL GOT 08/11/08

COOK-JOYCE INC.
ENGINEERING AND CONSULTING
812 WEST ELEVENTH
AUSTIN, TEXAS 78701-2000
15121 474-9097 FAX 15121 474-8463

PROJECT NO. 03047.05

This boring log should not be used
separately from the original report.

PAGE 1 OF 1

PROJECT: Waste Control Specialists LLC LOCATION: Andrews County, TX				WELL / BORING NO: <div style="font-size: 1.2em; font-weight: bold;">TP-83</div>			
DATE: 2/11/2008 DRILLING COMPANY: Talon LPE DRILLING EQUIPMENT: Reichdrill T-650-WII DRILLING METHOD: Air Rotary				NORTHING: 6876337.3258 EASTING: 562910.9839 ELEVATION: 3487.8' TOTAL DEPTH: 52.5'			
				LOGGED BY: David Lawler			

DEPTH (ft)	SYMBOL	USCS	STRATUM DESCRIPTION	SAMPLE	REC %	BLOW COUNTS	OVA (PPM)	ELEV (ft)	WELL CONSTRUCTION
0		SM	Silty SAND, loose, dry, light brown. CALICHE, moderately hard; dry, light gray with tan sandy matrix.					3485	<div style="border: 1px solid black; padding: 2px;"> Cement/Bentonite Slurry 2-Inch Diameter PVC </div>
5								3480	
10		SP	SAND, well sorted, loose, dry, light brown to orange.					3475	
15			CALICHE, moderately hard, dry, light gray with a tan sandy matrix.					3470	
20								3465	Bentonite Chips
25								3460	
30			Similar to above, very hard, dry, light gray to white.					3455	
35								3450	
40								3445	Sand
45		SW	Gravelly SAND, fine grained, very well cemented, dry, tan to pink. Gravel is fine, angular, and various colored.					3440	2-Inch Diameter PVC Screen
50			CLAYSTONE (49.8'), stiff, maroon with gray mottling.					3435	Well End Cap
52.5			TD = 52.5'					3430	

C/J BORING LOG WITH WELL - WCS 03047 05 2008.GPJ C/J LOG WITH WELL.GDT 08/11/08

CJH BOBING LOG WITH WELL WCS 03047.05 2008.GPJ CJ LOG WITH WELL GDT 08/11/17

PROJECT: Waste Control Specialists LLC				WELL / BORING NO:			
LOCATION: Andrews County, TX				TP-87			
DATE: 3/15/2008				NORTHING: 6877040.5809			
DRILLING COMPANY: Talon LPE				EASTING: 561611.0739			
DRILLING EQUIPMENT: Reichdrill T-650-WII				ELEVATION: 3484.2'			
DRILLING METHOD: Air Rotary				TOTAL DEPTH: 46.5' LOGGED BY: Ed Hughes			

DEPTH (ft)	SYMBOL	USCS	STRATUM DESCRIPTION	SAMPLE	REC %	BLOW COUNTS	OVA (PPM)	ELEV (ft)	WELL CONSTRUCTION
0		ML	SILT, dry, brown.					3487.49'	TOC ELEV: 3487.49'
5			CALICHE, relatively soft, dry, light gray to pink.					3480	Cement/Bentonite Slurry 2-Inch Diameter PVC
10								3475	
15								3470	
20								3465	Bentonite Chips
25			Similar to above (STA), very hard, dry, light gray.					3460	
30								3455	
35			Gravelly SAND, well cemented, hard, dry, chert gravel.					3450	Sand
40		SW	STA, not as hard from 41' to 43.3'.					3445	2-Inch Diameter PVC Screen
45			CLAYSTONE (43.3'), dry, maroon.					3440	Well End Cap
			TD = 46.5'					3435	

CJL BORING LOG WITH WELL VCS 03047.05 2008.GPJ CJL LOG WITH WELL GDT 08/11/07

COOK-JOYCE INC.
ENGINEERING AND CONSULTING
812 WEST ELEVENTH
AUSTIN, TEXAS 78701-2000
5121 474-8097 FAX 5121 474-8463

This boring log should not be used separately from the original report.

PROJECT NO. 03047.05

PAGE 1 OF 1

PROJECT: Waste Control Specialists LLC LOCATION: Andrews County, TX				WELL / BORING NO: <div style="font-size: 1.2em; font-weight: bold;">TP-136</div>			
DATE: 3/17/2009 DRILLING COMPANY: Talon LPE DRILLING EQUIPMENT: Reich Drill T-650-WII DRILLING METHOD: Air Rotary				NORTHING: 6876252.323 EASTING: 563381.4964 ELEVATION: 3490.2' TOTAL DEPTH: 52.2' LOGGED BY: Van Volkenburg			

DEPTH (ft)	SYMBOL	USCS	STRATUM DESCRIPTION	SAMPLE	REC %	BLOW COUNTS	OVA (PPM)	ELEV (ft)	WELL CONSTRUCTION
		ML	SILT with caliche pieces, moist, brown. CALICHE, relatively soft, orange sand matrix, slight cementation, moist.					3485	<div style="text-align: right;"> TOC ELEV: 3493.22' Cement/Bentonite Slurry 2-Inch Diameter PVC </div>
5								3480	
10								3475	
15								3470	
20			Similar to above (STA), harder, some burnt orange sand.					3465	Bentonite Chips
25			STA, CAPROCK, very hard between 25' and 30', dry.					3460	
30								3455	
35								3450	
40								3445	
45			Gravelly SAND, abundant chert, dry, white.					3440	Sand
50		SW	CLAYSTONE (50.5'), hard, dry, red.					3435	2-Inch Diameter Slotted PVC
52.2			TD = 52.2'						Well End Cap

CJI BORING LOG WITH WELL WCS 03047.08 BL MARCH TO APRIL 09 GPJ CJI LOG WITH WELL GDT 0911/30

PROJECT: Waste Control Specialists LLC				WELL / BORING NO: TP-137			
LOCATION: Andrews County, TX							
DATE: 3/17/2009				NORTHING: 6876274.76			
DRILLING COMPANY: Talon LPE				EASTING: 564031.6267			
DRILLING EQUIPMENT: Reich Drill T-650-WII				ELEVATION: 3488.0'			
DRILLING METHOD: Air Rotary				TOTAL DEPTH: 53.3' LOGGED BY: Hughes/Van Volkenburg			

DEPTH (ft)	SYMBOL	USCS	STRATUM DESCRIPTION	SAMPLE	REC %	BLOW COUNTS	OVA (PPM)	ELEV (ft)	WELL CONSTRUCTION
		ML	SILT, dry, brown.						
			CALICHE, relatively soft, dry, tan to pink.						
5								3485	Cement/Bentonite Slurry 2-Inch Diameter PVC
10								3480	
15			Similar to above (STA), abundant sand, some cementation, caliche nodules, dry, burnt orange.					3475	
20								3470	Bentonite Chips
25								3465	
30			STA, relatively soft, dry, tan to pink.					3460	
35								3455	
40			CAPROCK, very hard, dry, white to gray.					3450	Sand
45								3445	
50		SW	Gravelly SAND, hard, abundant chert, dry, tan to light orange sand.					3440	2-Inch Diameter Slotted PVC
55			CLAYSTONE (51.5'), hard, dry, maroon.					3435	Well End Cap
			TD = 53.3'					3430	

CJL BORING LOG WITH WELL WCS 03047 08 BL MARCH TO APRIL 09 GPJ CJL LOG WITH WELL GDT 09/11/20