

**Titus Oil & Gas Production**

420 Throckmorton Street, Suite 1150  
Fort Worth, TX 76102  
(817) 852-6358

December 4, 2020

**Via Certified Mail**

Affected Parties of the Egg Roll Development Area  
(as attached hereto)

Designation of Development Area  
Egg Roll Development Area  
T20S-R32E, Sections 12 & 13  
Lea County, NM

Ladies and Gentlemen:

Titus Oil & Gas Production, LLC ("Titus") has proposed the Egg Roll Development Area in the Secretary's Potash Area that may affect your leasehold in the subject lands. Titus plans to develop multiple zones in the Bone Spring and Wolfcamp formations from the Tetris Anise Drilling Islands with lateral lengths of two miles. Please see the attached map for an outline of the Development Area along with the initial wellbores.

This letter serves as notice of the proposed actions. You have thirty (30) calendar days from receipt of this letter to contact the BLM if you would like to express interest in collaborating with the proposal or protesting the proposal. Should you wish to collaborate with or protest the establishment of the Development Area, please respond to Jim Rutley (jrutley@blm.gov) at the BLM, Carlsbad Field Office, 620 E Greene Street, Carlsbad, NM 88220.

Please be aware that once the Development Area has been established it could affect your operating rights/available drilling locations; your timely participation in this process is required. If you have any questions or concerns, you can also reach me at (817) 852-6755 or jmcbroom@titusoil.com

Sincerely,



John McBroom

cc: BLM Carlsbad Field Office

**Bureau of Land Management  
RECEIVED**

**DEC 09 2020**

**Carlsbad Field Office  
Carlsbad, NM**

USPS Certified Mail: 7018 1830 0001 3776 8864

<b><u>Egg Roll Development Area Interested Parties</u></b>	
GROSS FAMILY LTD	JM HAAS
TRAINER PARTNERS LTD	TED JAMES
WHITING 1988 PROD	HUNKER FAMILY LTD PARTNERSHIP
FASKEN BARBARA	SLATER FAMILY MINERALS, LLC
FASKEN LAND MINERALS LTD	MARK NEARBURG
OXY Y-1 COMPANY	TOM BEALL
EOG RESOURCES INC	TARA N. FEDRIC, TRUSTEE
ANADARKO E&P ONSHORE LLC	MARATHON OIL PERMIAN, LLC
BP AMERICA PRODUCTION CO	MANZANO ENERGY PARTNERS
OXY USA INC	XTO DELAWARE BASIN LLC
SHARBRO ENERGY LLC	RAYMONA MCADAMS
YATES DRILLING COMPANY	JAMES MCADAMS
COG OPERATING, LLC	AGUA SUCIA, LLC
CHISHOLM ENERGY HOLDINGS, LLC	DEVON ENERGY CO., LP
CENTENNIAL, LLC	BUREAU OF LAND MANAGEMENT
RALPH MCELVAIN	STATE OF NEW MEXICO
ELROY DURAN	THE MOSAIC COMPANY
NORTON, LLC	INTREPID POTASH
KEITH MOORE	

19S 32E

19S 33E

33

34

35

36

31

32

33

04

03

02

01

06

05

04

Marathon,  
et al  
EOG, et alMarathon,  
et al  
EOG, et al

Devon

Egg Roll 13-12 Fed 431H  
(Wolfcamp)Egg Roll 13-12 Fed 432H  
(Wolfcamp)

09

10

11

Oxy

12

EOG, et al

07

Marathon,  
et al

08

09

20S 32E

20S 33E

16

15

14

EOG, et al

13

Titus, et al

18

XTO

17

16

XTO

Egg Roll 13-12 Fed 221H  
(Bone Spring)Egg Roll 13-12 Fed 222H  
(Bone Spring)Titus / Fasken,  
et al

Titus

EOG

21

22

23

24

19

20

21

28

27

26

25

30

29

28

33

34

35

36

31

32

33



## Legend

-  West Egg Roll Development Area
-  West Egg Roll Notification Area
-  Federal Acreage
-  Fee Acreage
-  State Acreage

## West Egg Roll Development Area

# TITUS

OIL GAS LLC

Lea County, New Mexico



## United States Department of the Interior

BUREAU OF LAND MANAGEMENT

Pecos District

Carlsbad Field Office

620 E. Greene

Carlsbad, New Mexico 88220-6292

[www.blm.gov/nm](http://www.blm.gov/nm)



NOTICE TO LESSEES  
Secretarial Order No. 3324

August 2, 2021

Re: Designation of the Pakse West Development Area  
West Half Section 24, 25 and 36 North West Quarter, T20S, R32E  
Lea County, New Mexico  
Approval of Development Area

Dear Sir/Madam:

The Pakse West Development Area, Lea County, New Mexico, is approved and effective as of February 2, 2021, in accordance with Secretarial Order No. 3324 – Oil, Gas, and Potash Leasing and Development within the Designated Potash Area of Eddy and Lea Counties, New Mexico (“2012 Secretarial Order”). This Development Area has been assigned No. DA-2021-002. The Development Area is established for all formations and comprises 800.00 acres, more or less.

Future drilling on lands under an oil and gas lease within this Development Area will occur, under most circumstances, from a Barren Area or a Drilling Island within the Development Area. Future drilling on lands under an oil and gas lease within this Development Area will be managed under a unit or communitization agreement, generally by a single operator, consistent with BLM regulations and the 2012 Secretarial Order. The Drilling Island associated with this Development Area is approved. The proposed Drilling Island is as follows:

- **Tetris Anise Drilling Island** -- The BLM has field-verified this Drilling Island, affected potash companies have not objected to this Drilling Island proposal, and approval is contingent upon NEPA review.

A map of the Development Area and approved Drilling Islands is included in this Notice to Lessees.

Approval of this Development Area does not grant the right to engage in surface disturbing activities or drill a well.

Sincerely,



Cody Layton  
Assistant Field Manager

Enclosures

cc: New Mexico State Land Office  
New Mexico Oil Conservation Division



# Titus Oil and Gas Production, LLC Pakse West Development Area

W2 Sections 24 & 25, NW4 Section 36 in T20S R32E




## Legend

-  Pakse West Drill Pads on Tetris Anise Drilling Island
-  Approved Pakse West Development Area

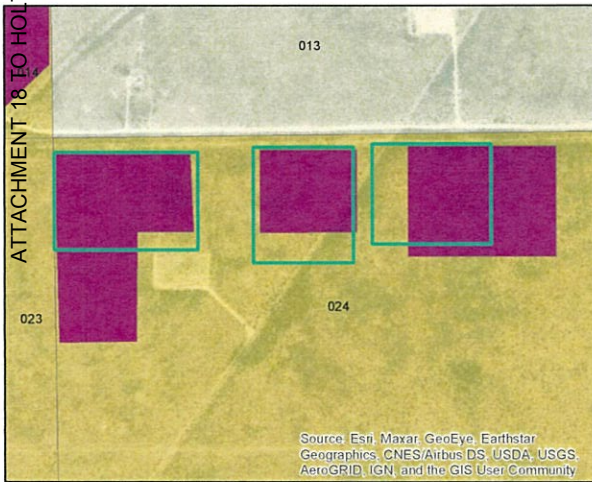
## Drill Islands

-  Approved, All Depths
-  Nominated, All Depths

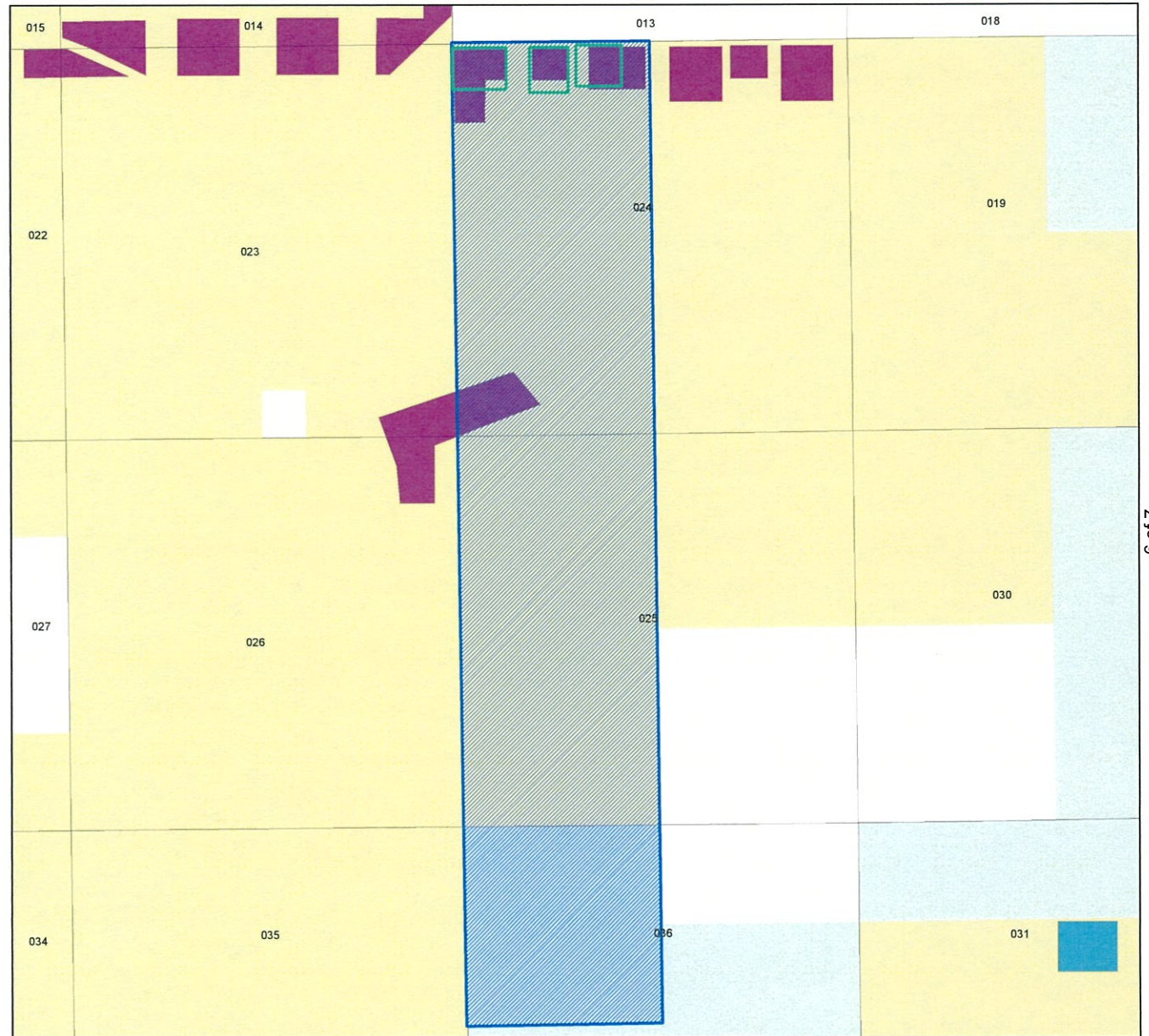
## BLM Surface Ownership

-  Bureau of Land Management
-  Private
-  State

0 0.25 0.5 1 Miles



No warranty is made by the Bureau of Land Management as to the accuracy, reliability, or completeness of these data for individual use or aggregate use with other data, or for purposes not intended by BLM. Spatial information may not meet National Map Accuracy Standards. This information may be updated without notification. Map created 07/23/2021



**LINE TABLE A**  
EASEMENT CENTERLINE  
BEARINGS AND DISTANCES TABLE

LINE	BEARING	DISTANCE
L1	S 54°53'27" E	303.33'
L2	N 89°41'37" E	538.48'
L3	N 81°13'07" E	284.74'
L4	N 89°26'46" E	2533.78'

**LINE TABLE B**  
EASEMENT CENTERLINE  
BEARINGS AND DISTANCES TABLE

LINE	BEARING	DISTANCE
L5	S 89°48'31" W	30.00'
L6	S 00°1'31" E	479.99'

**LINE TABLE C**  
EASEMENT CENTERLINE  
BEARINGS AND DISTANCES TABLE

LINE	BEARING	DISTANCE
L7	S 00°03'01" W	56.34'

**LINE TABLE D**  
EASEMENT CENTERLINE  
BEARINGS AND DISTANCES TABLE

LINE	BEARING	DISTANCE
L8	S 00°18'25" E	60.00'

**LINE TABLE E**  
EASEMENT CENTERLINE  
BEARINGS AND DISTANCES TABLE

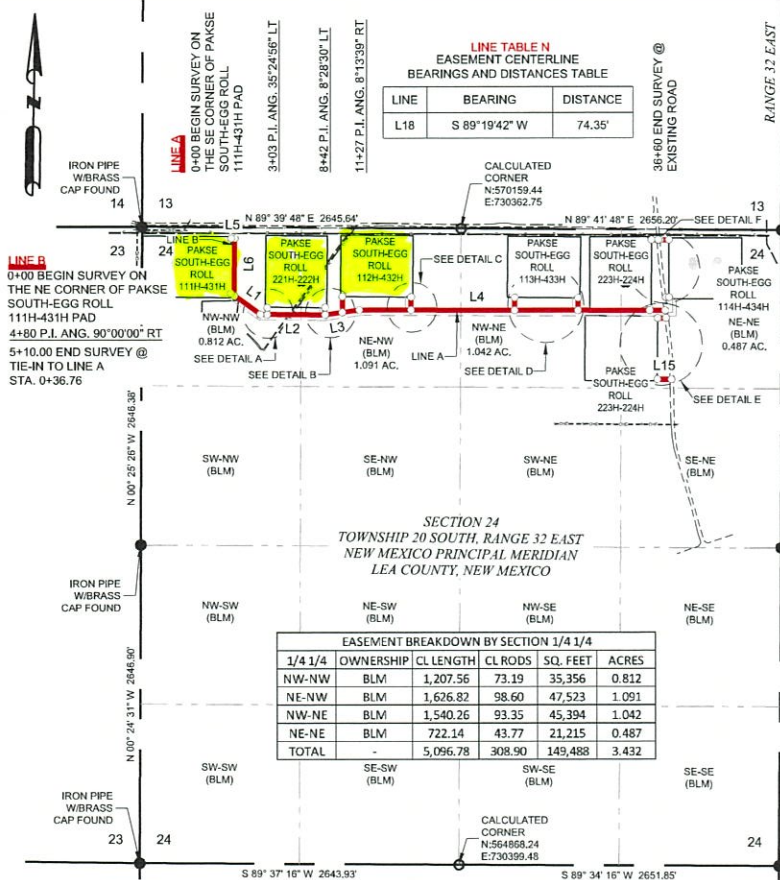
LINE	BEARING	DISTANCE
L9	S 00°23'16" E	131.65'

**LINE TABLE F**  
EASEMENT CENTERLINE  
BEARINGS AND DISTANCES TABLE

LINE	BEARING	DISTANCE
L10	S 00°30'56" E	109.47'

**LINE TABLE G**  
EASEMENT CENTERLINE  
BEARINGS AND DISTANCES TABLE

LINE	BEARING	DISTANCE
L11	S 00°33'16" E	106.90'

SECTION 24  
TOWNSHIP 20 SOUTH, RANGE 32 EAST  
NEW MEXICO PRINCIPAL MERIDIAN  
LEA COUNTY, NEW MEXICO

1/4 1/4	OWNERSHIP	CL LENGTH	CL RODS	SQ. FEET	ACRES
NW-NW	BLM	1,207.56	73.19	35,356	0.812
NE-NW	BLM	1,626.82	98.60	47,523	1.091
NW-NE	BLM	1,540.26	93.35	45,394	1.042
NE-NE	BLM	722.14	43.77	21,215	0.487
TOTAL	-	5,096.78	308.90	149,488	3.432

**LINE TABLE H**  
EASEMENT CENTERLINE  
BEARINGS AND DISTANCES TABLE

LINE	BEARING	DISTANCE
L12	S 00°16'24" E	104.32'

**LINE TABLE I**  
EASEMENT CENTERLINE  
BEARINGS AND DISTANCES TABLE

LINE	BEARING	DISTANCE
L13	S 00°33'14" E	15.00'

**LINE TABLE J**  
EASEMENT CENTERLINE  
BEARINGS AND DISTANCES TABLE

LINE	BEARING	DISTANCE
L14	N 89°44'59" E	69.06'

**LINE TABLE K**  
EASEMENT CENTERLINE  
BEARINGS AND DISTANCES TABLE

LINE	BEARING	DISTANCE
L15	N 89°41'16" E	117.18'

**LINE TABLE L**  
EASEMENT CENTERLINE  
BEARINGS AND DISTANCES TABLE

LINE	BEARING	DISTANCE
L16	N 89°19'42" E	26.84'



I, GARRETT J. SMELKER, NEW MEXICO PROFESSIONAL LAND SURVEYOR, DO HEREBY CERTIFY THAT I CONDUCTED AND AM RESPONSIBLE FOR THIS SURVEY. THAT THIS SURVEY IS TRUE AND CORRECT TO THE BEST OF MY KNOWLEDGE AND BELIEF, AND THAT THIS SURVEY AND PLAT MEET THE MINIMUM STANDARDS FOR SURVEYING IN NEW MEXICO.

GARRETT J. SMELKER, NM PS #25036

**LEGEND**

● EASEMENT CENTERLINE  
○ FOUND MONUMENT  
○ CALCULATED CORNER

PROJECT NO. 20-01724

**PROPOSED LEASE ROADS**  
**PAKSE SOUTH - EGG ROLL DEVELOPMENT**SITUATED IN  
SECTION 24, TOWNSHIP 20 SOUTH, RANGE 32 EAST  
NEW MEXICO PRINCIPAL MERIDIAN  
EDDY COUNTY, NEW MEXICO

DRAWN BY: MMP	DATE: 10/19/20	DWG. NO. 20-01724 PAKSE SOUTH-EGG ROLL LEASE ROADS OVERALL	REV. 0
CHECKED BY: GS	DATE: 10/19/20		
SCALE: 1"=1000'	PAGE: 1 OF 1		



TBPELS FIR# 10193740  
1100 Macon Street  
Fort Worth, Texas 76102  
(817) 529-1180 ~ Fax (817) 529-1181

**DESCRIPTION:**

SURVEY FOR A STRIP OF LAND 30.0 FEET WIDE AND 5,096.78 FEET, 308.90 RODS OR 0.965 MILES IN LENGTH CROSSING BLM LAND IN SECTION 24, TOWNSHIP 20 SOUTH, RANGE 32 EAST, N.M.P.M., EDDY COUNTY, NEW MEXICO, AND BEING 15.0 FEET LEFT AND 15.0 FEET RIGHT OF THE ABOVE PLATTED CENTERLINE SURVEY.



**TITUS**  
OIL GAS