



**Savannah River  
Remediation**

AMENTUM | BECHTEL | JACOBS | BWXT

August 2021

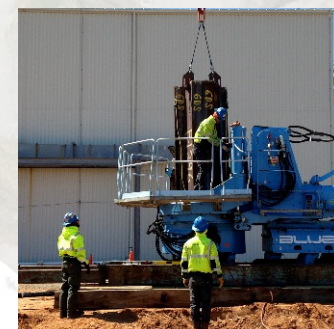
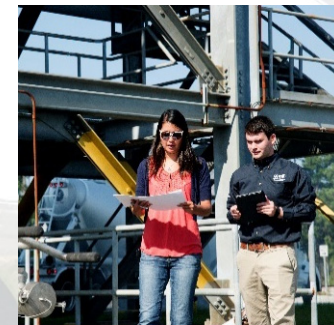
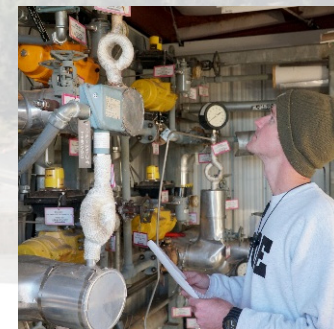
# SDU 9 Construction Progress

**F. M. Smith**

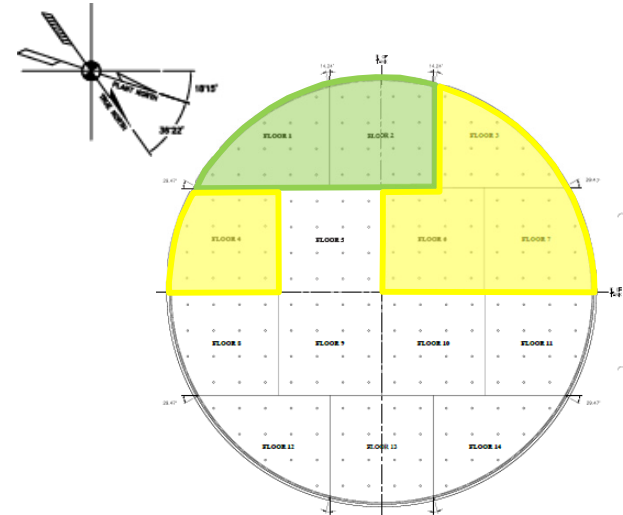
Waste Disposal Authority

SRR-CWDA-2021-00063, Rev. 0

*Safety SRR Integrity SRR Ownership SRR Teamwork SRR Continuous Improvement*



# Current Project Status



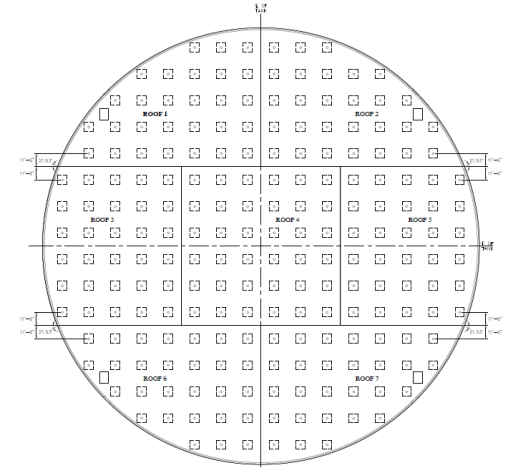
Floor Layout

### Floor Sections

| Total | Complete |
|-------|----------|
| 14    | 2        |

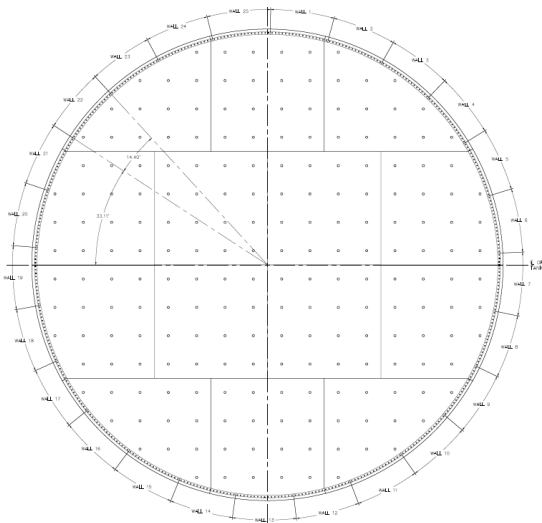
### Roof Sections

| Total | Complete |
|-------|----------|
| 7     | 0        |



Roof Layout

Complete  
 In-Progress



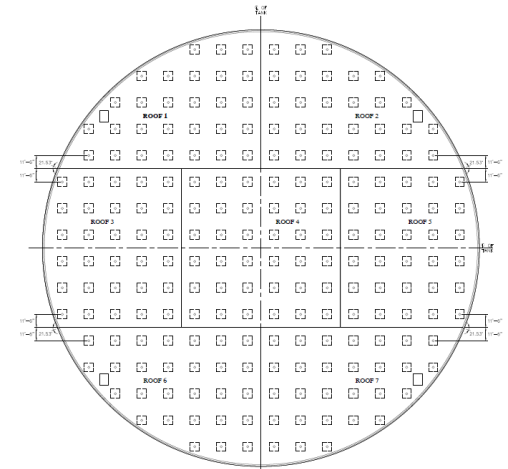
Wall Layout

### Walls Sections

| Total | Complete |
|-------|----------|
| 25    | 0        |

### Columns

| Total | Complete |
|-------|----------|
| 208   | 0        |



Column Layout

# NRC Requested Photos

- Photos of the ground on which the concrete Lower Mud Mat will be poured<sup>1</sup>
- Photos of different scale of the top of the concrete Lower Mud Mat after it has been poured. One or two photos as the Lower Mud Mat is being poured<sup>1</sup>
- Photos of different scale of the top of the Geosynthetic Clay Liner (GCL) after it has been fitted on top of the concrete Lower Mud Mat<sup>1</sup>
- Photos of different scale of the top of the HDPE layer after it has been fitted on top of the concrete Lower Mud Mat and after it has been seam-welded at several different distances/scales. One or two photos as HDPE is being installed, and one or two photos as the HDPE is being seam-welded<sup>1</sup>
- Photos at different scales of the HDPE ends embedded in the concrete floor<sup>1</sup>
- Photos at different scales of the top of the concrete Upper Mud Mat after it has been poured
- Photos at different scales of the top of the Concrete Floor, including one or two photos of the Bearing Pad and Construction Joints after the floor has been poured. One or two photos as the floor is being poured
- Photos at different scales of the two-foot concrete Round Column, including one or two of the Concrete Base after it has been emplaced
- Photos at different scales of the Concrete Wall before after the wall has been constructed and after the Concrete Wall has been treated/painted/insulated. One or two photos of the Concrete Wall as it is being placed on top of the Bearing Pad
- Photos at different scales of the bottom of the Concrete Roof, including one or two of the Bearing Pad before and after the roof has been fitted onto the concrete wall. One or two photos as the Concrete Roof as it is being placed on top of the Bearing Pad
- Photos at different scales of the top of the Concrete Roof, including one or two of the Construction Joints after the roof has been fitted

**Note 1:** Due to construction status at the time of the NRC request having already passed the early stages, photos of the pre-mud mat, mud mat, and HDPE may be limited if available at all.

# SDU 9 Excavation



9-EX-1

East side looking southwest



9-EX-3

East side looking northwest



9-EX-2



9-EX-4

# SDU 9 Excavation



Southeast corner looking northwest

# SDU 9 HDPE Installation



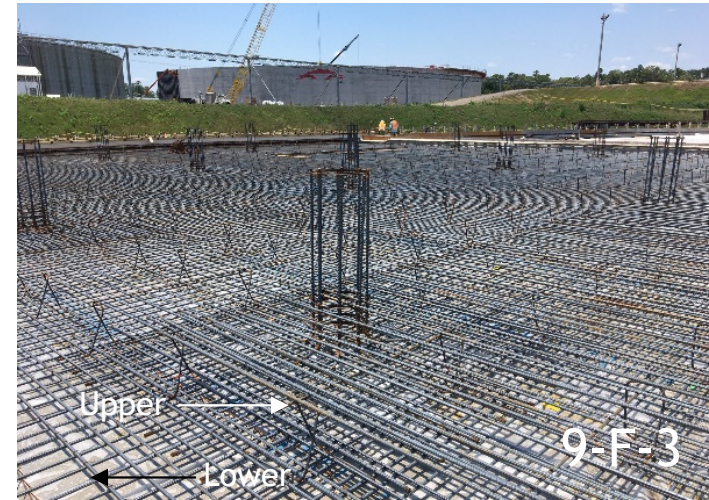
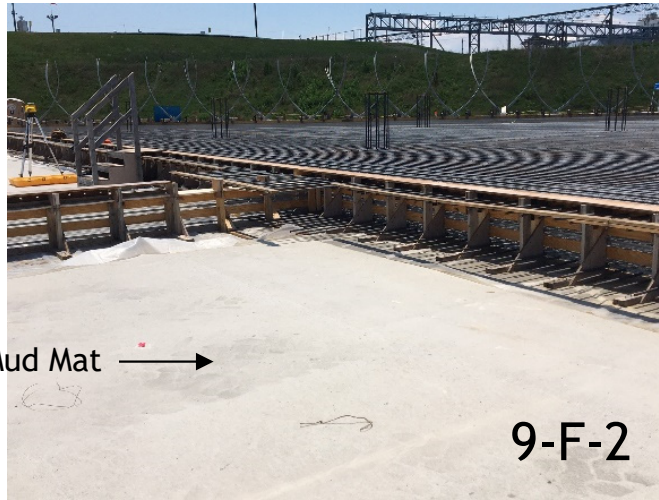
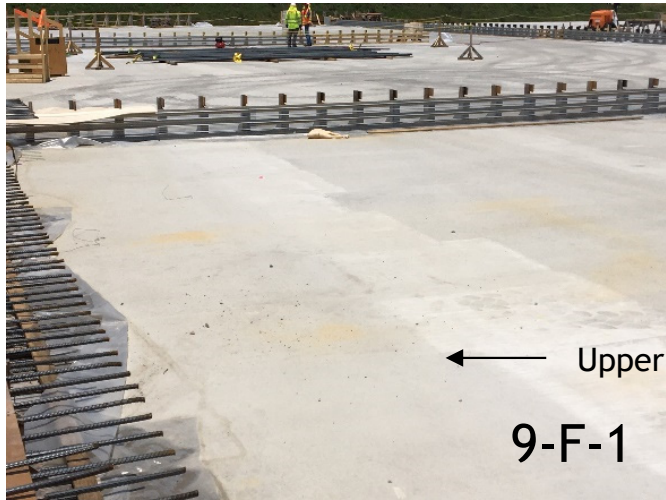
9-HDPE-1

# SDU 9 Upper Mud Mat



Northeast corner looking southwest

# SDU 9 Upper Mud Mat / Floor



Interior Floor Forms before Reinforcing Bar Installation

Lower and Upper Reinforcing Bar



Column Reinforcing Bar



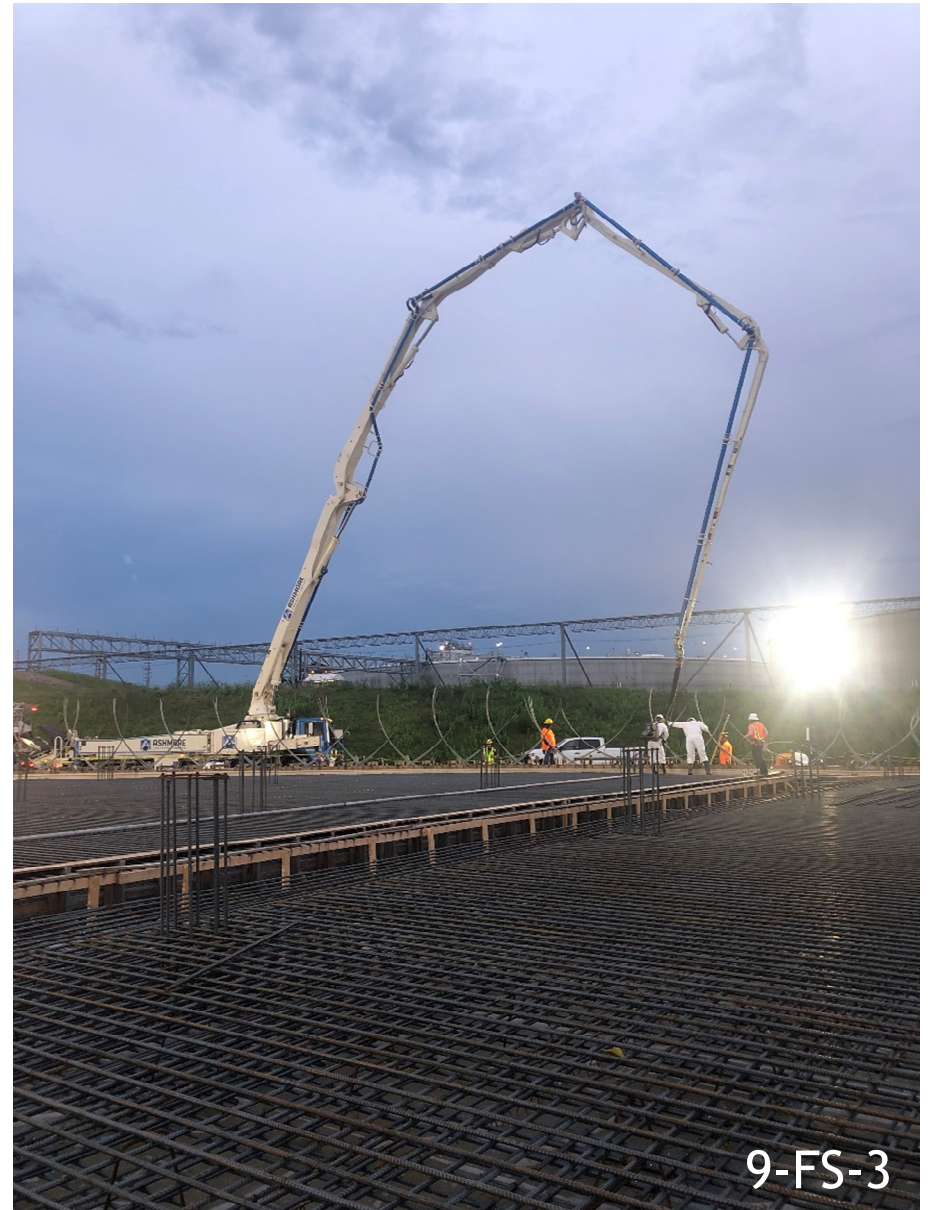
Exterior Floor Forming



Embedded Floor Water Stop



# SDU 9 First Floor Section Pour



- Photos at different scales of the top of the Concrete Floor, including one or two photos of the Bearing Pad and Construction Joints after the floor has been poured. One or two photos as the floor is being poured
  - Additional photos will be provided in a future revision
- Photos at different scales of the two-foot concrete Round Column, including one or two of the Concrete Base after it has been emplaced
- Photos at different scales of the Concrete Wall before after the wall has been constructed and after the Concrete Wall has be treated/painted/insulated. One or two photos of the Concrete Wall as it is being placed on top of the Bearing Pad
- Photos at different scales of the bottom of the Concrete Roof, including one or two of the Bearing Pad before and after the roof has been fitted onto the concrete wall. One or two photos as the Concrete Roof as it is being placed on top of the Bearing Pad
- Photos at different scales of the top of the Concrete Roof, including one or two of the Construction Joints after the roof has been fitted

**Note 1:** Additional photos will be provided in future revisions to this presentation.