



**Savannah River
Remediation**

AMENTUM | BECHTEL | JACOBS | BWXT

August 2021

SDU 8 Construction Progress

F. M. Smith

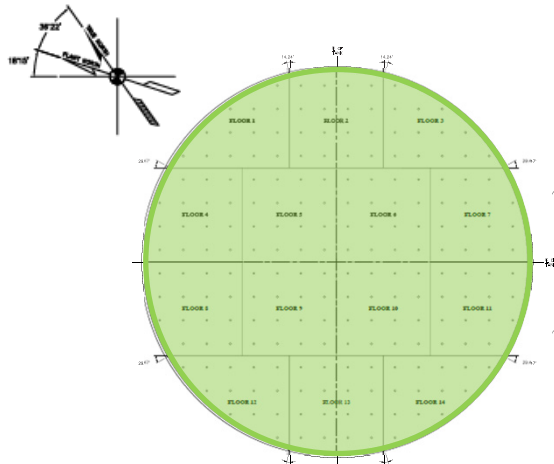
Waste Disposal Authority

SRR-CWDA-2021-00062, Rev. 0

Safety  *Integrity*  *Ownership*  *Teamwork*  *Continuous Improvement*



SDU 8 Current Project Status



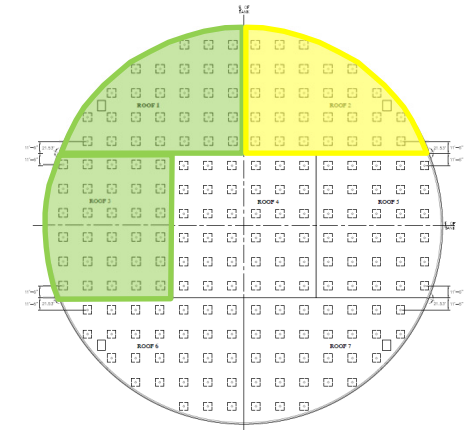
Floor Layout

Floor Sections

Total	Complete
14	14

Roof Sections

Total	Complete
7	2



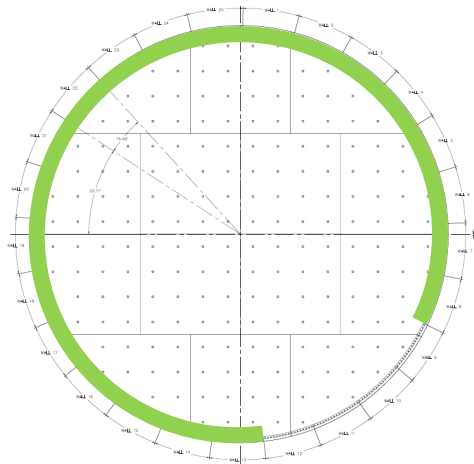
Roof Layout



Complete



In-Progress



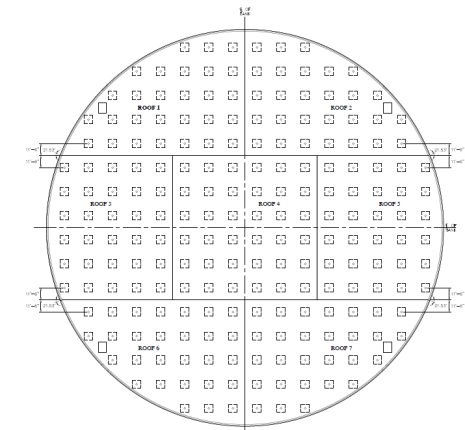
Wall Layout

Walls Sections

Total	Complete
25	21

Columns

Total	Complete
208	166



Column Layout

As Of: 7/31/21

NRC Requested Photos

- Photos of the ground on which the concrete Lower Mud Mat will be poured¹
- Photos of different scale of the top of the concrete Lower Mud Mat after it has been poured. One or two photos as the Lower Mud Mat is being poured¹
- Photos of different scale of the top of the Geosynthetic Clay Liner (GCL) after it has been fitted on top of the concrete Lower Mud Mat¹
- Photos of different scale of the top of the HDPE layer after it has been fitted on top of the concrete Lower Mud Mat and after it has been seam-welded at several different distances/scales. One or two photos as HDPE is being installed, and one or two photos as the HDPE is being seam-welded¹
- Photos at different scales of the HDPE ends embedded in the concrete floor¹
- Photos at different scales of the top of the concrete Upper Mud Mat after it has been poured¹
- Photos at different scales of the top of the Concrete Floor, including one or two photos of the Bearing Pad and Construction Joints after the floor has been poured. One or two photos as the floor is being poured
- Photos at different scales of the two-foot concrete Round Column, including one or two of the Concrete Base after it has been emplaced
- Photos at different scales of the Concrete Wall before after the wall has been constructed and after the Concrete Wall has been treated/painted/insulated. One or two photos of the Concrete Wall as it is being placed on top of the Bearing Pad
- Photos at different scales of the bottom of the Concrete Roof, including one or two of the Bearing Pad before and after the roof has been fitted onto the concrete wall. One or two photos as the Concrete Roof as it is being placed on top of the Bearing Pad
- Photos at different scales of the top of the Concrete Roof, including one or two of the Construction Joints after the roof has been fitted

Note 1: Due to construction status at the time of the NRC request having already passed the early stages, photos of the excavation, mud mats, and HDPE may be limited if available at all.

SDU 8 HDPE Installation

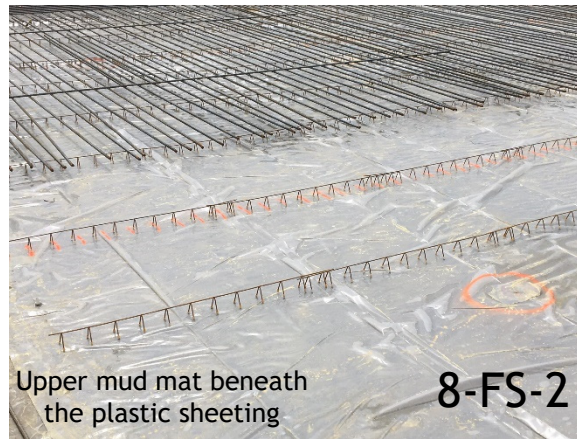


SDU 8 Floor Slab - Forms and Reinforcing Bar



8-FS-1

Form Work - Exterior



Upper mud mat beneath
the plastic sheeting

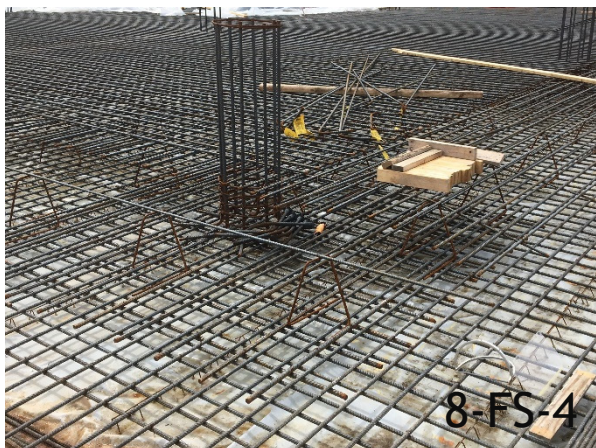
8-FS-2

Lower Rebar



8-FS-3

Form Work-Interior



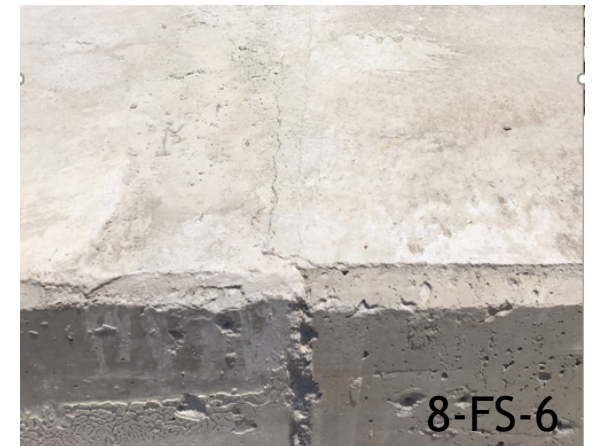
8-FS-4

Floor Rebar/Column Rebar



8-FS-5

Floor Section Ready
for Concrete



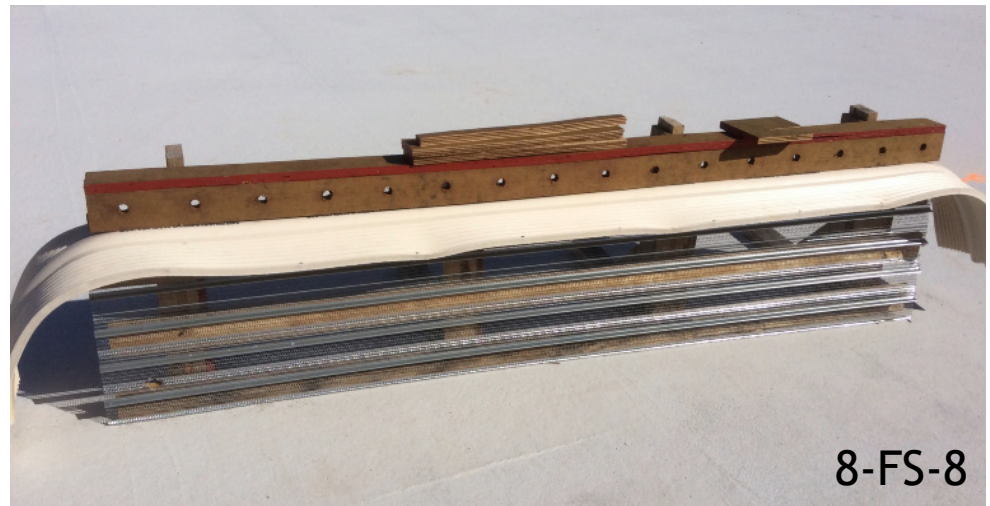
8-FS-6

Floor Joint

SDU 8 Floor Slab - Joint Details

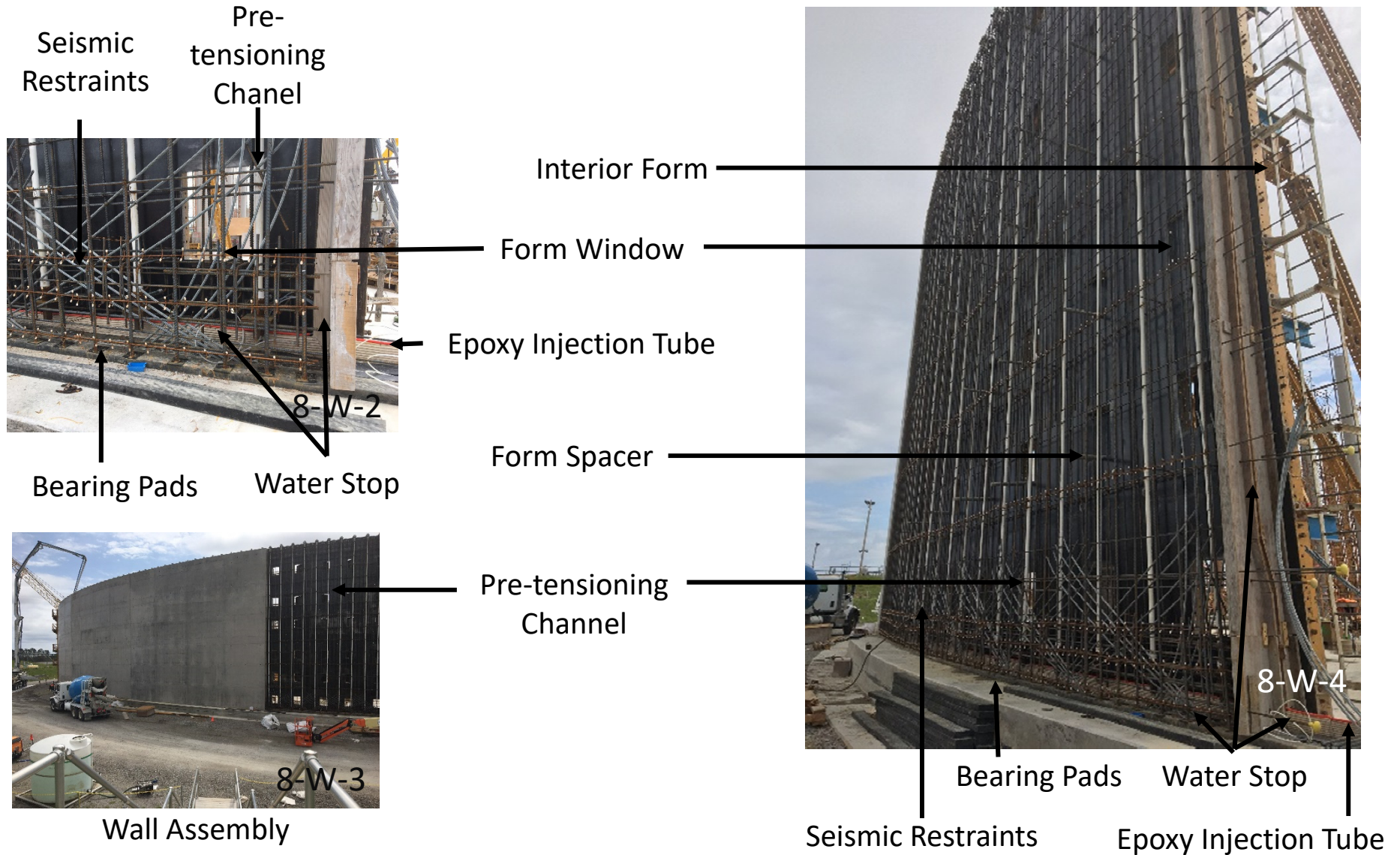


Floor Section with
Embedded Water stop

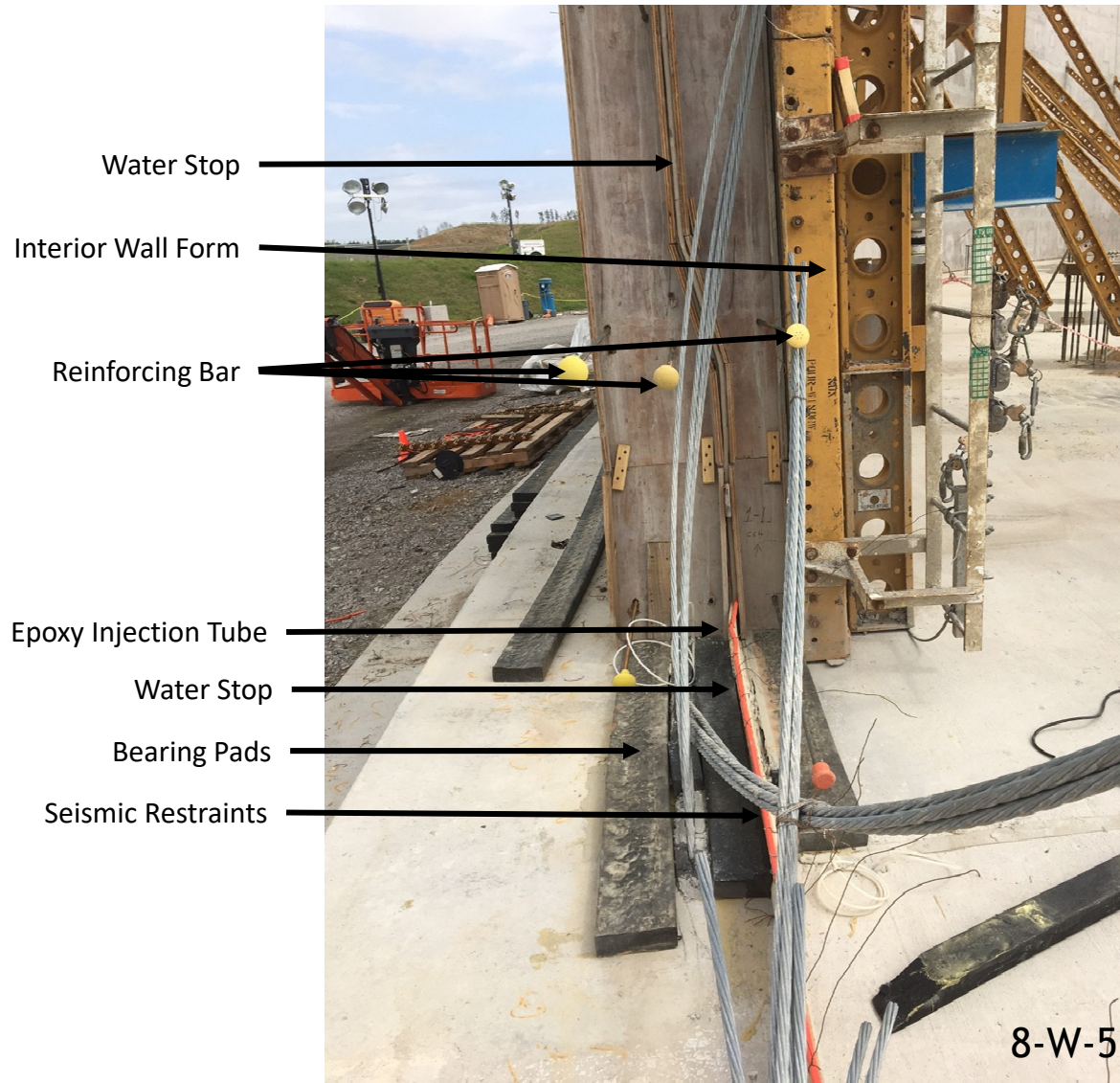


Prototype Form Section –
(Injection Tube Not Shown)

SDU 8 Walls - Assembly



SDU 8 Wall to Wall / Wall to Floor Joints



Wall Joint Details

SDU 8 Columns



Column Form

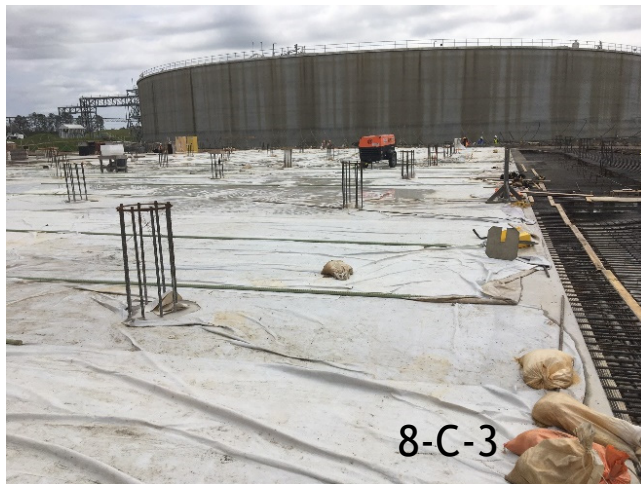
Column Rebar

8-C-1



8-F5-4

Floor/ Column Rebar



8-C-3

Column Rebar After Floor
Concrete Pour

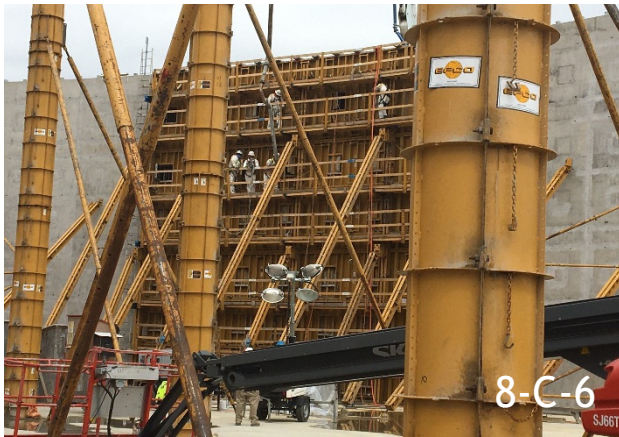


8-C-4



8-C-5

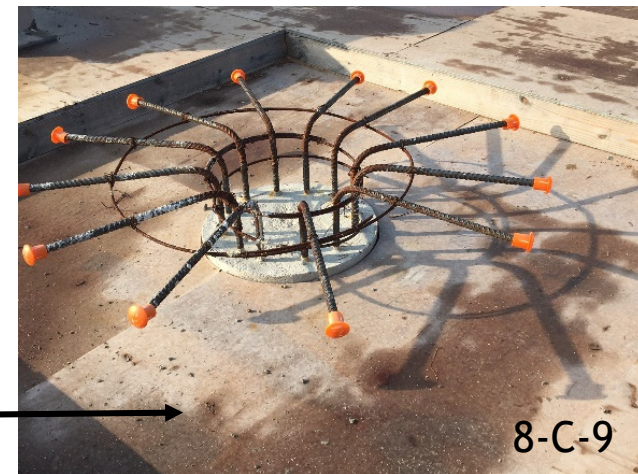
SDU 8 Columns



Column Forms



Completed Columns



Roof
Decking →

SDU 8 Roof



8-R-1



8-R-2

Roof Reinforcing Bar



8-R-3



8-R-4

Roof-Wall Joint



8-R-5

SDU 8 Roof Section 1 Concrete Pour



- Photos at different scales of the top of the Concrete Roof, including one or two of the Construction Joints after the roof has been fitted
 - *Additional photos of roof concrete after placement will be provided in a future revision*