

- C.I.P.S. CENTRAL ILLINOIS PUBLIC SERVICE COMPANY
- E.E.I. ELECTRIC ENERGY INC.
- I.P.C. ILLINOIS POWER COMPANY
- K.C.P.&L. KANSAS CITY POWER & LIGHT COMPANY
- I.I.G.&E. IOWA-ILLINOIS GAS & ELECTRIC COMPANY
- I.S.U. IOWA SOUTHERN UTILITIES
- M.P.S. MISSOURI PUBLIC SERVICE COMPANY
- A.E.C.I. ASSOCIATED ELEC. COOP. INC.
- ARK.-MO. A KANSAS-MISSOURI POWER COMPANY
- T.V.A. TENNESSEE VALLEY AUTHORITY
- S.P.A. SOUTHWESTERN POWER ADMINISTRATION
- C.E.C. CITIZENS ELECTRIC CORP.
- P.S.O. PUBLIC SERVICE COMPANY OF OKLAHOMA
- K.G.&E. KANSAS GAS & ELECTRIC COMPANY

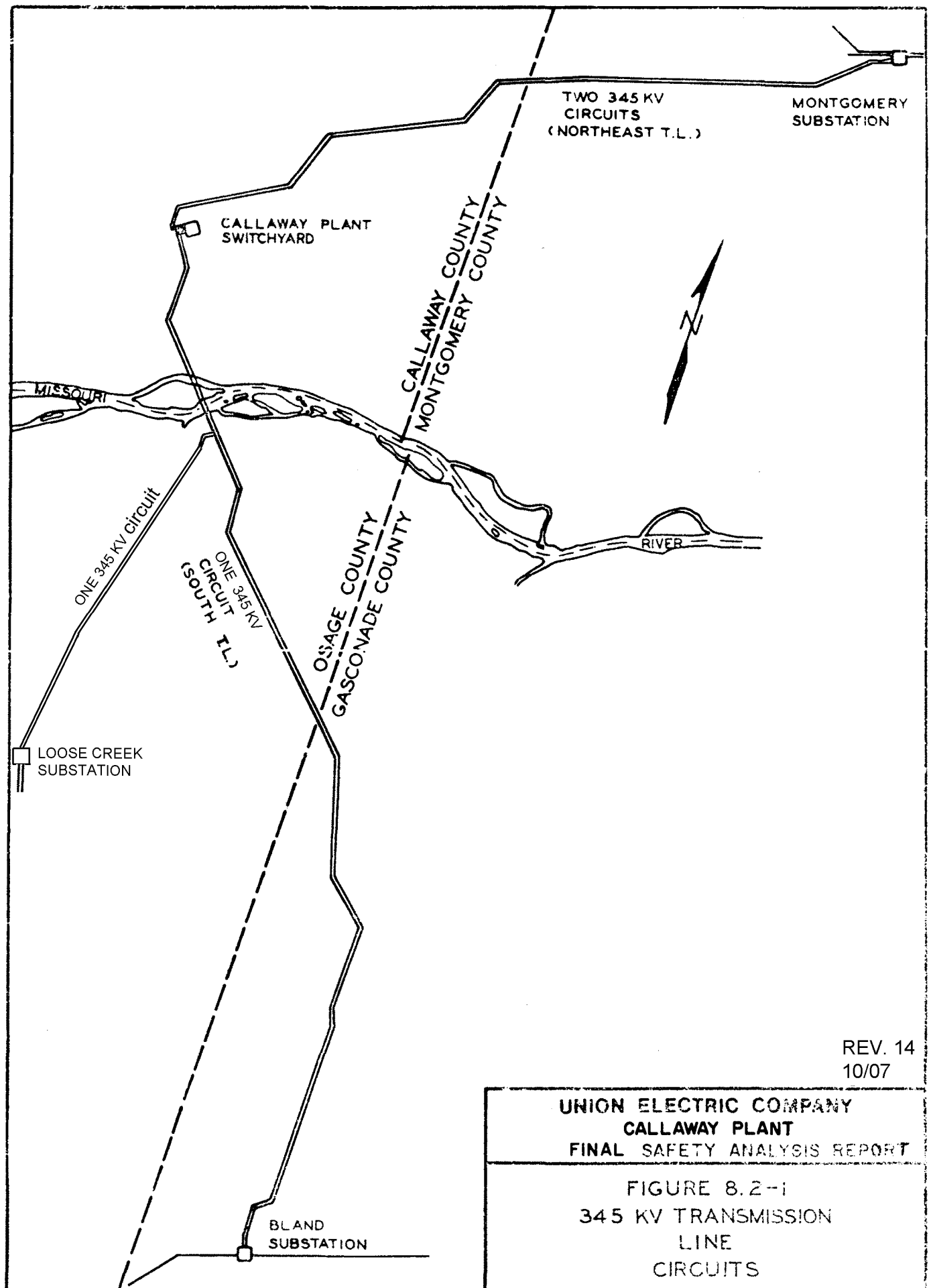
HISTORICAL INFORMATION

**UNION ELECTRIC COMPANY  
CALLAWAY PLANT  
FINAL SAFETY ANALYSIS REPORT**

**FIGURE 8.1-1  
SYSTEM MAP**

REV. 14  
1007



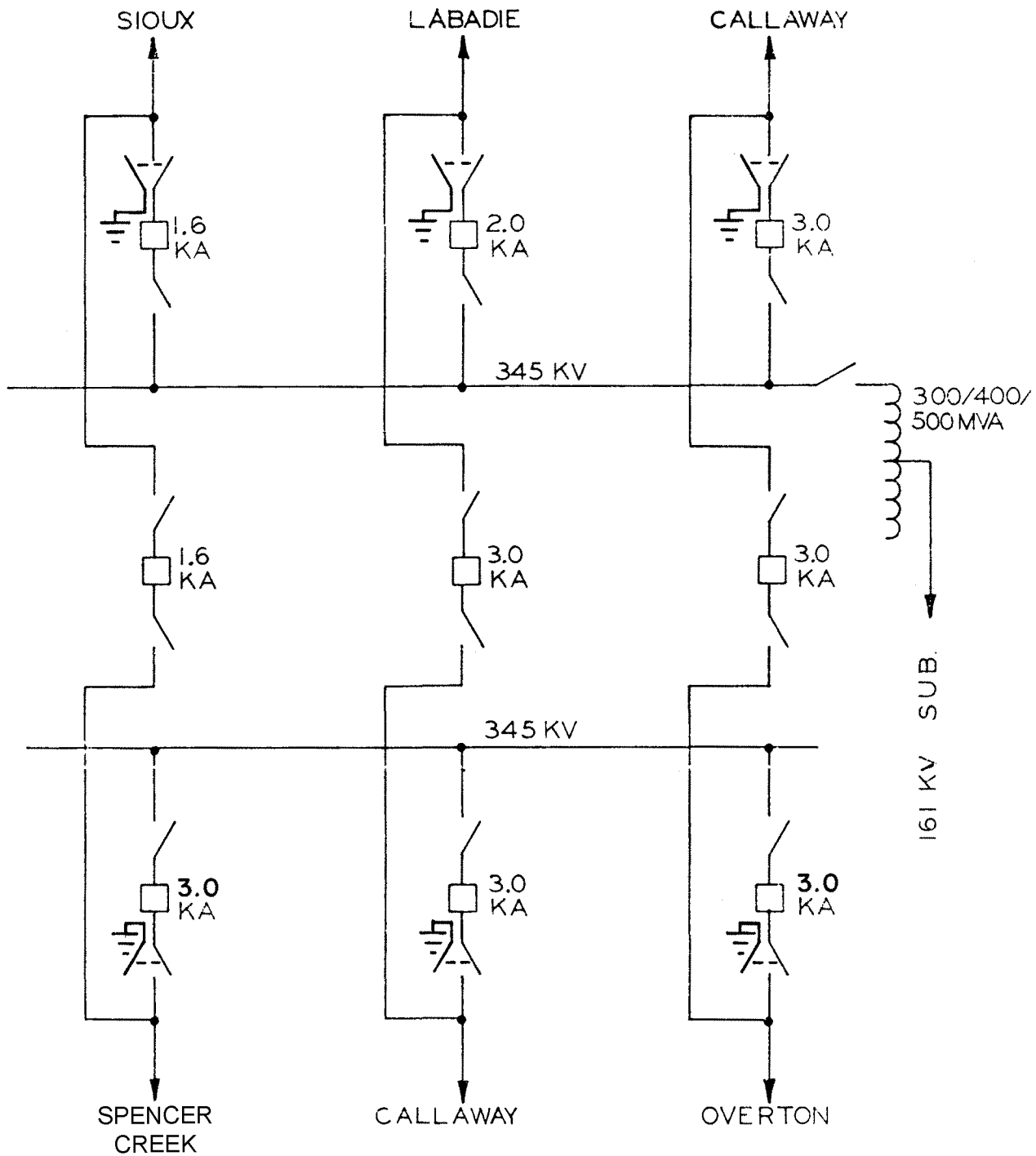


REV. 14  
10/07

UNION ELECTRIC COMPANY  
CALLAWAY PLANT  
FINAL SAFETY ANALYSIS REPORT

FIGURE 8.2-1  
345 KV TRANSMISSION  
LINE  
CIRCUITS



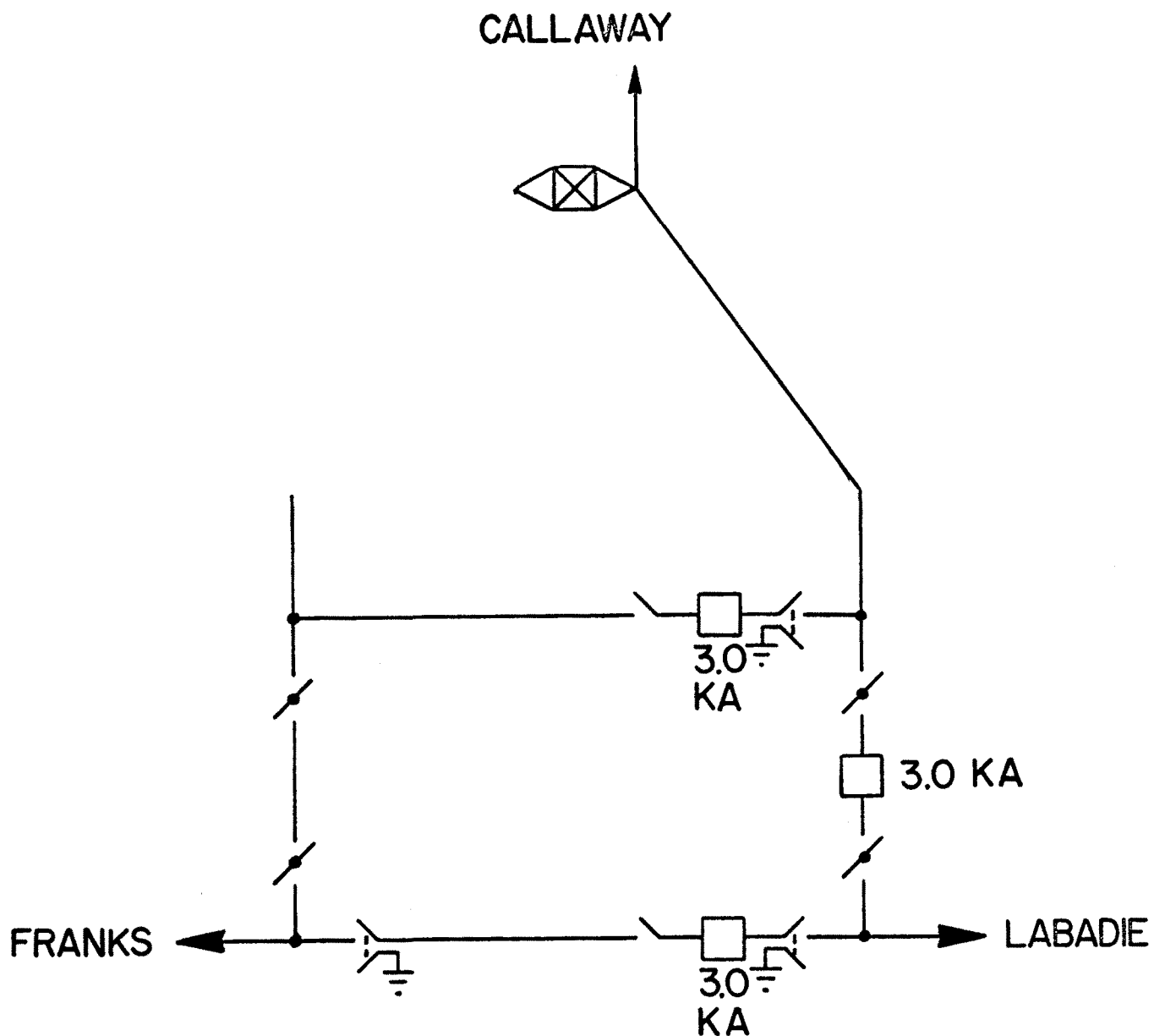


REV. 1  
10/07

**UNION ELECTRIC COMPANY  
CALLAWAY PLANT  
FINAL SAFETY ANALYSIS REPORT**

FIGURE 8.2-2  
MONTGOMERY 345 KV  
SUBSTATION  
1981



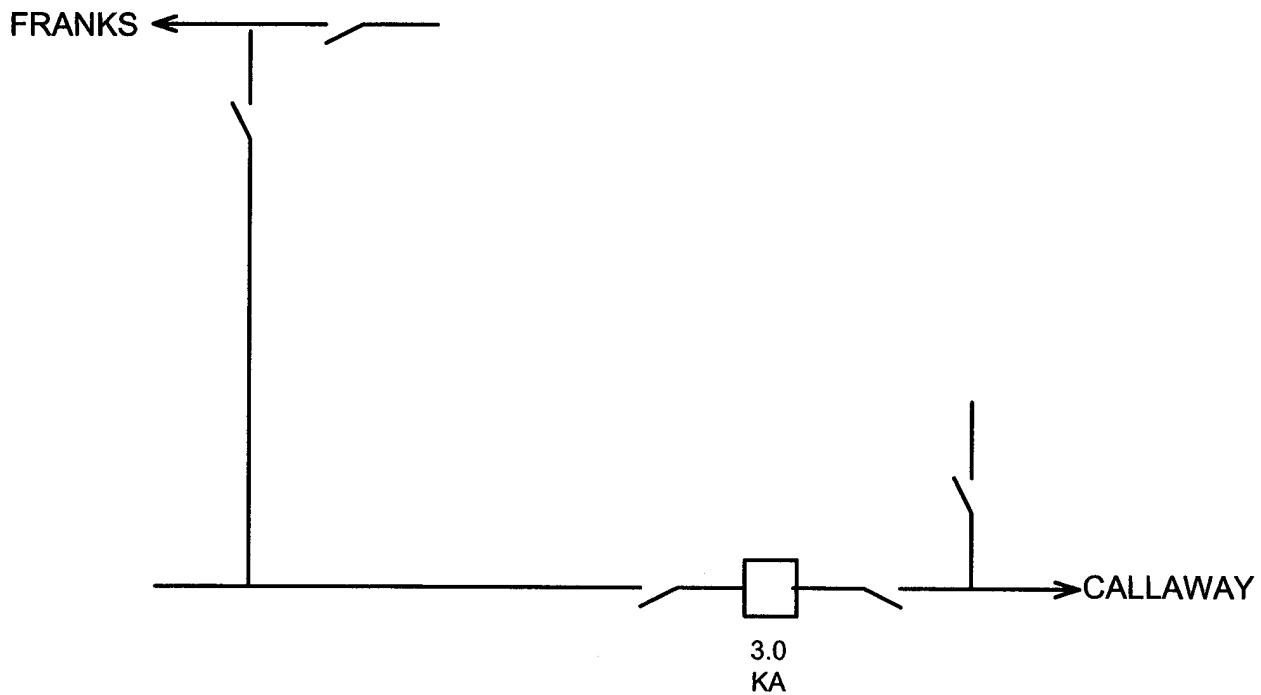


REV OL-13  
05/03

UNION ELECTRIC COMPANY  
CALLAWAY PLANT  
FINAL SAFETY ANALYSIS REPORT

FIGURE 8.2-3  
345KV ONE LINE  
BLAND SUBSTATION



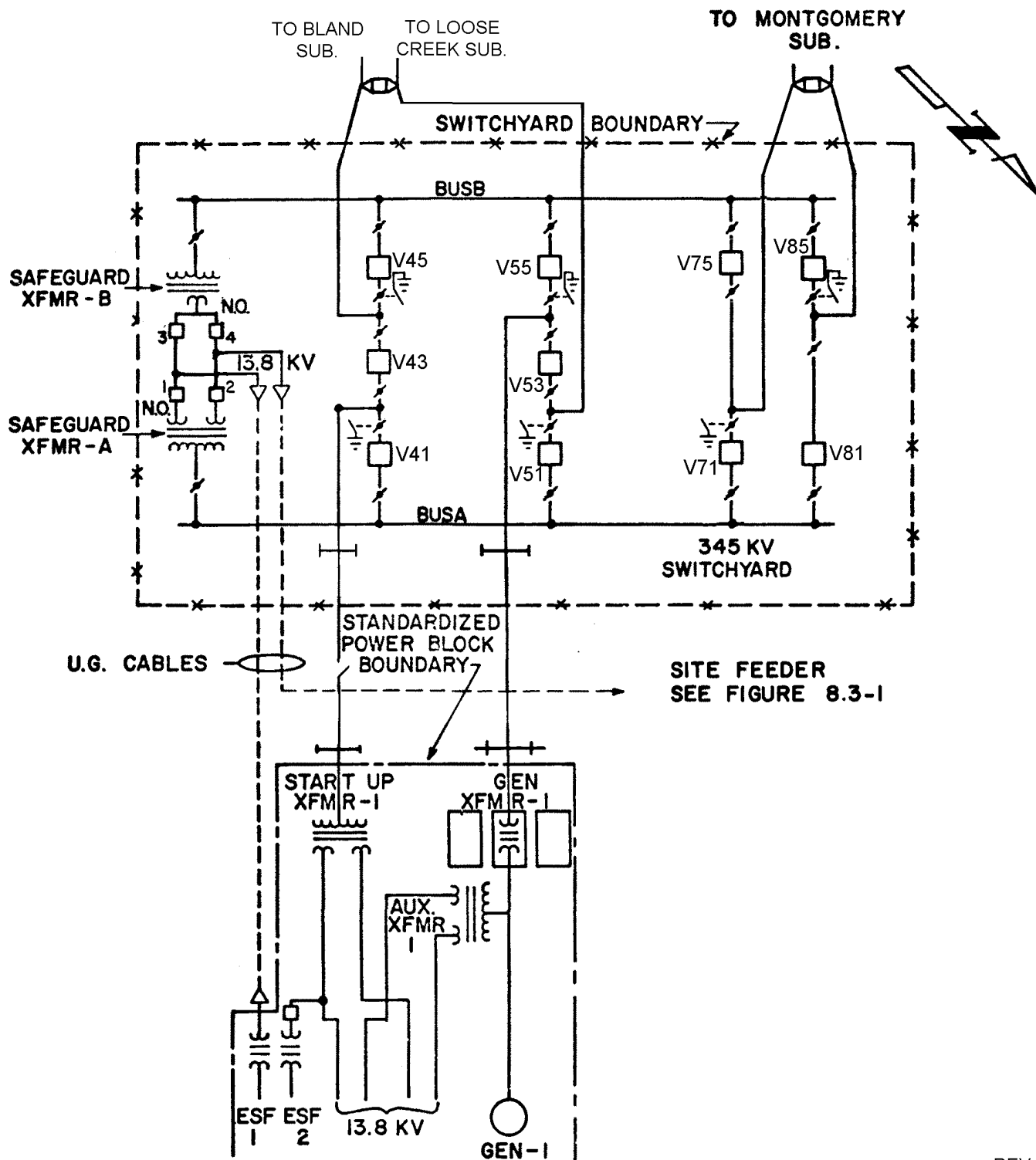


Rev. 0  
10/07

**UNION ELECTRIC COMPANY  
CALLAWAY PLANT  
FINAL SAFETY ANALYSIS REPORT**

FIGURE 8.2-4  
345 KV ONE LINE  
LOOSE CREEK SUBSTATION





REV. 15  
10/07

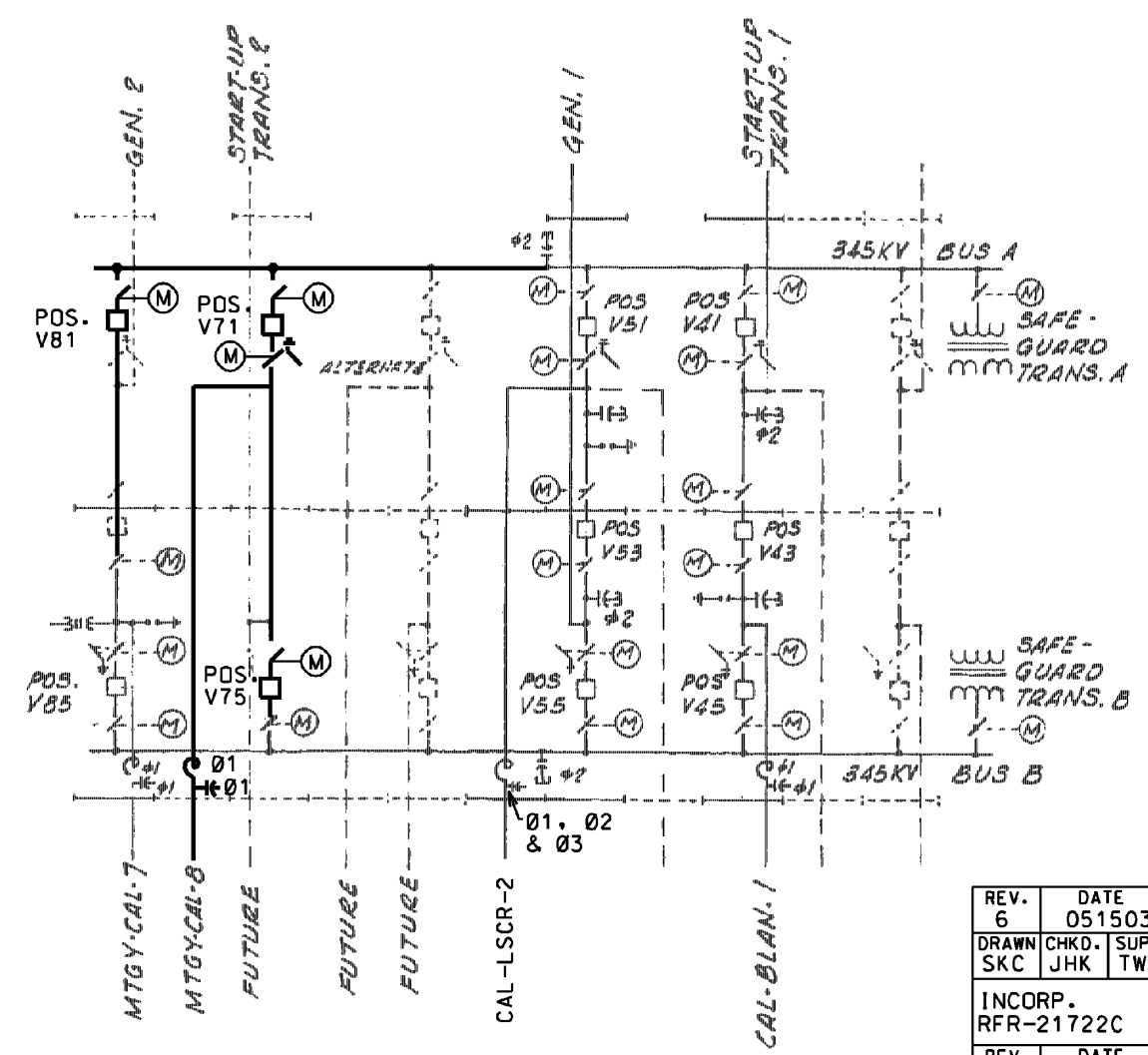
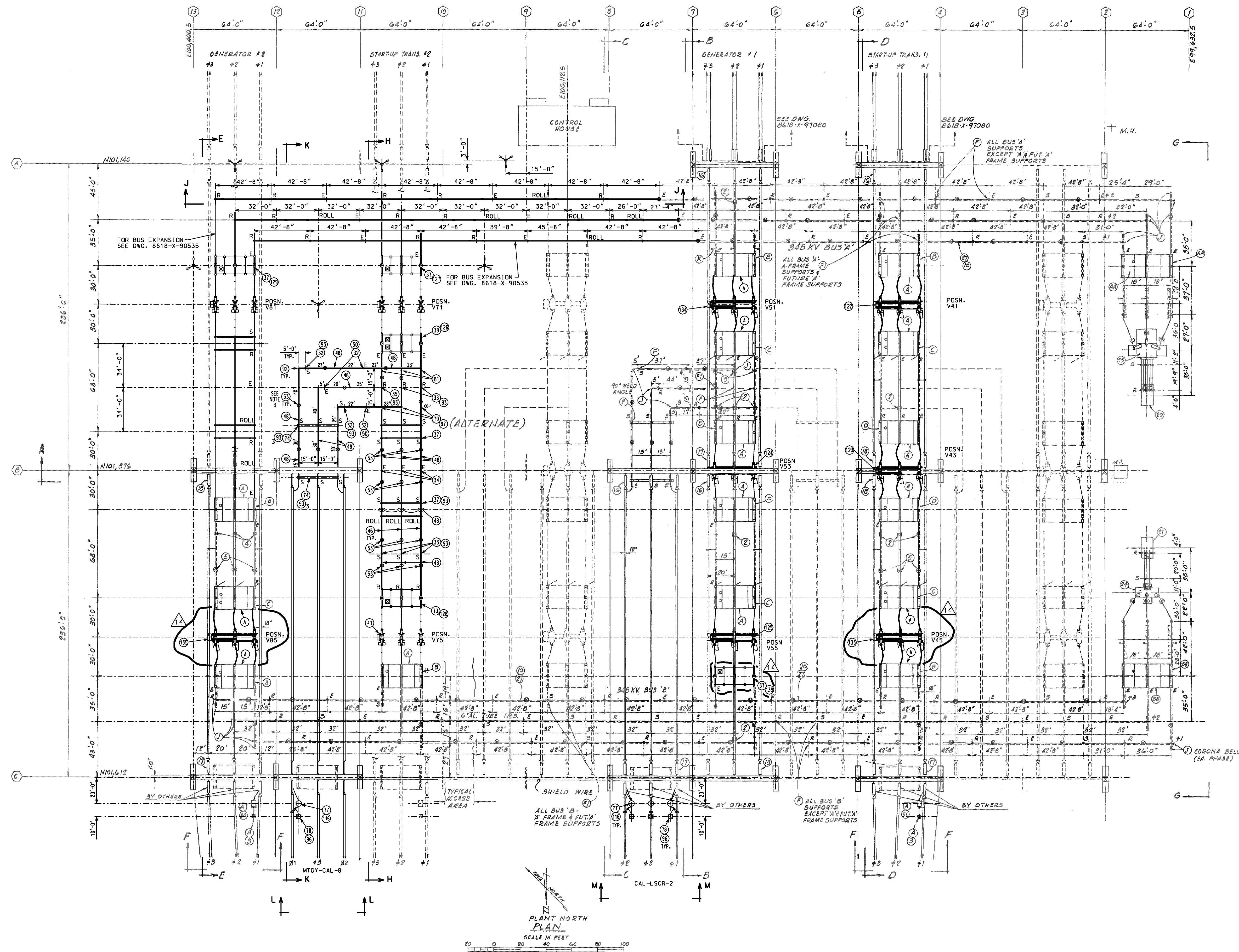
UNION ELECTRIC COMPANY  
CALLAWAY PLANT  
FINAL SAFETY ANALYSIS REPORT

FIGURE 8.2-5  
345 KV ONE LINE AND  
GENERAL ARRANGEMENT  
CALLAWAY PLANT



Figure 8.2-6 has been deleted





ONE LINE DIAGRAM

E = EXPANSION BUS SUPPORT  
S = SLIP FIT BUS SUPPORT  
R = FIX (RIGID) FIT BUS SUPPORT  
ROLL = ROLLER BUS SUPPORT

## NOTES:

1. INDICATES DAMPER CABLE-55G KCMIL AA. (BY CUSTOMER) TO BE INSTALLED INSIDE ALL BUS TUBING. SEE NOTE 3.
2. IF VERTICAL BREAK SWITCHES ARE USED, HINGED END TO BE ON PCB SIDE.
3. 8 INDICATES BUS VIBRATION DAMPER LOCATED AT THE 1/3 POINT OF THE SPAN PLUS 2 FEET FROM THE MOST RIGID BUS SUPPORT. (EXAMPLE: 1/3 OF SPAN 44'-0" = 14' 8" PLUS 2'-0" = 16'-8"). DAMPERS ARE ALCOA CHT NO 1706-013 CHV.
4. DENOTES EQUIPMENT PERMANENTLY REMOVED FROM SERVICE AND MAY NOT BE LOCATED AS SHOWN.

## REFERENCE DWGS.:

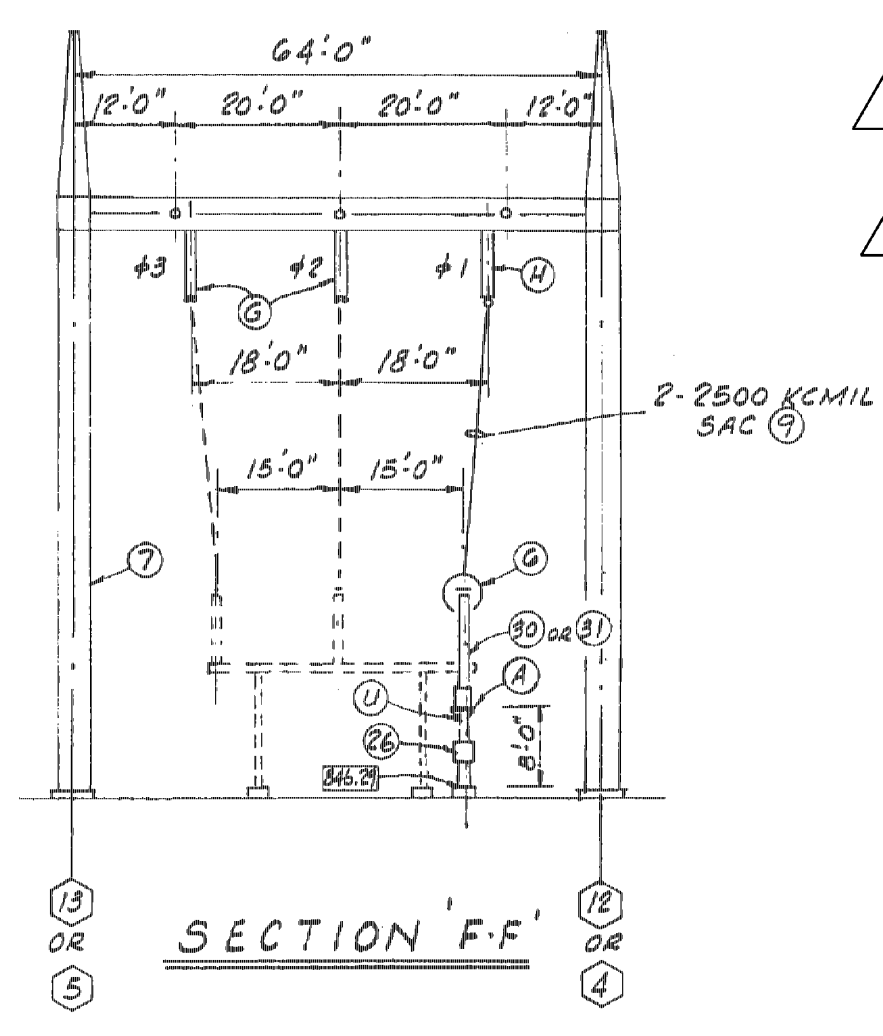
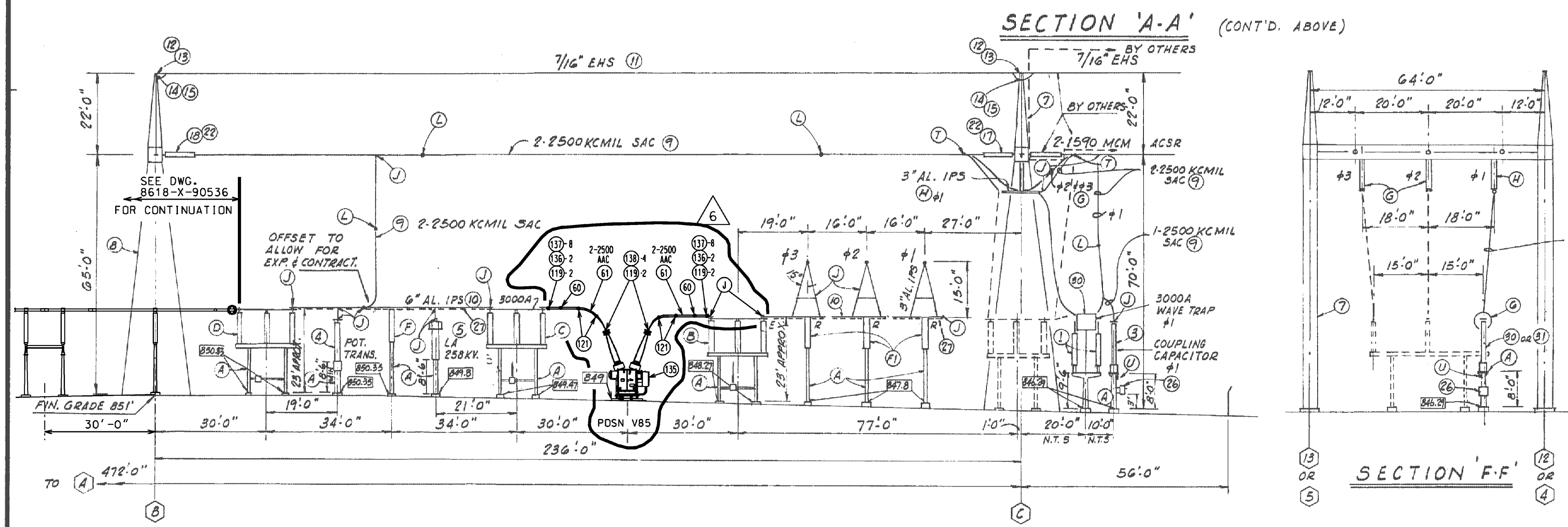
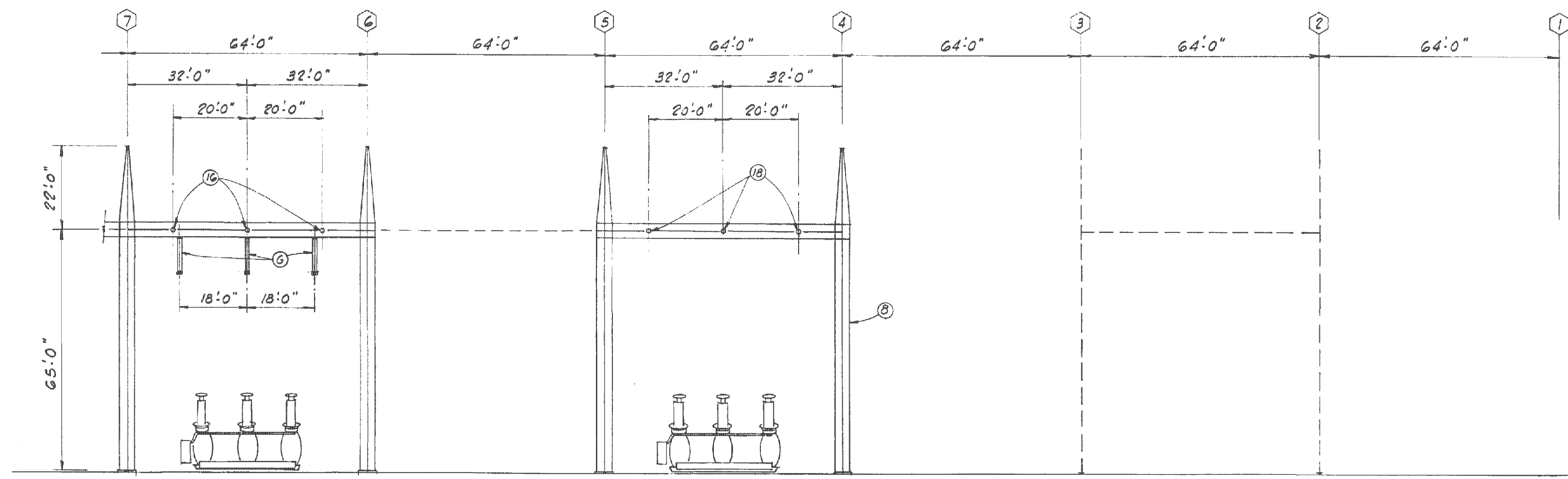
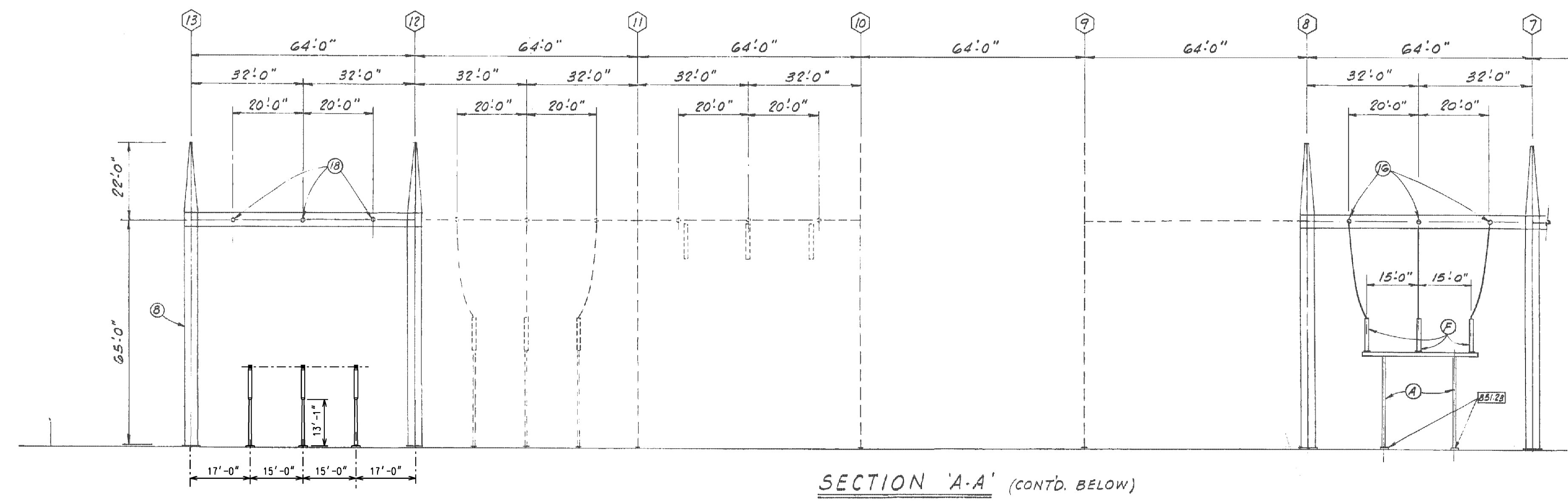
EQUIPT. BILL OF MATERIAL ----- 8618-G-95170  
EPT. BILL OF MATERIAL, CONTINUED ----- 8618-Z-90563  
EPT. BILL OF MATERIAL, CONTINUED ----- 8618-Z-90538  
EPT. ARGMT. PLAN POSN. V81/BUS 'A' EXP. ----- 8618-X-90535  
EPT. ARGMT. SECTS. SH. 1 ----- 8618-Y-95167  
EPT. ARGMT. SECTS. SH. 2 ----- 8618-Y-95168  
EPT. ARGMT. SECTS. SH. 3 ----- 8618-X-90536  
EPT. ARGMT. SECTS. SH. 4 ----- 8618-X-90537  
EPT. ARGMT. SECTS. SH. 5 ----- 8618-Y-90562  
EQUIPT. DET. MISCELLANEOUS ----- 8618-Y-95169  
DIS-TRAN EQUIPT. ARRANGEMENTS 345KV. ----- DWGS. 103005 TO 103012  
DIS-TRAN EQUIPT. ARRANGEMENTS 13.8KV. ----- DWGS. 103084 & 103085

AS-BUILT

DRAWN 12-77 G. FULLER CHKD 12/25/77 NOT CHKD SUPV.	EQUIPMENT ARRANGEMENT PLAN 345KV SWITCHYARD		FSAR FIGURE 8.2-7	CLASS 07020
APPRO. 12/25/77 D. JAMES UNION ELECTRIC COMPANY ST. LOUIS, MO.	LOCATION 001017	CALLAWAY LOCATION 819	CALLAWAY SWITCHYARD	REV. 07020
8618-X-95166			14	REV.



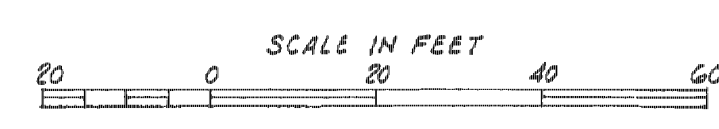
REV.	DATE
4	040803
DRAWN	CHKD. SUPV.
SKC	DJB TWS
INCORP.	
RFR-21722C	
REV.	DATE
5	120304
DRAWN	CHKD. SUPV.
MAL	RLW MAM
INCORP.	
RFR-22941A.	
REV.	DATE
6	062519
DRAWN	CHKD. SUPV.
MAL	AHR DME
INCORP.	
MP 17-0028.	
REV.	O.



- LEGEND:**
- 651 - INDICATES BOTTOM OF BASE ELEVATIONS.
  - INDICATES DAMPENING CABLE.
- REFERENCE DRAWINGS:**
- DIS-TRAN EQUIP'T ARRANGEMENTS 345KV. --- 103005 TO 103012
  - EQUIP'T. BILL OF MATERIAL --- 8618-G-95170
  - EQUIP'T. BILL OF MATERIAL --- 8618-Z-90563
  - EQUIP'T. ARRANGEMENT PLAN --- 8618-X-95166
  - EQUIP'T. ARRANGEMENT SECT. 345KV --- 8618-Y-95168
  - EQUIP'T. DET. MISCELLANEOUS --- 8618-Y-95169

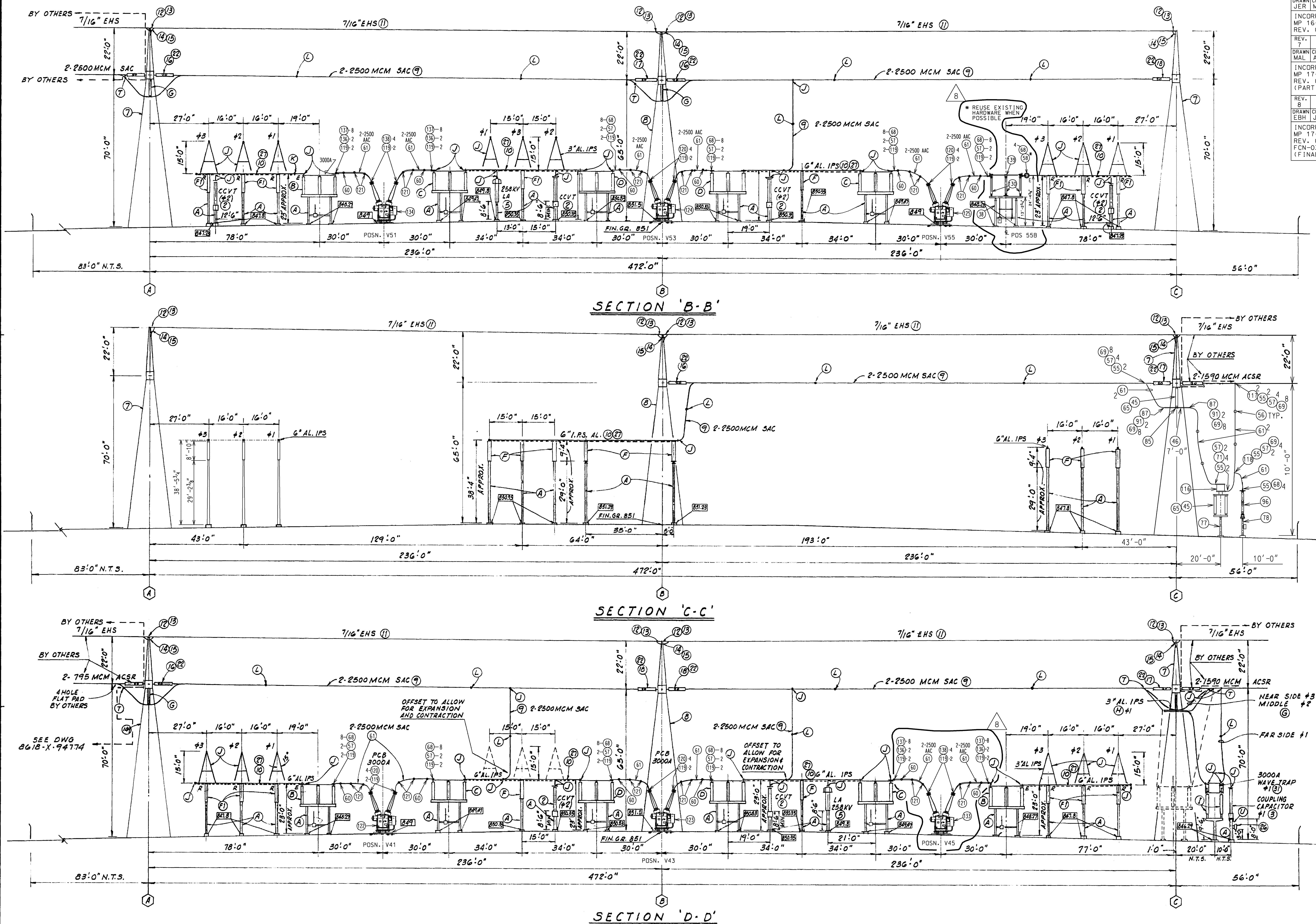
AS-BUILT

DRAWN 11-15-77	EQUIPMENT ARRANGEMENT SECTIONS	
G. FULLER	SHEET-1	
CHKD. 12/13/77	345 KV SWITCHYARD	
NOT CHKD	FSAR FIGURE 8.2-8	
SUPV.		
APPD.	LOCATION CALLAWAY LOCATION	CLASS
	001017 819	07020
UNION ELECTRIC COMPANY	CALLAWAY SWITCHYARD	REV
ST. LOUIS, MO.	8618-Y-95167	6





REV.	DATE	BY	CHKD.	SUPV.
6	011218	JER	MAL	DME
INCORP.				
MP 16-0021.				
REV.	DATE	BY	CHKD.	SUPV.
7	032619	JER	MAL	DME
INCORP.				
MP 17-0028.				
REV.	DATE	BY	CHKD.	SUPV.
8	050119	EBH	JER	DME
INCORP.				
MP 17-0028.				
REV.	DATE	BY	CHKD.	SUPV.
0				
FCN-03.				
(FINAL)				



## LEGEND:

851 - INDICATES BOTTOM OF BASE & ELEVATIONS.  
 --- INDICATES DAMPENING CABLE.

## REFERENCE DRAWINGS:

DISTRAN EQUIPT. ARRANGEMENTS 345KV - 103005 TO 103012  
 EQUIPT. BILL OF MATERIAL - 8618-G-95170  
 EQUIPT. BILL OF MATERIAL - 8618-Z-90563  
 EQUIPT. ARRANGEMENT PLAN - 8618-X-95166  
 EQUIPT. ARRANGEMENT SECT. SH-1 - 8618-Y-95167  
 EQUIPT. DET. MISCELLANEOUS - 8618-Y-95169

## AS-BUILT

DRAWN 11/14/77	G. FULLER	EQUIPMENT ARRANGEMENT
CHKD 12/23/77	N. CHID	SECTIONS SHEET-2
SUPV.		345KV SWITCHYARD
APPD	LOCATION CALLAWAY LOCATION	FSAR FIGURE 8.2-9
001017	819	
UNION ELECTRIC COMPANY	CALLAWAY SWITCHYARD	CLASS 07020
ST. LOUIS, MO.	8618-Y-95168	REV. 8







D

SCALE:  $1/8" = 1' - 0"$



SCALE:  $1/8" = 1' - 0"$



## AS-BUILT

5



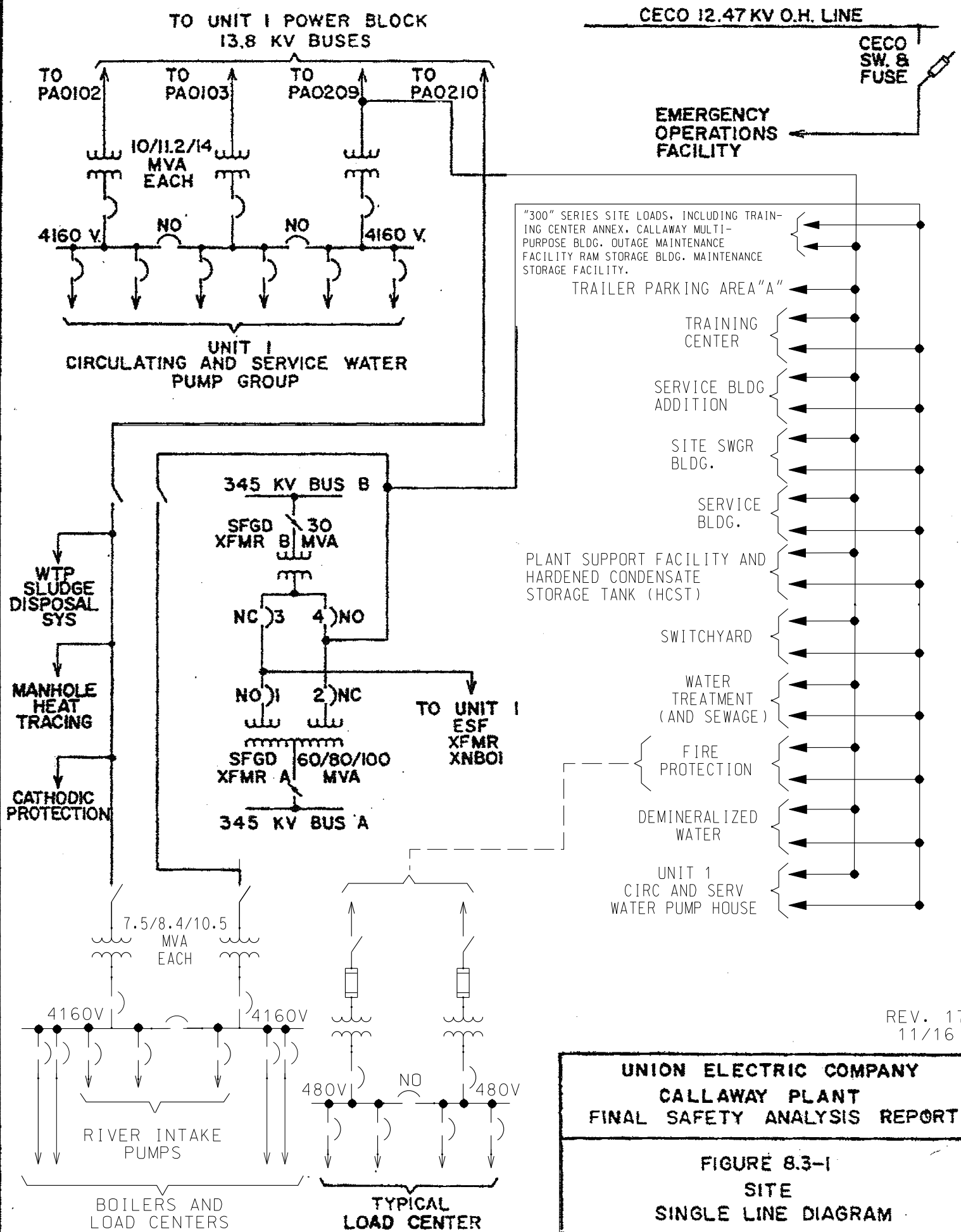




Figure 8.3-1B has been deleted