
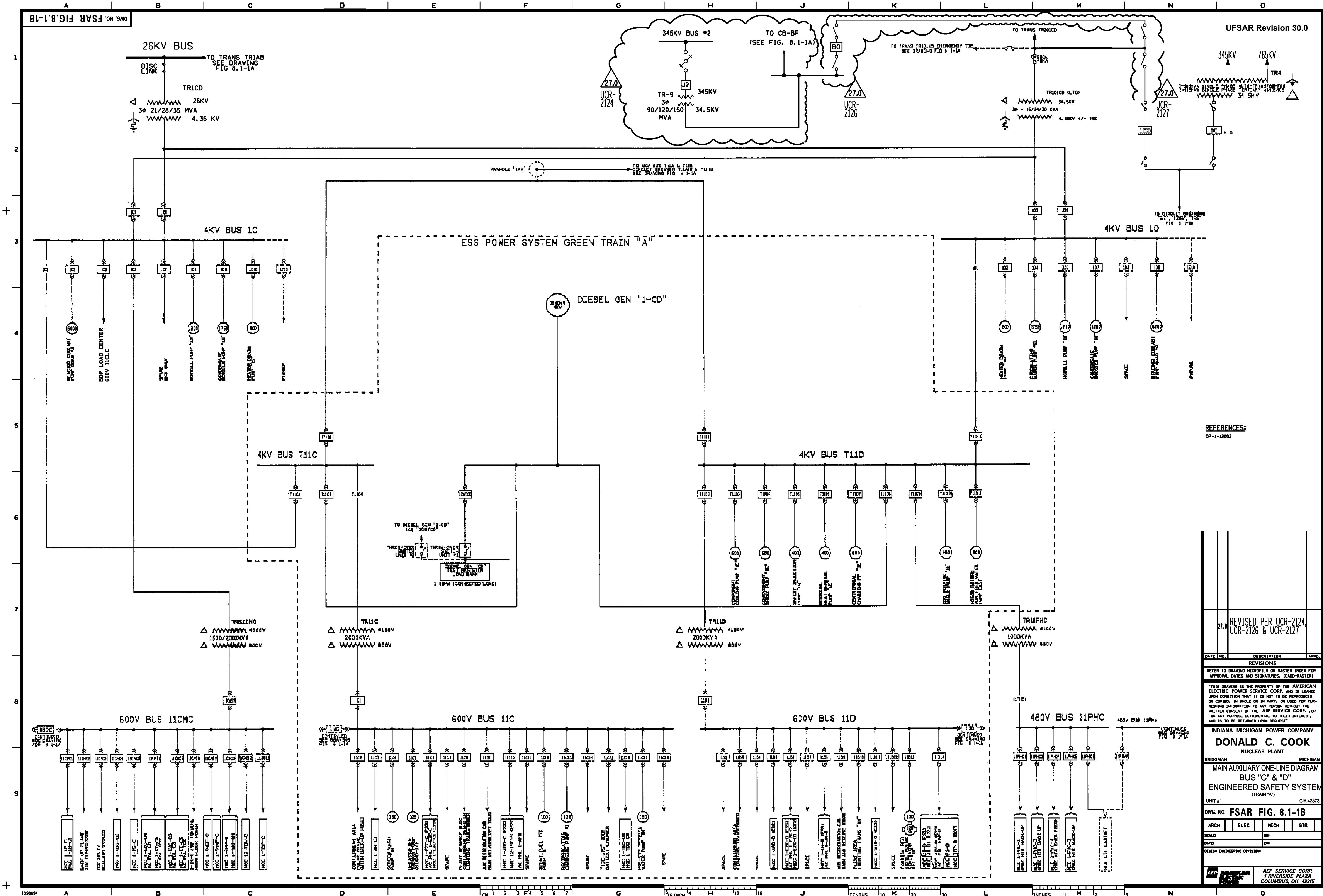




<b>INDIANA MICHIGAN POWER COMPANY</b> <h1 style="margin: 0;">DONALD C. COOK</h1> <p style="margin: 0;">NUCLEAR PLANT</p>			
BRIDGMAN		MICHIGAN	
<b>MAIN AUXILIARY ONE-LINE DIAGRAM</b> <h2 style="margin: 0;">BUS "A" &amp; "B"</h2> <h2 style="margin: 0;">ENGINEERED SAFETY SYSTEM</h2> <p style="margin: 0;">(TRAIN "B")</p>			
UNIT #1		CIA 42373	
<b>DWG. NO. FSAR FIG. 8.1-1A</b>			
ARCH	ELEC	MECH	STR
SCALE: NONE		DB: -	
DATE: -		CHK: -	
<b>DESIGN ENGINEERING DIVISION</b>			
 <b>AMERICAN ELECTRIC POWER</b>		<b>AEP SERVICE CORP.</b> <b>1 RIVERSIDE PLAZA</b> <b>COLUMBUS, OH 43215</b>	



REFERENCES:  
OP-1-12002

REVISED PER UCR-2124  
UCR-2126 & UCR-2127

DATE NO. DESCRIPTION APPD.

REVISIONS

REFER TO DRAWING MICROFILM OR MASTER INDEX FOR APPROVAL DATES AND SIGNATURES. (CADD-MASTER)

"THIS DRAWING IS THE PROPERTY OF THE AMERICAN ELECTRIC POWER SERVICE CORP. AND IS LOANED UPON CONDITION THAT IT IS NOT TO BE REPRODUCED OR COPIED, IN WHOLE OR IN PART, OR USED FOR FURNISHING INFORMATION TO ANY PERSON WITHOUT THE WRITTEN CONSENT OF THE AEP SERVICE CORP., OR FOR ANY PURPOSE DETRIMENTAL TO THEIR INTEREST, AND IS TO BE RETURNED UPON REQUEST"

INDIANA MICHIGAN POWER COMPANY

DONALD C. COOK

NUCLEAR PLANT

BRIDGMAN MICHIGAN

MAIN AUXILIARY ONE-LINE DIAGRAM

BUS "C" & "D"

ENGINEERED SAFETY SYSTEM

(TRAIN "A")

UNIT #1 CIA 42373

DWG. NO. FSAR FIG. 8.1-1B

ARCH. ELEC. MECH. STR.

SCALE: IN.

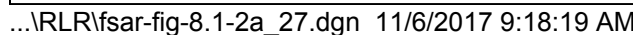
DATE: ON.

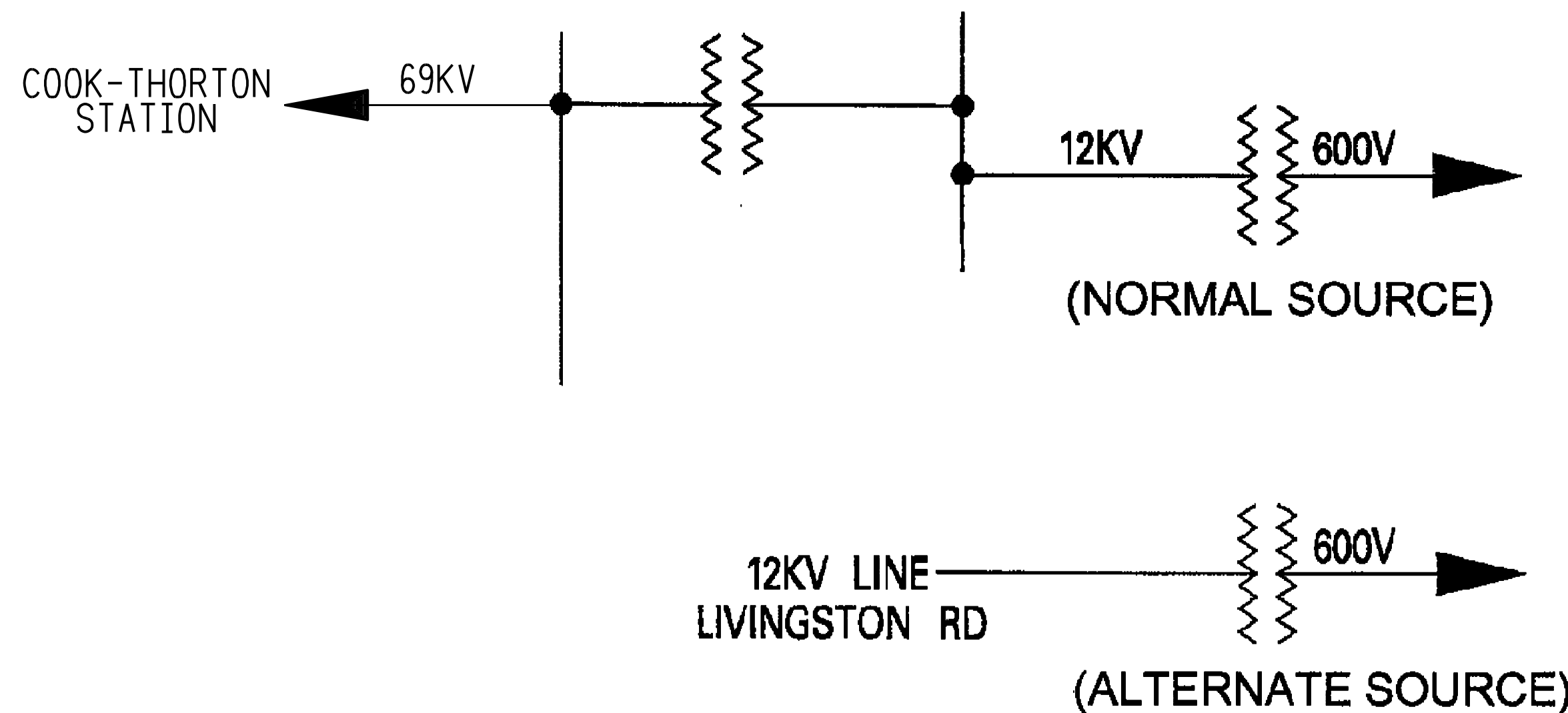
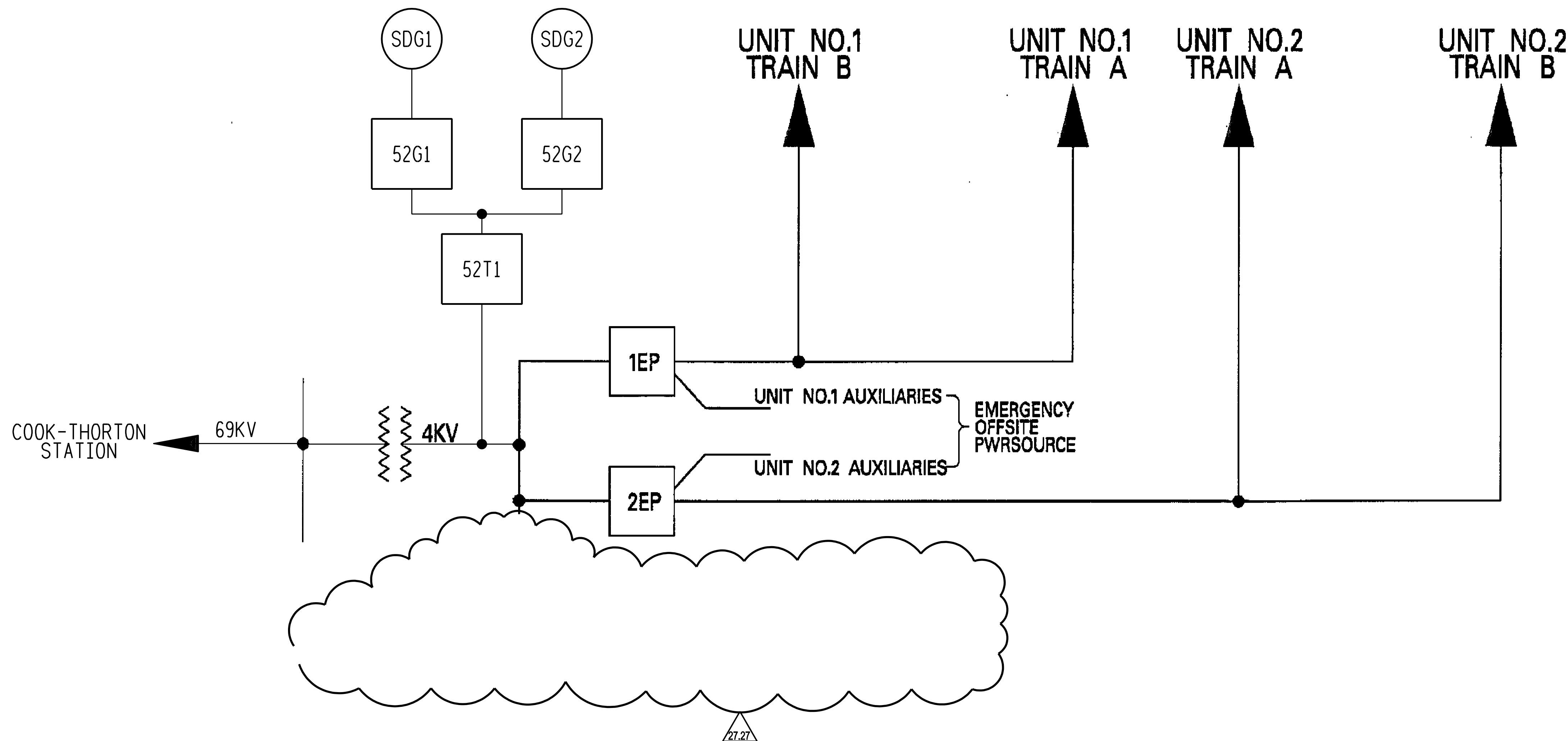
DESIGN ENGINEERING DIVISION

AEP SERVICE CORP.

1 RIVERSIDE PLAZA

COLUMBUS, OH 43215

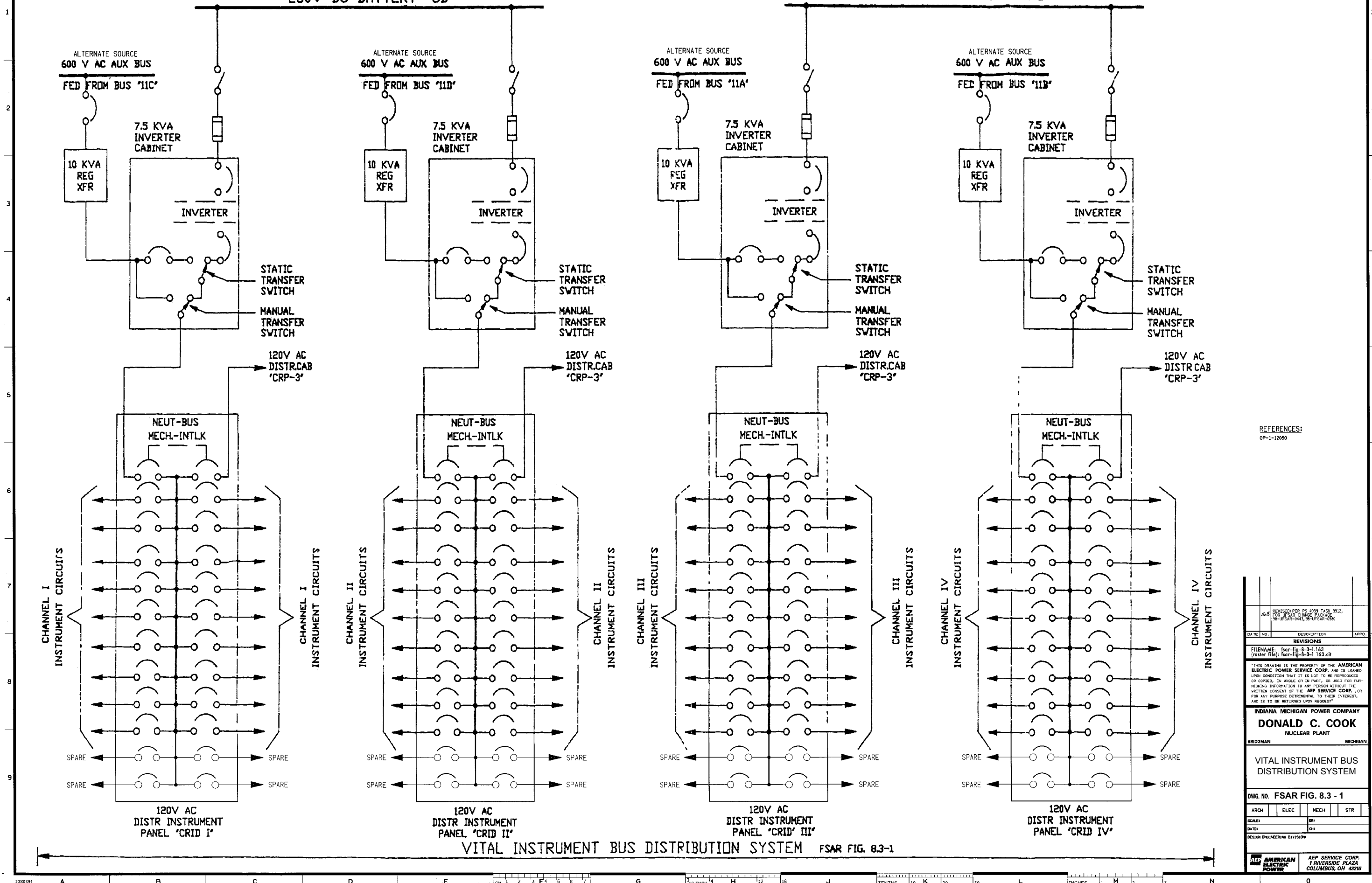




DEDICATED FIRE PROTECTION  
WATER SUPPLY PUMP HOUSE

REFERENCES:  
EP-1-12007  
30291-1000A

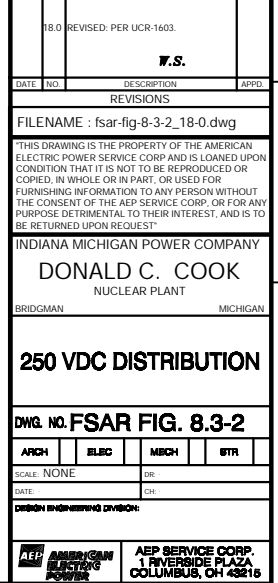
DATE	NO.	DESCRIPTION	APPRO.
		REVISIONS	
		REFER TO DRAWING MICROFILM OR MASTER INDEX FOR APPROVAL DATES AND SIGNATURES. (CADD-MASTER)	
		"THIS DRAWING IS THE PROPERTY OF THE AMERICAN ELECTRIC POWER SERVICE CORP. AND IS LOANED UPON CONDITION THAT IT IS NOT TO BE REPRODUCED OR COPIED, IN WHOLE OR IN PART, OR USED FOR FURNISHING INFORMATION TO ANY PERSON WITHOUT THE WRITTEN CONSENT OF THE AEP SERVICE CORP. OR FOR ANY PURPOSE DETRIMENTAL TO THEIR INTEREST, AND IS TO BE RETURNED UPON REQUEST."	
		INDIANA MICHIGAN POWER COMPANY	
		DONALD C. COOK	
		NUCLEAR PLANT	
		BRIDGMAN	MICHIGAN
		SIMPLIFIED OFFSITE POWER SOURCES	
		DWG. NO. FSAR FIG. 8.1-2B	
		ARCH	ELEC
		MECH	STR
		SCALE: NONE	OR:
		DATE: CH:	
		DESIGN ENGINEERING DIVISION	
		AEP AMERICAN ELECTRIC POWER	AEP SERVICE CORP. RIVERSIDE PLAZA COLUMBUS, OH 43216

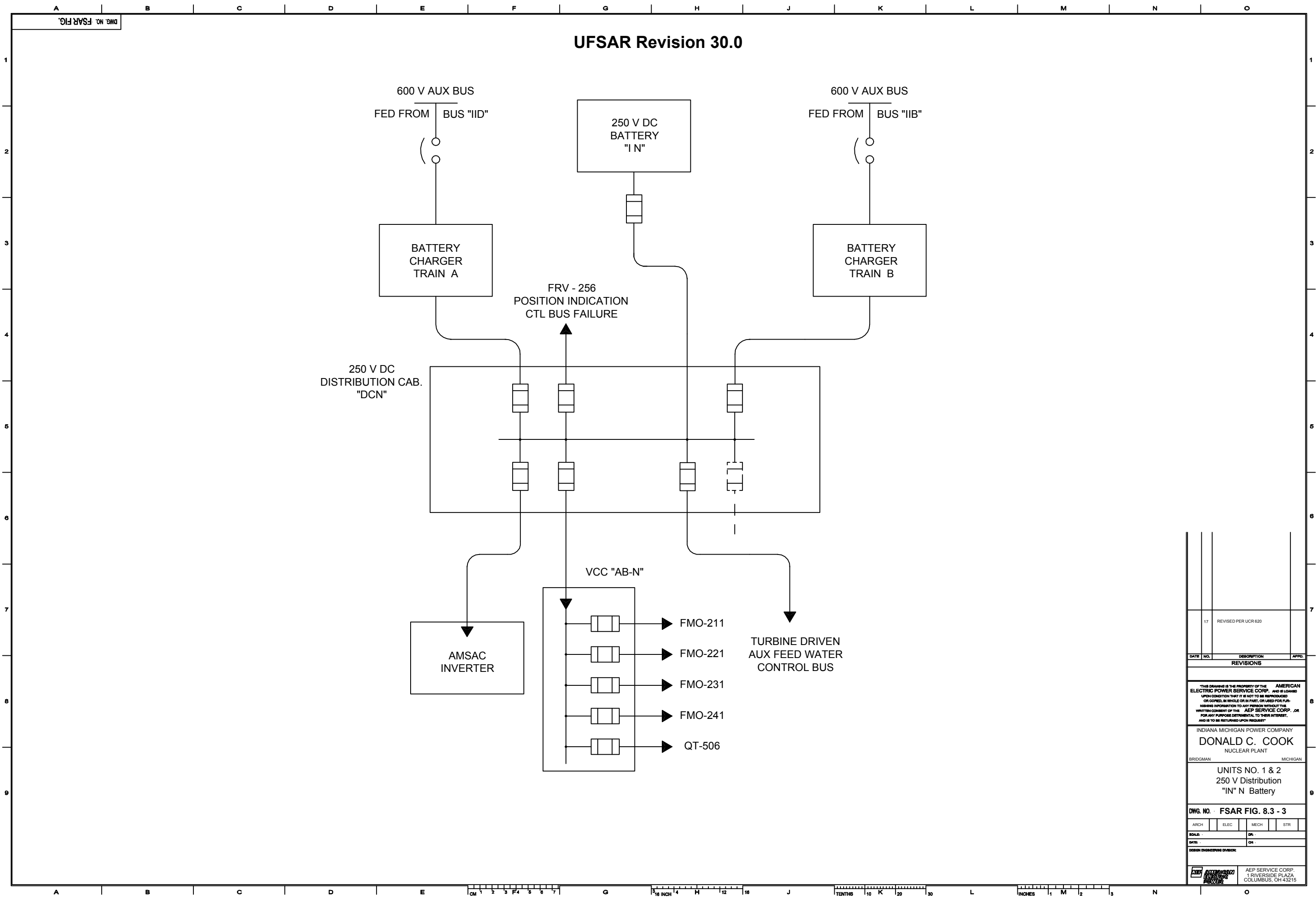


REFERENCES:  
OP-1-12050

	REVISED PER PS #919 TASK 9912, FOR IFSAR CHANGE PACKAGE 38-UF-3AR-1443, 38-UF-3AR-1500		
163			
DATE	NO.	DESCRIPTION	APPRO.
REVISIONS			
FILENAME: fsar-fig-8-3-1-163			
(master file): fsar-fig-8-3-1-163.ch			
THIS DRAWING IS THE PROPERTY OF THE AMERICAN ELECTRIC POWER SERVICE CORP. AND IS LOANED TO YOU ON THE CONDITION THAT IT IS NOT TO BE REPRODUCED OR COPIED, IN WHOLE OR IN PART, OR USED FOR FURNISHING INFORMATION TO ANY PERSON WITHOUT THE WRITTEN CONSENT OF THE AEP SERVICE CORP. OR FOR ANY PURPOSE DETRIMENTAL TO THEIR INTEREST, AND IS TO BE RETURNED UPON REQUEST.			
INDIANA MICHIGAN POWER COMPANY			
DONALD C. COOK			
NUCLEAR PLANT			
BRIDGMAN		MICHIGAN	
VITAL INSTRUMENT BUS DISTRIBUTION SYSTEM			
DWG. NO. FSAR FIG. 8.3 - 1			
ARCH	ELEC	MECH	STR
SCALE:	BY:		
DATE:	OR:		
DESIGN ENGINEERING DIVISION			
AEP AMERICAN ELECTRIC POWER		AEP SERVICE CORP. 1 RIVERSIDE PLAZA COLUMBUS, OH 43216	

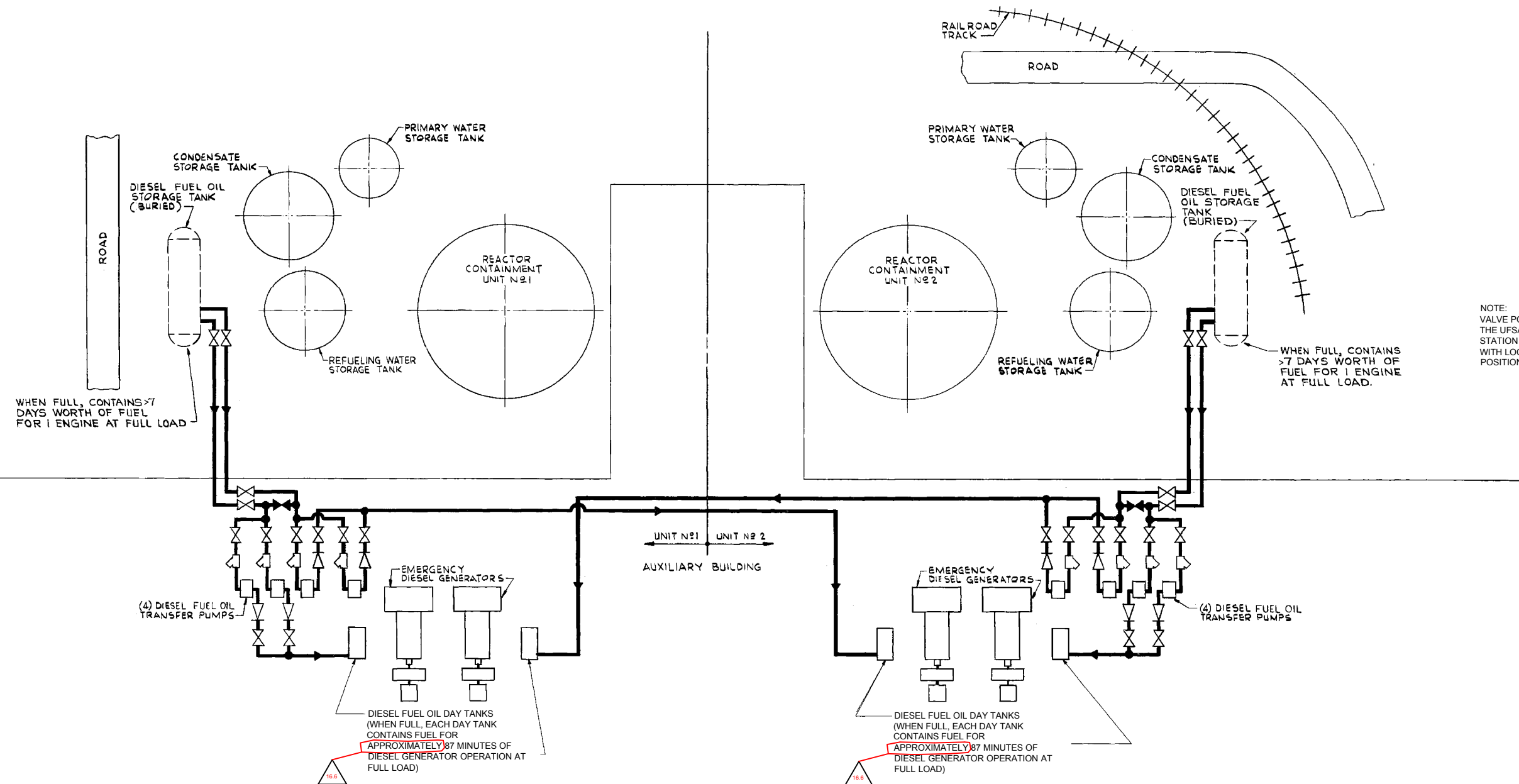
REFERENCES:  
OP-1-12003





	17	REVISED PER UCR 620	
DATE	NO.	DESCRIPTION	APPRO.
REVISIONS			
THIS DRAWING IS THE PROPERTY OF THE AMERICAN ELECTRIC POWER SERVICE CORP. AND IS LOANED UPON CONDITION THAT IT IS NOT TO BE REPRODUCED OR COPIED, IN WHOLE OR IN PART, OR USED FOR PUR- B			
POSING INFORMATION TO ANY PERSON WITHOUT THE WRITTEN CONSENT OF THE AEP SERVICE CORP., OR FOR ANY PURPOSE DETRIMENTAL TO THEIR INTEREST, AND IS TO BE RETURNED UPON REQUEST			
INDIANA MICHIGAN POWER COMPANY			
DONALD C. COOK			
NUCLEAR PLANT			
BRIDGMAN		MICHIGAN	
UNITS NO. 1 & 2			
250 V Distribution			
"IN" N Battery			
9			
DWG. NO. FSAR FIG. 8.3 - 3			
ARCH	ELEC	MECH	STR
SCALE: -		DR: -	
DATE: -		OR: -	
DESIGN ENGINEERING DIVISION:			
AEP		AEP SERVICE CORP. 1 RIVERSIDE PLAZA COLUMBUS, OH 43215	

# UFSAR Revision 30.0



## REFERENCES:

16.6 Revised Per UCR 98-UFSAR-0458	
DATE	DESCRIPTION
REVISIONS	
FILENAME: fsar-fig-8-4-1.163 (aster file); fsar-fig-8-4-1.163.dft	
THIS DRAWING IS THE PROPERTY OF THE AMERICAN ELECTRIC POWER SERVICE CORP. AND IS LOANED UPON CONDITION THAT IT IS NOT TO BE REPRODUCED OR COPIED, IN WHOLE OR IN PART, OR USED FOR FURNISHING INFORMATION TO ANY PERSON WITHOUT THE WRITTEN CONSENT OF THE AEP SERVICE CORP., OR FOR ANY PURPOSE DETRIMENTAL TO THEIR INTERESTS, AND IS TO BE RETURNED UPON REQUEST.	
INDIANA MICHIGAN POWER COMPANY	
DONALD C. COOK	
NUCLEAR PLANT	
BRIDGMAN	MICHIGAN
EMERGENCY DIESEL GENERATOR FUEL OIL SUPPLY UNITS NO. 1 & 2	
DWG. NO. FSAR FIG. 8.4 - 1	
ARCH	ELEC
MECH	STR
SCALE:	OR:
DATE:	OR:
DESIGN ENGINEERING DIVISION	
AEP SERVICE CORP. 1 RIVERSIDE PLAZA COLUMBUS, OH 43215	

NOTE: LOCAL FUEL SUPPLIERS HAVE TOTAL STORAGE CAPACITY OF 5.5 MILLION GALLONS DELIVERY TRUCKS RANGE IN CAPACITY FROM 9,000 TO 15,000 GALLONS THIS INFORMATION IS CONSIDERED HISTORICAL AND IS NOT INTENDED OR EXPECTED TO BE UPDATED FOR THE LIFE OF THE PLANT.