

CIMARRON ENVIRONMENTAL RESPONSE TRUST

Facility Decommissioning Plan – Rev 2

DP SECTION 2 – FACILITY DESCRIPTION

DP SECTION 3 – RADIOLOGICAL STATUS OF FACILITY

DP SECTION 5 – ENVIRONMENTAL INFORMATION

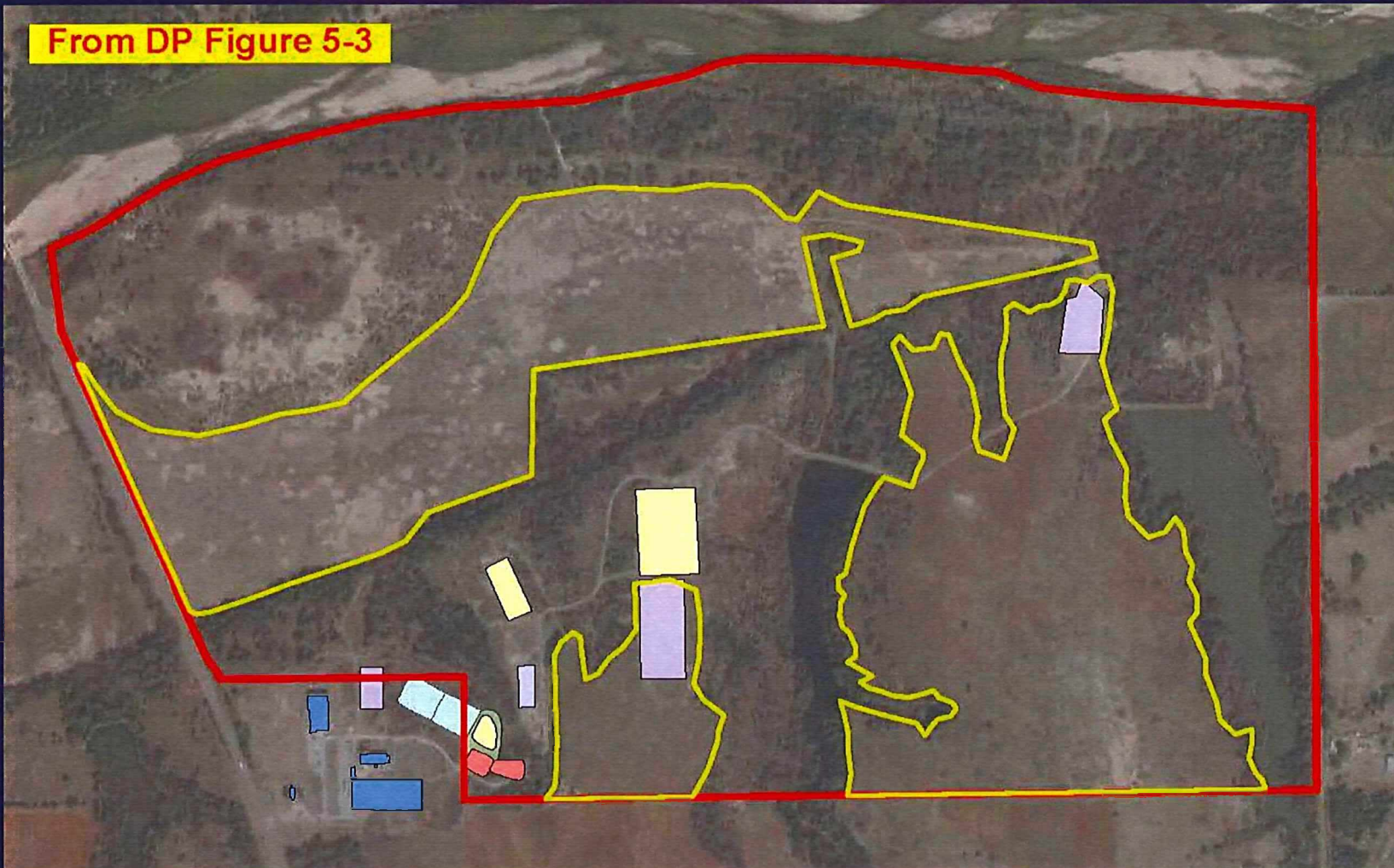
Note: Information provided herein consists of partial or incomplete images and information taken from multiple other data sources. It is provided for summary purposes only and should not be relied upon as technically complete or comprehensive.

March 23, 2021

DP Section 2 - Facility Description

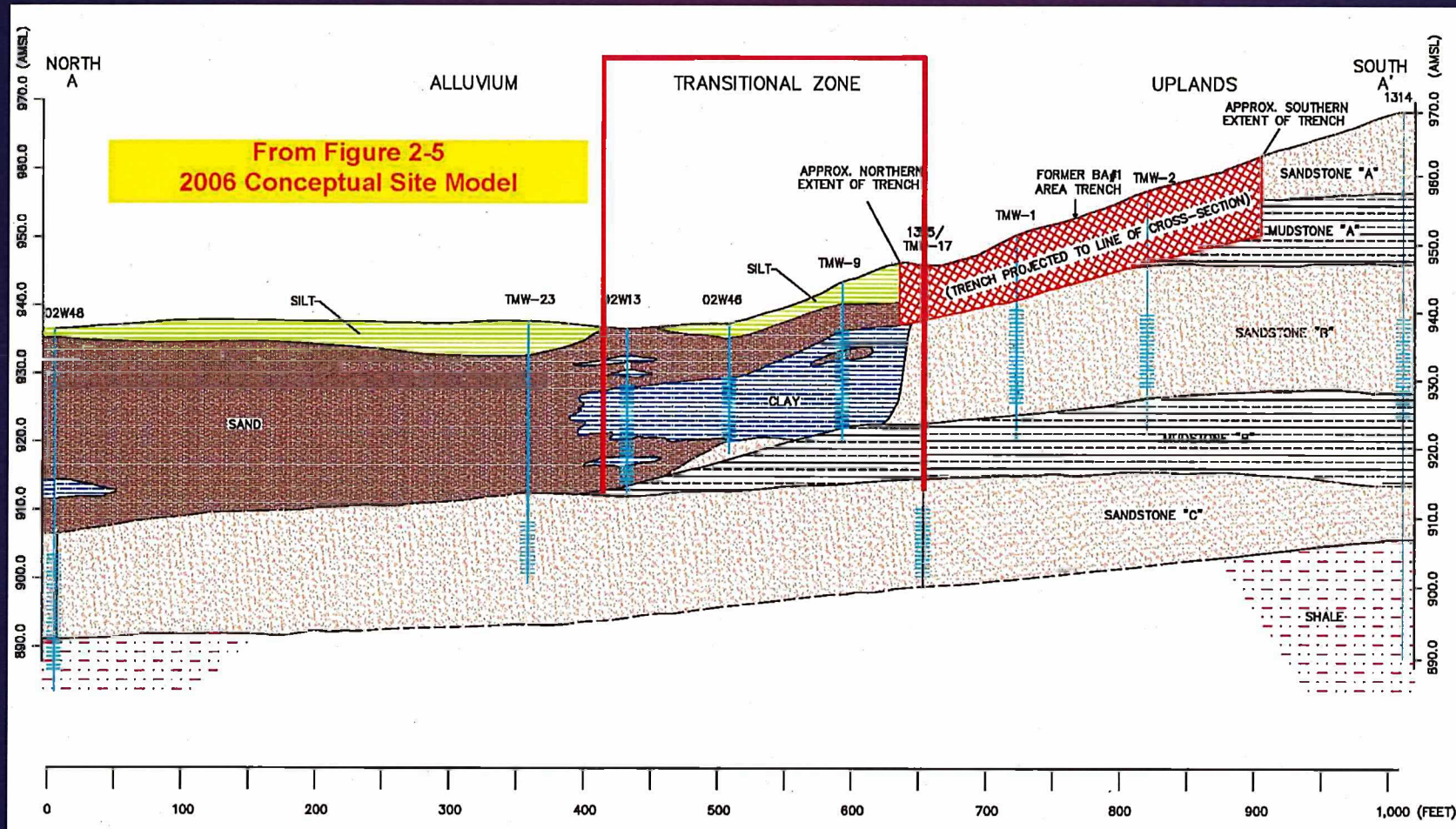
- Current/Future Land Use
- Geology & Seismology
- Surface Water Hydrology
- Hydrogeology
- Natural Resources

From DP Figure 5-3



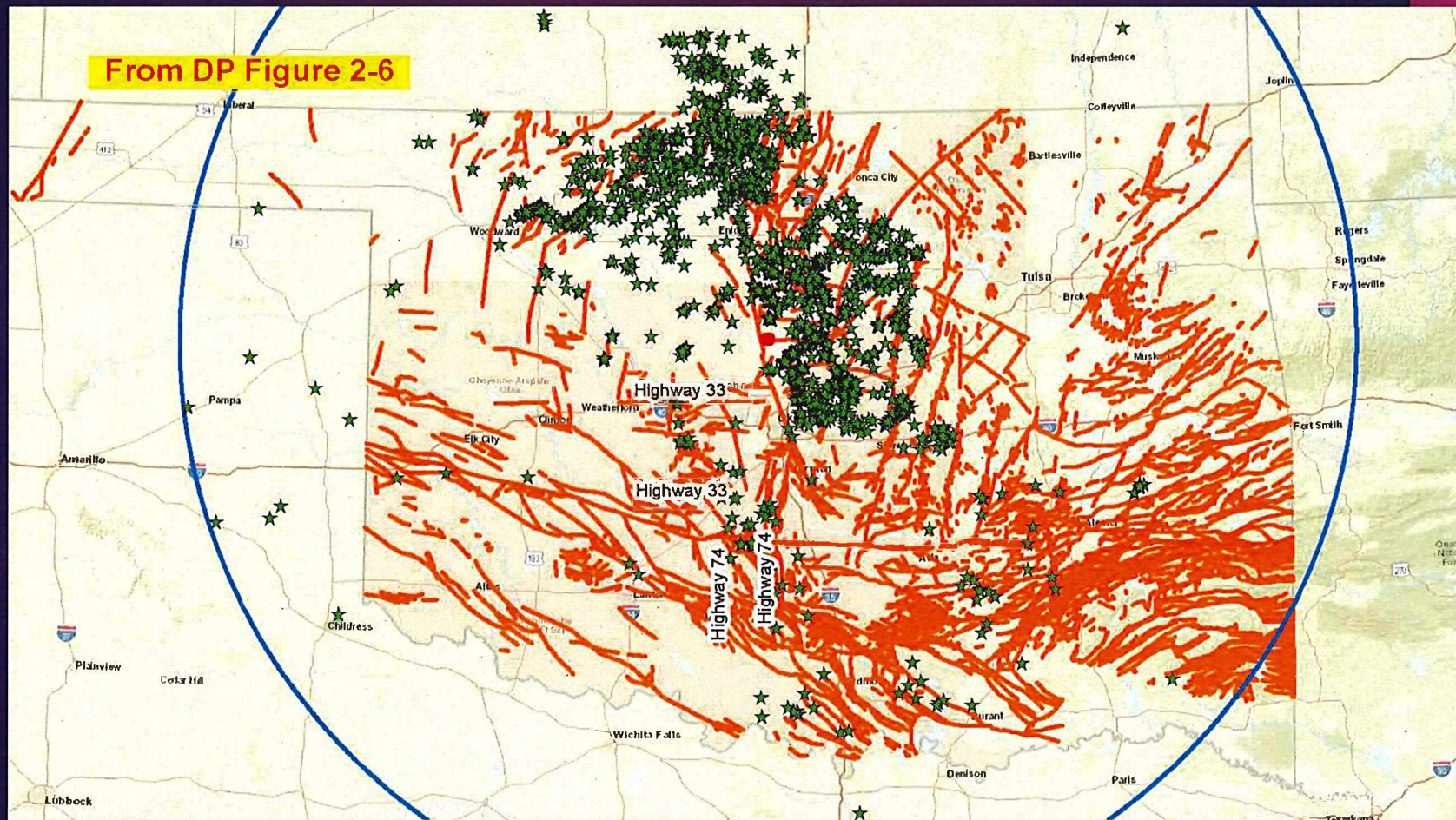
3

Land
Use



Faults and Earthquakes > M3

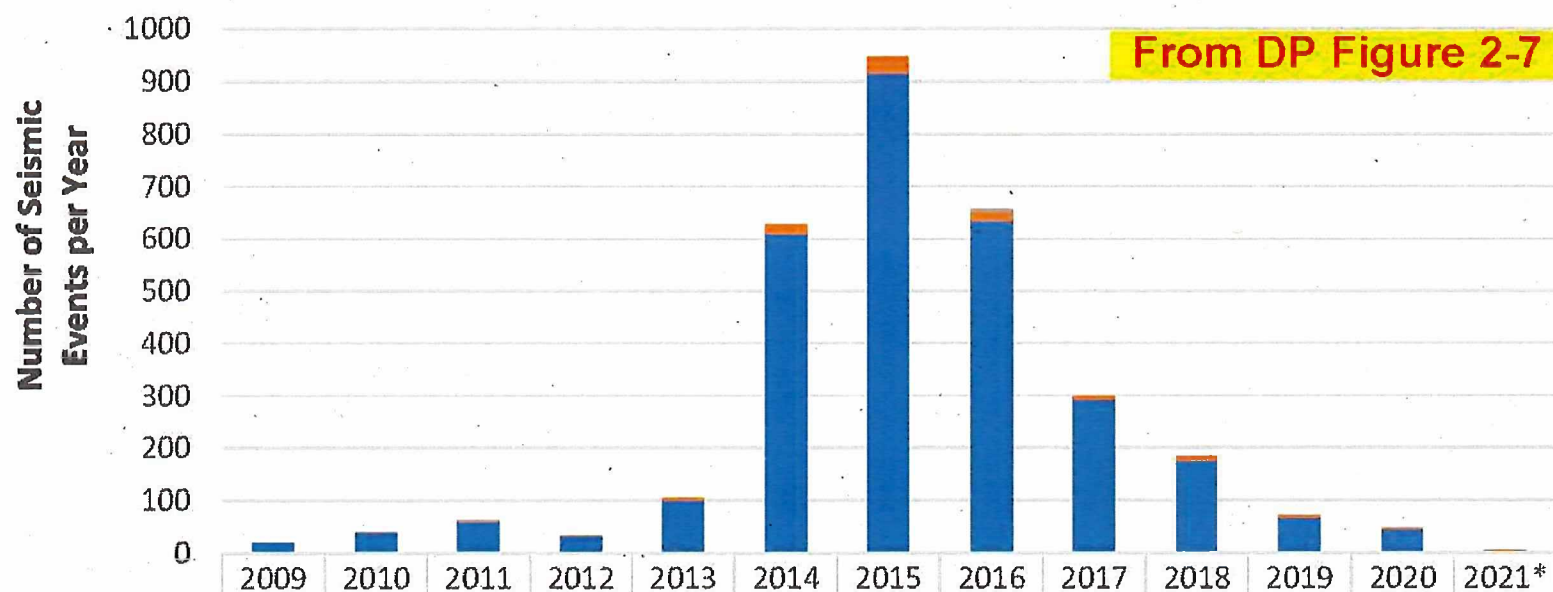
5



Frequency of Earthquakes > M3

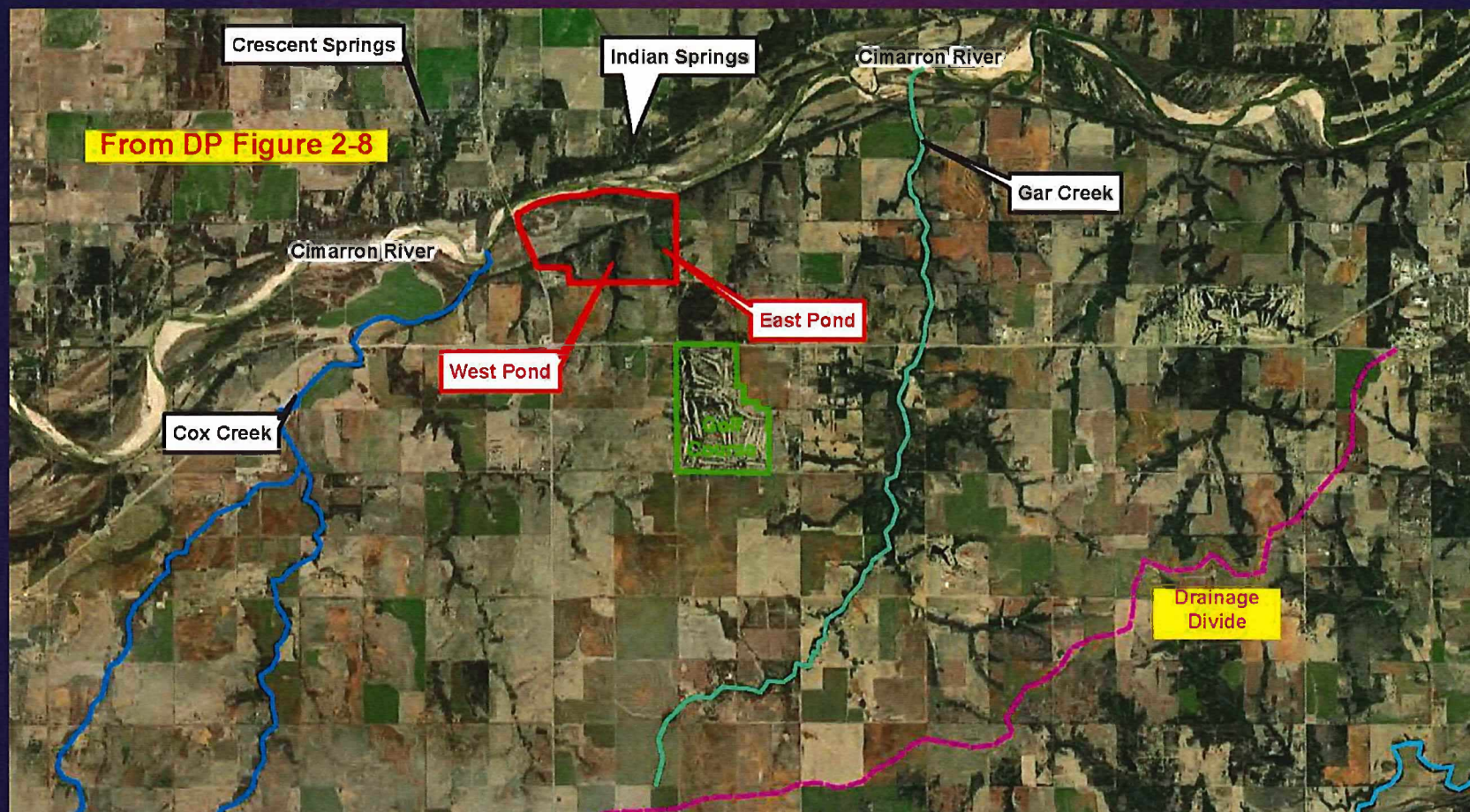
6

Seismic Events ≥ 3.0 within a 200-Mile Radius



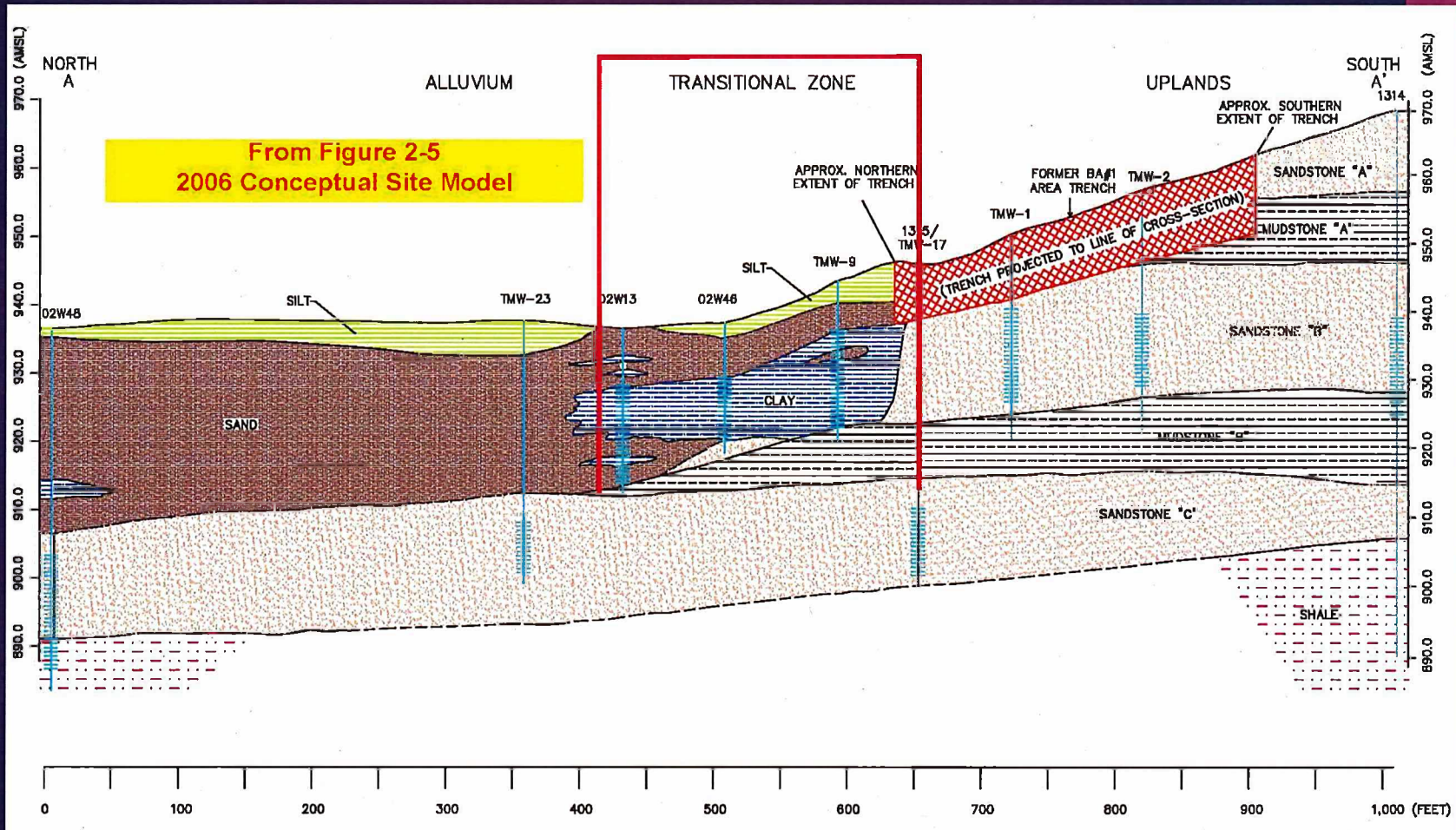
*Data through February 9, 2021

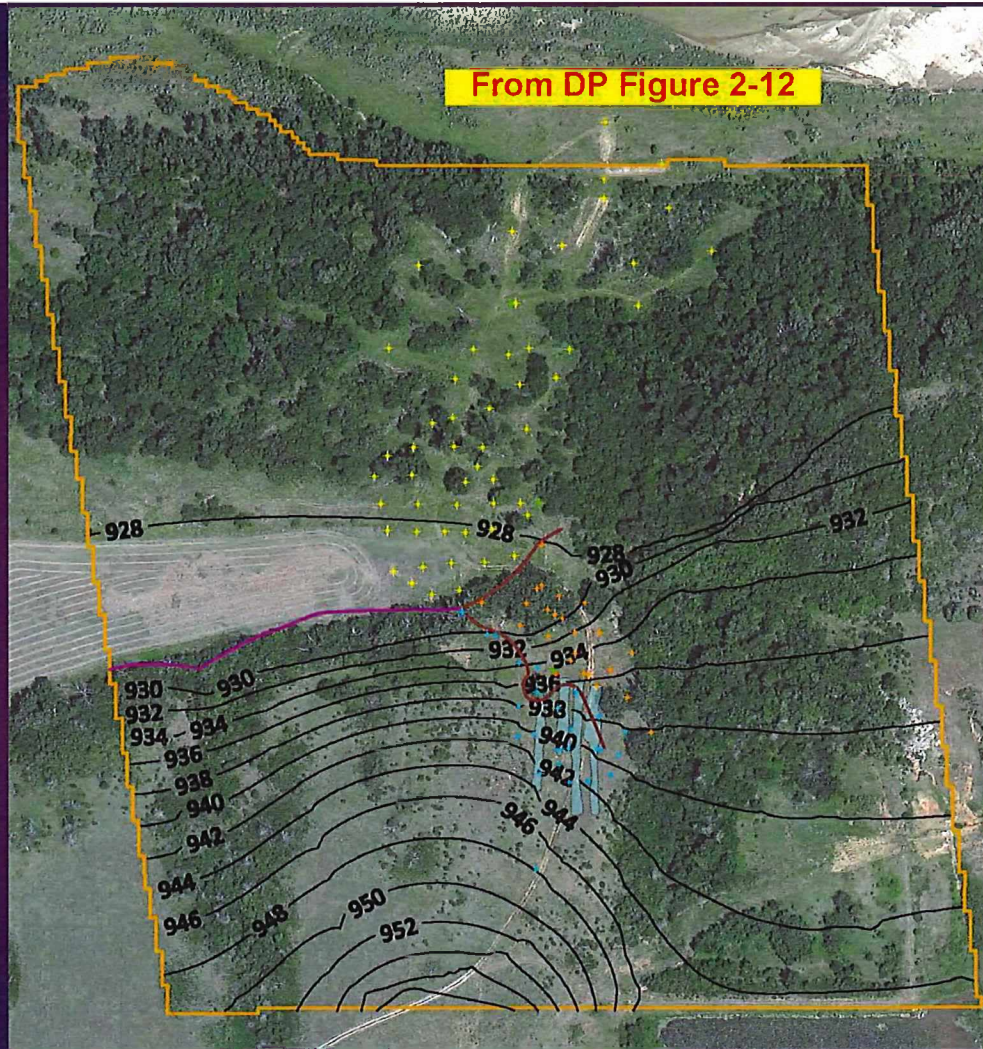
Surface Water Features



Site Hydrogeology

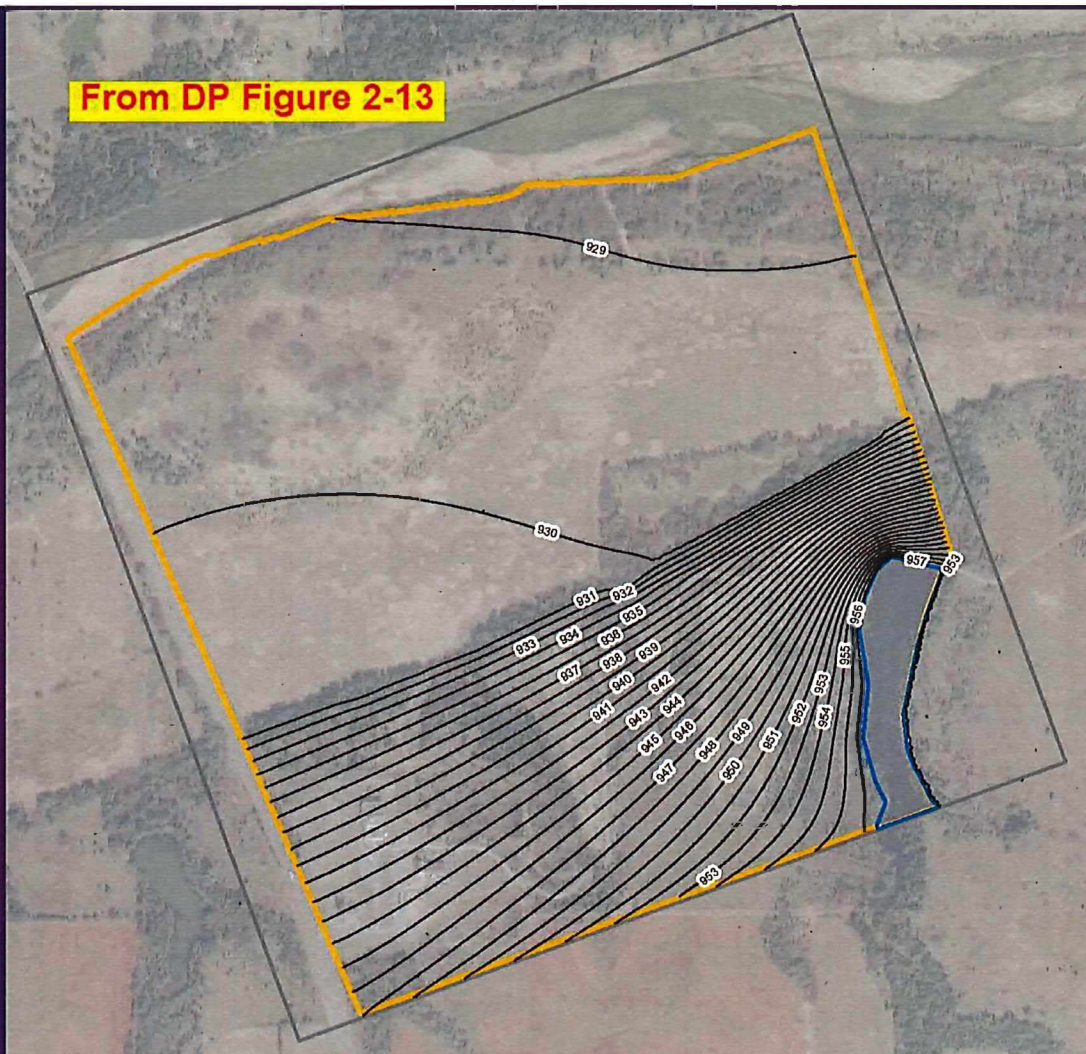
8





Burial Area #1
Groundwater
Model
Domain
and
Potentiometric
Surface

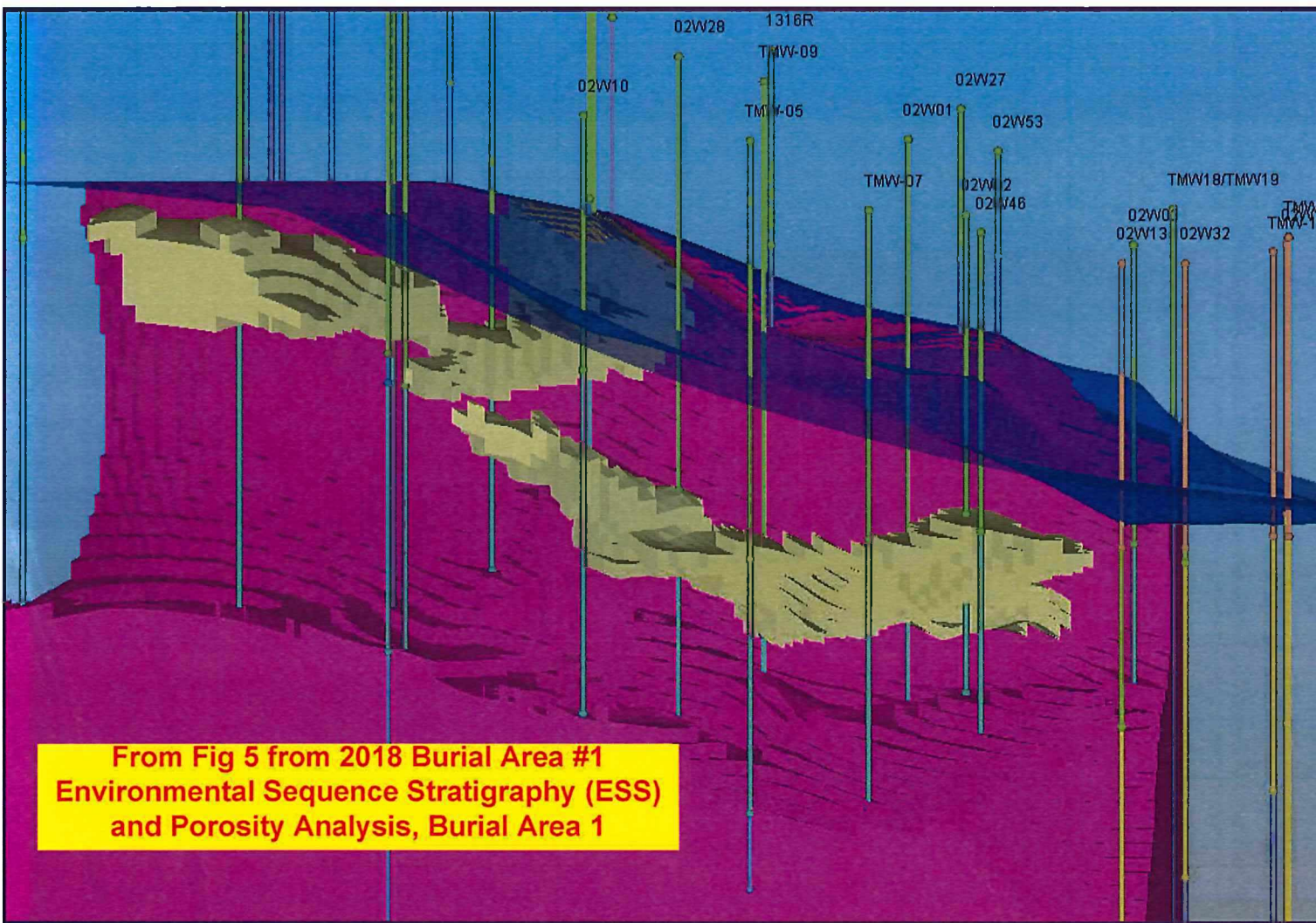
From DP Figure 2-13



Western Area
Groundwater
Model
Domain
and
Potentiometric
Surface

Western Area Groundwater Model Domain and Potentiometric Surface

From Fig 5 from 2018 Burial Area #1
Environmental Sequence Stratigraphy (ESS)
and Porosity Analysis, Burial Area 1



Distribution Coefficients for Uranium

2006 Column Test Results

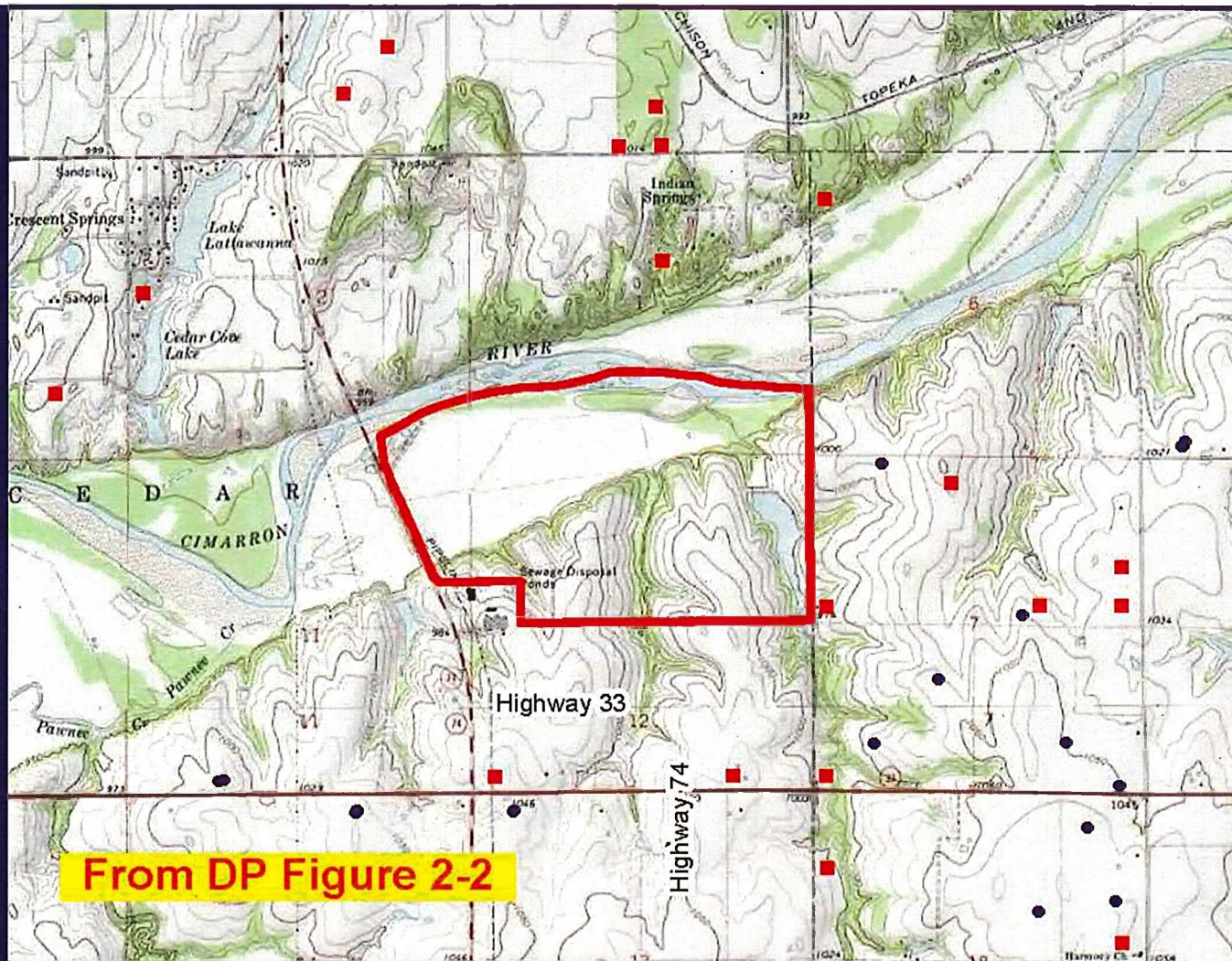
- Alluvial Sand – 0.5 mL/g
- Silt – 2 mL/g
- Clay – 3.4 mL/g

Values Used

- Transition Zone – 3.0 mL/g
- Alluvium – 2 mL/g
- Sandstone – 3.0 mL/g

Note: Detailed information on the determination and selection of K_d values used in the DP can be found in 7/5/2016 letter (ML20204A867).

Natural Resources – Water Wells and Oil & Gas Wells



DP Section 3 – Radiological Status of Facility

Structures

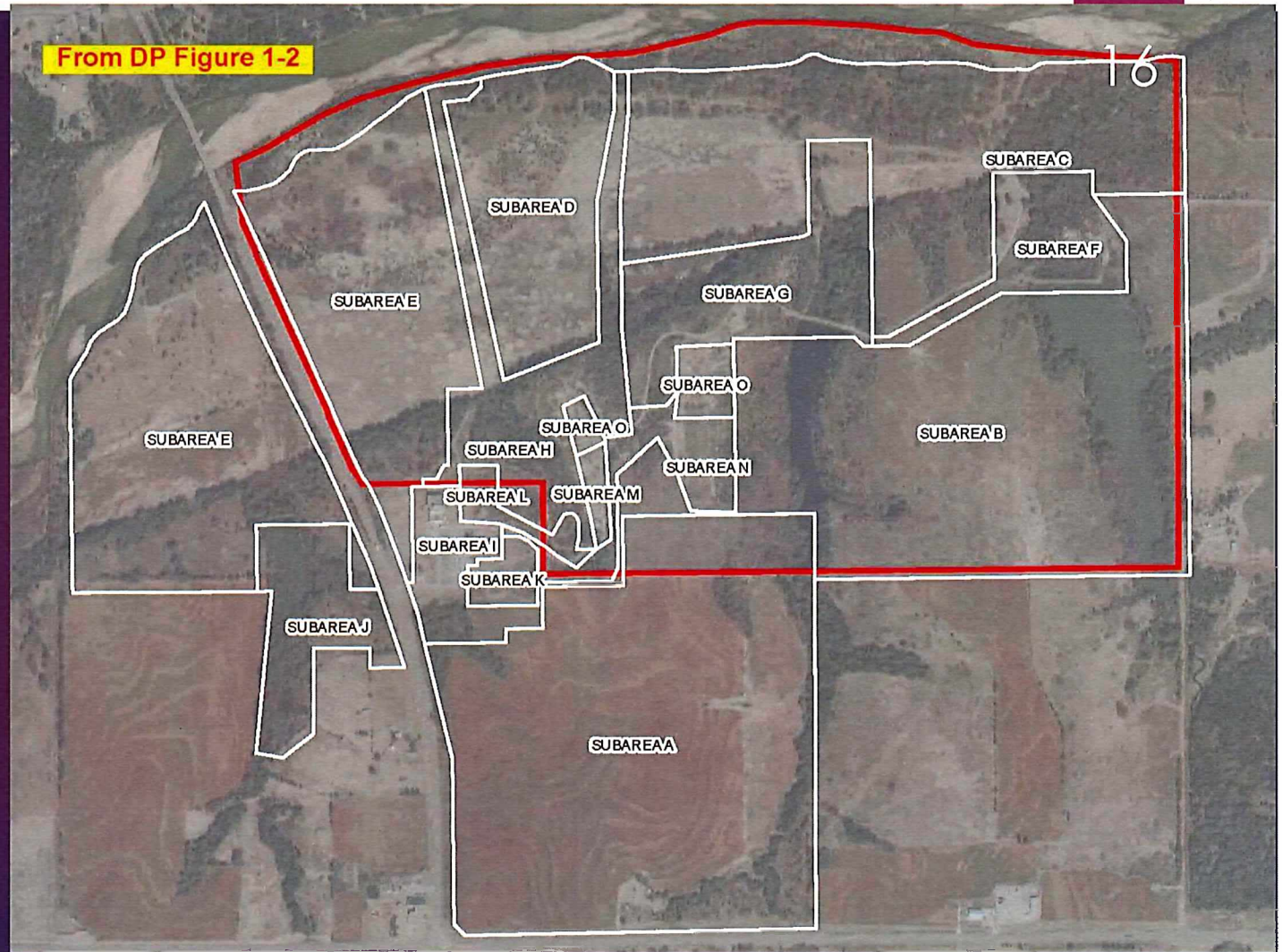
- All former processing buildings – released.
- CERT Office continues to be used.
- Routine surveys demonstrate that ongoing decommissioning activities don't impact the CERT Office.

Systems & Equipment

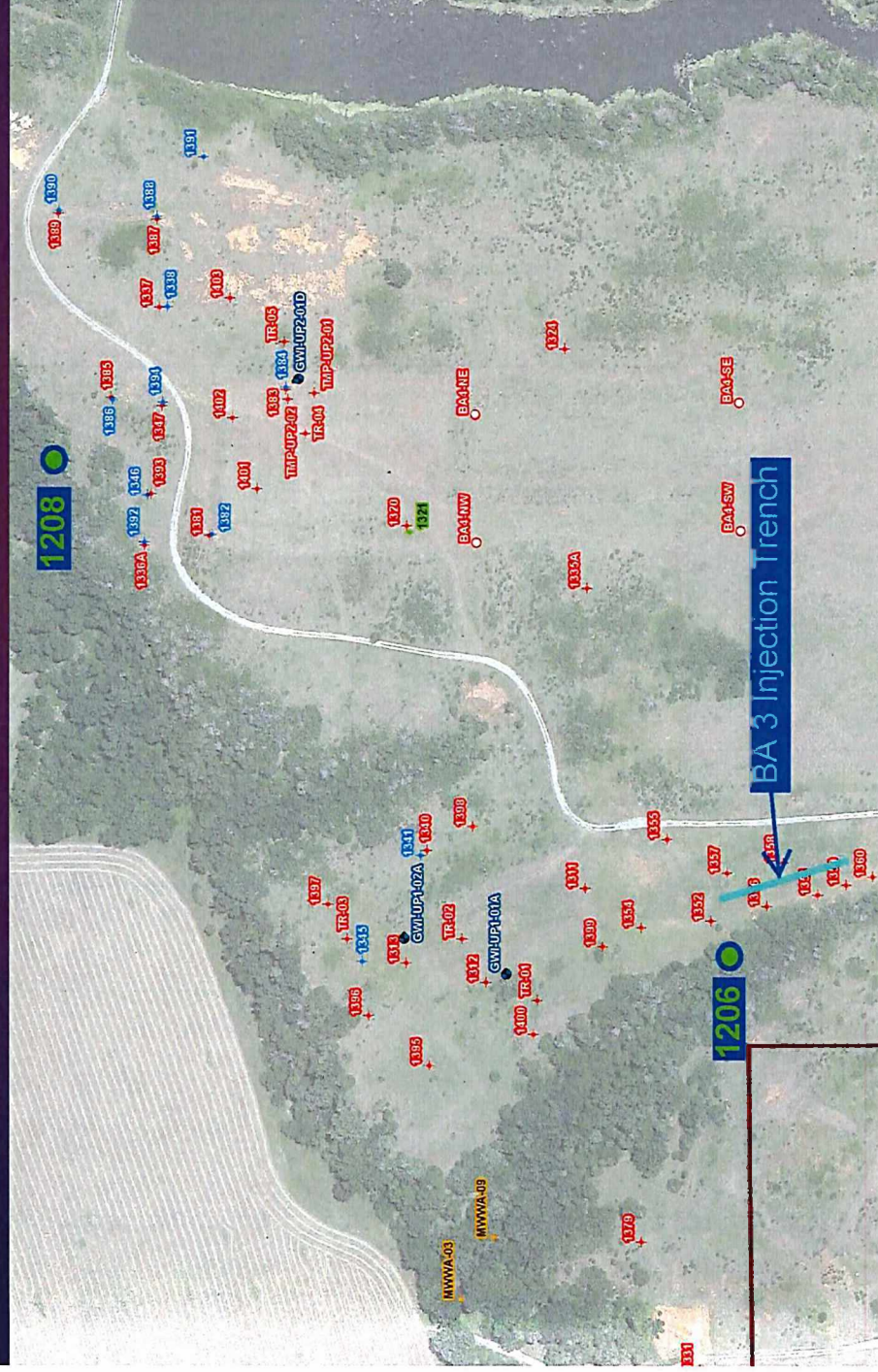
- There are no operating systems remaining on site.
- Release surveys are conducted on equipment that may become contaminated during use.
- Field equipment (e.g., excavators, loaders) that contacts subsurface material is pressure washed and surveyed prior to release from the site.
- Two plastic tanks and one concrete slab have been identified as contaminated and retained on site.

Surface & Subsurface Soil

- Final status surveys
- Confirmatory surveys
- Ongoing surveys
- Burial Area #4
- Subsurface soil in UP1 & UP2



Surface Water

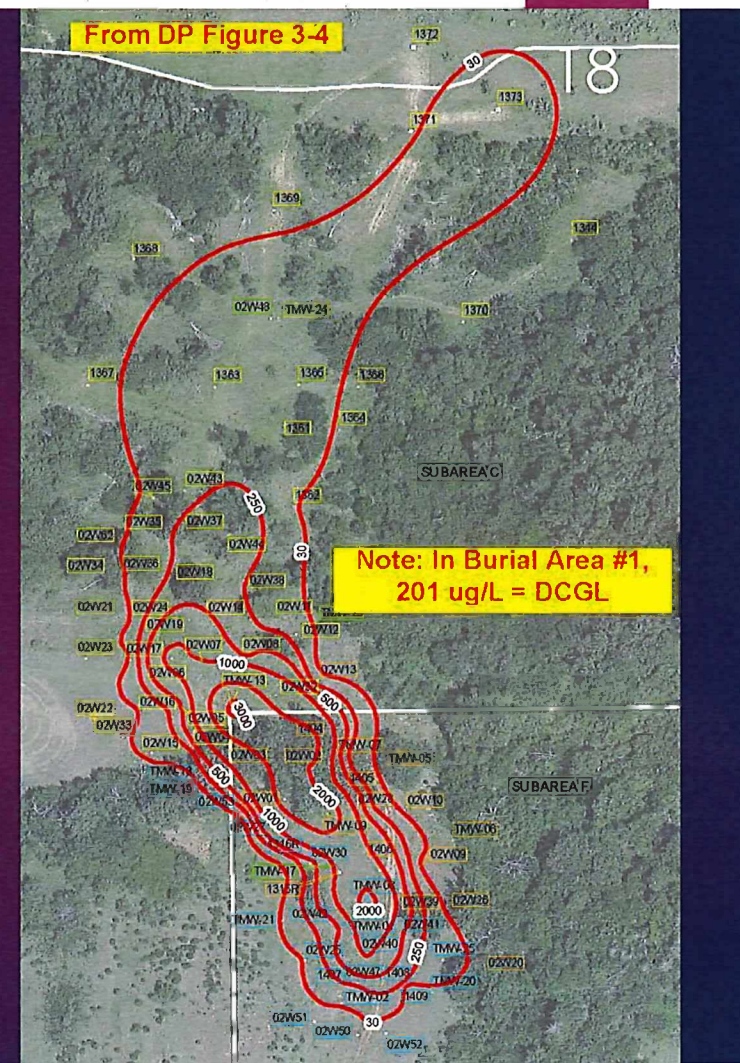
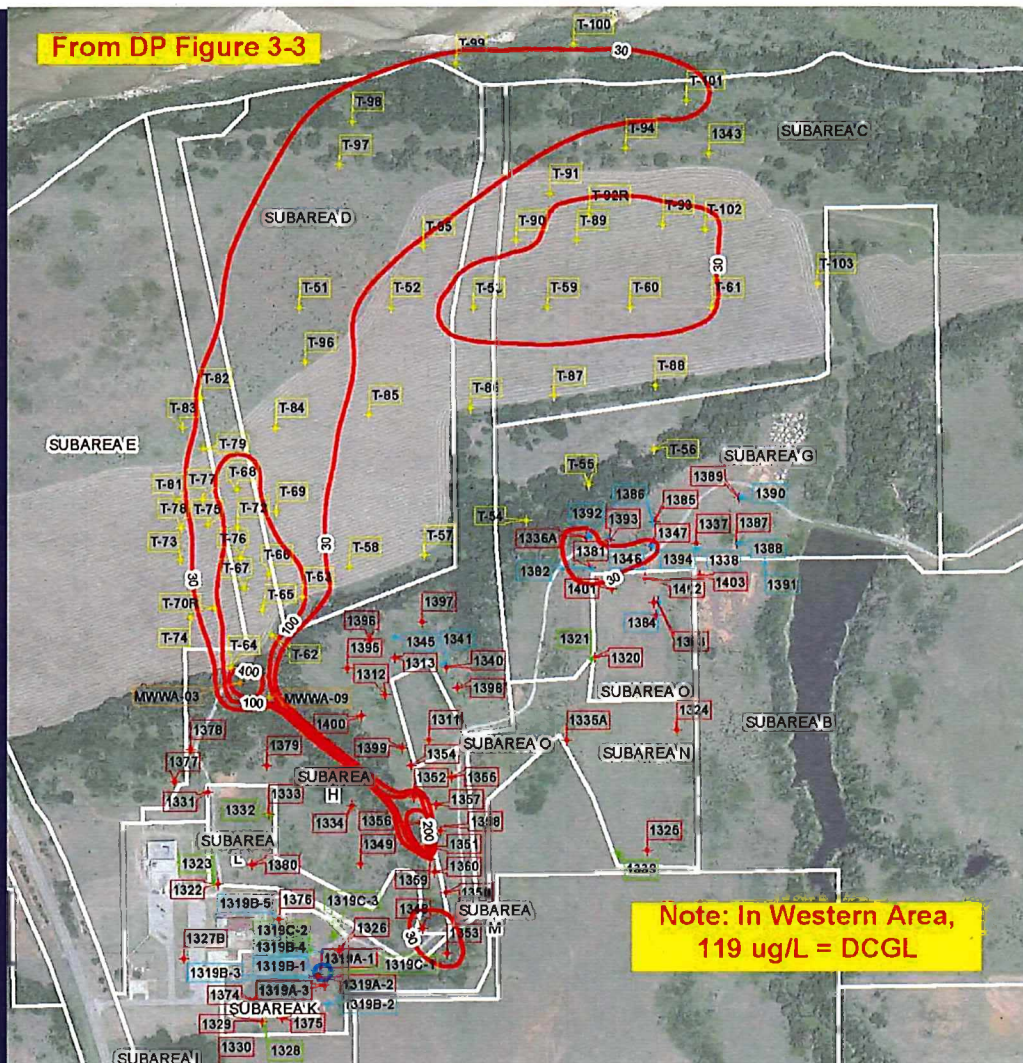


River – unpacted

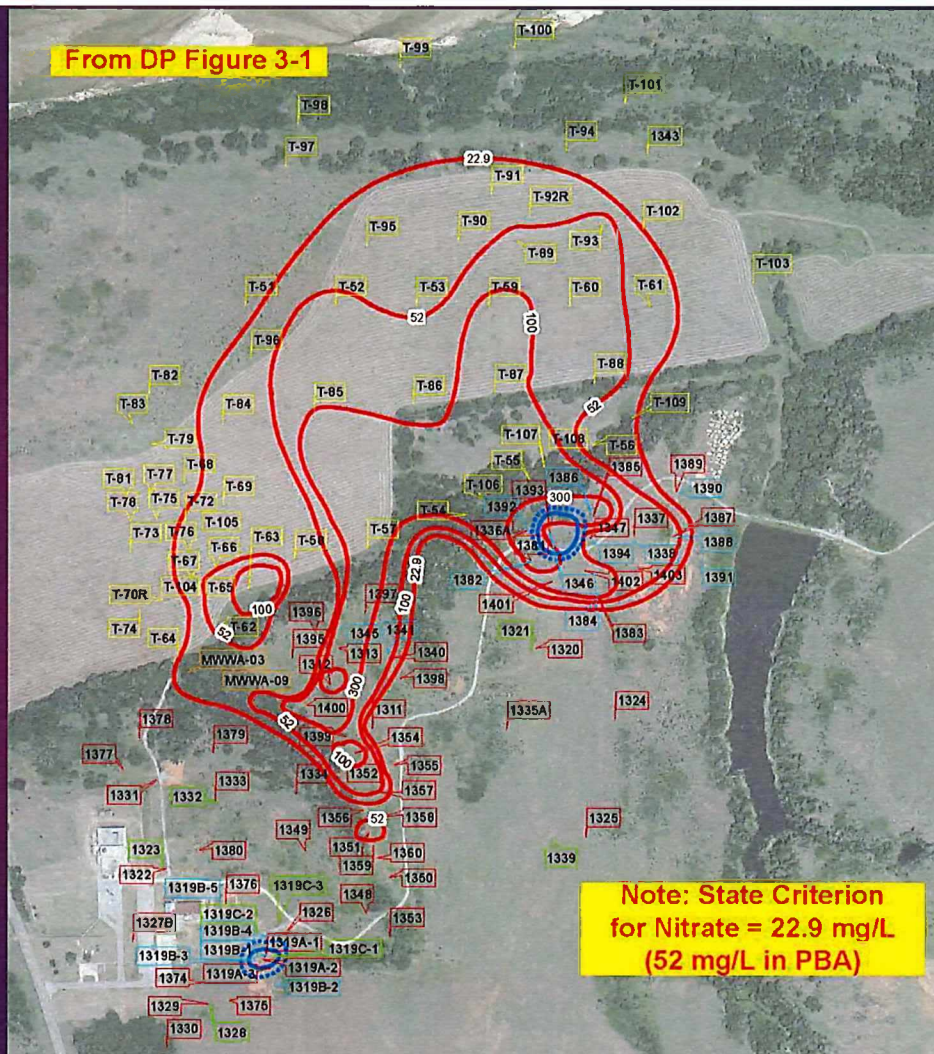
Ponds – unpacted

1206 – U > DCGL

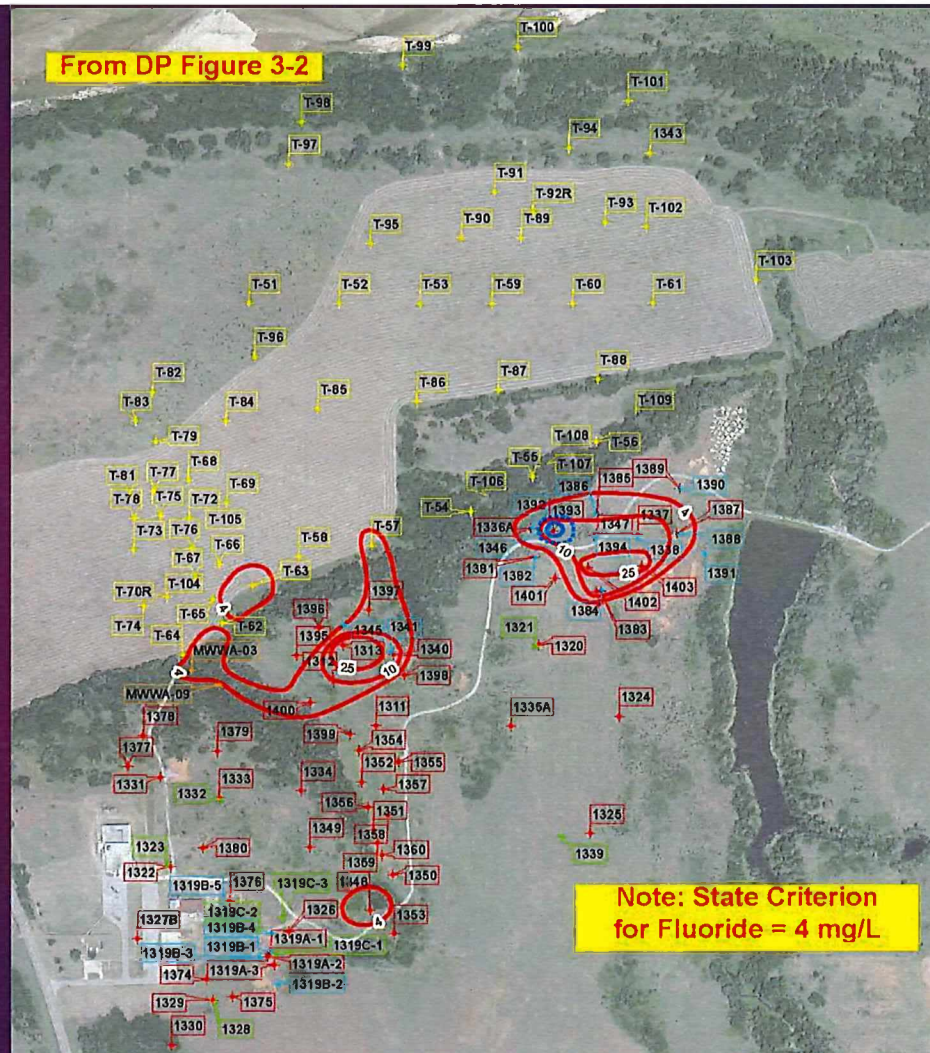
1208 – Tc-99 > MCL



19



20



DP Section 5 – Environmental Information

Already Addressed

- Land Use
- Geology & Soils
- Water Resources

Negligible Impact

- Transportation
- Air Quality
- Noise
- Socioeconomic
- Ecological Resources

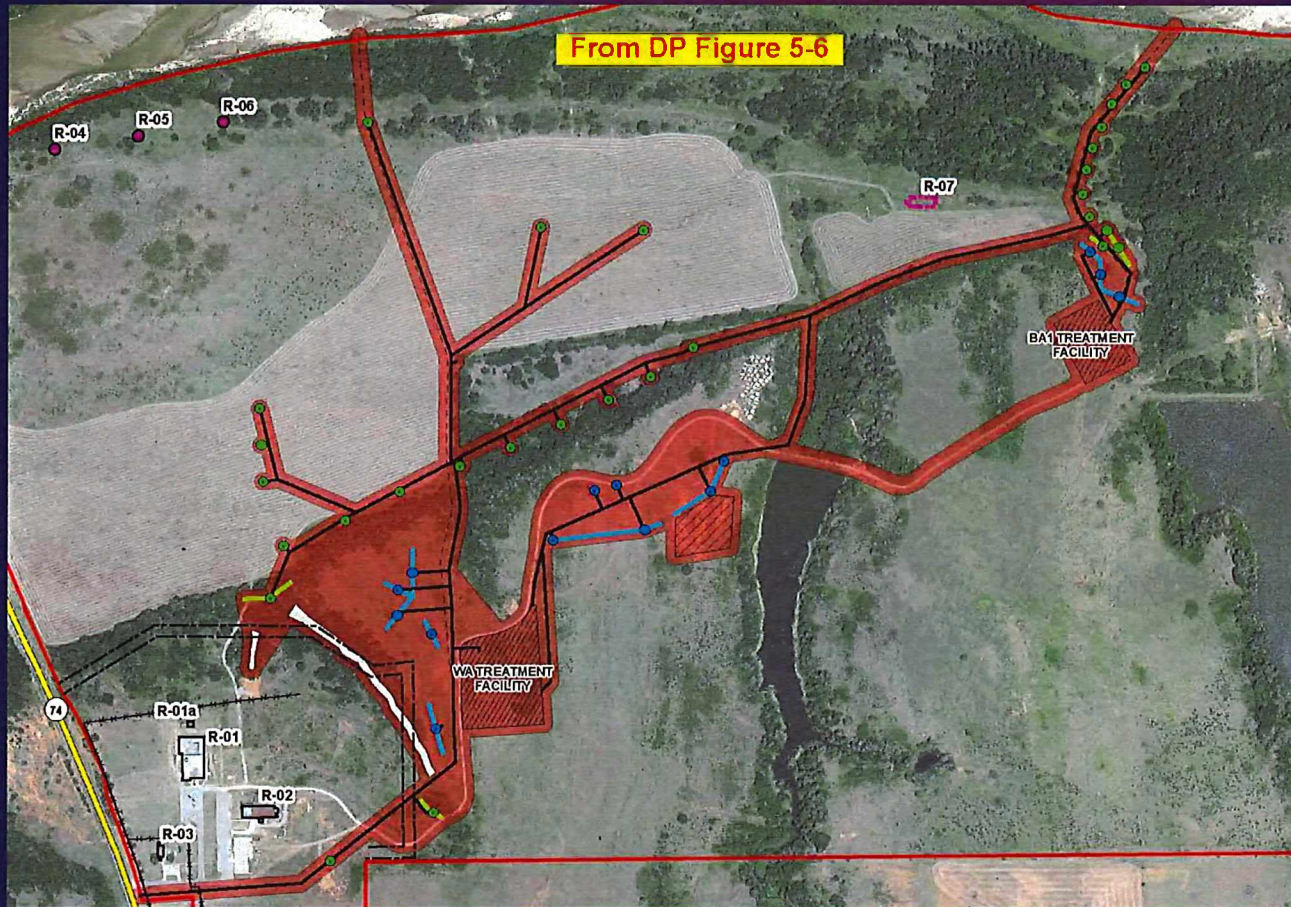
Addressed in This Presentation

- Historical & Cultural Resources
- Visual & Scenic Resources
- Public & Occupational Health

Historical & Cultural Resources

22

From DP Figure 5-6

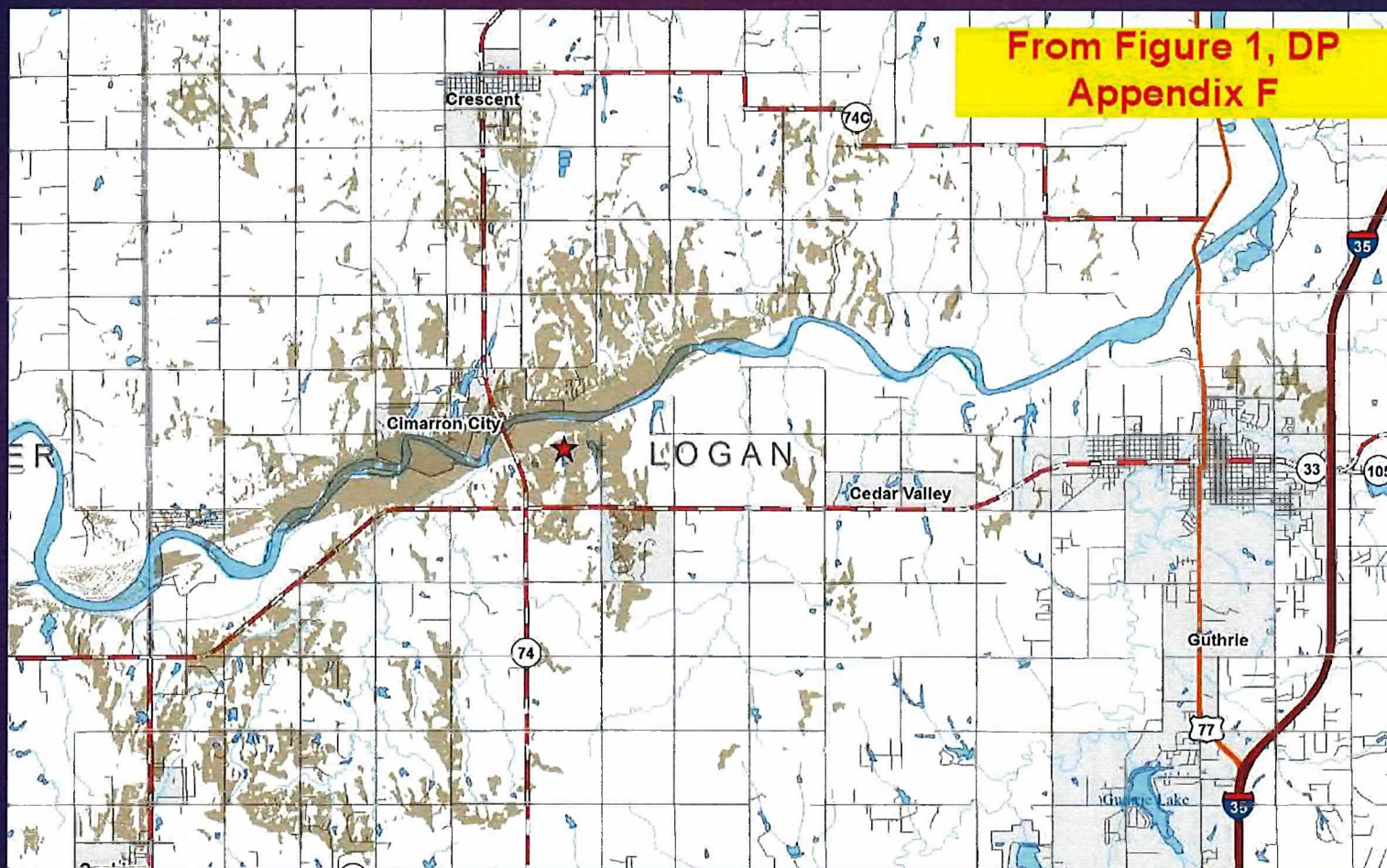


- R-01 (a) & (b) - Pu Plant
- R-02 - Warehouse
- R-03 - CERT Office
- R-04 - Diesel Pump
- R-05 - Diesel Pump
- R-06 - Diesel Pump
- R-07 - Corral & Cart

*Phase I Cultural Resources
Survey of the Cimarron
Environmental Response Trust
Property (ML20253A33)*

Visual & Scenic Resources

23



Public & Occupational Health

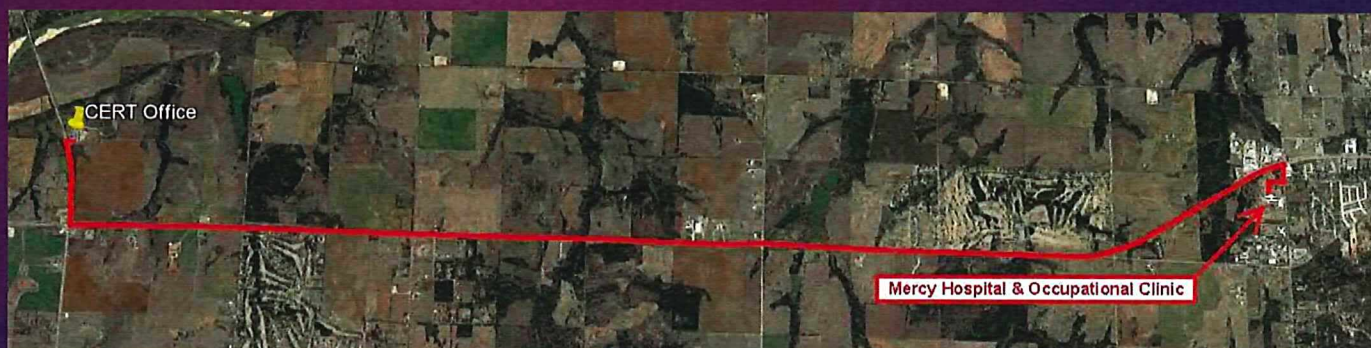
Public Exposure

No measurable exposure to members of the public during construction or operation.

Worker Exposure

Highest exposure is at resin vessels. At 1' from the fully loaded resin vessel, calculated exposure rate is $< 30 \mu\text{R/hr}$.

Potential exposure from extraction & injection, water treatment, and waste packaging and shipping activities combined will be $< 100 \text{ mrem/yr}$.



QUESTIONS??