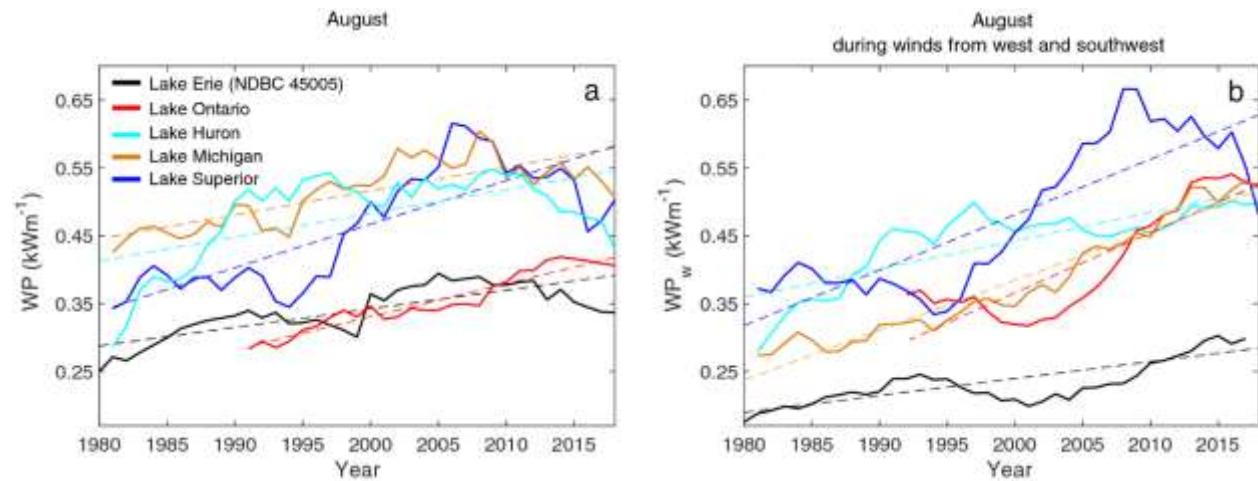


## Figure 2

From: [Increases in Great Lake winds and extreme events facilitate interbasin coupling and reduce water quality in Lake Erie](#)



Historical patterns in wave power in Great Lakes. 10 year moving average of wave power ( $WP$ ) during the August (**a**) and during August with the wind from south and southwest and ( $WP_w$ ; **b**). The dashed lines show the linear regression (statistical results provided in Table [S1](#)).