
**U. S. Nuclear Regulatory Commission
Draft Environmental Impact Statement for the Disposal of Mine
Waste at the United Nuclear Corporation Mill Site**

Public Comment Meetings

**Wednesday, December 2, 2020 –
4:00 PM (ET) 2:00 PM (MT)**

Event address:

<https://usnrc.webex.com>

Event number: 199 946 2983

Event passcode: UNCDEIS

Telephone Access

Phone number: 888-454-7496

Passcode: 7838183

**Wednesday, December 9, 2020 –
4:00 PM (ET) 2:00 PM (MT)**

Event address:

<https://usnrc.webex.com>

Event number: 199 047 2797

Event passcode: UNCDEIS

Telephone Access

Phone number: 888-454-7496

Passcode: 7838183

Public Comment Meeting on the Draft Environmental Impact Statement for the Disposal of Mine Waste at the United Nuclear Corporation Mill Site

December 2, 2020

December 9, 2020

Opening Remarks

John Tappert, Director
Division of Rulemaking, Environmental and
Financial Support

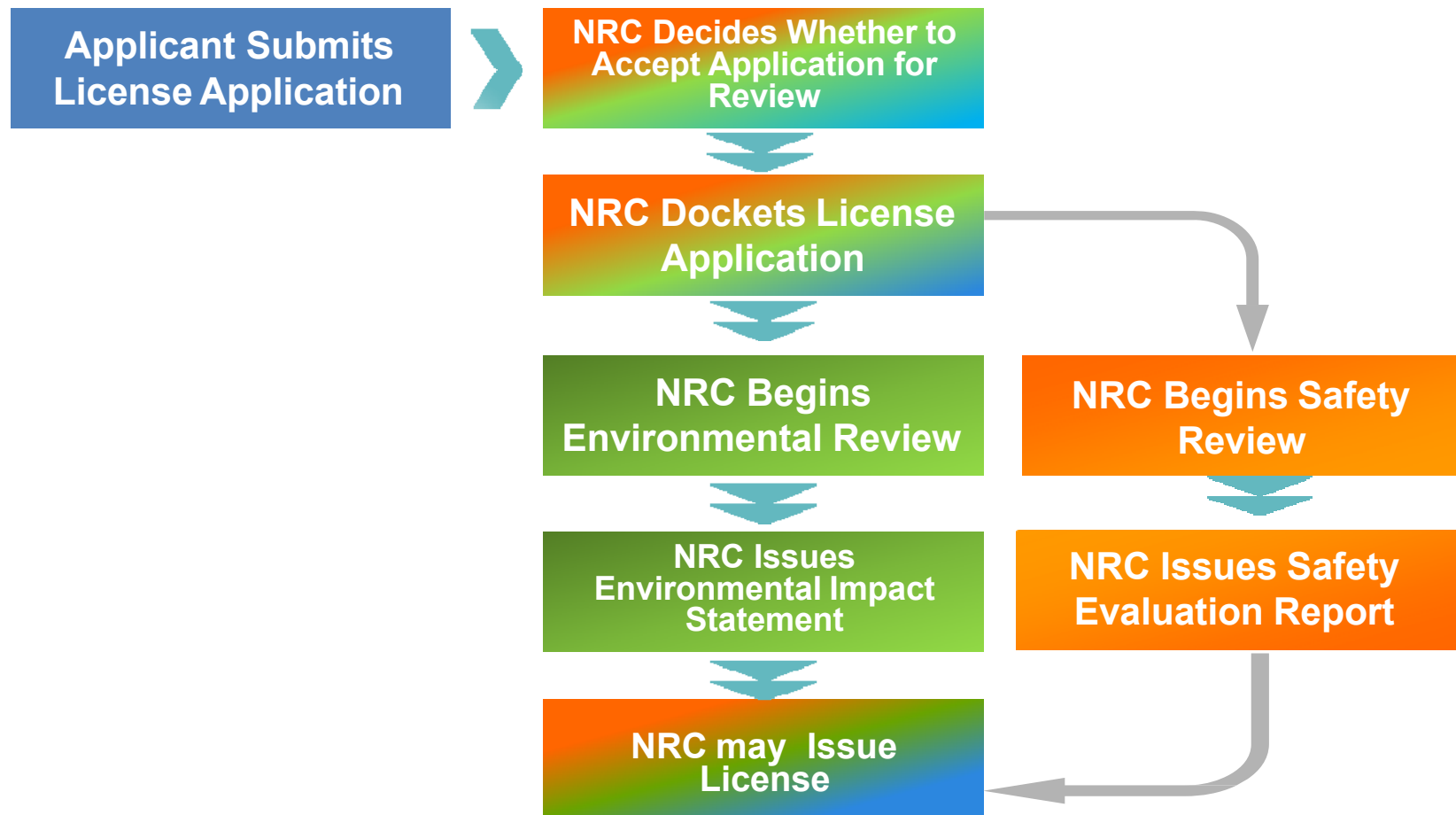
Meeting Overview

- NRC's Review Process
- Overview of UNC's License Amendment Application
- Public Scoping Comments
- NRC's Environmental Review Results
- Information Resources and Ways to Comment
- Public Comments

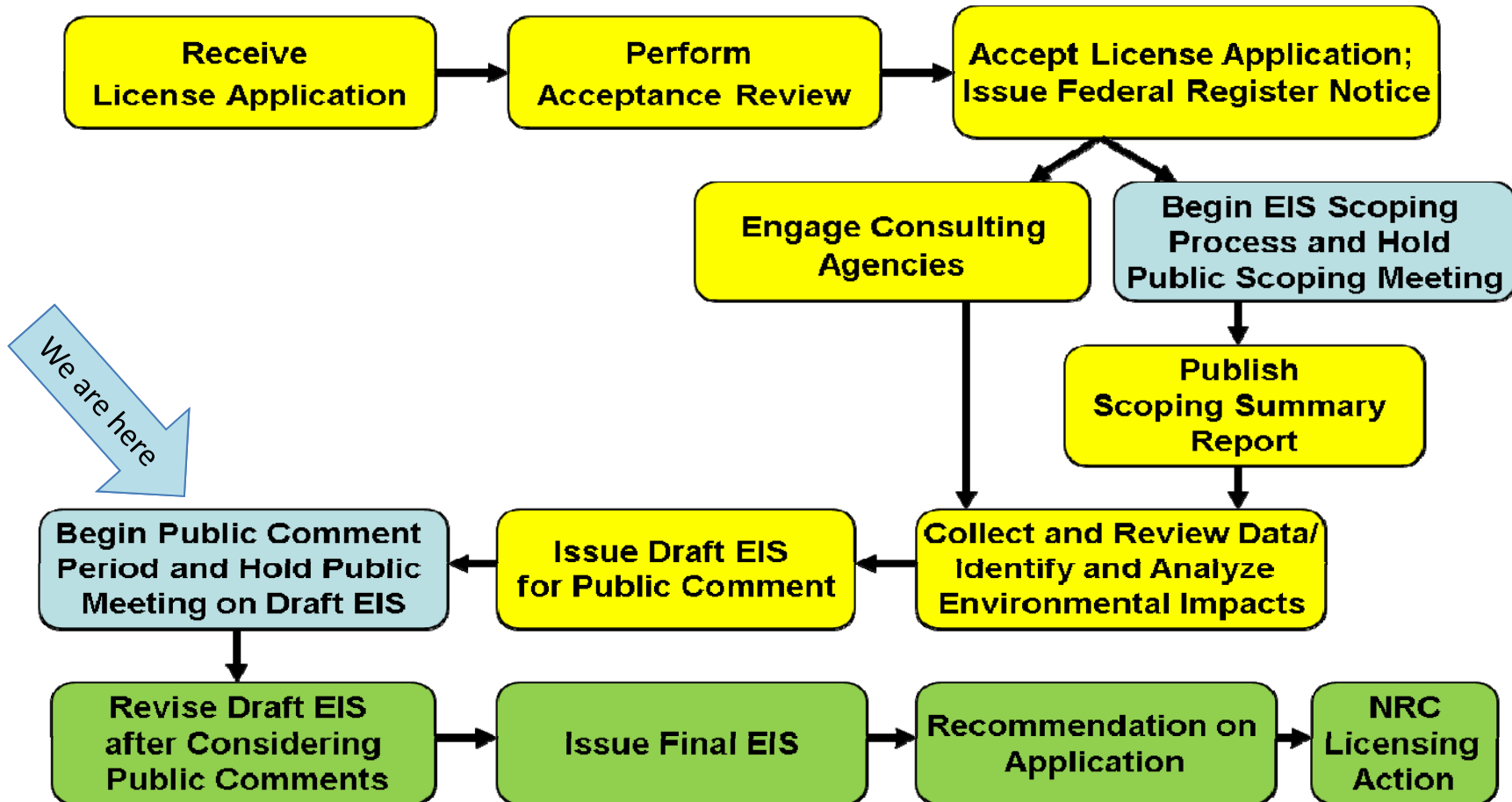
Purpose of the Meeting

To receive comments
on the Draft
Environmental Impact
Statement for the
UNC Mill Site License
Amendment
Application

NRC's Review Process



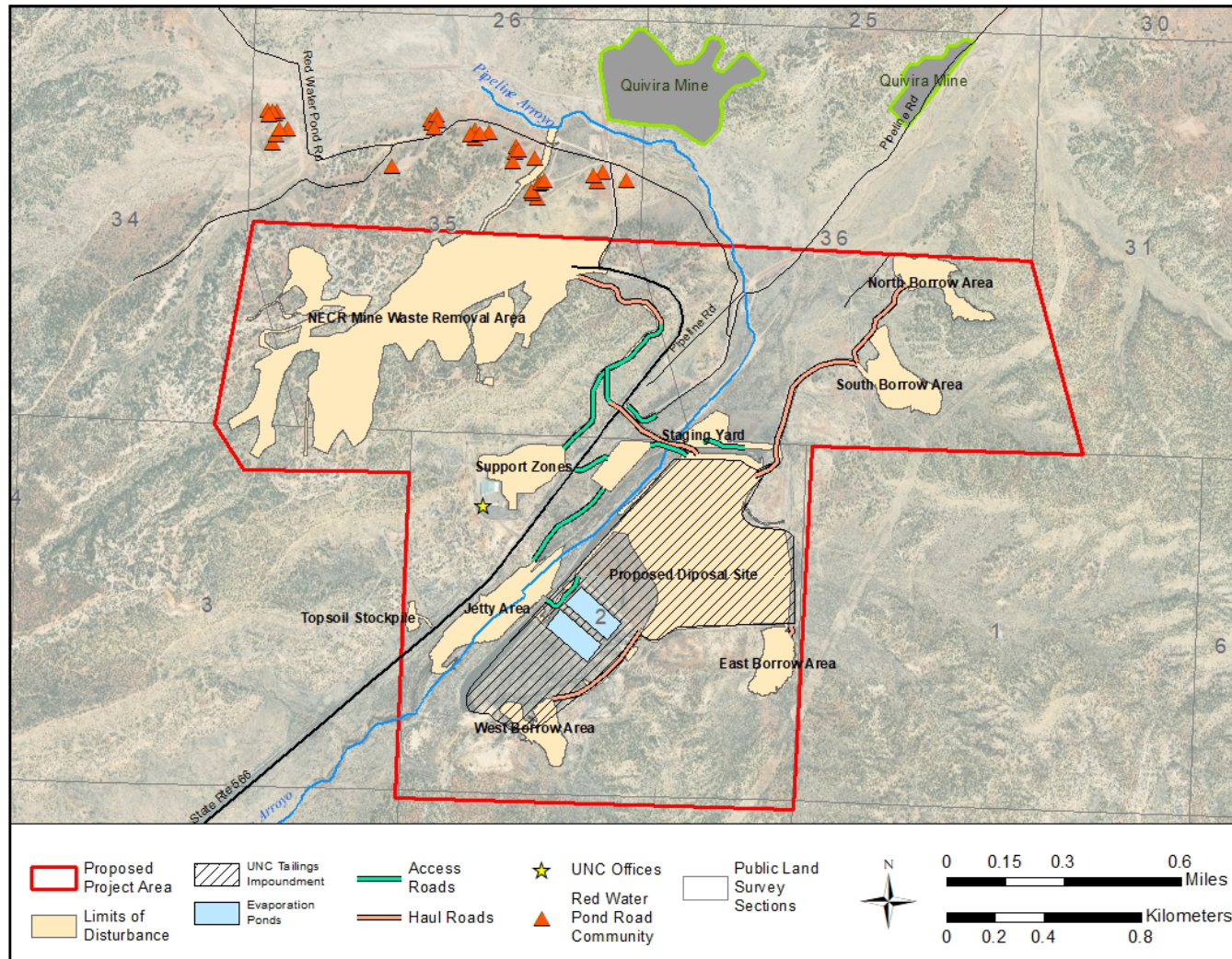
Environmental Review Process



License Amendment Application

- United Nuclear Corporation (UNC)/General Electric (GE) seeking to amend its NRC Source Material License (SUA-1475) for the UNC mill site
- If approved, would allow UNC/GE to transfer approximately 1,000,000 cubic yards of mine waste from the North East Church Rock mine site to the existing tailings impoundment at the mill site

Project Location



Scoping Process

- **Scoping Period**
 - February 8, 2019 – April 19, 2019
 - In-person meetings held in Gallup, NM (March 2019)
- **Scoping Summary Report**
 - <https://www.nrc.gov/docs/ML1933/ML19338E254.pdf>
- **Comments**
- **Transportation**
 - Volume of trucks crossing NM Highway 566 (frequent road closures)
- **Surface Water**
 - Downstream migration of radiological waste from the potential undercutting of the tailings impoundment (Pipeline Arroyo)
- **Environmental Justice**
 - Concerns that the proposed action represents an environmental injustice to minority or low-income populations

EIS Phases

- EIS evaluates impacts of three phases of the project
 - Construction
 - Surface disturbing activities, including excavation
 - Transfer
 - Loading and transport of waste from mine to mill
 - Closure
 - Reclamation and revegetation of disturbed areas including the evapotranspiration (ET) cover

Proposed Action and Alternatives

- Proposed action
- No-action alternative
 - NRC would not approve the license amendment request
- Secondary alternatives
 - Conveyor system instead of hauling waste via truck
 - Cover material from Jetty Area instead of the borrow areas

Results of NRC's Environmental Review

RESOURCE	IMPACT EVALUATION
Land Use	SMALL
Transportation	SMALL TO MODERATE
Geology and Soils	SMALL
Surface Water	SMALL TO MODERATE
Groundwater	SMALL
Ecology	SMALL (wildlife) SMALL TO MODERATE (vegetation)
Air Quality	SMALL (greenhouse gases) SMALL TO MODERATE (nongreenhouse gases)

ENVIRONMENTAL IMPACT LEVELS

SMALL – Environmental effects are not detectable or are so minor that they will neither destabilize nor noticeably alter any important attribute of the resource.

MODERATE – Environmental effects are sufficient to alter noticeably, but not to destabilize, important attributes of the resource.

LARGE – Environmental effects are clearly noticeable and are sufficient to destabilize important attributes of the resource.

Results of NRC's Environmental Review

RESOURCE	IMPACT EVALUATION
Noise	MODERATE
Historic and Cultural	SMALL to LARGE
Visual and Scenic	MODERATE
Socioeconomic	SMALL
Environmental Justice	Disproportionately high and adverse environmental impacts
Public and Occupational Health	SMALL
Waste Management	SMALL

Impact Evaluation

Environmental Justice

- Analysis of the human health and environmental impacts on low-income and minority populations
- Region of Influence (ROI), 20 miles from site including all of McKinley County
- Many of the block groups in the ROI are potentially affected minority populations and or low-income
- Historic mill operations
 - Dam failure
 - Groundwater contamination (ongoing corrective action plan)
- Closest communities to site are primarily Navajo, who may be impacted by
 - Traffic
 - Dust
 - Noise

Impact Evaluation

Water Resources

- Stormwater runoff and resulting erosion
- Stabilization work in Pipeline Arroyo (Jetty Area) to address potential future undercutting near existing tailings impoundment
- Improvements to stormwater drainage in existing drainage channel

Impact Evaluation

Historic and Cultural Resources

- 5 sites recommended as eligible for the National Register Historic Places
- Developing a programmatic agreement in coordination with EPA, Navajo Nation, and the New Mexico Historic Preservation Office

Ecological Resources

- No threatened or endangered species affected

Information Resources

- Draft Environmental Impact Statement
 - <https://www.nrc.gov/docs/ML2028/ML20289A621.pdf>
- Reader's Guide
 - <https://www.nrc.gov/docs/ML2029/ML20295A709.pdf>
- Application material and NRC project website
 - <https://www.nrc.gov/info-finder/decommissioning/uranium/united-nuclear-corporation-unc-.html>

SUBMIT COMMENTS BY **DECEMBER 28, 2020**

- **Oral comments at this meeting**
- **E-mail comments to:**
UNC-ChurchRockEIS.resource@nrc.gov
- **Leave Voicemail at:** 888-672-3425
- **Federal Rulemaking Web Site:** Go to <https://www.regulations.gov/> and search for Docket ID **NRC-2019-0026**.
- **Mail comments to:** Office of Administration, Mail Stop:TWFN-7-A60M, ATTN: Program Management, Announcements and Editing Staff, U.S. Nuclear Regulatory Commission, Washington, DC 20555-0001

Public Comments on the Draft Environmental Impact Statement