

LEGEND

- MITIGATING EQUIPMENT
- AVAILABLE BACKUP EQUIPMENT
- ASSUMED SINGLE FAILURE
- ROOM BOUNDARY
- EQUIPMENT POWER SUPPLY DEPENDENCE (DOES NOT SHOW CONDUIT ROUTING)
- B/C BREAK/CRACK LOCATION
- AFFECTED ROOM DATA (F/PSIG) (BLACK WITH NO DATA IF ROOM NOT AFFECTED)
- ROOMS INTERCONNECTED VIA NEG PRESS BOUND
- PROCESS VARIABLE MEASUREMENT F=FLOW, P=PRESS, Z=POSITION, ETC.
- MAIN CONTROL PANEL INPUT
- XXXX BLOWOUT PANEL
- BREAK FLOWPATH

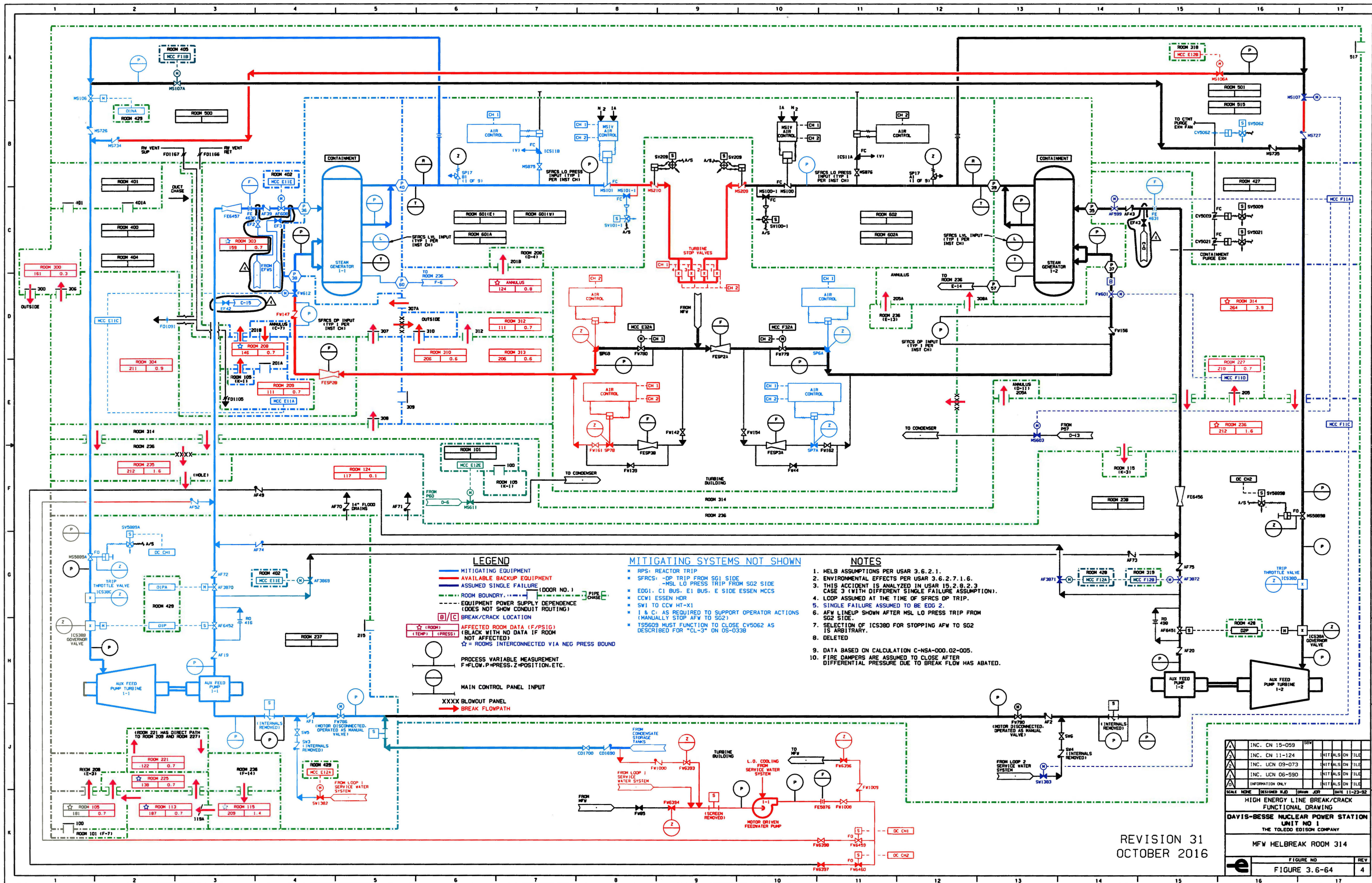
MITIGATING SYSTEMS NOT SHOWN

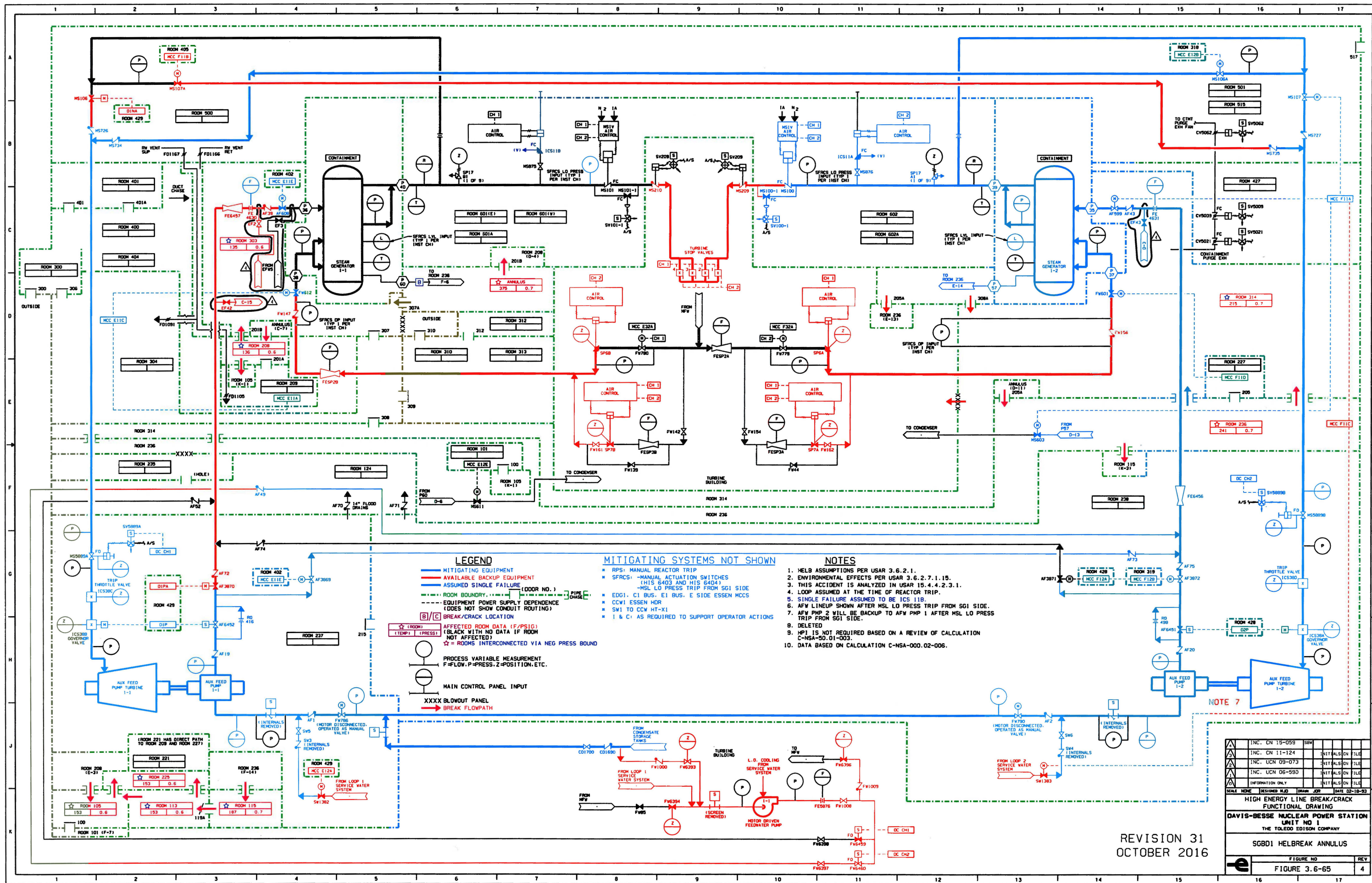
- RPS: REACTOR TRIP
- SFRCS: -DP TRIP FROM SG2 SIDE
- MSL LO PRESS TRIP FROM SG1 SIDE
- EDG2, D1 BUS, F1 BUS, F SIDE ESSEN MCCS
- CCW2 ESSEN HOR
- SW2 TO CCW HT-X2
- I & C: AS REQUIRED TO SUPPORT OPERATOR ACTIONS (MANUALLY STOP AFW TO SG1)

- NOTES**
- HEL3 ASSUMPTIONS PER USAR 3.6.2.1.
 - ENVIRONMENTAL EFFECTS PER USAR 3.6.2.7.1.6.
 - THIS ACCIDENT IS ANALYZED IN USAR 1B.2.8.2.3 CASE 3 (WITH DIFFERENT SINGLE FAILURE ASSUMPTION).
 - LOOP ASSUMED AT THE TIME OF SFRCS DP TRIP.
 - SINGLE FAILURE ASSUMED TO BE EDG 1.
 - AFW LINEUP SHOWN AFTER MSL LO PRESS TRIP FROM SG1 SIDE.
 - DELETED
 - TEMPERATURE DATA BASED ON CALCULATION C-NSA-000.02-005.
 - ROOM IGNORED FOR TEMPERATURE ANALYSIS.

INC. CN 15-059	INITIALS ON FILE
INC. CN 11-124	INITIALS ON FILE
INC. UCN 09-073	INITIALS ON FILE
INC. UCN 06-590	INITIALS ON FILE
INFORMATION ONLY	INITIALS ON FILE
SCALE: 1"=10'	DATE: 01-04-93
HIGH ENERGY LINE BREAK/CRACK FUNCTIONAL DRAWING	
DAVIS-BESSE NUCLEAR POWER STATION	
THE TOLSON EDITION COMPANY	
MFW HELBREAK ROOM 303	
FIGURE NO	REV
FIGURE 3.6-63	4

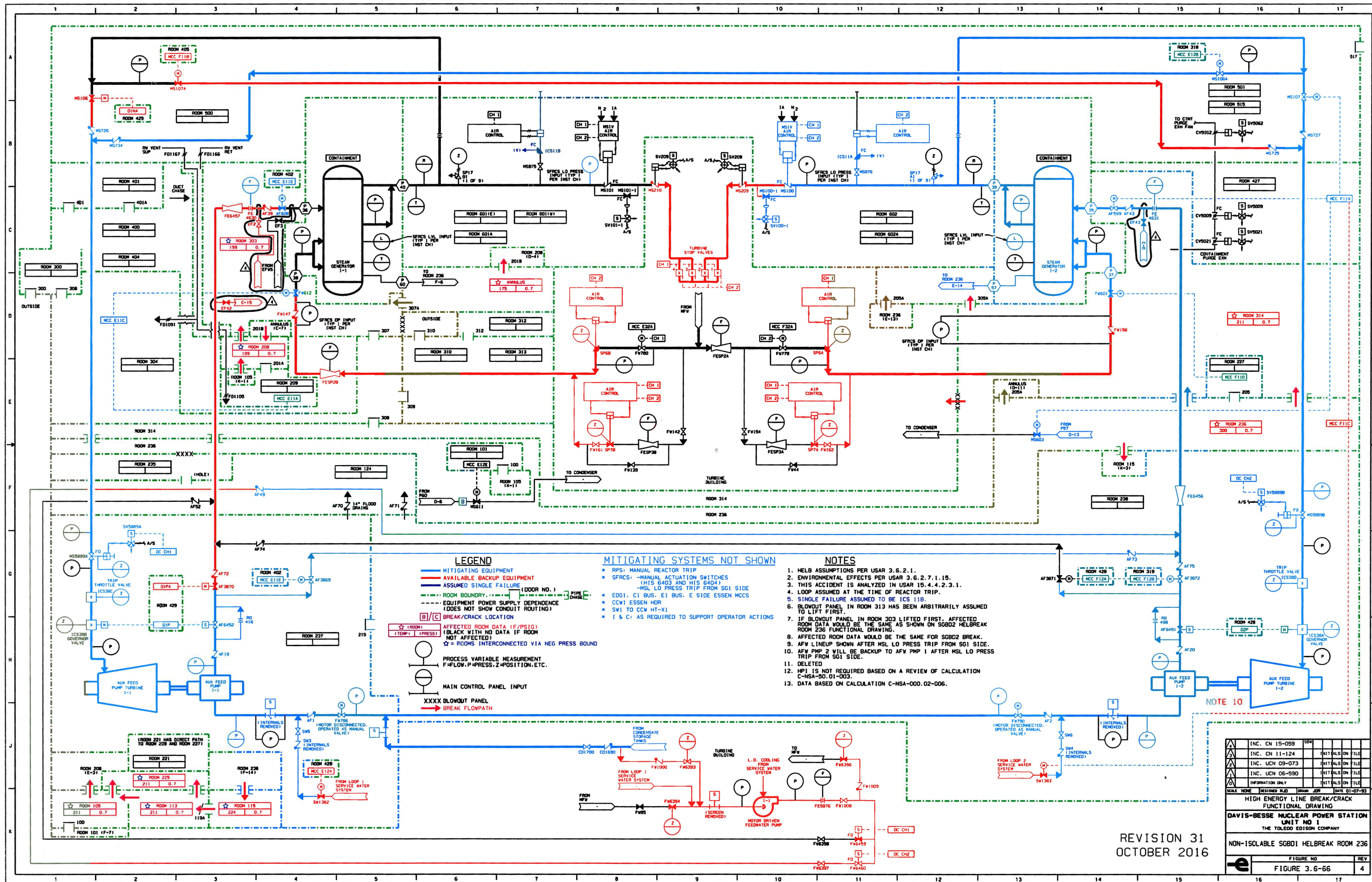
REVISION 31
OCTOBER 2016





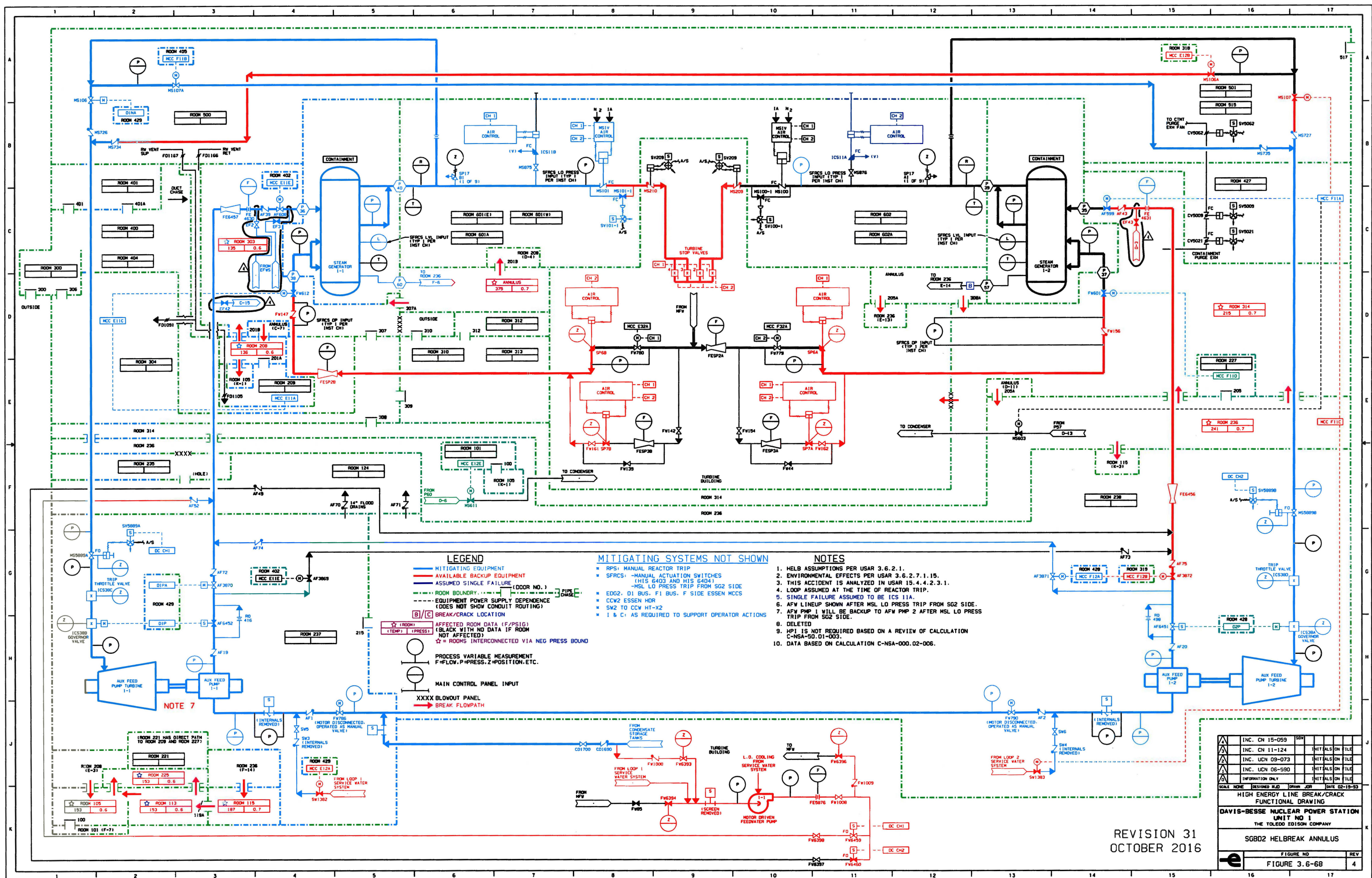
REVISION 31
OCTOBER 2016

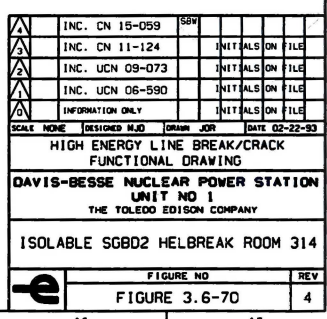
INC. CN 15-059	SW	INITIALS ON FILE
INC. CN 11-124	SW	INITIALS ON FILE
INC. UCN 09-073	SW	INITIALS ON FILE
INC. UCN 06-590	SW	INITIALS ON FILE
INFORMATION ONLY		INITIALS ON FILE
SCALE	DATE	DESIGNED BY
DATE	02-10-93	
HIGH ENERGY LINE BREAK/CRACK FUNCTIONAL DRAWING		
DAVIS-BESSE NUCLEAR POWER STATION UNIT NO. 1		
THE TOLEDO EDISON COMPANY		
SGBD1 HELGOLAND ANNULUS		
FIGURE NO.	REV	
FIGURE 3.6-65	4	



REVISION 31
OCTOBER 2016

INC. CN 15-059	SBW	INITIALS ON FILE
INC. CN 11-124		INITIALS ON FILE
INC. UCN 09-073		INITIALS ON FILE
INC. UCN 06-590		INITIALS ON FILE
INFORMATION ONLY		INITIALS ON FILE
SCALE	NONE	DESIGNED BY JON JON
DATE	01-07-93	
HIGH ENERGY LINE BREAK/CRACK FUNCTIONAL DRAWING		
DAVIS-BESSE NUCLEAR POWER STATION UNIT NO. 1		
THE TOLEDO EDISON COMPANY		
NON-ISOLABLE SGB01 HELBREAK ROOM 236		
FIGURE NO	REV	
FIGURE 3.6-66	4	





e	FIGURE NO	REV
	FIGURE 3.6-70	4