

PRECURSOR DESCRIPTION AND DATA

NSIC Accession Number: 116780

Date: August 10, 1976

Title: Gas Turbine Becomes Inoperable During Plant Trip at Millstone - 1

The failure sequence was:

1. Salt buildup on the 345 kv lines and insulators caused a loss of offsite power.
2. The gas turbine and diesel generator started, however, the gas turbine tripped. It was restarted but again tripped after about 8 minutes. Investigation revealed that the trips were due to improper alignment of the gas turbine generators auxiliaries.

Corrective action:

The gas turbine auxiliaries were aligned.

Design purpose of failed system or component:

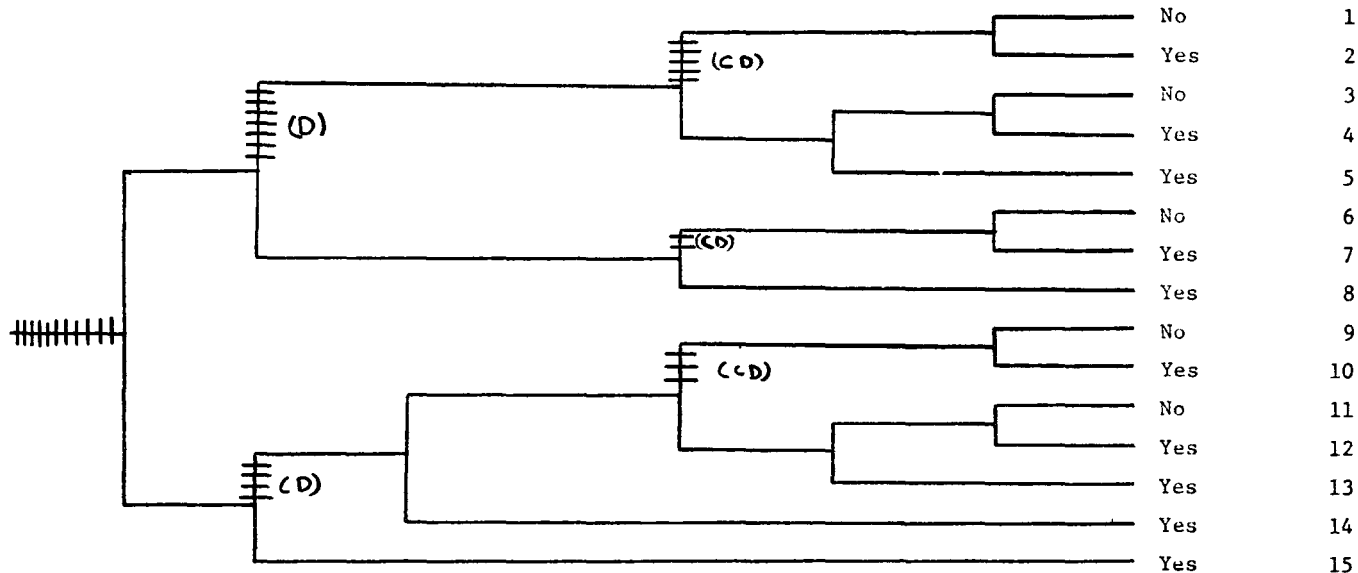
Emergency power provides (a.c.) electric power when offsite power sources are unavailable.

Unavailability of system per WASH 1400: * Emergency power: $10^{-3}/D$

Unavailability of component per WASH 1400: *

* Unavailabilities are in units of per demand D^{-1} . Failure rates are in units of per hour HR^{-1} .

Loss of Offsite Power	Reactor Scram	Diesel Start and Load	Reactor Made Sub- critical by the SBLCS Or Rods Are Manually Driven In	RCIC/HPCI Initiates	ADS/LPCI CS Initiates	Long Term Core Cooling	Potential Severe Core Damage	Sequence No.
-----------------------------	------------------	-----------------------------	---	------------------------	-----------------------------	---------------------------------	---------------------------------------	-----------------



CATEGORIZATION OF ACCIDENT SEQUENCE PRECURSORS

NSIC ACCESSION NUMBER: 116780

DATE OF LER: August 24, 1976

DATE OF EVENT: August 10, 1976

SYSTEM INVOLVED: Electric Power

COMPONENT INVOLVED: Gas turbine, Transmission line.

CAUSE: Weather, maintenance

SEQUENCE OF INTEREST:

ACTUAL OCCURRENCE: Gas Turbine Becomes Inoperable During Plant Trip.

REACTOR NAME: Millstone 1

DOCKET NUMBER: 245

REACTOR TYPE: BWR

DESIGN ELECTRICAL RATING: 660 MWe

REACTOR AGE: 5.9 yr

VENDOR: General Electric

ARCHITECT-ENGINEERS: Ebasco

OPERATORS: North East Nuclear Energy Company

LOCATION: Five miles SW of New London

DURATION: N/A

PLANT OPERATING CONDITION: Plant had just tripped.

SAFETY FEATURE TYPE OF FAILURE: (a) inadequate performance; (b) failed to start;
(c) made inoperable; (d) _____

DISCOVERY METHOD: Operational transient

COMMENT: