

# PRECURSOR DESCRIPTION AND DATA

NSIC Accession Number: 150051

Date: May 30, 1979

Title: Failure of Two Diesel Generators at Dresden 2

The failure sequence was:

1. The unit 2 diesel generator had failed for reasons unspecified.
2. An operability test of unit 2/3 was immediately performed, however, it failed to start.
3. The reactor was placed in cold shutdown.

Corrective action:

1. The starting logic was modified.

Design purpose of failed system or component:

Emergency Power provides a.c. power when offsite power is unavailable.

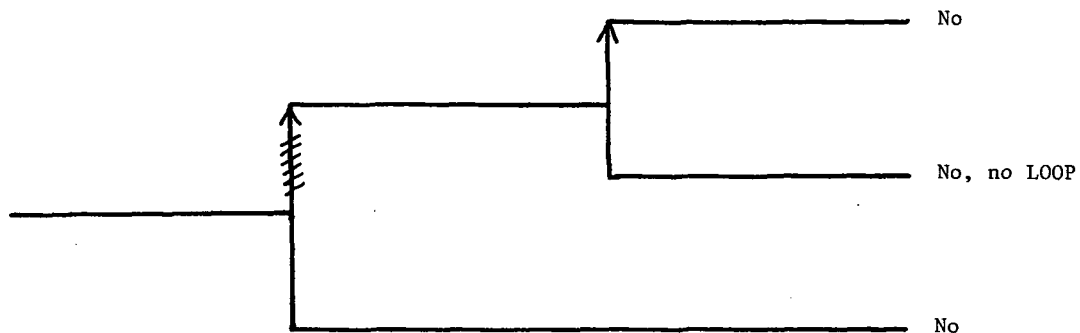
Unavailability of system per WASH 1400: \*Emergency Power:  $1 \times 10^{-3}/D$

Unavailability of component per WASH 1400: \* Diesel Generator Failure to Start:  
 $3 \times 10^{-3}/D$

---

\*Unavailabilities are in units of per demand  $D^{-1}$ . Failure rates are in units of per hour  $HR^{-1}$ .

Diesel Generator #2 Had Failed	An Operability Test Of Unit 2/3 Also Failed	The Reactor Was Placed In Cold Shutdown	Potential Severe Core Damage
-----------------------------------	--	--	---------------------------------------



NSIC 150051 — Actual Occurrence of Failure of Two Diesels at Dresden 2



CATEGORIZATION OF ACCIDENT SEQUENCE PRECURSORS

NSIC ACCESSION NUMBER: 150051

DATE OF LER: June 12, 1979

DATE OF EVENT: May 30, 1979

SYSTEM INVOLVED: Emergency Power

COMPONENT INVOLVED: Diesel Generators

CAUSE: Failure of the air starter motor

SEQUENCE OF INTEREST: Loss of offsite power

ACTUAL OCCURRENCE: Failure of two diesels

REACTOR NAME: Dresden 2

DOCKET NUMBER: 50-237

REACTOR TYPE: BWR

DESIGN ELECTRICAL RATING: 794 MWe

REACTOR AGE: 9.4 yr

VENDOR: General Electric

ARCHITECT-ENGINEERS: Sargent and Lundy

OPERATORS: Commonwealth Edison

LOCATION: Nine miles East of Morris, Ill.

DURATION: 360(a) hours

SAFETY FEATURE TYPE OF FAILURE: (a) inadequate performance; (b) failed to start;  
(c) made inoperable; (d) \_\_\_\_\_

DISCOVERY METHOD: Test

COMMENT: