

June 27, 1997

Mr. Richard D. Porco, Senior Director
Ellis & Watts
Division of Dynamics Corporation of America
4400 Glen Willow Lake Lane
Batavia, OH 45103

SUBJECT: ELLIS & WATTS LETTER OF MAY 9, 1997, REGARDING DEDICATION PROCEDURE ENG-109

Dear Mr. Porco:

We have reviewed your letter of May 9, 1997, in which you asked the NRC whether changes were warranted to Ellis & Watts (E&W) procedure ENG-109 regarding identification of materials of construction as critical characteristics. Your request was based upon a May 1, 1997, letter to E&W from the Tennessee Valley Authority (TVA) requesting you to revise ENG-109 to indicate that materials may not always be a critical characteristic. While we regret that we cannot respond to your specific questions regarding revision of your procedure ENG-109, the attached document "NRC Commercial Grade Procurement and Dedication Workshop," dated April 21 and 22, 1993, addresses the NRC's approach to assessing the identification and verification of critical characteristics. In addition, we provide the following information.

Criterion III of Appendix B to 10 CFR Part 50, "Design Control," requires, in part, that measures shall be established for the selection and review for suitability of application of materials, parts, equipment, and processes that are essential to the safety-related functions of the structures, systems and components. Based on the above criterion, the licensee or supplier is responsible for identifying the design, material, and performance (critical) characteristics that have a direct effect on the item's ability to accomplish its safety function. There may be instances where licensees or suppliers could technically justify that a material is not a critical characteristic. In such instances, justification needs to be based on the application and environment of the item being dedicated and supported by purchaser documentation.

Sincerely,

(Original Signed By)

Robert M. Gallo, Chief
Special Inspection Branch
Division of Inspection and Support Programs
Office of Nuclear Reactor Regulation

ENG 109
11

Docket: 99901308

9707080122 970627
PDR GA999 EMV*****
99901308 PDR

Distribution

HChristensen, RII
MLesser, RII
PSIB R/F
PUBLIC 070046

JJaudon, RII
CSmith, RII
Central Files
Docket Files

IDENT 73 VENDOR INST

*Previously concurred

DOCUMENT NAME: G:\GAUTAM\E&WPROC1.RES

To receive a copy of this document, indicate in the box: "C" = Copy without enclosures

"E" = Copy with enclosures "N" = No copy

OFFICE	PSIB:DISP	E	PSIB:DISP	DRCH:HQMB	OGC	PSIB:DISP
NAME	ASGautam		GCCwalina	SCBlack		RMGallo
DATE	06/09/97*		06/10/97*	06/17/97*	06/18/97*	06/24/97
OFFICE	DISP:ARR					
NAME	PGillespie					
DATE	06/11/97					

OFFICIAL RECORD COPY

GA999 (99901308)



UNITED STATES
NUCLEAR REGULATORY COMMISSION

WASHINGTON, D.C. 20555-0001

June 27, 1997

Mr. Richard D. Porco, Senior Director
Ellis & Watts
Division of Dynamics Corporation of America
4400 Glen Willow Lake Lane
Batavia, OH 45103

SUBJECT: ELLIS & WATTS LETTER OF MAY 9, 1997, REGARDING DEDICATION PROCEDURE
ENG-109

Dear Mr. Porco:

We have reviewed your letter of May 9, 1997, in which you asked the NRC whether changes were warranted to Ellis & Watts (E&W) procedure ENG-109 regarding identification of materials of construction as critical characteristics. Your request was based upon a May 1, 1997, letter to E&W from the Tennessee Valley Authority (TVA) requesting you to revise ENG-109 to indicate that materials may not always be a critical characteristic. While we regret that we cannot respond to your specific questions regarding revision of your procedure ENG-109, the attached document "NRC Commercial Grade Procurement and Dedication Workshop," dated April 21 and 22, 1993, addresses the NRC's approach to assessing the identification and verification of critical characteristics. In addition, we provide the following information.

Criterion III of Appendix B to 10 CFR Part 50, "Design Control," requires, in part, that measures shall be established for the selection and review for suitability of application of materials, parts, equipment, and processes that are essential to the safety-related functions of the structures, systems and components. Based on the above criterion, the licensee or supplier is responsible for identifying the design, material, and performance (critical) characteristics that have a direct effect on the item's ability to accomplish its safety function. There may be instances where licensees or suppliers could technically justify that a material is not a critical characteristic. In such instances, justification needs to be based on the application and environment of the item being dedicated and supported by purchaser documentation.

In accordance with 10 CFR 2.790 of the NRC's "Rules of Practice," a copy of this letter will be placed in the NRC's Public Document Room (PDR).

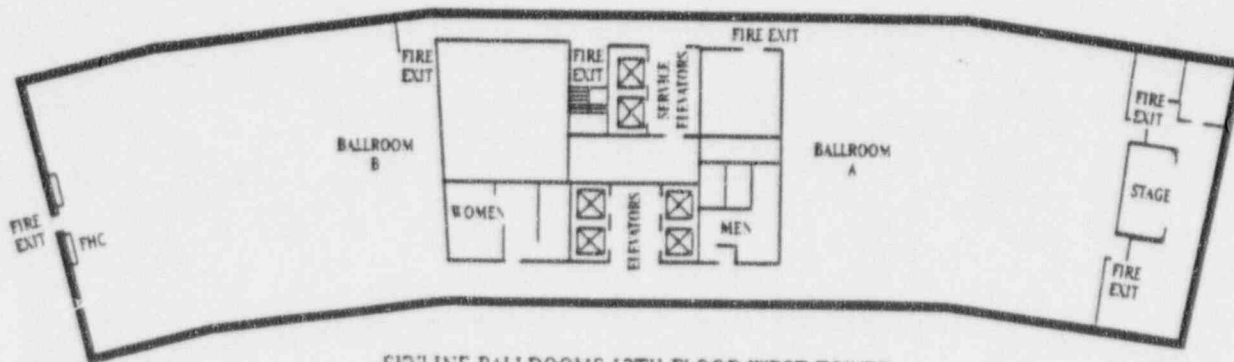
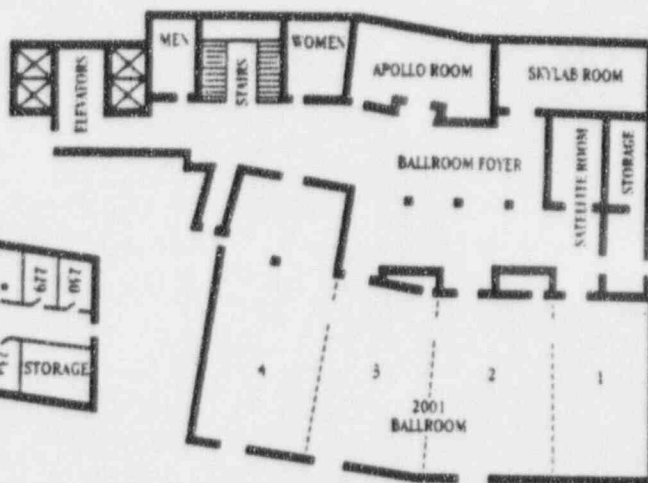
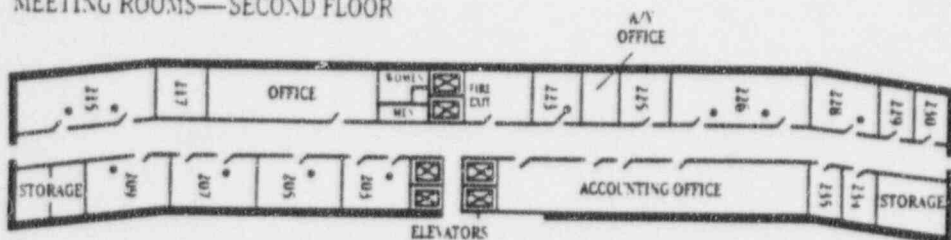
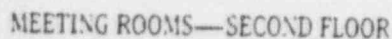
Sincerely,

Robert M. Gallo, Chief
Special Inspection Branch
Division of Inspection and Support Programs
Office of Nuclear Reactor Regulation

Docket: 99901308

**U.S. NUCLEAR REGULATORY COMMISSION
COMMERCIAL GRADE PROCUREMENT
AND DEDICATION WORKSHOP**

MEETING FACILITIES—WEST TOWER GROUND FLOOR



SKYLINE BALLROOMS 12TH FLOOR WEST TOWER

HYATT REGENCY HOTEL WEST TOWER MEETING ROOMS

NRC COMMERCIAL GRADE PROCUREMENT AND DEDICATION WORKSHOP

The Hyatt Regency Hotel
Dallas/Fort Worth Airport

April 21 and 22, 1993

WORKSHOP PROGRAM



Sponsored by
Office of Nuclear Reactor Regulation
U. S. Nuclear Regulatory Commission

UNITED STATES NUCLEAR REGULATORY COMMISSION
COMMERCIAL GRADE PROCUREMENT
AND
DEDICATION WORKSHOP
APRIL 21-22, 1993

THE HYATT REGENCY HOTEL
DALLAS/FORT WORTH AIRPORT
DALLAS, TEXAS 75261
(214) 453-1234

WORKSHOP PROGRAM

TUESDAY, APRIL 20, 1993

7:00 - 9:00 p.m. PRE-REGISTRATION

DAY ONE

WEDNESDAY, APRIL 21, 1993

7:00 - 8:00 a.m. REGISTRATION (2001 BALLROOM-WEST TOWER)

I PLENARY SESSION (SKYLINE BALLROOM B - 12TH FLOOR, WEST TOWER)

8:00 a.m. INTRODUCTORY REMARKS/GENERAL OVERVIEW-COMMERCIAL GRADE PROCUREMENT AND DEDICATION Ernie Rossi, NRR

AGENDA Leif Norrholm, NRR

DEDICATION ISSUES Uldis Potapovs, NRR

INSPECTION PROCESS Roy Zimmerman, NRR

8:45 a.m. NUMARC PERSPECTIVE Alex Marion
Biff Badley

9:45 a.m. BREAK

WORKSHOP PROGRAM

DAY TWO

THURSDAY, APRIL 22, 1993

SKYLINE BALLROOM B

I FEEDBACK SESSION

8:00 a.m. SUMMARY OF BREAK-OUT SESSIONS

II QUESTION AND ANSWER SESSION

9:00 a.m. NRC REPRESENTATIVES TO PROVIDE RESPONSES
TO WORKSHOP ATTENDEES' QUESTIONS.

10:45 a.m. **BREAK**

III SUMMARY/CLOSING REMARKS

11:00 a.m. NUMARC

Alex Marion

11:30 a.m. NRC

Ernie Rossi, NRR

END OF WORKSHOP