

MEMORANDUM TO: Patrick W. Baranowsky, Chief
Reliability and Risk Assessment Branch
Safety Programs Division
Office for Analysis and Evaluation
of Operational Data

June 27, 1997

FROM: Bennett M. Brady
Reactor Risk Assessment Section
Reliability and Risk Assessment Branch
Safety Programs Division
Office for Analysis and Evaluation
of Operational Data

SUBJECT: SUMMARY OF INSTITUTE OF NUCLEAR POWER OPERATIONS
(INPO)'s PRESENTATION ON THE EQUIPMENT PERFORMANCE AND
INFORMATION (EPIX) SYSTEM INTERIM SOFTWARE

On June 11, 1997, Tom McHenry, Manager, Equipment Performance, INPO, gave a presentation to NRC staff on EPIX, INPO's new component information system that replaced NPRDS beginning January 1, 1997. Attached are summary information on EPIX, and a list of meeting attendees.

Mr. McHenry gave a brief overview of the system. EPIX will consist of four modules: Maintenance Rule and Reliability Information, Focused Information (special studies), Info-Link (person-to-person internet communication), and the NPRDS archive. Since INPO's last presentation to NRC on EPIX, INPO has added additional data to the Maintenance Rule and Reliability Information module to make this a fully functional maintenance rule tool.

The main part of the presentation was a demonstration of the interim stand-alone software that utilities will use to input maintenance rule and reliability information. This interim software is now being distributed to the utilities for inputting 1997 information. In October, INPO will provide software to allow utilities to output reports. In April 1998, INPO plans to release the interactive version of EPIX.

Attachment: As stated

Distribution:

Meeting Participants	CERossi	RJcnes
Reliability Reporting Rule Group	DHickman	MCunningham
RRAB RF	JRosenthal	
SPD RF	DRoss	
AEOD RF	EJordan	
Central Files	AThadani	
PDR	GHolahan	

DF034

RD-25 INPO

X C&R-25 Data Process.

DOCUMENT NAME: H:\BMB\SUM_6_11.MEM

9707020256 970627
PDR ORG NEXD
PDR

To receive a copy of this document, indicate in the box "C" copy w/o attach/encl "E" copy w/attach/encl "N" no copy

OFFICE	RRAS/RRAB	C	RRAS/RRAB	
NAME	BBrady	///	SMays	
DATE	6/1/97		1/97	

97-127
NRC FILE CENTER COPY

June 11, 1997 INPO Presentation on Interim Software
for EPIX

NAME	ORGANIZATION
Thomas McHenry	INPO
Altheia Wyche	Search Licensing/Bechtel
Steve Mixon	NUS Information Services
Ernest Lofgren	SAIC
Bill Galyean	INEEL
David Goldin	SC&A, Inc.
A. Bruce Poole	ORNL
Dennis Allison	NRC/AEOD
Tom Bergman	NRC/NRR
Bennett Brady	NRC/AEOD
Peggy Cross-Prather	NRC/AEOD
Les Cupidon	NRC/AEOD
Dale Rasmuson	NRC/AEOD
John Flack	NRC/NRR
James R. Houghton	NRC/AEOD
Edna Know-Davin	NRC/ADM
Don Marksberry	NRC/AEOD
Michael Marshall	NRC/RES
Wallace Norris	NRC/RES
David Skeen	NRC/NRR
Frank Talbot	NRC/NRR
Harold Vandermolen	NRC/RES
Steven Vias	NRC/RII

Equipment Performance and Information Exchange (EPIX)

Tom McHenry

Institute of Nuclear Power Operations

June 11, 1997

Slide 1

EPIX Background

- NPRDS not aligned with industry needs
 - difficult to use
 - resource intensive
 - limited flexibility

Slide 2

EPIX Development

Fresh Look at Industry Needs

- user needs
- management perspective
- industry support



Slide 3

EPIX Purpose

EPIX is a solution-focused database that provides information on components important to nuclear plant safety and reliability.

Slide 4

EPIX Applications

EPIX is a tool that supports

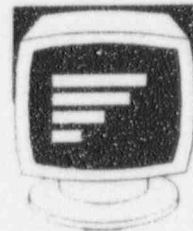
- automated system/component health reports
- high quality input for root cause analysis
- exchange of operating experience
- benchmarking performance
- Maintenance Rule activities
- risk-informed decision making

Slide 5

EPIX Design

- **Application and Software Design**

- simple -- scope and reporting
- low cost -- minimum resources
- compatible -- MA Rule / SSPI
- flexible -- future needs
- easy to use -- minimum training
- PC-based -- common software
- menu-driven -- input and output
- accessible -- INPO Intranet



Slide 6

EPIX Structure

- EPIX Modules
 - Maintenance Rule and Reliability Information
 - Focused Information
 - Info-Link
 - NPRDS Archive

Slide 7

EPIX Modules

- Focused Information
 - driven by industry needs
 - flexibility add or delete data collected
- Info-Link
 - coupled to NUCLEAR NETWORK
 - direct (person-to-person) Intranet communications and information sharing between individuals in component focus groups

Slide 8

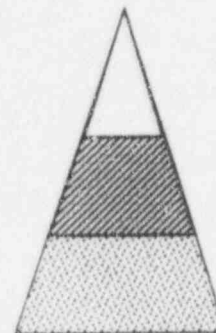
EPIX Modules

- **NPRDS Archive**
 - allows retrieval and analysis of archived NPRDS failure information and component data
- **Maintenance Rule and Reliability Information (MRRI)**
 - component performance information
 - supports MA Rule activities
 - replaces NPRDS

Slide 9

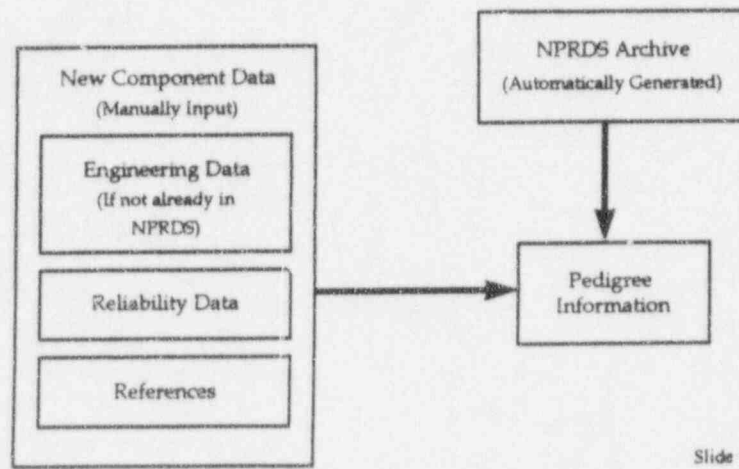
EPIX / MRRI Scope

- **Four Scope Levels**
 - highest level -- SSPI scope
 - middle level -- risk significant MA Rule systems
 - lowest level -- MA Rule scope (generation impact)



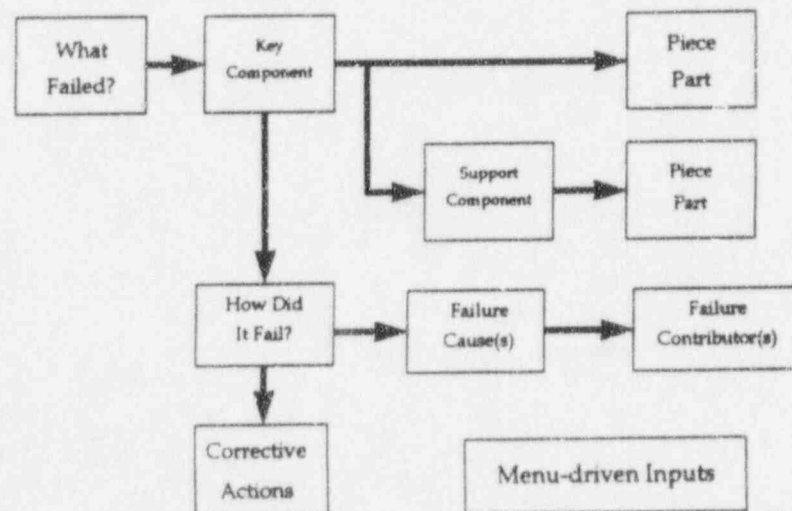
Slide 10

EPIX/MRRI Component Data



Slide 11

EPIX/MRRI Failure Reporting



Slide 12

EPIX Implementation

EPIX Development Schedule

- interim EPIX -- June 1997
- first release -- October 1997
- second release -- January 1998
- interactive EPIX -- April 1998

Slide 13

Interim EPIX Software

- stand-alone software
- LAN/WAN compatible
- collects component failure information for interactive EPIX
- stop NPRDS reporting

Slide 14