



UNITED STATES
NUCLEAR REGULATORY COMMISSION

WASHINGTON, D.C. 20555-0001

October 17, 1996

MEMORANDUM TO: Richard W. Cooper, Director
Division of Reactor Projects
Region I

FROM: Ellis W. Merschoff, Team Leader *[Signature]*
Maine Yankee Independent Safety Assessment Team

SUBJECT: INSPECTION PROGRAM CREDIT FOR THE INDEPENDENT SAFETY ASSESSMET
AT MAINE YANKEE

The Maine Yankee Independent Safety Assessment (ISA) Team has compared the assessment done at Maine Yankee to the inspection program modules to establish appropriate credit. The ISA recommends that Region I take full or partial credit for the modules listed below. The ISA recognizes that additional follow-up inspection may be needed in some areas based on performance observations documented in the ISA report.

- 35701, Quality Assurance Program Annual Review - 100% Close
- 35702, Inspection of Quality Verification Function - 100% Close
- 36800, Organization - 100% Close
- 37700, Design, Design Changes, and Modifications - 100% Close
- 37701, Facility Modifications - 100% Close
- 37828, Installation and Testing of Modifications - 75% Credit
- 38701, Procurement Program - 25% Credit
- 38702, Receipt, Storage, and Handling of Equipment and Materials Program - 25% Credit
- 39702, Document Control Program - 100% Close
- 40500, Evaluation of Licensee Self-Assessment Capability - 100% Close
- 40704, Implementation, Audit Program - 100% Close
- 41500, Training and Qualification Effectiveness - 20% Credit
- 42700, Plant Procedures - 50% Credit
- 61700, Surveillance Procedures and Records - 90% Credit
- 61701, Complex Surveillance - 50% Credit
- 61726, Surveillance Observations - 100% Credit
- 62700, Maintenance Program Implementation - 100% Credit
- 62703, Maintenance Observations - 100% Credit
- 62704, Instrumentation Maintenance - 100% Credit
- 62705, Electrical Maintenance - 100% Credit
- 71500, Balance of Plant Inspection - 25% Credit
- 71707, Plant Operations - 50% Credit
- 71715, Sustained Control Room and Plant Observations - 100% Credit
- 72701, Modification Testing - 100% Credit
- 73756, In-Service Testing of Pumps and Valves - 100% Credit

Richard W. Cooper

2

- 81042, Testing and Maintenance - 100% Credit
- 82205, Shift Staffing and Augmentation - 100% Credit
- 90700, Feedback of Operational Experience Information at Operating Power Reactors - 100% Close
- 92720, Corrective Action - 100% Close
- 93804, Risk-Based Operational Safety and Performance Inspection - 100% Credit

The hours expended in the evaluation are not included as entry of these hours into RITS/MIPS would result in a financial charge to the licensee for this activity. The NRC resource expenditure for this special evaluation was not directly assessed the subject licensee.

If there are any questions regarding this information, please contact me at (404) 331-5179.

cc: E. L. Jordan, AEOD
H. J. Miller, RA/RI

October 17, 1996

MEMORANDUM TO: Richard W. Cooper, Director
Division of Reactor Projects, Region I

FROM: Ellis W. Merschoff, Team Leader /S/
Maine Yankee Independent Safety Assessment Team

SUBJECT: INSPECTION PROGRAM CREDIT FOR THE INDEPENDENT SAFETY ASSESSMET
AT MAINE YANKEE

The Maine Yankee Independent Safety Assessment Team (ISAT) has compared the assessment done at Maine Yankee to the inspection program modules to establish appropriate credit. The ISAT recommends that Region I take full or partial credit for the modules listed below. The ISAT recognizes that additional follow-up inspection may be needed in some areas based on performance observations documented in the ISAT report.

- 35701, Quality Assurance Program Annual Review - 100% Close
- 35702, Inspection of Quality Verification Function - 100% Close
- 36800, Organization - 100% Close
- 37700, Design, Design Changes, and Modifications - 100% Close
- 37701, Facility Modifications - 100% Close
- 37828, Installation and Testing of Modifications - 75% Credit
- 38701, Procurement Program - 25% Credit
- 38702, Receipt, Storage, and Handling of Equipment and Materials Program
- 25% Credit
- 39702, Document Control Program - 100% Close
- 40500, Evaluation of Licensee Self-Assessment Capability - 100% Close
- 40704, Implementation, Audit Program - 100% Close
- 41500, Training and Qualification Effectiveness - 20% Credit
- 42700, Plant Procedures - 50% Credit
- 61700, Surveillance Procedures and Records - 90% Credit
- 61701, Complex Surveillance - 50% Credit
- 61726, Surveillance Observations - 100% Credit
- 62700, Maintenance Program Implementation - 100% Credit
- 62703, Maintenance Observations - 100% Credit
- 62704, Instrumentation Maintenance - 100% Credit
- 62705, Electrical Maintenance - 100% Credit
- 71500, Balance of Plant Inspection - 25% Credit
- 71707, Plant Operations - 50% Credit
- 71715, Sustained Control Room and Plant Observations - 100% Credit
- 72701, Modification Testing - 100% Credit
- 73756, In-Service Testing of Pumps and Valves - 100% Credit

970270173

Richard W. Cooper

2

- 81042, Testing and Maintenance - 100% Credit
- 82205, Shift Staffing and Augmentation - 100% Credit
- 90700, Feedback of Operational Experience Information at Operating Power Reactors - 100% Close
- 92720, Corrective Action - 100% Close
- 93804, Risk-Based Operational Safety and Performance Inspection - 100% Credit

The hours expended in the evaluation are not included as entry of these hours into RITS/MIPS would result in a financial charge to the licensee for this activity. The NRC resource expenditure for this special evaluation was not directly assessed the subject licensee.

If there are any questions regarding this information, please contact me at (404) 331-5179.

cc: E. L. Jordan, AEOD
H. J. Miller, RA/RI

Distribution:

DFRoss
EWMerschhoff
FJCongel
DCS
IRD R/F
File D916

DOCUMENT NAME:k:\D0916\INSPCDTA.ME

To receive a copy of this document, indicate in the box: "C" = Copy without enclosures "E" = Copy with enclosures "N" = No copy

OFFICE	AEOD, ISAT								
NAME	EWMerschhoff:obw								
DATE	10/17/96	10/ /96	10/ /96	10/ /96	10/ /96	10/ /96	10/ /96	10/ /96	10/ /96

OFFICIAL RECORD COPY

D0916



UNITED STATES
NUCLEAR REGULATORY COMMISSION

WASHINGTON, D.C. 20555-0001

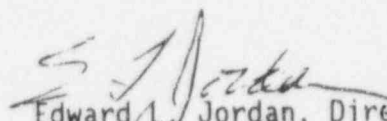
September 11, 1996

Mr. Charles D. Frizzle
President
Maine Yankee Atomic Power Company
329 Bath Road
Brunswick, Maine 04011

Dear Mr. Frizzle:

As part of the ongoing Independent Safety Assessment of the Maine Yankee Nuclear Station, on August 1, 1996, we provided you with the results of our review of component reliability data for the steam driven auxiliary feedwater pump. In this memorandum which requested a review for factual errors, we noted that we were reviewing the treatment of early run failures. We have determined that certain early run failures would be more appropriately classified as failures to start, which has in turn changed the numerical determination of reliability of the pump. We have enclosed the revised reliability graph for your information. If you have any questions, Mr. Ron Lloyd can be reached at 301-415-5543.

Sincerely,


Edward L. Jordan, Director
Office for Analysis and Evaluation
of Operational Data

Docket No. 50-309

Enclosure: As stated

cc w/enclosures: See page 2

2609170053 30

Mr. Charles D. Frizzle

2

cc/w enclosures:

Chairman Jackson
Commissioner Rogers
Commissioner Dicus
Commissioner Diaz
Commissioner McGaffigan
James M. Taylor, NRC
SECY

Mr. Charles B. Brinkman
Manager - Washington Nuclear
Operations
ABB Combustion Engineering
12300 Twinbrook Parkway, Suite 330
Rockville, MD 20852

Thomas G. Dignan, Jr., Esquire
Ropes & Gray
One International Place
Boston, MA 02110-2624

Mr. Uldis Vanags
State Nuclear Safety Advisor
State Planning Office
State House Station #38
Augusta, ME 04333

Mr. P. L. Anderson, Project Manager
Yankee Atomic Electric Company
580 Main Street
Bolton, MA 01740-1398

Regional Administrator, Region I
U.S. Nuclear Regulatory Commission
475 Allendale Road
King of Prussia, PA 19406

First Selectman of Wiscasset
Municipal Building
U.S. Route 1
Wiscasset, ME 04578

Mr. J. T. Yerokun
Senior Resident Inspector
Maine Yankee Atomic Power Station
U.S. Nuclear Regulatory Commission
P.O. Box E
Wiscasset, ME 04578

Mr. James R. Hebert, Manager
Nuclear Engineering and Licensing
Maine Yankee Atomic Power Company
329 Bath Road
Wiscasset, ME 04578

Mr. Robert W. Blackmore
Plant Manager
Maine Yankee Atomic Power Station
P.O. Box 408
Wiscasset, ME 04578

Mr. G. D. Whittier, Vice President
Licensing and Engineering
Maine Yankee Atomic Power Company
329 Bath Road
Brunswick, ME 04011

Mr. Patrick J. Dostie
State of Maine Nuclear Safety
Inspector
Maine Yankee Atomic Power Station
P.O. Box 408
Wiscasset, ME 04578

Mr. Graham M. Leitch
Vice President, Operations
Maine Yankee Atomic Power Station
P.O. Box 408
Wiscasset, ME 04578

Mary Ann Lynch, Esquire
Maine Yankee Atomic Power Company
329 Bath Road
Brunswick, ME 04578

Mr. Jonathan M. Block
Attorney at Law
P.O. Box 566
Putney, VT 05346-0566

September 11, 1996

Mr. Charles D. Frizzle
President
Maine Yankee Atomic Power Company
329 Bath Road
Brunswick, Maine 04011

Dear Mr. Frizzle:

As part of the ongoing Independent Safety Assessment of the Maine Yankee Nuclear Station, on August 1, 1996, we provided you with the results of our review of component reliability data for the steam driven auxiliary feedwater pump. In this memorandum which requested a review for factual errors, we noted that we were reviewing the treatment of early run failures. We have determined that certain early run failures would be more appropriately classified as failures to start, which has in turn changed the numerical determination of reliability of the pump. We have enclosed the revised reliability graph for your information. If you have any questions, Mr. Ron Lloyd can be reached at 301-415-5543.

Sincerely,

Edward L. Jordan

Edward L. Jordan, Director
Office for Analysis and

Evaluation

of Operational Data

Docket No. 50-309

Enclosure: As stated

cc w/enclosures: See page 2

Distribution: See page 3

DOCUMENT NAME: K:\D0916\AFW.PUM

To receive a copy of this document, indicate in the box: "C" - Copy without enclosures "E" - Copy with enclosures "N" - No copy

OFFICE	AEOD:ISA	AEOD:ISA	D:AEOD			
NAME	RLloyd:obw	EMerschhoff	ELJordan			
DATE	09/10/96	09/10/96	09/10/96	09/ /96	09/ /96	09/ /96

OFFICIAL RECORD COPY

9609170553 20

Distribution:

J. Milhoan, EDO
W. Russell, NRR
D. Morrison, RES
T. Martin, RI
S. Ebnetter, RII
H. Miller, RIII
L. Callen, RIV
W. Beecher, OPA
D. Rathbun, OCA
K. Cyr, OGC
J. Lieberman, OE
G. Caputo, GI
W. Olmstead, OGC
D. Ross, AEOD
D. Chanagg, RI
V. McCree, EDO
Docket File 50-309
Public
PDI-3 Plant
SVarga, NRR
JZwolinski, NRR
PMcKee, NRR
EPeyton, NRR
Etrottier, NRR
ACRS
JRogge, RI
File Center
AEOD R/F

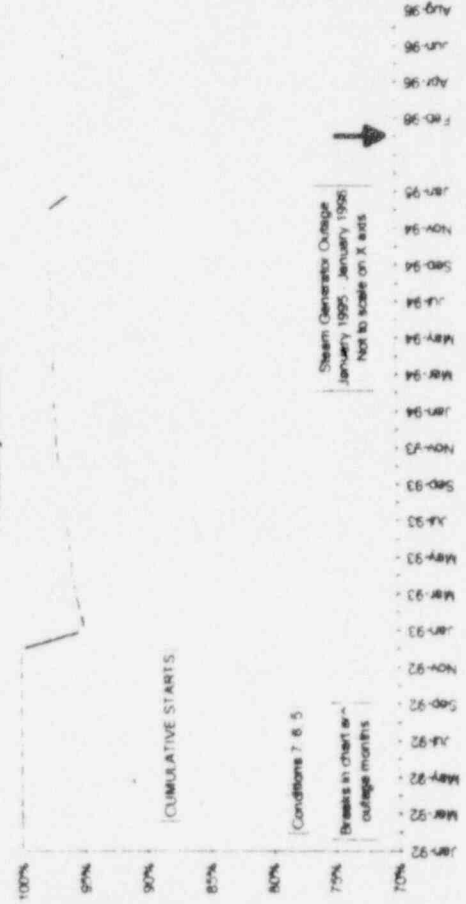
MAINE YANKEE
Auxiliary Feedwater P-25B
Conditional Probability



MAINE YANKEE
Auxiliary Feedwater P-25B
Standby Availability



MAINE YANKEE
Auxiliary Feedwater
Probability of Start



MAINE YANKEE
Auxiliary Feedwater P-25B
Probability of Run

