



UNITED STATES
NUCLEAR REGULATORY COMMISSION
WASHINGTON, D. C. 20555

NRC PUBLIC DOCUMENT ROOM

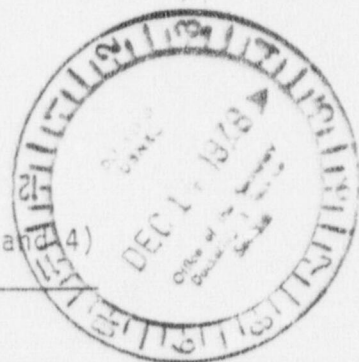
December 14, 1978

Ivan W. Smith, Esq., Chairman
Atomic Safety and Licensing Board
U.S. Nuclear Regulatory Commission
Washington, DC 20555

Mr. Glenn O. Bright
Atomic Safety and Licensing Board
U.S. Nuclear Regulatory Commission
Washington, DC 20555

Dr. J. V. Leeds, Jr.
10807 Atwell Drive
Houston, Texas 77096

In the Matter of
Carolina Power and Light Company
(Shearon Harris Nuclear Power Plant, Units 1, 2, 3 and 4)
Docket Nos. 50-400, 50-401, 50-402, 50-403



Gentlemen:

Enclosed herewith are Figures 1 through 4 to the testimony of Messrs. Miner, Haass and Schwencer and Appendix C to the testimony of Panel III. We regret that they were not sent originally. However, we do not believe they incorporate any new matters which would require any extensions of time.

Sincerely,

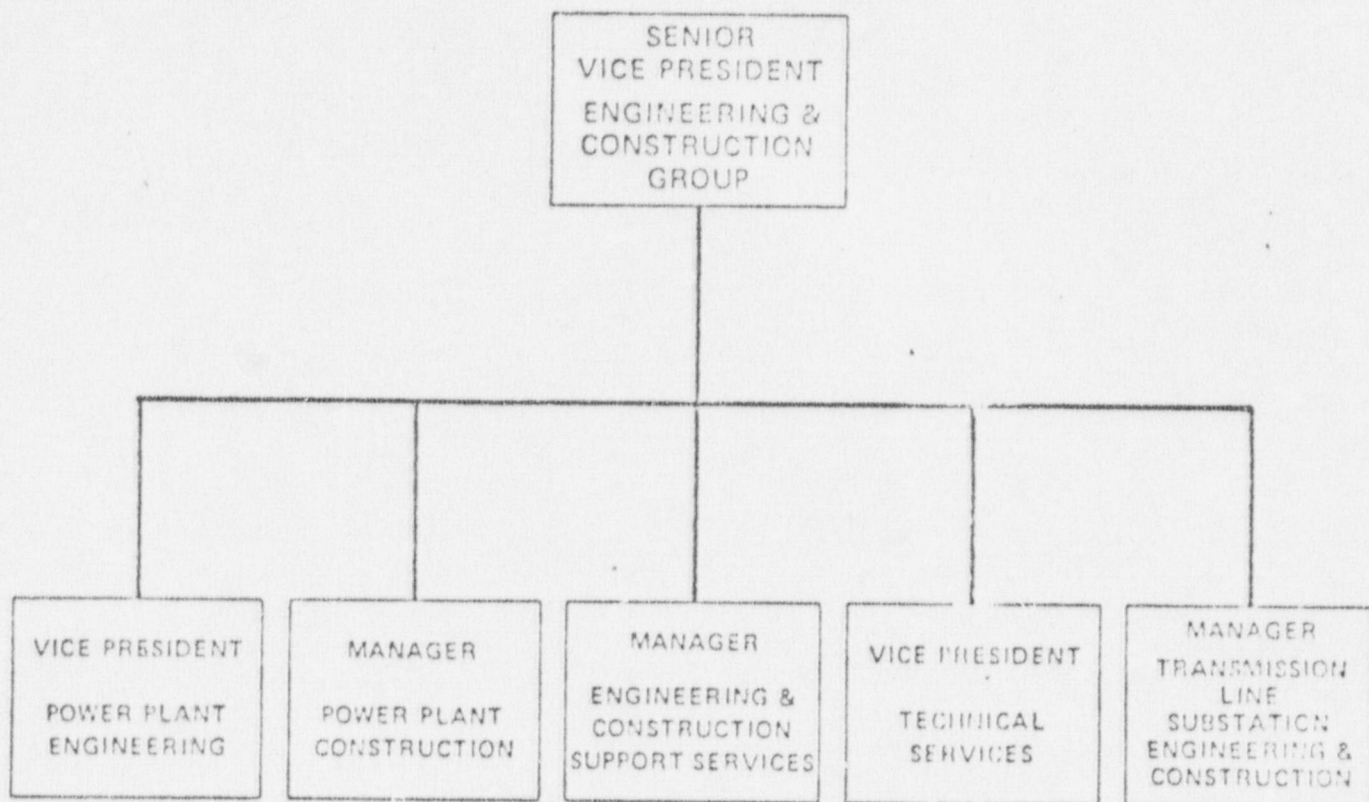
Edwin J. Reiss
Counsel for NRC Staff

Enclosures
As Stated

cc w/encl: Richard E. Jones, Esq.
Thomas Erwin, Esq.
Wake County Public Library
George F. Trowbridge, Esq.
Mr. Jessie C. Brake
Atomic Safety and Licensing Board Panel
Atomic Safety and Licensing Appeal Board
Docketing and Service Section

THIS DOCUMENT CONTAINS
POOR QUALITY PAGES

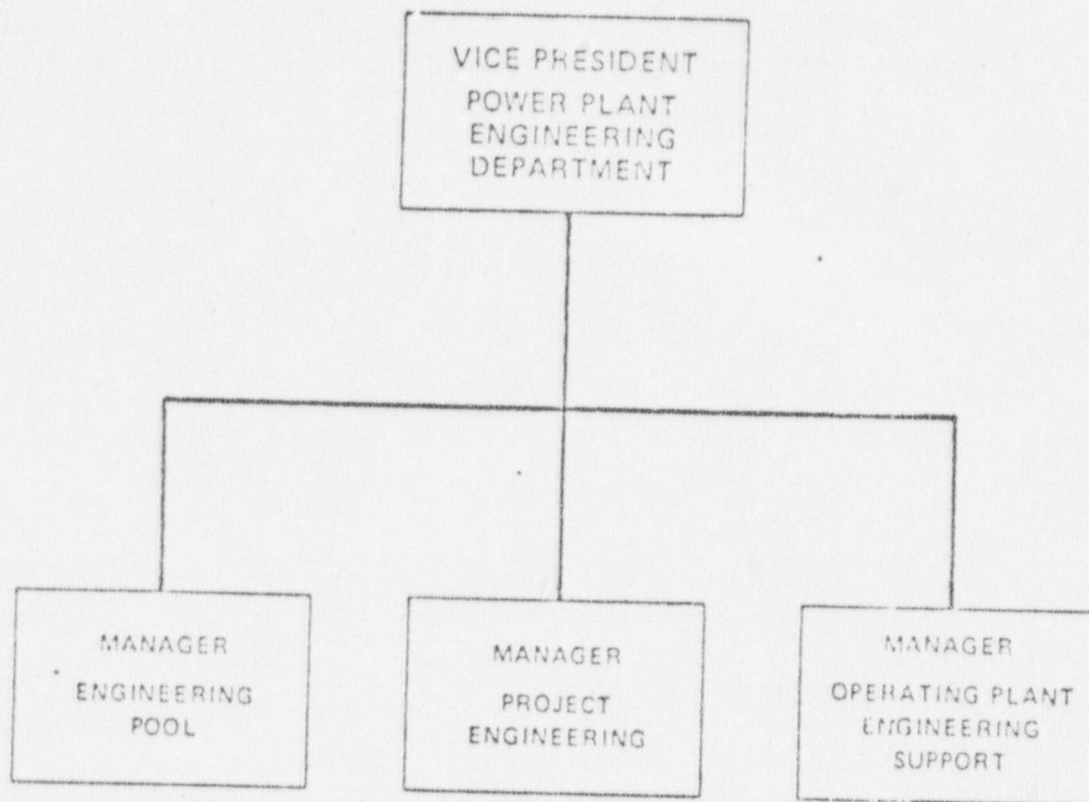
7812280 278



CAROLINA POWER & LIGHT COMPANY
SHEARON NUCLEAR POWER PLANT
UNIT 1, 2, 3 & 4

ENGINEERING CONSTRUCTION GROUP

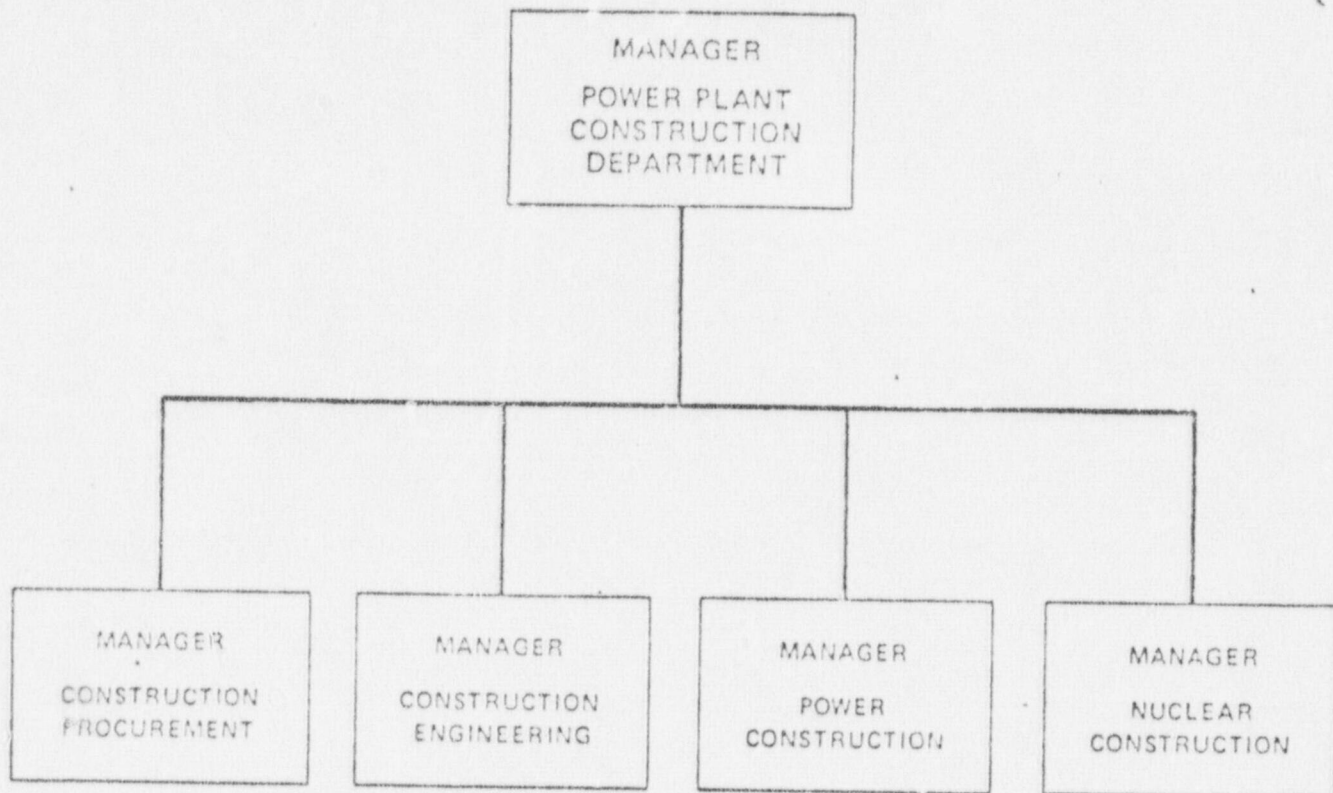
FIG. /



CAROLINA POWER & LIGHT COMPANY
SHEARON HARRIS NUKLEAR POWER PLANT
UNITS 1, 2, 3 & 4

POWER PLANT
ENGINEERING DEPARTMENT

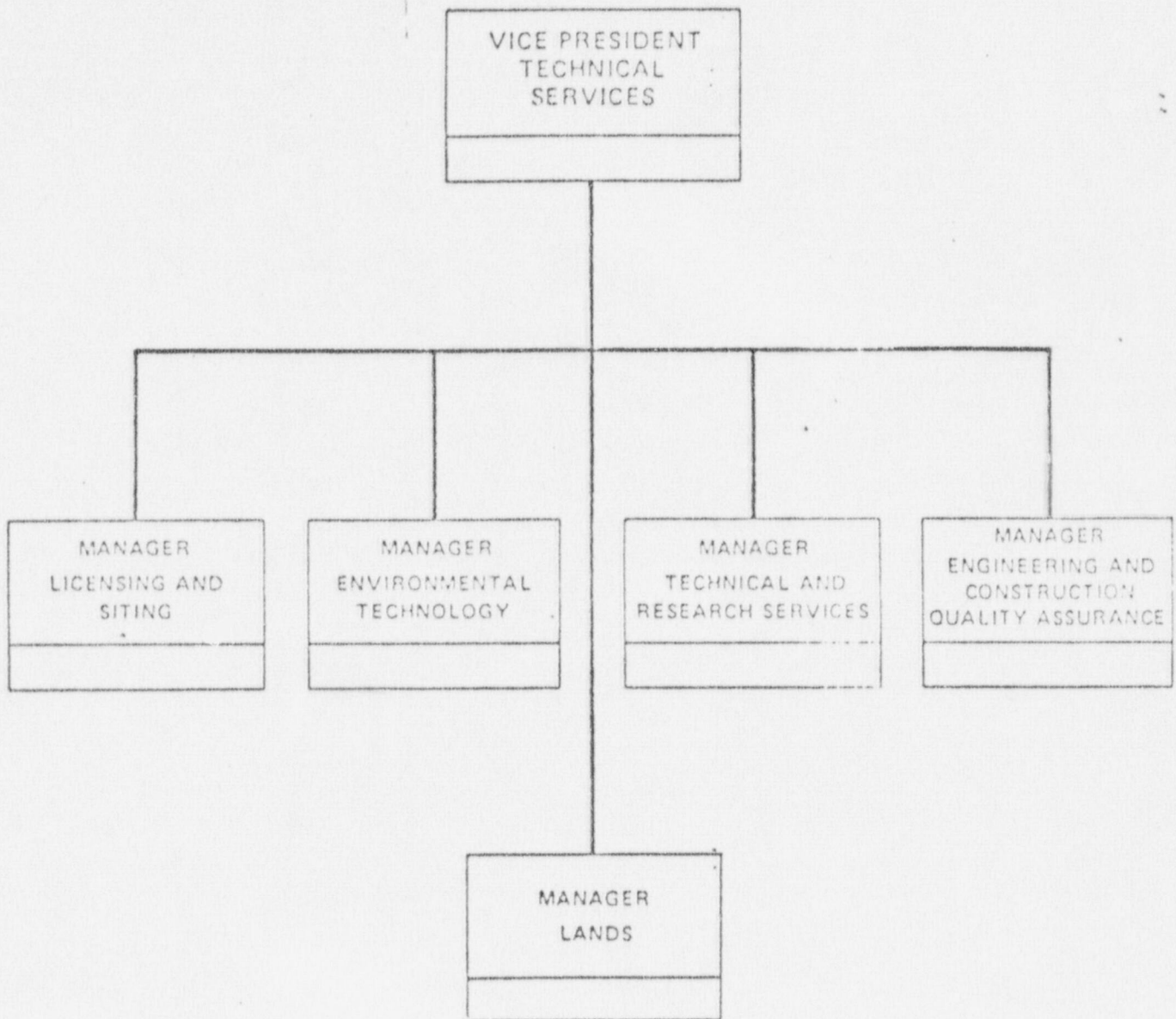
FIG. 2



CAROLINA POWER & LIGHT COMPANY
SHEARON NUCLEAR POWER PLANT
UNITS 1, 2, 3 & 4

POWER PLANT
CONSTRUCTION DEPARTMENT

FIG 3



CAROLINA POWER & LIGHT COMPANY
SHEARON HUBBARD NUCLEAR POWER PLANT
UNITS 1, 2, 3 & 4

TECHNICAL SERVICES DEPARTMENT

FIG. 4

[illegible]

LEGEND

SNO - Senior Director Operator License
 RD - Director Operator License
 * - License Revokable

FACILITY ORGANIZATION

Figure 6.2.2-1

APPENDIX C
H. B. ROBINSON
CONDUCT OF OPERATIONS CHART

SOL - Senior Reactor Operator License
OL - Reactor Operator License

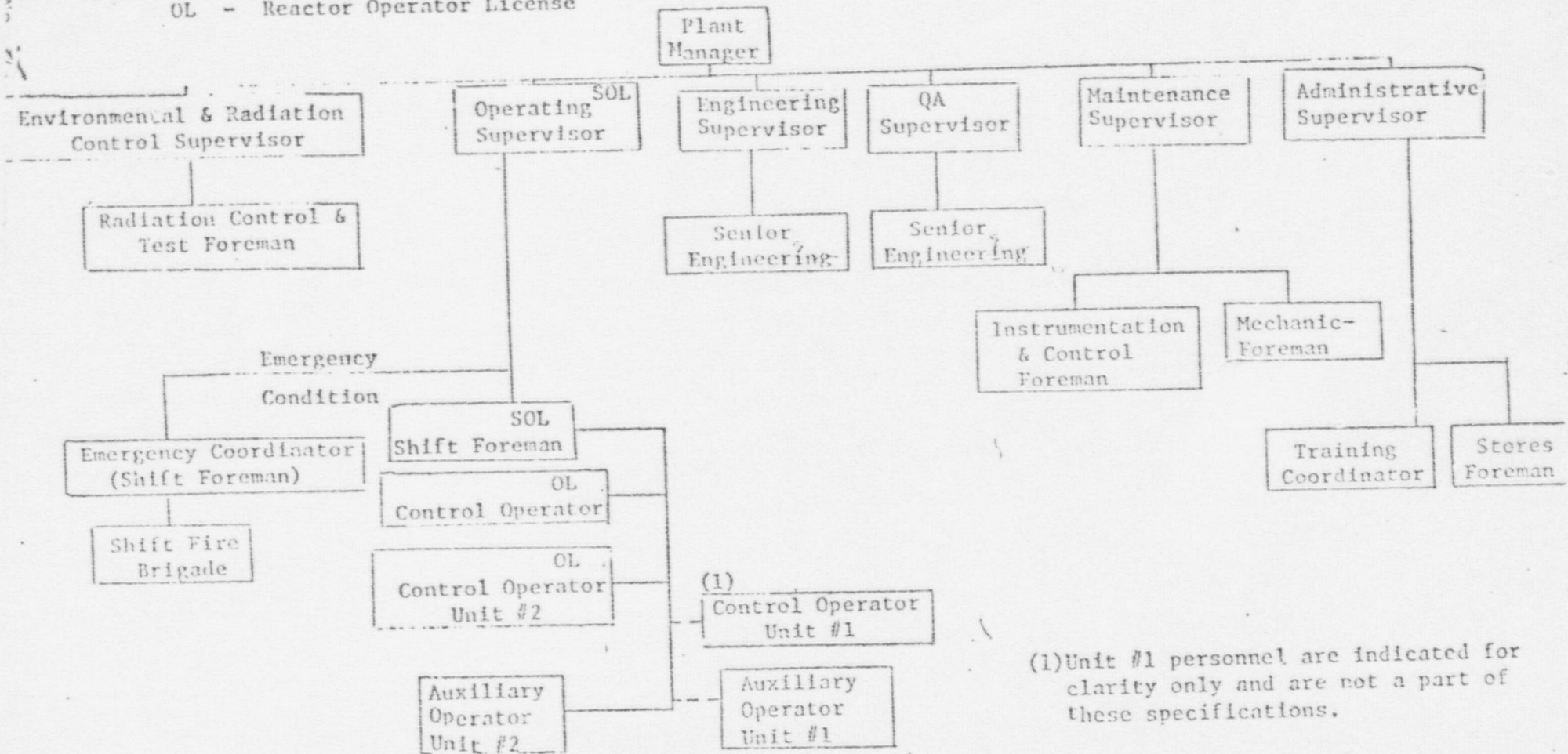
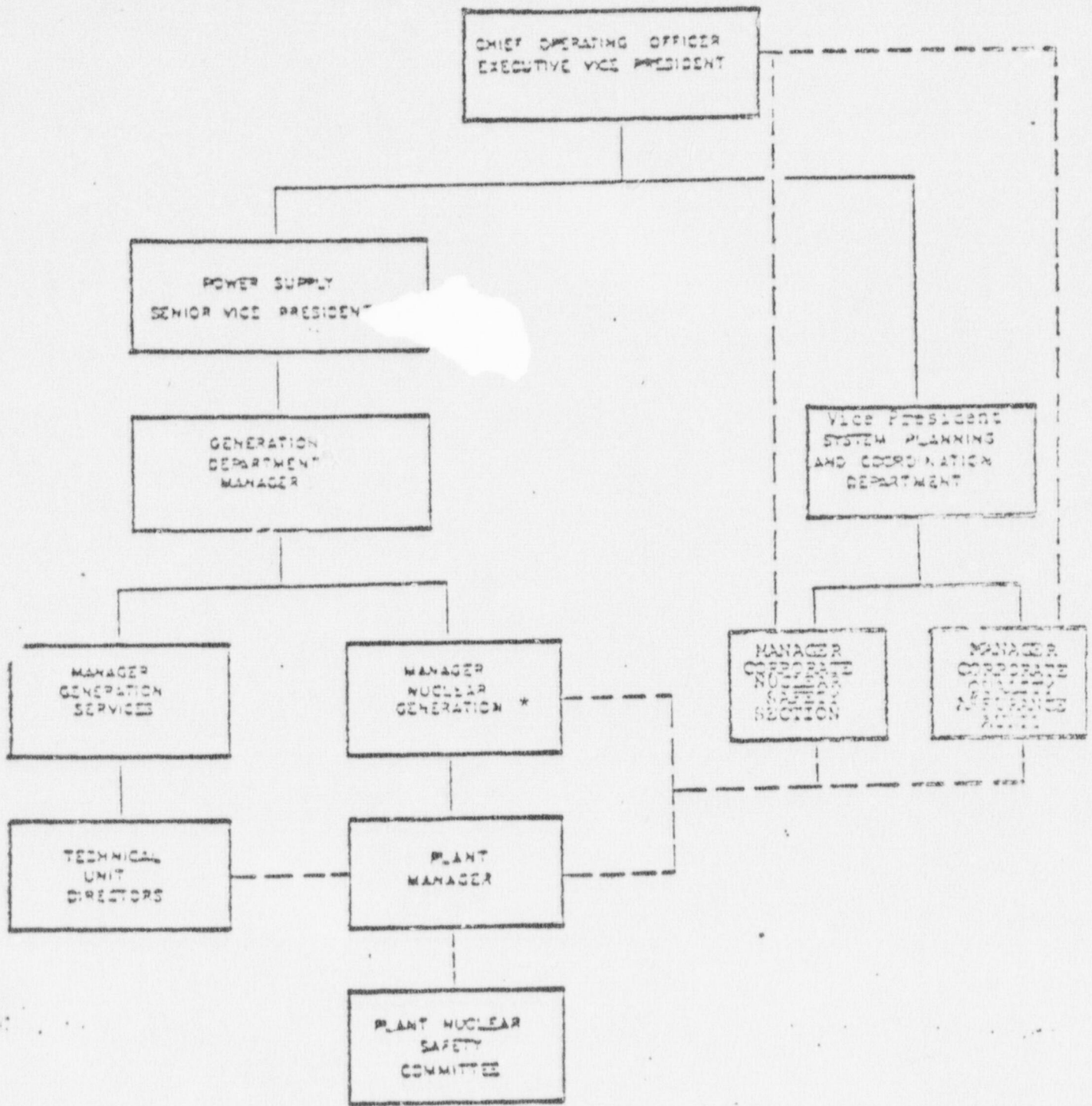


Figure 6.2-2

APPENDIX C
CP & L ORGANIZATION



*Responsible for performance and monitoring of Fire Protection Program.

MANAGEMENT ORGANIZATION CHART

FIGURE 6.2.1-1