

WOLF CREEK UNIT 1

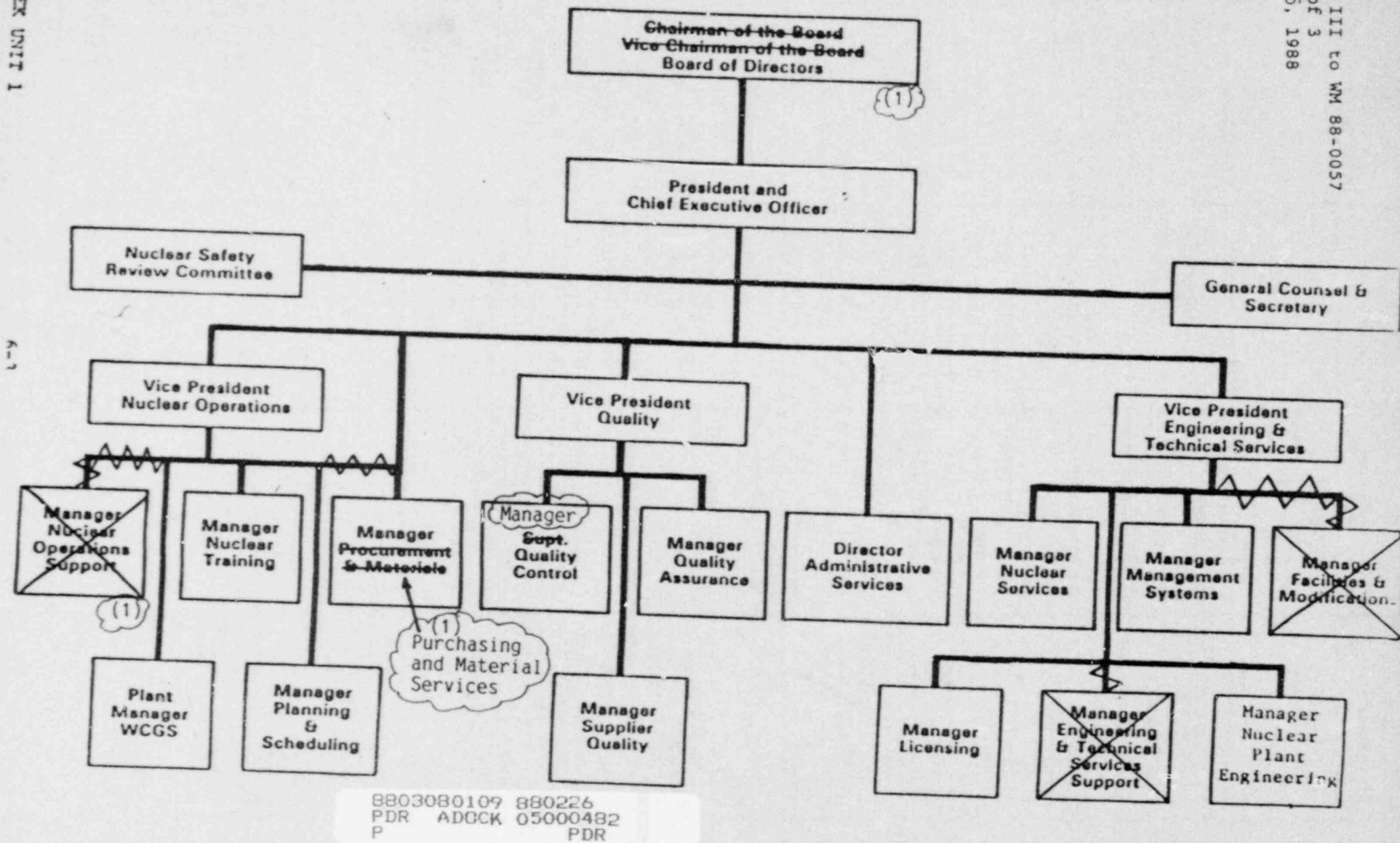


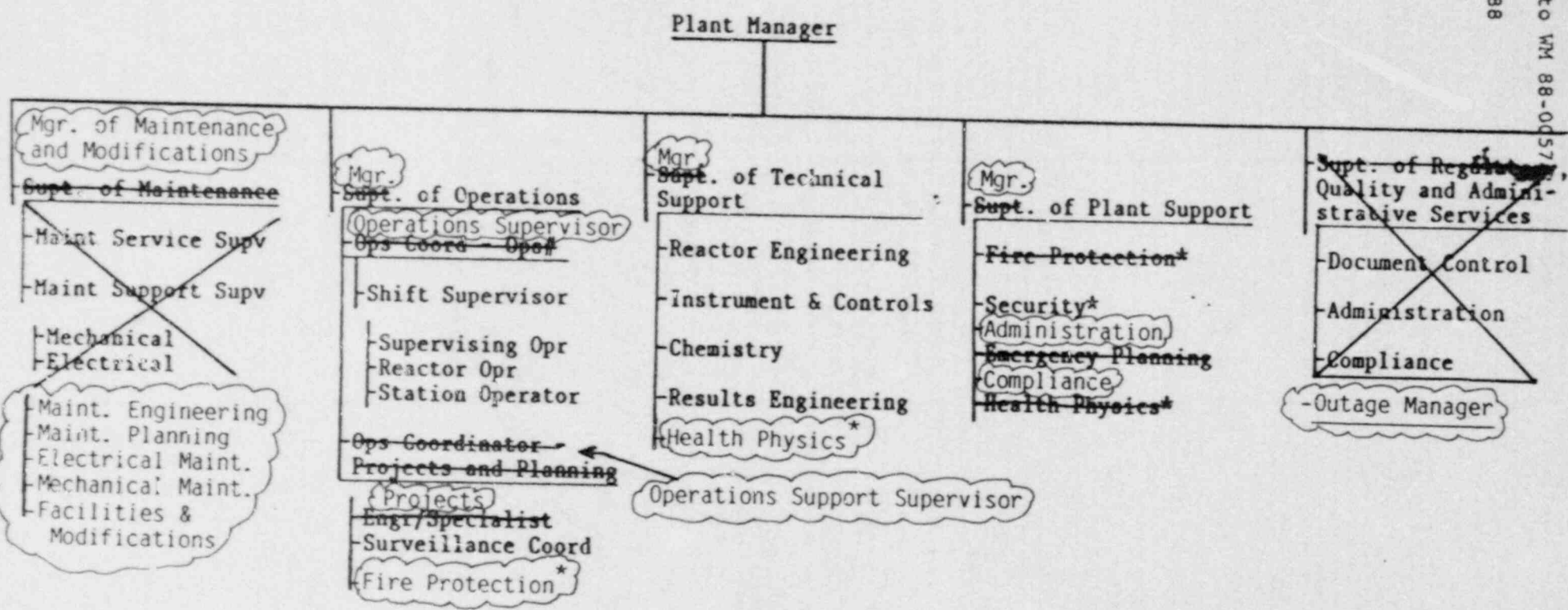
Figure 6.2-1 Operating Corporation Organization

(1) These changes previously submitted per ET 87-0292

WOLF CREEK - UNIT 1

6-4

Amendment No. 2, 13



\*For technical matters of an immediate nature the respective individual reports directly to the Plant Manager.

#This position requires an SRO License.

FIGURE 6.2-2 UNIT ORGNIZATION

February 26, 1988

ADMINISTRATIVE CONTROLS6.4 TRAINING

6.4.1 A retraining and replacement training program for the unit staff shall be maintained under the direction of the Training Manager and shall meet or exceed the requirements and recommendations of Section 5 of ANSI/ANS 3.1-1978 and Appendix "A" of 10 CFR Part 55 and the supplemental requirements specified in Section A and C of Enclosure 1 of the March 28, 1980 NRC letter to all licensees, and shall include familiarization with relevant industry operational experience identified by the ISEG or another plant group.

6.5 REVIEW AND AUDIT6.5.1 PLANT SAFETY REVIEW COMMITTEE (PSRC)FUNCTION

6.5.1.1 The PSRC shall function to advise the Plant Manager on all matters related to nuclear safety.

COMPOSITION

6.5.1.2 The PSRC shall be composed of the:

Chairman:	Plant Manager
Member:	Manager Superintendent of Operations
Member:	Manager Superintendent of Technical Support
Member:	Manager Superintendent of Maintenance and Modifications
Member:	Instrument and Control Supervisor
Member:	Reactor Engineering Supervisor
Member:	Health Physicist
Member:	Chemist
Member:	Results Engineering Supervisor
Member:	Manager Superintendent of Plant Support
Member:	Superintendent of Regulatory, Quality and Administrative Services

ALTERNATES

6.5.1.3 All alternate members shall be appointed in writing by the PSRC Chairman to serve on a temporary basis; however no more than two alternates shall participate as voting members in PSRC activities at any one time.

ATTACHMENT IV



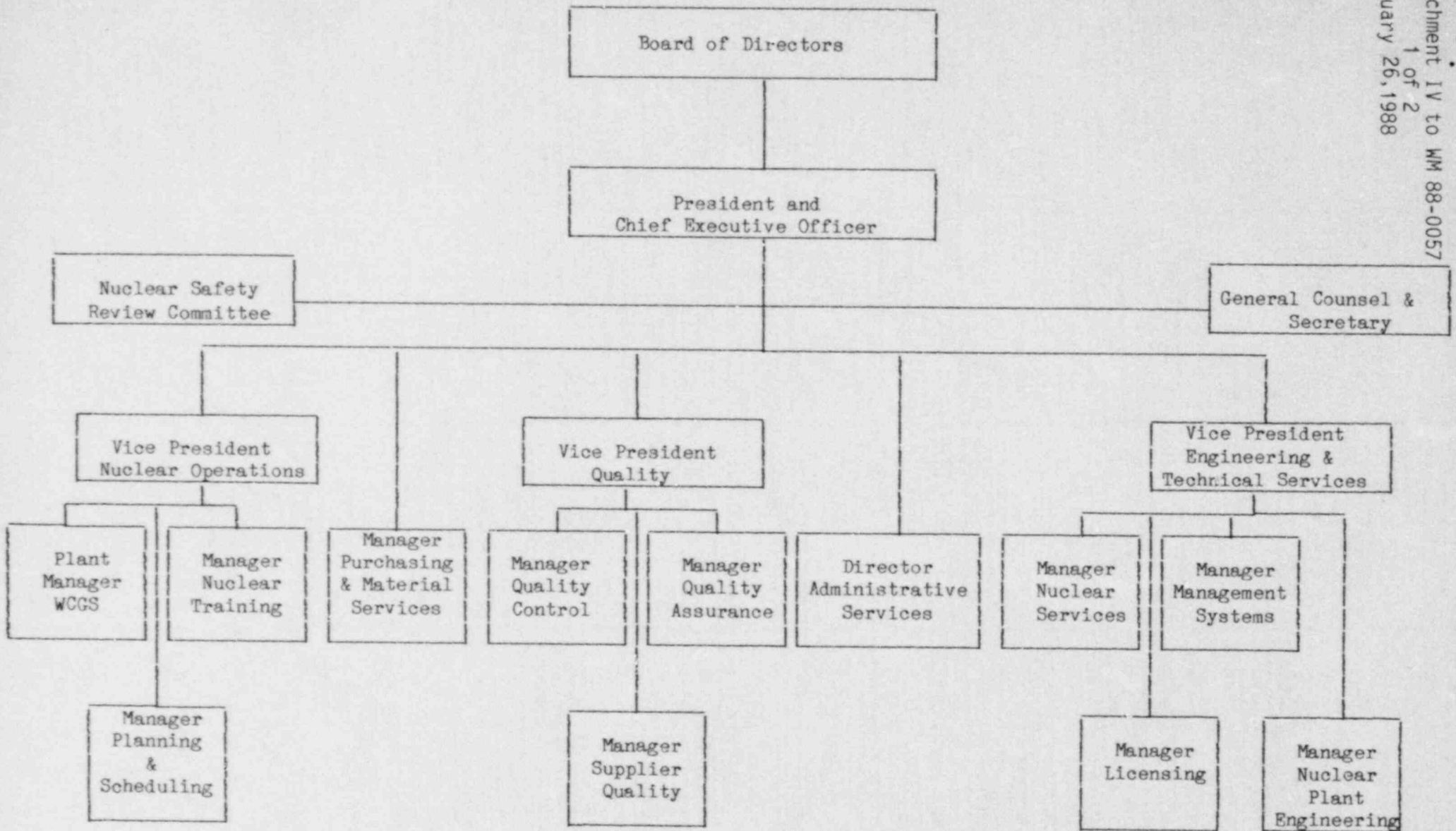
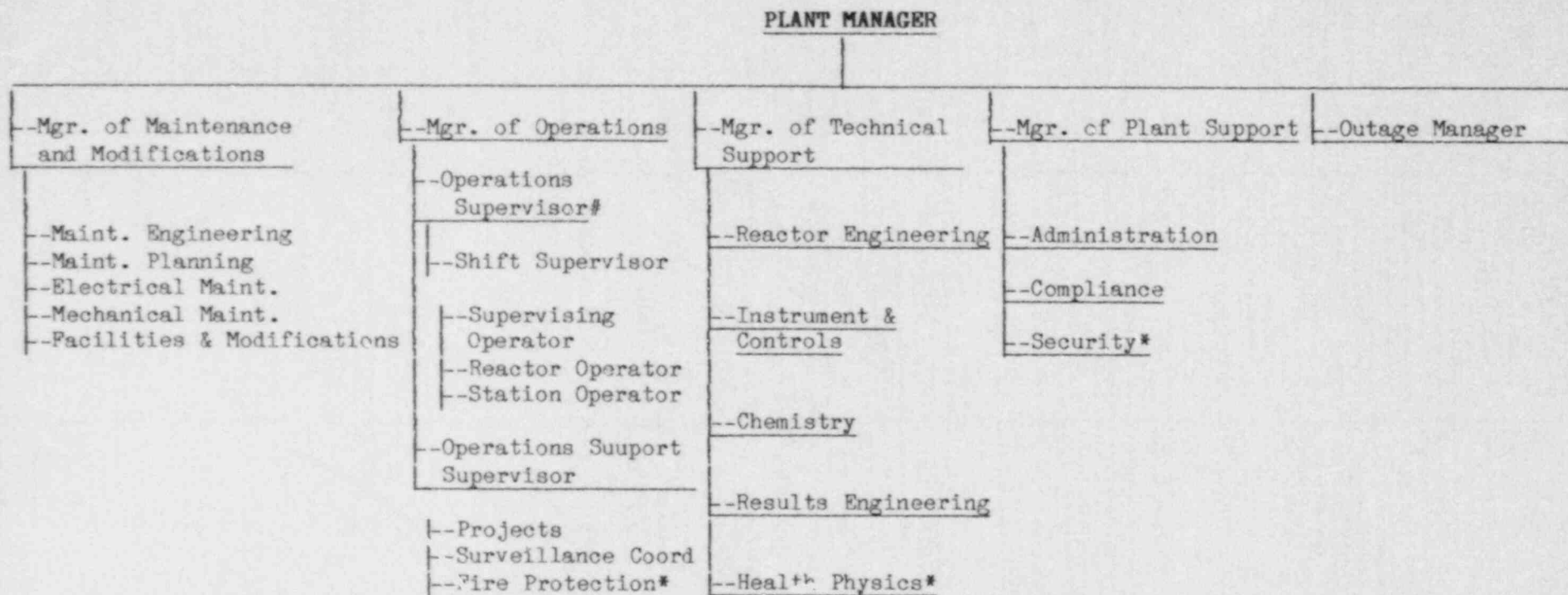


Figure 6.2-1 Operating Corporation Organization



\*For technical matters of an immediate nature, the respective individual reports directly to the Plant Manager.

#This position requires an SRO License

FIGURE 6.2-2 UNIT ORGANIZATION