



DEPARTMENT OF HEALTH & HUMAN SERVICES

National Institute of Mental Health

MAR 5 1986

Saint Elizabeths Hospital
Washington, D.C. 20032

Director
Nuclear Materials Safety Section
U.S. Nuclear Regulatory Commissions
Region I
631 Park Avenue
King of Russia, Pennsylvania 19406

Our License Number: 08-15484-02
Our Reference Number: 030-15113
Control Number: 17296

Dear Sir:

Recently, we acquired some additional space for the laboratory. We are planning to move our Nuclear Medicine facility, which is currently located in three different areas to this location (Attachment #1).

The new location is large enough to consolidate all the activity in one area (Attachment #2). Our health physicist surveyed the area and gave a tentative approval to the plans enclosed.

We are now seeking your advice to ensure that these plans will meet Nuclear Regulatory Commission's guidelines.

Further planning will be done upon hearing from you. Thank you for your cooperation.

Sincerely yours,

S. Kanhouwa M.D.
Suryabala Kanhouwa, M.D.
Director, Blackburn Laboratory

FEE EXEMPT

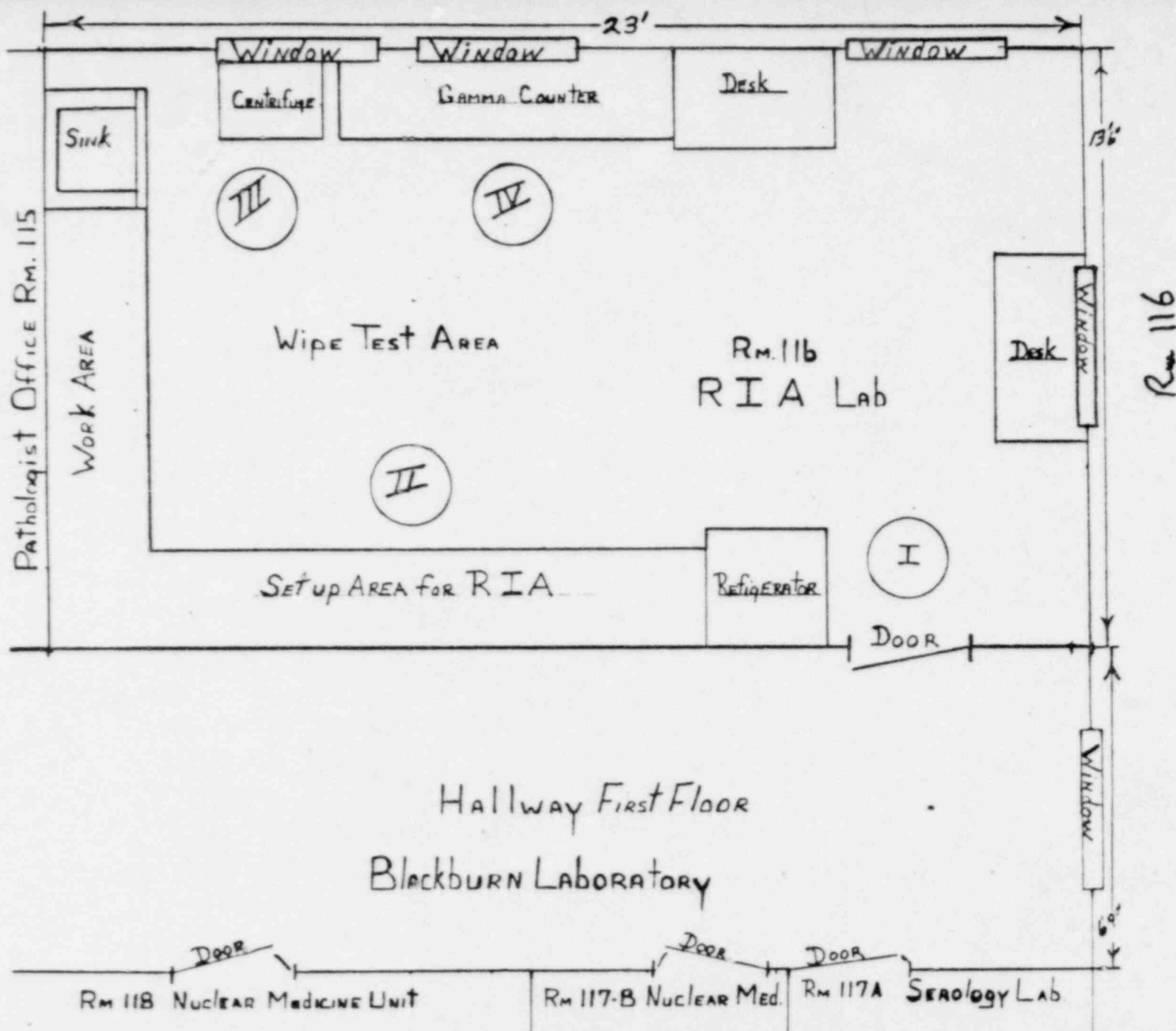
8604040195 860327
REG1 LIC30
08-15484-02 PDR

"OFFICIAL RECORD COPY"

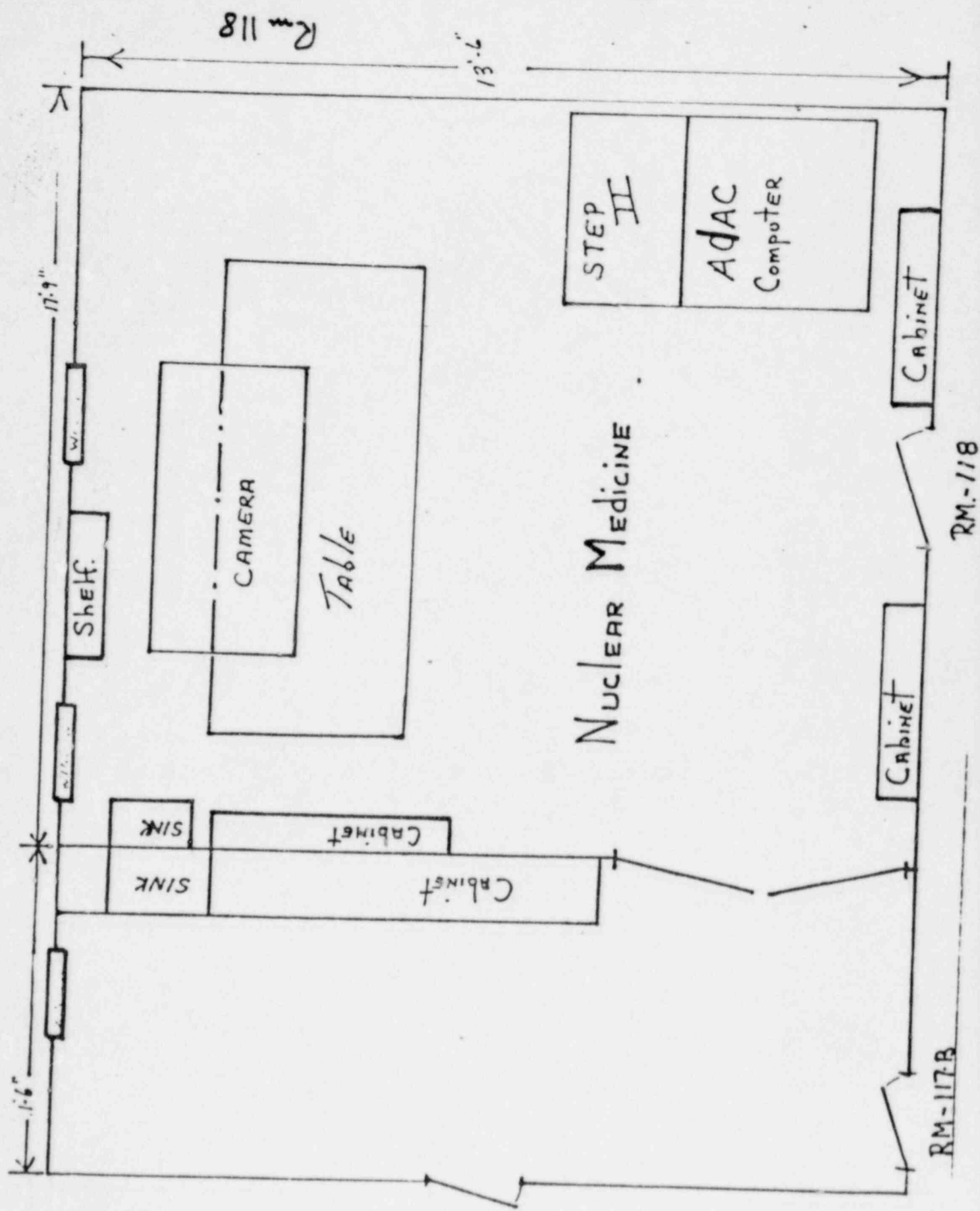
105155

ML10

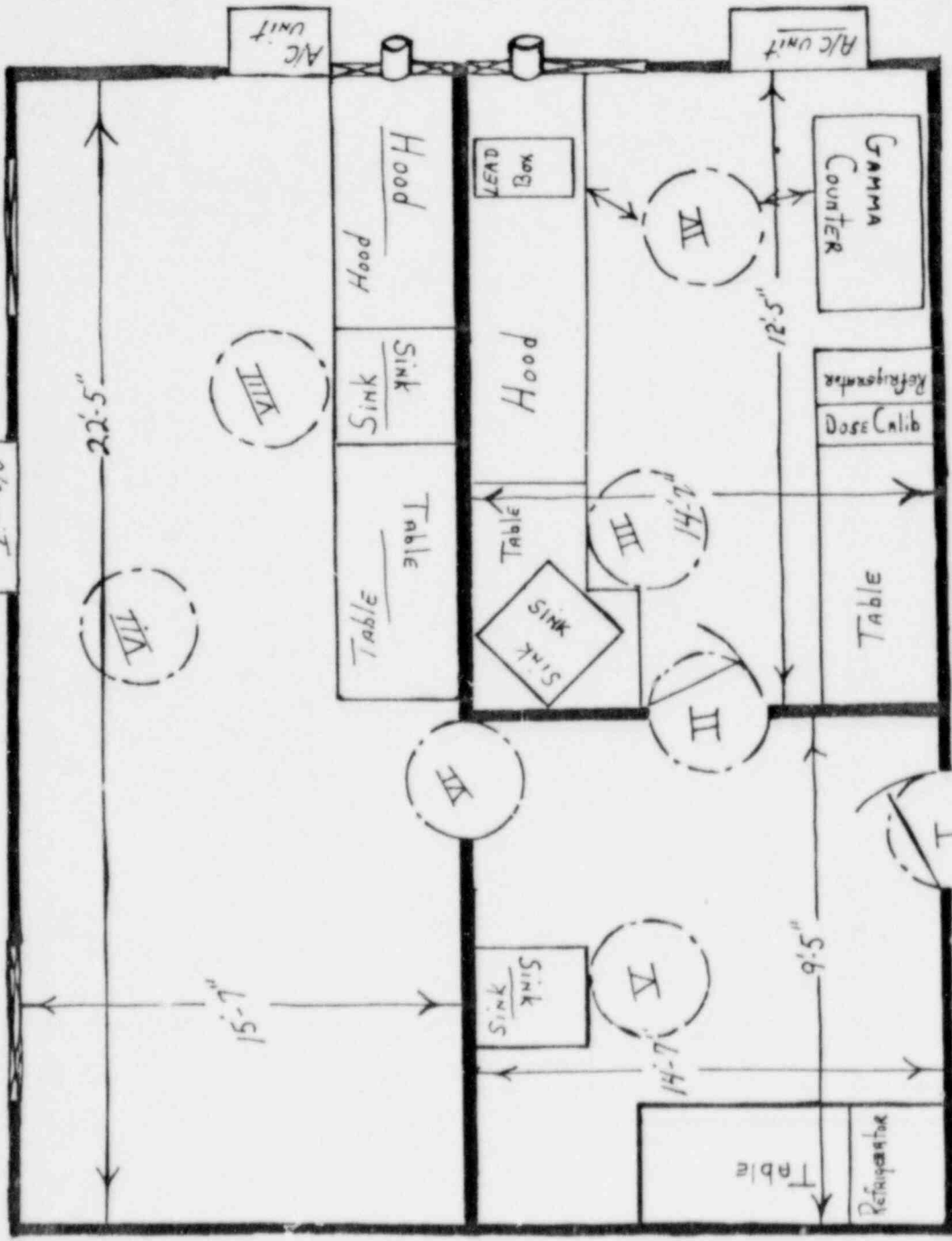
#1



1 #



Nuclear Medicine Area



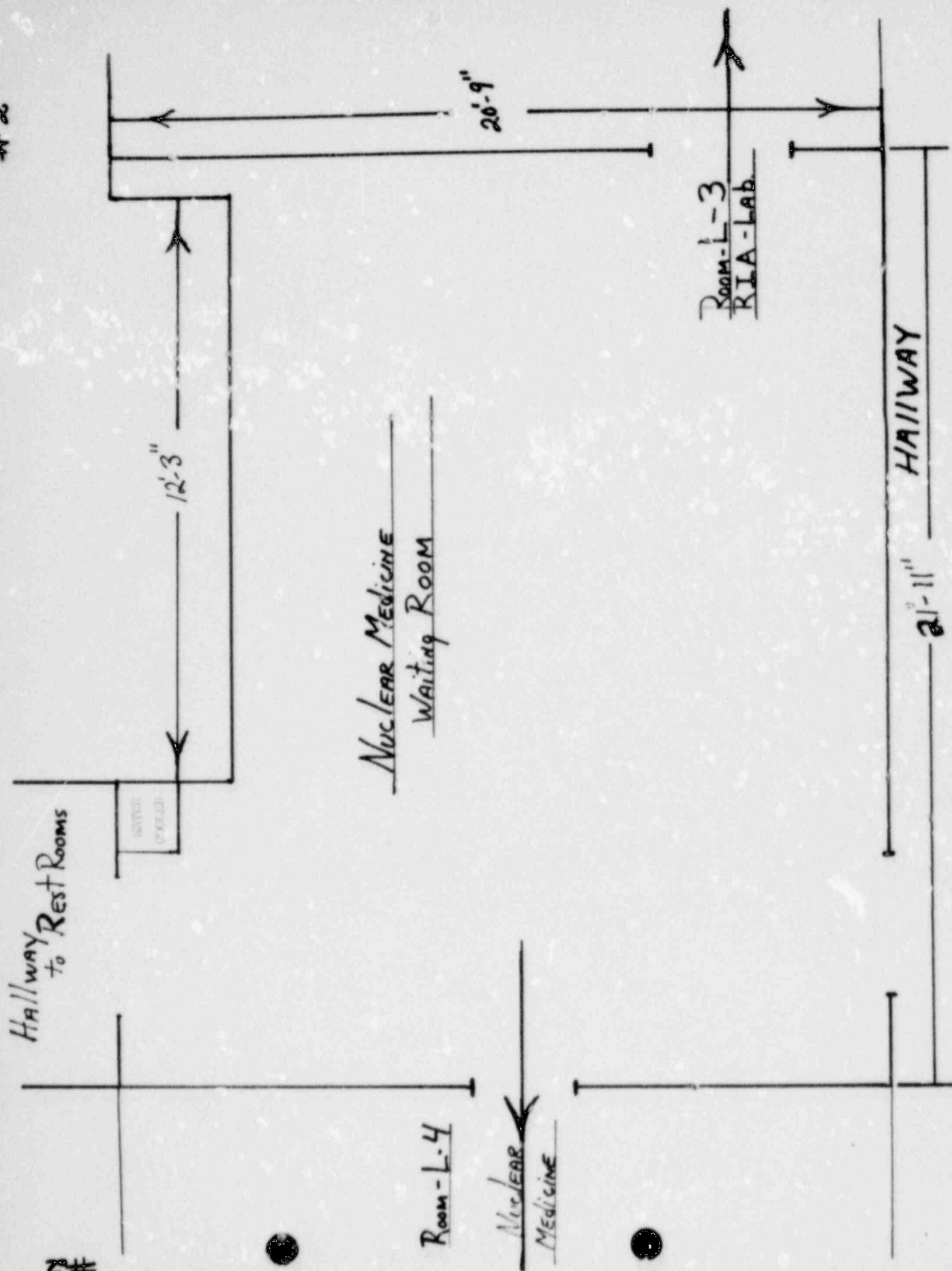
Wipe Test Area

(W.T.A.)

Rm 101

Rm 101

#2

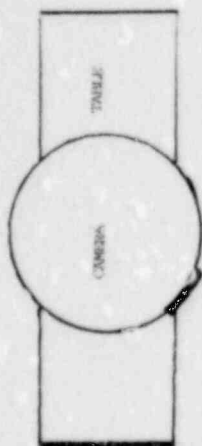


#2

#2

Parking Lot

53'



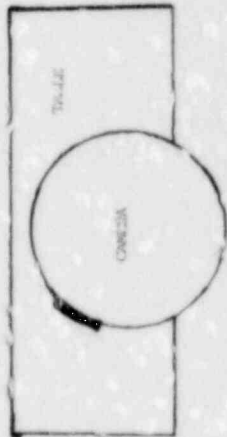
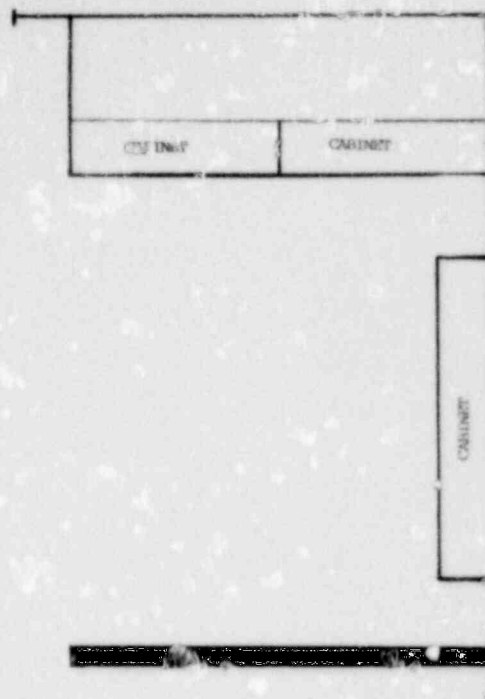
Nuclear Medicine

Room - L-4

19'-6"

Parking Lot

#2



Hallway