

Figure 17-1 (1/86)
DESIGN, PROCUREMENT, MANUFACTURING, CONSTRUCTION AND QUALITY ASSURANCE

8602070093 860131
PDR TOPRP EMVC-E
C PDR

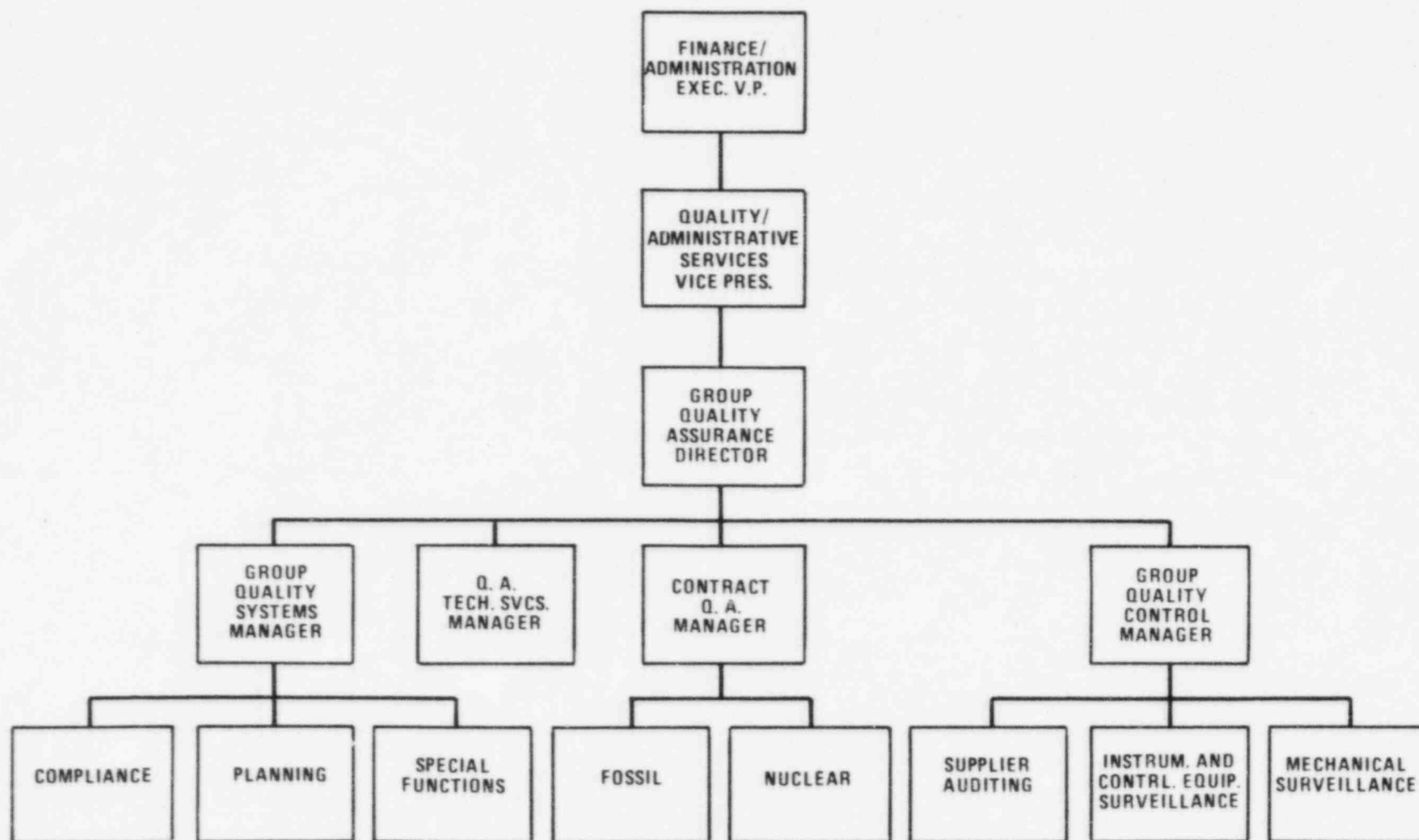


Figure 17-2 (1/86)
GROUP QUALITY ASSURANCE

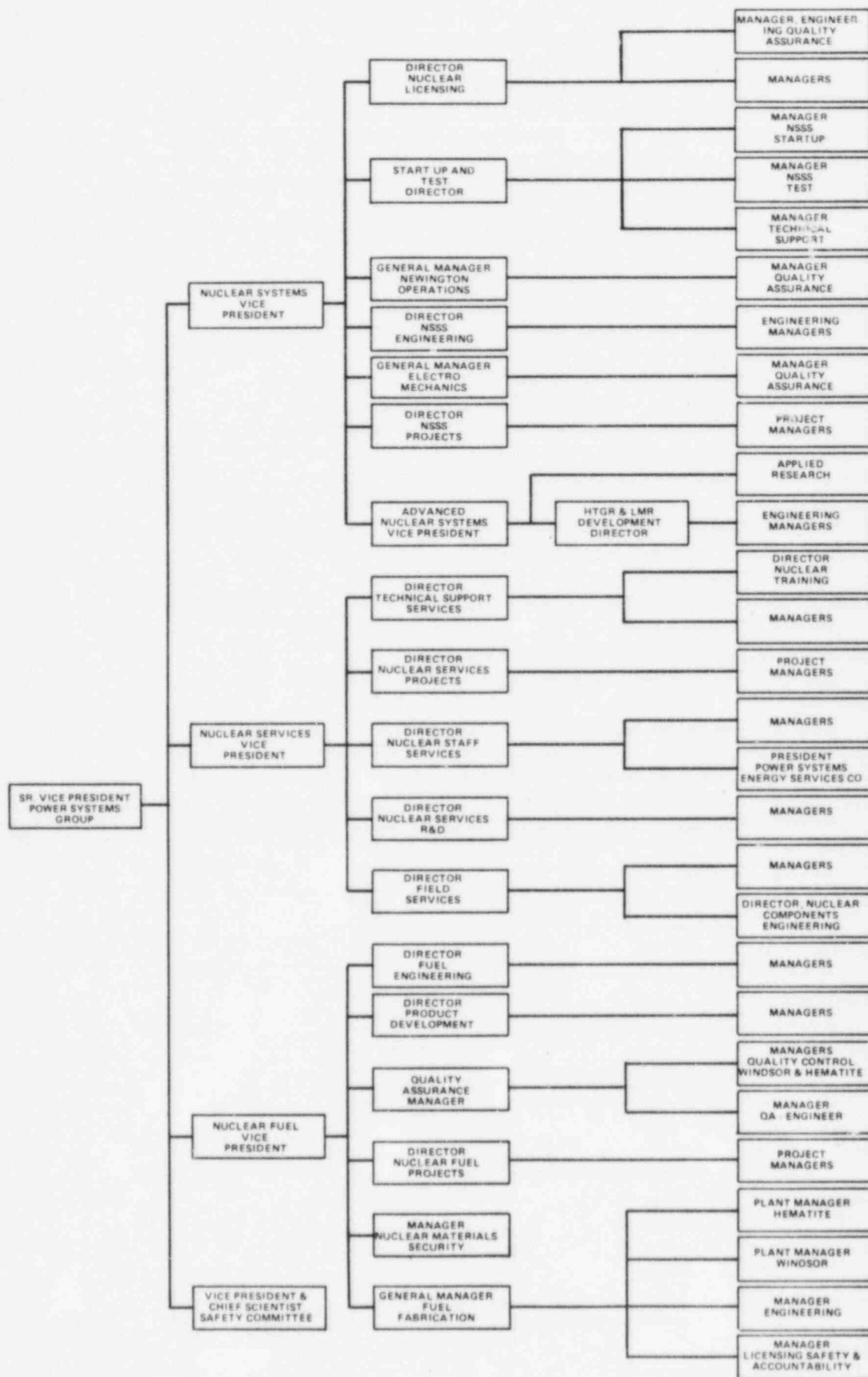


Figure 17-3 (1/86)
NUCLEAR POWER SYSTEMS (DESIGN & MANUFACTURE)

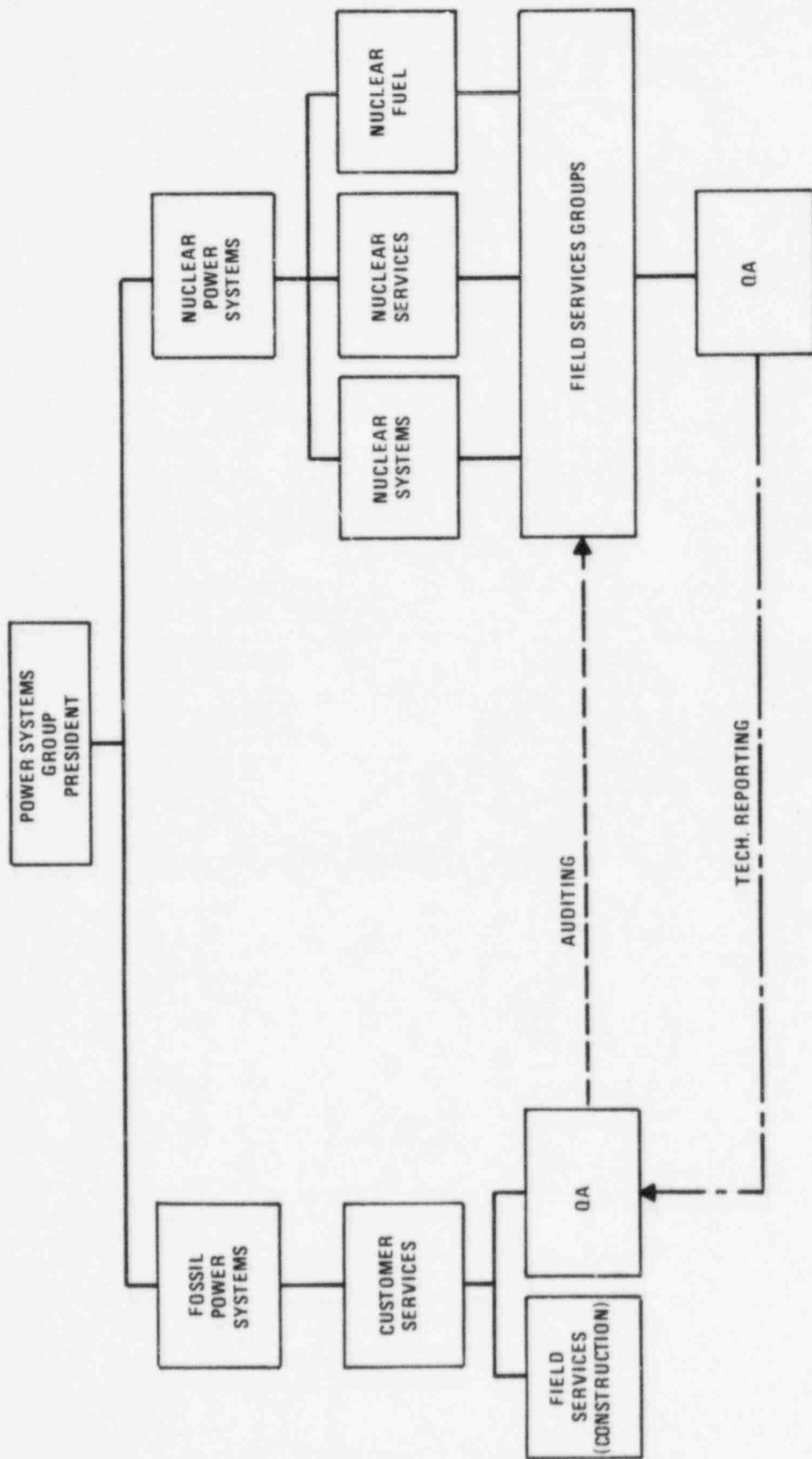


Figure 17-4 (1/86)
FIELD SERVICES AND CONSTRUCTION

