

Chaffee General Hospital
537 West Yoakum Avenue
Box 37
Chaffee, Missouri 63740

Applicant... *Chaffee*
Check No. *129*
Amount Fee Category *7C and*
Type of Fee *7C and*
Date Check Rec'd *8/12/85*
Received By *[Signature]*

U.S. NRC
IN. FEE MGMT. BRANCH

RECEIVED
AUG 21 10:48

June 7, 1985

Materials Licensing Section
U. S. Nuclear Regulatory Commission
Region III
799 Roosevelt Road
Glen Ellyn, Illinois 60137

RE: Amendment to materials license no. *24-24384-01*

Gentlemen:

This is in request of amendment to the above referenced radioactive materials license for the following:

We wish to transport NRC licensed radiopharmaceuticals from our facility for use at:

Chester Memorial Hospital
1900 State Street
Chester, Illinois 62233

This facility does not currently hold an NRC materials license, nor is it receiving radiopharmaceutical doses from another facility. Xenon-133 will not be used at this facility.

Radiopharmaceuticals will be transported on an as-needed basis from the Chaffee General Hospital hot lab to the Chester Memorial Hospital nuclear medicine department (see attached sketch).

Radiopharmaceuticals doses will either be assayed for activity at the Chaffee hot lab prior to transport or we will obtain an additional Rad-Cal dose calibrator for the Chester facility for this purpose. In the latter case, quality control procedures for this instrument would follow procedures already described in our license application.

Individuals whose duties include transporting radioactive materials (NRC authorized user physicians or specifically trained nuclear medicine technologists) must review the following safety procedures, in addition to the NRC Regulatory Guide 10.8, Appendix H procedures, which are part of this institution's radiation safety program:

RECEIVED

AUG 12 1985

REGION III

B512030404 B51030
REG3 LIC30
24-24384-01 PDR

CONTROL NO. 7 954 8

AUG 12 1985

2. If the transport vehicle is an automobile, the materials will be placed in the trunk or hatch area.
3. Vehicles will be locked at all times when the radioactive materials are present, and authorized personnel are not present.
4. If a radioactive spill should occur during transport between facilities, do not leave the vehicle unattended if at all possible, unless the contaminated area can be restricted from unauthorized personnel.
5. In the event of an accident, request the police or other emergency persons to contact the RSO or delegate.
6. Whenever transporting radioactive materials, be certain that a functioning survey meter and complete decontamination kit are available in the transport vehicle.
7. Radioactive materials will be transported in Department of Transportation containers according to DOT regulations. Materials will be shielded to ensure radiation limits are maintained according to applicable NRC and IDNS regulations.
8. Radioactive materials will not be stored in the transport vehicle overnight. The transport vehicle will be surveyed following each day's use to ensure no material or contamination is present.
9. All individuals responsible for transporting byproduct material will be required to review 10 CFR Parts 19 and 20.

A diagram of the imaging area at the Chester Memorial Hospital is enclosed. We confirm radiation levels will be maintained in accord with 10 CFR Part 20.105 regulations.

Radioactive materials transported to Chester Memorial Hospital will be surveyed prior to shipping from Chaffee General Hospital. The shipment will also be surveyed according to NRC Reg. Guide 10.8 Appendix F procedures prior to opening the package at Chester Memorial Hospital. The results of these package surveys will be kept on file for inspection purposes. All radioactive materials will be received from the supplier at the Chaffee General Hospital nuclear medicine facilities. No materials will be delivered by the manufacturer/supplier to the Chester Memorial Hospital imaging department.

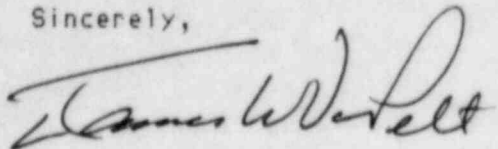
A radiation survey for residual material or contamination will be performed at the Chester Memorial Hospital imaging facility following each day in which nuclear medicine studies are performed. This survey will be done to ensure all material is removed after each use.

All nuclear medicine procedures will be performed under the supervision of at least one of the authorized physician users named on the Chaffee General Hospital NRC license. Please refer to the attached NRC license document.

Also enclosed is a letter from the Chester Memorial Hospital Administrator approving our providing nuclear medicine imaging services there.

Our \$120 hospital check, payable to the U. S. Nuclear Regulatory Commission", is enclosed to cover the amendment application processing fee. If there are any questions concerning this amendment request, please contact Standard Nuclear Consultants, Ltd. directly at (312) 344-7308. Thank you.

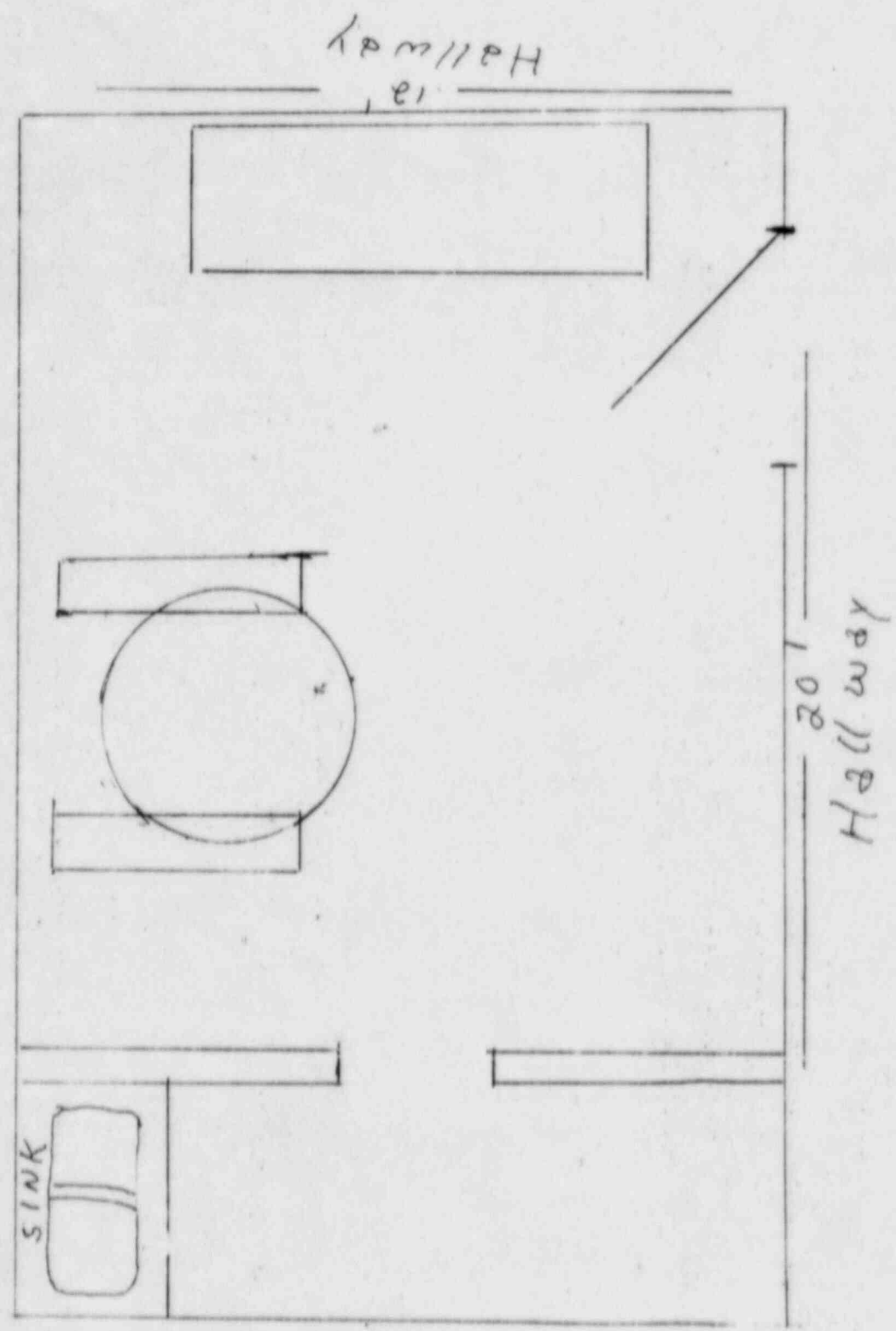
Sincerely,

A handwritten signature in cursive script, appearing to read "James W. Felt". The signature is written in dark ink and is positioned above the printed name "Administrator".

Administrator

Chester Memorial Hosp.
Nuclear Medicine Dept

under ground
outside wall



Storage Room

Equip & supplies

CONTROL NO. 7 9 5 4 8

(Basement Facility)