

PARVEZ SHIRAZI, M.D.
Parkside Center, Suite 609
1875 Dempster Street
Park Ridge, IL 60068

June 25, 1985

U.S. Nuclear Regulatory Commission
Materials Licensing Section
Region III
799 Roosevelt Road
Glen Ellyn, IL 60137

Re: amendment to NRC License #12-24434-01

Gentlemen:

We request amendment to our radioactive materials license to make the following changes:

1. Move of facilities from Suite 290 to Suite 609, Parkside Center. A sketch of the new area is attached for your review. Materials have not been used in Suite 290, therefore a closeout survey should not be necessary.
2. Add Nhasuda Khedkar, M.D., Janet Hitzman, M.D., and Arif Azam, M.D. as physician users for these devices. For preceptor and training records on Dr. Khedkar, please refer to the NRC license #12-09567-01 for Lutheran General Hospital, Park Ridge, IL. For Drs. Hitzman and Azam, please refer to NRC license #12-17939-01 for Mercy Center Hospital, Aurora, IL.
3. Because of the high cost of the radionuclide sources for the devices, (\$7000-8000 for the Gd-153 source) we request authorization to also use the source at another facility, Mercy Center Hospital, 1325 N. Highland Ave., Aurora, IL 60006. The source would be used on an as-needed basis at both locations so this cost could be shared between the facilities.

The sources would be transported in their respective shielded holders in DOT approved containers and at no time will sources be removed from their shielding. All materials will be transported according to applicable DOT/NRC transportation regulations.

During transport, the source container will be placed away from the passenger compartment (in the trunk or hatch). The sources will be secured at all times to prevent unauthorized access to them. Only the licensed physician users or other employees who have received the "Personnel Training Program" instructions will transport the sources.

RECEIVED

JUL 17 1985

JUL 17 1985

REGION III

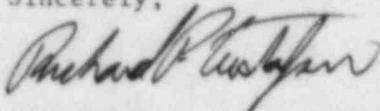
CONTROL NO. 7 9359

8601170157 851831
REG 3 LIC 30
12-24434-01 PDR

4. In addition to receiving I-125 and Gd-153 sources from AECL and Gulf Nuclear, we request authorization to also receive equivalent sources from other manufacturers such as Amersham and New England Nuclear as they become approved by the NRC.
5. Because the sources may be as much as 25% higher than the stated activity when they are shipped from the supplier, we request the "per source" activity limit be raised to 250 mCi for the I-125 source and 1.25 curies for the Gd-153 source. Also, please raise the I-125 possession limit to 500 mCi and the Gd-153 possession limit to 3 Ci to provide additional coverage for times when source holders are being exchanged.

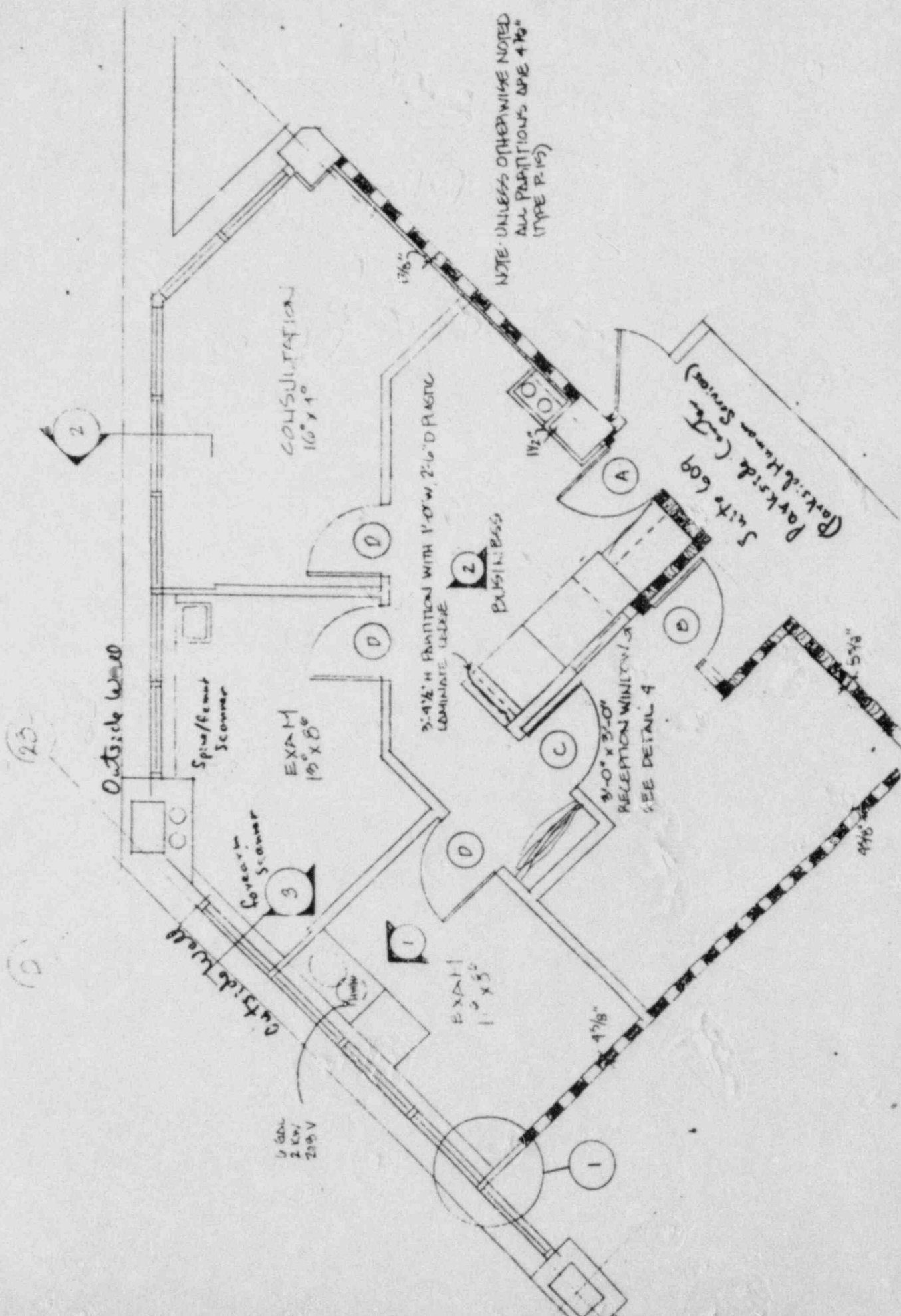
Thank you for your attention to this matter and we look forward to receiving this amendment. Our corporate check for \$125.00 to cover the NRC amendment processing fee is attached.

Sincerely,



Richard Gustafson, President
Parkside Human Services

609 Parkside Center.



NOTE: UNLESS OTHERWISE NOTED
ALL PARTITIONS ARE 4 1/2"
(TYPE R-15)

CONSULTATION
16' x 10'

5'-9 1/2" H PARTITION WITH 1'-0" W 2'-6" D P.A.M.C.
LOWMATE LELKE

BUSINESS

Suite 609
Parkside Center
(Parkside Home Services)

Outside Wall

Spine/Remat Scanner

EXAM
10' x 10'

Spine/Remat Scanner

8'-0" x 3'-0"
RECEPTION WINDOW
SEE DETAIL 4

16' x 10'
25' x 5' V

EXAM
10' x 10'

4 1/2"

5 1/2"

4 1/2"

23

2

2

A

C

D

D

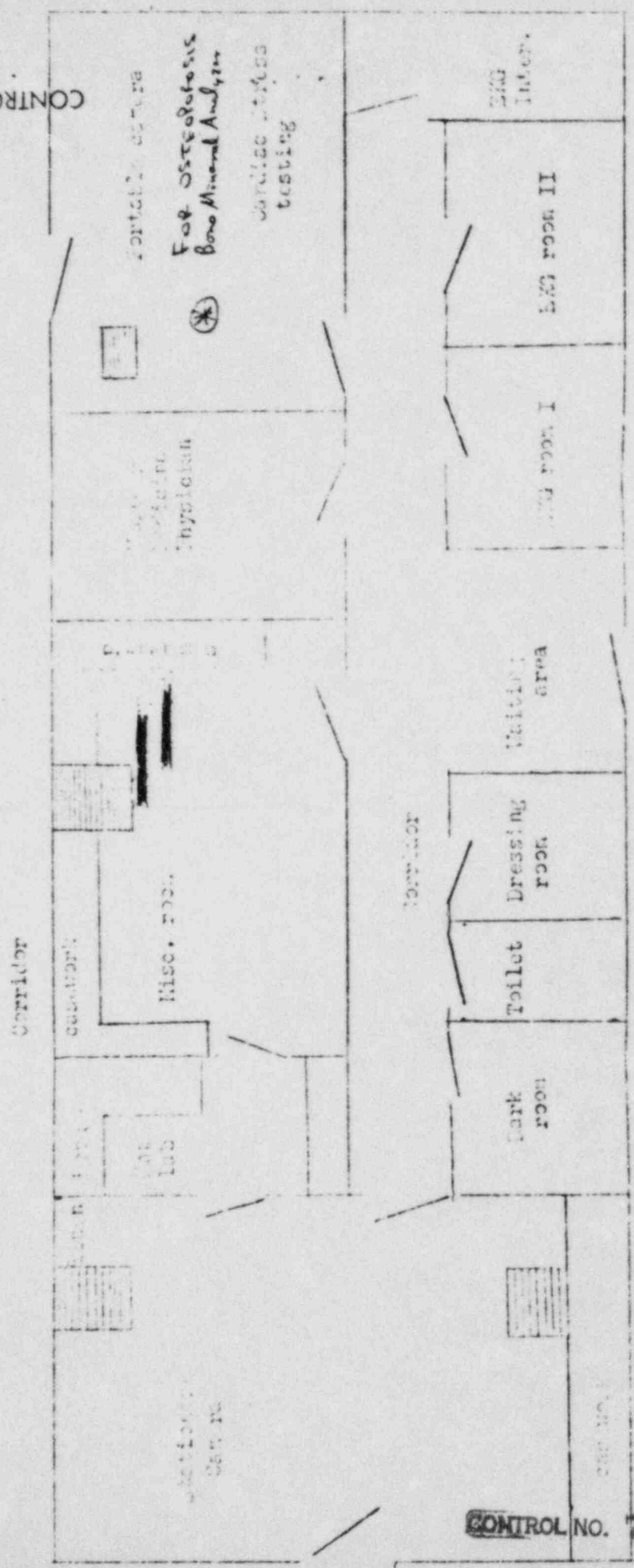
D

D

1

1

《——·——》 16. 1. 16



CONTROL NO. 7 935 9

Corridor
Sketch of nuclear medicine
Overall Research and Application
Mercy Center Hospital, Auburn, AL. 1991