

FACSIMILE COVER PAGE

To: Maria Lopez-Otin
From: Michael Schoppman
Subject: FW: TFP Biography
Pages (including cover): 2

Time: 09:49:04
Date: 10/14/96

To: Maria Lopez-Otin
Fm: Mike Schoppman - FPL
Subj: T F Plunkett Biography

A brief biography of Tom Plunkett, President - Nuclear Division at Florida Power Light Company, is attached for your information. Tom is looking forward to his meeting with Commissioner Diaz, scheduled for 9 A.M. on Thursday, November 21, 1996.

Please call me in Bethesda at 656-6100 if you need additional information.

*P.O.
Florida Power
& Light
or by
Florida P.L.
St. Lucie*

5/18

Biographical Information



Thomas F. Plunkett President, Nuclear Division

Thomas F. Plunkett serves as president of the nuclear division and member of the board of directors at Florida Power & Light Company. In this capacity, Mr. Plunkett oversees the operation of FPL's four nuclear units, two at Turkey Point in south Dade County and two at St. Lucie on Hutchinson Island in St. Lucie County as well as the associated technical support activities at corporate headquarters in Juno Beach, Florida.

Mr. Plunkett, a 33-year veteran of the nuclear power industry, began working for FPL in 1990 as vice president of the Turkey Point nuclear power plant. During his tenure at Turkey Point, the facility progressed from one of the nation's most troubled nuclear power stations to one of the best.

Prior to joining FPL, Mr. Plunkett served as general manager of the River Bend nuclear power station for Gulf States Utilities Company in Louisiana. Mr. Plunkett began his career with McDonnell Douglas Corporation's nuclear department. He later served as a technical supervisor for Indiana and Michigan Power Company's D.C. Cook nuclear plant. In 1977, Mr. Plunkett moved to Illinois Power Company as plant manager of the Clinton nuclear power station.

Mr. Plunkett is a graduate of the University of Wisconsin with a BS degree in mechanical engineering and an MS degree in nuclear engineering.

FLORIDA POWER & LIGHT

NUCLEAR DIVISION PRESIDENT

MEETING WITH USNRC

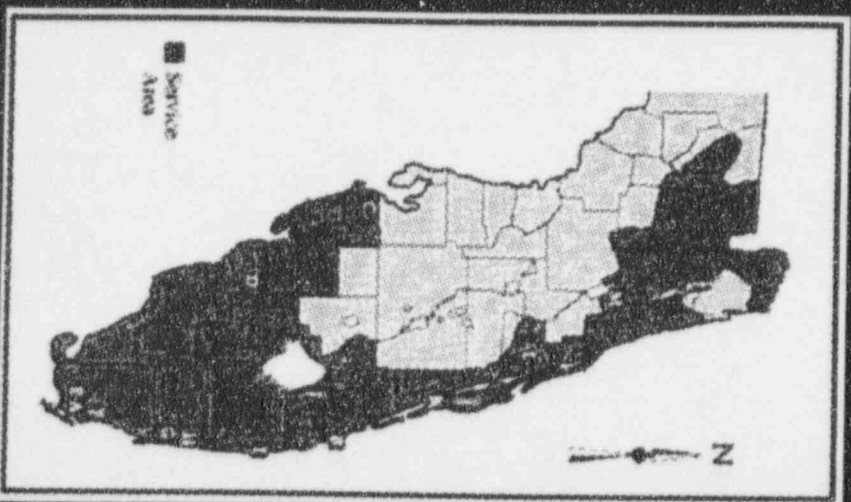
November 21, 1996

WHITE FLINT, MD

6/1/9

About Florida Power & Light

FPL SERVICE AREA



- One of the Largest Investor-Owned Electric Utilities
- Serves 7 Million
- FPL's Total Capacity 18,200 MW
- Peninsular Location Limits Competitive Threat

NUCLEAR DIVISION PRESIDENT MEETING WITH USNRC

AGENDA

- Introduction - About Florida Power & Light
- Turkey Point Performance
- St. Lucie Performance
- Economics
- Issues
- Future

About Florida Power & Light

FPL SERVICE AREA



- One of the Largest Investor-Owned Electric Utilities
- Serves 7 Million
- FPL's Total Capacity 18,200 MW
- Peninsular Location Limits Competitive Threat

Turkey Point Performance

TURKEY POINT TURNAROUND:

- Watch List from December 1987 to February 1990
- Plant Status - Fall 1990
 - ◆ High Management Turnover, Overtime and Absenteeism
 - ◆ Reliance on Long-Term Contractors
 - ◆ Poor Material Condition
 - ◆ Backlogs
 - ◆ Short-Term Maintenance Approach

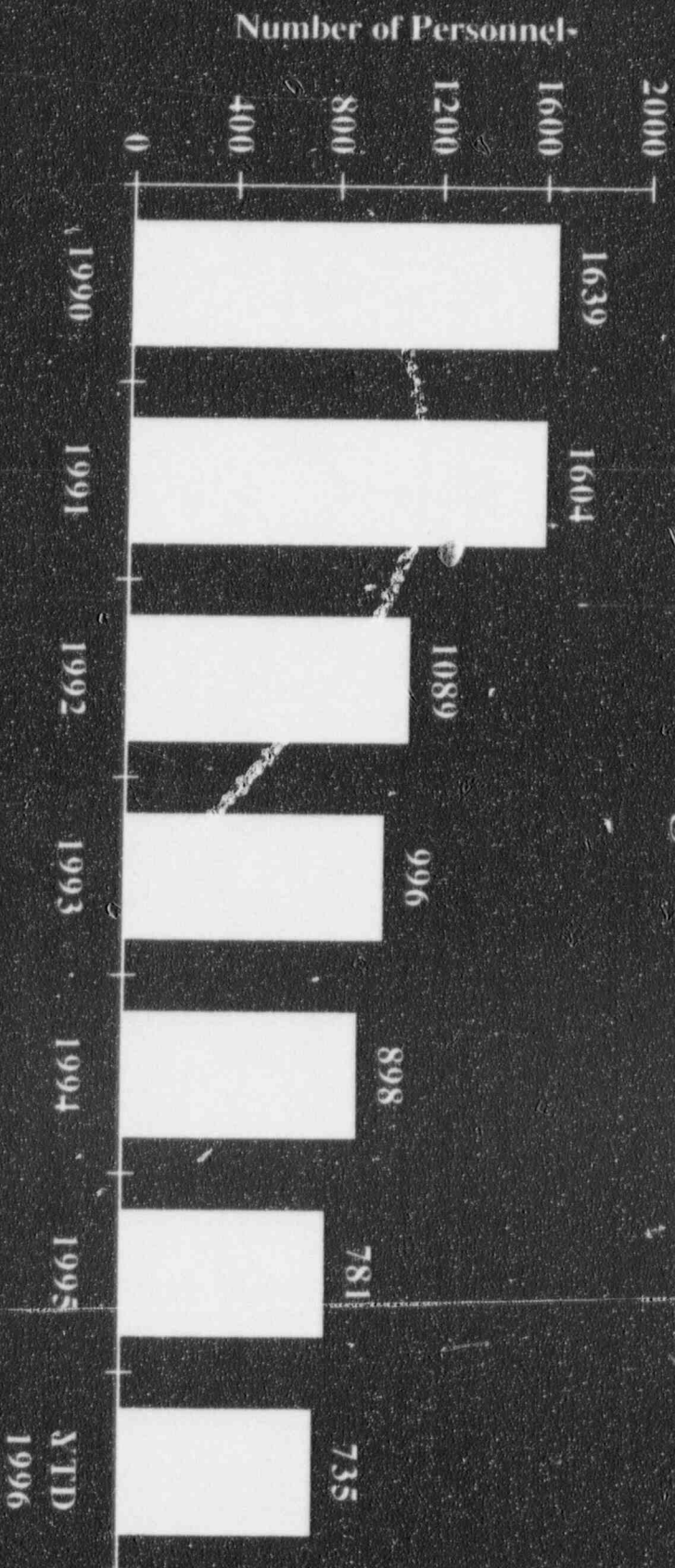
Turkey Point Performance

TURKEY POINT TURNAROUND:

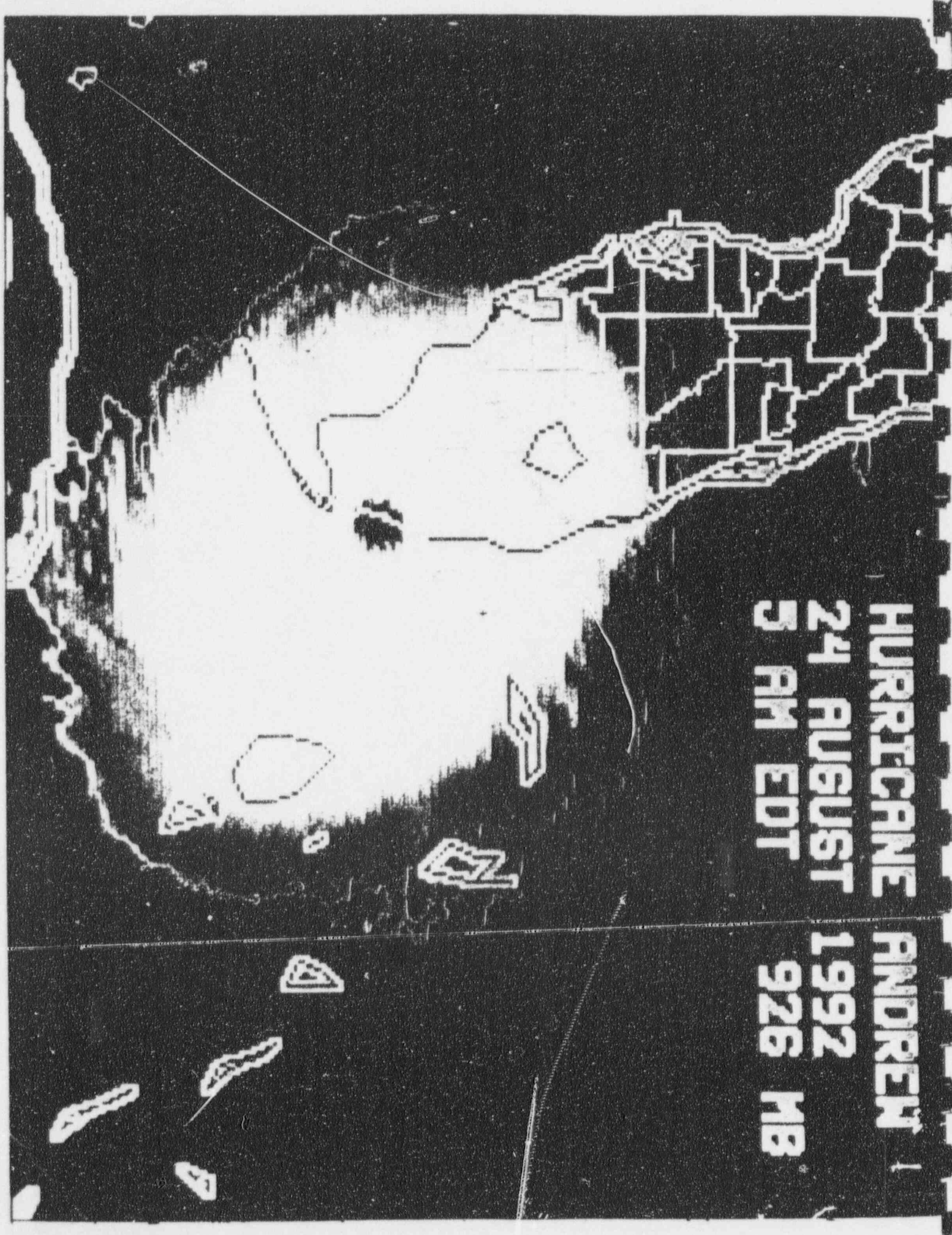
- Corrective Actions
 - ◆ Prudent, Conservative Operation Stressed
 - ◆ Maintaining Plant for the Long Term
 - ◆ Accountability for Actions
 - ◆ Strong Corrective Action Program
 - ◆ Open Book Relationship with NRC
 - ◆ Formal Employee Concerns Program
 - ◆ Significant Staff Reductions

Turkey Point Performance

Staffing Levels (Employees and Long-Term Contractors)



HURRICANE ANDREW
24 AUGUST 1992
5 AM EDT 926 MB





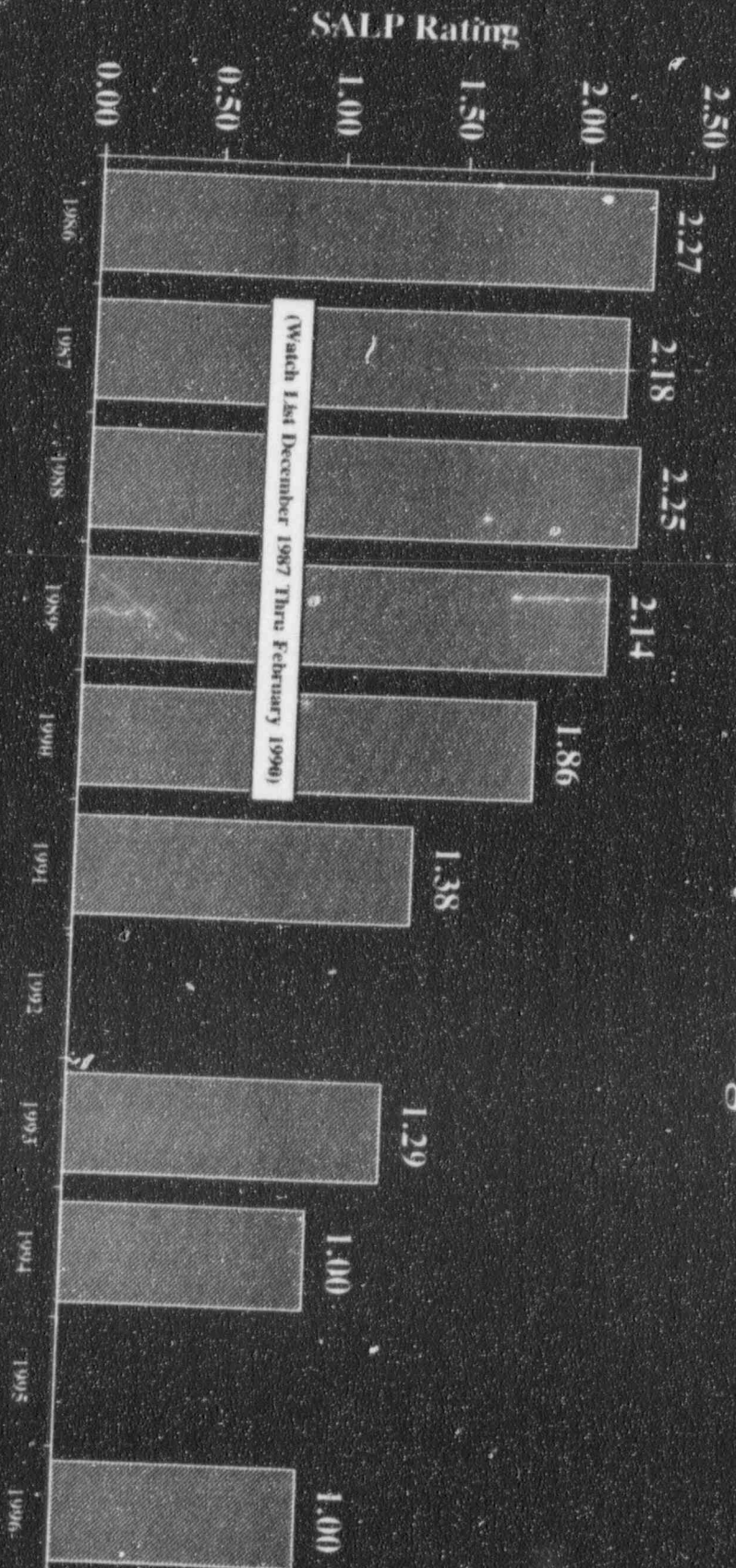
Turkey Point Performance

"RAISING THE BAR":

- Prevent Complacency
 - ◆ Benchmarking
 - ◆ Indicators
 - ◆ Accountability
- Continue Self-Assessments
- Condition Reporting

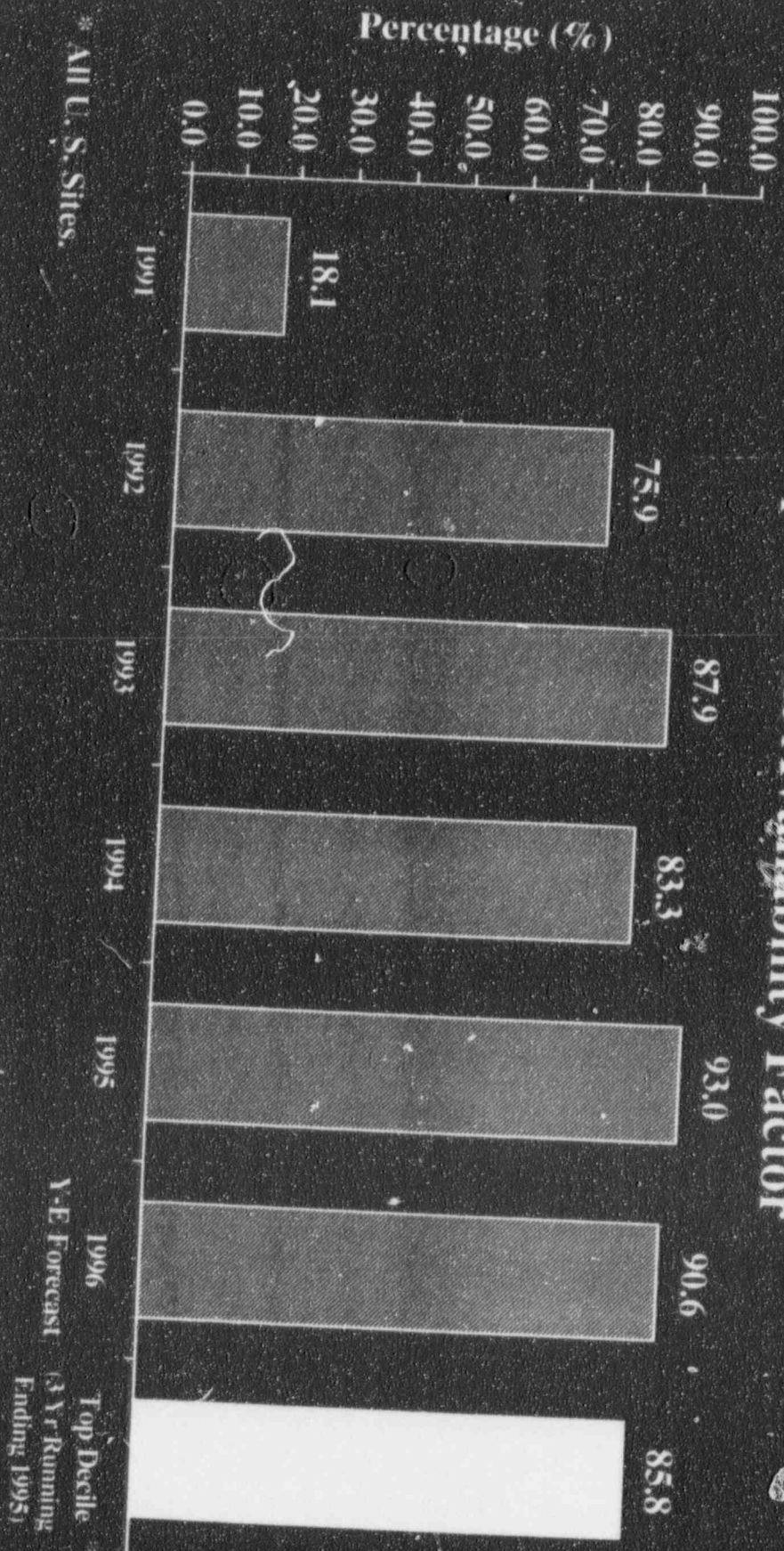
Turkey Point Performance

SALP Category Ratings



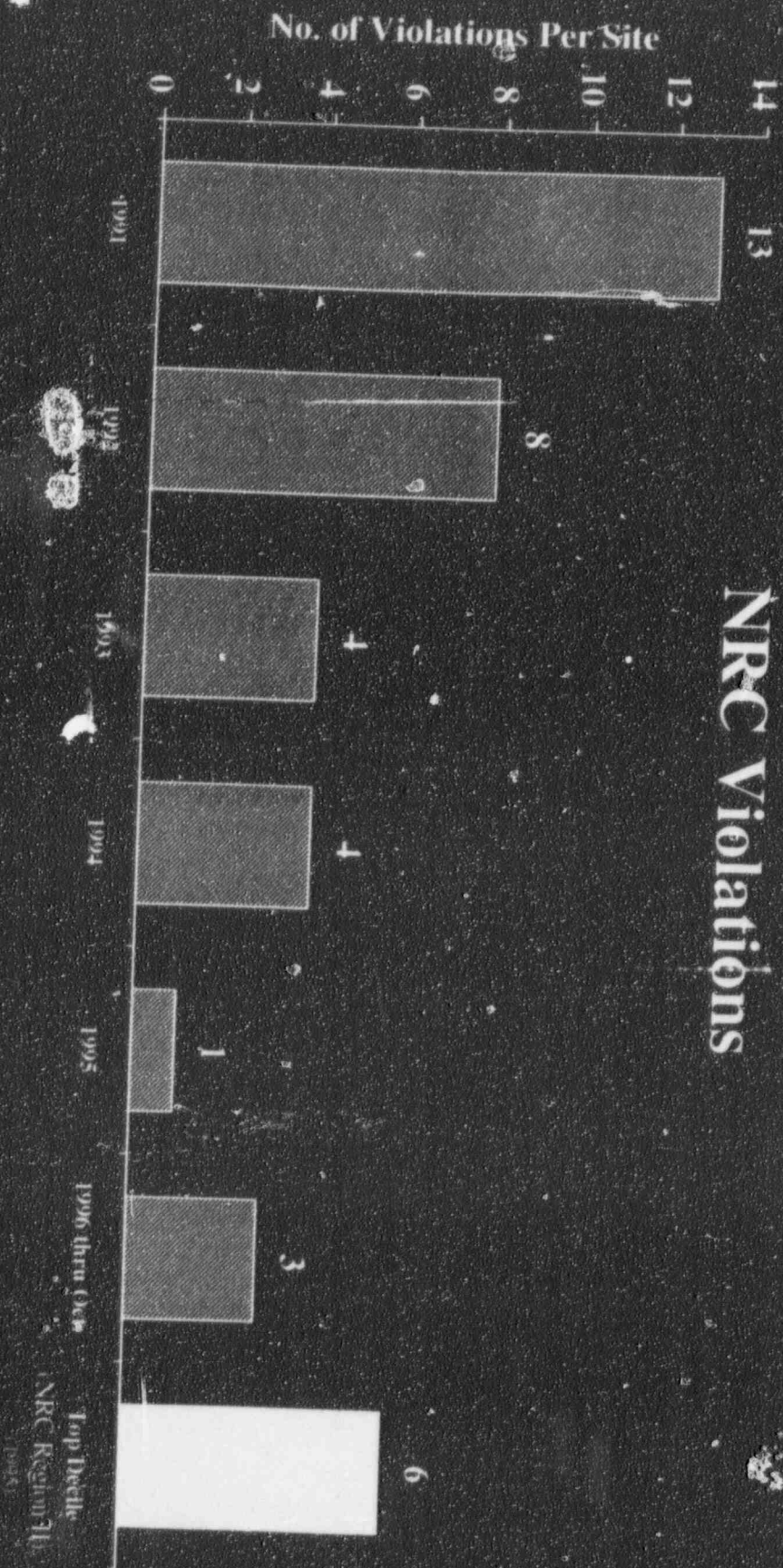
Turkey Point Performance

Equivalent Availability Factor



Turkey Point Performance

NRC Violations

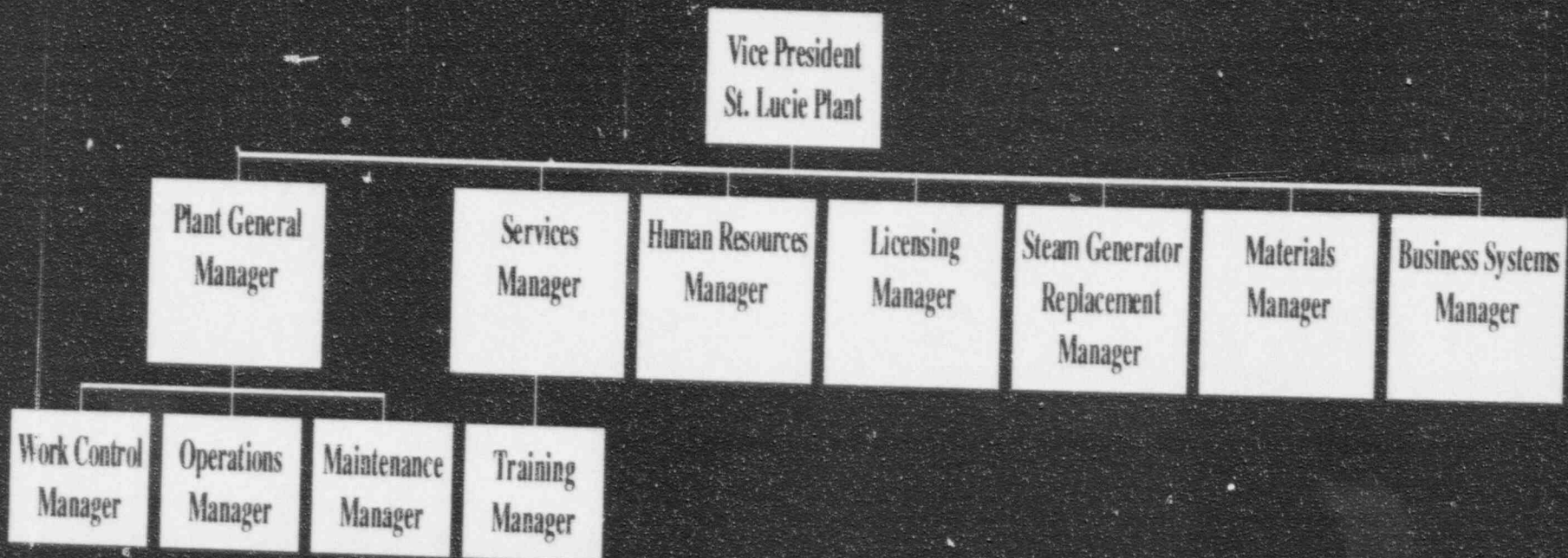


St. Lucie Performance

- "Excellent" Plant Now Average - WHAT HAPPENED?
- Self-Assessment Team Identified Eight Fundamental Weaknesses
 - ◆ Complacency
 - ◆ Training
 - ◆ Self-Assessment
 - ◆ Corrective Action
 - ◆ Accountability
 - ◆ Programs/Processes/Procedures
 - ◆ Change of Management
 - ◆ Communications

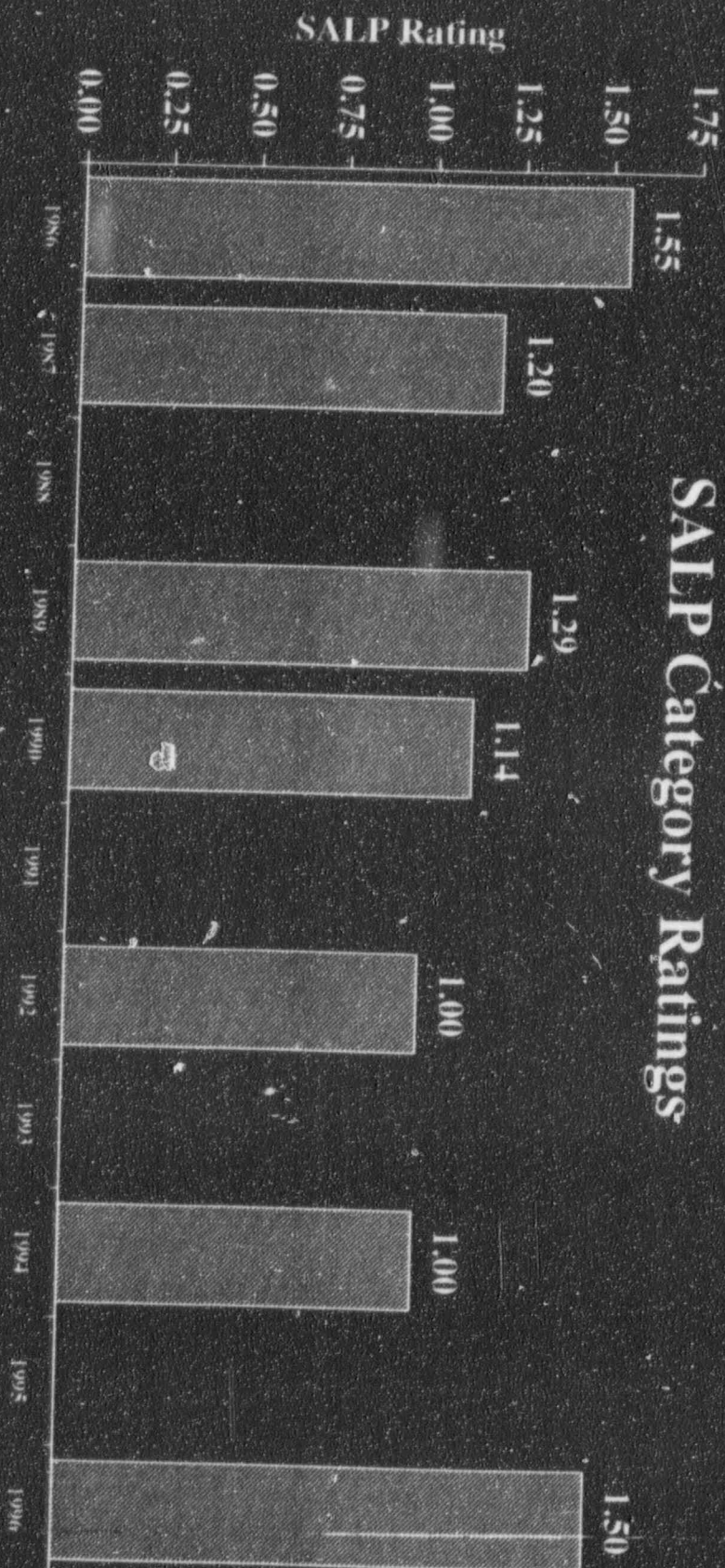
St. Lucie Performance

Organizational Changes



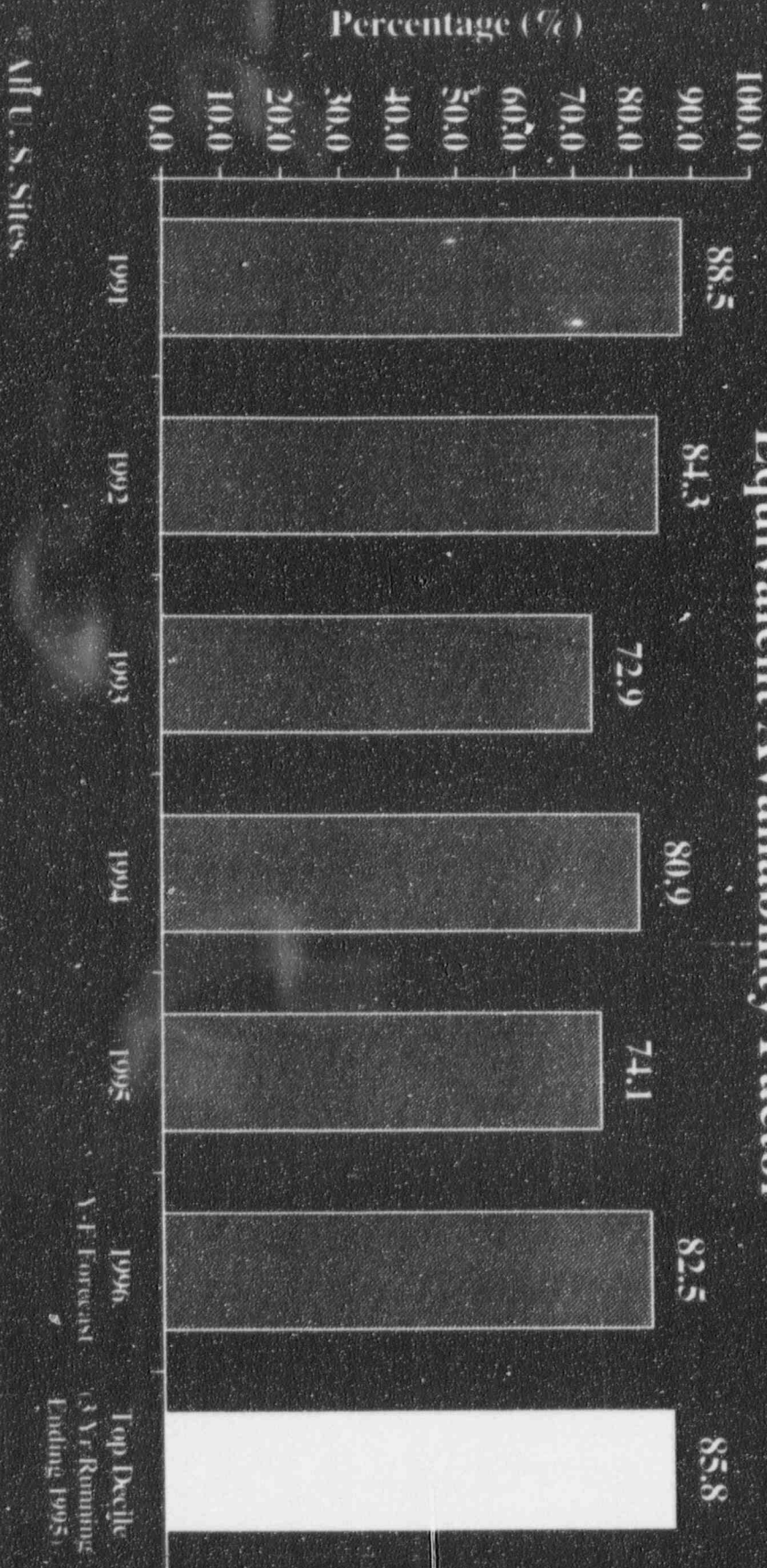
St. Lucie Performance

SALP Category Ratings



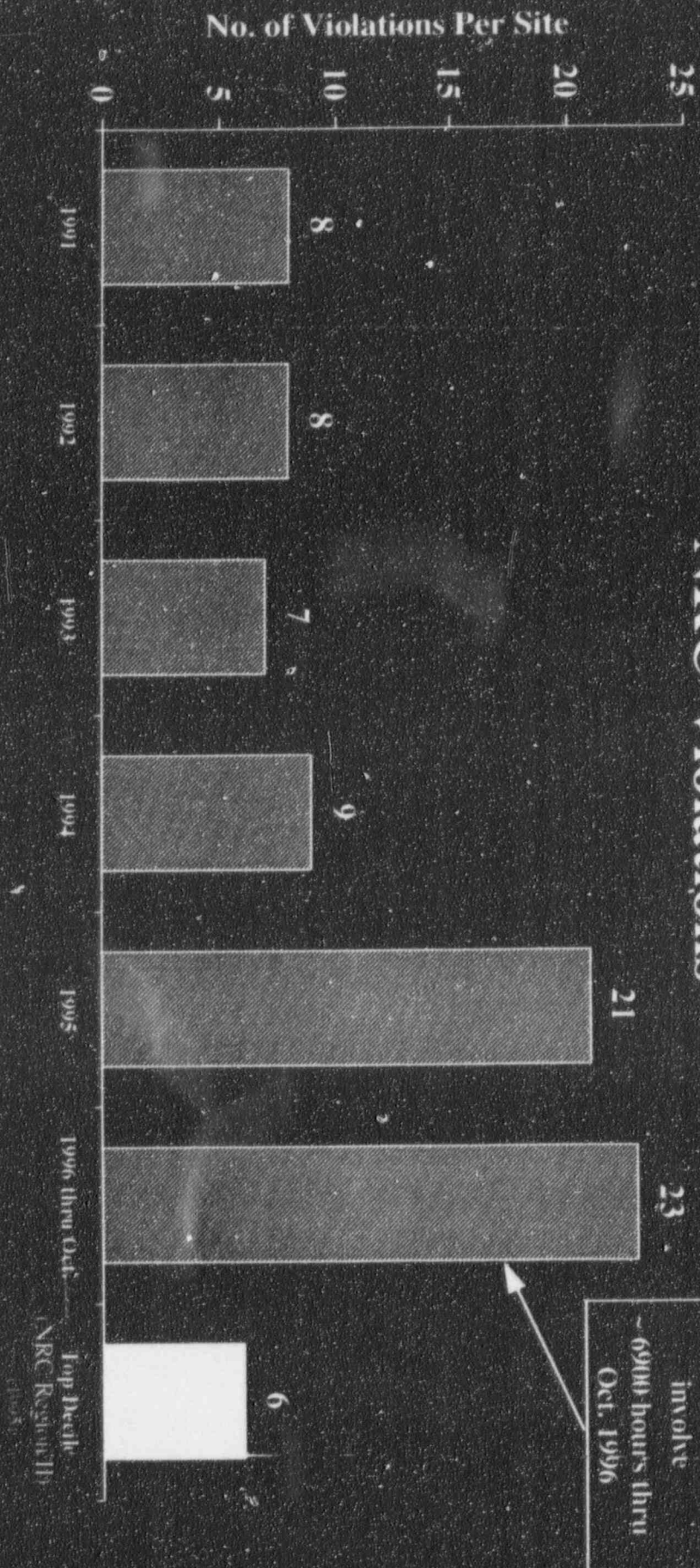
St. Lucie Performance

Equivalent Availability Factor



St. Lucie Performance

NRC Violations



Issues

- FSAR/Design Basis
- Maintenance Rule
- INPO

Future

- Safety
- 1c/KWh by 1998
- License Renewal