

AUG 23 1985

MEMORANDUM FOR: Hugh L. Thompson, Jr., Director
Division of Licensing

FROM: Dennis M. Crutchfield, Assistant Director
for Safety Assessment, DL

SUBJECT: SUMMARY OF THE OPERATING REACTORS EVENTS
MEETING ON AUGUST 13, 1985 - MEETING 85-13

On August 13, 1985, an Operating Reactor Events meeting (85-13) was held to brief the Office Director, the Division Directors and their representatives on events which occurred since our last meeting on July 23, 1985. The list of attendees is included as Enclosure 1.

The events discussed and the significant elements of these events are presented in Enclosure 2. In addition, the assignment of follow-up review responsibility was discussed. The assignments made during this meeting and the status of previous assignments are presented in Enclosure 3.

Completion dates have been assigned for items in Enclosure 3. Note that we have revised Enclosure 3 to facilitate computerized tracking and provide additional details regarding responsibilities and status. Each assignee should review Enclosure 3 with regard to their respective responsibilities and advise ORAB if the target completion date cannot be met. If an assignee has any questions, please contact D. Tarnoff, x29526.

151

Dennis M. Crutchfield, Assistant Director
for Safety Assessment, DL

Enclosures:
As Stated

DISTRIBUTION
Central Files
NRC PDR
ORAB Rdg
ORAB Members

cc w/encl:
See next page

8509040031 850823
PDR MISC
8509040031 PDR

ORAB:DL
DTarnoff:c1
8/19/85

SL:ORAB:DL
RWessman
8/22/85

C:ORAB:DL
GHolahan
8/22/85

AD/SA:DL
DCrutchfield
8/22/85

IDAR-5-1
OPERATING
EXPERIENCE

ENCLOSURE 1

LIST OF ATTENDEES

OPERATING REACTORS EVENTS BRIEFING (85-13)

AUGUST 13, 1985

J. B. Henderson, IE-DEPER	H. Nicolaras, DL/ORB 4
V. Thomas, IE-DEPER	E. Goodwin, OPE
E. Utz, IE-DEPER	M. Caruso, DL/ORAB
E. Weiss, IE-DEPER	D. Neighbors, NRR/DL/ORB 1
S. Long, IE-DEPER-EAB	D. Ziemann, NRR/DHFS
H. Bailey, IE-DEPER-EAB	J. T. Beard, NRR/ORAB
R. Smith, IE-DEPER-EAB	R. Wessman, NRR/ORAB
G. Lanik, IE-DEPER-EAB	G. Holahan, NRR/ORAB
S. Schwartz, IE-DEPER	J. Zwolinski, NRR/DL
F. Manning, RES DRAO	J. P. Knight, NRR/DL
W. H. Regan, NRR/DHFS	G. Lainas, NRR/DL
D. H. Jaffe, DL/ORB 3	H. Thompson, Jr., NRR/DL
P. Sears, DL/ORB 3	E. Butcher, NRR/DL
J. Stone, IE/VPB	R. Houston, DSI
R. R. Frisch, CONSUMERS POWER COMPANY	D. Jolliffe, IE-EAB
T. S. Rotella, DL/ORB 5	C. Hsu, AEOD
R. Hernan, PPAS	H. Ornstein, AEOD
S. Black, NRR/DL	S. Rubin, AEOD
G. Edison, NRR/DL	W. Lanning, AEOD
G. Dick, NRR/DL	V. Hodge, IE
K. Mitchell, NRR/DL/ORAB	

TURKEY POINT PLANT - 10 CFR 21 NOTIFICATION -

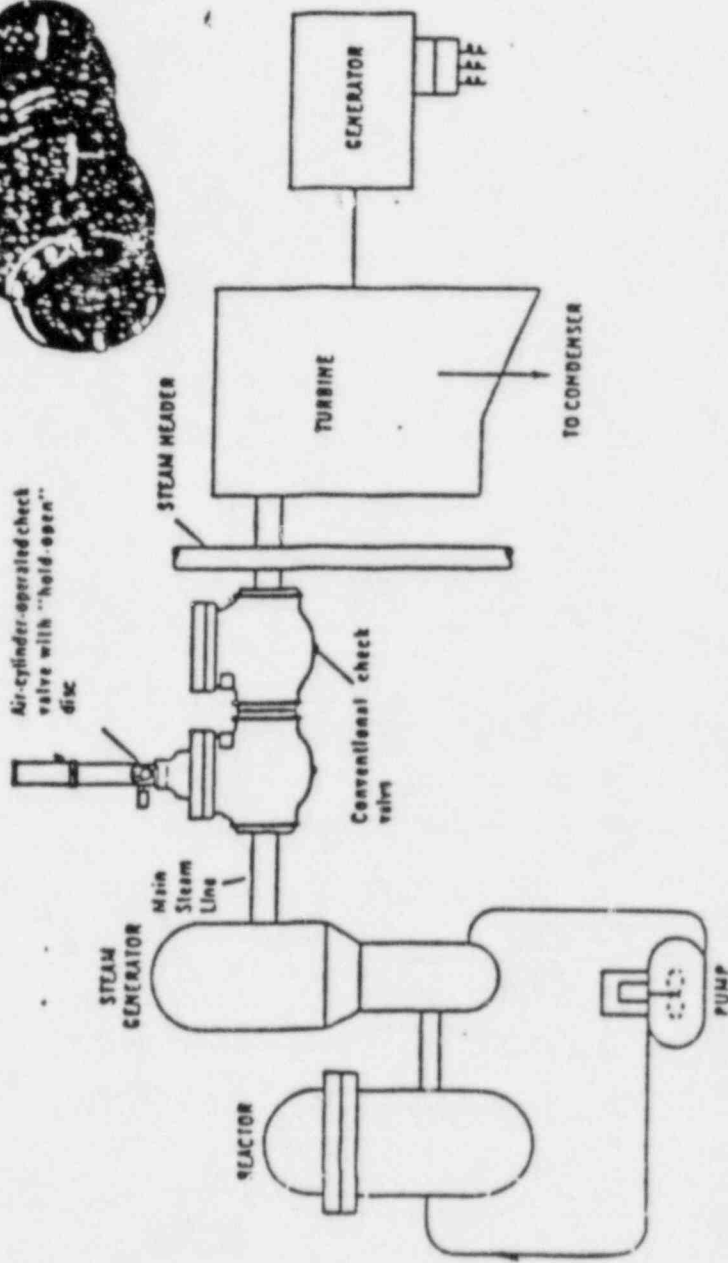
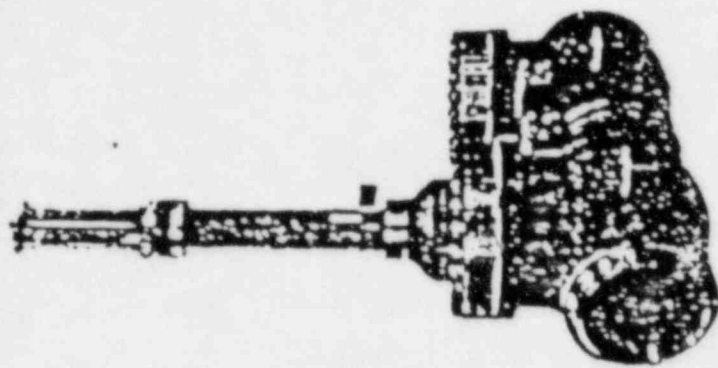
MSIV DESIGN DEFICIENCY

JULY 23, 1985 (H. BAILEY)

- PLANT STATUS
 - UNIT 4 AT POWER, UNIT 3 STARTUP FROM 100 DAY REFUELING
- DEFICIENCY
 - INADEQUATE STORED CLASS 1 AIR SUPPLY TO CLOSE MSIVs AT LOW OR NO STEAM FLOW
 - RE-EVALUATED ACCIDENTS MSIVs TAKEN CREDIT FOR
 - MSLB COULD RESULT IN CONTINUED BLOWDOWN AND LOSS OF MOTIVE POWER FOR STEAM DRIVEN AUX FEED PUMPS
- IDENTIFICATION AND NOTIFICATION
 - FPL IDENTIFIED AS POTENTIAL PROBLEM 11/84
 - REGION INFORMED OF POTENTIAL PROBLEM
 - ANALYSIS AND TESTS PERFORMED
 - PART 21 NOTIFICATION BY TELEPHONE 7/23/85
WRITTEN 7/29/85
- CORRECTIVE ACTIONS
 - PROCEDURES REQUIRING PLANT SHUTDOWN ON LOSS OF PLANT AIR
 - BACKUP DIESEL DRIVEN AIR COMPRESSOR AVAILABLE
 - DESIGN MODIFICATION
- GENERIC IMPLICATIONS
 - FOUR PLANTS POTENTIALLY AFFECTED HAVE BEEN NOTIFIED
TURKEY POINT ST. LUCIE
ROBINSON CONN. YANKEE
- NRC FOLLOWUP
 - VERIFY DESIGN MODIFICATIONS AND IMPLEMENTATION
 - POTENTIAL FOR INFORMATION NOTICE - DISCONNECT NON IE AIR SUPPLIES DURING PERFORMANCE TEST

SCHUTT & KOERTING

MSIVs



AIR OPERATOR

AIR ACCUMULATORS

CHECK VALVE

RMNT AIR

STEAM FLOW

TURKEY POINT
MSIV

MOV BYPASS

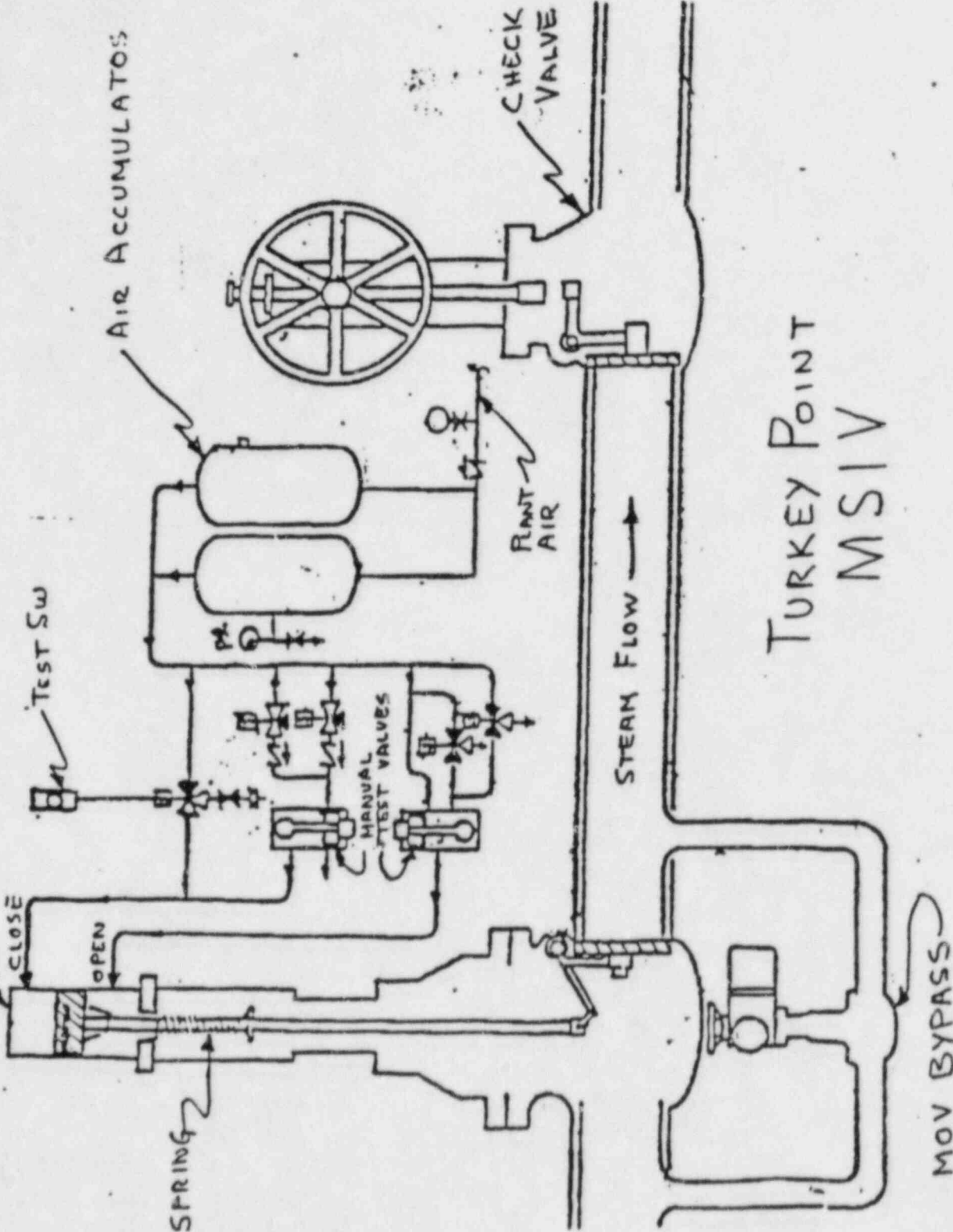
TEST SW

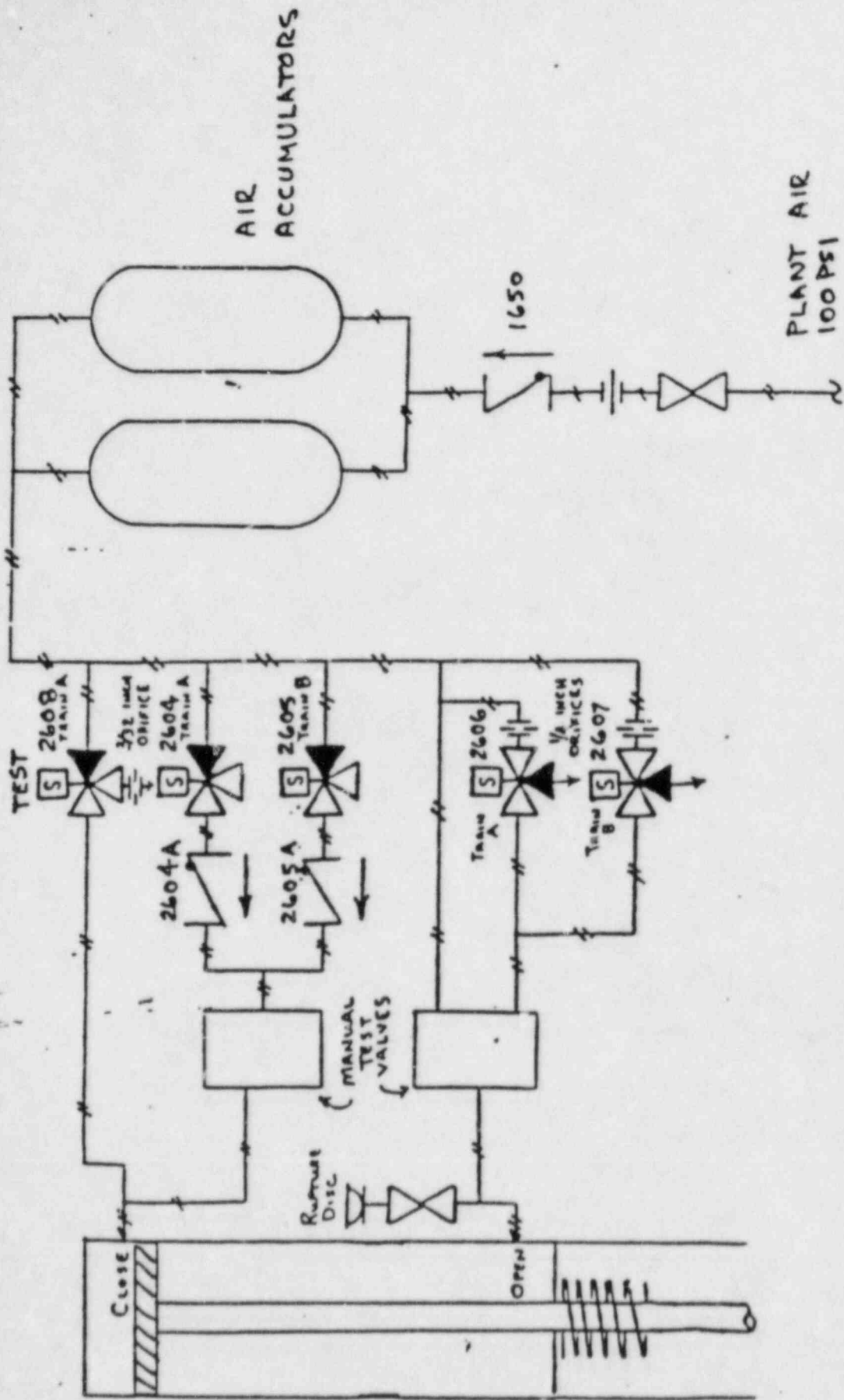
HAND VALVES

SPRING

OPEN

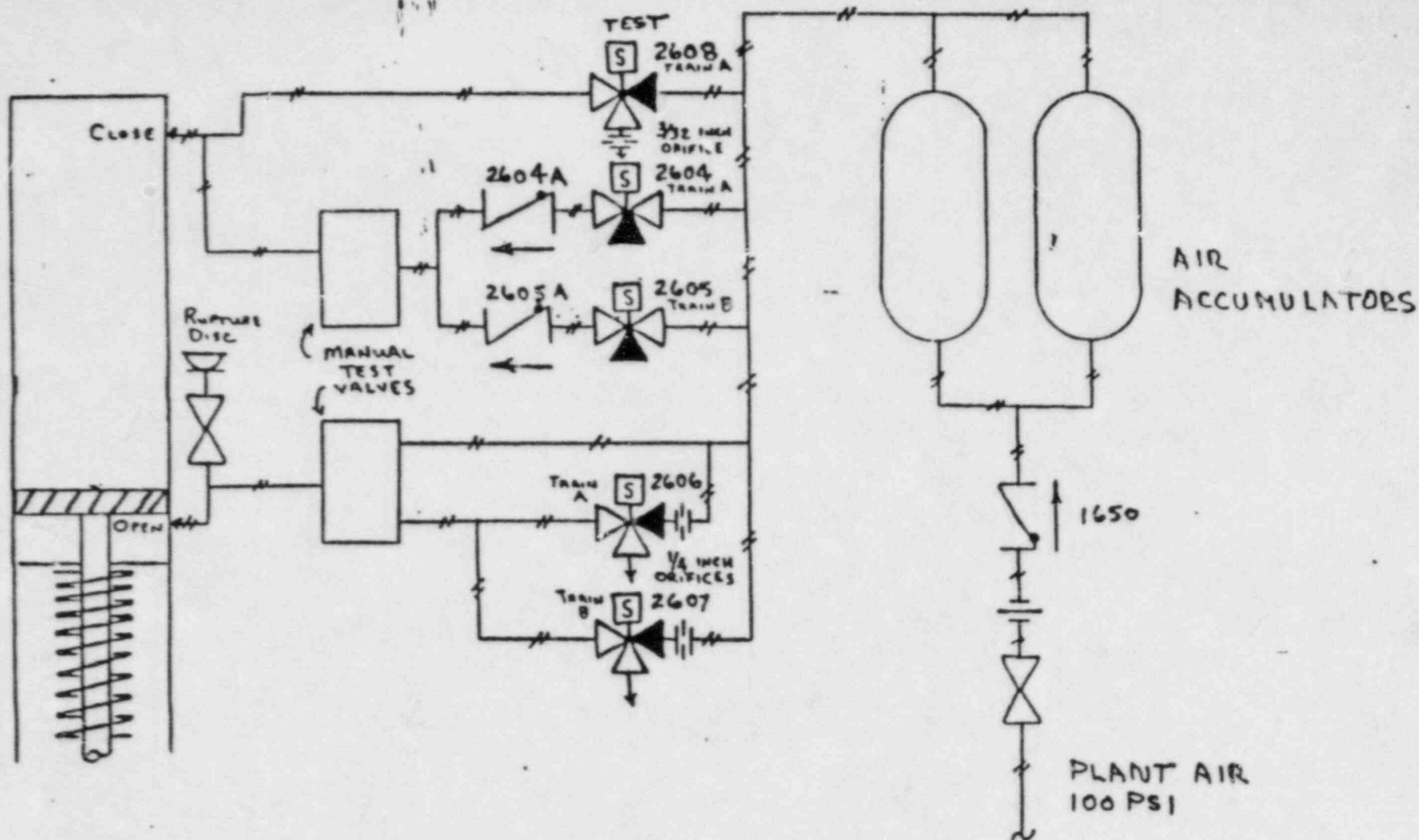
CLOSE





MSIV OPEN

MSIV A(B,C)	ENERGIZED	DEENERGIZED
2608 (2613, 2618)		X
2604 (2609, 2614)		X
2605 (2610, 2615)		X
2606 (2611, 2616)	X	
2607 (2612, 2617)	X	
NEW 2-WAY S.V.'S		X



MSIV CLOSED

MSIV A(B,C)	ENERGIZED	DEENERGIZED
2608 (2613, 2618)		X
2604 (2609, 2614)	X	
2605 (2610, 2615)	X	
2606 (2611, 2616)		X
2607 (2612, 2617)		X
NEW 2-WAY S.V.'S	X	

TURKEY POINT - RECENT MULTIPLE INVERTER FAILURES

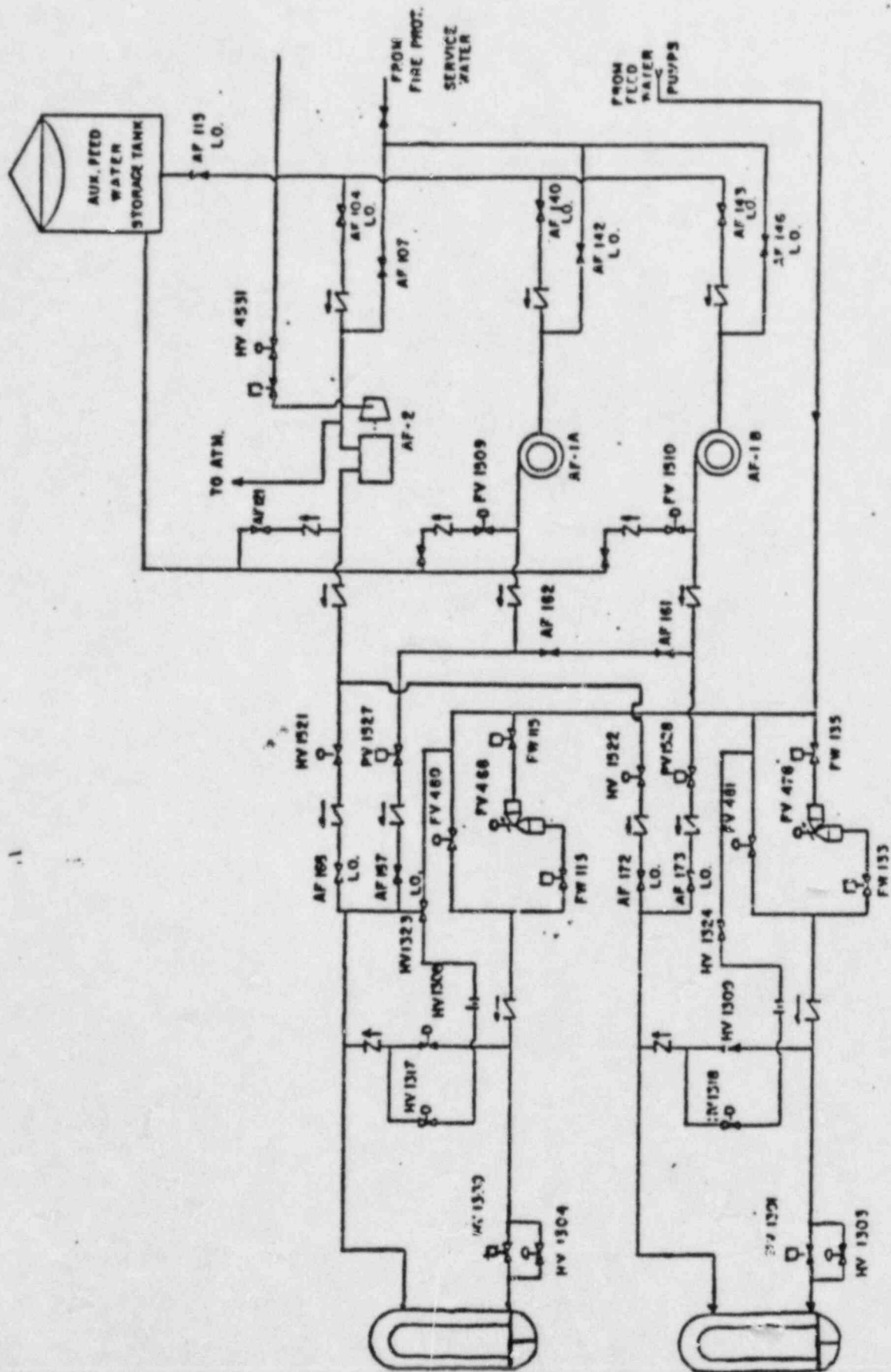
(H. BAILEY 1E)

- TURKEY POINT HAS EXPERIENCED 16 INVERTER TRIPS IN 4 MONTHS (APRIL 4, 1985 TO AUGUST 1, 1985)
- FIVE INVERTER LOSSES RESULTED IN REACTOR TRIPS (SINGLE UNIT) IN TWO MONTHS.
- SAFETY SIGNIFICANCE - CHALLENGES TO THE SAFETY SYSTEMS AND INTERACTION BETWEEN PLANTS AND POTENTIAL DUAL-PLANT TRIPS
- TYPICAL SCENARIO FOR REACTOR TRIP FROM POWER:
 - TURBINE RUNBACK ON ROD DROP SIGNAL
 - HIGH TAVE DUE TO LOSS OF AUTO ROD CONTROL
 - HI OR LO SG LEVEL DUE TO LOSS OF AUTO FEEDWATER CONTROL
 - REACTOR TRIP DUE TO REAL AND/OR FALSE SIGNALS
 - SI ACTUATES DUE TO FALSE SIGNALS
 - PRESSURIZER SPRAY VALVE FAILS AS IS
 - PRESSURIZER HEATERS LOCK OUT
 - DIESELS START, BUT DO NOT LOAD
 - SPARE INVERTER IS PUT ON LINE AND SYSTEMS RETURNED TO NORMAL.
- OLD "EXIDE" INVERTERS BEING REPLACED BY NEW "SOLID STATE CONTROLS" INVERTERS

- FOUR NEW INVERTERS PLACED IN SERVICE SINCE LAST REACTOR TRIP ON 8/1/85. THE REMAINING EIGHT INVERTERS (TOTAL OF 12) WILL BE REPLACED SHORTLY.
- NEW INVERTERS ARE DESIGNED TO MINIMIZE INTERACTION BETWEEN UNITS 3 AND 4 WHEN LOADING AND UNLOADING INVERTERS.
- PROCEDURES FOR LOSS OF 120V INSTRUMENT PANEL HAVE BEEN UPGRADED AND OPERATORS RETRAINED.
- GENERIC APPLICABILITY UNDER INVESTIGATION.

FOREIGN REACTOR EVENT - MULTIPLE FEEDWATER
FAILURES DUE TO FAILURE OF A SINGLE INVERTER
MARCH 2 AND 8, 1985 (R. SMITH, IE)

- WITH REACTOR AT 75% POWER REACTOR TRIP OCCURRED ON LOW SG LEVEL (BOTH EVENTS).
- IN BOTH EVENTS THE MFW SYSTEM BECAME INOPERABLE; THE TURBINE DRIVEN AFW PUMP TRIPPED ON OVERSPEED; ONE OF THE TWO MOTOR-DRIVEN AFW PUMPS FAILED TO START ON THE AUTOMATIC SIGNAL AND ITS DISCHARGE VALVE DID NOT OPEN ON COMMAND WHEN THIS PUMP WAS MANUALLY STARTED; SG #1 WAS WITHOUT FEED FOR 15 MINUTES.
- THE FAILURES IN THE MFW SYSTEM, AFW SYSTEM, AND OTHER SAFETY RELATED DEVICES WERE DUE TO THE FAILURE OF A SINGLE INVERTER.
- SAFETY SIGNIFICANCE - UNAVAILABILITY OF SECOND MOTOR DRIVEN AFW PUMP WOULD HAVE RESULTED IN AN INADEQUATE CORE COOLING SITUATION.
- CORRECTIVE ACTIONS - INVERTER REPAIRED AND TESTED. OPERATOR KEPT READY TO MAKE TRANSFER TO ALTERNATE ELECTRICAL SUPPLY. DESIGN MODIFICATIONS AND EQUIPMENT IMPROVEMENTS STUDIED. TECH SPEC MODIFICATIONS. REACTOR OPERATOR TRAINING ON THIS EVENT.
- IE INFORMATION NOTICE CONSIDERED. WESTINGHOUSE CONTACTED.



SALEM -2: REACTOR TRIP
AUGUST 8, 1985 (J.T. BEARD)

SEQUENCE:

- PLANT AT 100%; TESTING OF SOLID STATE PROTECTION SYSTEM (SSPS) TRAIN "B" BEING COMPLETED.
- Rx, TRIP BREAKER "A" OPENED SPURIOUSLY - PLANT, TRIP, AFW "A" (ELEC.) AUTO - STARTED; FED, TWO S/Gs. AFW "B" (ELEC.) NO AUTO START, TURBINE AFW AUTO-STARTED; APPARENTLY NO FLOW.
- OPERATOR STARTED AFW "B"; FED OTHER 2 S/Gs.
- TURBINE BYPASS TO CONDENSER FLOW HIGH, OPERATOR CLOSED ALL MSIVs TO LIMIT COOLDOWN RATE (USE ATMOSPHERIC DUMPS).
- ATMOSPHERIC DUMPS MALFUNCTIONED; STEAM SAFETY LIFTED AT 1090 PSI.
- OPERATOR TOOK MANUAL CONTROL OF ATMOSPHERIC DUMPS.

CAUSES:

- RTB "A": FOUND LOOSE LEAD.
- AFW "B" AUTO-START BLOCKED DUE TO SSPS "B" TESTING.
- TURBINE AFW: NO FLOW AT 18 SEC.; RESPONSE TIME NOMINAL 56 SEC. - OPERATOR TRAINING; TURBINE SPEED SET TO 49% (?).
- TURBINE BYPASS FLOW: LONG STANDING PROBLEM.
- ATMOSPHERIC DUMP VALVES:
2 - KNOWN CONTROL PROBLEMS
2 - SUSPECT CONTROLLER OVERLOAD PROBLEMS

MAINE YANKEE: COMMON-MODE PROBLEM WITH STEAM GENERATOR
PRESSURE INSTRUMENTATION,
AUGUST 7, 1985 (J.T. BEARD)

- PLANT STEADY AT 78% POWER (END OF CYCLE).
- SPIKING PROBLEM ON S/G #1 PRESSURE CHANNEL "D"; FOUND ROOT VALVE "NOT FULLY OPEN".
- FOUND TOTAL OF 9 (OUT OF 12) ROOT VALVES "NOT FULLY OPEN." (3 CLOSED; 6 PARTIALLY OPEN) INPUTS TO: RX TRIP ON LOW S/G PRESSURE, FEEDWATER TRIP SYSTEM, EXC. FLOW CHECK VALVES.
- CONDITION MAY HAVE EXISTED SINCE LAST REFUELING (15 MONTHS).
- LICENSEE STATES ALL ACCESSIBLE RPS, ESFAS ROOT VALVES HAVE BEEN VERIFIED (AUG. 7, 1985).
- PLANT CONTINUES AT 78% POWER; REGION CONCURS.
- POTENTIAL ABNORMAL OCCURRENCE; ORAB, REGION, SRI FOLLOWING UP; TAMPERING NOT SUSPECTED; ADMIN. CONTROLS TO BE UPGRADED.

OCCONEE 1 - NEW GE UNDERVOLTAGE TRIP ATTACHMENT RESPONDS
SLOW, JULY 22, 1985 (H. NICOLARAS)

- UNIT 1 AT 100% POWER, UNDERVOLTAGE TRIP ATTACHMENT (UVTA) OF GE REACTOR TRIP BREAKER RESPONDED SLOW DURING SURVEILLANCE TESTING.
- UVTA TRIPPED IN 1738 MSEC VS. 80 MSEC REQUIREMENT. (40 MSEC, NOMINAL)
- SIMILAR EVENT OCCURRED AT OCCONEE 1 ON APRIL 30, 1985. (1530 MSEC RESPONSE TIME). (PAINT CHIPS)
- REACTOR TRIP BREAKER (RTB) HAD PASSED THE 13 POINT TEST (PERFORMED BY DUKE POWER COMPANY) FOR NUCLEAR SAFETY GRADE CERTIFICATION.
- ORIGINALLY DUKE STATED THAT SMALLER TOLERANCES BETWEEN THE ARMATURE AND MOUNTING NUTS COULD BE CAUSE OF DELAYED TRIPPING.
- LICENSEE CORRECTIVE ACTION - DUKE HAS PUT THE INTERNALS OF THE NEW UVTA INTO OLD HOUSING. DEVICE IS BACK IN-SERVICE ON LINE. FAILURE MECHANISM MAY NEVER BE KNOWN-ALL EVIDENCE LOST.
- NRC FOLLOWUP ACTION - STAFF HAS CONTACTED GE, B&W AND DUKE POWER TO DETERMINE CAUSE FOR DELAYED TRIPPING.
 - STAFF IS PURSUING ANY SIMILARITIES WITH THE RECENT RANCHO SECO RTB FAILURE (6/12/85 EVENTS BRIEFING) AND CALVERT CLIFFS EVENT.

INJECTION RECIRCULATION

DEFICIENCY

M. CARUSO, NRR)

CONTROL CIRCUITRY FOR EITHER
ON LINE ISOLATION VALVE
IN OVERHEATING AND DAMAGE TO

ALSO FAILS CONTROL ROOM
B SHUT". (VALVE SHUT,

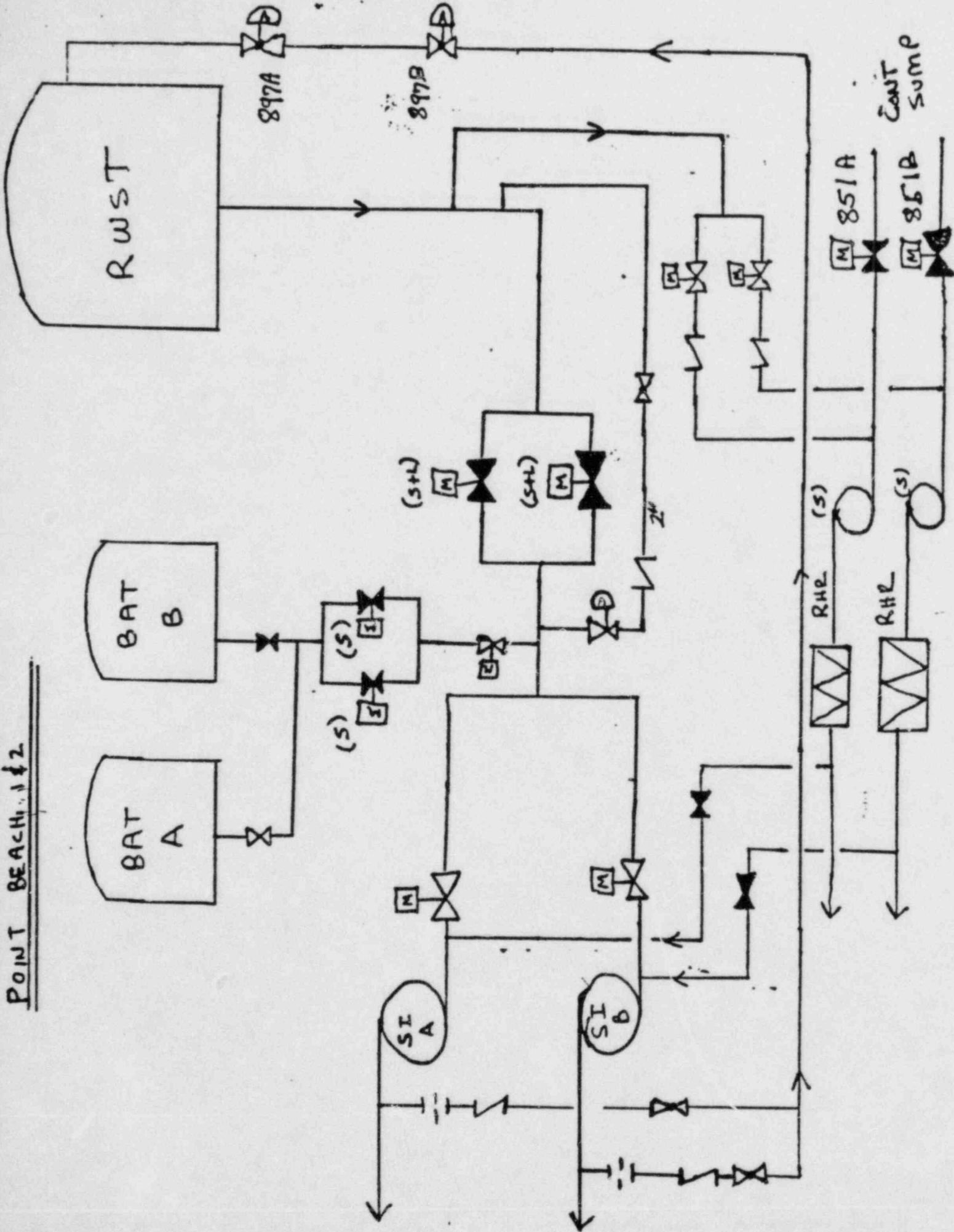
SPURIOUS SI SIGNALS AND SMALL
PRESSURE IS MAINTAINED ABOVE SI
DSE REQUIRING MINI-FLOW RECIRC)
OP REVIEW AND VERIFICATION
CTED TO PROVIDE SHORT-TERM FIX
S MANUALLY LOCKED OPEN
INTERLOCK WITH CONTAINMENT SUMP
51-A & B)

FOR SUMP ISOLATION REMOTE AND

OPERATORS TRAINED ON MANUAL
CIRC FOLLOWING LOCA
OF DESIGN DEFICIENCY (LICENSEE

ING CONSIDERED, SCHEDULED TO BE

LICENSEE; PROBLEM MAY BE GENERIC TO
P PLANTS



OTHER EVENTS OF INTEREST

ROBINSON, HATCH 1, AND CALVERT CLIFFS

MSIV PROBLEMS (W. SWENSON, NRR)

- ROBINSON - N2 ACCUMULATORS TOO SMALL TO ASSURE CLOSURE OF MSIVs UNDER LOW STEAM FLOW CONDITIONS
- PROBLEM DISCOVERED THROUGH ANALYSIS AND SPECIAL TEST
 - SAME PROBLEM AS TURKEY POINT
 - INTERIM FIX: USE INSTRUMENT AIR AND REDUNDANT N2 BOTTLES TO BACK UP ACCUMULATORS.

- HATCH - 1 - REACTOR SCRAMMED FROM 100% POWER ON 7/24
- MSIV VALVE DISC DROPPED TO CLOSED POSITION
 - CAUSE: BROKEN VALVE STEM DUE TO FATIGUE FAILURE
 - LICENSEE BELIEVES DISC WAS IN FLOW STREAM

CALVERT CLIFFS

- MSIV FAILED TO CLOSE FULLY DURING SHUTDOWN ON 7/24
- CAUSE: ACCUMULATION OF N2 IN HYDRAULIC SYSTEM
- ROOT CAUSE: INADEQUATE BLEEDOFF OF N2 AFTER RECENT RUPTURE OF N2 ACCUMULATOR BLADDER

OYSTER CREEK - DELAMINATION OF EMERGENCY
SERVICE WATER SYSTEM (ESWS) PIPE COATING

JULY 22, 1985 (J. DONOHEW, NRR)

- PROBLEM: PORTIONS (1%) OF COMMERCIAL BITUMASTIC COAL TAR EPOXY COATING USED TO PROTECT PIPE FROM OCEAN WATER SEPARATED FROM ESWS INNER PIPE WALL AND DEPOSITED IN CONTAINMENT SPRAY SYSTEM (CSS) HEAT EXCHANGERS (HX).
- SAFETY SIGNIFICANCE: DEGRADATION OF CONTAINMENT HEAT REMOVAL IN AN ACCIDENT FROM BLOCKAGE OF CSS HX (ESWS SIDE) BY PARTICLES OF COATING.
- PROBLEM FOUND BY LICENSEE AFTER OPENING LOOP #2 HX TO DETERMINE CAUSE OF LOW ESWS PUMP DISCHARGE PRESSURE FOLLOWED BY DROP IN HX DIFFERENTIAL PRESSURE. TEST OF HX DIFFERENTIAL PRESSURE AND PUMPS IS PART OF MONTHLY SURVEILLANCE ON CSS BEING OPERABLE. LICENSEE SUSPECTED GENERIC PROBLEM ON BOTH LOOPS BECAUSE OF HIGH DIFFERENTIAL ON LOOP #1 HX AND DECIDED TO SHUTDOWN.
- LICENSEE BELIEVES IT IS CRACKED PIPE COATING COMING OFF PIPE WHERE INTAKE OCEAN WATER IS NOT CHLORINATED. CRACKING BELIEVED DUE TO PIPE ONCE DRY AND EXPOSED TO SUNLIGHT, HEATING UP AND COOLING DOWN. PROBLEM MAY HAVE EXISTED SINCE CONSTRUCTION. TURBINE SERVICE WATER PIPING HAS THIS COATING BUT DOES NOT SHOW THIS PROBLEM.
- CORRECTIVE ACTION: LICENSEE RAN TV PROBE THROUGH 33% OF PIPING NEAR INTAKE. FOUND PLACES WHERE COATING HAD SEPARATED HYDROLAZED PIPING TO REMOVE COATING BEYOND CHLORINATION POINT

WHERE THEY EXPECTED POSSIBLE FURTHER DELAMINATION (3%).
FLUSHED PIPING WITH SCREEN IN HX BY TWO RUNS;
CLEANED OFF SCREENS. REMOVED SCREENS AND RAN SYSTEM AND
DECLARED SYSTEM OPERABLE. REGION I AGREED WITH LICENSEE.

- REGION I PLANNING AN INFORMATION NOTICE AND NRR HAS
REQUESTED A LETTER FROM LICENSEE DESCRIBING THE PROBLEM AND
ITS LONG TERM CORRECTIVE ACTION.

BRUNSWICK 1 ESF ACTUATION/REACTOR BUILDING FLOODING
JULY 31, 1985 (M. GROTENHUIS)

- STATUS: PLANT SHUT DOWN 3/31/85 FOR 37 WEEK OUTAGE - DEFUELED.
- INADVERTANT ESF ACTUATION/CORE SPRAY SYSTEMS (CSS)
- SPURIOUS LOCA SIGNAL - VENTING/FILLING TO CHECK TRANSMITTER FOR WIDE RANGE WATER LEVEL INSTRUMENT.
 1. 3 DG STARTED - 1 DOWN FOR MAINTENANCE
 2. GROUP 1 ISOLATION
 3. AUTO SIGNAL TO CSS
 4. SMOKE EMITTED FROM PANEL
 5. FUEL POOL HIGH LEVEL ALARM
 6. HP REPORTS FUEL POOL LEVEL AT VENTS
- CORRECTIVE ACTIONS (PRELIMINARY)
 1. PLANT MOD PROCEDURE TO BE REVISED (RE: CLEARANCE TAGS)
 2. INVESTIGATE WHY AC RELAY WAS INSTALLED IN DC LOCATION
 3. INVESTIGATE WHY DEFEATING AUTO INITIATIONS FEATURE OF OF LOW PRESSURE ECCS DURING REFUELING
 4. ENSURE WORK ON LOW PRESSURE INJECTION SYSTEM IS PROPERLY SCHEDULED
- GENERIC IMPLICATION - 3 ABOVE
- NRC FOLLOWUP BY RESIDENT INSPECTOR

ST. LUCIE UNIT -2 - REACTOR TRIP AND A SIAS
AUGUST 8, 1985 (D. SELLS AND T. ROTELLA, NRR)

INITIAL CONDITIONS: 99% POWER STEADY STATE

<u>DATE:</u>	<u>TIME:</u>	
8/8/85	02:06	- REACTOR TRIP, POWER FAILURE "A" TRAIN SAFEGUARDS SYSTEM
		- HPSI & LPSI PUMPS STARTED, NO INJECTION OCCURRED BECAUSE RCS PRESSURE ABOVE DISCHARGE PRESSURE
		- ALL SAFETY SYSTEMS RESPONDED NORMALLY
		- RCP's MANUALLY TRIPPED (BY PROCEDURE)
		- CCW FLOW TO RCP'S ISOLATES ON SIAS
8/8/85	02:14	- "B" TRAIN SIAS RESET; CCW UNISOLATED 2 OF 4 RCP's RESTARTED
8/8/85	03:10	- UNUSUAL EVENT DECLARED
8/8/85	06:31	- UNUSUAL EVENT TERMINATED
<u>CAUSE OF EVENT:</u>		- TWO BLOWN FUSES IN "A" SAFEGUARDS CABINET (BACKUP FUSE FOUND TO BE UNDERSIZED)
<u>FACILITY DAMAGE:</u>		- RCP SEAL DAMAGE ON 2 RCP's DUE TO NO COOLING FOR 3 HOURS
<u>CURRENT CONDITION:</u>		- COLD SHUTDOWN; REPLACING RCP SEALS
<u>SAFETY SIGNIFICANCE:</u>		- POTENTIAL FOR RCP PRESSURE BOUNDARY DEGRADATION

(CONTINUED)

ST. LUCIE UNIT - 2 - REACTOR TRIP AND A SIAS
AUGUST 8, 1985 (D. SELLS AND T. ROTELLA, NRR)

CORRECTIVE ACTION: - POWER FOR CCW VALVES (ON RCP'S) PLACED
ON 1E VITAL BUS; NOT SHED ON SIAS

VERMONT YANKEE - RADIATION EXPOSURE

AUGUST 8, 1985 (R. HERMAN)

- HP TECHNICIAN POTENTIALLY OVER EXPOSED DURING SURVEY IN THE TIP ROOM (8/8/85)
- HP TECH MEASURED 1000 REM/HR FIELD WITH TELETSTOR AT TIP ROOM DOOR ENTRANCE. ENTERED ROOM AND REMAINED APPROXIMATELY 2 MINUTES. AUX. OPERATOR WITH HP MEASURED 200 REM/HR AT DOOR ENTRANCE WITH PIC-6 INSTRUMENT.
- AUX OPERATOR, WHO STOOD BEHIND WALL OUTSIDE ROOM RECEIVED 260 MILLI-REM BASED ON POCKET DOSIMETER READING
- HP TECH 0-500 MILLI-REM POCKET DOSIMETER OFF-SCALE. TLD RESULTS INDICATE THAT MAX. WHOLE BODY EXPOSURE FOR HP TECH 1.29 REM.
- LICENSEE HAS RE-ENACTED EVENT TWICE. BELIEVES EXPOSURE MEASURED BY TLD REPRESENTATIVE OF DOSE RECEIVED. CONTROLS FOR ENTRANCE TO TIP ROM FURTHER TIGHTENED BY LICENSEE (AS OF 8/12/85).

UNPLANNED REACTOR TRIPS*

- AVERAGE WEEKLY TRIP FREQUENCY FOR PAST 2½ WEEKS IS APPROXIMATELY 10 TRIPS/WEEK, WHICH IS NEAR AVERAGE
- BREAKDOWN OF REPORTED CAUSES

AUTOMATIC

- EQUIPMENT FAILURES 50%
- PERSONNEL ACTIVITIES 46%

MANUAL 4%

*BASED ON 10 CFR 50.72 REPORTS FOR PLANTS WITH LICENSES FOR FULL POWER OPERATION

OPERATING REACTORS' EVENTS MEETING FOLLOWUP ITEMS
AS OF MEETING 85-13 ON AUGUST 13, 1985

(IN ASCENDING MEETING DATE, NSSS VENDOR, FACILITY ORDER)

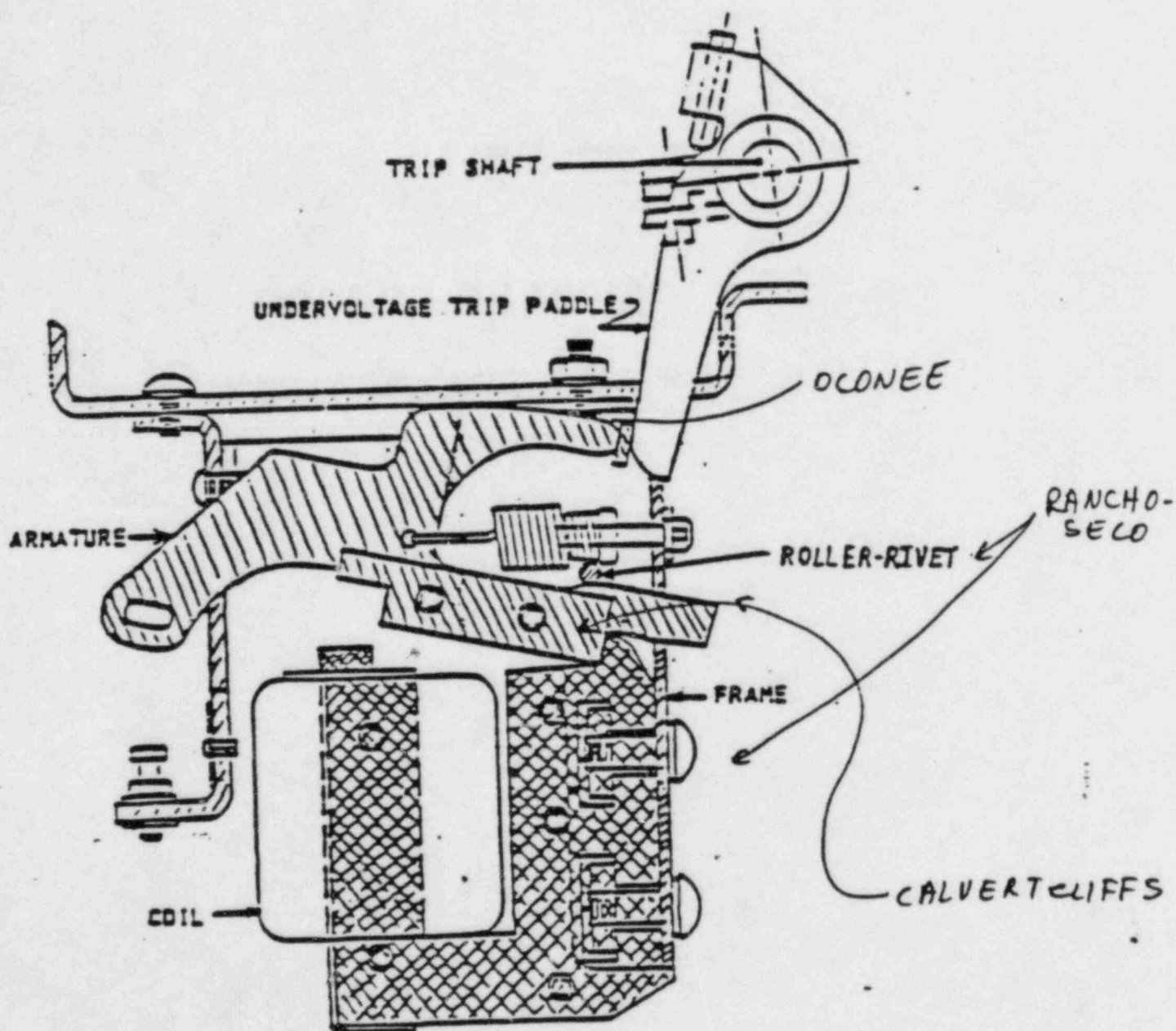
MEETING NUMBER/ MEETING DATE	FACILITY NSSS VENDOR/ EVENT DESCRIP.	RESPONSIBLE DIVISION/ INDIVIDUAL	TASK DESCRIPTION	SCHEDULE COMPLET. DATE(S)	CLOSED DATE BY DOCUMENT, MEETING, ETC.	COMMENTS
85-10 06/12/85	DAVIS BESSE 1 BW / LOSS OF ALL MAIN AND AUX. FEEDWATER 6/9/85	DST /SPEIS, T. DL /DEAGAZIO, A.	DETERMINE STATUS OF IMPLEMENTATION OF TMI ITEMS, GENERIC ISSUES, MFAs AT DAVIS BESSE THAT MAY BE RELATED TO 6/9/85 EVENT.	08/30/85 06/19/85 / /	CLOSED 07/17/85 TMI ISSUES CLOSED- THOMPSON->DENTO N MEMO 6/20/85. ALSO SEE RESPONSE TO CONS. MARKEY	
85-11 07/01/85	RANCHO SECO 1 BW / RCS HIGH POINT VENT LEAK, 6/23/85	DL /MINER, S. /	DETERMINE STATUS OF IEB 79-14.	08/30/85 / / / /	OPEN / /	THE LICENSEE IS COMPLETING THE INSPECTION
85-11 07/01/85	RANCHO SECO 1 BW / STARTUP PROBLEMS- JUNE 1985	DL /MINER, S. /	SCHEDULE CONFERENCE CALL WITH REGION AND LICENSEE PRIOR TO RESTART TO DETERMINE PLANT READINESS FOR OPERATIONS.	08/15/85 07/12/85 / /	OPEN / /	EVALUATION IN PROGRESS
85-11 07/01/85	LASALLE 2 GE / EQ MODIFICATION PROBLEMS AND LOSS OF ALL ECCS JUNE 5-10, 1985	IE /BAER, R. /	CONSIDER ISSUANCE OF IE NOTICE.	08/30/85 / / / /	OPEN / /	
85-11 07/01/85	DYSTER CREEK 1 GE / UNCONTROLLED LEAKAGE OF REACTOR COOLANT OUTSIDE CONTAINMENT 6/12/85	DHFS/BOOHER, W. /	DETERMINE EFFICACY OF EPG/ OPERATOR ACTION AND EXCESSIVE RESPONSE TIME.	08/30/85 / / / /	OPEN / /	
85-11 07/01/85	DYSTER CREEK 1 GE / UNCONTROLLED LEAKAGE OF REACTOR COOLANT OUTSIDE CONTAINMENT 6/12/85	DST /MINNERS LEAD DE /CHERNY ASST.	PRESSURE ISOLATION VALVE TESTING REQUIREMENT TO BE ADDRESSED IN CR6R BRIEFING.	08/30/85 / / / /	CLOSED 07/24/85 MEETING W/CR6R- DYSTER CREEK EVENT TO BE CONSIDERED IN DEV. OF TESTING REQUIREMENTS FOR OP. PLANTS	MEETING WITH CR6R TOOK PLACE 7/24/85
85-12 07/23/85	ODONEE 2 BW / EXTENDED BLOWDOWN FROM MAIN STEAM	DL /NICOLARIS, H /	SCHEDULE CONFERENCE CALL WITH LICENSEE TO DISCUSS CROSBY VALVE PERFORMANCE	09/30/85 / / / /	CLOSED 08/12/85 CONFERENCE CALL BETWEEN LICENSEE, PH.	

ENCLOSURE 3

OPERATING REACTORS' EVENTS MEETING FOLLOWUP ITEMS AS OF MEETING 85-13 ON AUGUST 13, 1985

(IN ASCENDING MEETING DATE, MSSS VENDOR, FACILITY ORDER)

MEETING NUMBER/ MEETING DATE	FACILITY MSSS VENDOR/ EVENT DESCRIP.	RESPONSIBLE DIVISION/ INDIVIDUAL	TASK DESCRIPTION	SCHEDULE COMPLET. DATE(S)	CLOSED DATE BY DOCUMENT, MEETING, ETC.	COMMENTS
04/10/84	RANCHO SECO 1 BW / MAIN GEN HYDROGEN EXPLOSION - PARTIAL LOSS OF MNI 3/19/84	ICSB/ROSA, F. /	SUMMARIZE B&W LIC. RESPONSES TO QUESTIONS SUBSEQUENT TO RANCHO SECO LOSS OF MNI EVENT AND PRESENT AT FOLLOW-UP DR EVENTS BRIEFING	08/30/85 07/30/85 / /	OPEN / /	STAFF REVIEW OF B&W OWNERS GROUP SUBMITTAL OF 1/11/85 IS IN PROGRESS (THIS REACTIVATED- CRYS.RIV. 3)
06/07/84	SALEM 2 M / STUCK OPEN RELIEF VALVE/ ECCS ACTUATION JULY 25, 1984	DL /FISCHER, D. /	DETERMINE IF VELAN (PORV) BLOCK VALVE QUALIFIED TO CLOSE AGAINST 7/25/84 STEAM BLOWDOWN TRANSIENT AT SALEM 2. CHECK EPRI TEST PROGRAM RESULTS.	08/30/85 07/30/85 / /	CLOSED 07/25/85 NEB REVIEWED AEDD REPORT OF 7/25/85	BLOCK VALVE IS ACCEPTABLE
01/03/85	CRYSTAL RIVER 3 BW / TEMP. LOSS OF MNI 12/28/84	ICSB/ROSA, F. /	CONSIDER NEED FOR ADDITIONAL REQUIREMENTS ON ALARMS / ANNUNCIATORS	09/30/85 07/30/85 / /	OPEN / /	ICSB IS CONSIDERING OCONEE 1 LOSS OF ANNUNCIATOR. (4/25/84) IN ANAL. OF REQUIREMENTS.
05/07/85	HILLSTONE 2 CE / EDDY CURRENT TEST OF STEAM GEN. TUBES, 4/10/85	ORAB/MURPHY, E. DE /CONRAD, W.	REVIEW S606 LETTER ON EDDY CURRENT TESTING ISSUE, IN VIEW OF HILLSTONE 2 FINDINGS.	10/01/85 08/01/85 08/07/85	OPEN / /	ORNL CONTRACTED TO EVALUATE EFFECT OF COPPER ON EDDY CURRENT TESTING
05/07/85	CATAMBA 2 M / BOTH RHR TRAINS OVERPRESSURIZED 4/19/85	DL /JABBOUR, K. /	FOLLOW UP BRIEFING AFTER EVAL. OF OVERPRESS. EFFECTS ON VARIOUS SYSTEMS AND CORRECTIVE ACTIONS.	09/30/85 06/01/85 08/07/85	OPEN / /	PRELIM. REPORT REC'D. ADD'L INFO. REQUESTED FROM LICENSEE. RESOLUTION PENDING REVIEW BY NRC & RII.
85-12 05/30/85	HATCH 1 GE / STUCK OPEN SAFETY RELIEF VALVE	ORAB/CARUSO, M. /	WILL DEVELOP TIA TO COORDINATE IE NOTICE AND FURTHER INVESTIGATIVE EFFORTS.	07/30/85 / / / /	CLOSED 07/23/85 TIA IN CONCURRENCE	
85-10 06/12/85	DAVIS BESSE 1 BW / LOSS OF ALL MAIN AND AUX. FEEDWATER 6/9/85	DSI /PARR, D. DL /DEAGAZIO, A.	RE-EXAMINE STAFF REVIEW OF ACCEPTABILITY/ DIVERSITY OF DAVIS BESSE AFM SYSTEM.	08/30/85 06/11/85 / /	OPEN / /	IIIT REPORT UNDER REVIEW
85-10 06/12/85	DAVIS BESSE 1 BW / LOSS OF ALL MAIN AND AUX. FEEDWATER 6/9/85	DL /DEAGAZIO, A. /	PROVIDE M. DENTON WITH 1) COMPARISON BETWEEN DAVIS BESSE 1 AND TMI-1 OF TMI ACTION PLAN IMPLEMENTATION STATUS 2) COMPARISON OF MFM AND AFM SYSTEMS AT DAVIS BESSE 1 & TMI-1 3) STATUS OF STARTUP FM BUNK	09/30/85 08/30/85 06/19/85	OPEN / / ITEM 1-6/20/85 MEMO M. THOMPSON TO M. DENTON PROVIDED UPDATE TO NUREG 1066	ITEMS 2 & 3 IN PROGRESS.



UNDervOLTAGE TRIP DEVICE
COIL DE-ENERGIZED

OPERATING REACTORS' EVENTS MEETING FOLLOWUP ITEMS
AS OF MEETING B5-13 ON AUGUST 13, 1985

(IN ASCENDING MEETING DATE, NSSS VENDOR, FACILITY ORDER)

MEETING NUMBER MEETING DATE	FACILITY APPS VENDOR/ EVENT DESCRIP.	RESPONSIBLE DIVISION/ INDIVIDUAL	TASK DESCRIPTION	SCHEDULE COMPLET. DATE(S)	CLOSED DATE BY DOCUMENT, MEETING, ETC.	COMMENTS
B5-12 07/23/85	SEABROOK M / CROSBY MAIN STEAM SAFETY VALVE FLOW DEFICIENCY 12/84	DSI /MARSH /	ANALYZE SAFETY IMPLICATIONS OF VALVE FLOW DEFICIENCY	09/30/85 / / / /	OPEN / /	
B5-12 07/23/85	SEABROOK M / CROSBY MAIN STEAM SAFETY VALVE FLOW DEFICIENCY 12/84	DE /CHERNEY /	INVESTIGATE ADEQUACY OF TESTING AND VALIDITY OF EXTRAPOLATING DATA FROM SMALL TO LARGE VALVES	09/30/85 / / / /	OPEN / /	
B5-13 08/13/85	CALVERT CLIFFS CE / REACTOR TRIP BREAKER PROBLEM	AEOD/LANNING, W /	DETERMINE IF RECENT GE AK-2-25 TRIP BREAKER PROBLEMS REPORTED VIA WPRDS	09/13/85 / / / /	OPEN / /	
B5-13 08/13/85	FOREIGN NA / MULTIPLE FEEDWATER FAILURES	IE /ROSSI, E. /	CONSIDER ISSUANCE OF IE INFORMATION NOTICE.	09/03/85 / / / /	OPEN / /	
B5-13 08/13/85	POINT BEACH M / SAFETY INJECTION MINI-FLOW RECIRC DESIGN DEFICIENCY	IE /LONS, S. ORAB/CARUSO, M.	DRAFT INFORMATION NOTICE ON PT. BEACH EVENT. CONSIDER TEMP. INSTRUCTION FOR RES. INSPECTOR REGARDING COMPLIANCE WITH APP. K	09/13/85 / / / /	OPEN / /	
B5-13 08/13/85	TURKEY POINT 3 M / POST-TRIP LOSS OF AFM ON 7/21/85	DL /MCDONALD, D. /	HAVE LICENSEE INCORPORATE USE OF MOTOR DRIVEN AFM PUMPS IN EMERGENCY PROCEDURES	10/13/85 / / / /	OPEN / /	
B5-13 08/13/85	TURKEY POINT 3 M / POST-TRIP LOSS OF AFM	DSI /PARR, D. /	REVIEW ADEQUACY OF GOVERNOR DESIGN ON TURBINE DRIVEN AFM PUMPS	10/13/85 / / / /	OPEN / /	