

MANUFACTURERS OF
LUMINOUS DIALS
NEUTRON SOURCES
RADIATION SOURCES
RADIOACTIVE SPECIALTIES
RADIOACTIVE LIGHT SOURCES

NAME PLATES
ETCHED AND LITHOGRAPHED
LUMINOUS COMPOUNDS

"IONOTRON"
STATIC ELIMINATORS

"RADELIN"
X-RAY SCREENS
TELEVISION PHOSPHORS

"LACKON" PANELS

"NELECON"
LUMINESCENT PIGMENTS

TELEPHONE JEFFERSON 9-4000

UNITED STATES RADIUM CORPORATION

P. O. Box 246

MORRISTOWN, NEW JERSEY

5285

PLANTS AND LABORATORIES
BLOOMSBURG, PA.
BERNARDSVILLE, N. J.
WHIPPANY, N. J.
NO. HOLLYWOOD, CALIF.

EUROPEAN SUBSIDIARY
UNITED STATES RADIUM
CORPORATION EUROPE
GENEVA, SWITZERLAND

CANADIAN SUBSIDIARY
RADELIN LTD. TORONTO

CABLE ADDRESS
RADELIN-MORRISTOWN, N. J.

September 30, 1960

Mr. Robert E. Brinkman
Senior Licensing Reviewer
Isotopes Branch
Division of Licensing and Regulation
U. S. Atomic Energy Commission
Washington 25, D. C.

Your Reference:
L&R:IB:JMB (27929)

Dear Mr. Brinkman:

The enclosed USRC drawing, Lab. 345, should provide the information requested in your letter to Mr. G. Derickson, Chief Engineer, Snell Oil Company.

The number to which you refer is a drawing detailing component parts. The attached drawing describes the assembly and labeling of the source and should be sufficient information for you to complete your review of the subject application.

Very truly yours,

UNITED STATES RADIUM CORPORATION

H. H. Dooley

H. H. Dooley
Assistant to Vice President - Sales

HHD/eo



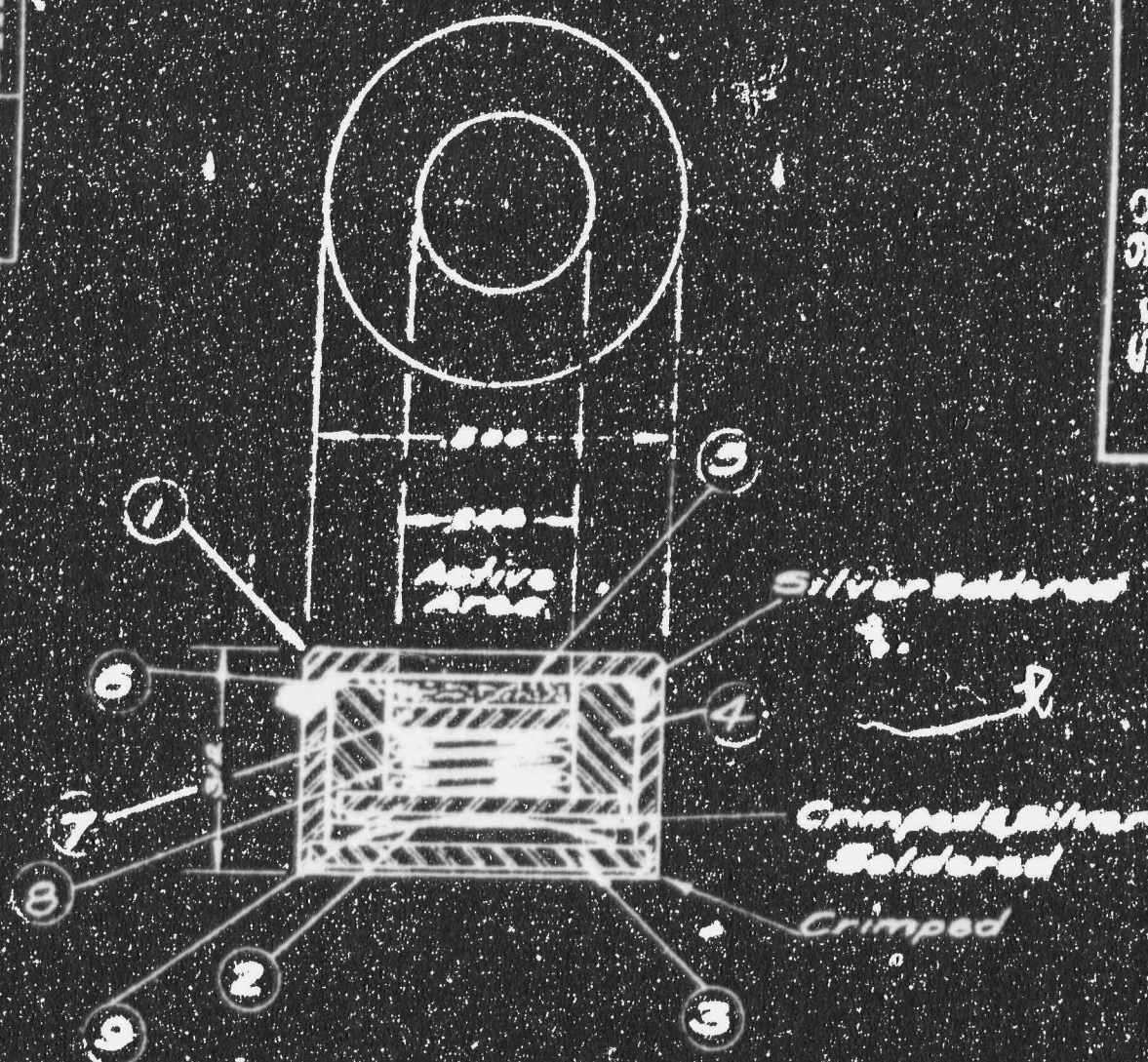
DUPLICATED
FOR DIV. OF INSP

LAB-345

U
2
5
0
7
A
T
M
O

UNITED STATES RADIO CORP.
STATION WJLA-TV
WASHINGTON, D.C.

DATE: 2-16-68	DATE: 2-16-68
APPRO'D	APPRO'D
SCALE	SCALE
CHECK BY	CHECK BY



MATERIAL

1. Monol Outside Housing
2. 500 Steel Spring
3. Monol Back Plate
4. Monol Inside Housing
5. 502 Monol Window
6. Active Pallet
7. Filler Plug - Monol
8. 500 Wire-Steel Spring
9. Monol Back Plate

Sales Operating Temp. for 1 Year

44-38861-310A

THE UNIVERSITY OF CHICAGO

STANDARD TOLERANCES

As a business life & wellness coach, I help business owners & entrepreneurs

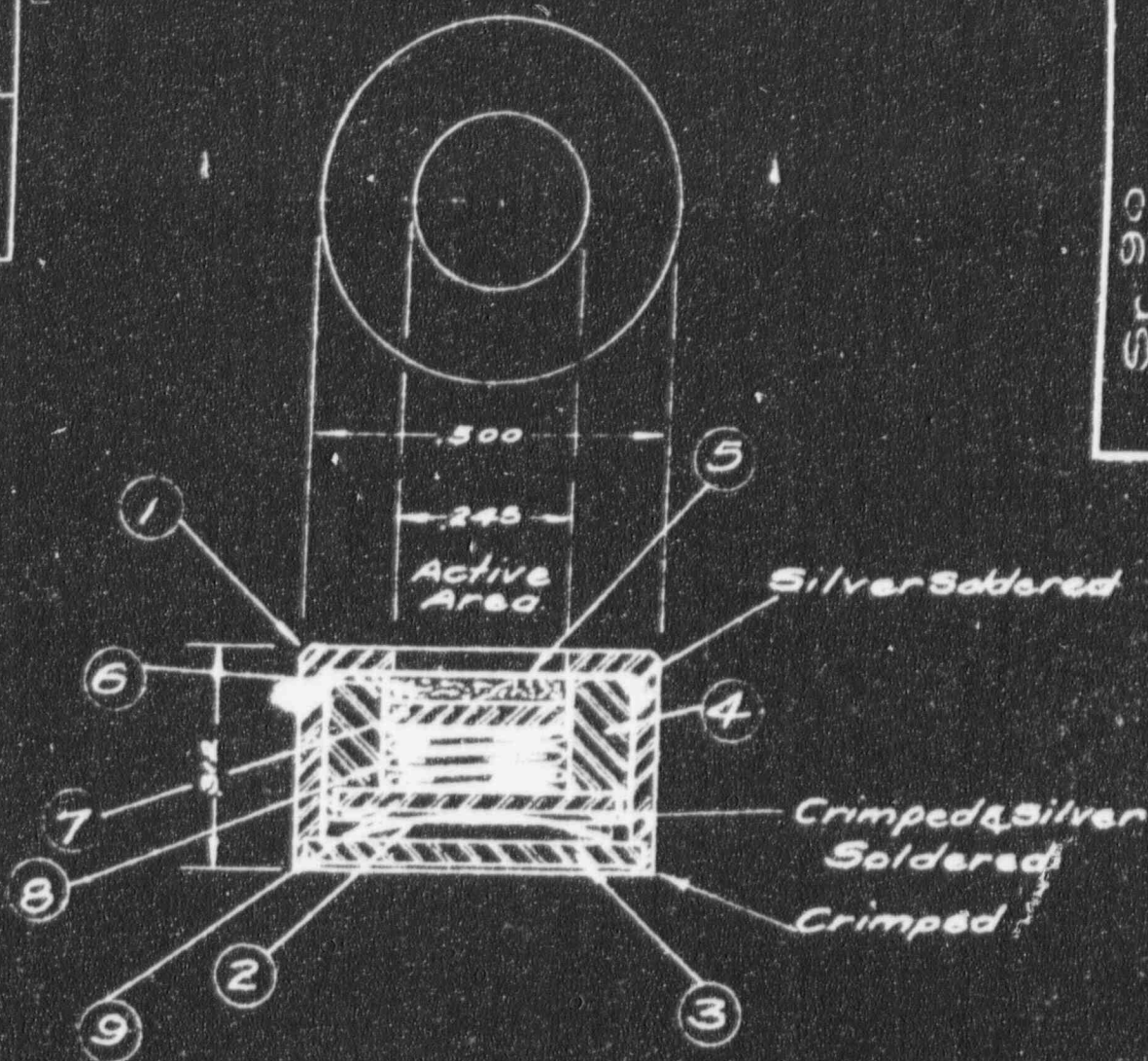
THE UNIVERSITY OF CHICAGO

LAB-345

BETA SOURCE

UNITED STATES RADIUM CORP.
BLOOMSBURG, PA.

DOWN BY:	APPRO:	DATE: 2-16-80
CHECK BY:	SCALE:	AMOUNT:



1. Monel Outside Housing
2. .008 Steel Spring
3. Name & Back Plate
4. Monel Inside Housing
5. .002 Monel Window
6. Active Pellet
7. Filler Plugs - Monel
8. .020 Wire-Steel Spring
9. Monel Back Plate

Safe operating Temp. 50° F (max)

U.S.R.C. Code No. I-110

STANDARD TOLERANCES UNLESS OTHERWISE SPECIFIED	REVISIONS	MATERIAL
ALL DIMENSIONS IN INCHES UNLESS OTHERWISE SPECIFIED	1	STAINLESS STEEL
DO NOT SCALE	2	ALUMINUM