



NUCLEAR ENERGY SERVICES, INC.

DOCUMENT NO.

80A4429

REV. 3

A UNIT OF QUALCORP

PAGE 1 OF 32

## PSI PROGRAM PLAN:

## REACTOR WATER CLEAN UP SYSTEM

## PERRY NUCLEAR POWER PLANT, UNIT 1

Prepared For

CLEVELAND ELECTRIC ILLUMINATING COMPANY

Project Application		Copy No	Assigned To		
5532					
APPROVALS					
TITLE / DEPT. - SIGNATURE - DATE					
REV NO	PREPARED BY	ISI Programs Engineering Mgr.	Project Manager	Q.A. Manager	
0					
1					
2	Susan Meyer 10/1/84	<i>[Signature]</i> 10/8/84	<i>[Signature]</i> 10/9/84	<i>[Signature]</i> 10-24-84	
3	<i>[Signature]</i> 3/20/85	<i>[Signature]</i> 3/21/85	<i>[Signature]</i> 3/24/85	<i>[Signature]</i> 3-21-85	
4					
5					
6					
7					
8					
9					
10					
1	8508120502 850807 PDR ADCK 05000440 Q PDR				

FORM 4

**CONTROLLED COPY**  
**VALID ONLY IF THIS STAMP IS RED**

[illegible]

## TABLE OF CONTENTS

	<u>Page</u>
1. INTRODUCTION	4
2. SYSTEM DESCRIPTION	4
2.1 Exemptions	4
2.2 Exceptions	4
2.3 Classifications	4
2.4 Calibration Standards	7
2.5 Isometric Figures and Sketches	7
3. PROGRAM PLAN AND SCHEDULE	8
System Classification Figures	9
Weld Map Figures	10
Component Figures	13
Schedule Sheets Piping Welds	15
Schedule Sheets Component Examinations	31



### Tables

2.1	System Exemptions	5
2.2	System Exceptions (provided later)--	6
2.3	System Classifications	7
2.4	System Referenced Calibration Standards	7
2.5	System Isometric Figures	7

## REACTOR WATER CLEAN UP SYSTEM

### 1. INTRODUCTION

This document has been prepared to (1) delineate system-specific, itemized Preservice Inspection (PSI) requirements and, (2) present appropriate diagrams locating the areas for examination. All components in the Reactor Water Clean Up (RWCU) System required to be examined by ASME BPV Code, Section XI, are included.

The General Reference Text, NES Document 80A4420 presents the development and required procedural information for the PSI Program Plan generic to all systems examined.

### 2. SYSTEM DESCRIPTION

#### 2.1 EXEMPTIONS

The portions of the RWCU System that are exempted from examination as allowed by ASME BPV Code Section XI, and as described in the General Reference Text, are presented in Table 2.1

#### 2.2 EXCEPTIONS

Exception may be taken to code requirements of examination where access is not possible due to design limitations. Provision for such exception is presented in the General Reference Text. Exceptions that are taken to required exams of the RWCU System are itemized in Table 2.2 (Later).

#### 2.3 CLASSIFICATIONS

This system's piping and instrumentation diagrams have been reviewed and Quality Group A, B, and C (ASME Code Class 1, 2, and 3) boundaries have been established as required by ASME Code Section XI, IWA-1400. The General Reference Text discusses the basis for these determinations.

Diagrams delineating these boundaries for the RWCU System are presented in Figure B-10. RWCU System classification and boundaries are presented in Table 2.3

TABLE 2.1  
SYSTEM EXEMPTIONS

<u>ASME Code Class</u>	<u>Description</u>	<u>Ref. P&amp;ID</u>	<u>Basis For Exemption</u>
1	1-1/2" Bypass Line for Valve F101	D-302-671-Rev D	All components less than 2.36" ID for water service are exempted per 'ASME' Section XI subparagraph IWB-1220(a), based on exclusion diameter for normal makeup.
1	2" DI-1 from 3" x 2" Reducer up to the Reactor Recirculation Intertie	D-302 671- Rev D	All components less than 2.36" ID for water service are exempted per 'ASME' Section XI subparagraph IWB-1220(a), based on exclusion diameter for normal makeup.
1	All pipings of 1 in. nominal size and smaller	D-302 671-Rev D	All component connections, pipings and associated valves of 1 in. nominal size and smaller are exempt per IWB-1220(b).
2	All pipings of 4 in. nominal size and smaller	D-302 672-Rev D	All component connections, pipings and associated valves that are 4 in. nominal size and smaller are exempt per IWB-1220(c).

TABLE 2.3  
SYSTEM CLASSIFICATIONS

ASME Code Class	Description	Ref. P&ID
1	6" DI-1 from Valve F004 through penetration P-131 including Valve F001 up to 6" x 4" reducer	D-302-671 Rev D
1	4" DI-1 from Valve F106 up to Valve F100 including Valve F102	D-302-671 Rev D
1	3" DI-1 from 6" x 3" Reducer to 3" x 2" Reducer including Valve F103	D-302-671 Rev D
2	6" DI-2 from Valve F040 through Penetration P-132 including Valves F051A, B and F052A, B up to the 12" RHR intertie.	D-302-671 Rev D



## 2.4 CALIBRATION STANDARDS

Table 2.4 lists the Calibration Standards for ultrasonic examinations scheduled for the RWCU System. All calibration standards are to be retained on site.

Design drawing documents are presented in Table 3.5 of the General Reference Text.(Later)

**TABLE 2.4**

### RWCU System: Referenced Calibration Standards

<u>Title</u>	<u>Line Class</u>	<u>Schedule</u>	<u>Material</u>
PY-4-80-CS	4" D1-1	Sch-80	SA106 Grade B
PY-4-XXI-CS-F	4" D1-1	Sch-80	SA234 Grade WPB
PY-6-80-CS	6" D1-1	Sch-80	SA106 Grade B
PY-6-120-CS	6" D1-2	Sch-120	SA106 Grade B
PY-6-XXI-CS-F	6" D1-2	Sch-120	SA234 Grade WPB
PY-Valve-XX2-CS	-	1.50"	SA 105
PY-Valve-XX3-CS	-	1.12"	SA 105



## 2.5 ISOMETRIC FIGURES AND SKETCHES

The piping isometric and component figures listed in Table 2.5 show the identification and location of areas for the RWCU System requiring examination. Sketches may also be included that illustrate or locate areas of components requiring identification for examination.

**TABLE 2.5**

### RWCU System Isometric/Component Figures

10-01	Revision 2
10-02	Revision 1
10-03	Revision 1
10-04	Revision 2
10-05	Revision 2

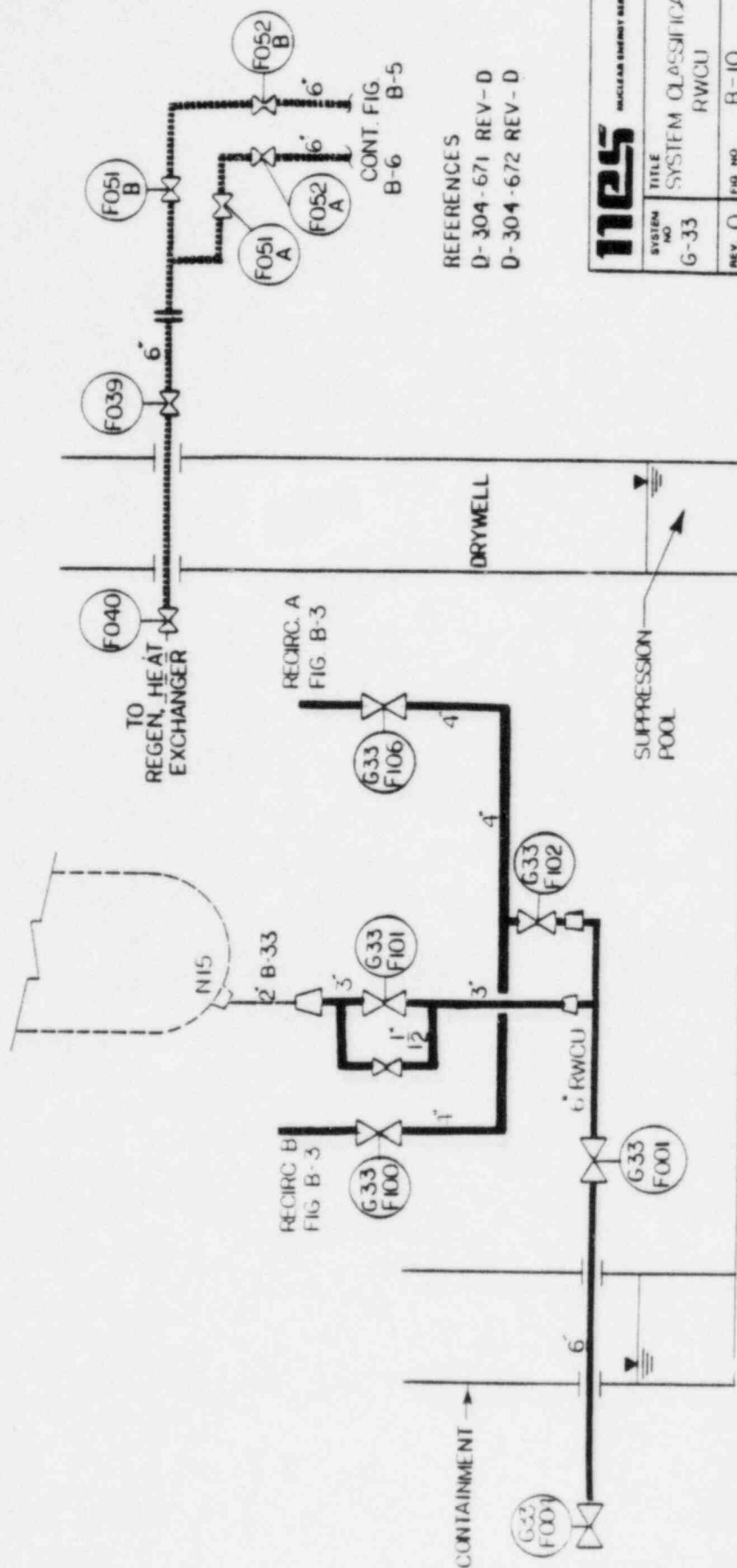


### 3. PROGRAM PLAN AND SCHEDULE

The specific PSI examination requirements are defined in the PSI Program Plan and its schedule tables. Each weld or other examination area is designated by a unique identification number, and then described. Also identified are applicable examination category, method, procedure number, any calibration standard number referenced for ultrasonic examination, and the zone in which the examination area is located, as described in Section 3 of the General Reference Text.

Examination items are first divided according to the weld or hanger isometric figure that they appear on. Multiple examination requirements of the same component are listed separate in the schedule tables. Component examinations or component bolting follow the piping weld examinations for each system. Hanger examinations appear as the next section, followed by the hydrovisual examination requirements.




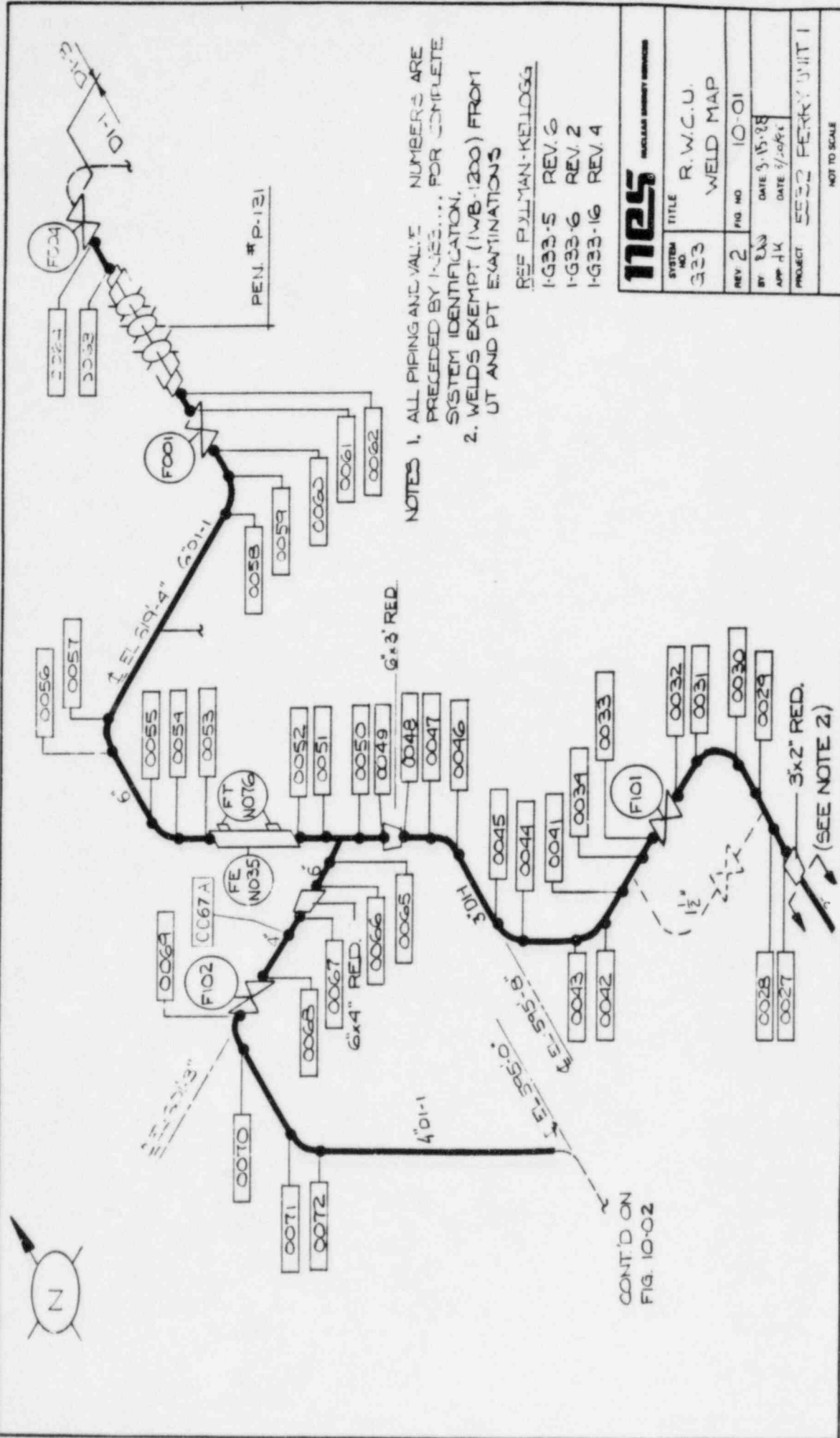


## REFERENCES

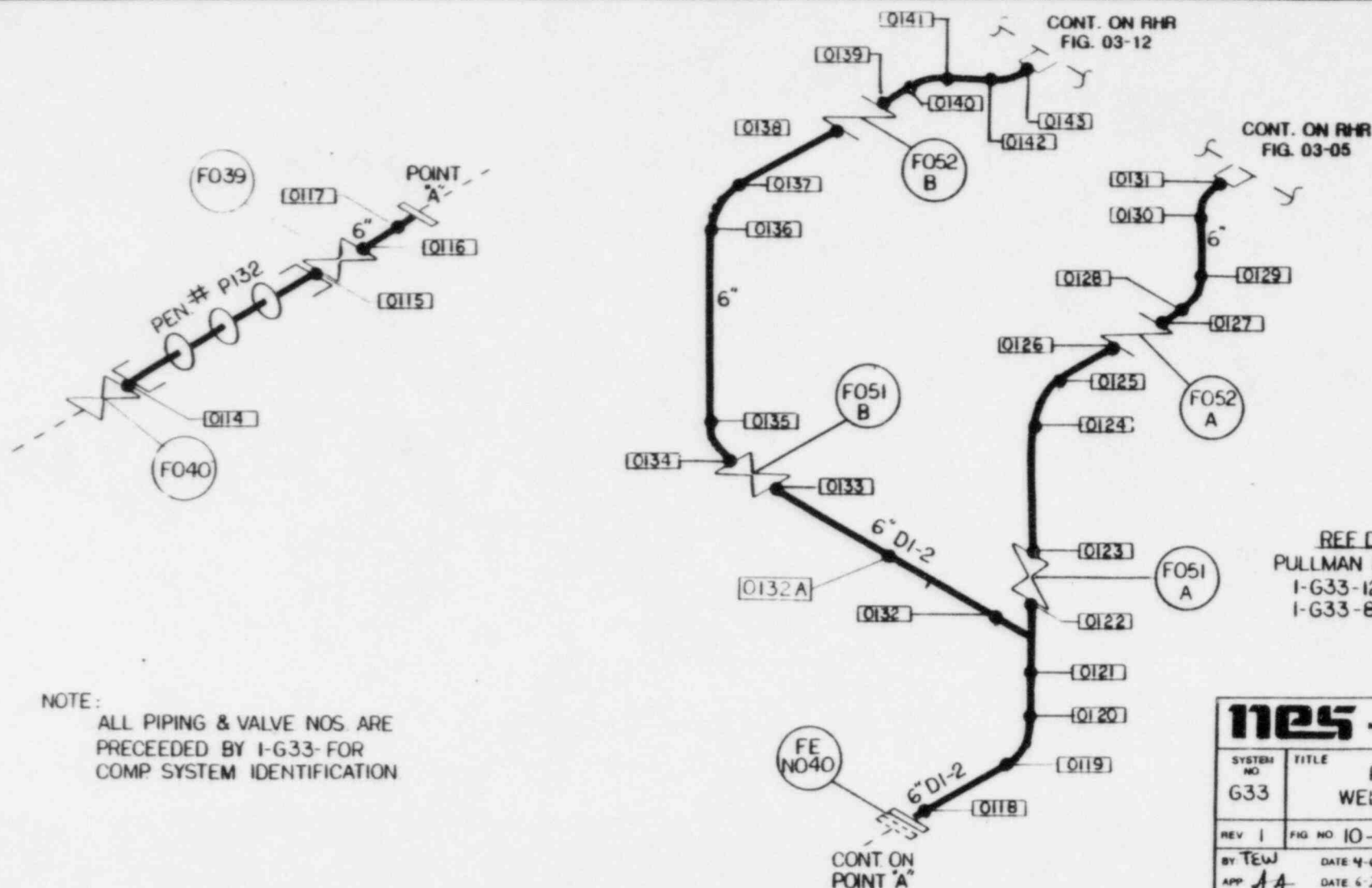
D-304-671 REV-D

D-304-672 REV-D

	NUCLEAR ENERGY SERVICES	
	TITLE SYSTEM CLASSIFICATION RWCU	
SYSTEM NO G-33	P/N NO B-10	GROUP A 1-12-82 GROUP B 2-23-81 PERRY-5532 PROJECT
REV O		NOT TO SCALE

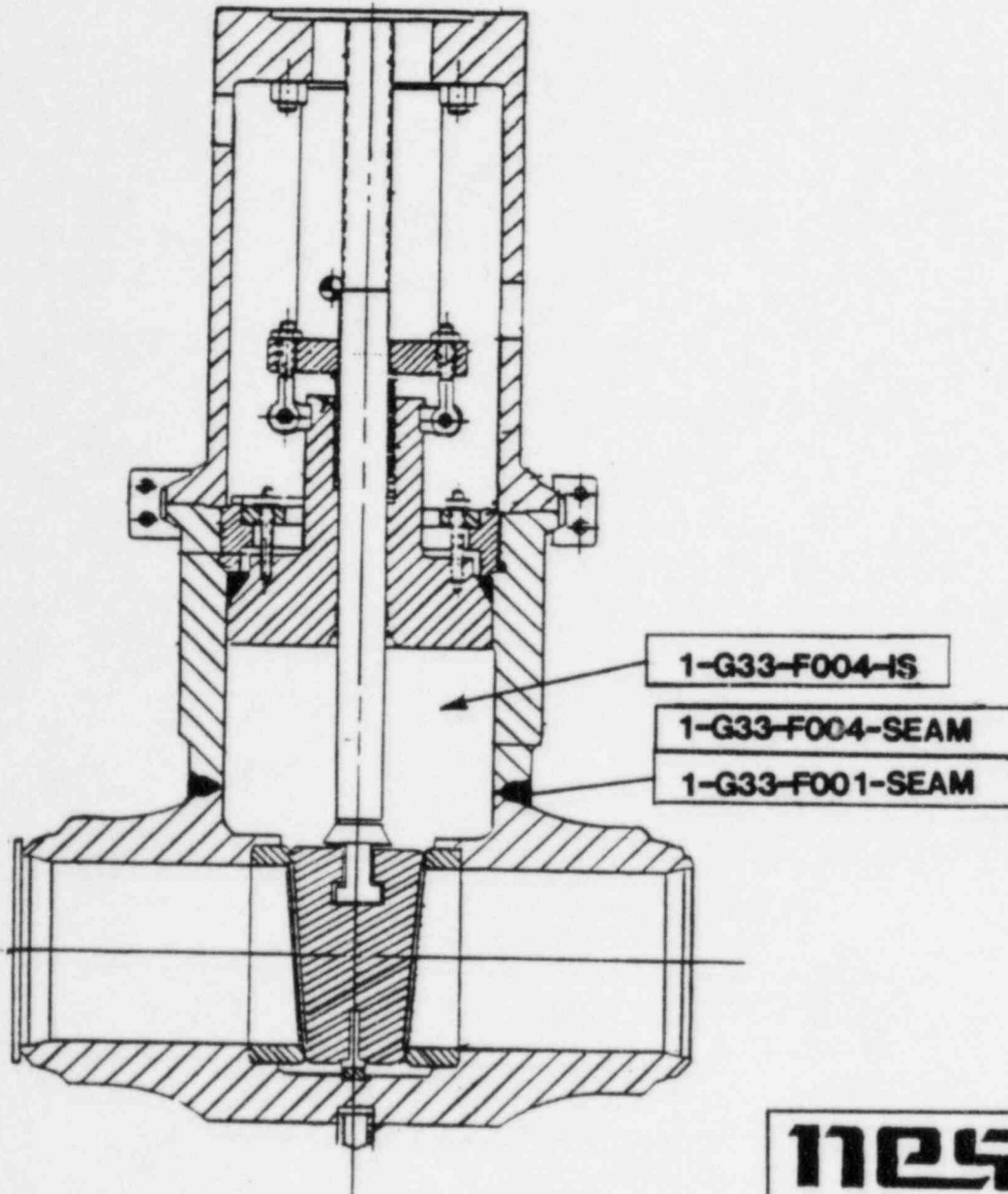






REF DWGS.  
PULLMAN KELLOGG  
I-G33-12 REV. 7  
I-G33-8 REV. 9

nes NUCLEAR ENERGY SERVICES	
SYSTEM NO. G33	TITLE RWCU WELD MAP
REV. 1	FIG. NO. 10-03
BY TEW	DATE 4-6-82
APP. A	DATE 6-23-82
PROJECT	5532-PERRY UNIT I
NOT TO SCALE	



REF. DWGS.

BORG WARNER DWG. NO. 81200

" " " " 81200-2

GAI DWG. NO. 4549-40-364-1-4

" " " " 4549-40-362-1-5

# NES

NUCLEAR ENERGY SERVICES

SYSTEM  
NO.  
**G33**

TITLE  
**RWCU 6" GATE  
VALVE F001 & F004  
SEAM LOCATION 2**

REV: **2**

FIG. NO. **10-04**

BY: *ED*  
APP: *AL*

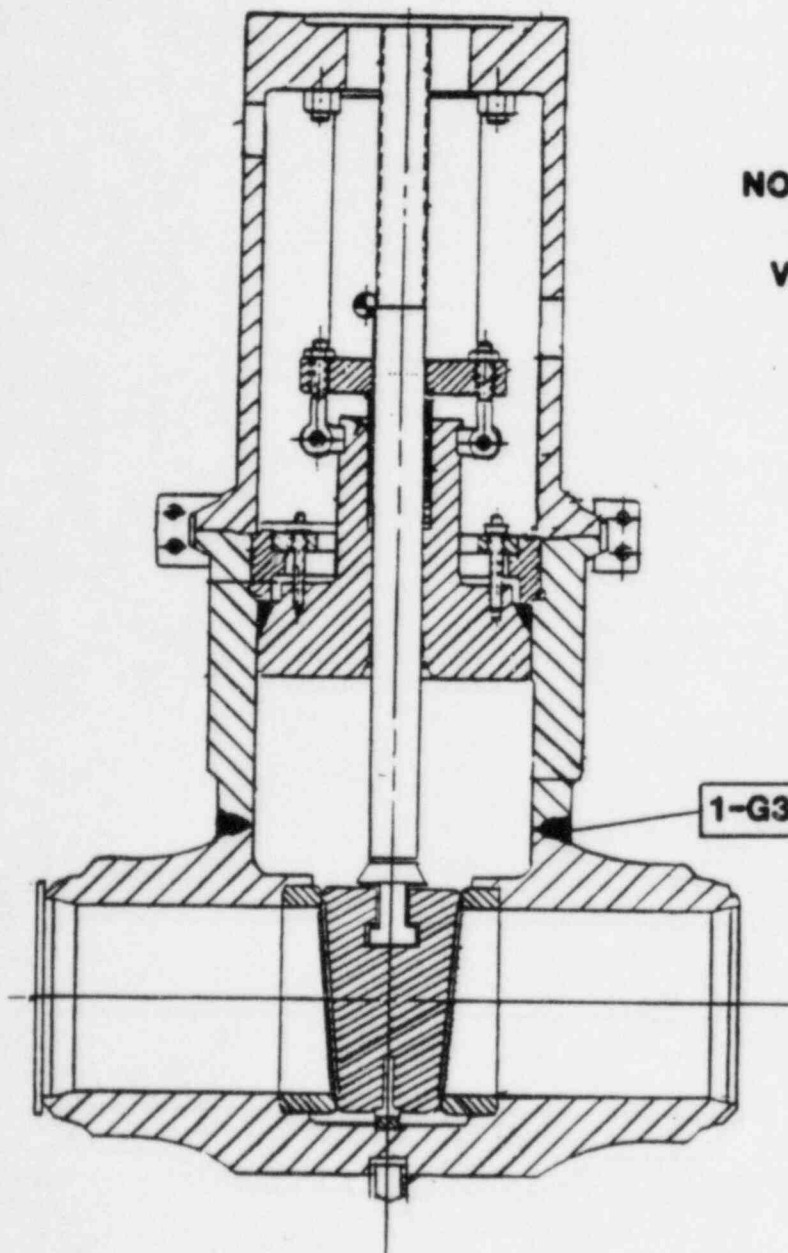
DATE: *3-15-85*  
DATE: *3/29/85*

**CLASS 1**

PROJECT:

**PERRY UNIT 1**

NOT TO SCALE



**NOTE: WELD IDENTIFICATION  
NUMBER FOR IDENTICAL  
VALVES F101 & F106  
1-G33-F101-SEAM  
1-G33-F106-SEAM**

**1-G33-F100-SEAM**

**REF. DWGS.**

**BORG WARNER DWG. NO. 81190-1**

" " " " **81180**

**GAI DWG. NO. 4549-40-360-1-3**

" " " **4549-40-344-4-7**

# NES

NUCLEAR ENERGY SERVICES

SYSTEM NO. <b>G33</b>	TITLE <b>RWCU GATE VALVES 4"F100, F106 &amp; 3"F101 SEAM LOCATION</b>	
REV: <b>2</b>	FIG. NO. <b>10-05</b>	
BY: <i>ESD</i>	DATE: <i>3.15.85</i>	<b>CLASS 1</b>
APP: <i>AL</i>	DATE: <i>3/20/85</i>	
PROJECT: <b>PERRY UNIT 1</b>		
NOT TO SCALE		



System: RWCU  
Document No. 80A4429  
Preservice Inspection

# nes

## PROGRAM PLAN AND SCHEDULE

5532 - PERRY

By: \_\_\_\_\_ / \_\_\_\_\_  
App: AK / 3/83  
Rev. 2 Page 15 of 32

COMPONENT IDENTIFICATION	COMPONENT DESCRIPTION	PROCEDURE NUMBER	CALIBRATION BLOCK (If applicable)	CODE CATEGORY	CODE EXAM METHOD	ZONE NO.	REMARKS
<b>PIPING WELDS</b> Ref. Dwg. 10-01							
1-G33-0072	4" Pipe to Elbow	80A0186	PY-4 80-CS	B-J	UT	II	
		80A0183	N/A		PT		
1-G33-0071	4" Elbow to Pipe	80A0186	PY-4 80-CS	B-J	UT	II	
		80A0183	N/A		PT		
1-G33-0070	4" Pipe to Elbow	80A0186	PY-4 80-CS	B-J	UT	II	
		80A0183	N/A		PT		
1-G33-0069	4" Elbow to Valve F102	80A0186	PY-4 XXI-CS-F	B-J	UT	II	
		80A0183	N/A		PT		
1-G33-0068	4" Valve F102 to Pipe	80A0186	PY-4 80-CS	B-J	UT	II	
		80A0183	N/A		PT		
1-G33-0067A	4" Pipe to Pipe	80A0186	PY-4 80-CS	B-J	UT	II	
		80A0183	N/A		PT		
1-G33-0067	4" Pipe to Reducer	80A0186	PY-4 80-CS	B-J	UT	II	
		80A0183	N/A		PT		
1-G33-0066	4" x 6" Reducer to Pipe	80A0186	PY-6 80-CS	B-J	UT	II	
		80A0183	N/A		PT		



System: RWCU  
 Document No. 80A4429  
 Preservice Inspection

# nes

## PROGRAM PLAN AND SCHEDULE

5532 - PERRY

By: \_\_\_\_\_ / \_\_\_\_\_  
 App: ALC / 3/85  
 Rev. 2 Page 16 of 32

COMPONENT IDENTIFICATION	COMPONENT DESCRIPTION	PROCEDURE NUMBER	CALIBRATION BLOCK (If applicable)	CODE CATEGORY	CODE EXAM METHOD	ZONE NO.	REMARKS
	<b>PIPING WELDS</b> Ref. Dwg. 10-01						
1-G33-0065	6" Pipe to Tee	80A0186	PY-6 80-CS	B-J	UT	II	
		80A0183	N/A		PT		
1-G33-0051	6" x 6" Tee to Pipe	80A0186	PY-6 80-CS	B-J	UT	II	
		80A0183	N/A		PT		
1-G33-0052	6" Pipe to Flow Element FE NO35	80A0186	PY-6 80-CS	B-J	UT	II	
		80A0183	N/A		PT		
1-G33-0053	6" Flow Element FE-NO35 to Pipe	80A0186	PY-6 80-CS	B-J	UT	II	
		80A0183	N/A		PT		
1-G33-0054	6" Pipe to Elbow	80A0186	PY-6 80-CS	B-J	UT	II	
		80A0183	N/A		PT		
1-G33-0055	6" Elbow to Pipe	80A0186	PY-6 80-CS	B-J	UT	II	
		80A0183	N/A		PT		
1-G33-0056	6" Pipe to Elbow	80A0186	PY-6 80-CS	B-J	UT	II	
		80A0183	N/A		PT		
1-G33-0057	6" Elbow to Pipe	80A0186	PY-6 80-CS	B-J	UT	II	
		80A0183	N/A		PT		

System: RWCU  
Document No. 80A4429  
Preservice Inspection

# nes

## PROGRAM PLAN AND SCHEDULE

5532 - PERRY

By: \_\_\_\_\_ / \_\_\_\_\_  
App: AL / 3/8/5  
Rev. 2 Page 17 of 32

COMPONENT IDENTIFICATION	COMPONENT DESCRIPTION	PROCEDURE NUMBER	CALIBRATION BLOCK (If applicable)	CODE CATEGORY	CODE EXAM METHOD	ZONE NO.	REMARKS
<b>PIPING WELDS</b> Ref. Dwg. No. 10-01							
I-G33-0058	6" Pipe to Elbow	80A0186	PY-6 80-CS	B-J	UT	II	
		80A0183	N/A		PT		
I-G33-0059	6" Elbow to Pipe	80A0186	PY-6 80-CS	B-J	UT	II	
		80A0183	N/A		PT		
I-G33-0060	6" Pipe to Valve F001	80A0186	PY-6 80-CS	B-J	UT	II	
		80A0183	N/A		PT		
I-G33-0061	6" Valve F001 to Pipe	80A0186	PY-6 80-CS	B-J	UT	II	
		80A0183	N/A		PT		
I-G33-0062	6" Pipe to Penetration P131 Process Pipe	80A0186	PY-6 80-CS	B-J	UT	II	
		80A0183	N/A		PT		
I-G33-0063	6" Penetration P131 Process Pipe to Pipe	80A0186	PY-6 80-CS	B-J	UT	II	
		80A0183	N/A		PT		
I-G33-0064	6" Pipe to Valve F004	80A0186	PY-6 80-CS	B-J	UT	II	
		80A0183	N/A		PT		
I-G33-0050	6" x 6" Tee to Pipe	80A0186	PY-6 80-CS	B-J	UT	II	
		80A0183	N/A		PT		

System: RWCU  
 Document No. 80A4429  
 Preservice Inspection

**nes**  
**PROGRAM PLAN AND SCHEDULE**  
 5532 - PERRY

By: \_\_\_\_\_ / \_\_\_\_\_  
 App: AL / 3/85  
 Rev. 2 Page 18 of 32

COMPONENT IDENTIFICATION	COMPONENT DESCRIPTION	PROCEDURE NUMBER	CALIBRATION BLOCK (If applicable)	CODE CATEGORY	CODE EXAM METHOD	ZONE NO.	REMARKS
<b>PIPING WELDS</b> Ref. Dwg. No. 10-01							
1-G33-0049	6" Pipe to Reducer	80A0186	PY-6	B-J	UT	II	
		80A0183	80-CS N/A		PT		
1-G33-0048	6" x 3" Reducer to Pipe	80A0183	N/A	B-J	PT	II	
1-G33-0047	3" Pipe to Elbow	80A0183	N/A	B-J	PT	II	
1-G33-0046	3" Elbow to Pipe	80A0183	N/A	B-J	PT	II	
1-G33-0045	3" Pipe to Elbow	80A0183	N/A	B-J	PT	II	
1-G33-0044	3" Elbow to Pipe	80A0183	N/A	B-J	PT	II	
1-G33-0043	3" Pipe to Elbow	80A0183	N/A	B-J	PT	II	
1-G33-0042	3" Elbow to Pipe	80A0183	N/A	B-J	PT	II	

System: RWCU  
Document No. 80A4429  
Preservice Inspection

# nes

## PROGRAM PLAN AND SCHEDULE

552 - PERRY

By: \_\_\_\_\_ / \_\_\_\_\_  
App: AK / 3/85  
Rev. 2 Page 19 of 32

COMPONENT IDENTIFICATION	COMPONENT DESCRIPTION	PROCEDURE NUMBER	CALIBRATION BLOCK (If applicable)	CODE CATEGORY	CODE EXAM METHOD	ZONE NO.	REMARKS
<b>PIPING WELDS</b> Ref. Dwg. No. 10-01							
1-G33-0041	3" Pipe to Tee	80A0183	N/A	B-J	PT	II	
1-G33-0034	3"x 3" x 1-1/2" Tee to Pipe	80A0183	N/A	B-J	PT	II	
1-G33-0033	3" Pipe to Valve F101	80A0183	N/A	B-J	PT	II	
1-G33-0032	3" Valve F101 to Pipe	80A0183	N/A	B-J	PT	II	
1-G33-0031	3" Pipe to Elbow	80A0183	N/A	B-J	PT	II	
1-G33-0030	3" Elbow to Pipe	80A0183	N/A	B-J	PT	II	
1-G33-0029	3" Pipe to Tee	80A0183	N/A	B-J	PT	II	
1-G33-0028	3" x 3" x 1-1/2" Tee to Pipe	80A0183	N/A	B-J	PT	II	

System: RWCU  
Document No. 80A4429  
Preservice Inspection

**NES**  
**PROGRAM PLAN AND SCHEDULE**  
5532 - PERRY

By: \_\_\_\_\_ / \_\_\_\_\_  
App: AK / 3/85  
Rev. 2 Page 20 of 32

COMPONENT IDENTIFICATION	COMPONENT DESCRIPTION	PROCEDURE NUMBER	CALIBRATION BLOCK (If applicable)	CODE CATEGORY	CODE EXAM METHOD	ZONE NO.	REMARKS
PIPING WELDS Ref. Dwg. No. 10-01							
1-G33-0027	3" Pipe to 3" x 2" Reducer	80A0183	N/A	B-J	PT	II	

System: RWCU  
 Document No. 80A4429  
 Preservice Inspection

# nes

## PROGRAM PLAN AND SCHEDULE

5532 - PERRY

By:           /            
 App: AK / 3/8-5  
 Rev. 2 Page 21 of 32

COMPONENT IDENTIFICATION	COMPONENT DESCRIPTION	PROCEDURE NUMBER	CALIBRATION BLOCK (If applicable)	CODE CATEGORY	CODE EXAM METHOD	ZONE NO.	REMARKS
<b>PIPING WELDS</b> Ref. Dwg. No. 10-02							
1-G33-0113	4" Weldolet to Pipe	80A0186	PY-4 80-CS	B-J	UT	IV	
		80A0183	N/A		PT		
1-G33-0112	4" Pipe to Elbow	80A0186	PY-4 80-CS	B-J	UT	IV	
		80A0183	N/A		PT		
1-G33-0111	4" Elbow to Pipe	80A0186	PY-4 80-CS	B-J	UT	IV	
		80A0183	N/A		PT		
1-G33-0110	4" Pipe to Elbow	80A0186	PY-4 80-CS	B-J	UT	IV	
		80A0183	N/A		PT		
1-G33-0109	4" Elbow to Pipe	80A0186	PY-4 80-CS	B-J	UT	IV	
		80A0183	N/A		PT		
1-G33-0108	4" Pipe to Valve F100	80A0186	PY-4 80-CS	B-J	UT	IV	
		80A0183	N/A		PT		
1-G33-0107	4" Valve F100 to Pipe	80A0186	PY-4 80-CS	B-J	UT	IV	
		80A0183	N/A		PT		
1-G33-0106	4" Pipe to Pipe	80A0186	PY-4 80-CS	B-J	UT	IV	
		80A0183	N/A		PT		

System: RWCU  
Document No. 80A4429  
Preservice Inspection

# nes

## PROGRAM PLAN AND SCHEDULE

5532 - PERRY

By: \_\_\_\_\_ / \_\_\_\_\_  
App: AK / 3/85  
Rev. 2 Page 22 of 32

COMPONENT IDENTIFICATION	COMPONENT DESCRIPTION	PROCEDURE NUMBER	CALIBRATION BLOCK (If applicable)	CODE CATEGORY	CODE EXAM METHOD	ZONE NO.	REMARKS
<b>PIPING WELDS</b> Ref. Dwg. No. 10-02							
1-G33-0105	4" Pipe to Elbow	80A0186	PY-4	B-J	UT	IV	
		80A0183	80-CS N/A		PT		
1-G33-0104	4" Elbow to Pipe	80A0186	PY-4	B-J	UT	IV	
		80A0183	80-CS N/A		PT		
1-G33-0103	4" Pipe to Elbow	80A0186	PY-4	B-J	UT	IV	
		80A0183	80-CS N/A		PT		
1-G33-0102	4" Elbow to Pipe	80A0186	PY-4	B-J	UT	IV	
		80A0183	80-CS N/A		PT		
1-G33-0101	4" Pipe to Elbow	80A0186	PY-4	B-J	UT	IV	
		80A0183	80-CS N/A		PT		
1-G33-0100	4" Elbow to Pipe	80A0186	PY-4	B-J	UT	IV	
		80A0183	80-CS N/A		PT		
1-G33-0099	4" Pipe to Elbow	80A0186	PY-4	B-J	UT	IV	
		80A0183	80-CS N/A		PT		
1-G33-0098	4" Elbow to Pipe	80A0186	PY-4	B-J	UT	IV	
		80A0183	80-CS N/A		PT		



System: RWCU  
Document No. 80A4429  
Preservice Inspection

# nes

## PROGRAM PLAN AND SCHEDULE

5532 - PERRY

By: \_\_\_\_\_  
App: AK / 3/85  
Rev. 2 Page 23 of 32

COMPONENT IDENTIFICATION	COMPONENT DESCRIPTION	PROCEDURE NUMBER	CALIBRATION BLOCK (If applicable)	CODE CATEGORY	CODE EXAM METHOD	ZONE NO.	REMARKS
<b>PIPING WELDS</b> Ref. Dwg. No. 10-02							
1-G33-0097	4" Pipe to Elbow	80A0186	PY-4	B-J	UT	IV	
		80A0183	80-CS N/A		PT		
1-G33-0096	4" Elbow to Pipe	80A0186	PY-4	B-J	UT	IV	
		80A0183	80-CS N/A		PT		
1-G33-0095	4" Pipe to Elbow	80A0186	PY-4	B-J	UT	IV	
		80A0183	80-CS N/A		PT		
1-G33-0094	4" Elbow to Pipe	80A0186	PY-4	B-J	UT	IV	
		80A0183	80-CS N/A		PT		
1-G33-0093	4" Pipe to Elbow	80A0186	PY-4	B-J	UT	IV	
		80A0183	80-CS N/A		PT		
1-G33-0092	4" Elbow to Pipe	80A0186	PY-4	B-J	UT	IV	
		80A0183	80-CS N/A		PT		
1-G33-0091	4" Pipe to Pipe	80A0186	PY-4	B-J	UT	IV	
		80A0183	80-CS N/A		PT		
1-G33-0090	4" Pipe to Elbow	80A0186	PY-4	B-J	UT	IV	
		80A0183	80-CS N/A		PT		

System: RWCU  
Document No. 80A4429  
Preservice Inspection

# nes

## PROGRAM PLAN AND SCHEDULE

5532 - PERRY

By:           /            
App: AK / 3/85  
Rev. 2 Page 24 of 32

COMPONENT IDENTIFICATION	COMPONENT DESCRIPTION	PROCEDURE NUMBER	CALIBRATION BLOCK (If applicable)	CODE CATEGORY	CODE EXAM METHOD	ZONE NO.	REMARKS
<b>PIPING WELDS</b> <b>Ref. Dwg. No. 10-02</b>							
I-G33-0089	4" Elbow to Pipe	80A0186	PY-4	B-J	UT	II	
		80A0183	80-CS N/A		PT		
I-G33-0088	4" Pipe to Tee	80A0186	PY-4	B-J	UT	II	
		80A0183	80-CS N/A		PT		
I-G33-0076	4" x 4" Tee to Pipe	80A0186	PY-4	B-J	UT	II	
		80A0183	80-CS N/A		PT		
I-G33-0077	4" Pipe to Elbow	80A0186	PY-4	B-J	UT	II	
		80A0183	80-CS N/A		PT		
I-G33-0078	4" Elbow to Pipe	80A0186	PY-4	B-J	UT	II	
		80A0183	80-CS N/A		PT		
I-G33-0079	4" Pipe to Elbow	80A0186	PY-4	B-J	UT	II	
		80A0183	80-CS N/A		PT		
I-G33-080	4" Elbow to Pipe	80A0186	PY-4	B-J	UT	II	
		80A0183	80-CS N/A		PT		
I-G33-0081	4" Pipe to Valve F106	80A0186	PY-4	B-J	UT	II	
		80A0183	80-CS N/A		PT		

System: RWCU  
 Document No. 80A4429  
 Preservice Inspection

# nes

## PROGRAM PLAN AND SCHEDULE

5532 - PERRY

By: \_\_\_\_\_ / \_\_\_\_\_  
 App: AK / 3/85  
 Rev. 2 Page 25 of 32

COMPONENT IDENTIFICATION	COMPONENT DESCRIPTION	PROCEDURE NUMBER	CALIBRATION BLOCK (If applicable)	CODE CATEGORY	CODE EXAM METHOD	ZONE NO.	REMARKS
<b>PIPING WELDS</b>							
<b>Ref. Dwg. No. 10-02</b>							
1-G33-0082	4" Valve F106 to Pipe	80A0186	PY-4	B-J	UT	IV	
			80-CS				
		80A0183	N/A		PT		
1-G33-0083	4" Pipe to Elbow	80A0186	PY-4	B-J	UT	IV	
			80-CS				
		80A0183	N/A		PT		
1-G33-0084	4" Elbow to Pipe	80A0186	PY-4	B-J	UT	IV	
			80-CS				
		80AC	N/A		PT		
1-G33-0085	4" Pipe to Elbow	80A0186	PY-4	B-J	UT	IV	
			80-CS				
		80A0183	N/A		PT		
1-G33-0086	4" Elbow to Pipe	80A0186	PY-4	B-J	UT	IV	
			80-CS				
		80A0183	N/A		PT		
1-G33-0087	4" Pipe to Weldolet	80A0186	PY-4	B-J	UT	IV	
			80-CS				
		80A0183	N/A		PT		
1-G33-0075	4" x 4" Tee to Pipe	80A0186	PY-4	B-J	UT	IV	
			80-CS				
		80A0183	N/A		PT		
1-G33-0074	4" Pipe to Elbow	80A0186	PY-4	B-J	UT	IV	
			80-CS				
		80A0183	N/A		PT		

System: RWCU  
Document No. 80A4429  
Preservice Inspection

**nes**  
**PROGRAM PLAN AND SCHEDULE**  
5532 - PERRY

By: AK / 1  
App: 3/85  
Rev. 2 Page 26 of 32

COMPONENT IDENTIFICATION	COMPONENT DESCRIPTION	PROCEDURE NUMBER	CALIBRATION BLOCK (If applicable)	CODE CATEGORY	CODE EXAM METHOD	ZONE NO.	REMARKS
PIPING WELDS Ref. Dwg. No. 10-02							
1-G33-0073	4" Elbow to Pipe	80A0186	PY-4	B-J	UT	II	
		80A0183	80-CS N/A		PT		

System: R#CU  
 Document No. 80A4429  
 Preservice Inspection

# nes

## PROGRAM PLAN AND SCHEDULE

5532 - PERRY

By:                       
 App: AK / 1 / 3/85  
 Rev. 2 Page 27 of 32

COMPONENT IDENTIFICATION	COMPONENT DESCRIPTION	PROCEDURE NUMBER	CALIBRATION BLOCK (If applicable)	CODE CATEGORY	CODE EXAM METHOD	ZONE NO.	REMARKS
<b>PIPING WELDS</b>							
<b>Ref. Dwg. No. 10-03</b>							
1-G33-0143	6" Weldolet to Elbow	80A0168	PY-6	C-F	UT	XI	
		80A0183	XXI-CS-F N/A		PT		
1-G33-0142	6" Elbow to Pipe	80A0186	PY-6-	C-F	UT	XI	
		80A0183	120-CS N/A		PT		
1-G33-0141	6" Pipe to Elbow	80A0186	PY-6-	C-F	UT	XI	
		80A0183	120-CS N/A		PT		
1-G33-0140	6" Elbow to Pipe	80A0186	PY-6-	C-F	UT	XI	
		80A0183	120-CS N/A		PT		
1-G33-0139	6" Pipe to Valve F052B	80A0186	PY-6-	C-F	UT	XI	
		80A0183	120-CS N/A		PT		
1-G33-0138	6" Valve F052B to Pipe	80A0186	PY-6-	C-F	UT	XI	
		80A0183	120-CS N/A		PT		
1-G33-0137	6" Pipe to Elbow	80A0186	PY-6-	C-F	UT	XI	
		80A0183	120-CS N/A		PT		
1-G33-0136	6" Elbow to Pipe	80A0186	PY-6-	C-F	UT	XI	
		80A0183	120-CS N/A		PT		

System: RWCU  
Document No. 80A4429  
Preservice Inspection

# nes

## PROGRAM PLAN AND SCHEDULE

5532 - PERRY

By:                       
App: AL / 3/83  
Rev. 3 Page 28 of 32

COMPONENT IDENTIFICATION	COMPONENT DESCRIPTION	PROCEDURE NUMBER	CALIBRATION BLOCK (If applicable)	CODE CATEGORY	CODE EXAM METHOD	ZONE NO.	REMARKS
<b>PIPING WELDS</b> <b>Ref. Dwg. No. 10-03</b>							
1-G33-0135	6" Pipe to Elbow	80A0168	PY-6-120-CS	C-F	UT	XI	
		80A0183	N/A		PT		
1-G33-0134	6" Elbow to Valve F051B	80A0186	PY-6-XXI-CS-F	C-F	UT	XI	
		80A0183	N/A		PT		
1-G33-0133	6" Valve F051B to Pipe	80A0186	PY-6-120-CS	C-F	UT	XI	
		80A0183	N/A		PT		
1-G33-0132A	6" Pipe to Pipe	80A0186	PY-6-120-CS	N/A	UT	XI	Customer Req. Exam
		80A0183	N/A		PT		
1-G33-0132	6" Pipe to Tee	80A0186	PY-6-120-CS	C-F	UT	XI	
		80A0183	N/A		PT		
1-G33-0122	6" x 6" x 6" Tee to Valve F051A	83A0802	PY-6-XXI-CS-F	C-F	UT	XI	
		80A0183	N/A		PT		
1-G33-0123	6" Valve F051A to Pipe	80A0186	PY-6-120-CS	C-F	UT	XI	
		80A0183	N/A		PT		
1-G33-0124	6" Pipe to Elbow	80A0186	PY-6-120-CS	C-F	UT	XI	
		80A0183	N/A		PT		



System: RWCU  
Document No. 80A4429  
Preservice Inspection

# nes

## PROGRAM PLAN AND SCHEDULE

5532 - PERRY

By:                       
App: ALC / 13/85  
Rev. 2 Page 29 of 32

COMPONENT IDENTIFICATION	COMPONENT DESCRIPTION	PROCEDURE NUMBER	CALIBRATION BLOCK (If applicable)	CODE CATEGORY	CODE EXAM METHOD	ZONE NO.	REMARKS
<b>PIPING WELDS</b> Ref. Dwg. No. 10-03							
1-G33-0125	6" Elbow to Pipe	80A0186	PY-6-120-CS	C-F	UT	XI	
		80A0183	N/A		PT		
1-G33-0126	6" Pipe to Valve F052A	80A0168	PY-6-120-CS	C-F	UT	XI	
		80A0183	N/A		PT		
1-G33-0127	6" Valve F052A to Pipe	80A0186	PY-6-120-CS	C-F	UT	XI	
		80A0183	N/A		PT		
1-G33-0128	6" Pipe to Elbow	80A0186	PY-6-120-CS	C-F	UT	XI	
		80A0183	N/A		PT		
1-G33-0129	6" Elbow to Pipe	80A0186	PY-6-120-CS	C-F	UT	XI	
		80A0183	N/A		PT		
1-G33-0130	6" Pipe to Elbow	80A0186	PY-6-120-CS	C-F	UT	XI	
		80A0183	N/A		PT		
1-G33-0131	6" Elbow to Weldolet	80A0186	PY-6-XXI-CS-F	C-F	UT	XI	
		80A0183	N/A		PT		
1-G33-0121	6" x 6" x 6" Tee to Pipe	80A0186	PY-6-120-CS	C-F	UT	XI	
		80A0183	N/A		PT		



System: RWCU  
 Document No. 80A4429  
 Preservice Inspection

# nes

## PROGRAM PLAN AND SCHEDULE

5532 - PERRY

By:                       
 App: AK / 3/85  
 Rev. 2 Page 30 of 32

COMPONENT IDENTIFICATION	COMPONENT DESCRIPTION	PROCEDURE NUMBER	CALIBRATION BLOCK (If applicable)	CODE CATEGORY	CODE EXAM METHOD	ZONE NO.	REMARKS
<b>PIPING WELDS</b> Ref. Dwg. No. 10-03							
1-G33-0120	6" Pipe to Elbow	80A0186	PY-6-120-CS	C-F	UT	XI	
		80A0183	N/A		PT		
1-G33-0119	6" Elbow to Pipe	80A0186	PY-6-120-CS	C-F	UT	XI	
		80A0183	N/A		PT		
1-G33-0118	6" Pipe to Flange FE N040	80A0186	PY-6-120-CS	C-F	UT	XI	
		80A0183	N/A		PT		
1-G33-0117	6" Flange FE N040 to Pipe	80A0186	PY-6-120-CS	C-F	UT	XI	
		80A0183	N/A		PT		
1-G33-0116	6" Pipe to Valve F039	80A0186	PY-6-120-CS	C-F	UT	XI	
		80A0183	N/A		PT		
1-G33-0115	6" Valve F039 to Penetration Process Pipe	80A0186	PY-6-120-CS	C-F	UT	XI	
		80A0183	N/A		PT		
1-G33-0114	6" Penetration Process Pipe to Valve F040	80A0186	PY-6-120-CS	C-F	UT	XI	
		80A0183	N/A		PT		

System: RWCU  
 Document No. 80A4429  
 Preservice Inspection

# nes

## PROGRAM PLAN AND SCHEDULE

5532 - PERRY

By:                       
 App: AK / 3/8-5  
 Rev. 3 Page 31 of 32

COMPONENT IDENTIFICATION	COMPONENT DESCRIPTION	PROCEDURE NUMBER	CALIBRATION BLOCK (If applicable)	CODE CATEGORY	CODE EXAM METHOD	ZONE NO.	REMARKS
COMPONENT EXAMINATION Ref. Dwg. No. 10-01, 10-04							
i-G33-F001-SEAM	6" Valve G33-F001 Body Weld	80A0193	PY-Valve-XX2-CS	B-M-1	UT	II	<div>⚠</div>
		80A0183	N/A		PT		
I-G33-F004-SEAM	6" Valve G33-F004 Body Weld	80A0193	PY-Valve-XX2-CS	B-M-1	UT	II	
		80A0183	N/A		PT		
I-G33-F004-IS	6" Valve G33-F004 Internal Surface	80A0184	N/A	B-M-2	VT-1	II	
I-G33-F101-SEAM	3" Valve G33-F101 Body Weld	80A0193	PY-Valve-XX3-CS	B-M-1	UT	IV	
		80A0183	N/A		PT		



# PROGRAM PLAN AND SCHEDULE

5532 - PERRY

System: RWCU  
Document No. 80A4429  
Preservice Inspection

By:             
App: AL / 13/85  
Rev. 3 Page 32 of 32

COMPONENT IDENTIFICATION	COMPONENT DESCRIPTION	PROCEDURE NUMBER	CALIBRATION BLOCK (If applicable)	CODE CATEGORY	CODE EXAM METHOD	ZONE NO.	REMARKS
COMPONENT EXAMINATION Ref. Dwg. No. 10-02, 10-05							
1-G33-F100-SEAM	4" Valve G33-F100 Body Weld	80A0193	PY-Valve-XX3-CS	B-M-1	UT	IV	⚠ 3
		80A0183	N/A		PT		
1-G33-F106-SEAM	4" Valve G33-F106 Body Weld	80A0193	PY-Valve-XX3-CS	B-M-1	UT	IV	
		80A0183	N/A		PT		
1-G33-F101-SEAM	3" Valve G33-F101 Body Weld	80A0193	PY-Valve-XX3-CS	B-M-1	UT	IV	
		80A0183	N/A		PT		