

Shared Medical Technology, Inc.

Rt. 5, Box 324
Rice Lake, Wisconsin 54868
(715) 234-6518

07/09/85

Dear Mrs. Evelyn Matson:

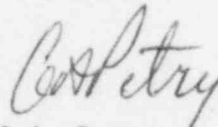
Control # 79216

The following answers relate to our phone conversation on 7/8/85.

1. Procedures for transporting will follow guidelines outlined in our letter dated 9/16/1982.
2. Procedures for changing the I 125 source will follow manufacturers guideline. Find copy enclosed. The sealed source capsule will not be removed from source holder by our employees.
3. Source will be removed and guidelines followed as in answer to question 2, and transported following guidelines explained in letter dated 9/16/1982.
4. Training to manipulate the source holder will be recieved during the manufacturers 8 hr. course.
5. Please remove Dr. Moore from the amendment, we will add him at a later date, after he recieves the required training.
6. The D.O.T. reference 49CFR 173-422. Guidelines will be followed as referenced in items 1 and 2.

Your prompt attention will be appreciated.

Sincerely,



G.A. Petry

JUL 10 1985

PROCEDURES FOR CHANGING THE I-125 RADIOACTIVE SOURCE
IN YOUR NORLAND BONE DENSITOMETER.

The radiation source is contained in a source holder which absorbs almost all of the emitted radiation when the cover is in place. Use caution when removing the source holder cover. When the cover is removed (by unscrewing), the radiation beam emerges from the small hole with a total angular spread of approximately 30 degrees (Figure 1).

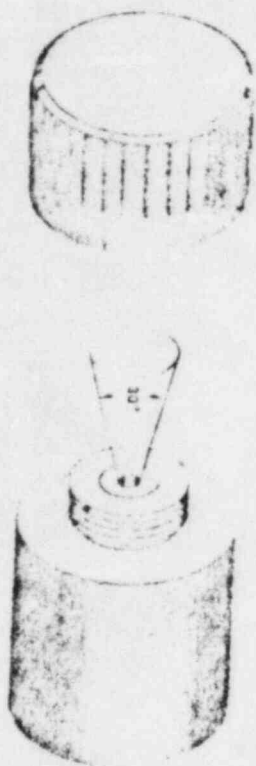


FIG. 1

"Source Assembly AECL C-236 or 178A591A with shipping cap removed 30 degree radiation field illustrated."

DANGER

THERE SHALL BE NO PERSONS IN THIS AREA
WHILE A SOURCE IS BEING LOADED INTO THE INSTRUMENT

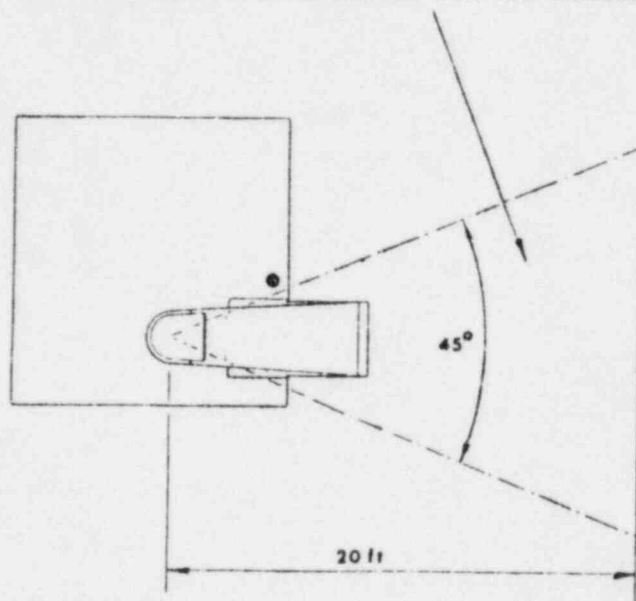


FIG. 2

"Radiation hazard area during source loading and unloading."

A 200mCi source delivers a maximum dose rate of approximately 200 mr/min at a distance of 2.5 cm. The protective cover should not be removed until the source is actually installed in the scanner. When installing the source, be sure that there are no persons in the scanner area indicated by Figure 2.

Turn off the Densitometer before starting the source installation. Remove the thumb screws holding the deck to the scanner base (two in front and one in back). Disconnect the cable from the back of the scanner. Unlock the deck from the base by turning the deck key counter-clockwise several turns until the deck is free.

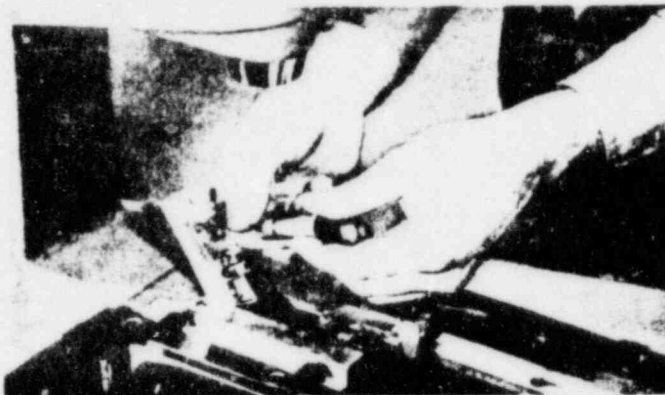
While loading or unloading the source, keep fingers away from the exposed end of the source holder at all times. Do not point the exposed source toward anyone. When removing the source from the scanner, reverse the loading procedure. Be sure to replace the cap on the source holder before transporting the source.

PROCEDURE FOR LOADING SOURCE

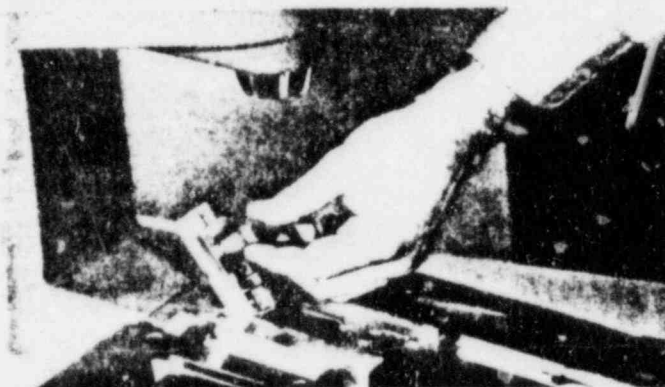
A. Lift source/shutter door.



B. Remove source cap. Hold source in position shown.



C. Screw source into source/shutter door, then close door.



D. Store cap for later use on clip in scanner.

