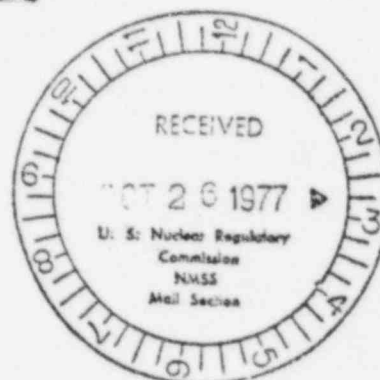


**KERR-McGEE NUCLEAR CORPORATION**

KERR-McGEE CENTER • OKLAHOMA CITY, OKLAHOMA 73125

~~October 24, 1977~~

Mr. Jack E. Rothfleisch
Fuel Processing & Fabrication Branch
Division of Fuel Cycle & Material Safety
U. S. Nuclear Regulatory Commission
Washington, D. C. 20555

Re: Docket No. 40-8027

Dear Mr. Rothfleisch:

During our meeting of September 26, 1977, at the Kerr-McGee Sequoyah Facility, you requested an updated drawing of our 160 acre fertilizer test plot. This has been prepared and a copy is enclosed.

We appreciate receiving our license renewal last week. It was a pleasure working on this with you.

Very truly yours,

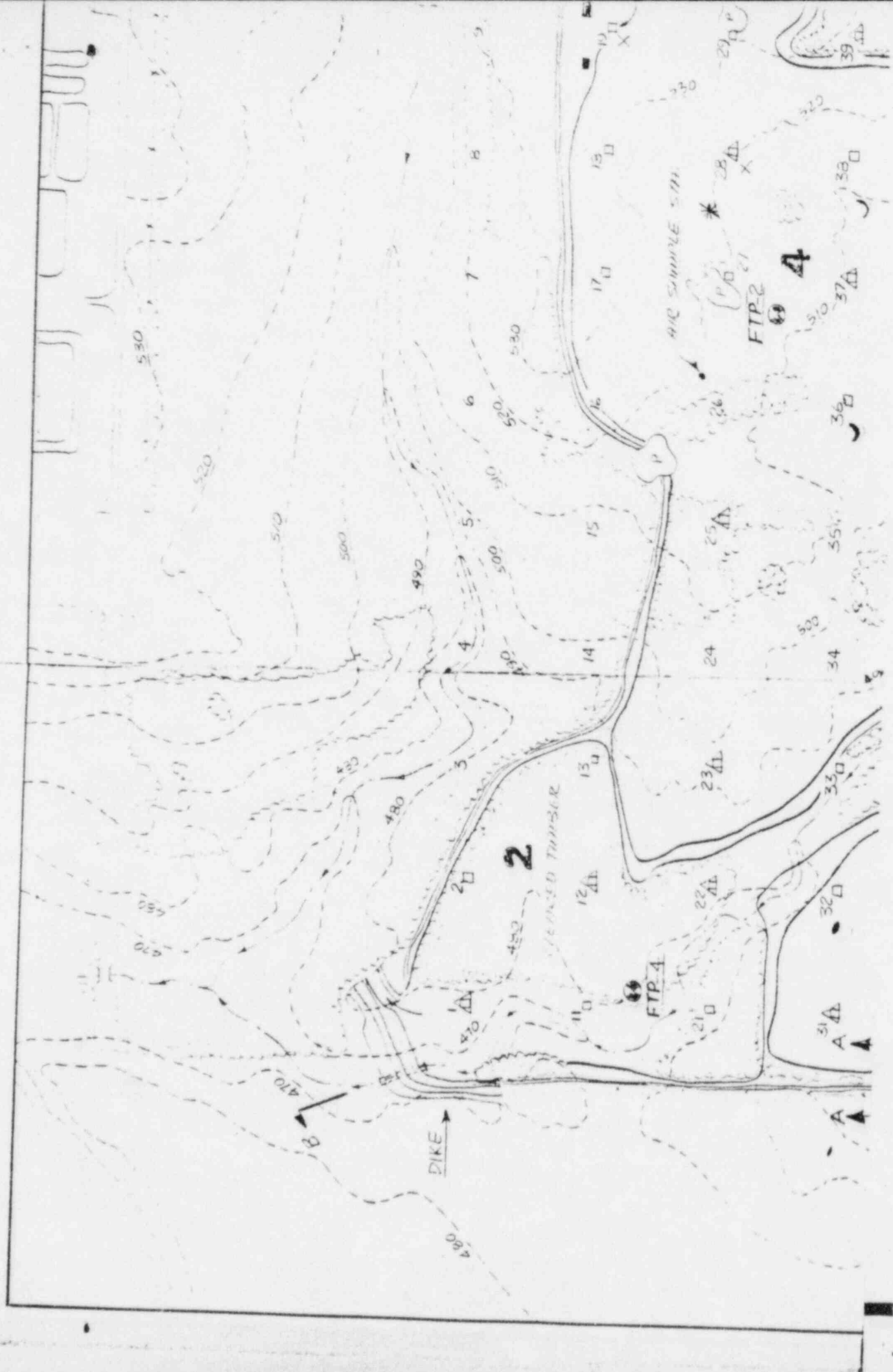
Gerald J. Sinke
Coordinator Radiation
Health & Safety

GJS:hw

Enclosure

B/45

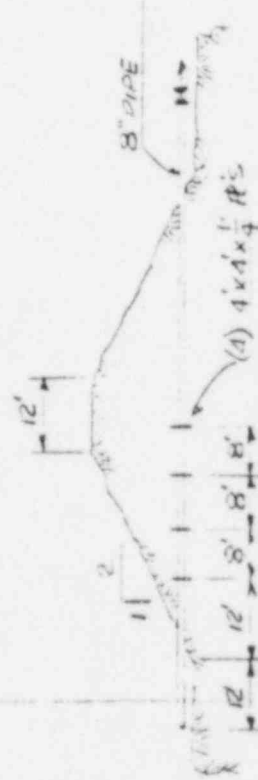
CS089







TYPICAL SECTION "AA"
(NBS)



SECTION B
(NBS)

FTP	COORDINATES		ELEVATION	
	NORTH	EAST	GROUND	TOP OF DIKE
1	9963	8722	509.3	509.8
2	9920	8057	511.2	512.6
3	10463	6842	492.5	493.5

4	11129	6300	481.5	485.4
5	9470	6313	502.2	503.6

LEGEND

1. PROVINCES 1, 2, 3, 4, 4.1, 4.5
TIMBER -----
OPEN -----
2. GRID SYSTEM - 300 FT SQ (206 ACRES)
3. GROUND WATER WELLS FTP
4. OPEN LAND - UNSHADOWED
5. TIMBER LAND - SHADOWED
6. SOIL TRANSPIRATION CUPS & SCAPTION CUPS X
7. SOIL SAMPLING
- PRE INVENTORY ☐
- FALL-INVENTORY ☐
- VEGETATION SAMPLING PLOTS *



00089

REV NO	DESCRIPTION	BY	DATE	APPR	NUCLEAR MANUFACTURING	KERR MCGEE NUCLEAR CORPORATION OKLAHOMA CITY, OK. 73102
1	RELATED TIMBER SUBPLOTS					
	OPEN AREA SUBPLOTS & ADDED PERMANENT PLOTS (REDRAWN)		10/31/77			
			DATE 10/31/77			
			APPROVED BY			
			SCALE 1"=200'			
			DRAWING NUMBER 110-C-1008			
			REV 3			

I-40 HWY