

J. P. Stohr
RSS

ASHFORD NUCLEAR CENTER
G.P.O. Box 64
SAN JUAN, PUERTO RICO 00936

April 3, 1985

35 APR 9 AIO: 56

J. Philip Stohr, Director
Division of Radiation Safety
and Safeguards
United States Nuclear
Regulatory Commission
101 Marietta St. N. W.
Atlanta, Georgia 30303

Dear Mr. Stohr:

Because of the absence of Mr. Millon, Administrator of the Ashford Memorial Community Hospital, I have been requested to write this letter in reply to your communication to us on March 5, 1985 in relation to a number of violations identified during the inspection of January 25, 1985.

PAGE 1, ITEM 1

This observation is true and we were not aware of it until pointed out at the time of the inspection. Even though the passageway is rarely used, the fact exists. The window has been eliminated and cement blocks have been used to cover the hole in the wall. Radiation levels in the hallway now are zero millirems per hour.

Full compliance achieved by March 1, 1985.

PAGE 1, ITEM 2

True. However, contamination surveys now include detector survey and swipe tests of receiving area (20), patient area (14 - 15), Laboratory area (9 - 10 - 11 - 12 - 16 - 17 - 18), Hot Laboratory (1 through 8), Doctor's office (19) and storage room (21). These are done on a daily basis for the detector survey and on a weekly basis for the swipe test. The daily detector surveys had been performed since the laboratory was started, and the swipe tests have been performed on a weekly basis since January 19, 1985 in all of the 21 points indicated in the Addendum A of the laboratory floor plan. Full compliance achieved as of January 19, 1985, up to the present.

8507230014 850523
REG2 LIC30 PDR
52-11810-02

Official Copy

PAGE 1 & 2, ITEM 3

Exposure records containing the required information had been filed in another folder for the evaluation of personnel exposure by the Nuclear Medicine Radiation Physics Consultant. Unfortunately, at the time of the inspection, those records were not filed together with the folder with the information prior to August 1984, and the personnel present in the laboratory at the time of the inspection were so anxious that they were not able to find them for the inspectors. Copies of these reports are being sent as Addendum B of this letter.

Full compliance had always been achieved. All laboratory personnel are being trained to identify all of these records and all should know their location, so that this does not happen again in future inspections.

PAGE 2, ITEM 4

True. The sign posted in the door of the Nuclear Medicine waste storage closet has been removed on several occasions by unknown persons. A sign will be painted in the door so that it can not be easily removed. In the meantime, daily checks are being made by the chief technologist to spot for the absence of the cardboard sign placed immediately after the inspection. So far, it has not been removed.

Full compliance achieved by January 25, 1985 at 5:00 p.m. when the new sign was posted.

PAGE 2, ITEM 5a

Radium - 226 Standard Source checks had been performed on the dose calibrator on a daily basis, however documentation of this had not been done properly.

At present we are performing daily checks with Cesium - 137, Barium - 133, Cobalt - 57 and Radium - 226 as constancy checks on the dose calibrator. This is being properly documented since February 4, 1985 up to the present.

Full compliance achieved by February 4, 1985 up to the present.

PAGE 2, ITEM 5b

External surveys of all packages received in the laboratory were performed with the detector and were properly documented. Unfortunately swipe tests were not performed unless the packages were damaged in any way. Swipe tests have been performed on every package received in the laboratory since February 4, 1985 and thereafter up to the present.

Full compliance achieved by February 4, 1985 until the present.

J. Philip Stohr
Page 3

A list has been prepared for the Director of the Laboratory and for the Radiation Protection Committee to review all the required matters necessary to comply with the Nuclear Regulatory Commission regulations. Hopefully this continued surveillance may correct and prevent such violations.

I hope that the above information meets with your approval.

Cordially yours,

A. A. Cintron Rivera
A. A. CINTRON RIVERA, M.D.^{m.d.}
Director
Nuclear Medicine Laboratory
Ashford Nuclear Center
Ashford Memorial Community
Hospital
G.P.O. Box 64
San Juan, Puerto Rico 00936

AAC/tms

Enclosures:

Addendum A

Addendum B (1 - 7)

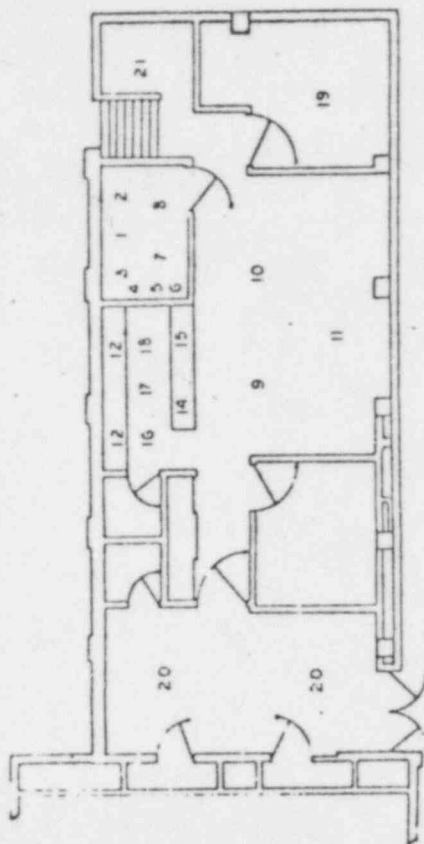
COPY TO MR. HILLON
DR. J. MIRALES

RADIATION PROTECTION PROGRAM
RADIATION SURVEY AND CONTAMINATION CONTROL

DATE: _____
SURVEYOR: _____

RADIATION LEVEL.
MR/HR

SMEAR TESTS
C/M



1. Isotope Storage
2. Isotope Storage
3. Sink (Hot Room)
4. Bench (Hot Room)
5. Bench
6. Bench
7. Floor (Hot Room)
8. Floor (Hot Room)
9. Floor Scintillation Camara Area
10. Floor Scintillation Camara Area
11. Floor Scintillation Camara Area
- 12- Bench (Laboratory)
- 13- Bench (Laboratory)
- 14- Bench (Laboratory)
- 15- Bench (Laboratory)
16. Floor (Laboratory)
17. Floor (Laboratory)
18. Floor (Laboratory)
19. Floor Doctors Office
20. Floor Waiting Room
21. Storage Room


Instrument Used: _____

ACCOUNT NO	SALES CODE
------------	---------------

Quality/Price Comparison: 86% EA

RADIATION DOSIMETRY REPORT

Landauer

R. S. Landauer, Jr. & Co. 
Division of Tech/Ops, Inc.
2 Science Road, Glenwood, Illinois 60425-1586
(312) 755-7000

Accredited by the
National Bureau of Standards
through

[illegible]

ASHFORD NUCLEAR CORP
HOSPITAL PRESBITERIANO
PRIMER PISO
PO BOX P
CAROLINA

PR 00530

RADIATION DOSIMETRY REPORT

Landauer

R. S. Landauer, Jr. & Co.
Division of TechOps, Inc.
2 Science Road, Glenwood, Illinois 60425-1586
(312) 755-7000

Accredited by the
National Bureau of Standards
through

1 - PR 0030 - 22335

PARTICIPANT ID NUMBER	NAME	SOCIAL SECURITY NUMBER	NOTE (SEE REVERSE SIDE)	DOSE TYPE	QUALITY	EXPOSURE TO BADGE (MILLIREMS) FOR PERIODS INDICATED BELOW				CUMULATIVE TOTALS (MILLIREMS)				ADJUSTMENTS	BIRTH DATE	NUMBER BADGE REPORTS	NOTES LTD BY FEDERAL REGS
						01/14/85		FOURTH		1984		PERMANENT					
						DEEP	SHALLOW	DEEP	SHALLOW	DEEP	SHALLOW	DEEP	SHALLOW				
00000	CONTROL																
00001	TLO CONTROL	584708445		G1		M		170	180	220	230	820	830		66	2	87
00002	CINTRON DR	584708445		G1		M		20	20	20	20	550	550		66	2	87
00003	CINTRON DR	580561886		G1		M		20	20	20	20	237	237		66	2	87
00004	COLLAZO P	580561886		G1		M		20	20	140	150	2060	2060		66	2	87
00005	COLLAZO P	580561886		G1		M		20	20	90	90	460	460		66	2	87
00006	CORTES C	582581746		G1		M		20	20	90	90	730	730		66	2	87
00007	RUSA P	582588342		G1		M		30	30	90	90	3620	3620		66	2	87
00008	CRUZ A	584349576		G1	P	10		90	90	760	780	8880	8880		66	2	87
00009	CRUZ A	584349576		G1		30		100	100	40	250	40	40		66	2	87
00010	DAVILA MARIA E	581014544		G1		M		20	20	40	40	200	200		66	2	87
00011	SANTAELLA E	583640058		G1	P	20		150	150	200	200	30	30		66	2	87
00012	AGUSTO L E	582191535		G1		M		20	20	30	30	760	760		66	2	87
00013	BELLU JOSE A	103226775		G1	CPB	100		100	760	100	760	210	210		66	2	87
00014	BELLU JOSE A	103226775		G1	B	660									66	2	87
00015	BELLU JOSE A	103226775		G1		210									66	2	87

IMPORTANT: SEE REVERSE SIDE FOR ADDITIONAL EXPLANATIONS.

DO NOT WRITE IN THESE SPACES
DO NOT WRITE IN THESE SPACES
DO NOT WRITE IN THESE SPACES

1. OTHER EXTREMITY
2. OTHER WHOLE BODY
3. WHOLE BODY

4. WHOLE BODY
5. WHOLE BODY
6. WHOLE BODY

7. WHOLE BODY
8. WHOLE BODY
9. WHOLE BODY

Addendum B (2)

ASHPURU RUCCLAR C4TH
HOSPITAL PATIENTS
PRIMER PISC
PU BUA P
CARULLIA
DE 00030

RADIATION DOSIMETRY REPORT

ACCOUNT NO.
32203

Landauer
R. S. Landauer, Jr. & Co.
Division of Tech/Opt, Inc.
2 Science Road, Glenwood, Illinois 60425-1596
(312) 755-7000

Accredited by the
National Bureau of Standards
through

1 - PR 3031 - 32325

PARTICIPANT ID NUMBER	NAME	SOCIAL SECURITY NUMBER	NOTE (SEE REVERSE SIDE)	DOSEMETER TYPE	RADIATION QUALITY	EXPOSURE TO BADGE (MILLIREMS) FOR PERIOD(S) INDICATED BELOW				CUMULATIVE TOTALS (MILLIREMS)				ADJUSTMENTS	USERS PARTIAL ACCUMULATED DOSE (MILLIREMS)	BIRTH DATE	NUMBER BADGE REPORTS	MILITARY STATUS
						12/14/84		12/14/84		YEAR TO DATE		PERMANENT						
						DEEP	SHALLOW	DEEP	SHALLOW	DEEP	SHALLOW	DEEP	SHALLOW					
00000	CONTROL																	
00001	TL0 CONTROL																	
00002	BELLO JOSE A	103226775																
00003	BELLO JOSE A	103226775																
00004	CONTROL																	
00005	TL0 CONTROL																	
00006	CINTRON D	584768445																
00007	CINTRON D	584768445																
00008	CULLAZO D	584768445																
00009	CULLAZO D	584768445																
00010	CUL-AZC P	584768445																
00011	CORTES C	584768445																
00012	KUSA P	584768445																
00013	KUSA P	584768445																
00014	KRUIZ A	584768445																
00015	KRUIZ A	584768445																
00016	DAVILA MARIA E	584768445																
00017	SANTANA A C	584768445																
00018	AGUSTO L E	584768445																

IMPORTANT: SEE REVERSE SIDE FOR ADDITIONAL EXPLANATIONS.

FOR EXPOSURE INFORMATION WHEN ONLY ONE ENERGY
RANGE IS POSSIBLE, INDICATE THAT THE FULL RANGE
WAS USED.

FOR EXPOSURE
INFORMATION
WHEN ONLY ONE
ENERGY RANGE IS
POSSIBLE, INDICATE
THAT THE FULL RANGE
WAS USED.

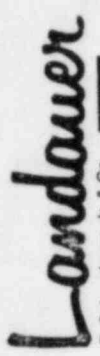
FOR EXPOSURE
INFORMATION
WHEN ONLY ONE
ENERGY RANGE IS
POSSIBLE, INDICATE
THAT THE FULL RANGE
WAS USED.

Addendum B(3)

ACCOUNT NO
32300

ASHFORD NUCLEAR CNTR
HOSPITAL PRESBITERIAN
PRIMER PISO
PO BOX 2
CARULINA
PR 00630

RADIATION DOSIMETRY REPORT



R. S. Landauer, Jr. & Co.
Division of TechOps, Inc.
2 Science Road, Glenwood, Illinois 60425-1586
(312) 755-7000

Accredited by the
National Bureau of Standards
through

PARTICIPANT ID NUMBER	NAME	SOCIAL SECURITY NUMBER	NOTE (SEE REVERSE SIDE)	DOSE METER TYPE USE	RADIATION QUALITY	EXPOSURE TO BADGE (MILLIREMS) FOR PERIOD(S) INDICATED BELOW				CALENDAR QUARTER				CUMULATIVE TOTALS (MILLIREMS)				ADJUSTMENTS	NUMBER BADGE REPORTS	BIRTH DATE		TO DATE	MO	DA	YR	TOTAL REMARKS		
						11/14/84		FOURTH		1984		PERMANENT																
						DEEP	SHALLOW	DEEP	SHALLOW	DEEP	SHALLOW	DEEP	SHALLOW															
FOR EXPOSURE PERIOD 10/15/84																												
00000	CONTROL		DL	G1	P	170	180	170	180	170	180	220	230	820	830			65	1	879								
00000	TLD CONTROL	584708445		G1	P	20	20	20	20	20	20	20	20	550	550	F214450		62	1	879								
00001	CINTRON DR	584708445		U3	P	20	20	20	20	20	20	20	20	60	60			61	523	64	1	879						
00001	CINTRON DR	580561886		U3	P	20	20	20	20	20	20	140	150	2330	2340			61	523	63	1	879						
00002	CULLAZO P	580561886		U3	P	20	20	20	20	20	20	190	190	2060	2060			60	336	63	1	879						
00002	CULLAZO P	580561886		U3	P	20	20	20	20	20	20	90	90	460	460	F149510		61	12235	64	1	879						
00003	CORTES C	582581746		G1	P	20	20	20	20	20	20	90	90	730	730	F109279		62	10244	62	1	879						
00004	ROSA P	582581746		G1	P	30	30	30	30	30	30	750	770	3610	3630	F56390		62	122253	62	1	879						
00005	CRUZ A	583449976		G1	PM	80	80	80	80	80	80	2520	2520	2850	2850			60	122253	60	1	879						
00005	CRUZ A	583449976		U3	P	20	20	20	20	20	20	40	40	40	40			61	10623	22	1	183						
00006	DAVILA MARIA E	581011111		G1	P	20	20	20	20	20	20	180	180	180	180			61	10623	22	1	183						
00007	SANTAE--A E	583840958		G1	PM	130	130	130	130	130	130	30	30	30	30			61	20554	3	1	884						
00008	AGUSTO L E	582191535		G1	P	20	20	20	20	20	20	30	30	30	30			61	21460	3	1	884						

1 - PR 3030 - 32371

2 Science Road, Glenwood, Illinois 60425-1596
(312) 755-7000

REVERSE SIDE FOR ADDITIONAL EXPLANATIONS

1 2 3 4 5 6 7 8 9 10 11 12 13 14 15 16 17 18 19 20 21 22

SEE REVERSE SIDE FOR ADDITIONAL EXPLANATIONS

Addendum B(4)

1. NAME
 2. SOCIAL SECURITY NUMBER
 3. DATE OF BIRTH
 4. DATE OF EXPOSURE
 5. DATE OF DEVELOPMENT
 6. DATE OF READING
 7. DATE OF REPORT

RADIATION DOSIMETRY REPORT

Landauer
 a Tech-Opt company

R. S. Landauer, Jr. & Co.
 2 Science Road
 Glenwood, Illinois 60425-1586
 Telephone (312) 755-7000

QUALITY CONTROL REPORT
 JON

DE 2062 - 3 3 3 3

PARTICIPANT ID NUMBER	NAME	SOCIAL SECURITY NUMBER	NOTE (SEE REVERSE SIDE)	DOSIMETER TYPE USE	RADIATION QUALITY	EXPOSURE TO BADGE (MILLIREMS) FOR PERIOD(S) INDICATED BELOW		CALENDAR QUARTER		YEAR TO DATE		PERMANENT		ADJUSTMENTS	DUES PER-SECT. AUTH. (MILLIREMS)	BIRTH DATE	NUMBER BADGE REPORTS	RECEIVED DATE	TOTAL
						DEEP	SHALLOW	DEEP	SHALLOW	DEEP	SHALLOW	DEEP	SHALLOW						
	NO DATE		IC LE																
	FOR EXPOSURE PERIOD 08/15/84 TO 08/15/84																		
00000	CONTROL																		
00007	SATALLA E	587470845	GI P																
00008	ROUSTO L E	587470845	GI P																
	FOR EXPOSURE PERIOD 08/15/84 TO 08/15/84																		
00000	CONTROL																		
00000	TLD CONTROL																		
00001	CINTON BR	587470845	GI																
00001	CINTON BR	587470845	GI																
00002	COLLAZO	587470845	GI																
00002	COLLAZO P	587470845	GI																
00004	ROSA P	587470845	GI																
00005	CRUZ A	587470845	GI PL																
00006	DAVILA MARIA E	587470845	GI																

IMPORTANT! SEE REVERSE SIDE FOR ADDITIONAL EXPLANATIONS
 1. OTHER EXTREMITY
 2. BADGE MUST BE WORN ON WHOLE BODY
 3. WHOLE BODY
 4. WHOLE BODY
 5. WHOLE BODY
 6. WHOLE BODY
 7. WHOLE BODY
 8. WHOLE BODY
 9. WHOLE BODY
 10. WHOLE BODY
 11. WHOLE BODY
 12. WHOLE BODY
 13. WHOLE BODY
 14. WHOLE BODY
 15. WHOLE BODY
 16. WHOLE BODY
 17. WHOLE BODY
 18. WHOLE BODY
 19. WHOLE BODY
 20. WHOLE BODY

Addendum B(6)