

71-9029

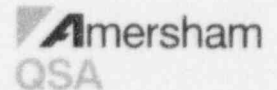
## SENTINEL

Amersham Corporation  
40 North Avenue  
Burlington, MA 01803

tel (617) 272-2000  
tel (800) 815-1383  
fax (617) 273-2216

10 October 1996

Bernie White  
Spent Fuel Project Office  
Office of Nuclear Material Safety and Safeguards  
United States Nuclear Regulatory Commission  
1 White Flint North  
11555 Rockville Pike  
Rockville, Maryland 20852



Reference Docket Number 71-9029

Dear Mr. White:

I have enclosed copies of the revised drawings for the model 676 depicting the weld.

Sincerely,

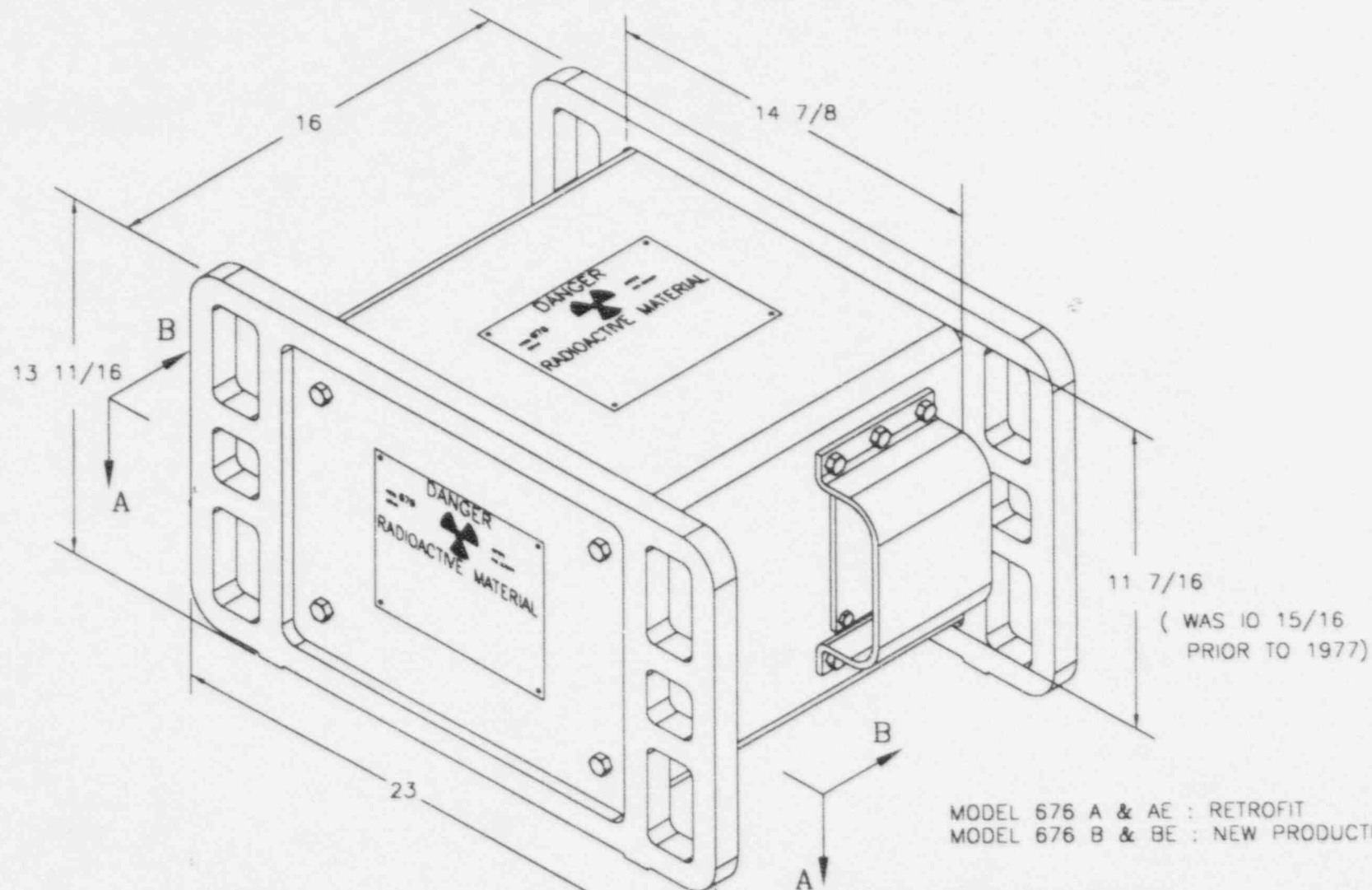
A handwritten signature in cursive script that reads 'Cathleen Roughan'.

Cathleen Roughan  
Regulatory Affairs Manager

NTOI/1

9611060319 961010  
PDR ADOCK 07109029  
C PDR

060089



MODEL 676 A & AE : RETROFIT  
MODEL 676 B & BE : NEW PRODUCTION

MAX. WEIGHT: 625 LBS

UNLESS OTHERWISE SPECIFIED:

ALL DIMENSIONS ARE INCHES AND REFERENCE

**SENTINEL**

DESCRIPTIVE  
DRAWING

Amersham Corporation  
40 NORTH AVE, BURLINGTON, MA 01803

TITLE MODEL 676 PROJECTOR

SIZE A DWG. NO. R 67690

SCALE: NONE

SHEET 1 OF 5

REV  
D

CLARIFIED DATES ON SHT. 2 DCR #656  
ADDED ASME CODE REF. ON SHT. 5

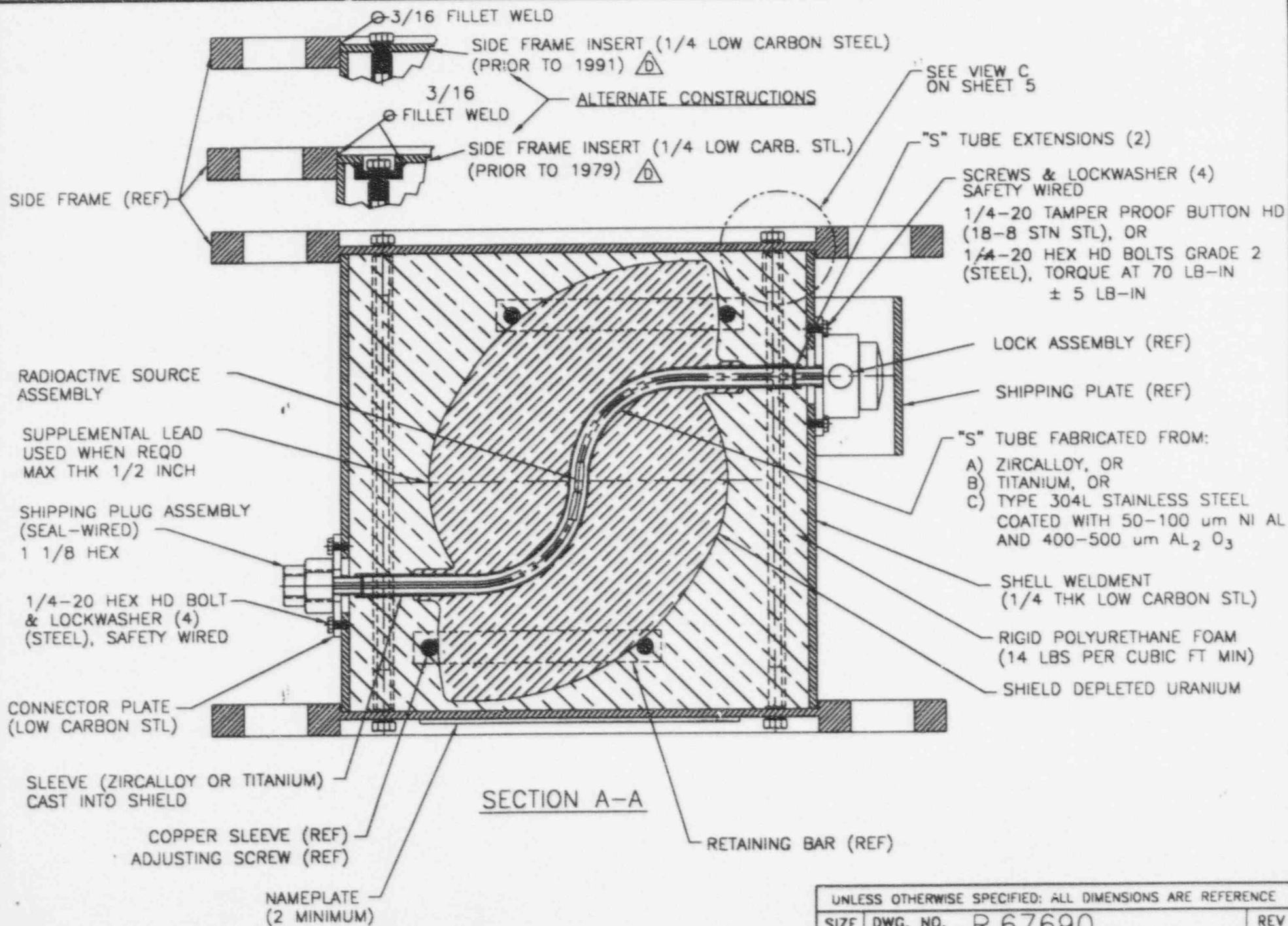
APPROVALS

DATE

LTR

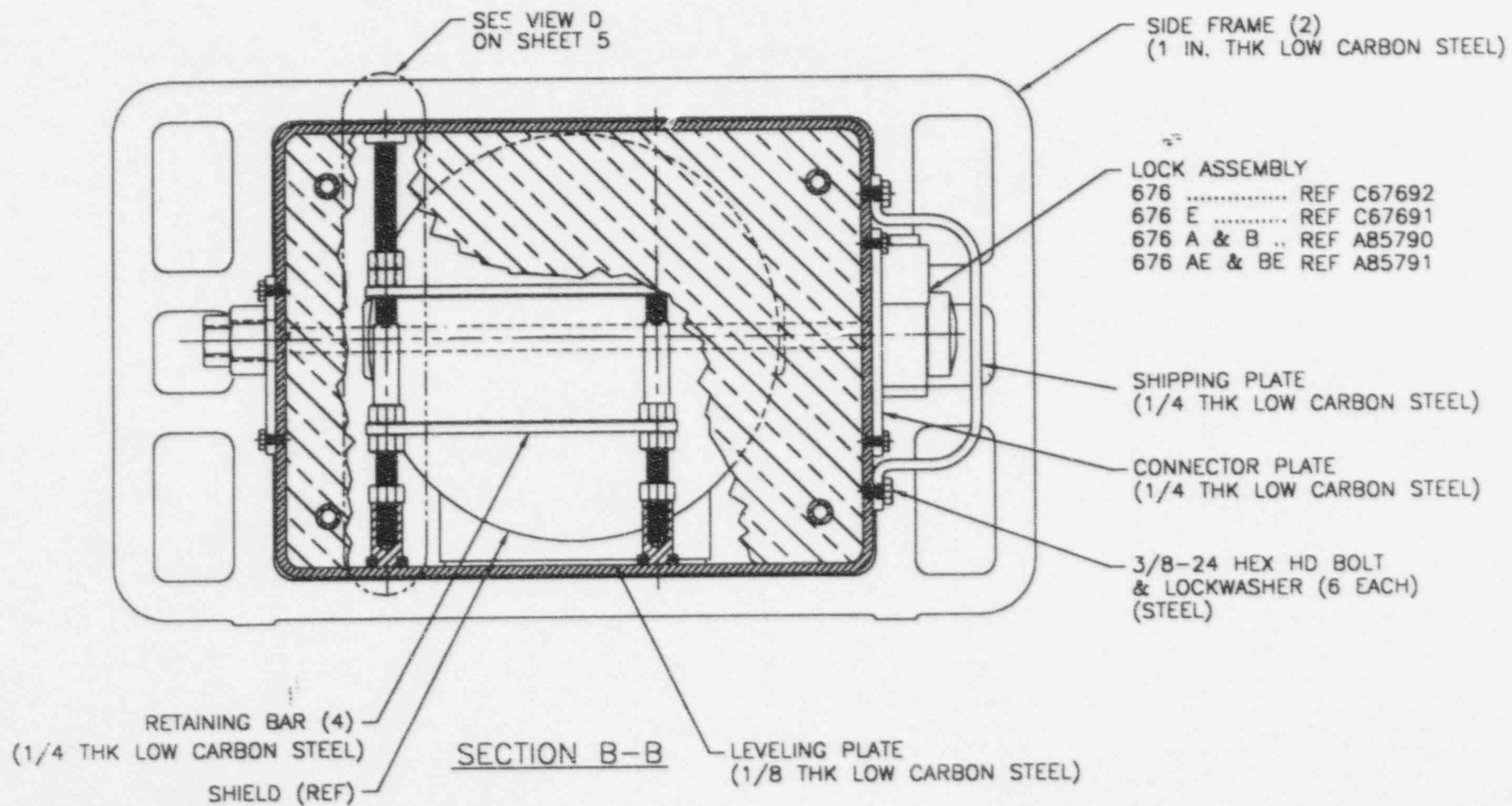
DESCRIPTION

REVISIONS



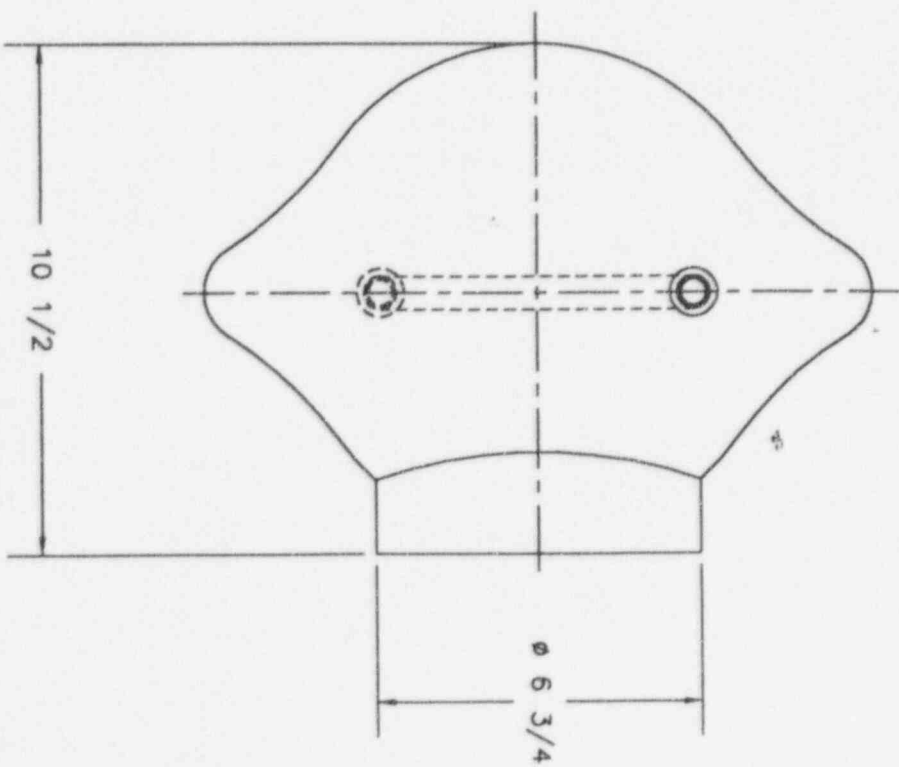
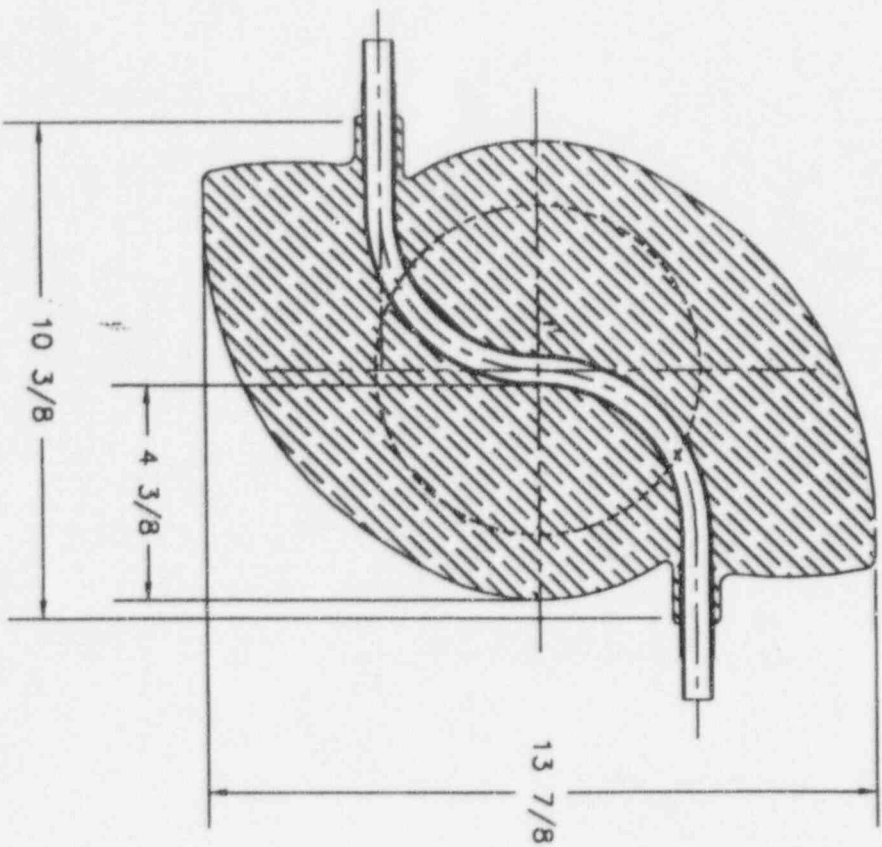
UNLESS OTHERWISE SPECIFIED: ALL DIMENSIONS ARE REFERENCE

SIZE	DWG. NO.	R 67690	REV
A	SCALE:	NONE	D
		SHEET 2 OF 5	



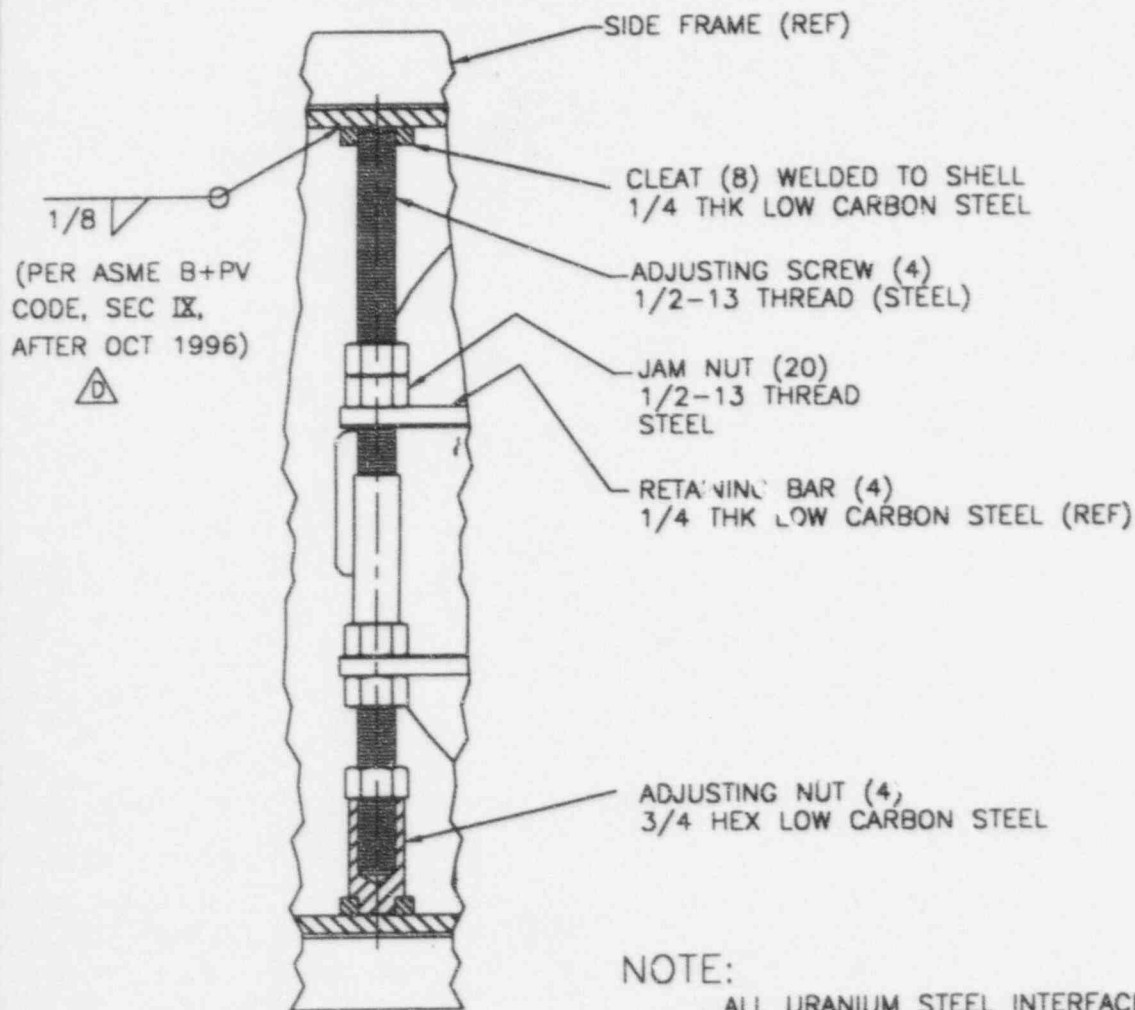
UNLESS OTHERWISE SPECIFIED: ALL DIMENSIONS ARE REFERENCE

SIZE	DWG. NO.	REV
A	R 67690	D
SCALE: NONE		SHEET 3 OF 5

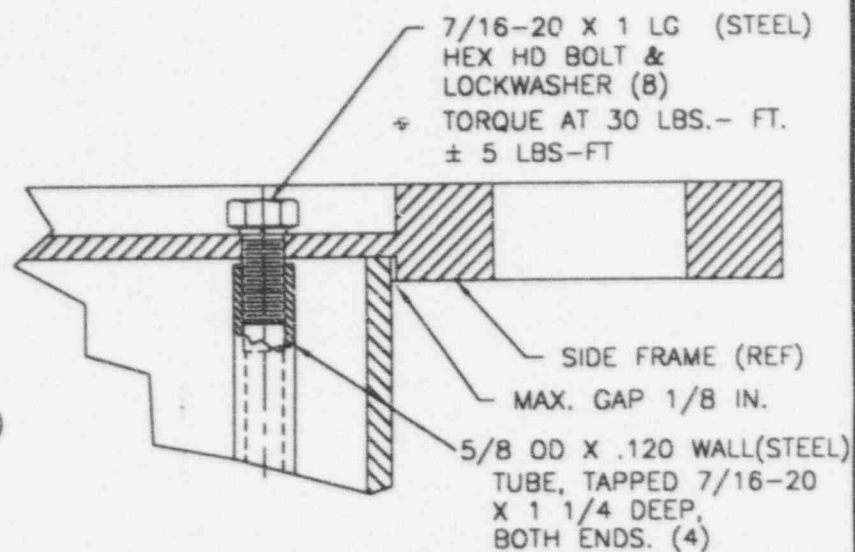


SHIELD DATA  
 APPROX WEIGHT: 425 LBS  
 (WEIGHT AS NEEDED FOR SATISFACTORY  
 COMPLETION OF RADIATION PROFILE)

UNLESS OTHERWISE SPECIFIED: ALL DIMENSIONS ARE REFERENCE			
SIZE	DWG. NO.	REV	
A	R 67690	D	
SCALE:	NONE	SHEET	4 OF 5



VIEW D



VIEW C

NOTE:

ALL URANIUM STEEL INTERFACES HAVE  
BEEN SHIMMED WITH COPPER.

UNLESS OTHERWISE SPECIFIED: ALL DIMENSIONS ARE REFERENCE

SIZE	DWG. NO.	REV
A	R 67690	D
SCALE: NONE		SHEET 5 OF 5