



A Centerior Energy Company

EDISON PLAZA  
300 MADISON AVENUE  
TOLEDO, OHIO 43652-0001

September 16, 1996

Ms. Elizabeth Wick, Group Leader  
Ohio Environmental Protection Agency  
Northwest District Office  
347 North Dunbridge Road  
Bowling Green, Ohio 43402

Dear Ms. Wick:

Subject: Submittal of the August 1996 Telecommunicated Hardcopy Wastewater Report

Attached is a hardcopy of the telecommunicated August 1996 Wastewater Report for the Davis-Besse Nuclear Power Station (DBNPS), Unit Number 1, Permit Number 2IB00011\*FD.

If you have any questions, please contact Mr. James L. Freels, Manager - Regulatory Affairs, at (419) 321-8466.

Sincerely yours,

James H. Lash  
Plant Manager  
Davis-Besse Nuclear Power Station

TKW/lkm

Attachments

cc: Z. A. Clayton, Ohio Environmental Protection Agency  
U. S. Nuclear Regulatory Commission Document Control Desk

9610010353 960831  
PDR ADOCK 05000346  
R PDR

Y1  
Iers

TOLEDO EDISON/DAVIS-BESSE

2IB00011001 AUG 1996

1 1 09/05/96 2IB0001

300 MADISON AV. MSTOP 2101 001 DISCHARGE TO LAKE ERIE  
TOLEDO 43652 OTTAWA

FORM

TOLEDO EDISON

T. WASCH

1 999	3 001	1 999	3 001	2 003
WATER TEMP. F	PH S.U.	CONDUIT FLOW MGD	CHLORINE TOT RE MG/L	COPPER TOT RE UG/L

00011	00400	50050	50060	01119
-------	-------	-------	-------	-------

01	74.2	8.7	28.4	AA
02	75.1	8.7	28.5	AA
03	76.2	AN	30.0	AN
04	77.3	AN	22.9	AN
05	78.6	8.6	22.9	AA
06	80.2	8.7	22.9	AA
07	81.2	8.7	22.9	AA
08	80.7	8.7	22.9	AA
09	78.3	8.7	22.9	AA
10	77.4	AN	22.9	AN
11	76.6	AN	22.9	AN
12	76.3	8.5	22.9	AA
13	77.3	8.6	22.9	AA
14	78.7	8.6	22.9	AA
15	78.8	8.7	22.9	AA
16	76.4	8.7	22.9	AA
17	76.3	AN	22.9	AN
18	76.5	AN	22.9	AN
19	77.5	8.6	22.9	AA
20	78.7	8.7	22.9	AA
21	78.4	8.6	22.9	AA
22	80.0	8.6	22.9	AA
23	79.5	8.6	22.9	AA
24	77.7	AN	15.9	AN
25	78.0	AN	15.9	AN
26	77.9	8.6	17.2	AA
27	78.4	8.7	23.0	AA AA
28	77.9	8.7	25.8	AA
29	77.4	8.7	25.2	AA
30	77.2	8.6	25.4	AA
31	77.1	AN	27.4	AN

2411.8	190.30	720.70	AA	AA
77.800	8.6500	23.248	AA	AA
81.200	8.7000	30.000	AA	AA
74.200	8.5000	15.900	AA	AA

AA: The total residual chlorine detection limit is 0.05 mg/L  
and the copper detection limit is 20 ug/L.

REPORTER

00116106

*St. Frank* 9/16/96 Plant Manager

2IB00011001



TOLEDO EDISON/DAVIS-BESSE

2IB00011002 AUG 1996

1 1 09/05/96 2IB0001

300 MADISON AV. MSTOP 2101 002 OUTFALL TOUSSAINT RIVER  
TOLEDO 43652 OTTAWA

FORM

TOLEDO EDISON

T. WASCH

3	3	3	1	2	2	2
001	001	001	999	003	003	003
PH	RESIDU	OIL GR	CONDUI	COPPER	MERCUR	ZINC
S.U.	TOT NF	TOTAL	FLOW	TOT RE	TOT RE	TOT RE
	MG/L	MG/L	MGD	UG/L	UG/L	UG/L
00400	00530	00550	50050	01119	99992	01094
01	AH	AH	AH			
02			AH			
03			AH			
04			AH			
05			AH			
06			AH			
07	8.2	5	.068			
08		2	.068			
09			.068			
10			.068			
11			.068			
12			.068			
13			.063			
14	7.9	3	.068			
15		AA	.068			
16			.068			
17			.068			
18			.068			
19			.068			
20			.152			
21	7.8	5	.110			
22		AA	.068			
23			.068			
24			.068			
25			.068			
26	7.8		.068			
27			.068	AA	AA	AA
28		5	.068			
29			.068			
30		3	.068			
31			.068			
	31.700	18.000	5.0000	1.8260	AA	AA
	7.9250	4.5000	1.2500	0.0730	AA	AA
	8.2000	5.0000	3.0000	0.1520	AA	AA
	7.8000	3.0000	AA	0.0680	AA	AA

AH: No flow; discharge gate closed 8/1/96 through 8/6/96.  
AA: The detection limits are 1.0 mg/L for Oil and Grease,  
20 ug/L for copper and zinc, and 0.2 ug/L for mercury.

REPORTER

09/16/96

*St. Lash* 9/16/96 PLANT MANAGER

2IB00011002



TOLEDO EDISON/DAVIS-BESSE

2IB00011003 AUG 1996

1 1 09/05/96 2IB0001

300 MADISON AV. MSTOP 2101 003 OUTFALL NAVARRE MARSH  
TOLEDO 43652 OTTAWA

FORM

TOLEDO EDISON

T. WASCH

3 1  
001 999RESIDU CONDUI  
TOT NF FLOW  
MG/L MGD

00530 50050

01	.222
02	.222
03	.222
04	.222
05	.222
06	.222
07	.222
08	.222
09	.222
10	.222
11	.222
12	.222
13	.222
14	.222
15	.222
16	.222
17	.222
18	.222
19	.222
20	.222
21	.222
22	.222
23	.222
24	.222
25	.222
26	.222
27	.222
28	.222
29	.222
30	.222
31	.222

66.000	6.8820
66.000	0.2220
66.000	0.2220
66.000	0.2220



TOLEDO EDISON/DAVIS-BESSE

2IB00011601 AUG 1996

1 1 09/05/96 2IB0001

300 MADISON AV. MSTOP 2101 601 DISCHARGE STP  
TOLEDO 43652 OTTAWA

FORM

## TOLEDO EDISON

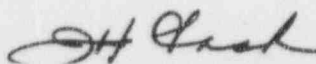
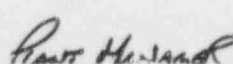
T. WASCH

	3 001	3 001	3 001	3 001	3 001	3 001	3 001
	COLOR SEVERI UNITS	ODOR SEVERI UNITS	TURBID SEVERI UNITS	CONDUI FLOW MGD	BOD 5 DAY MG/L	RESIDU TOT NF MG/L	CHLORI TOT RE MG/L
	00083	01330	01350	50050	00310	00530	50060
01	1	0	1	.019		15	AA
02	1	0	1	.019			
03	AN	AN	AN	.023			
04	AN	AN	AN	.023			
05	1	0	1	.023			
06	2	0	1	.018	7		
07	1	0	1	.018		11	
08	2	0	1	.021			AA
09	2	0	1	.022			
10	AN	AN	AN	.021			
11	AN	AN	AN	.022			
12	1	0	1	.024			
13	1	0	1	.024	7		
14	1	0	1	.015		11	
15	1	0	1	.015			
16	2	2	2	.021			AA
17	AN	AN	AN	.021			
18	AN	AN	AN	.021			
19	1	2	1	.008			AA
20	1	2	1	.008	9		
21	1	1	1	.022		10	
22	1	2	1	.023			
23	1	3	1	.022			
24	AN	AN	AN	.023			
25	AN	AN	AN	.022			
26	1	2	1	.018			AA
27	1	3	2	.017	10		
28	1	3	1	.017		13	
29	1	3	1	.017			
30	1	2	1	.018			
31	AN	AN	AN	.019			
	26.000	25.000	24.000	0.6040	33.000	60.000	AA
	1.1818	1.1364	1.0909	0.0195	8.2500	12.000	AA
	2.0000	3.0000	2.0000	0.0240	10.000	15.000	AA
	1.0000	0.0000	1.0000	0.0080	7.0000	10.000	AA

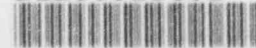
AA: The total chlorine detection limit is 0.05 mg/L.

REPORTER

09/16/96

 9/16/96
 

2IB00011601



TOLEDO EDISON/DAVIS-BESSE

2IB00011602 AUG 1996

1 1 09/05/96 2IB0001

300 MADISON AV. MSTOP 2101 602 LOW VOLUME WW SETTLING BASIN OVERFLOW  
TOLEDO 43652 OTTAWA

FORM

TOLEDO EDISON

T. WASCH

	1 999	3 001	3 001
	CONDUIT FLOW MGD	RESIDU TOT NF MG/L	OIL GR TOTAL MG/L
	50050	00530	00550
01	.233		
02	.233		
03	.233		
04	.233		
05	.233		
06	.233		
07	.233	2	
08	.233		1
09	.233		
10	.233		
11	.233		
12	.233		
13	.233		
14	.233		
15	.233		
16	.233		
17	.233		
18	.233		
19	.233		
20	.233		
21	.233	AA	
22	.233		AA
23	.233		
24	.233		
25	.233		
26	.233		
27	.233		
28	.233	6	
29	.233		
30	.233		2
31	.233		
	7.2230	8.0000	3.0000
	0.2330	2.6667	1.0000
	0.2330	6.0000	2.0000
	0.2330	AA	AA

AA: The detection limit is 1.0 mg/L for both Total Suspended Solids and Oil and Grease.

REPORTER

09/16/96

*H. Chal* 9/16/96 Plant Manager

2IB00011602



TOLEDO EDISON/DAVIS-BESSE

2IB00011801 AUG 1996

1 1 09/05/96 2IB0001

300 MADISON AV. MSTOP 2101 801 INTAKE PRIOR COOLING OPERATION  
TOLEDO 43652 OTTAWA

FORM

TOLEDO EDISON

T. WASCH

1  
999WATER  
TEMP.  
F

00011

01	72.4
02	72.6
03	73.3
04	74.7
05	75.4
06	75.7
07	76.4
08	77.1
09	77.3
10	76.9
11	75.8
12	74.9
13	74.6
14	75.0
15	76.0
16	75.5
17	74.8
18	74.8
19	75.2
20	75.3
21	75.8
22	76.3
23	76.9
24	76.2
25	76.3
26	76.0
27	76.3
28	76.1
29	75.9
30	75.5
31	75.9

2340.9  
75.513  
77.300  
72.400

REPORTER

09/16/96

*H. Gosh 9/16/96 RWT-MANAGER*

2IB00011801

