

GENERAL ELECTRIC

LEXAN PRODUCTS DIVISION

GENERAL ELECTRIC COMPANY • HIGHWAY 69 S • MT. VERNON, INDIANA 47620-9364 • (812) 838-7000

May 22, 1985

U.S. Nuclear Regulatory Commission
Region III - Material Licensing Section
799 Roosevelt Road
Glen Ellyn, IL 60137

SUBJECT: AMENDMENT TO LICENSE #13-10455-01

Please amend our NRC Radioactive Materials License No. 13-10455-01 to add the following:

- (1) Texas Nuclear Model 5205 source head containing Cs-137 in Texas Nuclear Model 696894 capsule with no single source to exceed 50 millicuries.
- (2) Texas Nuclear Model 5195 source head containing Cs-137 in Texas Nuclear Model 696-696833 capsule with no single source to exceed 20 millicuries.
- (3) Texas Nuclear Model 5195 source head containing Cs-137 in Texas Nuclear Model 696-696833 capsule with no single source to exceed 50 millicuries.

All nuclear devices are used to ascertain the process level within steel vessels. The nuclear source is placed close to the outside skin of the vessel and is directed through the vessel to a detector placed in similar mode, diagonally opposite the source.

Each cesium 137 source has a lockable safety shutter and is similar to those already in service in the plant. The mounting configuration and layout are shown in the attached drawings.

No operators, etc., will be continually in these areas.

All other conditions of licensure will remain the same.

Please find enclosed check in the amount of \$60.00 to cover amendment fee. Please contact me on any questions. Thanks for your assistance.

Applicant	<i>May 31/85</i>
Check No.	<i>31/85 \$60</i>
Amount	<i>30 paid</i>
Type of fee	<i>31/85</i>
Expiry date	<i>GP</i>
Received by	<i>GP</i>

Sincerely,

Jerry Uhde
Jerry Uhde
Manager, Safety

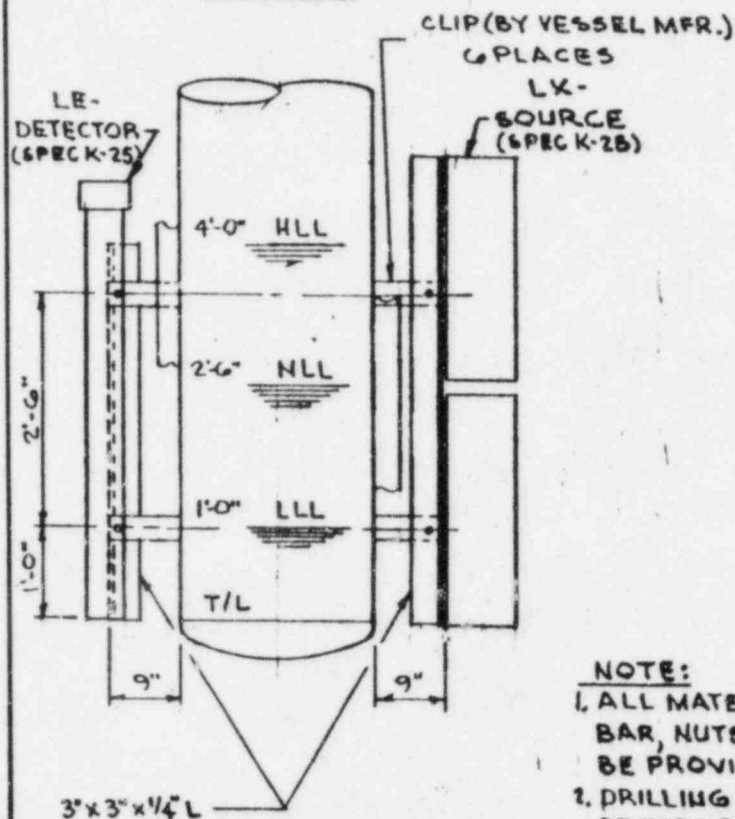
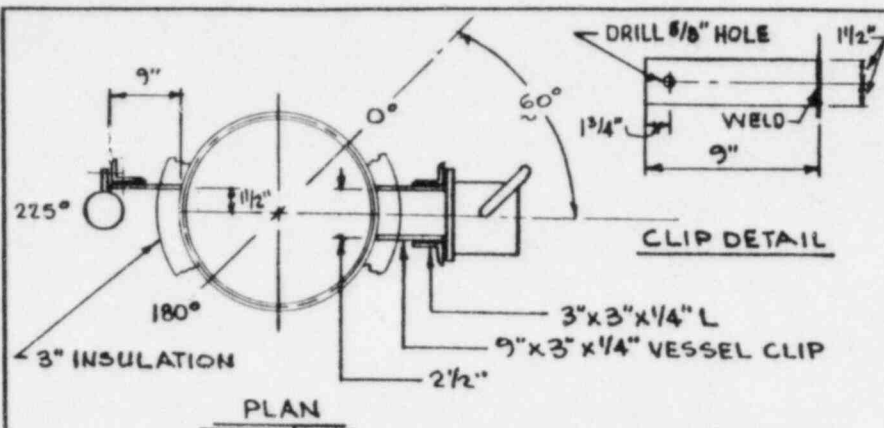
RECEIVED
MAY 28 1985
REGION III

JLU/bc

cc: Doris Bryan
Texas Nuclear Corp.
Ron Dunbar

8507150099 850619
REG3 LIC30
13-10455-01 PDR

MAY 28 1985
CONTROL NO. 7 9 0 3 4

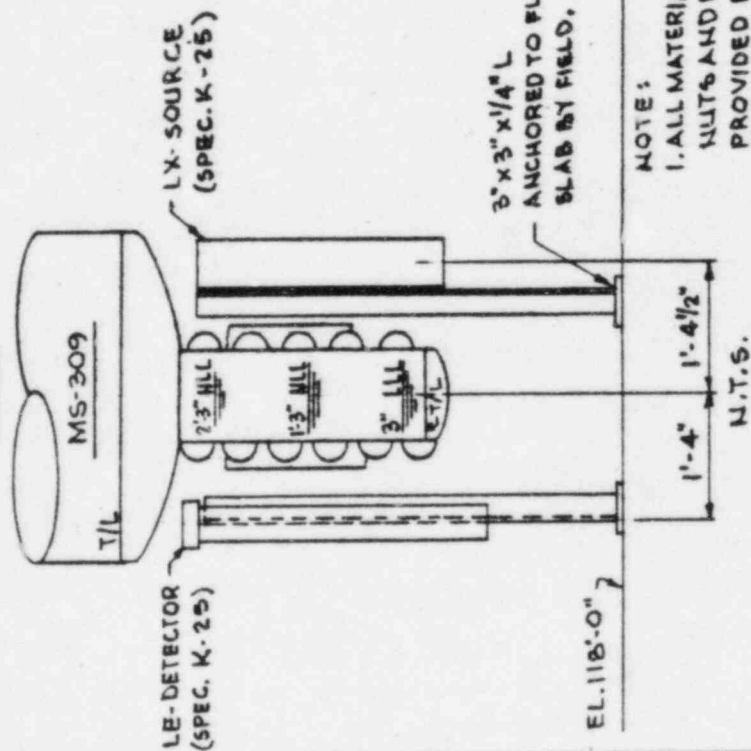


- NOTE:
1. ALL MATERIAL, ANGLE, FLAT BAR, NUTS & BOLTS TO BE PROVIDED BY FIELD.
2. DRILLING AND SETTING OF DEVICES BY FIELD.

[illegible][illegible]

							INSTRUMENT INSTALLATION NUCLEAR DETECTOR AND SOURCE								
I	JUL 80	HK	SUBCONTRACT SQ-010	R	m	75	PROJECT 2000								
ISSUE DATE BY PROJECTOR OF ISSUE CHECK APPR															
BADGER ENGINEERS, INC.															
(A Raytheon Company)															
THIS DOCUMENT CONTAINS PROPRIETARY INFORMATION BELONGING TO BADGER AMERICA, INC. AND SHALL NOT BE COPIED, REPRODUCED OR OTHERWISE USED, NOR SHALL SUCH INFORMATION BE FURNISHED IN WHOLE OR IN PART TO OTHERS, WITHOUT THE WRITTEN CONSENT OF ANY MANAGEMENT UNDER WHICH IT WAS SUPPLIED ON WITH THE PROPER WRITTEN CONSENT OF BADGER AMERICA, INC., AND SHALL BE RETURNED UPON REQUEST.															
		THIS DRAWING IS NOT TO BE USED FOR SUBSTITUTION THEREOF AND MAY HAVE NATIONAL UNLESS SAID AND SIGNED													
CERTIFIED	SCALE: _____ BY: [] TITLE: []														
DATED	DATE: [] DAY MONTH YEAR														
DWG. NO. E-0562-621-12 I															

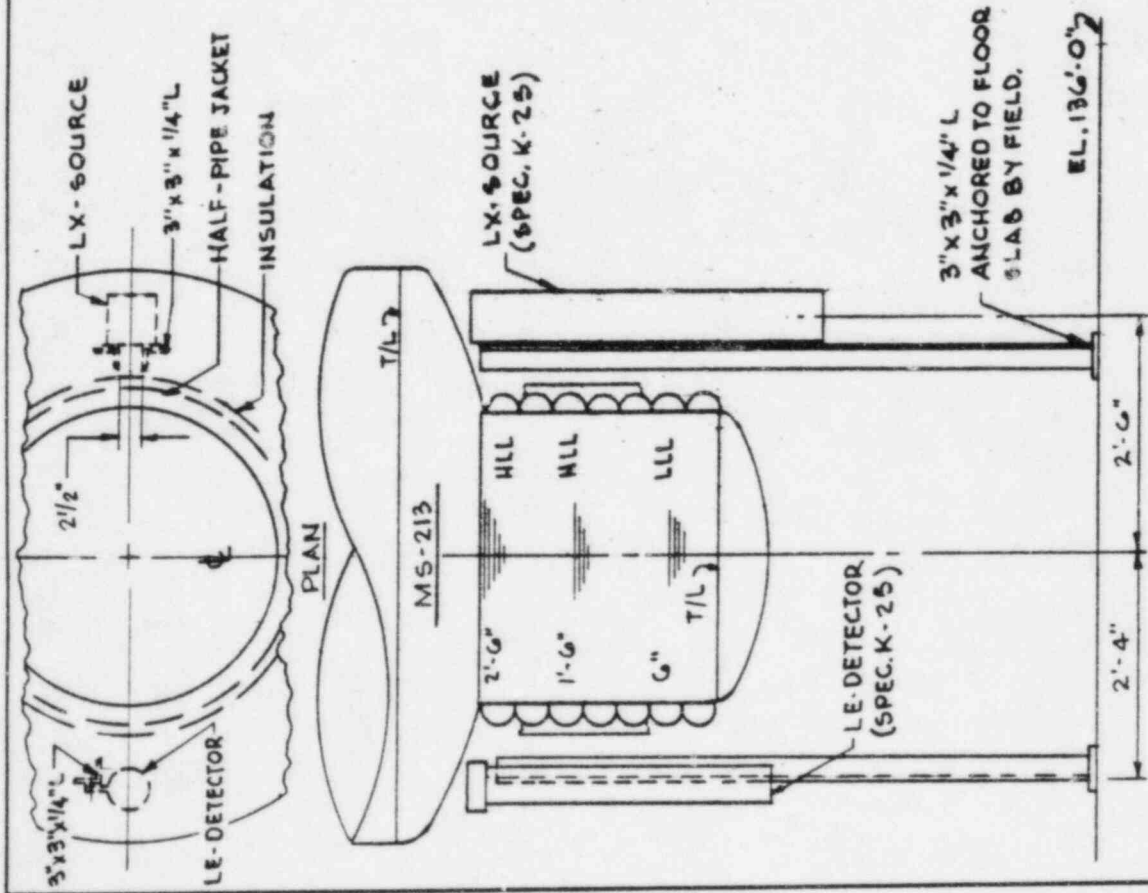
PLAN



NOTES:


1. ALL MATERIAL, ANGLE,
NUTS AND BOLTS TO BE
PROVIDED BY FIELD.
2. DRILLING AND SETTING OF
DEVICES BY FIELD.

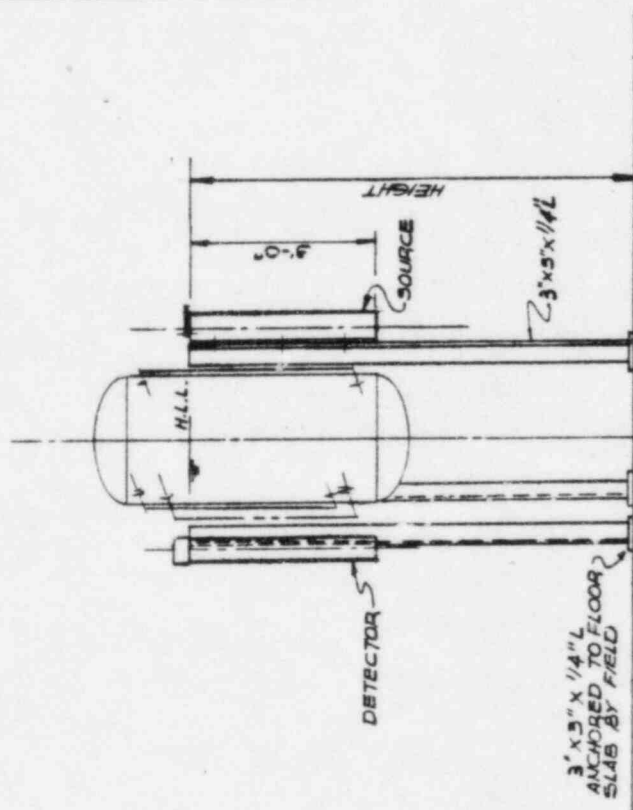
[illegible][illegible][illegible]



NOTE:
1. ALL MATERIAL, ANGLE, NUTS AND BOLTS,
TO BE PROVIDED BY FIELD.
2. DRILLING AND SETTING OF DEVICES BY FIELD.

[illegible][illegible]

INSTRUMENT INSTALLATION NUCLEAR DETECTOR AND SOURCE		PROJECT 2000		INDIANA	
		SCALE: _____ DATE: _____ CERTIFIED: _____ BY: _____ TITLE: _____ PROJECT NO. E-0552-621-15		ISSUE: I	
SUBCONTRACT SC-010-1/2		BADGER ENGINEERS, INC.		THIS INSTRUMENT CONTAINS INFORMATION RELAYED TO THE UNITED STATES GOVERNMENT BY THE NATIONAL AERONAUTICS AND SPACE ADMINISTRATION. IT IS NOT TO BE REPRODUCED OR TRANSMITTED IN ANY FORM OR BY ANY MEANS, ELECTRONIC OR MECHANICAL, INCLUDING PHOTOCOPYING, RECORDING, OR BY ANY INFORMATION STORAGE AND RETRIEVAL SYSTEM, WITHOUT PERMISSION IN WRITING FROM THE NATIONAL AERONAUTICS AND SPACE ADMINISTRATION.	
I		DATE: 11/18/78		BY: [Signature]	
REVISION: 1		DATE: 11/18/78		BY: [Signature]	

[illegible]INSTRUMENT INSTALLATION
NUCLEAR DETECTOR AND
SOURCE

PROJECT 2000

MT. VERNON

INDIANA

一、關於「社會主義」之解釋

RECEIVED	DATE	BY	TIME

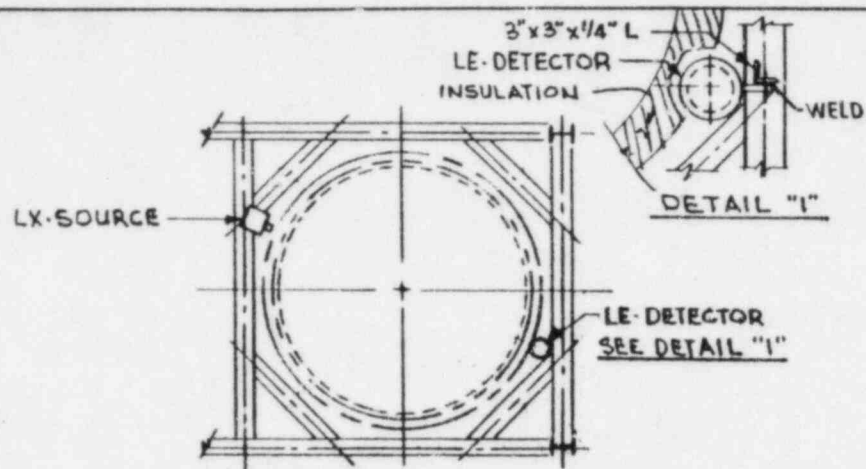
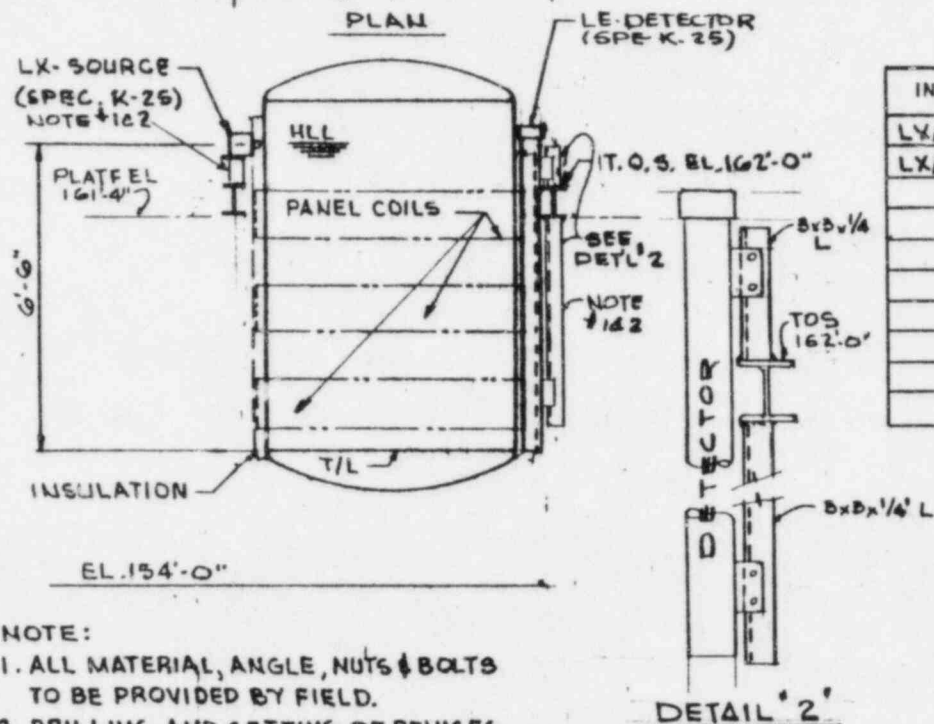
18 BLUE

DWG. NO. E-0557-621-16 I

[illegible]

BADGER ENGINEERS, INC.

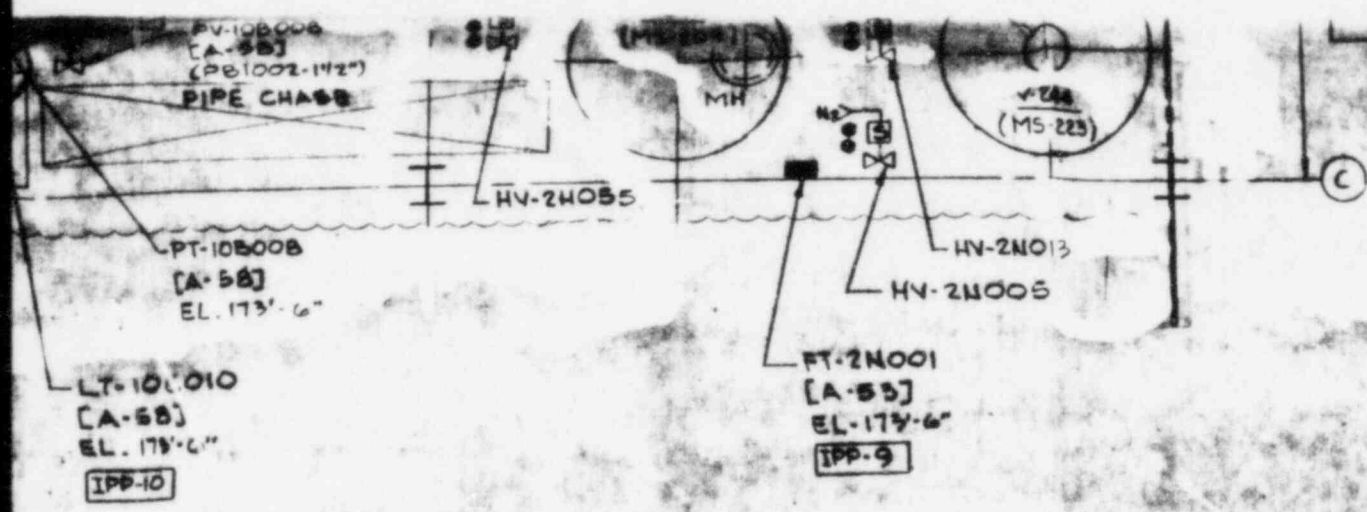
A Nordson Company

[illegible][illegible]

1. ALL MATERIAL, ANGLE, NUTS & BOLTS TO BE PROVIDED BY FIELD.
2. DRILLING AND SETTING OF DEVICES BY FIELD.

				<div style="font-size: 24px; font-weight: bold; margin-bottom: 10px;">INSTRUMENT INSTALLATION NUCLEAR DETECTOR AND SOURCE</div> <div style="font-size: 36px; font-weight: bold; margin-bottom: 10px;">PROJECT 2000</div> <div style="font-size: 24px; font-weight: bold; margin-bottom: 10px;">MT. VERNON</div> <div style="font-size: 24px; font-weight: bold; margin-bottom: 10px;">INDIANA</div>			
<div style="font-size: 24px; font-weight: bold;">I</div>	<div style="font-size: 24px; font-weight: bold;">4/1/82</div>	<div style="font-size: 24px; font-weight: bold;">1/8</div>	<div style="font-size: 24px; font-weight: bold;">SUBCONTRACT SC-010</div>			<div style="font-size: 24px; font-weight: bold;">1/8</div>	<div style="font-size: 24px; font-weight: bold;">1/8</div>
REV	DATE	BY	DESCRIPTION OF ISSUE			DATE	APPROV
<div style="font-size: 24px; font-weight: bold; margin-bottom: 10px;">BADGER ENGINEERS, INC.</div> <div style="border: 1px solid black; padding: 5px; display: inline-block; font-size: 12px;">a Raytheon Company</div>							
<div>THIS DOCUMENT CONTAINS PROPRIETARY INFORMATION BELONGING TO BADGER AMERICA, INC. AND SHALL NOT BE COPIED, REPRODUCED OR OTHERWISE USED, NOR SHALL SUCH INFORMATION BE FURNISHED IN WHOLE OR IN PART TO OTHERS, EXCEPT IN ACCORDANCE WITH THE TERMS OF ANY AGREEMENT UNDER WHICH IT WAS SUPPLIED OR WITH THE PRIOR WRITTEN CONSENT OF BADGER AMERICA, INC., AND SHALL BE RETURNED UPON REQUEST.</div>							

<div style="font-size: 48px; font-weight: bold; margin: 0 auto;">B</div>	<div>THIS DRAWING IS NOT TO BE USED FOR CONSTRUCTION AND NOT FOR SALE, UNLESS SPECIFICALLY NOTED OTHERWISE ON THIS DRAWING.</div>	<div>SCALE</div> <div>APPROVALS</div>
	<div>CERTIFIED</div>	<div>DR. NO. ENG. </div>
	<div>DATE</div>	<div></div>
	<div>ISSUED</div>	
DWG. NO. E-0552-621-17		



NOTE:
 1. FOR GENERAL NOTES, LEGENDS,
 SYMBOLS AND REFERENCE DRAWINGS
 SEE DRAWING E-0552-604-0.

FOR GENERAL ELECTRIC COMPANY PROJECT 2000			
INSTRUMENT LAYOUT PLAN @ 5TH FLOOR (EL. 169'-0") SOUTH PROCESS BUILDING MT VERNON INDIANA			
DESIGNED BY	HGE	DRAWN BY	SKED
CHECKED BY	HE	DATE	10/1/84

ISSUE	DATE	BY	DESCRIPTION OF ISSUE	CHK'D	APP'D
I	10/1/84	HGE	FOR SUBCONTRACTOR SC-010		
II	10/1/84	HGE	ADDED (21) INSTRUMENTS		
III	10/1/84	HGE	CERTIFIED		

BADGER ENGINEERS, INC.
 CAMBRIDGE, MASS.
 A Raytheon Company

THIS DOCUMENT CONTAINS PROPRIETARY INFORMATION BELONGING TO BADGER ENGINEERS, INC. OR ITS AFFILIATED COMPANIES AND SHALL BE USED ONLY FOR THE PURPOSE FOR WHICH IT WAS SUPPLIED. IT SHALL NOT BE COPIED, REPRODUCED OR OTHERWISE USED NOR SHALL SUCH INFORMATION BE FURNISHED IN WHOLE OR IN PART TO OTHERS EXCEPT IN ACCORDANCE WITH THE TERMS OF ANY AGREEMENT UNDER WHICH IT WAS SUPPLIED OR WITH THE PRIOR WRITTEN CONSENT OF BADGER ENGINEERS, INC. AND SHALL BE RETURNED UPON REQUEST.



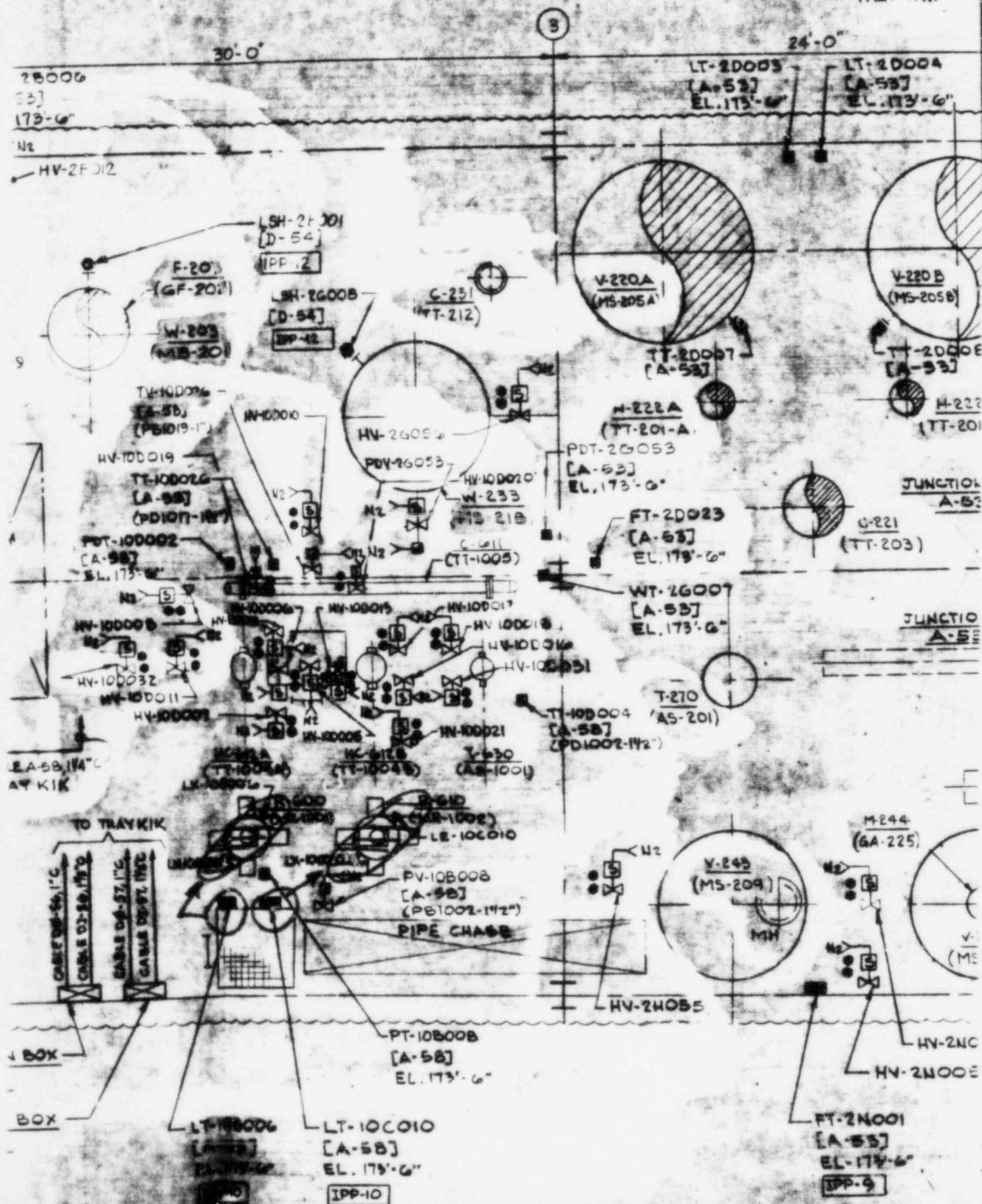
THIS DRAWING IS NOT TO BE USED FOR CONSTRUCTION OR FOR ORDERING MATERIAL UNLESS DATED AND SIGNED BY THE ENGINEER.

CERTIFIED: *[Signature]*
 DATE: 10/1/84

SCALE: 1/4" = 1'-0"

DWG. NO. E0552-604-9

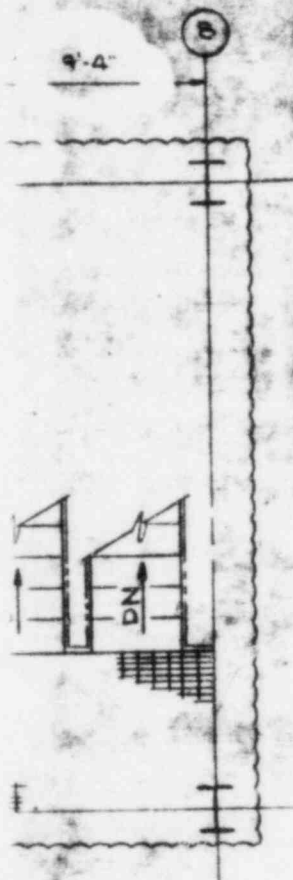
CABLE DØ-54
1°C
TRAY K1K



ON SMO

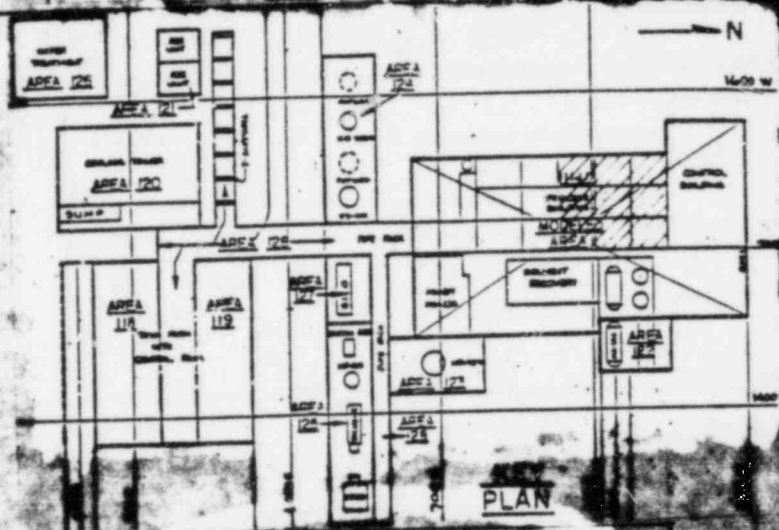
ITEM NO.	LOCATION	DEVICES ON VALVE	CONN. TO JUNCT. BOX
HY-100005	PD1017-11/2"	ZSH/L-100005	D-56
		HY-100005	D-56
HY-100006	PD1002-11/2"	ZSH/L-100006	D-56
		HY-100006	D-56
HY-100007	PD1003-1"	ZSH/L-100007	D-56
		HY-100007	D-56
HY-100008	WD1009-1"	ZSH/L-100008	D-56
		HY-100008	D-56
HY-100009	WD1011-1"	ZSH/L-100009	D-56
		HY-100009	D-56
HY-100010	SD1006-1"	ZSH/L-100010	D-56
		HY-100010	D-56
HY-100011	SD1007-1"	ZSH/L-100009	D-56
		HY-100011	D-56
HY-100015	PD1001-11/2"	ZSH/L-100015	D-56
		HY-100015	D-56
HY-100016	PD1004-11/2"	ZSH/L-100016	D-57
		HY-100016	D-57
HY-100017	PD1005-1"	ZSH/L-100017	D-57
		HY-100017	D-57
HY-100018	WD1019-1"	ZSH/L-100018	D-57
		HY-100018	D-57
HY-100019	WD1015-1"	ZSH/L-100019	D-57
		HY-100019	D-57
HY-100020	SD1012-1"	ZSH/L-100020	D-57
		HY-100020	D-57
HY-100021	CD1013-1"	ZSH/L-100021	D-57
		HY-100021	D-57
HY-100031	CD1021-1"	ZSH/L-100031	D-57
		HY-100031	D-57
HY-100032	CD1020-1"	ZSH/L-100032	D-57
		HY-100032	D-57

CONTROL NO. 79034



CYCLONE SEPARATOR
W/E X-560
(65-535)

SURGE BIN
W/E X-560
(65-535)



ITEM NO.	LOCATION	DEVICES ON VALVE	CORN. JUNCT.
PV-5B010A	NB517-2"	PV-5B010A (LP) PV-5B010B (SOL) ZSH/L-5B010A	A-41 D-42 D-42
PV-5B010B	VC515-2"	PV-5B010C (LP) PV-5B010D (SOL) ZSH/L-5B010B	A-41 D-42 D-42
HV-5B016	PB502-8"	HV-5B016 ZSH/L-5B016	D-42 D-42
HV-5B020	PB504-3"	HV-5B020 ZSH/L-5B020	D-42 D-42
HV-5B024	OB512-2"	HV-5B024 ZSH/L-5B024	D-42 D-42
HV-5B079	PB504-3"	HV-5B079 ZSH/L-5B079	D-42 D-42
HV-5B086	MM-551	ZSH/L-5B086	D-43
HV-5C001	PC502-2"	HV-5C001 ZSH/L-5C001	D-43 D-43
HV-5C002	PC501-2"	HV-5C002 ZSH/L-5C002	D-43 D-43
HV-5C014	PC503-2"	HV-5C014 ZSH/L-5C014	D-43 D-43
HV-5B078	PB502-8"	HV-5B078 ZSH/L-5B078	D-43 D-43

NOTE:
1. FOR GENERAL NOTES, LEGENDS,
SYMBOLS AND REFERENCE DRAWINGS
SEE DRAWING E-0592-604-0.

5B116

(41)

150'-6"

N2

HV-5B014

FUTURE

W-5B079

W-5B086

W-516

(MS-551)

SIGNAL FROM

1.5-5B086

STRIPPER

FUTURE

W-5B008

W-5B014

CO12

(1)

58'-6"

PV-5B010B

46002

(41)

1'-9"-1 1/2"

WIDER

C-411

(TT405)

24'-0"

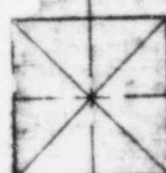
9'-4"

N2

PV-5B043

(A-41)

(PD507-1 1/2")



ACCESS HATCH

FOR L-540

(GE-509)

N2

PV-5B013

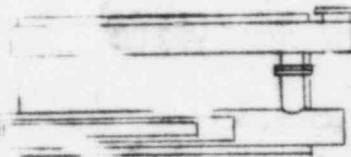
(A-41)

(VD570-1 1/2")

ACCESS HATCH

FOR L-530

(GE-549)



J-544

(PE-519)

LV-5B029

(A-41)

(PD553-1 1/2")



V-1040

(MS-608)

CYCLONE SEPARATOR

W/E X-560

(GS-535)



SURGE BIN

W/E X-560

(GS-535)

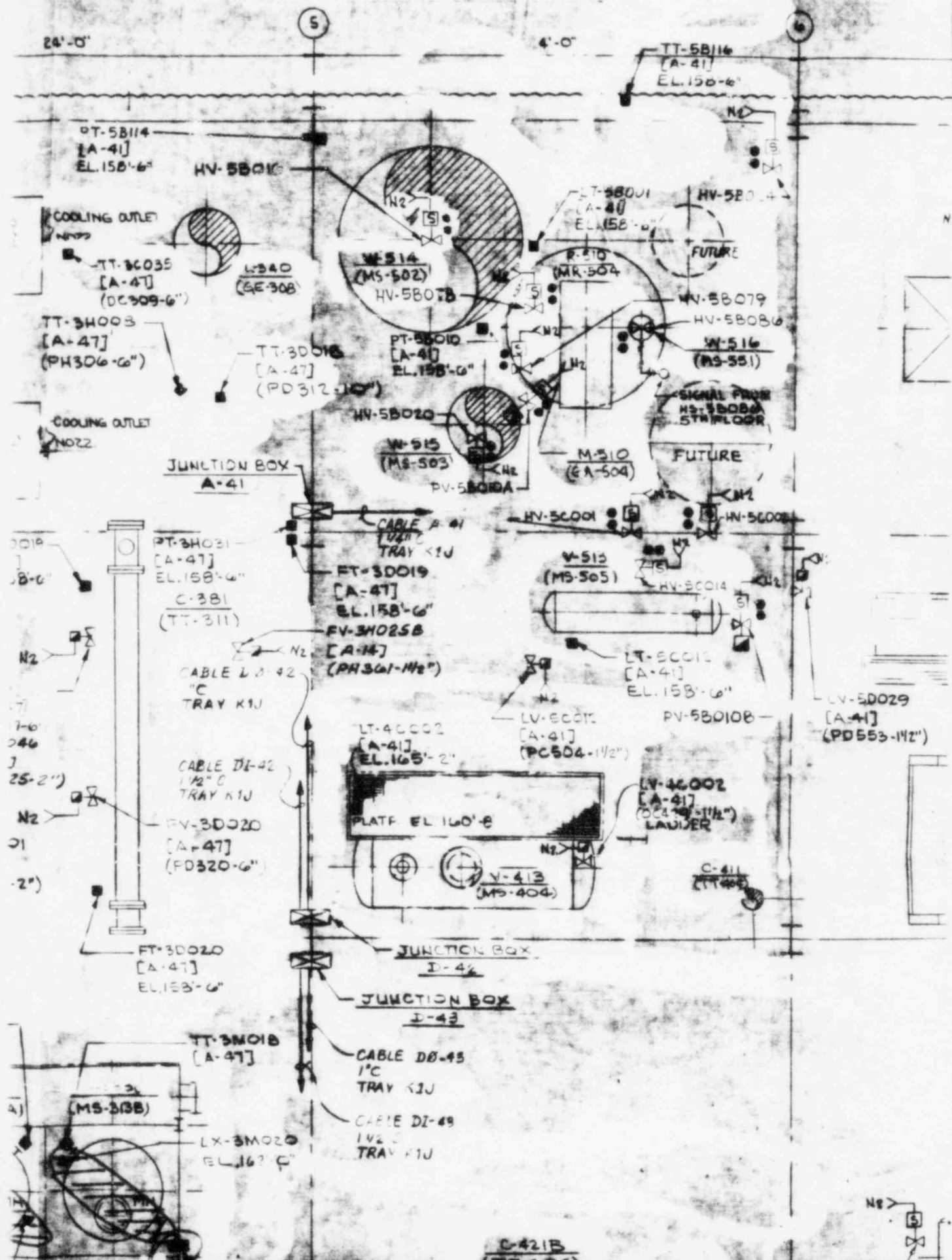
PIPE

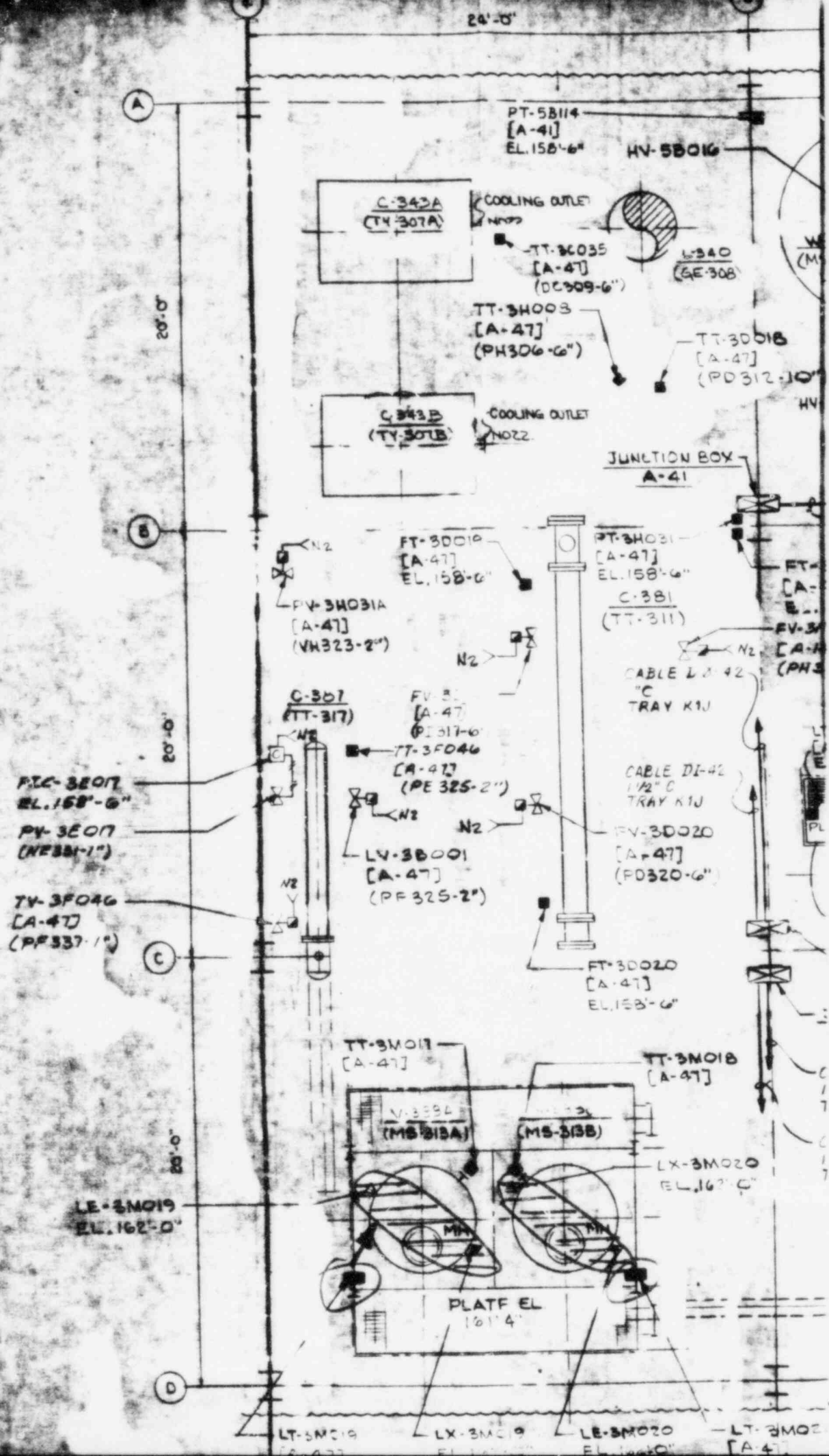
CHASE

N2

GJ-310

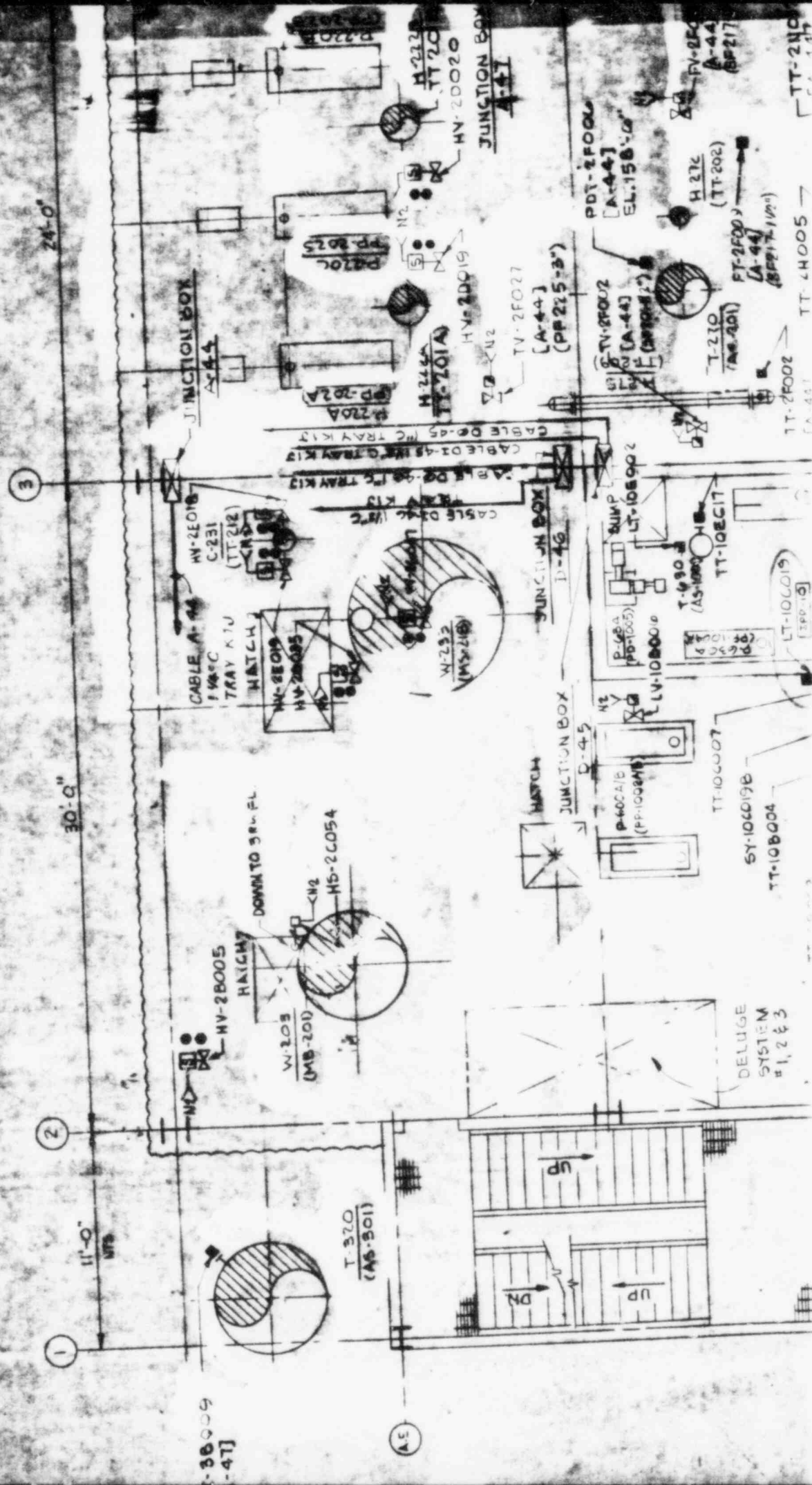
CONTROL NO. 79037







KUR-BEN



The floor plan of the FBI Laboratory is a complex layout with various rooms and areas. The central area is labeled 'FBI LABORATORY' and is divided by a diagonal line. To the left of this central area is a 'RECEIVING AREA' and a 'STORAGE AREA'. To the right is a 'STORAGE AREA' and a 'RECEIVING AREA'. The plan also shows a 'STORAGE AREA' at the bottom right and a 'STORAGE AREA' at the top right. A north arrow is located in the bottom left corner.

LY-10B006	R-600 (MR-1001)	-	LC-101
LY-10B006	PS1009-1"	LY-10B006	A-48
TT-10B015	PS1014-3"	-	LC-101
TY-10B015	PS1014-3"	LY-10B015	A-48
PT-10B015	158'-6"	-	LC-101
TT-10C001	R-610 (MR-1002)	-	LC-101
TT-10C008	R-610 (MR-1002)	-	LC-101
TT-10C009	R-610 (MR-1002)	-	LC-101
LY-10C010	PS1005-1"	LY-10C010	A-48
LT-10E019	158'-6"	-	A-48
SY-10E019A	P-620A (PD-1005A)	-	A-48
SY-10E019B	P-620B (PD-1005B)	-	A-48
LT-10E002	158'-6"	-	A-48
LY-10E002	PS1001-1"	LY-10E002	A-48
AT-10E012	158'-6"	-	A-48
TT-10E017	T-430 (AS-1001)	-	A-48
PT-10A009	158'-6"	-	A-48
PV-10A009	SA1014-1"	PV-10A009	A-48

FORM D-108 GD 2-60

CONTROL NO. 79034

ITEM NO.	LOCATION OR ELEVATION	DEVICES ON VALVE	CONN. TO JUNCT. BOX
PT-10A001	158'-6"	-	A-48
TT-10A002	PA 1011-1"	-	A-48
PT-10A003	PA 1012-1"	-	A-48
PT-10A003	PA 1012-1"	PT-10A003 (177) PY-10A003 (101)	A-48 LC-101
NY-10A003	PA 1012-1"	NY-10A003	LC-101
TT-10A004	PA 1013-1"	-	A-48
PT-10A005	PA 1013-1"	PY-10A005 (177) PY-10A005 (101)	A-48 LC-101
NY-10A005	PA 1013-1"	NY-10A005	LC-101
LT-10A014	H-604 (TT-1009)	-	A-48
LY-10A014	PS 705-1/2"	LY-10A014 (177) LY-10A014 (101)	A-48 LC-101
LY-10A014	H-604 (TT-1009)	(CONTACT #1) (CONTACT #2)	LC-101 D-56
PT-10A016	PA 101-1/2"	-	A-48
PY-10A016A	P-605A (PD-1001A)	-	A-48
PY-10A016B	R-605B (PD-1001B)	-	A-48
TT-10B003	R-603 (MR-1001)	-	LC-101
TT-10B004	R-600 (MR-1001)	-	LC-101
TT-10B005	R-600 (MR-1001)	-	LC-101
LY-10B006	PS 1009-1"	LY-10B006	A-48
PT-10B015	PS 1014-3"	-	LC-101
TY-10B015	PS 1014-3"	LY-10B015	A-48
PT-10B015	PS 1014-3"	-	LC-101
TT-10C007	R-610 (MR-1002)	-	LC-101
TT-10C008	R-610 (MR-1002)	-	LC-101
TT-10C009	R-610 (MR-1002)	-	LC-101
LY-10C010	P-1005-1"	LY-10C010	A-48
LT-10C010	158'-6"	-	A-48

DOCUMENT/ PAGE PULLED

ANO. 8507150099

NO. OF PAGES 1

REASON

☐ PAGE ILLEGIBLE:

☐ HARD COPY FILED AT: PDR CF

OTHER _____

☐ BETTER COPY REQUESTED ON ____/____/____

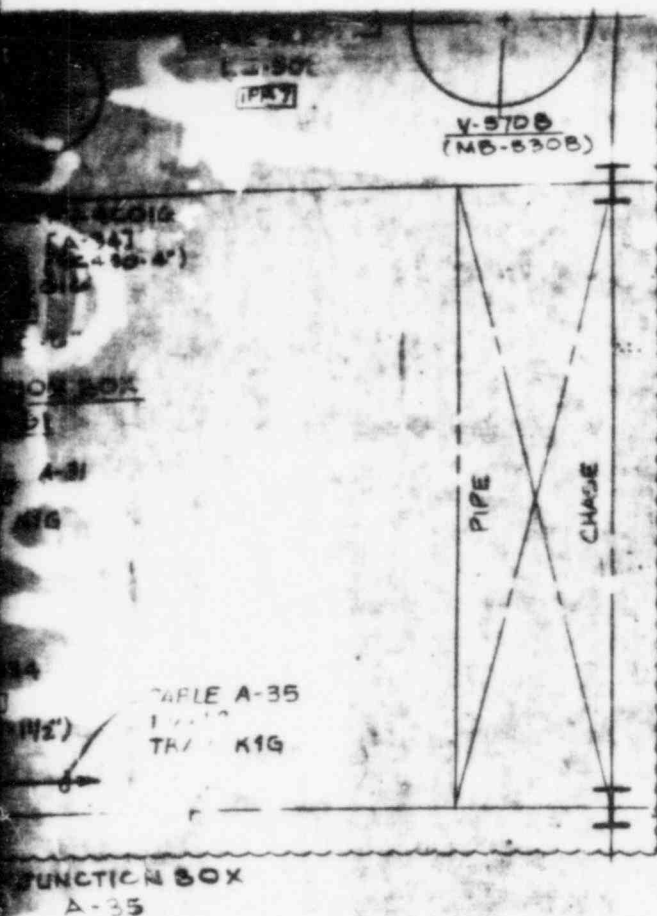
☐ PAGE TOO LARGE TO FILM.

☒ HARD COPY FILED AT: PDR CF

OTHER Reg 3

☒ FILMED ON APERTURE CARD NO.

8507150099-01



NOTE:
FOR GENERAL NOTES, LEGENDS,
SYMBOLS AND REFERENCE DRAWINGS
SEE DRAWING E-0552-604-0.

FOR GENERAL ELECTRIC COMPANY
PROJECT 2000

INSTRUMENT LAYOUT

PLAN @ 3RD FLOOR (EL. 136'-0") NORTH
PROCESS BUILDING

MT. VERNON

INDIANA

BADGER ENGINEERS, INC.

CAMBRIDGE, MASS.

A Raytheon Company

THIS DOCUMENT CONTAINS PROPRIETARY INFORMATION BELONGING TO BADGER ENGINEERS, INC. OR ITS AFFILIATED COMPANIES AND SHALL BE USED ONLY FOR THE PURPOSE FOR WHICH IT WAS SUPPLIED. IT SHALL NOT BE COPIED, REPRODUCED OR OTHERWISE USED NOR SHALL SUCH INFORMATION BE FURNISHED IN WHOLE OR IN PART TO OTHERS EXCEPT IN ACCORDANCE WITH THE TERMS OF ANY AGREEMENT UNDER WHICH IT WAS SUPPLIED OR WITH THE PRIOR WRITTEN CONSENT OF BADGER ENGINEERS, INC. AND SHALL BE RETURNED UPON REQUEST.



THIS DRAWING IS NOT TO BE USED FOR CONSTRUCTION OR FOR ORDERING MATERIAL UNLESS IT IS APPROVED BY THE ENGINEER.

CERTIFIED

DATE

SCALE: 1/4" = 1'-0"

APPROVALS

DR. ENL. ENGR.

DATE

DWG. NO. E0552-604-0

IV

NO.	DATE	BY	DESCRIPTION OF ISSUE	CHKD.	APPD.
1	1/14/64	MT	CERTIFIED		
2	1/14/64	MT	ADDED(S) INSTR'S & DELETED(S)		
3	1/14/64	MT	FOR SUBMITTAL		

DESIGNED BY H.C.

DRAWN BY

CHECKED BY H.C.

10

11

12

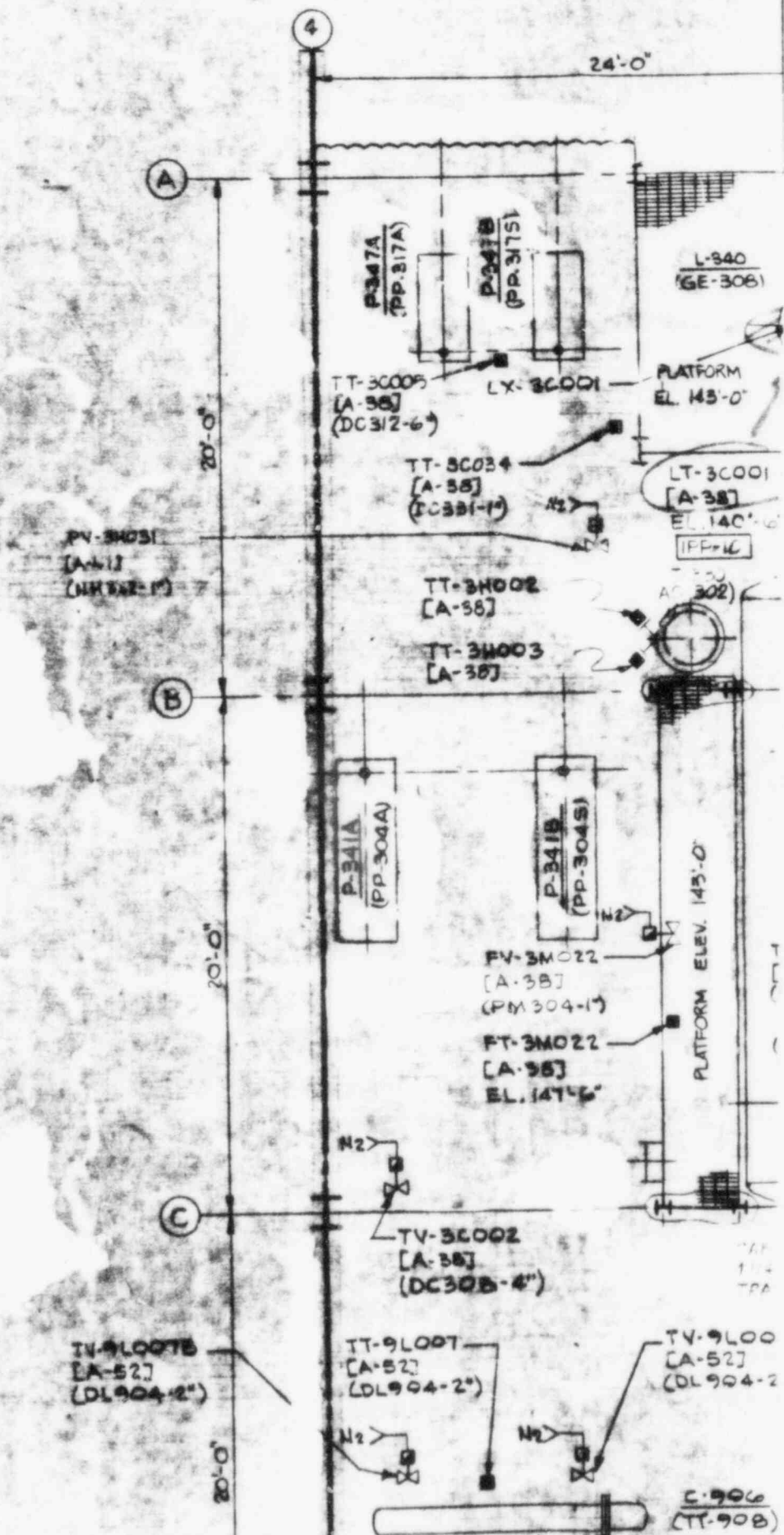
13

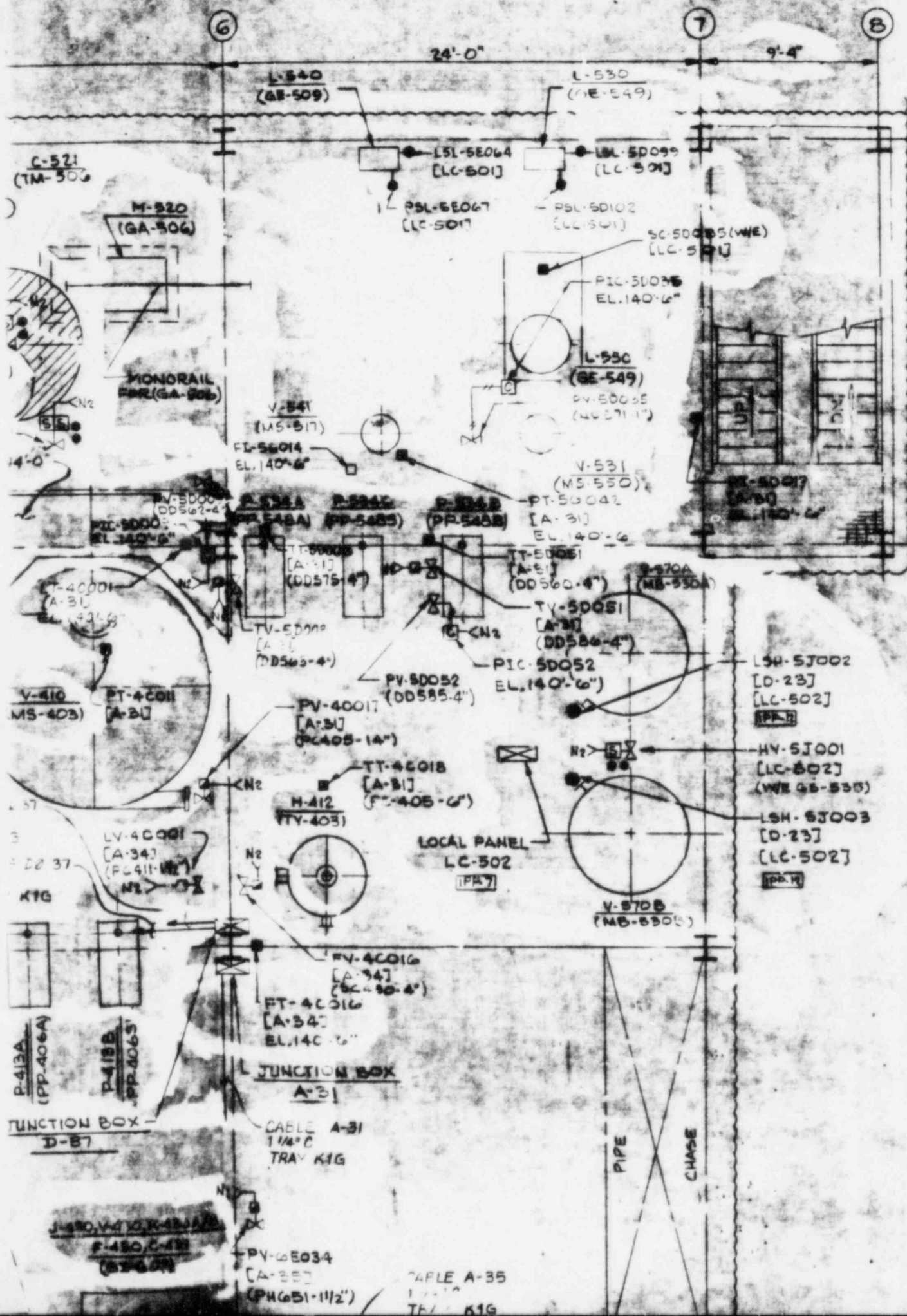
14

15

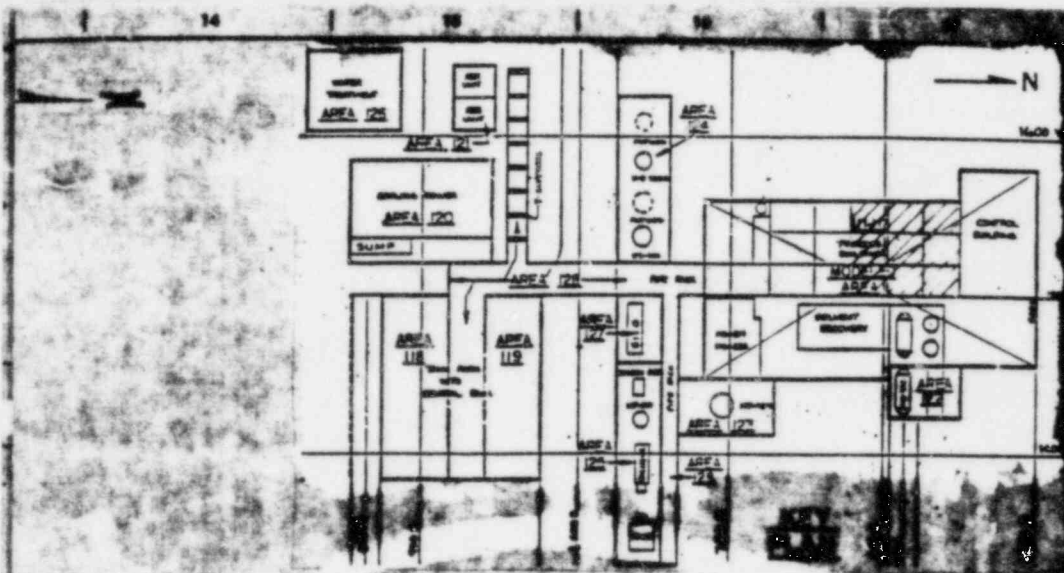
16

17



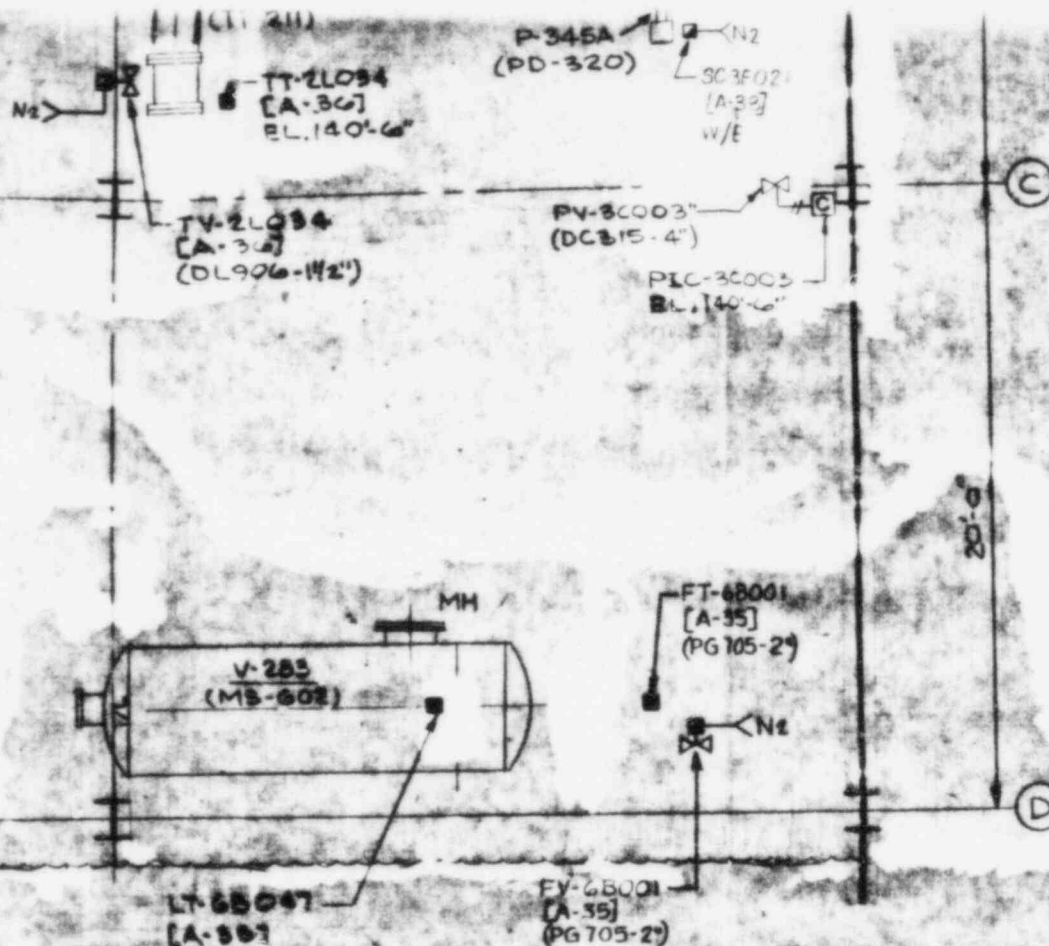


CONTROL NO. 9034



ITEM NO.	LOCATION	DEVICES ON VALVE	CONNL TO JUNCT BOX
HY-5812C	CS-521 - 2"	HY-58190X/Y ZSH/L-58120	D-57 D-57
HY-58027	PD-503 - 4"	HY-58027 ZSH/L-58027	D-57 D-57
HY-57001	GS-535 (W/E)	ZSH/L-57001	D-37 LC-502

NOTE:
FOR GENERAL NOTES, LEGENDS,
SYMBOLS AND REFERENCE DRAWINGS
SEE DRAWING E-0552-604-0.



NOTE:
1. FOR GENERAL NOTES, LEGENDS,
SYMBOLS AND REFERENCE DRAWINGS
SEE DRAWING E-0552-604-C.

FOR GENERAL ELECTRIC COMPANY
PROJECT 2000

INSTRUMENT LAYOUT

PLAN @ 3RD FLOOR (136'-0") SOUTH
PROCESS BUILDING

MT VERNON

INDIANA

BADGER ENGINEERS, INC.

CAMBRIDGE, MASS.

A Raytheon Company

THIS DOCUMENT CONTAINS PROPRIETARY INFORMATION BELONGING TO BADGER ENGINEERS, INC. OR ITS AFFILIATED COMPANIES AND SHALL BE USED ONLY FOR THE PURPOSE FOR WHICH IT WAS SUPPLIED. IT SHALL NOT BE COPIED, REPRODUCED OR OTHERWISE USED FOR ANY OTHER PURPOSE WITHOUT THE WRITTEN CONSENT OF BADGER ENGINEERS, INC. AND SHALL BE RETURNED UPON REQUEST.



THIS DRAWING IS NOT TO BE USED FOR CONSTRUCTION OR FOR ORDERING MATERIALS WITHOUT THE REGULAR SUPERVISOR'S APPROVAL.

CERTIFIED

DATE 2/28/66

SCALE: 1/4" = 1'-0"

APPROVED

OR. RM. SECT.

DATE 2/28/66

DATE 2/28/66

DWG. NO E0552-604-S

ISSUE

IV

III	CERTIFIED	4
II	ADDED (2) INSTRUMENTS	4
I	FOR SUB-CONTRACTOR 9C-010	4
ISSUED	DATE	BY

DESIGNED BY H. Cn.

DRAWN BY

CHECKED BY

10

11

12

13

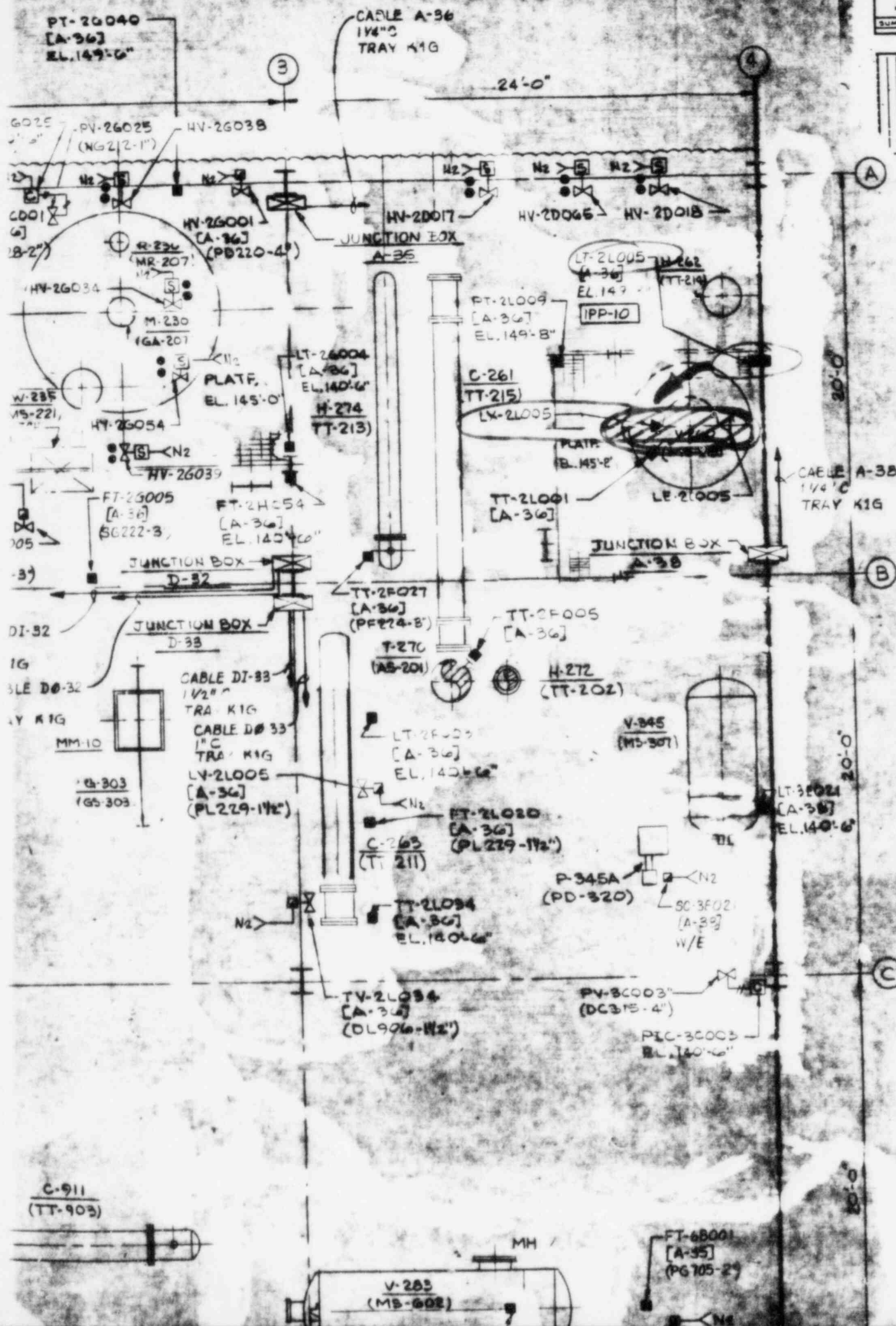
14

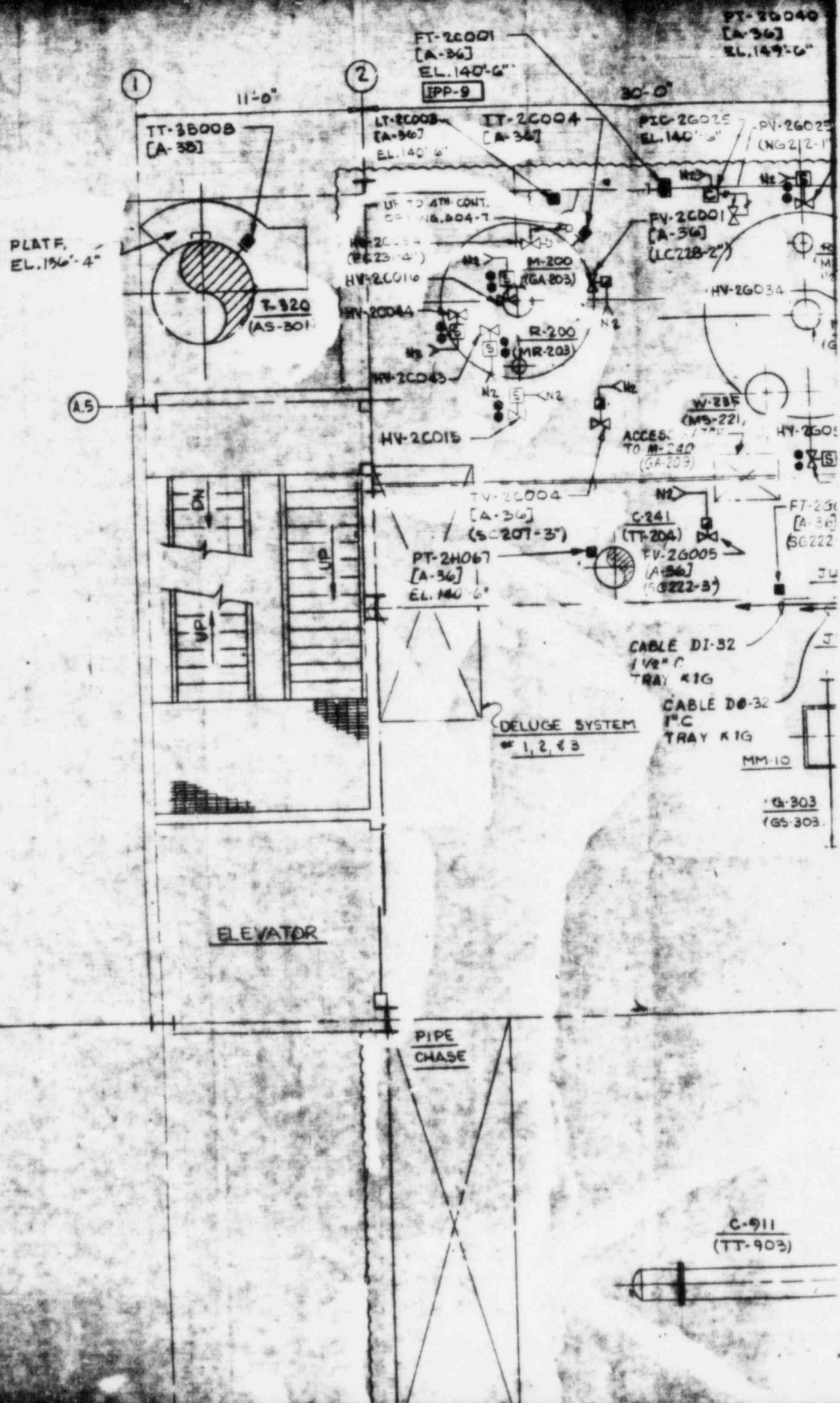
15

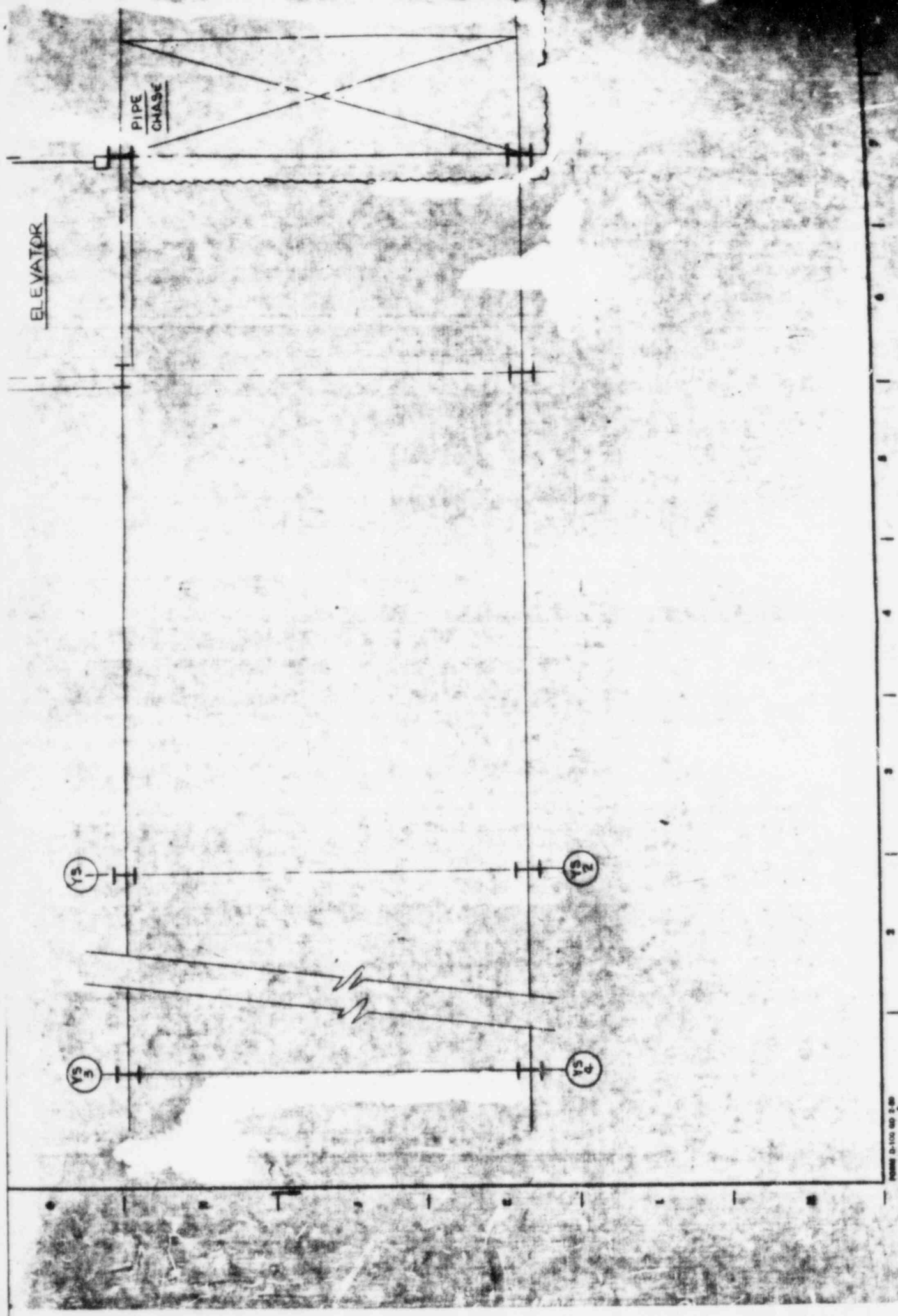
16

17

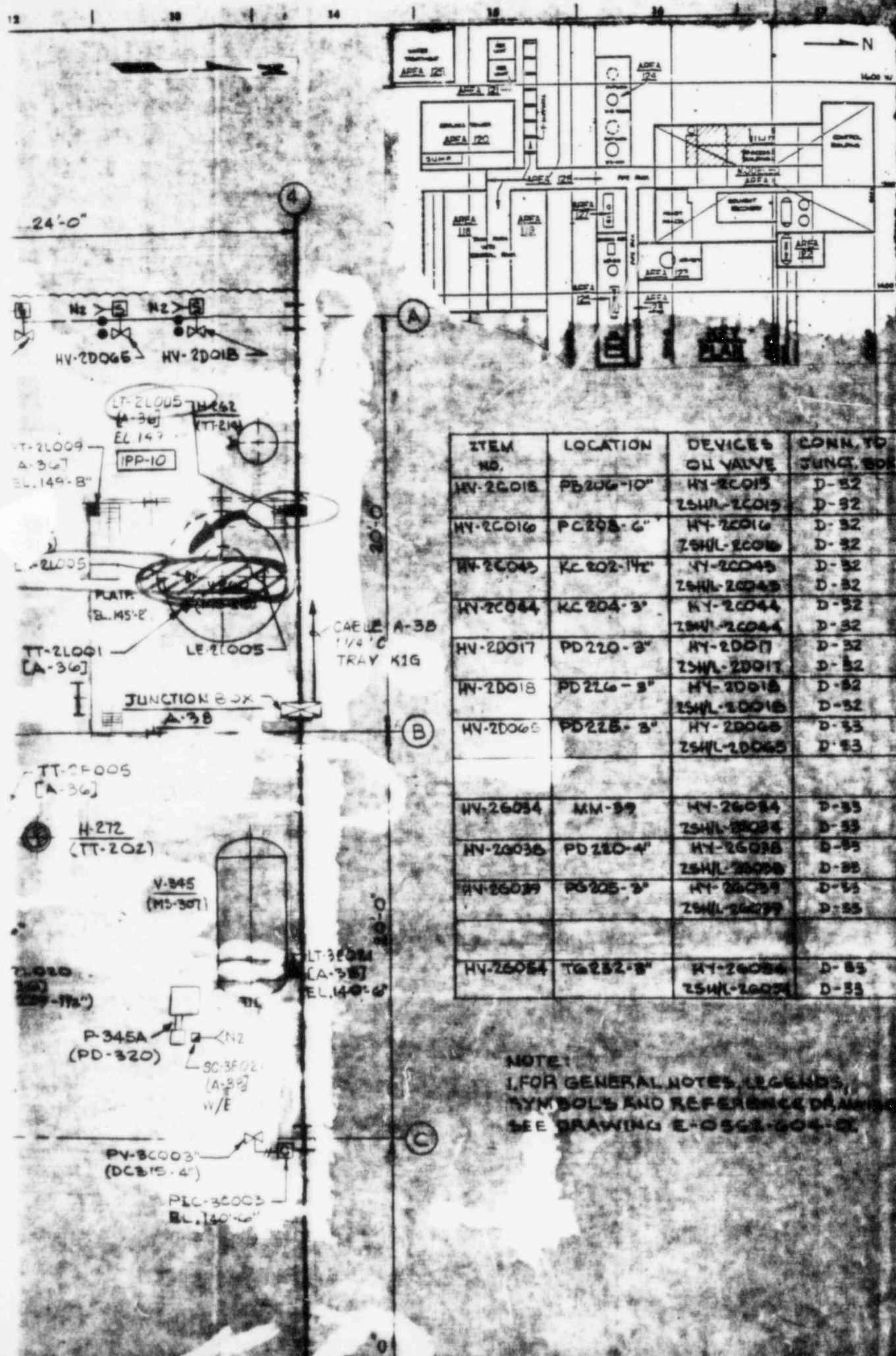
CONTROL NO. 79034







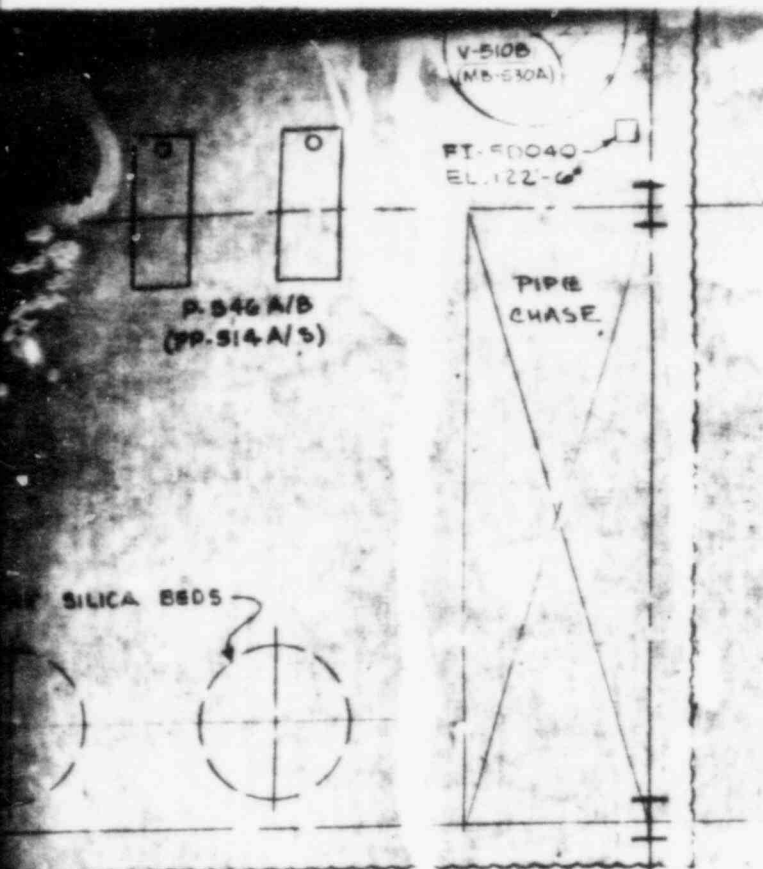
CONTROL NO. 7 9034



ITEM NO.	LOCATION	DEVICES OR VALVE	CONN. TO JUNCT. BOX
HV-20015	PD206-10"	HY-20015 ZSHL-20015	D-32 D-32
HV-20016	PC205-6"	HY-20016 ZSHL-20016	D-32 D-32
HV-20043	KC202-14"	HY-20043 ZSHL-20043	D-32 D-32
HV-20044	KC204-3"	HY-20044 ZSHL-20044	D-32 D-32
HV-20017	PD220-3"	HY-20017 ZSHL-20017	D-32 D-32
HV-20018	PD226-3"	HY-20018 ZSHL-20018	D-32 D-32
HV-20065	PD225-3"	HY-20065 ZSHL-20065	D-33 D-33
HV-26034	MM-59	HY-26034 ZSHL-26034	D-33 D-33
HV-26036	PD210-4"	HY-26036 ZSHL-26036	D-33 D-33
HV-26039	PD205-3"	HY-26039 ZSHL-26039	D-33 D-33
HV-26054	TG252-8"	HY-26054 ZSHL-26054	D-33 D-33

NOTE:
1. FOR GENERAL NOTES, LEGENDS,
SYMBOLS AND REFERENCE DRAWINGS
SEE DRAWING E-0552-604-C.

CONTROL NO. 79084



NOTE:
FOR GENERAL NOTES, LEGENDS,
SYMBOLS AND REFERENCE DRAWINGS
SEE DRAWING E-0552-604-0.

FOR GENERAL ELECTRIC COMPANY
PROJECT 2000

INSTRUMENT LAYOUT
PLAN @ 2ND FLOOR (EL. 118'-0") NORTH
PROCESS BUILDING

MT. VERNON

INDIANA

BADGER ENGINEERS, INC.

CAMBRIDGE, MASS.

A Registered Company

THIS DOCUMENT CONTAINS PROPRIETARY INFORMATION BELONGING TO BADGER ENGINEERS, INC. OR ITS AFFILIATED COMPANIES AND SHALL BE USED ONLY FOR THE PURPOSE FOR WHICH IT WAS SUPPLIED. IT SHALL NOT BE COPIED, REPRODUCED OR OTHERWISE USED NOR SHALL SUCH INFORMATION BE FURNISHED IN WHOLE OR IN PART TO OTHERS EXCEPT IN ACCORDANCE WITH THE TERMS OF ANY AGREEMENT UNDER WHICH IT WAS SUPPLIED OR WITH THE PRIOR WRITTEN CONSENT OF BADGER ENGINEERS, INC. AND SHALL BE RETURNED UPON REQUEST.



THIS DRAWING IS NOT TO BE USED FOR CONSTRUCTION OR FOR ORDERING MATERIAL UNLESS DATED AND SIGNED.

CERTIFIED *[Signature]*
DATE 3/29/49

SCALE: 1/4" = 1'-0"

APPROVALS
CM ENGR

DWG. NO. E0552-604-4

IV

DESIGNED BY	MT. VERNON	DRAWN BY	GREEN	CHECKED BY	11
DESCRIPTION OF ISSUE		CHG'D	APPD		

10

11

12

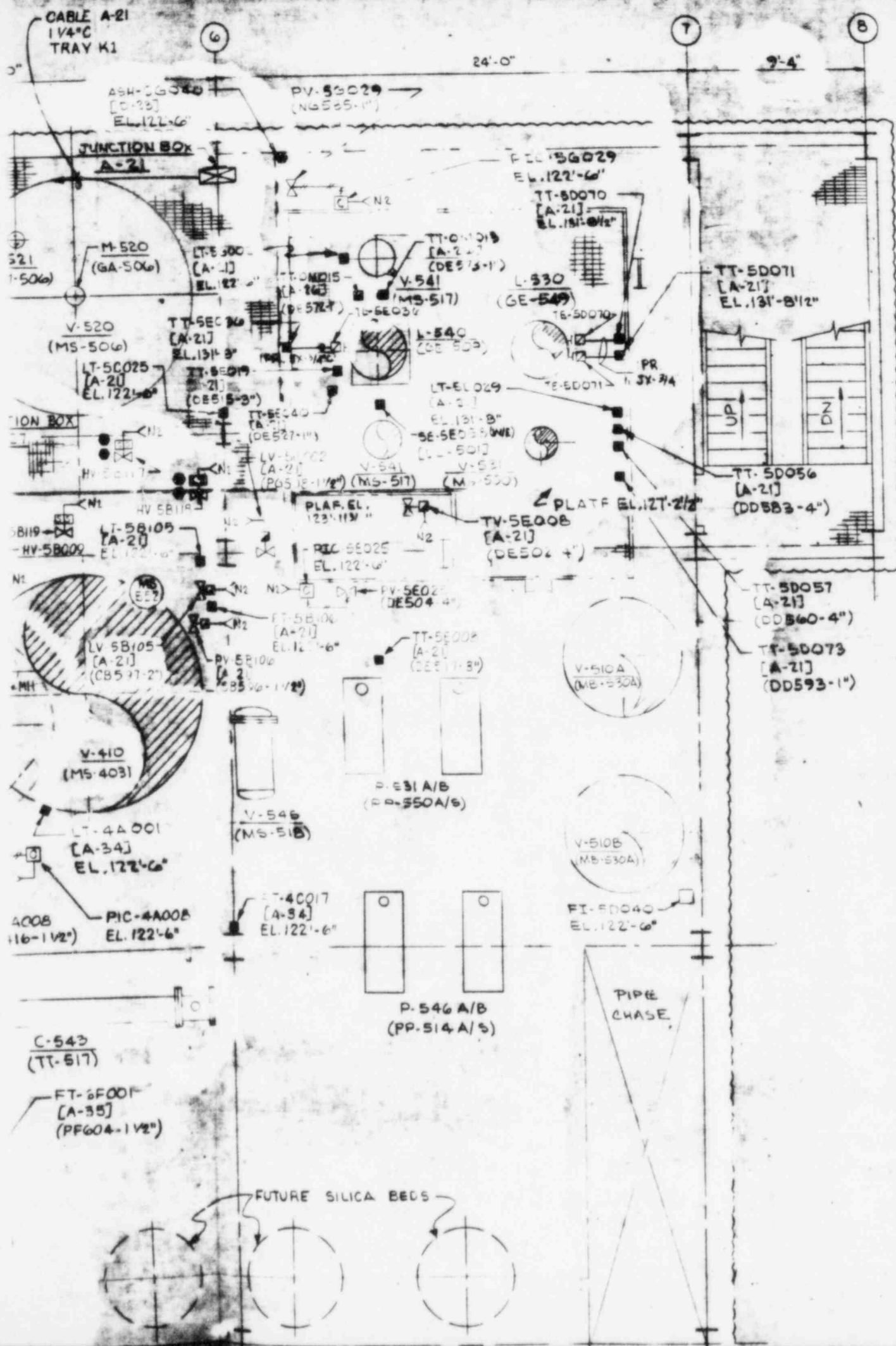
13

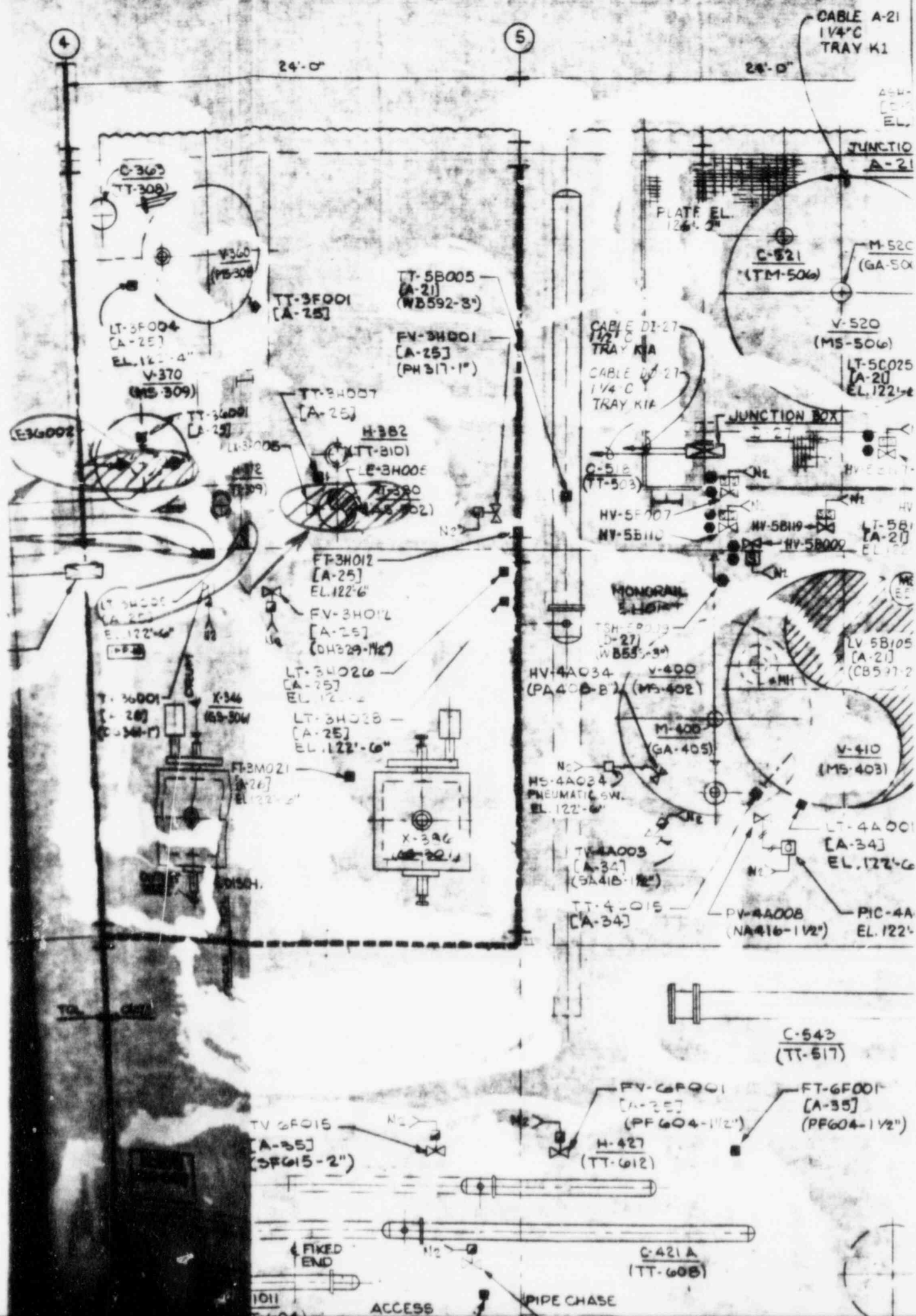
14

15

16

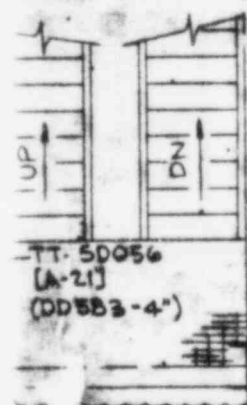
17





CONTROL NO. 9084

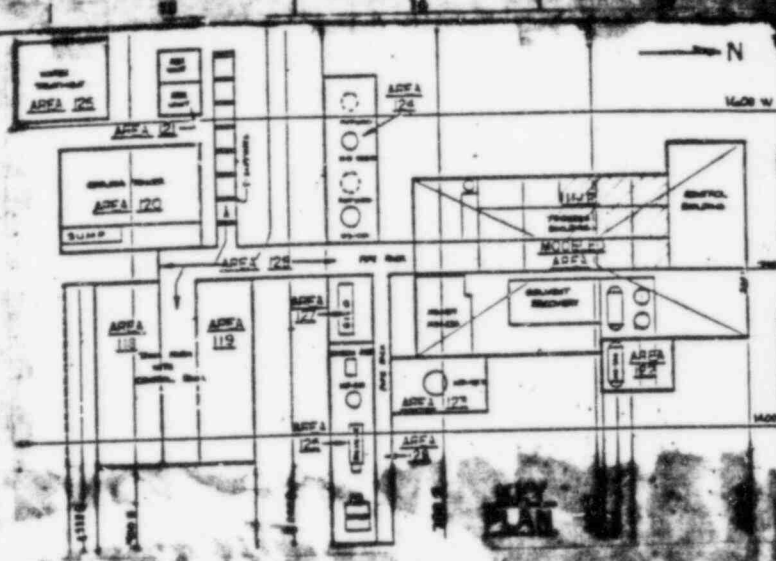
TT-50071
[A-21]
EL. 131'-8 1/2"



TT-50056
[A-21]
(DD583-4")

TT-50057
[A-21]
(DD560-4")

TT-50073
[A-21]
(DD593-1")



ITEM NO.	LOCATION	DEVICES ON VALVE	CONN. TO JUNCT. BOX
HV-5B007	WB527-3"	HY-5B007X/Y ZSH/L-5B007	D-27 D-27
HV-5B009	WB533-3"	HY-5B009 ZSH/L-5B009	D-27 D-27
HV-5B110	WB594-1"	HY-5B110 ZSH/L-5B110	D-27 D-27
HV-5B117	CB532-1 1/2"	HY-5B117X/Y ZSH/L-5B117	D-27 D-27
HV-5B118	CB573-2"	HY-5B118X/Y ZSH/L-5B118	D-27 D-27
HV-5B119	CB534-1 1/2"	HY-5B119X/Y ZSH/L-5B119	D-27 D-27

NOTE:

FOR GENERAL NOTES, LEGENDS,
SYMBOLS AND REFERENCE DRAWINGS
SEE DRAWING 5-0552-604-0.