

April 11, 1996



FYRNETICS INC.

Chris Brown
U.S. NRC
Mail Stop TW8K7
Washington D.C. 20555

Subject: Addition of new smoke alarm model to current licence
12-16856-01E control # 021785

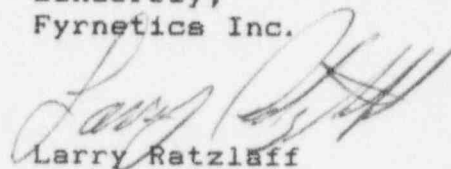
Dear Mr. Brown;

In our phone conversation on 4/11/96 you mentioned that you could not find the type 200 chamber drawings for our model 0915 smoke alarm in the NRC file, and that you needed these drawings in order to complete the current project.

Enclosed is the information for the type 200 chamber.

If you need additional information for this project please call me.

Sincerely;
Fyrnetics Inc.



Larry Ratzlaff
Product Engineer

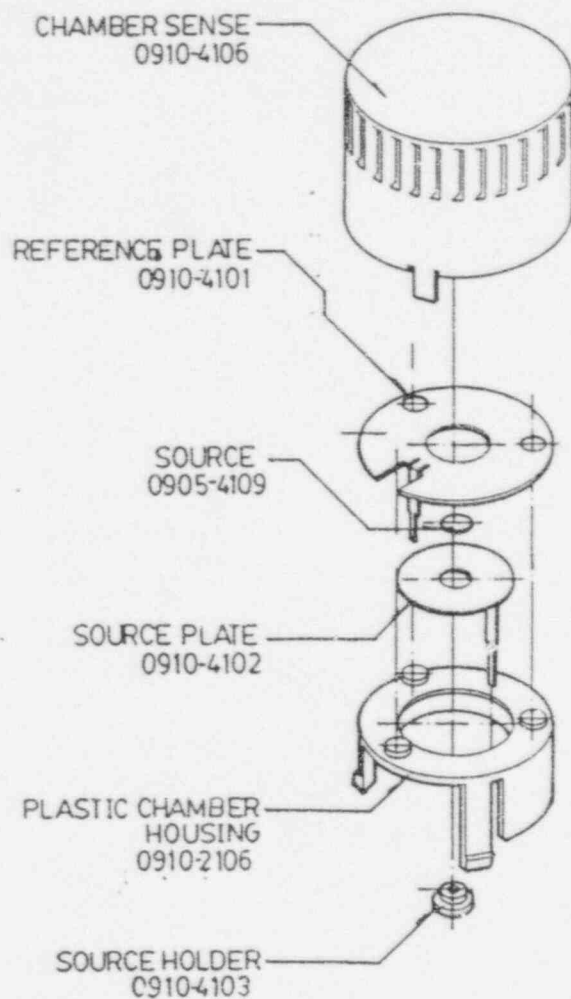
9610180167 960819
PDR RC *
SSD PDR

cc Tom Russo, JoAnne Sha

NOT APPROVED FOR PRODUCTION.

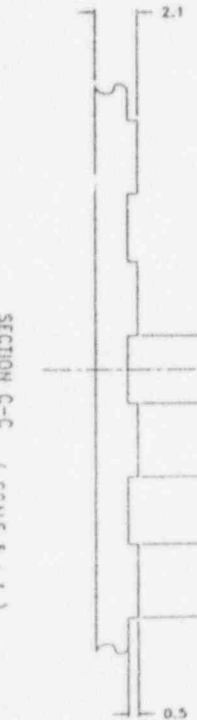
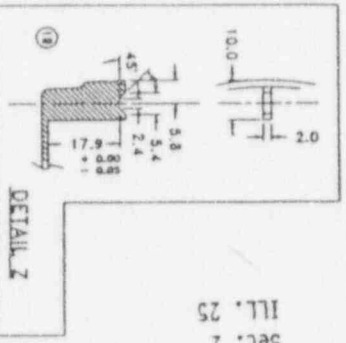
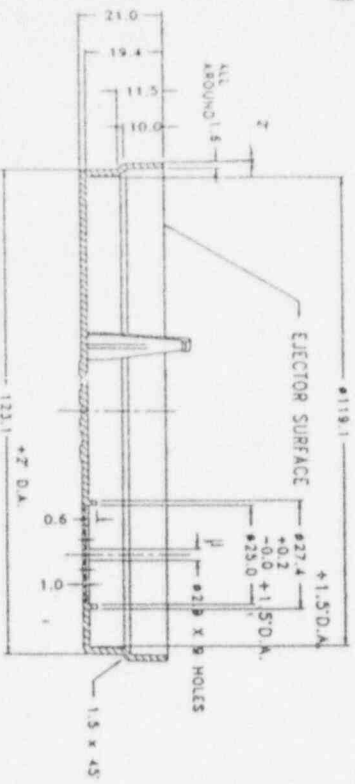
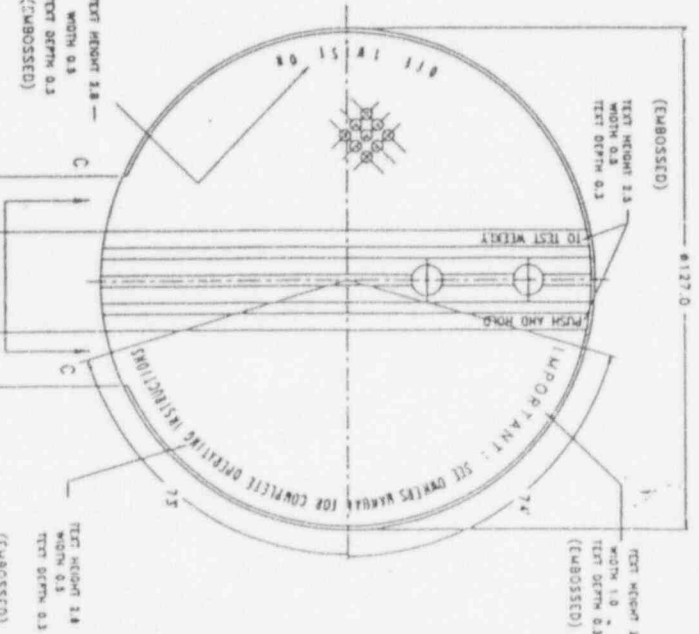
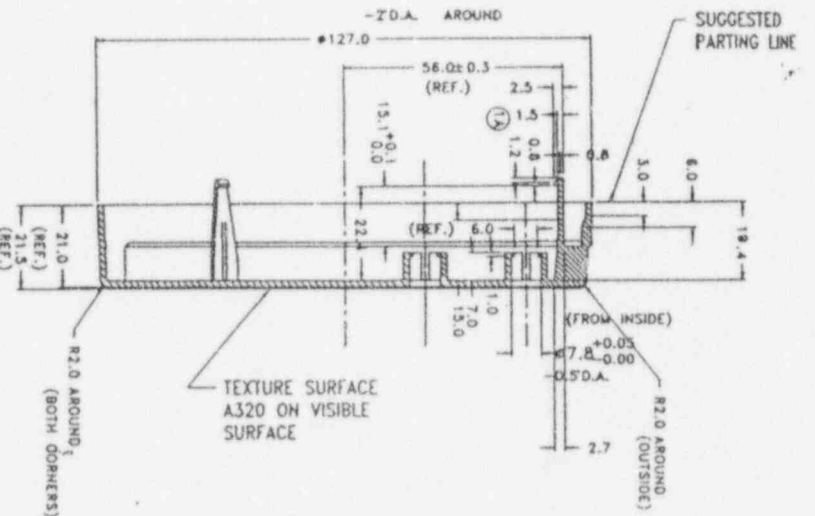
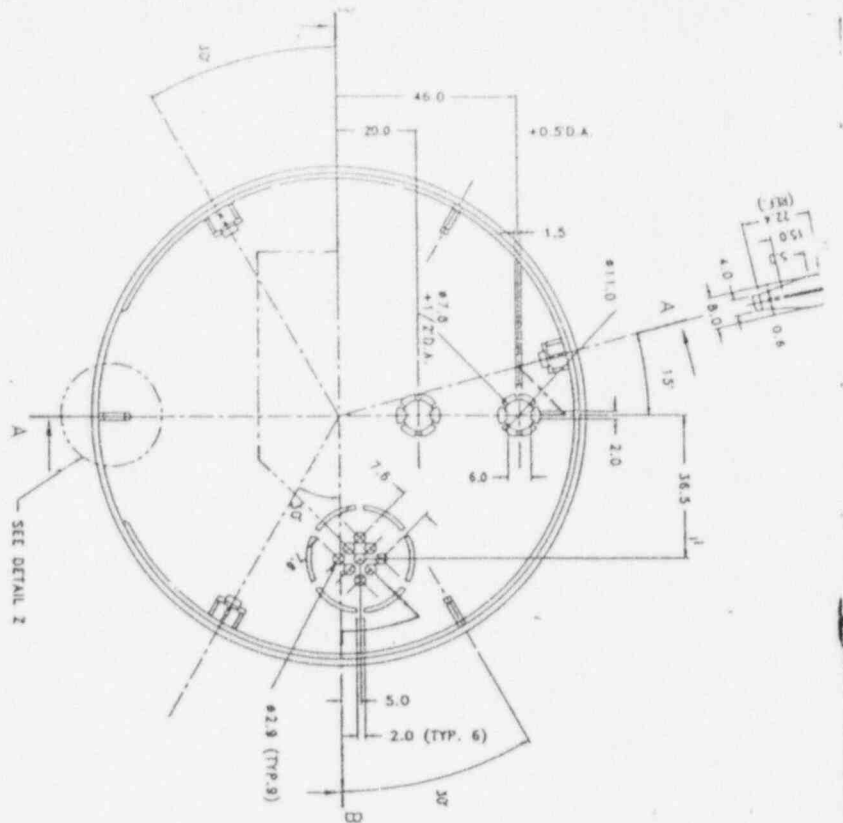
REVISIONS

SYM	DESCRIPTION	DATE	APP.



11 APR 1990
9004

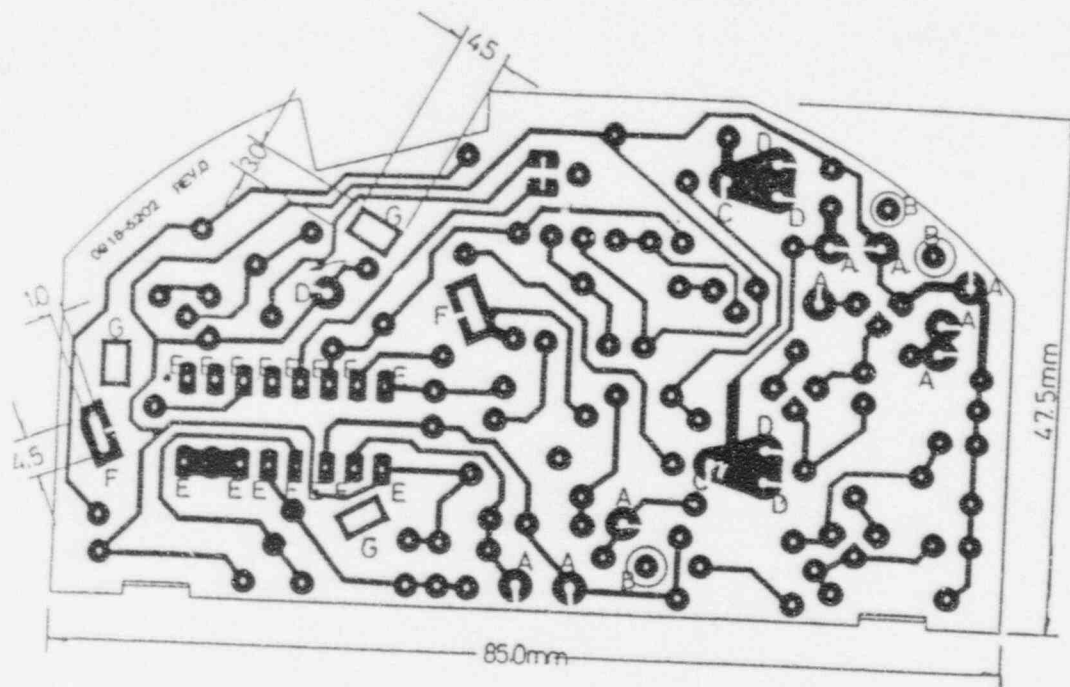
<p>UNLESS SPECIFIED, ALL DIMENSIONS ARE IN INCHES TOLERANCES ON: FRACTIONS $\pm 1/64$ DECIMALS $\pm .005$ ANGLES $\pm 1/2^\circ$</p>	QTY REQ'D PER UNIT	TR.	MANAGEMENT INVESTMENT & TECHNOLOGY CO., LTD			
	1	DR. CM, WONG				
	USED ON	DES.	CHAMBER ASSEMBLY DRAWING			
		CH.	SCALE N.T.S.	DWG SIZE	0910-9501	REV PR
MATERIAL: /		ENG. ELLSON	SHEET OF	B		
FINAL PROTECTIVE FINISH /						



- NOTES :
- 1) PARTS SHOULD BE APPROVED BY ENG. BEFORE PRODUCTION
 - 2) PARTS MUST BE FREE OF ALL WELD DEFECTS
 - 3) WELDINGS WELDED ON SURFACE ARE ALL EMBOSSED
 - 4) WELD SHRINKAGE FACTOR 5/1000

MATERIAL				MANUFACTURE			
DC UNIT : HPS BASF 458M				DC UNIT : HPS-2000			
AC UNIT : HPS-2000				AC UNIT : HPS-2000			
WELDING				WELDING			
WELDING				WELDING			

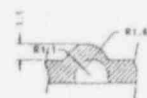
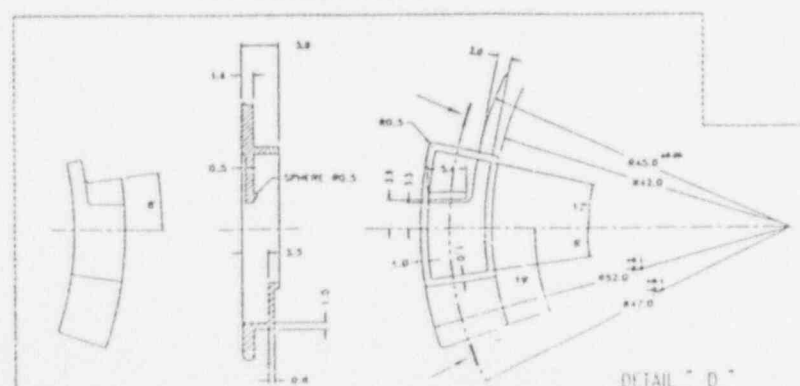
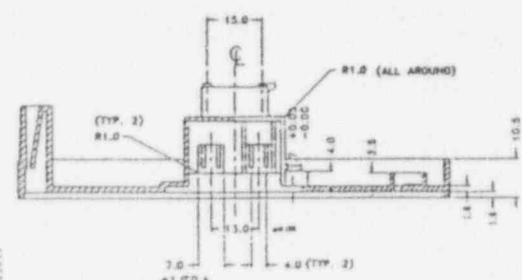
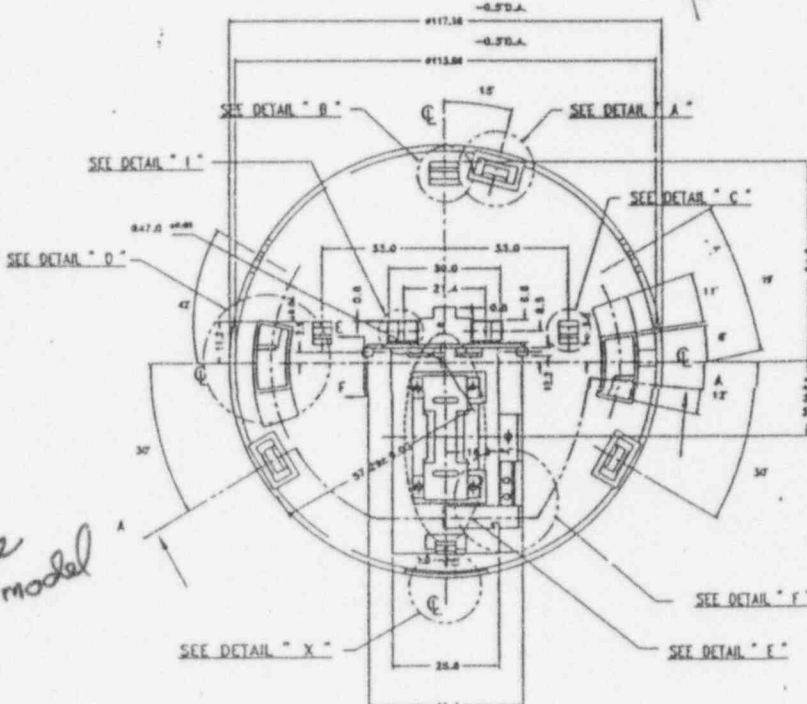
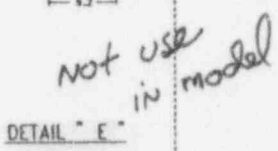
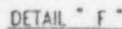
NO.	REV.	DATE	BY	CHK.
1	1	10/10/2000	10/10/2000	10/10/2000
2	1	10/10/2000	10/10/2000	10/10/2000



HOLE	SIZE(mm)	QTY.
A	Ø 1.1	9
B	Ø 3.0	3
C	Ø 1.9	2
D	Ø 1.5	5
E	Ø 0.8	15
F	RECT. 4.5X1.0	2
G	RECT. 4.5X2.0	3
OTHER	Ø 1.0	97

S1816
VOL.10
SEC.1
ILL.19
PG.2

UNLESS SPECIFIED, ALL DIMENSIONS ARE IN INCHES MM TOLERANCES ON: FRACTIONS $\pm 1/64$ DECIMALS $\pm .005$ ANGLES $\pm 1/2^\circ$		QTY. REQ. PER UNIT 1	TR.	MANAGEMENT INVESTMENT & TECHNOLOGY CO., LTD.			
MATERIAL: 1.6mm THICKNESS PAPER PHENOLIC UL-94HB 1oz COPPER		USED ON 0918	DR. CM.WONG 22-B-90				
FINAL PROTECTIVE FINISH:			DES.	P.C.B DIE CUT			
			CH.	SCALE: N.T.S		OWG SIZE B	0918-5202 0915, 0916
			ENG.	SHEET OF		REV PR	



SECTION E-E

NOTES : 1) PARTS MUST BE APPROVED BY ENG'G BEFORE PRODUCTION
2) PARTS MUST BE FREE OF ALL MouldING DEFECTS
3) DRAFT ANGLES MUST BE TAKEN OF WITH CARE'S
4) MOLD SHRINKAGE FACTOR : 5/1000

NOT APPROVED FOR PRODUCTION

REVISIONS

SYM	DESCRIPTION	DATE	APPR.
PR	PRELIM. RELEASE	15/4/90	E.CHUI
1	GEN. REL.	11/13/91	

DETAIL "B"

DETAIL "C"

SECTION E-D

SECTION B-B

VIEW F-F

DETAIL "G"

DETAIL "X"

DETAIL "J"

DETAIL "I"

SECTION C-C

ILL. 26
SEC. 2
VOL. 10
S 1816

ANSTEC
APERTURE
CARD

Also Available on
Aperture Card

9610180167-01

UNLESS SPECIFIED, ALL DIMENSIONS ARE IN MM
TOLERANCE ON
FRACTION ± 0.06 DECIMALS ± 0.1 ANGLE ± 0.5

MATERIAL: DC UNIT: 10P5 BASE 456M
AC UNIT: H5-2000

QTY	REQD	TR
1	DR	MURPHY LEE
1	DES	
1	CH	

MANAGEMENT INVESTMENT & TECHNOLOGY CO., LTD

B A S E (SINGLE BATTERY CHAMBER)

SCALE: 1:1
DWC
DC UNIT: 0915-0916
AC UNIT: 1735-1735

REV
1