



50-317/318

UNITED STATES
NUCLEAR REGULATORY COMMISSION

WASHINGTON, D.C. 20555-0001

October 11, 1996

ORGANIZATION: Baltimore Gas and Electric

SUBJECT: SUMMARY OF MEETING WITH BALTIMORE GAS AND ELECTRIC
COMPANY (BGE) ON BGE LICENSE RENEWAL ACTIVITIES

On September 20, 1996, the Nuclear Regulatory Commission (NRC) staff met with representatives of Baltimore Gas and Electric Company (BGE) to discuss the scope and schedule of the 90-day effort proposed at the September 11, 1996, management meeting.

At the September 11, 1996, NRC/BGE management meeting, NRC management proposed a 90-day review effort to fully exercise the template with respect to the key issues (intended functions, operating experience, and corrective actions) identified during the management meeting. The focus of this meeting was to determine the scope and schedule for the 90-day effort. Attachment 1 is a list of meeting attendees and Attachment 2 is a copy of the material distributed during the meeting.

The staff and BGE first discussed the scope of the 90-day review effort. BGE proposed to focus on three reports for this effort, Component Supports, Main Feedwater, and Structures. To address the intended function issue, BGE stated that they would revise the reports to meet sections I.A and I.B of the BGE template. BGE also stated that the revised reports would attempt to address the comments made by NRC management during the September 11, 1996, meeting concerning intended functions. To facilitate the discussion on intended functions, an on-site review of design information was added to the scope.

To address the issues of corrective actions and operating experience, BGE stated that it would focus on one component/structure type and revise the reports, for that component type, to meet section II of the template. For the feedwater report, BGE intends to focus on carbon steel piping, for the component supports report BGE will focus on piping hangers, and for the structures report BGE will focus on the auxiliary building.

Coincident with the 90 day effort, the staff and BGE agreed to include technical discussions on BGE license renewal activities for cables. To initiate this activity, a meeting has been scheduled for October 16, 1996. This meeting will include discussions on EQ and Non-EQ cable activities for license renewal. This meeting will be used to develop the 90 day scope and schedule for this activity.

BGE proposed a schedule for the 90-day effort (see attachment 2). The staff agreed to the proposed schedule. The on-site discussion of design information was added to the schedule. This activity is scheduled for October 10, 1996.

9610170276 961011
PDR ADOCK 05000317
P PDR

NRC FILE CENTER COPY

October 11, 1996

Baltimore Gas and Electric

- 2 -

At the conclusion of the meeting, BGE stated that coincident with this 90 day effort it is addressing the staff's request for additional information (RAI) issued August 30, 1996, and is continuing to produce new reports, in accordance with the template, for submittal to the staff in the first quarter of 1997. Attachment 3 is a copy of photographs taken during the September 11, 1996, tour.

Scott C. Flanders, Project Manager Original signed by
License Renewal Project Directorate
Division of Reactor Program Management
Office of Nuclear Reactor Regulation

Docket Nos.: 50-317 and 50-318

Attachments:

1. Attendance List
2. Meeting Handouts

cc w/attachments:

See next page

DISTRIBUTION w/attachments

Central File/Docket File

PUBLIC

PDLR R/F

DISTRIBUTION via e-mail w/o attachments:

JMitchell, EDO (JAM) JCraig, RES (JWC1)
MMayfield, RES (MEM2) JVora, RES (JPV)
AMurphy, RES (AJM1) GMizuno, DGC (GSM)
HBrammer, NRR (HLB) SDroggitis, OSP (SCD)
PDLR Staff CSerpan, RES (CZS)
LShao, RES (LCS1)
GBagchi, NRR (GXB1)

DISTRIBUTION w/o attachments:

FMiraglia/Athadani, 0-12 G18
RZimmerman, 0-12 G18
GHolahan, 0-8
TMartin, 0-11 H21
ACRS, T-2 E26
MMalsch, 0-15 B18
TSpeis, T-10 F12
EJordan, T-4 D18
JMoore/EHoller, 0-15 B18
BSheron, 0-7 D26

DOCUMENT NAME: A:920MS (SFlanders/LLM Disk)

To receive a copy of this document, indicate in the box: "C" = Copy without attachment/enclosure "E" = Copy with attachment/enclosure "N" = No copy

OFFICE	PM: PDLR	D: PDLR						
NAME	SFlanders/llm	SFNewberry						
DATE	10/11/96	10/11/96						

OFFICIAL RECORD COPY

October 11, 1996

Baltimore Gas & Electric Company

cc:

President
Calvert County Board of
Commissioners
175 Main Street
Prince Frederick, Md 20678

D. A. Brune, Esquire
General Counsel
Baltimore Gas and Electric Company
P.O. Box 1475
Baltimore, MD 21203

Jay E. Silberg, Esquire
Shaw, Pittman, Potts and Trowbridge
2300 N Street, NW
Washington, DC 20037

Mr. Terrence J. Camilleri, Director,
NRM
Calvert Cliffs Nuclear Power Plant
1650 Calvert Cliffs Parkway
Lusby, MD 20657-4702

Resident Inspector
c/o U.S. Nuclear Regulatory
Commission
P.O. Box 287
St. Leonard, MD 20685

Mr. Richard I. McLean
Administrator - Radioecology
Department of Natural Resources
580 Taylor Avenue
Tawes State Office Building
B3
Annapolis, MD 21401

Regional Administrator, Region I
U.S. Nuclear Regulatory Commission
475 Allendale Road
King of Prussia, PA 19406

Calvert Cliffs Nuclear Power Plant
Unit Nos. 1 and 2

Mr. Joseph H. Walter, Chief Engineer
Public Service Commission of
Maryland
Engineering Division
6 St. Paul Centre
Baltimore, MD 21202-6806

Kristen A. Burger, Esquire
Maryland People's Counsel
6 St. Paul Centre
Suite 2101
Baltimore, MD 21202-1631

Patricia I. Birnie, Esquire
Co-Director
Maryland Safe Energy Coalition
P.O. Box 33111
Baltimore, MD 21218

Mr. Larry Bell
NRC Technical Training Center
5700 Brainerd Road
Chattanooga, TN 37411-4017

Mr. Charles H. Cruse
Vice President - Nuclear Energy
Baltimore Gas and Electric Company
Calvert Cliffs Nuclear Power Plant
1650 Calvert Cliffs Parkway
Lusby, MD 20657-4702

ATTENDANCE LIST
NRC MEETING WITH BALTIMORE GAS AND ELECTRIC COMPANY
September 20, 1996

	<u>NAME</u>	<u>ORGANIZATION</u>
1.	Barth Doroshuk	BGE
2.	Don Shaw	BGE
3.	Steve Hoffman	NRC/NRR/DRPM/PDLR
4.	Sam Lee	NRC/NRR/DRPM/PDLR
5.	P. T. Kuo	NRC/NRR/DRPM/PDLR
6.	Scott Flanders	NRC/NRR/DRPM/PDLR
7.		
8.		
9.		
10.		
11.		
12.		
13.		
14.		
15.		
16.		
17.		
18.		
19.		
20.		
21.		
22.		
23.		
24.		
25.		
26.		
27.		
28.		
29.		
30.		
31.		
32.		
33.		
34.		
35.		
36.		
37.		
38.		
39.		
40.		
41.		
42.		

BGE's proposed approach to the Fall 1996 License Renewal initiative

Week	Date	Location	Event
1	Friday, September 20	White Flint	Kickoff meeting, scope of work, schedule agreement.
2			- work in progress -
3			- work in progress -
4	Thursday, October 10	CCNPP	BGE presents scoping/functions samples (Template sections I.A. and B.) and on-site scoping results to NRC for Feedwater, Structures, Supports.
5	Thursday, October 17	CCNPP	NRC returns to site for further review of documentation.
6	Thursday, October 24	White Flint	NRC provide final scoping/functions comments, reach resolution. BGE deliver demonstration pieces for Feedwater, Structures, Supports selected component types.
7	NRC workshop on NEI pilot is this week		- work in progress -
8	Thursday, November 7	CCNPP	NRC site visit for purposes of inspection guide development.
9	Thursday, November 14	White Flint	NRC feedback on demonstration, reach resolution.
10	Thursday, November 21	White Flint	Final comments on all LR activities. Plans for management meeting.
11	Thanksgiving week		
12			- preparations in progress -
13	Thursday, December 12	CCNPP	Senior Management Meeting.

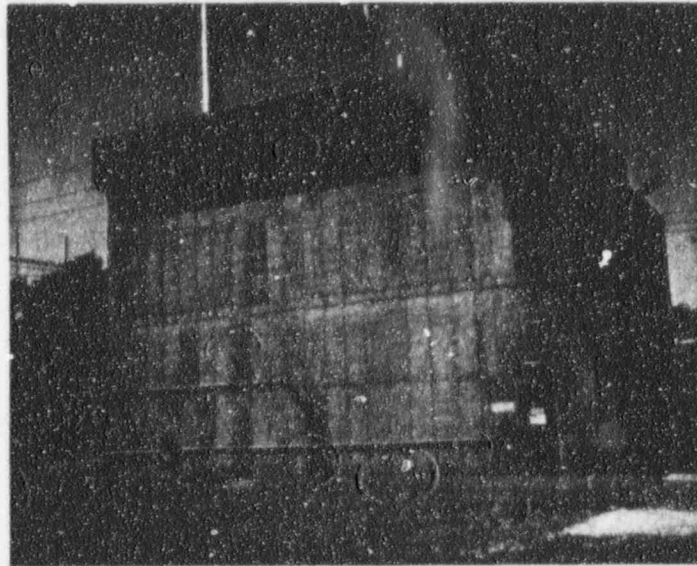


Calvert Cliffs Nuclear Power Plant

License Renewal Project

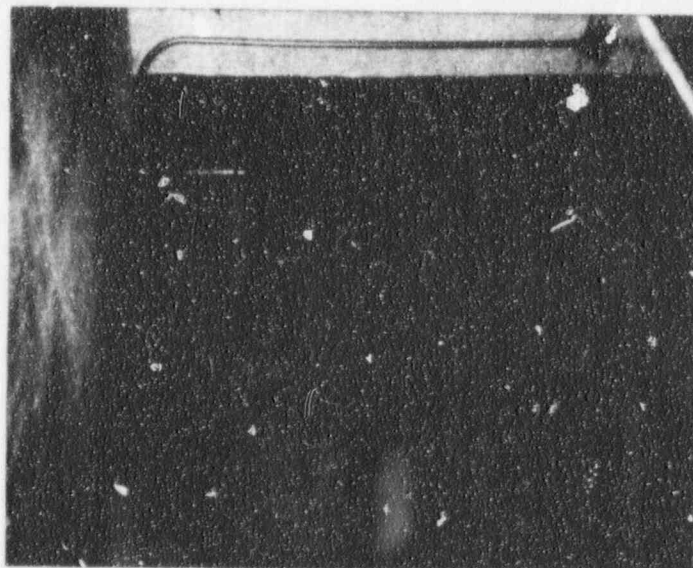
Plant Tour

September 1, 1996



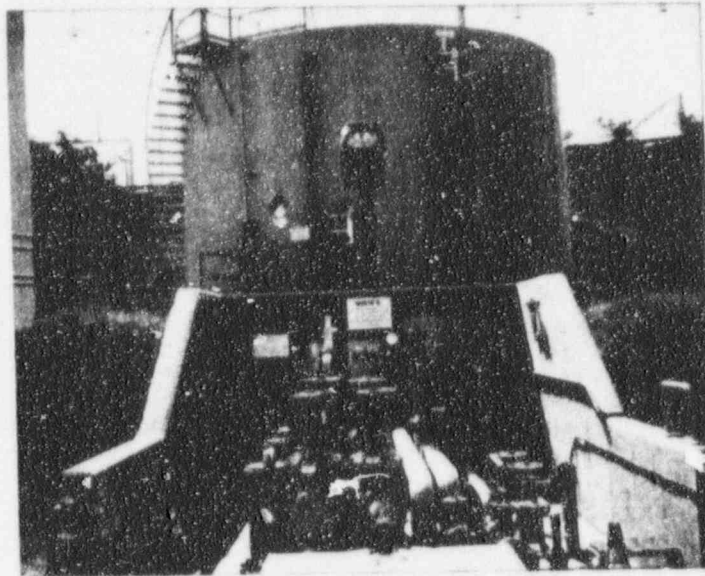
①

1. Fuel Oil Storage Tank No. 21 Enclosure - South Side



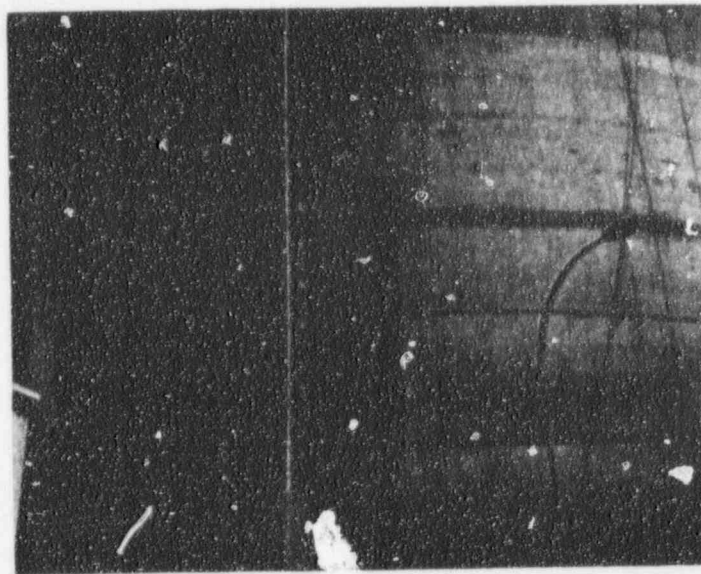
②

2. Inside Fuel Oil Storage Tank No. 21 Enclosure - Vent Pipe, Steel Decking



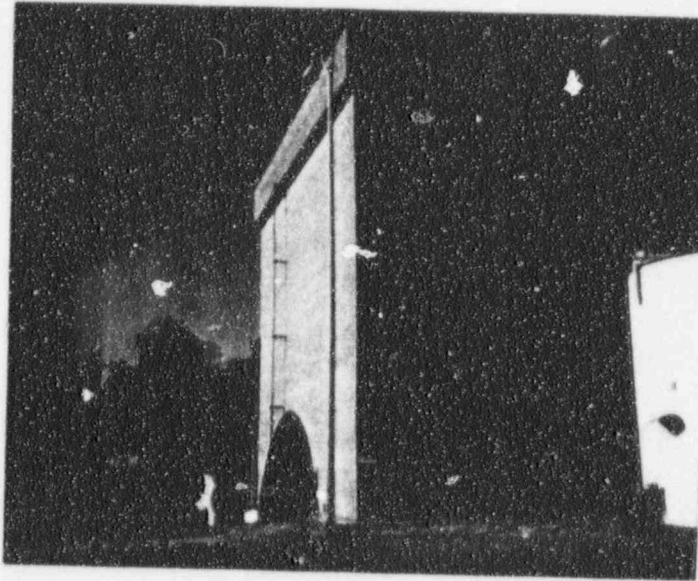
③

3. Fuel Oil Storage Tank No. 11; Fuel Oil Unloading Station in Foreground



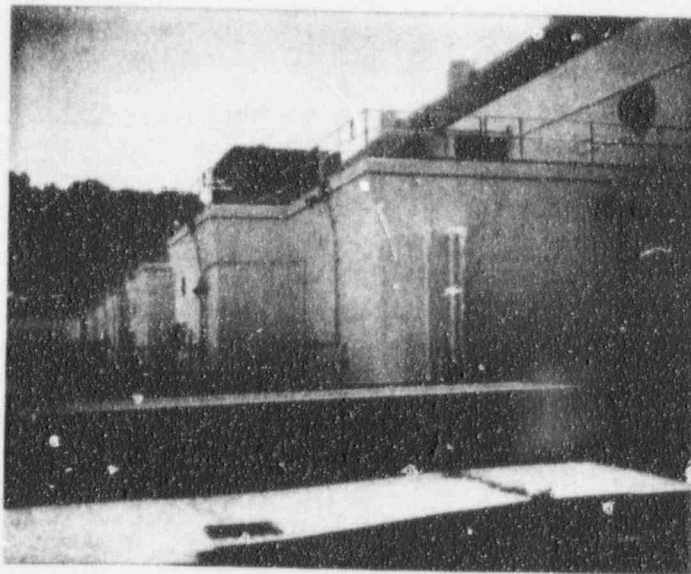
④

4. Unit 1 Containment - North Side; Grease Mark



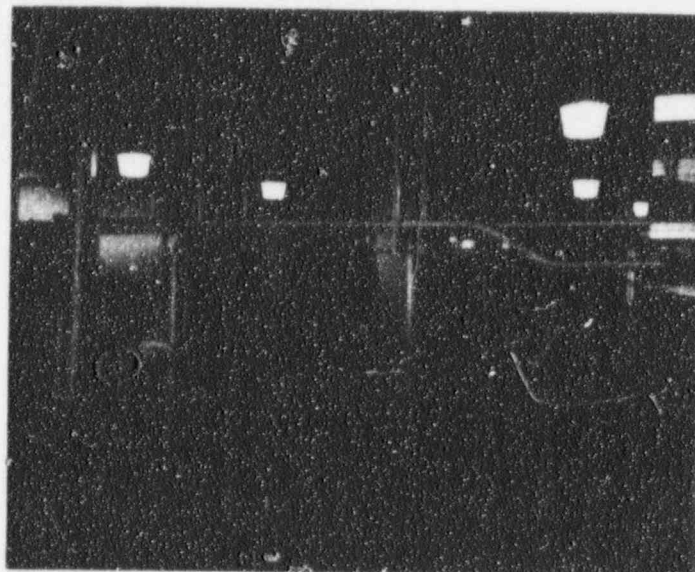
(5)

5. Condensate Storage Tank No. 12 Enclosure - South Side



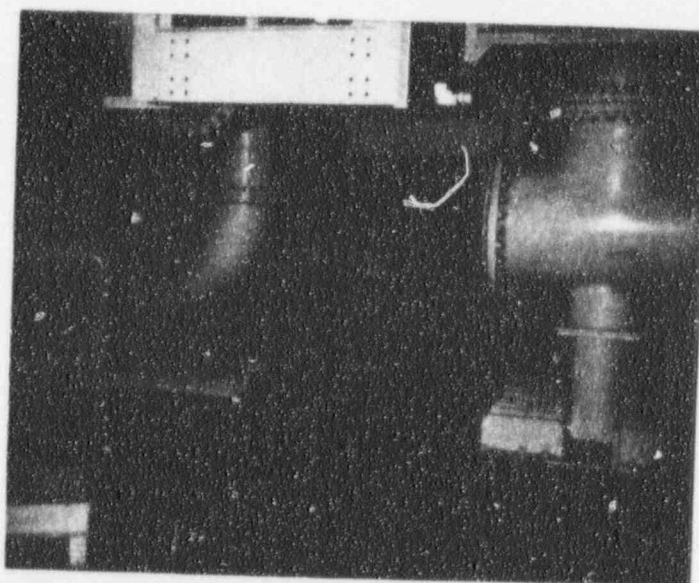
(6)

6. Intake Structure - North to South View



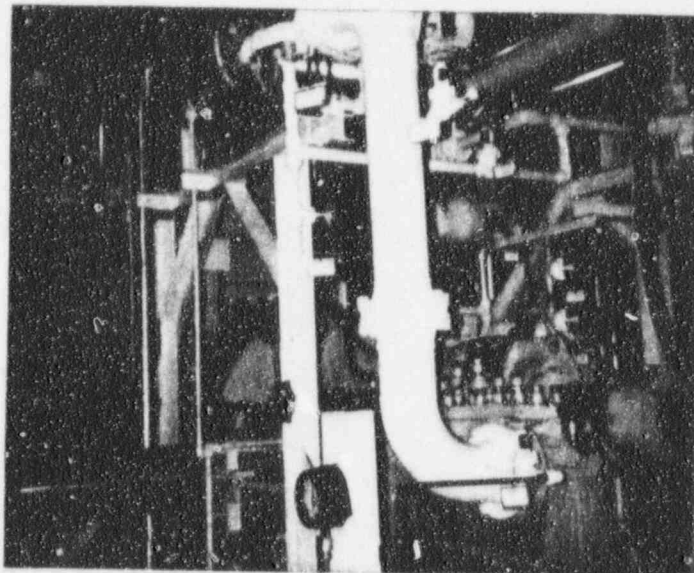
⑦

7. Inside Intake Structure Pump Room



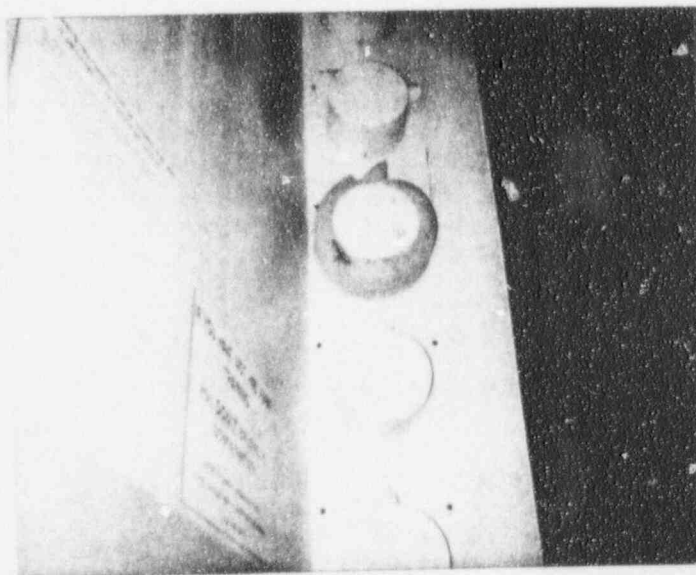
⑧

8. Intake Structure Pump Room - Component Supports



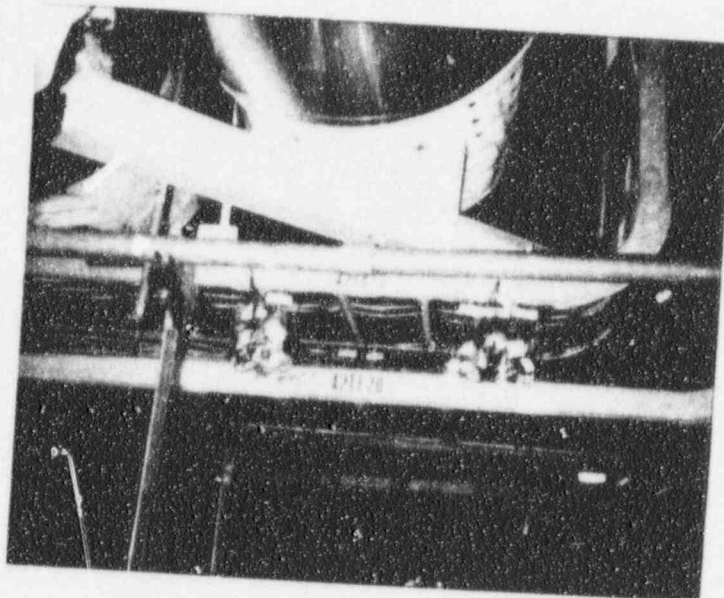
9

9. Unit 2 Auxiliary Feedwater Pump Room\



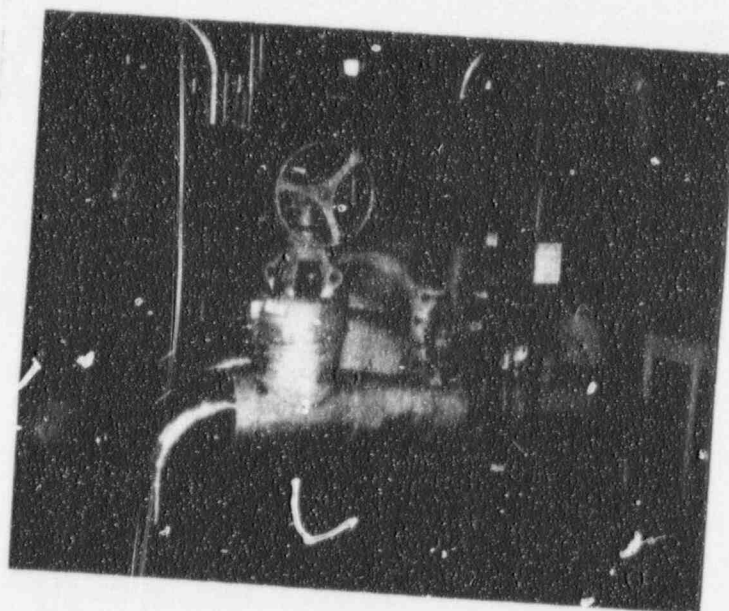
10

10. Containment Tendon Grease Caps - Unit 1 69' Elevation



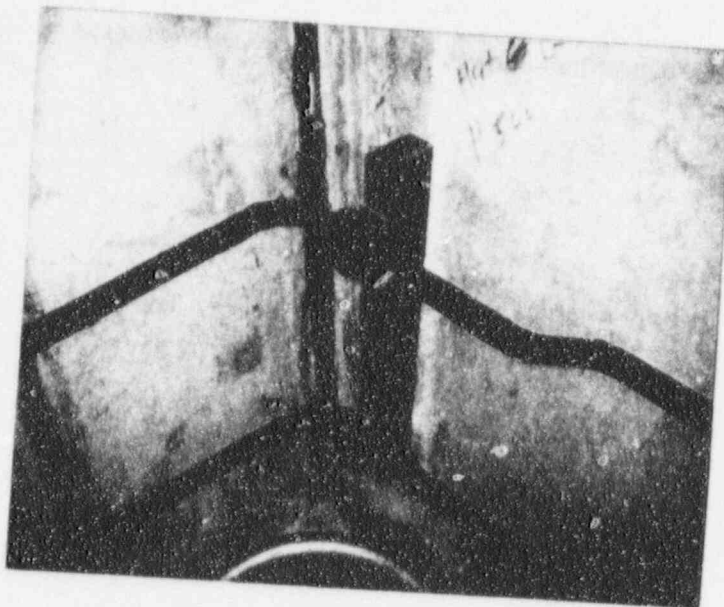
11

11. Cable Tray Temperature Monitoring Probes



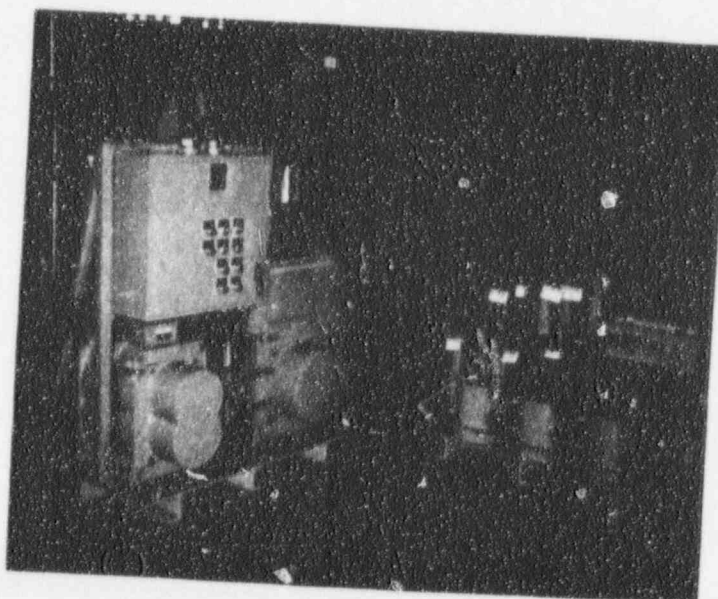
12

12. Unit 2 Main Feedwater Regulating Station - Turbine Building



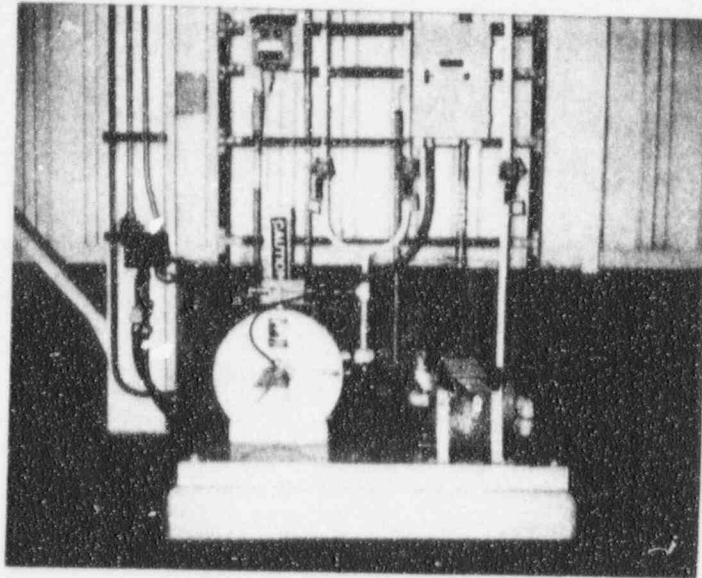
(13)

13. Wide Range Noble Gas Monitor - Insulated Sample Tubing



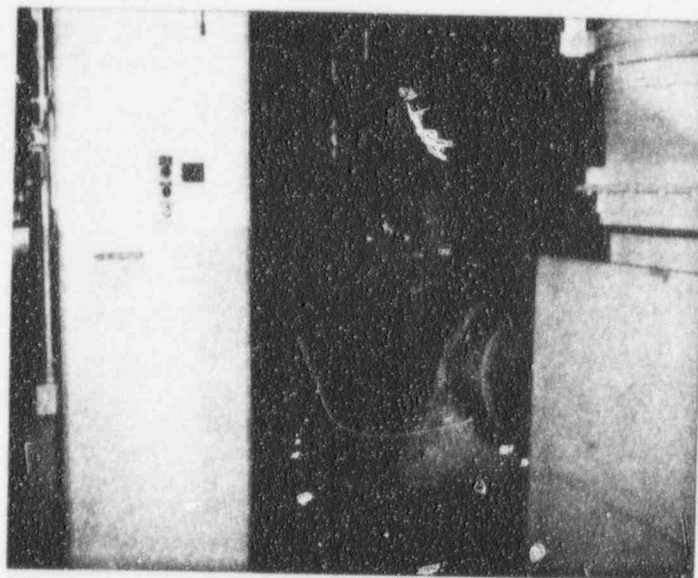
(14)

14. Wide Range Noble Gas Monitor - Equipment Skids



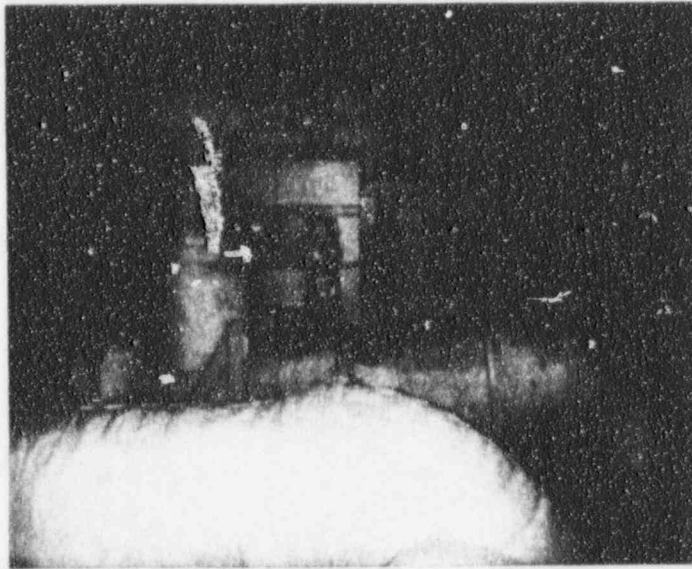
(15)

15. Control Room Radiation Monitor



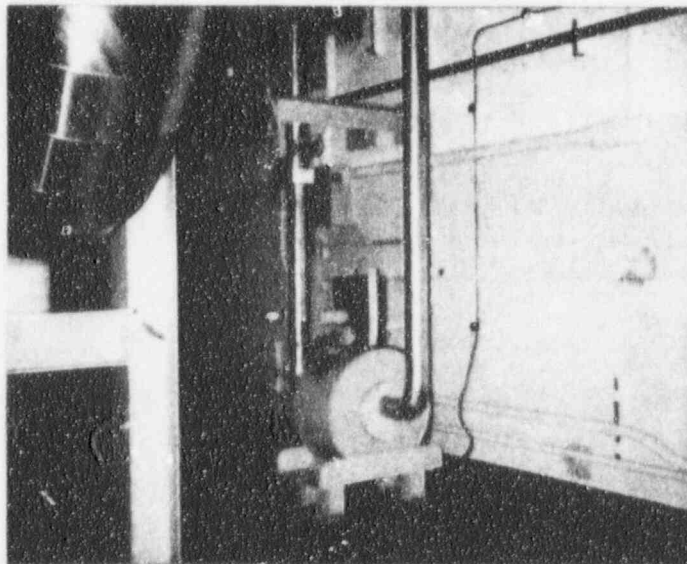
(16)

16. Unit 1 Feedwater Line, Motor Operated Isolation Valve, Seismic Anchor - MSIV Room



(17)

17. Unit 1 Feedwater Line, Motor Operated Isolation Valve - MSIV Room



(18)

18. Component Cooling System Radiation Monitor