



An Affiliate of Philip Morris Incorporated

DE PERE, WISCONSIN 54115 • PHONE: AREA 414-336-4211 • TWX NO. 910-270-1315

June 6, 1985

U. S. Nuclear Regulatory Commission
Region III
Radioisotopes Licensing Section
799 Roosevelt Road
Glen Ellyn, IL 60137

U.S. NUCLEAR REGULATORY COMMISSION
LIC. FEE
85 JUN 26 PM 12:48
RECEIVED

Applicant	Line 24
Order No.	28275
Amount Fee Category	700
Type of Fee	Amal 3P
Date Check Rec'd	6/26/85
Received By	[Signature]

Dear Sirs:

We have purchased two Measurex Model 2201 thickness gauges from the manufacturer's site at One Results Way, Cupertino, California, 95014, manufactured under general license number GL 1856-43. The gauges are to be used for on-line measurement of basis weight on our off machine coater. The initial radiation survey, installation, location and the ambient environmental conditions were all completed by the Measurex Corporation.

Please amend our license No. 48-14170-01 to read as follows:

1. Please add to the license,

- 6-G, Krypton 85
- 7-G, Sealed sources, Model NER586
- 8-G, One curie each (two sources total)
- 9-G, For use in Measurex Corp. model 2010 Scanner with quadrapack heads. Source model 2201 for on-line measurement of basis weight.

Included in this application is the step-by-step procedure for replacing the mylar windows and the radiation calculation for whole body and hand and forearm doses during a window replacement.

I hope this information is sufficient to allow you to amend our license.

Very truly yours,

Tim Doolan

Tim Doolan
Process Engineer

TD/bk

Enc.

8507260362 850708
REG3 LIC30

48-14170-01

PDR

RECEIVED

JUN 21 1985

REGION III

JUN 21 1985
CONTROL NO. 7 920 6

MANUFACTURERS OF GLASSINE, GREASEPROOF AND SPECIALTY PAPERS
METALLIZED, WAXED AND COATED GRADES

WINDOW REPLACEMENT PROCEDURE

MEASUREX 2040 SCANNER

1. Check that the shutter is closed, green radiation light is on.
2. Remove the drive belt from the top head assembly, by removing the two bolts from the C.D. alignment slots. Push the top head out of the way, see Figure A.
3. Remove the four flat head screws holding the retaining ring to the head assembly and lift off the ring. See Figure B.
4. Remove the torn mylar window and replace with a new one.
5. Replace retaining ring and fasten down with the four flat head screws.
6. Move the top head back into position and reattach the drive belt.

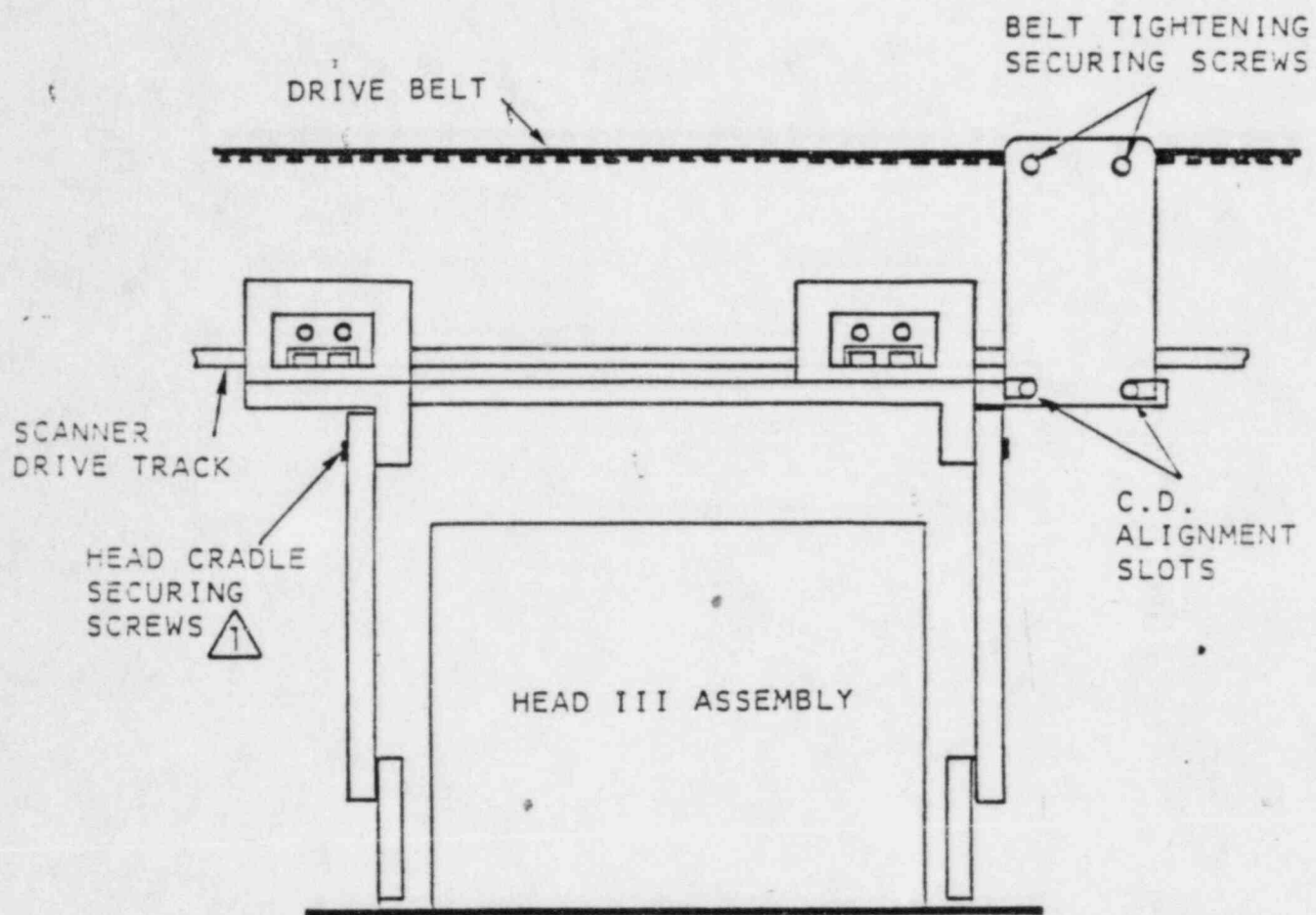
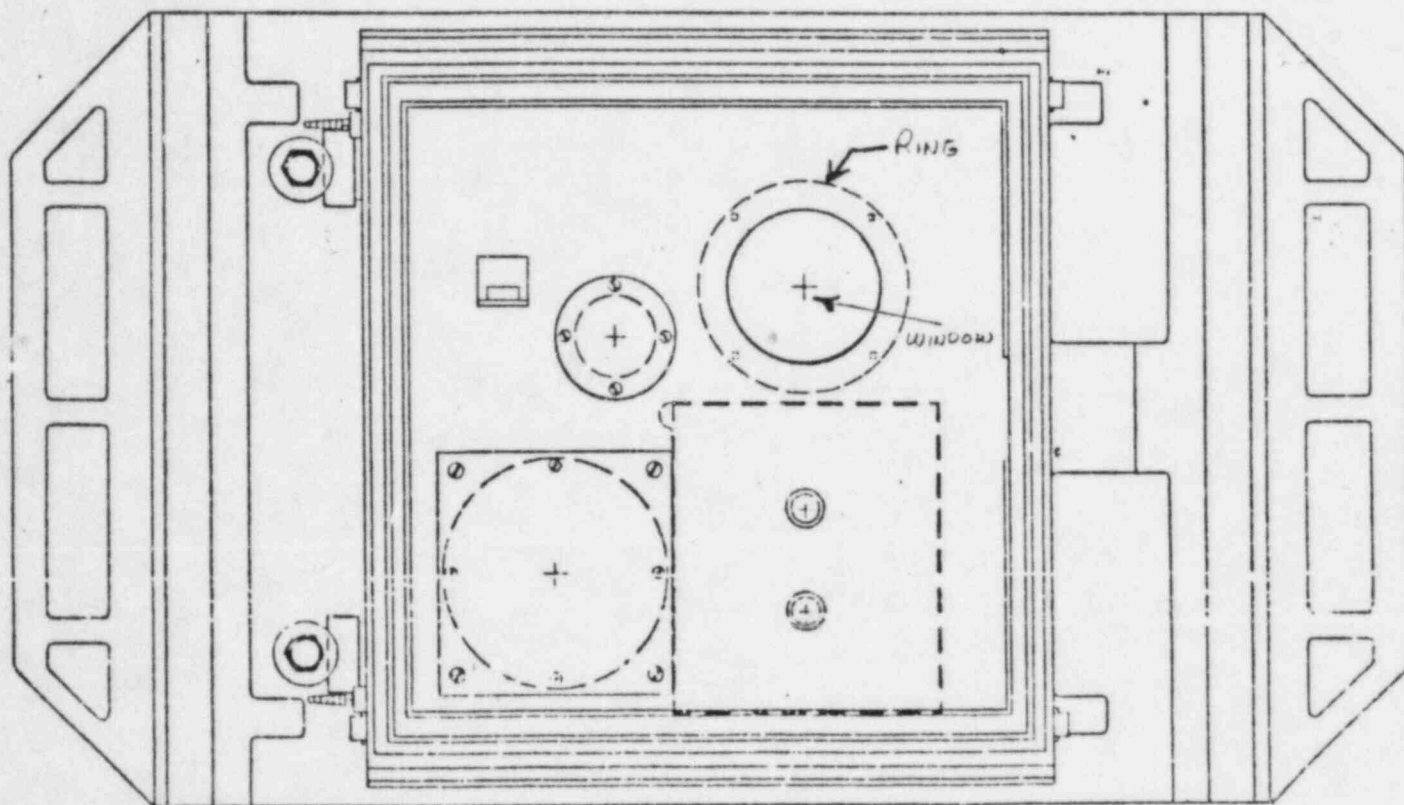


FIGURE A



LOWER HEAD

FIGURE - B

RADIATION EXPOSURE CALCULATIONS

The time required to change an external window is approximately fifteen minutes. All calculations are based on a thirty minute exposure time for additional safety.

All radiation level readings were provided by the Measurex Corporation using a Victoreen 440 survey meter.

1. Anticipated whole body dose for one window repair. The maximum level at one foot is .75 MR per hour. The dose per window change is .375 MR, the 25% of limit per calendar quarter as per section 20.101 of 10 CFR, part 20 is 312.5 MR. The number of window changes per calendar quarter before badges would be required is 833.
2. Anticipated hand and forearm dose for one window repair. The maximum level at the window is 90 MR per hour. The dose per window change is 45 MR with the 25% of limit per calendar quarter as per section 10.101 of 10 CFR, part 20 is 4687.5 MR. This means the number of window changes per calendar quarter before badges would be required is 104.

A record of the number of window changes and the time taken will be kept on site.