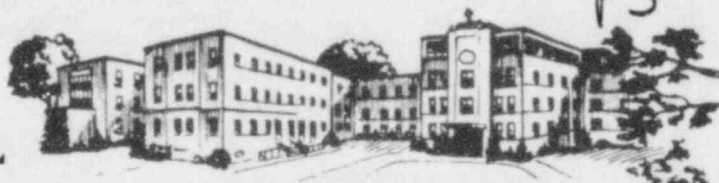


MS-12
P3

**SACRED HEART HOSPITAL
AND
REHABILITATION CENTER**



1430 DEKALB ST., NORRISTOWN, PA.

PHONE: 278-8200

17 January 1985

JOHN E. GLENN, Ph.D., CHIEF
Nuclear Materials Section B
Division of Engineering and
Technical Programs

Lic. # 37-01563-03
Docket # 030-0289
Cntrol # 02771

Dear Dr. Glenn:

With reference to your letter dated 17 Dec 84 regarding renewal of our license # 37-01563-03, we enclose the following:

A. Documents of Training and Experience for:

Severin Teufel, M.D. and Alan Weiss, M.D.

B. Our high-level survey meter is:

Cutie Pie (Victoreen, Model # 740-F)
Serial # 2409
Highest Level Range: 25R/hr

C. Detailed Diagram of Facility (Enclosed):

- a) We no longer use a Tc^{99m} Generator.
- b) Refrigerated radiopharmaceuticals are kept in a lead-lined refrigerator (Baird-Atomic):
Shielding 1/2" lead
Dimensions: Height 33"
Width 19"
Depth 30"

Non-refrigerated radiopharmaceuticals, and needles, gloves, syringes &c:
Lead-lined waste container (Atomic Products Model # 039-100) Lead thickness 1/8"

8505290439 850508
REG1 LIC30
37-01563-03 PDR

"OFFICIAL RECORD COPY"

30-2989

02771

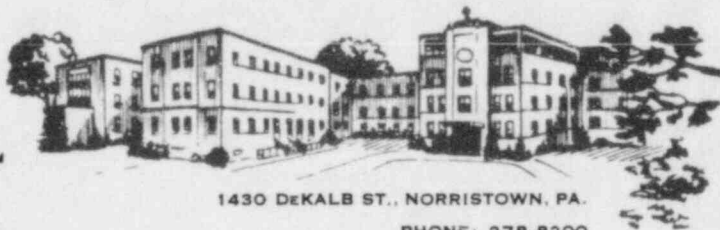


A NOT FOR PROFIT COMMUNITY HOSPITAL OWNED AND OPERATED BY
THE MISSIONARY SISTERS OF THE MOST SACRED HEART OF JESUS

24 JAN 1985

ML10

**SACRED HEART HOSPITAL
AND
REHABILITATION CENTER**



1430 DEKALB ST., NORRISTOWN, PA.

PHONE: 278-8200

John E. Glenn, Ph. D., Chief

17 January 1985, p.2

Lic. # 37-01563-03
Docket # 030-02989
Control # 02771

- C. c) For decay of radiopharmaceuticals:
Stored in hot-lab for at least 10 (ten) half-lives.

Modular System: ADC Medical Systems
Lead shielding 1/2" thickness on all sides
Dimensions: 36" x 30" x 36"
Drawers 6 1/4" x 5 1/2" x 11 1/2", 1/2" lead on all sides.

- d) For preparation and dispensing radiopharmaceuticals:

Table Top lead Barrier Shield:
ADC Medical Systems Model #TTS-101
1/2" lead front
1/4" lead glass face shield
Solid lead base

This shield is used with 2" x 4" x 6" lead bricks on both sides and back of table top.

- e) All hot lab walls are lined with lead. Unrestricted areas do not exceed limits specified by 10 CFR 20-105.

D. Procedure for ordering radiopharmaceuticals:

We order by calling Mallinckrodt Nuclear Pharmacy and order unit doses for the patients scheduled for the following day. We also have a standing order for 200mCi of ^{99m}Tc which we receive in vials for use in making up pharmaceuticals for Stat procedures.

For receipt of materials during off-duty hours, see enclosure 3.



A NOT FOR PROFIT COMMUNITY HOSPITAL OWNED AND OPERATED BY
THE MISSIONARY SISTERS OF THE MOST SACRED HEART OF JESUS

**SACRED HEART HOSPITAL
AND
REHABILITATION CENTER**



1430 DEKALB ST., NORRISTOWN, PA.

PHONE: 278-8200

John E. Glenn, Ph. D., Chief

17 January 1985, p.3

Lic. # 37-01563-03
Docket # 030-02989
Control # 02771

E. Decontamination Survey:

Enclosure #4 is the decontamination survey we conducted on our old Nuclear Medicine Facility, specified in dpm/100cm² as you requested. The sensitivity of our system, with the sample on the crystal, is 1cpm=10dpm. Please note that the Decay Bin, calculated at 600dpm, was moved to the new Hot Lab before the room was released.

Yours truly,

A handwritten signature in cursive script that reads "Arthur C. Godin".

ARTHUR C. GODIN, Administrator
Sacred Heart Hospital
1430 DeKalb Street
Norristown, PA 19401



A NOT FOR PROFIT COMMUNITY HOSPITAL OWNED AND OPERATED BY
THE MISSIONARY SISTERS OF THE MOST SACRED HEART OF JESUS

THE HORIZONTAL PLANE MUST
RESIST A 300 LB FORCE AT ANY
SECTION WITH 1/16" MAXIMUM
DEFLECTION.

U-A
30-CENTER
6'-6"

DRILL 4 HOLES
FLOOR SLAB FOR 1/2 THRU
UTS G.E. WILL LOCATE
OLS. BY G.C. BOLTS BY GE

NUCLEAR ROOM #10

8

Enclosure #2

15'-0"

WALL
CASES

REVOLVING
DARKROOM
DOOR 28" TWO-WAY
CONSOLIDATED INTER-
NATIONAL CORP. OR EQUIV.

DARK
RM.
8

COUNTER
TOP

FILM
BIN
(COB.)
(5602
TANK)
(5602
TANK)

LEAD LINING
REQUIRED

6'-0 1/2"

HOT LAB.
8

UNDER COUNTER
REFRIGERATOR

NUCLEAR
MEDICINE
STORAGE
34 DX 17 1/2
W X 36 1/2 H
ATOMIC
PROD. CORP.

DRESSING RM
8

JAN. CL.
12

TOILET
12

EQUIP.
CLOSET
8

PROCESSOR

STAFF CORRIDOR
8

NUCLEAR ROOM #11

8

ROOM #7

307-8

ASSIGNED

STAINLESS
STEEL CORNER
GUARDS
6'-0"

12'-6 1/2"

5 1/2"

5 1/2"

12'-6"

5 1/2"

15'-0"

Enclosure #3

TO: SECURITY PERSONNEL

FROM: DEPARTMENT OF NUCLEAR MEDICINE

SUBJECT: DELIVERIES OF RADIOACTIVE MATERIALS AT NIGHT OR ON WEEKENDS.

Any packages containing radioactive materials which are delivered between 1630hours and 0730hours and on weekends should be handled in the following manner:

Package should be signed for and brought directly to the X-ray department;

Package should be put immediately in the Hot Lab, between Nuclear Medicine Room No. 1 and No. 2; the door should then be re-locked immediately.

In the event the package is wet or damaged, the Security Guard will immediately contact the Radiation Safety Officer and ask the carrier to remain at the hospital until further instructions are given.

Appropriate action will be taken to insure that no traffic will proceed through areas that may be contaminated by radioactive material.

RADIATION SAFETY OFFICER:

NICHOLAS R. RORICK, M.D.

Home Phone : 643-4366

Pager : 894-9995

If not available, call:

John J. Dascher, M.D. : 641-0612 or
(Pager #: 894-9994)

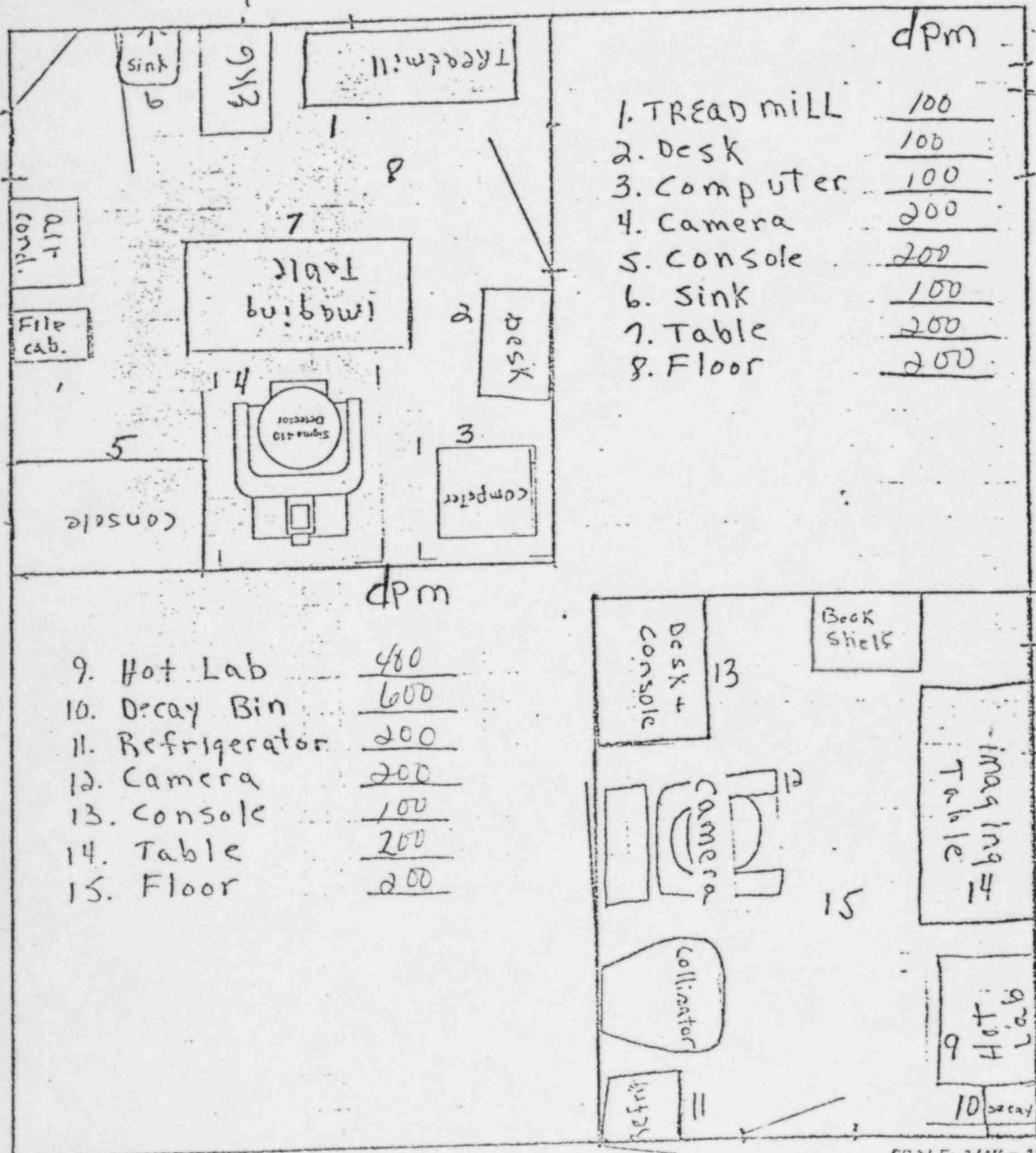
Harold M. Weiner, M.D.
293-1092 (Pager: 894-9993)

Department of Nuclear Medicine

Weekly Room Survey

Date 10-5-84

Technologist: D. Lobko RENA



SCALE: 1/4" = 1'

Name: Severin Teufel, M.D.

Address: ~~92 Sprout Road, Villanova, Pa. 19085~~
464 Glyn Wynne Rd. Haverford, PA, 19041

Nationality: USA

Place of Birth: Seattle, Washington

Date of Birth : 1 April, 1933

Education:

1. The Central High School of Philadelphia

1949-1952; Bachelor of Arts Degree

2. Lafayette College; Easton, Pennsylvania

1952-1956; Bachelor of Arts Degree

3. School of Medicine University of Pennsylvania

1956-1960; Doctor of Medicine

4. Clinical Clerkship in Medicine; Preceptor Prof. Scowen;

The Royal Hospital of St. Bartholomew; London, England; 1959

5. Cook County Hospital; Chicago, Illinois; 1960-1961

Rotating Internship

6. Hospital of University of Pennsylvania; 1963-1967

Resident in Pathology; Anatomic and Clinical

7. Graduate Course in Isotope Methodology; The Hahnemann Medical

College, 1966

8. Graduate Course Orthopedic Pathology - Temple University School

of Medicine 1967

9. Medical Field Service School - United States Army; 1961

10. Basic Course in Clinical Laboratory Instrumentation

Technicon Corp., Ardsley, New York; 1967

11. FELLOW, AMERICAN CANCER SOCIETY, 1965-1966
HOSPITAL OF UNIVERSITY OF PENNSYLVANIA

II. Graduate Course Tissue Typing and Transplantation Immunity

University of Minnesota - 1970

Qualifications:

1. Diplomate of the American Board of Medical Examiners -- 1961
2. Pennsylvania State Medical License -- 1963
3. Certified American Board of Pathology -- Clinical Pathology -- 1968
4. Certified American Board of Pathology -- Anatomic Pathology -- 1968

5. CERTIFIED AMERICAN BOARD OF PATHOLOGY - HEMATOLOGY - 1971
6. RESEARCH EXPERIENCE: " " " " - BLOOD BANKING - 1973

Physiology and Pharmacology of the Pulmonary Circulation .

Preceptor Dr. Domingo Aviado, Professor of Pharmacology,

School of Medicine, University of Pennsylvania -- 1958

Societies:

American Medical Association

American Society of Clinical Pathologists (Fellow)

Pennsylvania Medical Society

College of American Pathologists (Fellow)

Philadelphia Hematologic Society

American Association of Blood Banks

Philadelphia Pathological Society

Pennsylvania Association of Blood Banks

Philadelphia County Medical Society

Greater Philadelphia Hospital Blood Bank Association

Secretary - 1972

ASSOCIATION OF CLINICAL SCIENTISTS (FELLOW)

Appointments:

1. United States Army Medical Corp. ----- 1961-1963

Battalion Surgeon:

46th Field Artillery Group; Seventh Army, Germany

Battalion Surgeon

2nd BT., 33rd Field Artillery; Seventh Army, Germany

Control Officer; Chemical, Bacteriological and Radiological Warfare, Unit Commands

General Medical Officer; Heilbronn Kaserne Dispensary,
Germany

2. Associate in Clinical Pathology; Pepper Laboratory,
Hospital of the University of Pennsylvania, 1967-1970
Philadelphia, Pennsylvania

A. Assistant Director - Blood Bank

B. Assistant Director - Hematology Laboratory

C. Assistant Director - Coagulation Laboratory

D. Assistant Director - Tissue Typing Laboratory

E. Assistant Director - Frozen Blood Laboratory

F. Assistant - Resident Training Program in Clinical Pathology

3. Associate Professor of Pathology - Hahnemann Medical College and Hospital,
Philadelphia, Pa. ----- 1970 -

A. Director of Division of Immuno-hematology and Blood Bank

B. Co-Director, Division of Hematology, Department of
Laboratory Medicine

C. Director, School of Medical Technology, School of Allied Health

D. Director, Tissue Typing Laboratory and Histocompatibility Immunity

E. Director, Resident Training in Clinical Pathology

F. Director, Division of Administration, Department of Laboratory
Medicine

G. Director, Hahnemann Professional Offices - Clinical Laboratory

H. Director, Division of Regional Laboratories

4. Consultant, Department of Health, Education and Welfare
U.S. Government; Community Health Service, HSMHA, DHEW, III
1971-

5. ATTENDING PATHOLOGIST

SACRED HEART HOSPITAL - NORRISTOWN, PA; 1973 -

PHOENIXVILLE HOSPITAL - PHOENIXVILLE, PA; 1973 -

Publications:

1. Blood Typing by an Automated System (Jointly)

Presented in part at the meeting of American Society of
Clinical Pathologists: 1968, Miami Beach, Florida

2. Laboratory Tests in Von Willebrandt's Disease (Jointly) ; presented
at annual meeting of American Society of Clinical Pathologists,
Miami Beach, Florida; 1968

3. Frozen Blood: Presented at annual meeting of American Society of
Medical Technologists; Philadelphia, 1969

4. A Comparative Hematology Study and Quality Control Method using
the SMA-7; Technicon Symposium - 1969, Chicago, Illinois

5. Blood Typing by an Automated System

Current Trends in Blood Banking

Clinical Pathology Seminar

American Society of Clinical Pathologists 1970

6. Enumeration of Peripheral Blood Platelets By An Automated Method

Acta Haematologica (in press)

CURRICULUM VITAE

Alan Richard Weiss
1335 Wentz Drive
Fort Washington, PA 19034

EDUCATION

High School

Cheltenham
Graduated June 1966
Diploma

College

LaSalle
September 1966 - June 1970
BA

Medical School

Temple University
September 1970 - June 1974
M.D.

Internship

Albany Medical Center Hospital
July 1974 - June 1975
Medical

Residency

Diagnostic Radiology
Temple University Hospital
Chief, Marc S. Lapayowker, M.D.
July 1975 - June 1978

Fellowship

Neuroradiology
Temple University Hospital
Chief, Marc S. Lapayowker, M.D.
July 1978 - June 1979

Licensure

Pennsylvania 17336-E
1979

Board Certification

American Board of Radiology
1979

Honors

AOA

MEMBERSHIP

AMA, MCMS, PMS

Appointments

Sacred Heart Hospital
1430 DeKalb Street
Norristown, PA 19401
Attending Radiologist
1979 - present