

COMBUSTION ENGINEERING

'85 MAY 23 10:59

License SNM-1067
Docket No.: 71-9022

10D 71-9022

PDR
Return
to 396SS

May 16, 1985

U. S. Nuclear Regulatory Commission
Washington, DC 20555

Attention: Mr. Charles E. MacDonald, Chief
Transportation Certification Branch
Division of Fuel Cycle & Material Safety, NMSS

Subject: Renewal of Certificate of Compliance 9022, Package
Identification Number USA/9022/AF

Dear Mr. MacDonald:

The subject certificate of compliance for the CE powder shipment container CE-250-2 will expire on June 30, 1985. It is requested that this certificate be renewed for another five year period. Please note that we have made minor changes to the container design, none of which will affect the structural integrity or end use of the container. These changes are detailed in the enclosed drawing, "Shipping Container, NFM-E-Z2175, Rev. 02." In addition, the container will continue to be used in the manner described in the previously approved 9022 certificate, Rev. 7, dated September 6, 1983.

Please note that this request is considered to be an administrative type change and the license fee, as required by 10 CFR 170.31, has been sent directly to the license fee management branch under separate cover.

Very truly yours,

H. V. Lichtenberger

H. V. Lichtenberger
Vice President, Nuclear Fuel
Nuclear Power Systems

HVL/RES/sam
Enclosure



June 85-2
235322
10D
6/6/85
Jackson

8507050412 850516
PDR ADOCK 07109022
C PDR

25290

Power Systems
Combustion Engineering, Inc.

1000 Prospect Hill Road
Post Office Box 500
Windsor, Connecticut 06095-0500

(203) 688-1911
Telex: 99297

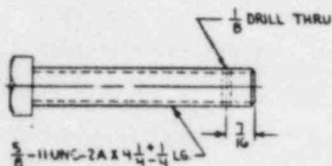
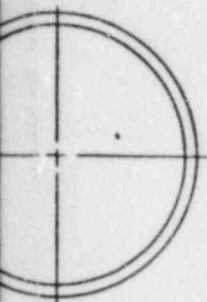
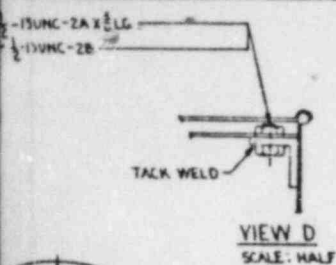
DOCKET NO. 71-9022
CONTROL NO. 25290
DATE OF DOC. 05/16/85
DATE RCVD. 05/23/85
FCUF _____ PDR ☒
FCAF _____ LPDR _____
WM _____ IGE REF. ☒
WMUR _____ SAFEGUARDS _____
FCTC ☒ OTHER _____

DESCRIPTION:

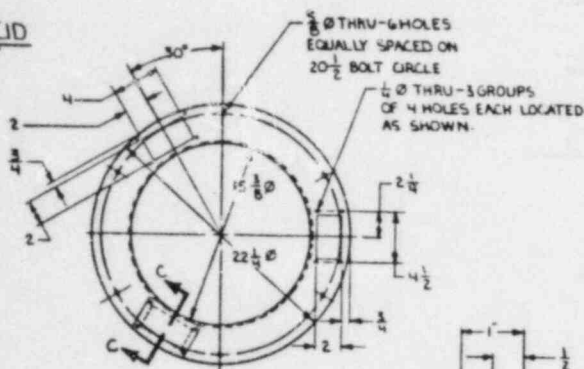
Request renewal
of Certificate
of Compliance

05/24/85 INITIAL Cec

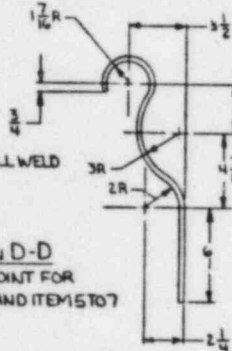




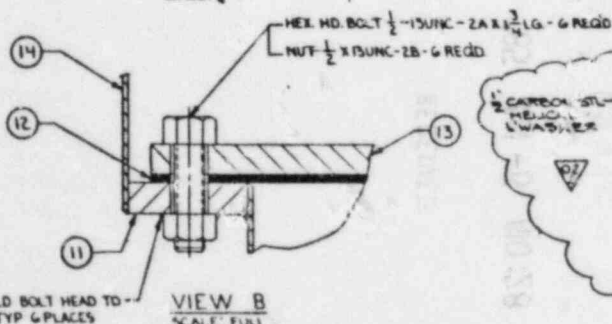
OUTER LID
SCALE: 1/4"=1"



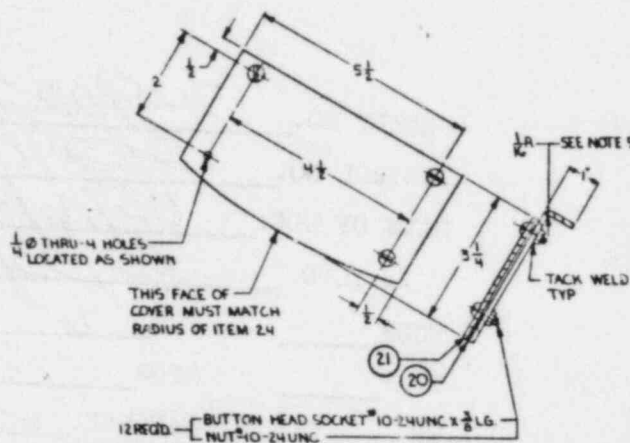
24 FLANGE
SCALE: 3/16"=1"



10 SPRING
SCALE: 1/2"=1"



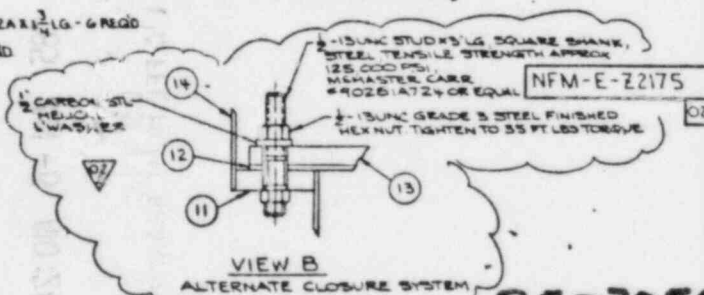
BILL OF MATERIALS					
QUANTITIES ARE FOR					
ITEM NO.	DESCRIPTION	PRICE NO.	MATERIAL	REMARKS	
1	SHIPPING CONTAINER	NFM-E-22175-1			
2	INNER CONTAINER RETAINER				
3	OUTTER BARRIL ASSY				
4	INNER CONTAINER BOTTOM		STEEL	10" DIA THRU	
5	CENTER RING			10" DIA THRU WALL	
6	TOP RING			10" DIA THRU WALL	
7	SIDE STRAP			1" WIDE X 1/2" THK	
8	CONTAINER SIDE			11" DIA STAINLESS STEEL	
9	SPRING SUPPORT (ANGLE)			5/8" DIA X 1/2" THK	
10	SPRING			1/2" DIA SPRING ROD	
11	FLANGE		STEEL	1/2" THK	
12	GAUPE		AL 6061	2" DIA X 1/2" THK	
13	INNER RING		STEEL	1/2" THK	
14	INNER BAND			1/2" DIA X 1/2" THK	
15	SSCAL DRUM (OUTTER BARRIL ASSY)			1/2" DIA X 1/2" THK	
16	OUTTER LID			1/2" THK	
17	TAB (HANDLE)			1/2" THK	
18	HANDLE			1/2" THK	
19	STD THRU GAUGE RING W/ BOLT & NUT		STEEL	1/2" THK	
20	GASKET		NYLON	1/2" THK CUT TO FIT	
21	INSPECTION COVER		STEEL	1/2" THK	
22	SEAL		NYLON RUB	1/2" THK	
23	FEARNICULITE			1/2" THK	
24	FLANGE		STEEL	1/2" THK	
25	CONTAINER BOTTOM		STEEL	1/2" THK	



Also Available On SECTION GC
Aperture Card
SCALE: 3/4"=1"

TI APERTURE CARD

- ALL DIMENSIONS ARE IN INCHES UNLESS OTHERWISE SPECIFIED.
- THIS CORNER MAY BE FABRICATED BY WELDING THE TWO PIECES TOGETHER (FULL SEAM WELD REQUIRED).
- * DIMENSION APPLY TO ITEMS 5 & 6.
- PAIN EXTERIOR AFTER WELDING, IF DAMAGED, WITH ONE COAT OF PRIMER AND ONE COAT OF BLACK ENAMEL.
- REMOVE ALL BURRS AND SHARP EDGES.
- 1" Ø TO BE LESS THAN 1/2" BY 1/8 MIN.



REV	DESCRIPTION	DATE	BY	CHKD	APP'D
1	1-ADDED SECTION D-D TO ITEM 2 PER REV REQ'D.	10/1/75	J. J. J.	J. J. J.	J. J. J.
2	1-REPLACED SECTION D-D TO TOP VIEW OF ITEM 2.	10/1/75	J. J. J.	J. J. J.	J. J. J.
3	2-ADDED ALTERNATE VIEW B.	10/1/75	J. J. J.	J. J. J.	J. J. J.
4	3-CHANGED ITEM 15 TO SQUARE RING.	10/1/75	J. J. J.	J. J. J.	J. J. J.
5	4-CHANGED ITEM 15 TO SQUARE RING.	10/1/75	J. J. J.	J. J. J.	J. J. J.
6	5-CHANGED ITEM 15 TO SQUARE RING.	10/1/75	J. J. J.	J. J. J.	J. J. J.
7	6-DELETED ITEM 15 ON OUTER LID.	10/1/75	J. J. J.	J. J. J.	J. J. J.
8	7-DELETED ITEM 15 ON OUTER LID.	10/1/75	J. J. J.	J. J. J.	J. J. J.

8507050412-01