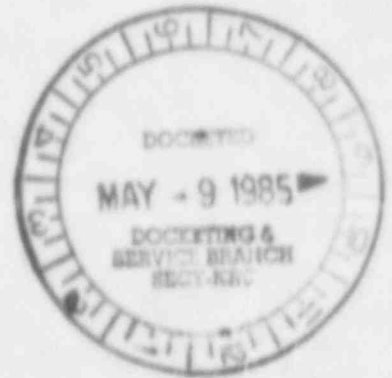


BOROUGH OF SPRING CITY
 CHESTER COUNTY
 RADIOLOGICAL EMERGENCY RESPONSE PLAN
 FOR INCIDENTS AT THE
 LIMERICK GENERATING STATION



NUCLEAR REGULATORY COMMISSION

Docket No. 50-352-353-a Official Ex. No. E-36
 In the matter of LIMERICK
 Staff _____ IDENTIFIED ☒
 Applicant ☒ RECEIVED ☒
 Interviewer _____ REJECTED _____
 Chief of Staff _____
 Contractor _____ DATE 11-28-84
 Other _____ Witness Panel
 Reporter mm

SEPTEMBER 1984

Copy Number _____

PROMULGATION

THIS PLAN SUPERCEDES ALL OTHER BOROUGH OF SPRING CITY PLANS DEVELOPED FOR
EMERGENCY MANAGEMENT IN THE EVENT OF AN INCIDENT AT THE LIMERICK GENERATING
STATION. THIS PLAN WAS APPROVED BY THE MAYOR/COUNCIL UNDER RESOLUTION

_____ DATED _____.

MAYOR/BOROUGH COUNCIL

PRESIDENT

EMERGENCY MANAGEMENT COORDINATOR

BOROUGH OF SPRING CITY

MAYOR

RECORD OF CHANGES

[illegible]

ANNUAL REVIEW CERTIFICATION

I hereby certify that I have reviewed the Borough of Spring City Radiological Emergency Response Plan (RERP). All necessary changes have been coordinated through the county and incorporated into the plan. Distribution of changed pages has been made to all recorded holders of the plan.

Date	Signature

TABLE OF CONTENTS

	<u>Page</u>
Promulgation.....	i
Record of Changes.....	ii
Annual Review Certification.....	iii
Table of Contents.....	iv
I. Introduction	
A. Authority.....	1
B. References.....	1
C. Purpose.....	1
D. Scope.....	1
E. Definitions.....	2
F. Objectives.....	6
II. Basic Plan	
A. General.....	7
B. Municipal Government Emergency Operations.....	7
1. Municipal Government - Emergency Organization Structure.....	7
2. Responsibilities.....	7
3. Emergency Services.....	8
4. Emergency Operations Center.....	10
C. Communications.....	11
D. Alert/Notification Systems.....	11
1. Municipal.....	11
2. Public.....	12
a. Public Alert System.....	12
b. Route Alerting.....	12
c. Hearing Impaired.....	13

E.	Protective Actions.....	13
1.	Sheltering.....	13
2.	Evacuation.....	13
a.	Selective Evacuation.....	13
b.	General Evacuation.....	13
c.	Authorization and Control.....	13
d.	Evacuation Routes.....	14
e.	Transportation.....	14
f.	Traffic Control Points.....	15
g.	Schools.....	15
h.	Health Care Facilities.....	15
i.	Access Control/Area Security.....	15
j.	Emergency Fuel Supplies.....	15
k.	Roadway Clearing.....	16
l.	Continued Fire Protection.....	16
m.	Agriculture.....	16
F.	Radiological Exposure Control.....	16
G.	Continuity of Government.....	19
H.	Training.....	19
I.	Concept of Operations.....	19
1.	Unusual Event.....	19
2.	Alert.....	20
3.	Site Emergency.....	20
4.	General Emergency.....	21
5.	Reentry.....	22
J.	Plan Maintenance and Distribution.....	22

III. Attachments

A.	Plume Exposure Pathway EPZ Map.....	A-1
B.	Organizational Chart.....	B-1
C.	Letters of Agreement.....	C-1
D.	Traffic Control Points.....	D-1
E.	Route Alerting.....	E-1
F.	Residents with Special Medical Requirements.....	F-1
G.	Persons Requiring Transportation Assistance.....	G-1
H.	EOC Floor Plan.....	H-1
I.	Notification List.....	I-1
J.	Evacuation Plan Map.....	J-1
K.	Dosimetry/KI Report Form.....	K-1
L.	Municipal Dosimetry/KI Receipt Form.....	L-1
M.	Emergency Worker Dosimetry/KI List.....	M-1
N.	Emergency Worker Dosimetry/KI Receipt Form.....	N-1
O.	Consolidated Resource List.....	O-1
P.	Municipal Police/Fire/Ambulance Resources.....	P-1
Q.	Evacuation Support Map.....	Q-1
R.	Supporting Plans.....	R-1
S.	Pick Up Points.....	S-1

BOROUGH OF SPRING CITY
RADIOLOGICAL EMERGENCY RESPONSE PLAN

I. INTRODUCTION

A. Authority

The Borough of Spring City Radiological Emergency Response Plan (RERP) has been developed under the authority of, and in accordance with, the provisions of the Pennsylvania Emergency Management Services Act of 1978, P.L. 1332.

B. References

1. U.S. Nuclear Regulatory Commission and the Federal Emergency Management Agency, "Criteria for preparation and Evaluation of Radiological Emergency Response Plans and Preparedness in support of Nuclear Power Plants," NUREG-0654, FEMA-REP-1, Rev. 1, November 1980.
2. Chester County Radiological Emergency Response Plan for incidents at the Limerick Generating Station, dated _____.
3. Commonwealth of Pennsylvania, Disaster Operations Plan, July 1977, with changes.
4. Annex E, "Fixed Nuclear Facility Incidents," dated November 1981, to the Commonwealth of Pennsylvania Disaster Operations Plan.
5. Municipal Resolution No. _____.

C. Purpose

The intent of this document is to provide for the maximum protection of those persons who live, work, or transit Borough of Spring City in the event of an incident at the Limerick Generating Station.

D. Scope

This plan outlines the basic procedures Borough of Spring City will follow in the event of an incident at Limerick Generating Station. It complies with federal guidelines and details municipal actions in accordance with Annex E of the Commonwealth of Pennsylvania Disaster Operations Plan and the Chester County Radiological Emergency Response Plan.

All of the Borough of Spring City lies within the plume exposure pathway EPZ (reference Attachment A and Attachment J). The approximate population is 3389.

E. Definitions

Some of the terminology presented in this document, or which one might encounter during a radiological incident, is somewhat unique. Accordingly, for a better understanding of the RERP it is essential that emergency response personnel familiarize themselves with the following definitions:

1. Access Control Point (ACP) - Control Points manned primarily by State or municipal police, augmented when necessary by the National Guard, established around the perimeter of the plume exposure pathway EPZ on roads leading into it when it is evacuated or occupants are taking shelter for the purpose of controlling access into the area.
2. Activate/Activation - To place a specific plan, or portion thereof, into action.
3. Amateur Radio - Licensed volunteer radio amateur communications personnel affiliated with county emergency management organization. Such organizations include Amateur Radio Emergency Service (ARES) and Radio Amateur Civil Emergency Services (RACES).
4. Central Resource Receiving Point - A predesignated facility operated by the county and located outside the plume exposure pathway EPZ and suitable for the reception and distribution of supplies and equipment.
5. Dosimeters - Devices that measure accumulated exposure to radiation.
6. Emergency Broadcast System (EBS) Announcements - Official announcements made at the county level for the specific purpose of providing instructions or information from the County Commissioners, or their designated representative, to the permanent and transient residents of the county. Announcements are made over the legally designated EBS Network.
7. Emergency Planning Zone (EPZ) - A generic area defined about a nuclear facility to facilitate offsite emergency planning and develop a significant response base. It is defined for the plume and ingestion exposure pathways.
 - a. Plume Exposure Pathway - The area surrounding a fixed nuclear facility which potentially is subject to radiation exposure as a result of an incident involving radioactive material emanating from the facility. Such potential exposure could involve: (a) whole body external exposure to gamma radiation from the plume and from deposited materials, and (b) inhalation exposure from the passing radioactive plume. The EPZ for this pathway consists of an area of approximately ten miles in radius around the fixed nuclear facility. (The exact size and configuration of each plume

exposure pathway EPZ for the respective fixed nuclear facility in Pennsylvania were determined in relation to local emergency response needs and capabilities as they are affected by conditions such as demography, topography, access routes, and jurisdictional boundaries).

- b. Ingestion Exposure Pathway - That area surrounding a fixed nuclear facility which, as a result of a release of radioactive material, is a potential source of exposure through the ingestion of water and foods, such as milk or fresh vegetables originating there. This EPZ consists of a circular area of 50 miles radius around the fixed nuclear facility.
8. Fixed Nuclear Facility Incident - An event or condition at a nuclear facility which could result in impact on public health and safety. Four incident classes have been developed to facilitate planning and responses:
- a. Unusual Event - An occurrence which indicates a potential degradation of the level of safety of the facility. No releases of radioactive material requiring offsite response or monitoring are expected unless further degradation of safety systems occurs.
 - b. Alert - An occurrence which involves actual or potential substantial degradation of the level of safety of the facility. Any releases are expected to be limited to small fractions of the Environmental Protection Agency (EPA) protective action guideline exposure levels.
 - c. Site Emergency - An occurrence which involves actual or likely major failures of facility functions needed for the protection of the public. Radioactive releases are not expected to exceed the EPA protective action guideline exposure levels except near the site boundary.
 - d. General Emergency - An occurrence which involves actual or imminent substantial core degradation or melting with the potential for loss of containment integrity. Releases can reasonably be expected to exceed EPA protective action guideline exposure levels offsite for more than the immediate site area.

NOTE: The incident classifications of Site and General Emergency should not be confused with a gubernatorial declaration of "State of Disaster Emergency." See definition below.

9. Mass Care Center - Fixed facilities suitable for providing emergency lodging for victims of a disaster left temporarily homeless and capable of providing all essential social services. Feeding may be done within a Mass Care Center (in suitable dining facilities) or nearby.

10. Mobilize - The act of bringing a staff, department, or agency to the strength required to accomplish its mission on a 24-hour basis; including the pre-positioning or movement of equipment or personnel.
11. Municipality - For the purposes of this plan, the terms "municipality" or "municipal government" are defined as referring, singularly or collectively, to cities, boroughs, townships and incorporated towns within the Commonwealth of Pennsylvania.
12. Notify - To inform or report the occurrence of an incident.
13. Parent County - The county in which the facility is physically located.
14. Potassium Iodide (chemical symbol KI) - A drug that offers some protection to the thyroid gland from injury due to accumulation of radioiodine.
15. Protective Action - An action taken to avoid or reduce a projected dose of radiation. Some of the basic actions are:
 - a. Sheltering - Action taken by the public to take advantage of the protection against radiation exposure afforded by remaining indoors, away from doors and windows, and shutting off all sources of outside air during and following the passage of the radioactive plume. Motorists should close all windows and vents.
 - b. General Evacuation - The relocation of the entire population from to plume exposure pathway EPZ.
 - c. Selective Evacuation - The relocation of specific elements of the population, such as pregnant women, pre-school children or the infirm.
16. Protective Action Guide (PAG) - A pre-established projected radiation dose to individuals which warrants protective action.
17. Projected Radiation Dose - An estimate of the radiation dose which affected individuals could potentially receive if protective actions are not taken.
18. RACES or ARES - Radio Amateur Civil Emergency Service or Amateur Radio Emergency Service. Licensed amateur radio operators who are trained and volunteer to provide back-up radio communications as requested by state and county emergency management agencies.
19. REACT - Radio Emergency Action Citizens Team. Licensed citizens band radio operators affiliated with county emergency management agencies.

20. Recall - The RECALL system is a computer based telephone notification system developed specifically for emergency management applications.

Within the application for the Limerick radiological emergency response plans (RERP), the system is located at the County Office of Emergency Management and is programmed with the telephone numbers and message(s) of the key individuals, institutions and special facilities which require notification during the implementation of the RERP.

The system is activated by the county and it sequentially and simultaneously contacts the parties by telephone, provides a pre-recorded message and awaits an acknowledgement code. The system then provides a management report to indicate the calls which have been made, the status (no answer, answer, busy, etc.) and other information. If the called party does not furnish the acknowledgement code, the system will continue to call the party until the code is received or another parameter is reached. busy lines will be re-tried and alternate numbers are used for after hours or in the event a contact cannot be made at the primary number due to busy, no-answer, or failure to acknowledge.

21. Reception Center - A predesignated site outside the plume exposure pathway EPZ through which evacuees will pass to obtain information and directions to Mass Care Centers.
22. Risk County - A county with area located partially or wholly within the plume exposure pathway EPZ of a nuclear facility.
23. Risk Municipality - A municipality with area located partially or wholly within the plume exposure pathway EPZ of a nuclear facility.
24. Route Alerting - As a supplementary alert/notification procedure, route alerting will be conducted as necessary each time the public alert system is activated. Route alerting is a municipal responsibility and is to be accomplished by pre-designated route alert teams travelling along pre-assigned routes delivering the following message: "There is an emergency at the Limerick Generating Station; please tune to your Emergency Broadcast Station."
25. Standby Status - The term used to describe state of readiness. Standard operating procedures have been reviewed; material, communications and required supplies are available and adequate for initial operations; and sufficient personnel are on hand to commence operations. Augmentation personnel necessary for sustained operations are alerted and ready to report for duty when called.
26. State of Disaster Emergency - A state of disaster emergency exists whenever the Governor issues a declaration of disaster

emergency. A disaster emergency shall be declared by executive order or proclamation of the Governor at any time upon finding that a disaster has occurred or that the occurrence or the threat of a disaster is imminent. The state of disaster emergency continues until the Governor finds that the threat or danger has passed and terminates it by executive order or proclamation, but no state of disaster emergency may continue for longer than 90 days unless renewed by the Governor. The term "state of disaster emergency" is not to be confused with the emergency classification terms called Site Emergency and General Emergency.

27. Support County - The county or counties outside the plume exposure pathway EPZ of a nuclear facility that, through prior agreement, will provide support to a risk county in the event of an incident. Depending on size and location, the same county may be both a risk and support county.
28. Traffic Control Points (TCP) - Police traffic control established at critical road intersections for the purpose of controlling or limiting traffic.
29. Unmet Needs - Capabilities and/or resources required to support emergency operations but neither available nor provided at the respective levels of government.

F. Objectives

1. Define responsibilities, clarify lines of authority, and establish lines of communication.
2. Ensure that planned actions are current and in consonance with those of surrounding jurisdictions, as well as with the Chester County RERP.
3. Identify personnel, resource, and facility requirements necessary for the safe and efficient execution of the Plan.
4. Provide a basis for functional implementing procedures.
5. Ensure that the population of Borough of Spring City is informed as to the basic concepts of the Plan and their possible protective actions.

II. BASIC PLAN

A. General

Because a variety of local government jurisdictions are found within the plume exposure pathway EPZ of the Limerick Generating Station (reference Attachment A), all of which might be expected to implement their respective RERP's simultaneously, the safety of the public can best be served through an emergency plan that is in consonance with those of surrounding jurisdictions, as well as with the Chester County RERP. Accordingly, the Borough of Spring City has been developed in such a manner that it will function harmoniously with other plans without risk of conflict.

B. Municipal Government Emergency Operations

1. Municipal Government - Emergency Organization Structure

- a. See Emergency Organization Chart (reference Attachment B)

2. Responsibilities

- a. Provide an emergency operations center (EOC) with a qualified person (emergency management coordinator) to coordinate the center.
- b. Develop radiological emergency response plans in consonance with the county plan.
- c. Supplement the public alert system to alert the population within the municipality who may not have received the initial alert.
- d. Provide for municipal security to include security of the area if evacuation has occurred.
- e. Provide for fire and rescue protection to include continued fire protection if the area has been evacuated.
- f. In the event of a general emergency classification, ensure that municipal traffic control points are manned in preparation for evacuation.
- g. Provide training for all volunteers operating in the emergency management agency of the municipality.
- h. Ascertain unmet needs and report these to the County Department of Emergency Services.
- i. Maintain a current list of the location of homebound invalids and handicapped persons requiring special medical care and provide for the special needs of these persons including transportation.

j. Facilitate return of evacuees after reentry is recommended.

3. Emergency Services

a. Direction and Coordination

- (1) The Mayor/Council has the responsibility for the safety and protection of the public within the Borough of Spring City, as well as providing direction and control of the emergency organization.
- (2) Under a declaration of disaster emergency, the ultimate direction of emergency services (i.e., firefighting, police, medical and health, rescue, etc.) is the responsibility of the municipality (reference P.L. 1332).
- (3) Supplemental emergency support personnel shall be under the operational control of the municipality.
- (4) Support forces furnished by other political subdivisions shall be under the operational control of the jurisdiction furnishing the force (reference P.L. 1332).
- (5) Because of the multi-jurisdictional scope of a radiological emergency, the county shall exercise responsibility for coordination and support to the area of operations (reference P. L. 1332).
- (6) Normal dispatch and operational procedures will be used whenever possible.
- (7) Coordination between the counties involved shall be accomplished by the Pennsylvania Emergency Management Agency (PEMA).

b. Functional Areas

The following functional areas and associated tasks are essential:

- (1) Emergency Management
 - (a) Develop and maintain the Borough of Spring City RERP.
 - (b) Coordinate emergency operations in accordance with the approved RERP and as directed by the Mayor/Council.
 - (c) Develop and maintain any necessary Letters of Agreement (reference Attachment C).

- (d) Determine unmet needs as a result of RERP implementation and inform the County EOC.
 - (e) Maintain expense records of personnel and resource utilization resulting from RERP implementation.
 - (f) Establish and maintain EOC security during RERP implementation.
 - (g) Participate in training, drills and exercises.
- (2) Law Enforcement (Police Services)
- (a) Ensure that designated Traffic Control Points (TCP's) located within the municipality are manned when necessary (reference Attachment D and Attachment Q).
 - (b) Provide continued area security, conditions permitting, during the emergency.
 - (c) Assist in traffic control during reentry, as necessary.
- (3) Fire Services
- (a) Provide for adequate fire/rescue emergency coverage during a radiological emergency.
 - (b) Provide for route alerting of the population (reference Attachment E).
- (4) Medical/Ambulance Services
- (a) Provide for adequate ambulance coverage during a radiological emergency.
 - (b) Prepare and maintain a list of non-institutionalized residents having special medical requirements (reference Attachment F).
 - (c) Provide guidance to outside ambulance resources upon their arrival at the municipality.
 - (d) Monitor movement of non-ambulatory individuals requiring transportation by ambulance and/or provision of special medical equipment.
- (5) Public Works
- Note: This function assigned to Police Services
- (a) Maintain current listing of equipment resources.

- (b) Assist law enforcement in obtaining material for traffic control purposes.
- (c) When directed by the Borough Council/Mayor, ensure that municipal roadways are clear.

(6) Radiological

- (a) Receive, prepare for distribution, and distribute to emergency workers dosimeters and radioprotective drugs when necessary.
- (b) Assist in the administration of the County's Radiological Exposure Control Program.
- (c) At termination of the emergency, collect dosimeters, forms, and unused radioprotective drugs from emergency workers, inventory, and prepare for return to the County EOC.
- (d) Ensure the training of Municipal EOC personnel and emergency workers in the use of dosimeters and KI.

(7) Transportation

Note: This function assigned to Medical Services.

- (a) Prepare and maintain a list of those residents who lack transportation (reference Attachment G).
- (b) Provide for the direction and control of outside transportation resources upon their arrival at the municipality.

(8) Communications

Note: This function is assigned to Emergency Management Coordinator.

Determine requirements for reliable communications with the county and within the municipality specific to KERP implementation.

4. Emergency Operations Center (EOC)

- a. The Borough of Spring City EOC is located at the Borough Building Hall and Church Streets. See EOC floor plan (reference Attachment H).
- b. It shall be activated when directed by the Emergency Management Coordinator (EMC) or by the Mayor/Council.
- c. When activated, it shall be staffed by:

- (1) Emergency Management Coordinator
 - (2) Police Service Officer
 - (3) Fire Service Officer
 - (4) Medical/Ambulance Service Officer
 - (5) Radiological Officer
- d. The EOC shall function as a central point for coordinating the operations of the Borough of Spring City emergency response personnel.
 - e. For incident classifications of "Site Emergency" and higher, operations shall be conducted 24-hours a day. Sufficient personnel should be available to maintain 24-hour operation.
 - f. The alternate EOC is located at the Chester County Library in Exton.

C. Communications

1. Telephone

The primary means of communicating to/from the Municipal Emergency Operations Center (EOC) will be the telephone.

2. Two-Way Radio

The usual police and emergency service radio nets will be used for the dispatch of emergency services and the dissemination of information.

3. ARES

The County will provide a ARES operator and radio to the EOC at an emergency classification of Alert or immediately if the initial classification is higher. This system will provide back-up communications capability.

4. UHF Radio

There is two-way radio communication capability between municipal EOC's and the County on a UHF emergency management frequency.

5. Rumor Control

Rumor control will be handled at the County level. The telephone number is 431-6480.

D. Alert/Notification Systems

1. Municipality/Emergency Response Personnel

- a. In the event of an incident at the Limerick Generating Station, initial notification, classification changes, protective actions, and status reports will be provided to the Spring City Borough Emergency Management Coordinator (EMC) or his designated alternate(s) via the RECALL system as activated by Chester County.
- b. The Borough of Spring City elected officials and EUC staff will be notified by the EMC or designated alternate (reference Attachment I).
- c. Incident classification, protective action and other action-related information provided by the County through the UHF Emergency Management NET or ARES will be confirmed by a County-initiated telephone call.

2. Public

a. Public Alert System

- (1) When required, the public will be alerted through a public alert system installed and maintained by Philadelphia Electric Company.
- (2) The system consists of approximately 165 high output mechanical sirens strategically located throughout the approximate ten-mile emergency planning zone. Those sirens located within Chester County will be activated by the County Department of Emergency Services.
- (3) The siren coverage areas for Spring City Borough are depicted in Attachment E, Tab 1.
- (4) In coordination with PEMA, the public alert system may be activated (a) when there is significant information that will reassure the public of their safety; (b) when the public is to be informed of a plant status that may lead them to implement specific actions on their own; or (c) when specific actions (to include protective actions) are to be taken by the public. The purpose of the public alert system is to alert the public to tune to their Emergency Broadcast System (EBS) radio or TV station for information and instructions.
- (b) Notification is accomplished through the EBS. Pre-written EBS announcements are contained in Annex D of the Chester County RERP.

b. Route Alerting

- (1) Route alerting involves the use of vehicles/personnel traveling predesignated routes within the municipality. Public address systems are used to instruct residents to tune to their EBS station. This procedure is used

as a supplement to the public alert system where there is a known system failure or areas of inadequate coverage.

- (2) The municipality has been divided into sectors facilitating route alert team assignments (reference Attachment E).
- (3) Route alert teams will be dispatched via normal dispatch procedures to those areas where there is a known failure of the public alert system.

c. Hearing Impaired (reference Attachment F)

Separate personnel will be charged with alerting the hearing impaired. They will be dispatched by the Borough EMA to the residences of previously identified hearing-impaired persons immediately upon the activation of the public alert system. The hearing-impaired will be provided a pre-printed card which indicates that an emergency situation exists, directs them to review their public information brochures and requests them to establish contact with a relative, friend or neighbor who can provide them with information being provided over the EBS network (reference Attachment E)

E. Protective Actions

1. Sheltering

The nature of an incident may be such that the most effective measure to protect the public would be to have them go indoors, stay away from windows and doors, and shut off all sources of outside air (air conditioning, vents, etc.); motorists would be instructed to close windows and vents.

2. Evacuation

Evacuation is a protective action option which involves movement of the population from the plume exposure pathway EPZ. It may be accomplished on a selective or general basis.

a. Selective Evacuation

Selective evacuation involves the relocation of specific categories of persons, such as pregnant women, pre-school children, and others who may be highly susceptible to the hazards of radiation.

b. General Evacuation

General evacuation involves the relocation of the entire population from the plume exposure pathway EPZ.

c. Authorization and Control

- (1) The Governor, or his constitutionally designated successor, has the sole authority and responsibility for directing and compelling a selective or general evacuation.
- (2) The Governor, or the highest ranking elected county or municipal official in authority may recommend an evacuation for their respective jurisdictions.
- (3) PEMA has the primary responsibility for directing and controlling an evacuation order made by the Governor.

d. Evacuation Routes

- (1) When necessary, Borough of Spring City will be evacuated via local routes to Bridge Street to Rt. 724 East to Rt. 23 East to Rt. 113 South to Rt. 100 South (reference Attachment J and Attachment Q). Those persons who require mass care support should go to the reception center located at the West Whiteland Township Building* where they will be directed to an appropriate mass care center.
- (2) There will be no changes in normal traffic patterns in and out of the EPZ during an evacuation. This is necessary to accommodate the movement of support resources, i.e., buses, ambulances, etc., into the area.

e. Transportation

- (1) The primary means of evacuation will be the private automobile. Evacuees will be urged to use any available means of private transportation.
- (2) Information concerning persons without a source of private transportation is found in Attachment G. Unmet transportation resource requirements will be reported to the county transportation officer.
- (3) Individuals without transportation should contact the Borough of Spring City EUC at 948-3660 to arrange for pickup.
- (4) Transportation resources will be assembled at the Municipal staying area located at the Borough Building (reference Attachment Q). An emergency worker will be assigned to each vehicle for the purpose of providing directions to the assigned pick up points for those persons requiring assistance. These individuals will be taken to the designated reception center; from there they will be taken to a mass care center.

*Agreement pending.

- (5) Transportation requirements for hospitals, nursing homes and public and private schools have been prearranged and will be coordinated by the county. Transportation resources allocated for evacuation of the aforementioned facilities are identified in the county RERP and are not considered as municipal transportation resources.
- (6) Individuals requiring evacuation by ambulance or other special vehicle (reference Attachment F) will be relocated to the Pocopson Home in West Chester. Unmet ambulance resource requirements will be reported to the county medical officer.

f. Traffic Control Points (TCP)

Spring City Police Department personnel will establish Traffic Control Points within the Borough (reference Attachment D).

g. Public/Private Schools

- (1) Separate school plans have been developed to provide for the safety of school children. A copy can be found in the Borough EOC.
- (2) If school is in session at the time evacuation is recommended, children attending schools located within the emergency planning zone will be transported by bus to designated host schools outside the area. They will remain under school supervision until picked up by parents or guardians. These host schools have been planned to coincide with main evacuation routes.
- (3) Students whose homes are inside but who attend school outside the emergency planning zone will not be sent home if a protective action is advised. They will remain at the school they attend under school supervision until picked up by parents or guardians.
- (4) Specific information concerning host schools will be provided to parents by school officials.

h. Health Care Facilities

Separate plans have been developed for hospitals and nursing homes located within the Plume Exposure Pathway EPZ. A copy can be found in the Chester County EOC. There are no health care facilities located in Spring City at this time.

i. Access Control Points/Area Security

In the event of either protective action recommendations (sheltering and/or evacuation), Access Control Points will

be established around the perimeter of the EPZ. These points are described in the Chester County RERP. There are, however, no ACP's in Spring City. Additionally, conditions permitting (based upon information received from the County EOC), police personnel will provide security patrols throughout the Borough during the emergency.

j. Emergency Fuel Supplies

Designated gas stations along main evacuation routes will be open to provide emergency supplies of gasoline and diesel fuel to evacuees. These stations are identified within Annex K of the County RERP.

k. Roadway Clearing

- (1) Removal of disabled vehicles from evacuation routes shall be accomplished by services dispatched through the County.
- (2) Snow and other debris on evacuation routes shall be removed by PennDOT and the Borough of Spring City.
- (3) The National Guard will provide supplemental support, as necessary.

l. Continued Fire Protection

- (1) After the evacuation of the general population has been completed, essential Fire Department equipment and personnel will relocate to a point outside the EPZ (reference II, G, 2, b) non-essential equipment will be sheltered.
- (2) In the event a fire is reported in Spring City Borough, the department having jurisdiction, if available and conditions permitting, will be dispatched by the County EOC. Normal turnout gear should provide adequate external contamination protection; respiratory protection should prevent the inhalation of radioactive material. See Annex M of the County RERP for additional information.

m. Agriculture

If evacuation becomes necessary, the Chester County DES, through the USDA County Agent, will certify farmers as emergency workers. This will allow them to return to the EPZ in order that they may tend to their livestock. See Annex U of the County RERP for additional information.

F. Radiological Exposure Control

If it is determined that a potential radiation hazard exists from an incident at the Limerick Generating Station, steps must be taken to protect both the public and emergency workers. Procedures for radiological exposure control are addressed in Annex M of the County RERP. Borough actions relevant to radiological exposure control follow:

1. Borough Emergency Workers

- a. When advised by the Chester County DES that a Site Emergency has been declared, municipal emergency workers will be issued dosimeters and potassium iodide (KI), a radioprotective drug. A unit of dosimetry-KI contains the following:

- * one (1) CD V 730 or DCA-622 self-reading dosimeter having a scale of 0 to 20R.
- * one (1) CD V 742 self-reading dosimeter having a scale of 0 to 200R.
- * one (1) thermoluminescent dosimeter (TLD) which is a machine-read crystalline dosimeter mounted in a card.
- * one (1) Dosimetry-KI Report Form (reference Attachment K).
- * one (1) bottle containing a fourteen day supply of potassium iodide (KI) tablets.

- b. PEMA will supply, when available, the County DES with enough dosimeters and KI for designated emergency workers within its portion of the plume exposure pathway EPZ. These resources will be predistributed to the Borough. Attachment M lists emergency worker dosimetry-KI resource requirements.

- c. Distribution of the dosimeters and KI is as follows:

- (1) Upon notification of an Alert (or any higher classification of emergency should it be initial notification), the equipment will be prepared for distribution to municipal emergency workers. (reference Attachment L).
- (2) Upon notification of a Site Emergency, dosimeters and KI will be distributed to borough emergency response organizations identified in Attachment M. A signed receipt shall be obtained from each organization (reference Attachment L). Emergency organizations will maintain property control by having each worker sign for the property (reference Attachment N).
- (3) Emergency workers will take KI only upon the direction of the Secretary of the Pennsylvania Department of Health, notification of which will be received through emergency management channels.

d. Dosimetry Reading Procedures and Related Actions

- (1) Dosimeters are to be worn in the pocket of an outer garment from the time of issue until the worker is dismissed from duty. In no case should the TLD be worn by more than one person since there is no way of ascertaining later how much of the dose recorded on the TLD was received by each individual if more than one person was involved.
 - (2) Each emergency worker is responsible for completing the Dosimetry/KI Report Form (reference Attachment K) and for reading the self-reading dosimeters at least once every thirty minutes. The protective action guide for whole body exposure is 25 rem. Therefore an emergency worker should seek to be relieved or complete the assigned task and then evacuate to an emergency worker decontamination station before receiving 25 R.
 - (3) Life Saving Missions - If a life saving mission should become necessary, the Spring City Borough elected official in charge may, under conditions shown below, authorize volunteer emergency workers to exceed the established 25 rem whole body limit. In no instance, however, should the emergency worker be authorized to exceed an absolute upper limit of 75 rems. This authorization may be given in advance to avoid the possibility of delay in performing life saving missions. When authorizing volunteer emergency workers to exceed the 25 rem limit, the elected officials should ensure that the following conditions are met:
 - (a) It is a life saving situation and alternative courses of action cannot be taken to accomplish the mission.
 - (b) The emergency workers are healthy adult male volunteers, preferably over 45 years of age.
 - (c) The emergency workers selected are persons whose normal duties might involve such missions, e.g., policemen and firemen with suitable protective clothing and respiratory equipment.
 - (d) The mission will be accomplished in the least amount of "stay time."
 - (e) The emergency workers are knowledgeable of and accept the increased risk in exceeding the 25 rem limit.
- e. Upon completion of emergency tasks during a contaminating incident, each emergency worker is to report to a decontamination station. Emergency workers in Borough of

Spring City are to report to Lionville Fire Company, Village Avenue, Lionville, PA. Specifics relevant to monitoring and decontamination are contained in Annex M of the County RERP.

- f. When the emergency is terminated, all dosimeters-KI should be returned to the Borough EUC for forwarding to the County.

2. Public

The protective actions outlines in Section II, E, are intended to provide the necessary radiological exposure control for the general public. In addition, decontamination monitoring teams will service all mass care centers, and host health care facilities for the purpose of monitoring evacuees. A list of decontamination stations is provided in the County RERP.

G. Continuity of Government

1. Government

In the event of a general evacuation, the Mayor/Council shall transact required business at an alternate seat of government located at the Chester County Library in Exton.

2. Municipal Services

- a. The Police Department will relocate to Uwchlan Township Building.
- b. The Fire Department will relocate to Lionville Fire Company.
- c. The Ambulance Service will relocate to Lionville Fire Company.
- d. The Rescue Squad will relocate to Lionville Fire Company.
- e. All services will remain available to respond to emergencies within the EPZ, radiation levels permitting. Dispatch will be accomplished through the County EUC.

3. EUC

The EUC shall be relocated to the Chester County Library in Exton.

H. Training

- 1. The Chester County Department of Emergency Services is responsible for coordinating radiological emergency response training as outlined in Annex R of the County RERP.
- 2. The Borough of Spring City Emergency Management Coordinator shall ensure that local emergency response personnel are familiar with their responsibilities.

I. Concept of Operations

The following offers a list of general actions to be performed in the event of an incident.

1. Unusual Event

As per County policy, notification to Municipal EMC's will not take place.

2. Alert

- a. The Borough of Spring City Emergency Management Coordinator (EMC) will receive notification from Chester County DES. The EMC in turn, notifies Borough officials and key staff personnel.
- b. The EMC and key staff will report to the Borough EUC. Security measures will be implemented to restrict admittance.
- c. Communications systems will be tested. The County will be notified when ARES communications are established.
- d. Dosimeters will be prepared for later distribution.
- e. Non-ambulatory residents shall be contacted to verify special requirements.
- f. The EMC shall notify certain public and private institutions/facilities located within the municipality of the emergency. In some instances, this will be a verification of a notification previously received through a county-initiated procedure. A listing of these facilities is available in the Borough EUC.
- g. Route alert teams will be placed on standby.
- h. If the public alert system is activated, the hearing impaired will be notified and route alert teams dispatched as necessary.
- i. Local TCP personnel will be notified.
- j. The local EBS station WCAU 1210 AM or WCOJ 1420 AM will be monitored.
- k. Review Borough and County Radiological Emergency Response Plans.
- l. Ensure all messages which provide information or require a response are verified and logged. Pertinent data will be posted on the status board.

- m. The County Municipal Liaison Officer will be notified upon completion of tasks as well as for additional unmet needs.
- n. In the event of reduction of classification or termination of incident, all parties previously notified will be informed.

3. Site Emergency

- a. Same actions as Alert.
- b. Additional emergency response personnel will be mobilized, including full EUC staff.
- c. Dosimeters and KI will be distributed to emergency workers and organizations.
- d. Resource inventories (reference Attachment U and Attachment P) will be reviewed to verify that those resources indicated as being available are, in fact, available.
- e. Road conditions will be reviewed, reporting any detours or construction areas to the County Public Works Officer.
- f. Local TCP personnel will be placed on standby. Spring City TCP's will be manned if local conditions dictate.
- g. Drivers and transportation assets needed for persons without transportation will be mobilized by the County.
- h. In the event of reduction of classification or termination of incident, all parties previously notified will be informed; dosimeters and KI will be prepared for return to the County.

4. General Emergency

- a. Same actions as Alert and Site Emergency.
- b. Alerting of special population groups, i.e., hearing impaired will begin at the time the public alert system is activated.
- c. Route alerting will commence in those areas of known public alert system failure or areas of inadequate coverage. Information identifying the specific areas involved will be provided by the County.
- d. If sheltering is recommended:

Increase security measures will be provided, conditions permitting.
- e. If evacuation is ordered:

- (1) Guidance to transportation resources dispatched through County transportation staging areas will be provided by the Borough to assist those without transportation.
 - (2) Homebound invalids will receive evacuation assistance.
 - (3) If necessary, fire, police, rescue, ambulance services and seat of government will be relocated after general population has evacuated or upon completion of assignments.
 - (4) Traffic control points located within the municipality will be manned.
- f. When directed by Pennsylvania Department of Health, instruct emergency workers to take KI.
 - g. In the event of reduction of classification or termination of incident, all parties previously notified will be informed; dosimeters and KI will be prepared for return to the County.
5. Reentry
- a. Authorization for reentry will come from the Governor upon determination that it is safe to do so.
 - b. The Borough of Spring City officials and Emergency Management Coordinator shall:
 - (1) Return to the local EOC.
 - (2) Reestablish safety and security services.
 - (3) Report damage caused by evacuation and reentry, as well as costs of support operations to County EOC.

J. Plan Maintenance and Distribution

1. Maintenance

- a. The Borough of Spring City Emergency Management Coordinator is responsible for ensuring the currency of the Borough RERP, including the development and distribution of all changes, as well as accomplishing an annual review.
- b. All changes to the Borough of Spring City RERP shall be coordinated through the Chester County Department of Emergency Services.
- c. All changes to the Borough of Spring City RERP which involve policy or procedure shall be approved by Mayor/Council.

- d. The current date shall be placed on any page that is changed.

2. Distribution

- a. Chester County EOC (copies to accommodate distribution to PEMA and Philadelphia Electric Company)

Copy Numbers 1-4 4 copies

- b. Borough of Spring City, Mayor and Council
Copy Numbers 5-13 9 copies

- c. Emergency Management Coordinator and Staff

Copy Numbers 14-21 8 copies

- d. Police Department

Copy Numbers 22 1 copy

- e. Fire Department

Copy Number 23 1 copy

- f. Spring-Ford Rescue

Copy Number 24 1 copy

- g. Spring City Ambulance

Copy Number 25 1 copy

- h. Municipal library

Copy Number 26 1 copy

Total Copies 26

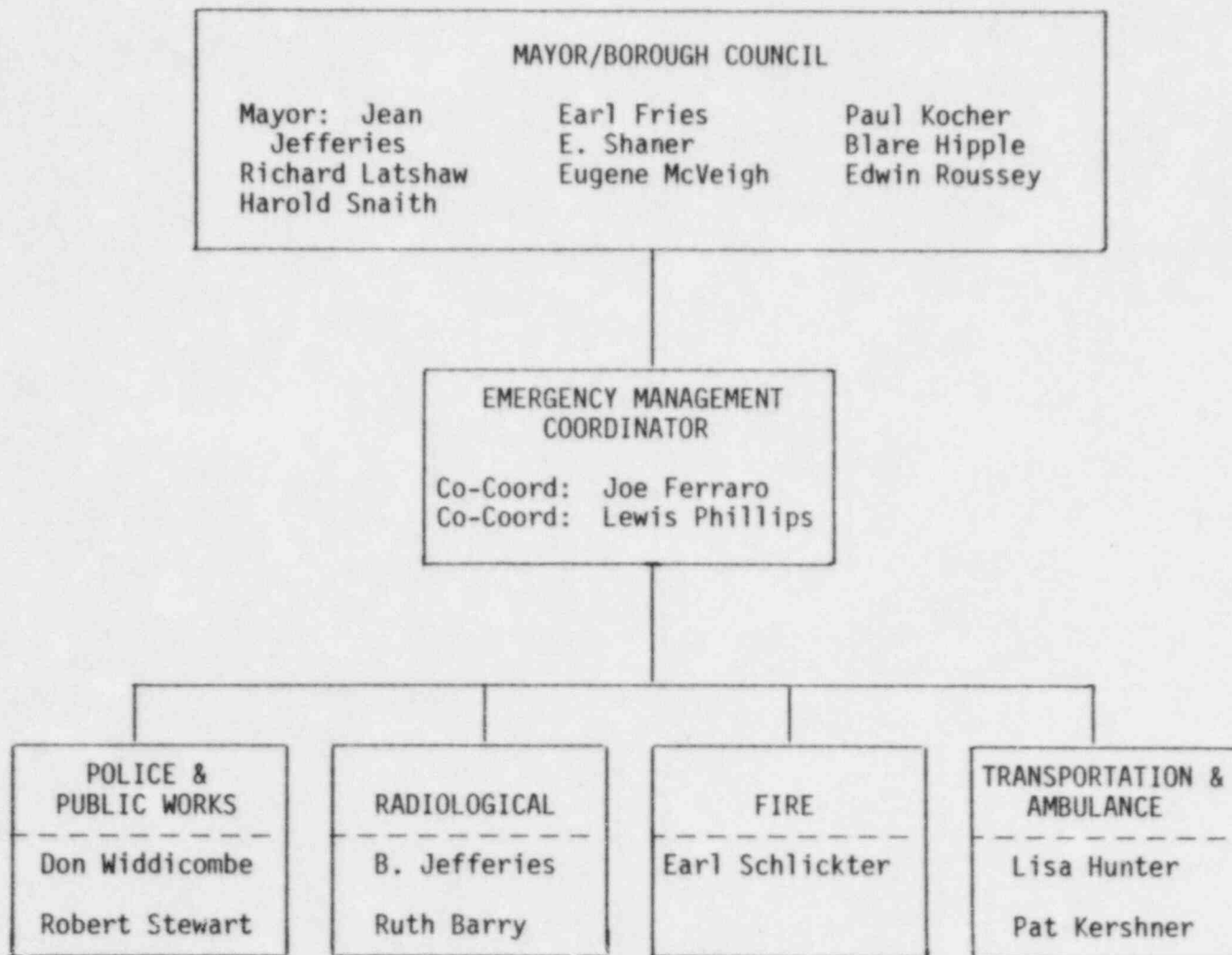
Additional copies of the plan can be made available upon specific request and justification to the Spring City Emergency Management Coordinator. As revisions are made to the plan, properly identified change pages will be sent to all organizations, agencies and individuals holding a copy of the plan.

PLUME EXPOSURE PATHWAY

EPZ MAP

Map will be inserted in final draft.

BOROUGH OF SPRING CITY EMERGENCY ORGANIZATIONAL CHART



LETTERS OF AGREEMENT

I. Purpose

To document the arrangements made between Borough of Spring City and those agencies providing the personnel and resources needed to successfully implement this plan.

II. Agreement providing and Maintenance

The Borough of Spring City Emergency Management Coordinator shall be responsible for:

- A. Determining the need for specific letters of agreement.
- B. Developing their general content.
- C. Updating them as necessary.

III. Specific Agreements

None required at this time.

TRAFFIC CONTROL POINTS

<u>Post Number</u>	<u>Location</u>	<u>Responsible Police Organization</u>	<u># Officers Assigned</u>
Spring City 1	Main St. & Bridge St.	Spring City	2
Spring City 2	Wall St. & New St.	Spring City	1
Spring City 3	Pikeland Ave. & Wall St.	Spring City	1

ROUTE ALERTING

At least two (2) persons will be named to each alert team.

Each route alert team will be supplied with a map of the assigned sector (reference Tab 1). Alert teams will issue the following message:

"There is an emergency at the Limerick Generating Station; please tune to your Emergency Broadcast System Station WCAU 1210 AM WCOJ 1420 AM."

Additional route alert personnel will directly contact: (1) any individuals along their designated route who have been identified as hearing impaired in this plan to ensure they have received notification, (reference Tab 2); and (2) transient locations to ensure notification has been received.

Sector No. 63-A Alert Team: Liberty Fire Company

Leader: **
Assistant: **
Transient Location: Shopping Plaza
Hearing Impaired Individuals*:

Sector No. 63-B Alert Team: Liberty Fire Company

Leader: **
Assistant: **
Transient Location: Spring City Pool
Hearing Impaired Individuals*:

Sector No. 63-C Alert Team: Liberty Fire Company

Leader: **
Assistant: **
Transient Location: None
Hearing Impaired Individuals*:

*There are 9 hearing impaired individuals in the municipality. Their names and addresses are on file in the Borough EOC.

**Route alerting will be conducted by fire department personnel. Sufficient, trained members will be mobilized at the time of the incident to man the sector teams. Specific assignments will be made at the time of mobilization from availability lists maintained in the Borough EOC.

ROUTE ALERT

SECTOR MAPS

Map will be inserted in final plan.

MESSAGE - HEARING-IMPAIRED

There is an emergency at the Limerick Generating Station.

Please contact a relative, friend or neighbor so that you can receive important information being broadcast over the emergency broadcast system.

Please review your public information brochure for incidents at the Limerick Generating Station for additional important information.

If you do not have a relative, friend or neighbor nearby to assist you, please tell the individual who gave you this information immediately.

RESIDENTS WITH SPECIAL MEDICAL REQUIREMENTS

- A. There are 5* residents requiring ambulance support in the event of an evacuation. Their names, addresses, and telephone numbers are on file in the municipal EOC.
- B. There are 15* residents who may require special assistance in the event of protective actions. Their names, addresses, and telephone numbers are on file in the municipal EOC.
- C. There are 19* hearing impaired individuals in the municipality. Their names and addresses are on file in the Municipal EOC.

*Based upon public survey data.

Note: These individuals will be contacted by the Medical/Ambulance Service Officer at Alert to confirm the status of their medical needs. This list should be updated every six (6) months.

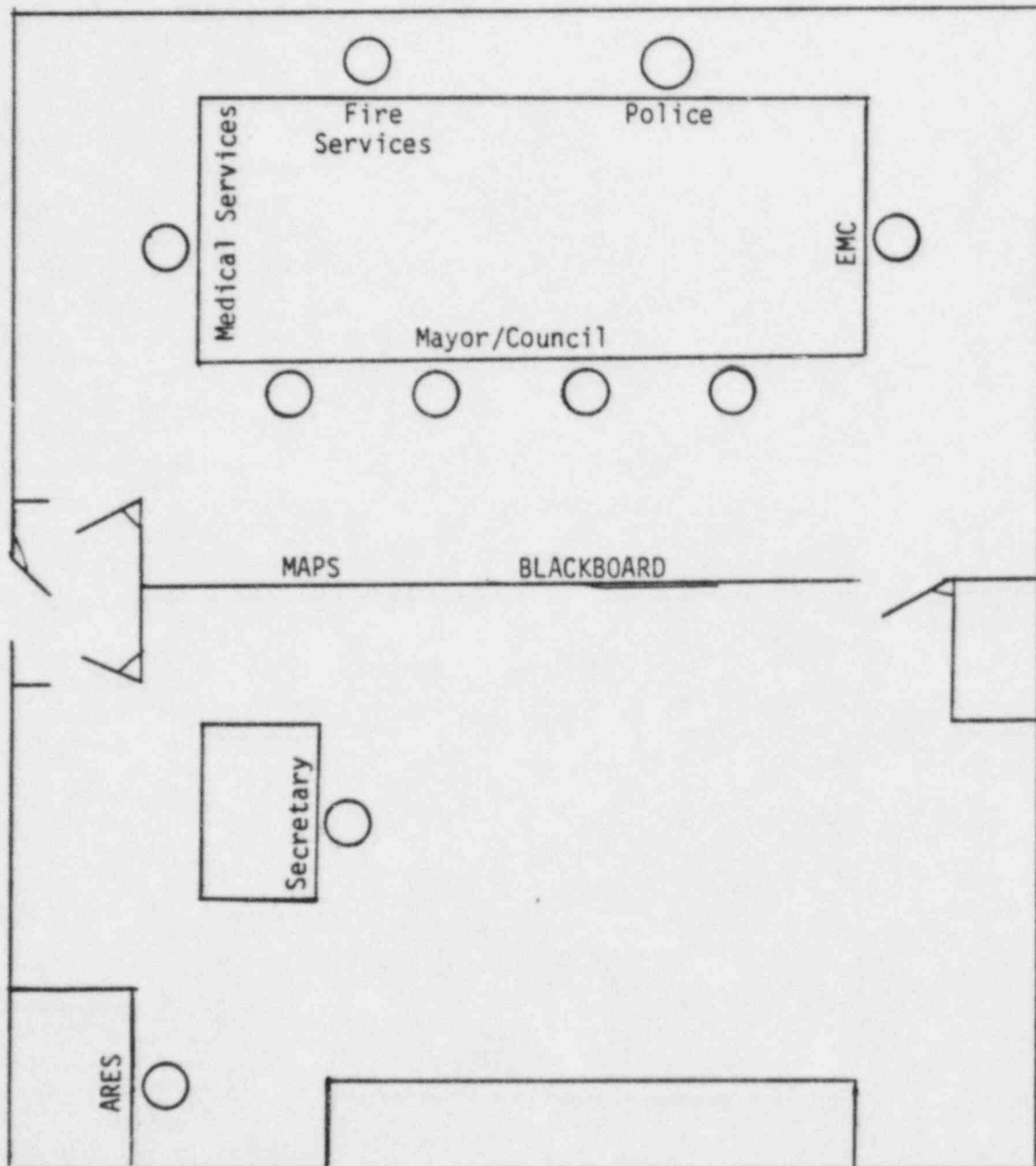
PERSONS REQUIRING TRANSPORTATION ASSISTANCE

There are 89* residents who require transportation assistance in the event of evacuation. Their names and addresses are on file at the municipal EOC.

It is understood that there may be additional individuals who will require transportation assistance on the time of evacuation. These individuals are to contact the municipal EOC to arrange for pickup.

*Based upon public survey data.

FLOOR PLAN - BOROUGH OF SPRING CITY EOC



EMERGENCY NOTIFICATION LIST

1. Mayor/Council

Jean Jefferies, Mayor

Home Phone: _____
Work Phone: _____

Richard Latshaw, President of Council

Home Phone: _____

Eugene McVeigh

Home Phone: _____

Harold Snaith

Home Phone: _____
Bus. Phone: _____

Earl Fries

Home Phone: _____

Earnest Shaner

Home Phone: _____

Paul Kocher

Home Phone: _____

H. Blair Hipple

Home Phone: _____

Edwin Roussey

Home Phone: _____
Bus. Phone: _____

2. Co-Coordinator

Joe FerraroHome Phone: _____
Bus. Phone: _____

Co-Coordinator

Lewis PhillipsBus. Phone: _____
Emergency Pager: _____3. Police/Public Works
Services OfficerDon WiddicombeHome Phone: _____
Bus. Phone: _____

Deputy

Robert StewartHome Phone: _____
Bus. Phone: _____4. Fire/Rescue
OfficerEarl SchlichterHome Phone: _____
Bus. Phone: _____

Deputy

Home Phone: _____
Bus. Phone: _____5. Medical/Transportation
OfficerLisa HunterHome Phone: _____
Bus. Phone: _____

Deputy

Pat KershnerHome Phone: _____
Bus. Phone: _____

6. Radiological

B. Jefferies

Home Phone: _____

Bus. Phone: _____

Deputy

Ruth Bary

Home Phone: _____

EVACUATION PLAN MAP

Map will be inserted in final draft.

County:

PORT FORM

ATTACHMENT K

Emergency Worker's Organization:

Emergency Worker's Signature: X

MISSION			CD V-730 or DCA-622 (O-2OR)			CD V 742 (O-200R)			TLD (thermoluminescent dosimeter)		
No.	Description	Date	SERIAL #	BEFORE AFTER	MISSION TOTAL	SERIAL #	BEFORE. AFTER	MISSION TOTAL	Serial # of TLD:		
1.				R	R		R	R		DATE/TIME	PERSON/ ORGANIZATION
2.				R	R		R	R	Issued		By:
3.				R	R		R	R	Turned In		To:
4.				R	R		R	R	READING OF TLD		
5.				R	R		R	R	m/Rem		
				R	R		R	R	Date of Reading		
				R	R		R	R			
			TOTAL		R		TOTAL	R			
									POTASSIUM IODIDE (KI) RECORD		

THYROID GLAND SCREENING CHECK

CD V 700 Serial #: _____ Reading: _____ mR/hr
Signature of Monitor: X

POTASSIUM IODIDE (KI) RECORD			
	Date	Time	Amount Taken
Day 1			1 tablet/130mg
Day 2			1 tablet/130mg
Day 3			1 tablet/130mg
Day 4			1 tablet/130mg
Day 5			1 tablet/130mg
Day 6			1 tablet/130mg
Day 7			1 tablet/130mg
Day 8			1 tablet/130mg
Day 9			1 tablet/130mg
Day 10			1 tablet/130mg
Day 11			1 tablet/130mg
Day 12			1 tablet/130mg
Day 13			1 tablet/130mg
Day 14			1 tablet/130mg

KI INSTRUCTIONS: Take KI only on the direction of the Secretary of the Department of Health. Take one tablet (130mg) once a day. If you have any adverse reaction to the drug, discontinue taking KI and report to your supervisor.

RECEIPT FORM FOR DOSIMETRY-SURVEY METERS-KI

ISSUED BY _____ ISSUED TO _____
 ADDRESS _____ ADDRESS _____
 RESPONSIBLE INDIVIDUAL _____
 TELEPHONE _____

INSTRUCTIONS: During a nuclear power plant incident, use this form to maintain property control when distributing the items listed below to municipalities and decontamination monitoring teams. This form should be used for transfer of these items in bulk form from: (1) the county emergency management agency to risk municipalities and decontamination monitoring teams; and (2) the municipalities to their local emergency response organizations (such as fire, police, and ambulance associations).

LINE NUMBER	DESCRIPTION	QUANTITY
1.	CD V-742 Self-Reading Dosimeter (0-200R)	
	CD V-730 Self-Reading Dosimeter (0-20R)	
3.	DCA-622 Self-Reading Dosimeter (0-20R)	
4.	CD V-750 Dosimeter Charger	
5.	TLD (Thermoluminescent Dosimeter) Serial Numbers _____ THROUGH _____	
6.	Potassium Iodide (KI) Tablets (Bottles of 14 Tablets Each)	
7.	CD V-700 Survey Meter	
8.	Dosimetry-KI Report Form	
9.	Decontamination Monitoring Report Form	
10.	Receipt Form for Dosimetry-Survey Meters-KI	
11.	Acknowledgement of Receipt by Emergency Workers for Dosimetry-KI and Survey Meters	

RECEIVED BY: _____ TITLE _____
 IF _____ X _____ DATE _____

EMERGENCY WORKER DOSIMETRY-KI LIST

<u>AGENCY</u>	<u>NUMBER OF EMERGENCY WORKERS</u>
A. Emergency Management Agency	
Borough of Spring City	20
Hall and Church Streets	
Spring City, PA 19475	
B. Fire Companies	
Liberty Steam & Fire Company #1	50
Main Street	
Spring City, PA 19475	
C. Ambulance Service	
Spring City Area Ambulance	30
Main Street	
Spring City, PA 19475	
D. Police Department	
Spring City	10
Hall and Church Streets	
Spring City, PA 19475	
E. Rescue Squad	
Spring-Ford Rescue Squad	35
Bridge and Penn Streets	
Spring City, PA 19475	
F. Public Works	
Borough of Spring City	12
Hall and Church Streets	
Spring City, PA 19475	
Total Units of Dosimetry-KI Required	<u>157</u>

CONSOLIDATED RESOURCE LIST

	TOTAL REQUIRED	LOCALLY AVAILABLE	UNMET NEED
A. <u>VEHICLES</u>			
1. Buses ¹	3 ²	0	3
2. Ambulances	3	2 ³	3
3. Vehicles with Loudspeakers	3	10	0
B. <u>PERSONNEL</u>			
1. Route Alerting	6	50	0
2. Transportation	3	3	0
3. TCP	4	10	0
4. Special Assistance	2	2	0
5. Ambulance	1	1	0
6. Communications	2 ARES	0	2 ARES
C. <u>EQUIPMENT</u>			
1. Communications (by type)	Telephones: 3 ARES: 1	Telephones: 3 ARES: 0	Telephones: 0 ARES: 1

¹Resource planning for buses excludes those required for evacuation of schools.

²Based upon an estimate of 40 persons/bus.

³Local ambulance will remain available for emergency response.

Note: Unmet needs will be supplied through the County/PEMA.

MUNICIPAL POLICE/FIRE/AMBULANCE RESOURCES






<u>Police Department</u>	<u>Equipment</u>	<u>Manpower</u>
Spring City Hall and Church Streets Spring City, PA 19475	3 cars	10

<u>Fire Department</u>	<u>Equipment</u>	<u>Manpower</u>
Liberty Steam & Fire Company #1 Main Street Spring City, PA 19475	2 pumpers 1 rescue truck 1 chiefs car 1 assistant chiefs	50

<u>Ambulance</u>	<u>Equipment</u>	<u>Manpower</u>
Spring City Area Ambulance Main Street Spring City, PA 19475	1 ambulance	30

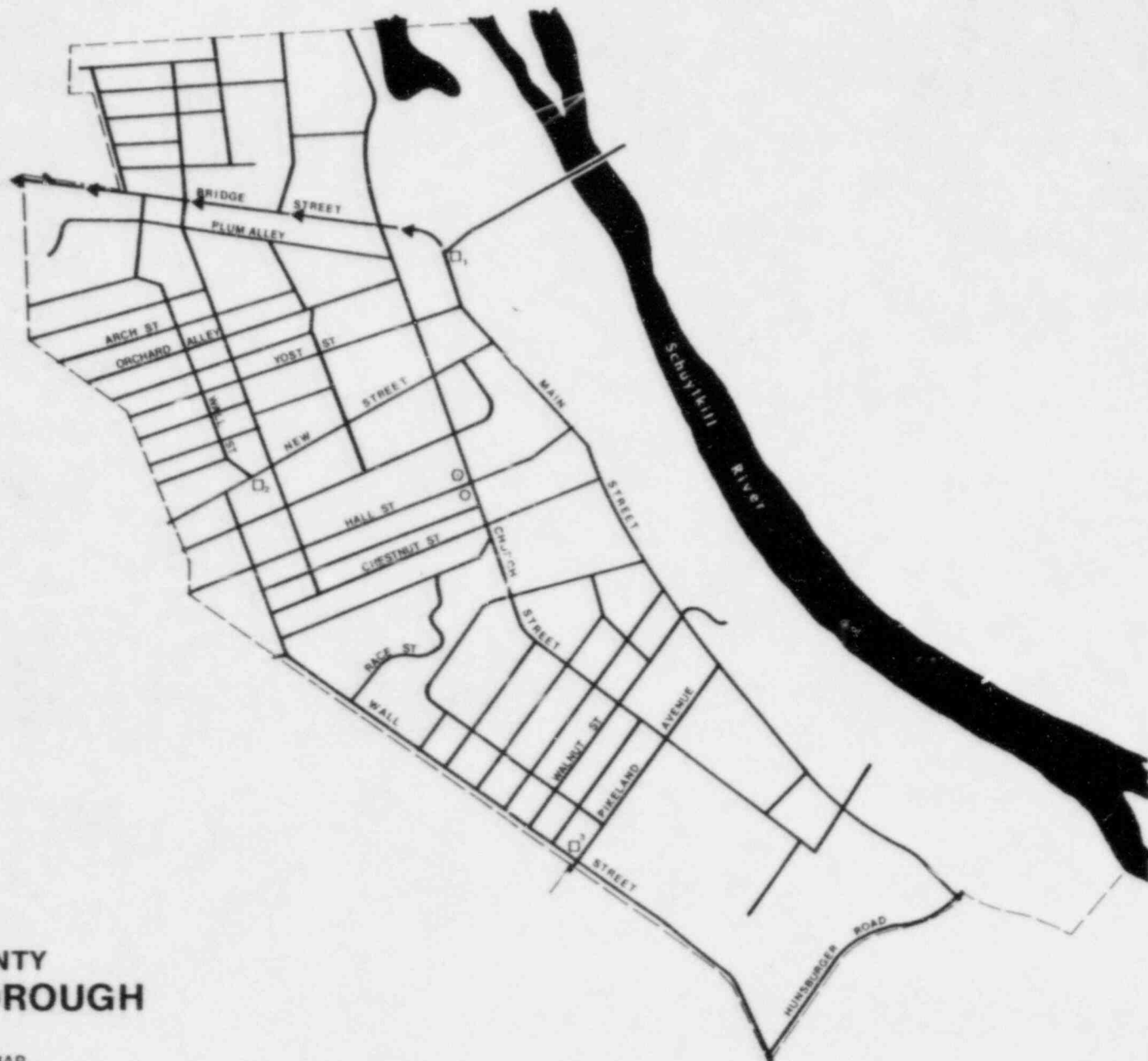
<u>Rescue</u>	<u>Equipment</u>	<u>Manpower</u>
Spring-Ford Rescue Squad Bridge and Penn Streets Spring City, PA 19475	1 ambulance (squad truck) 1 rescue truck 1 blazer (ALS unit) 1 boat	35

LEGEND:

- TOWNSHIP BOUNDARIES
- HIGHWAYS
-  POPULATION AREAS
- COUNTY BOUNDARIES
-  TRAFFIC CONTROL POINTS
-  TRANSPORTATION STAGING AREA
-  EVACUATION ROUTE
-  EMERGENCY OPERATION CENTER

CHESTER COUNTY SPRING CITY BOROUGH

Attachment Q
EVACUATION SUPPORT MAP



SUPPORTING PLANS

Spring-Ford Area School District RERP*

*On file in the Municipal EOC.

PICK UP POINTS