



UNITED STATES
NUCLEAR REGULATORY COMMISSION

REGION IV

611 RYAN PLAZA DRIVE, SUITE 400
ARLINGTON, TEXAS 76011-8064

JAN - 8 1993

Docket No. 50-458
License No. NPF-47

Gulf States Utilities
ATTN: P. D. Graham
Vice President (RBNG)
P.O. Box 220
St. Francisville, Louisiana 70775

Gentlemen:

SUBJECT: SYSTEMATIC ASSESSMENT OF LICENSEE PERFORMANCE REPORT
NO. 50-458/92-99

This refers to the NRC Systematic Assessment of Licensee Performance (SALP) Report for your River Bend Station facility, which was sent to you on November 25, 1992; our meeting on December 3, 1992; and your SALP response letter of December 18, 1992.

Thank you for your review of the SALP report and your participation in the SALP meeting on December 3, 1992. Since you had no corrective comments on the facts presented in the report, no change to the SALP report is warranted and the initial SALP report transmitted to you on November 25, 1992, becomes the final SALP report. The enclosures to this letter consist of a meeting summary, the SALP presentation slides, and a copy of your SALP response letter.

After the SALP presentation, the NRC met with the local officials and the media to reaffirm the NRC's role and address any questions on items of mutual interest.

In accordance with Section 2.790 of the NRC's "Rules of Practice," a copy of this letter and its enclosures will be placed in the NRC Public Document Room.

No reply to this letter is required. However, should you have any questions, I would be pleased to discuss them with you.

Sincerely,

James L. Milhoan
James L. Milhoan
Regional Administrator

Enclosures: (see next page)

9301130007 930108
PDR ADOCK 05000458
G PDR

NRC FILE CENTER COPY

JEH 1/

Gulf States Utilities

-3-

Texas Public Utility Commission
ATTN: Mr. Chet Oberg
7800 Shoal Creek Blvd.
Suite 400N
Austin, Texas 78757-1024

JAN - 8 1993

bcc to DMB (IE40)

bcc distrib. by RIV:

J. L. Milhoan

DRP (2)

Lisa Shea, RM/ALF, MS: MNBB 4503

DRSS-FIPS

RIV File

DRS

Senior Resident Inspector, Cooper

Senior Resident Inspector, Fort Calhoun

The Chairman (MS: 16-G-15)

Commissioner Rogers (MS: 16-G-15)

Commissioner Curtiss (MS: 16-G-15)

Commissioner Remick (MS: 16-G-15)

Commissioner de Planque (MS: 16-G-15)

J. M. Taylor, EDO (MS: 17-G-21)

J. M. Montgomery

Resident Inspector

Section Chief (DRP/C)

MIS System

RSTS Operator

Section Chief (DRP/TSS)

Ann Mattila

J. T. Gilliland, PAO

C. A. Hackney

Records Center, INPO

G. F. Sanborn, EO

B. Murray, DRSS

RRIs at all sites

L. J. Callan, D:DRSS

J. P. Jaudon, DRSS

partlecon 1/6/93

RIV: SRI WFSmith:df 1/22/93	DRP/C EE Collins 1/22/93	C:DRP JEGagliardo 1/16/93	NRR:PDIV-2 EBaker 1/6/93	NRR:D:PDIV-2 SCBlack 1/6/93
D:DRSS LJCallan 1/6/93	D:DRS SJCollins 1/6/93	D:DRP ABBeach 1/16/93	DRA JMMontgomery 1/8/93	RA JLMilhoan 1/8/93

MEETING SUMMARY

Licensee: Gulf States Utilities
Facility: River Bend Station
License No.: NPF-47
Docket No.: 50-458
Subject: Systematic Assessment of Licensee Performance (SALP) Management Meeting

On December 3, 1992, representatives of Gulf States Utilities and the general public met with Region IV personnel in St. Francisville, Louisiana, to discuss the NRC's SALP (NRC Inspection Report 50-458/92-99) results. The meeting was held at the request of the NRC.

The NRC presented a summary of the SALP results by functional area and the licensee was given the opportunity to respond.

After the SALP presentation, the NRC met with the local officials and the media to reaffirm the NRC's role and address questions of mutual interest.

Attachment:
Meeting Attendees

UNITED STATES
NUCLEAR REGULATORY
COMMISSION



SYSTEMATIC ASSESSMENT
OF
LICENSEE PERFORMANCE
(SALP)

GULF STATES UTILITIES
RIVER BEND STATION

SALP CYCLE 12
APRIL 1, 1991
THROUGH
SEPTEMBER 26, 1992

ST. FRANCISVILLE, LA
DECEMBER 3, 1992

AGENDA

INTRODUCTIONS

NRC

GULF STATES

OPENING REMARKS

JAMES L. MILHOAN

SALP PRESENTATION

SAMUEL J. COLLINS

COMMENTS/QUESTIONS

GULF STATES

CLOSING REMARKS

JAMES L. MILHOAN

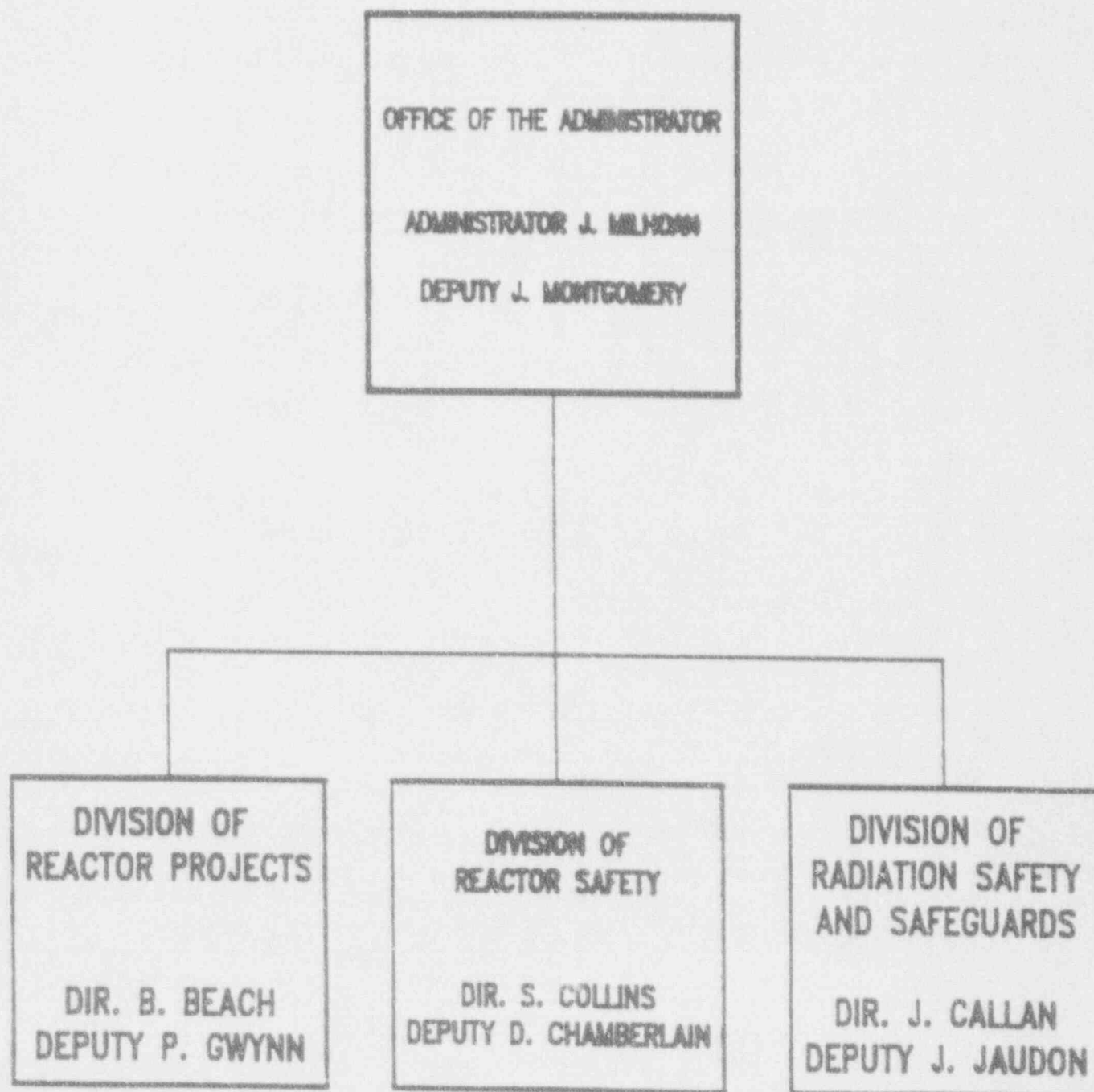
COMMENTS/QUESTIONS

PUBLIC/MEDIA

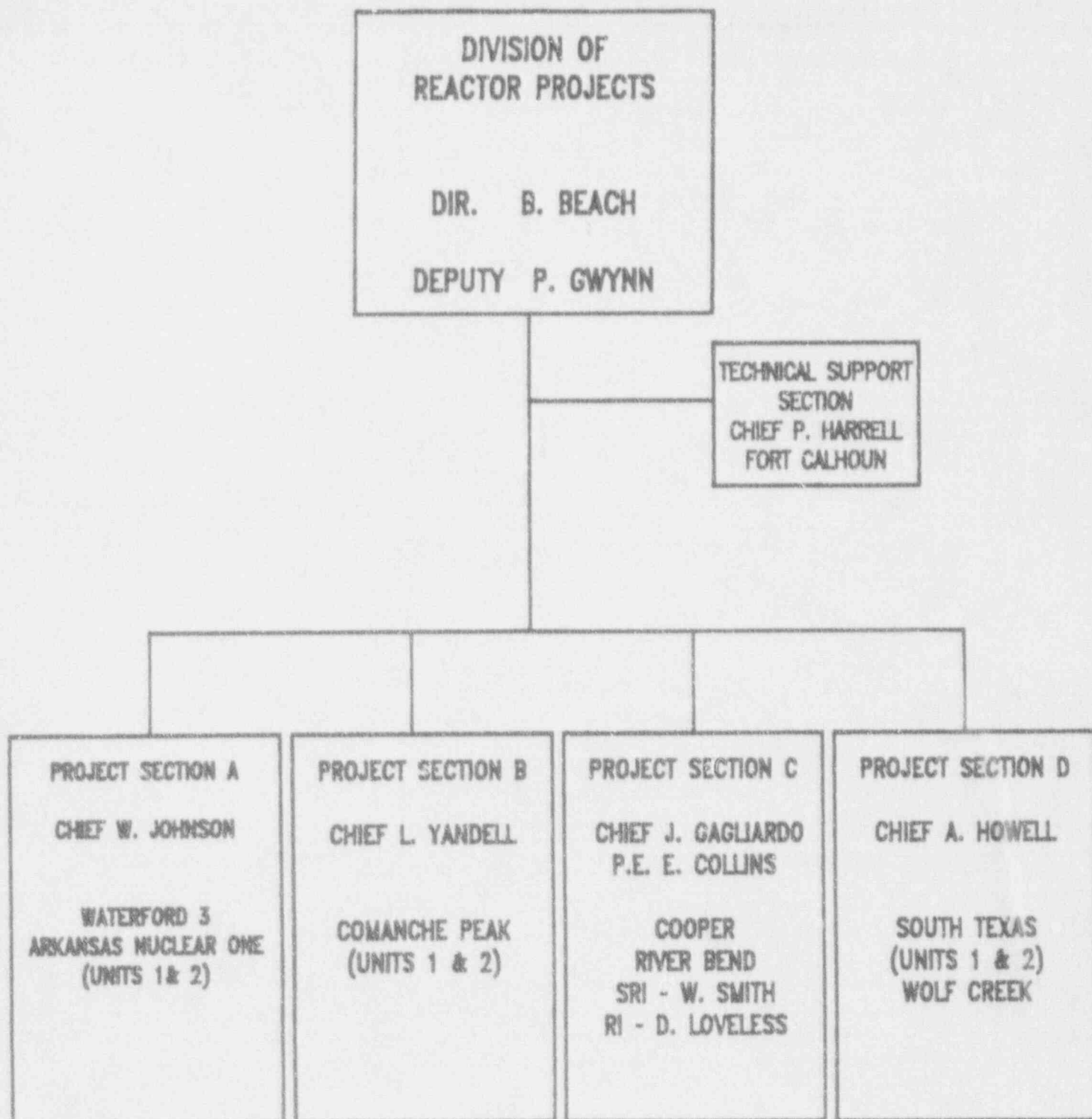
NRC MEETING

LOCAL OFFICIALS

REGION IV ORGANIZATION



DIVISION OF REACTOR PROJECTS ORGANIZATION



REGION IV DIVISION OF REACTOR SAFETY

SAMUEL COLLINS	Director - Denise Garcia, Intern
DWIGHT CHAMBERLAIN	Deputy Director
IAN BARNES	Technical Assistant
PHIL WAGNER	Team Leader
Cheryl Sudman	Division Secretary

Lynn Berger, Secretary

Carol Gordon, Secretary

ENGINEERING SECTION (ES)

TOM WESTERMAN, Chief
Chuck Paulk
Mike Runyan
Bill McNeill
Bob Vickrey
Paula Goldberg
Don Garrison

FUNCTIONS

Modifications/Testing
Design Changes
Plant Systems Components
PRA
Configuration Control
MOV TI-109
EDSFI Followup TI-111
50.59
IPE/IPEEE
Service Water TI-*
Design Basis Reconstitution

MAINTENANCE SECTION (MS)

TOM STETKA, Chief
Dale Powers
Dennis Kelley
Claude Johnson
Lee Ellershaw
Les Gilbert
Bob Stewart

FUNCTIONS

Materials
Maintenance Processes
- Welding
- NDE
ISI
IST
Pipe Support
Containment Testing
Surveillance Processes
S/G Performance
Check Valve TI-110
Performance Indicators
Erosion/Corrosion Programs
Balance of Plant
Chemistry
Core Performance

OPERATIONS SECTION (OS)

JOHN PELLET, Chief
Laura Hurley, OL Assistant
Jack Keeton
Steve McCrory
Ryan Lantz
Tom McKernon
Vacant

FUNCTIONS

Operator Licensing
EOP Inspections
Training Programs
Operational/Reactive Insp. Support
Safe Shutdown
Event Reporting
EP Interface
Shutdown Risk TI-*
Outage Planning

PLANT SUPPORT (PS)

LES CONSTABLE, Chief
Howard Bundy
John Whittemore
Mike Murphy
Jit Singh
Dorwin Hunter
Vacant

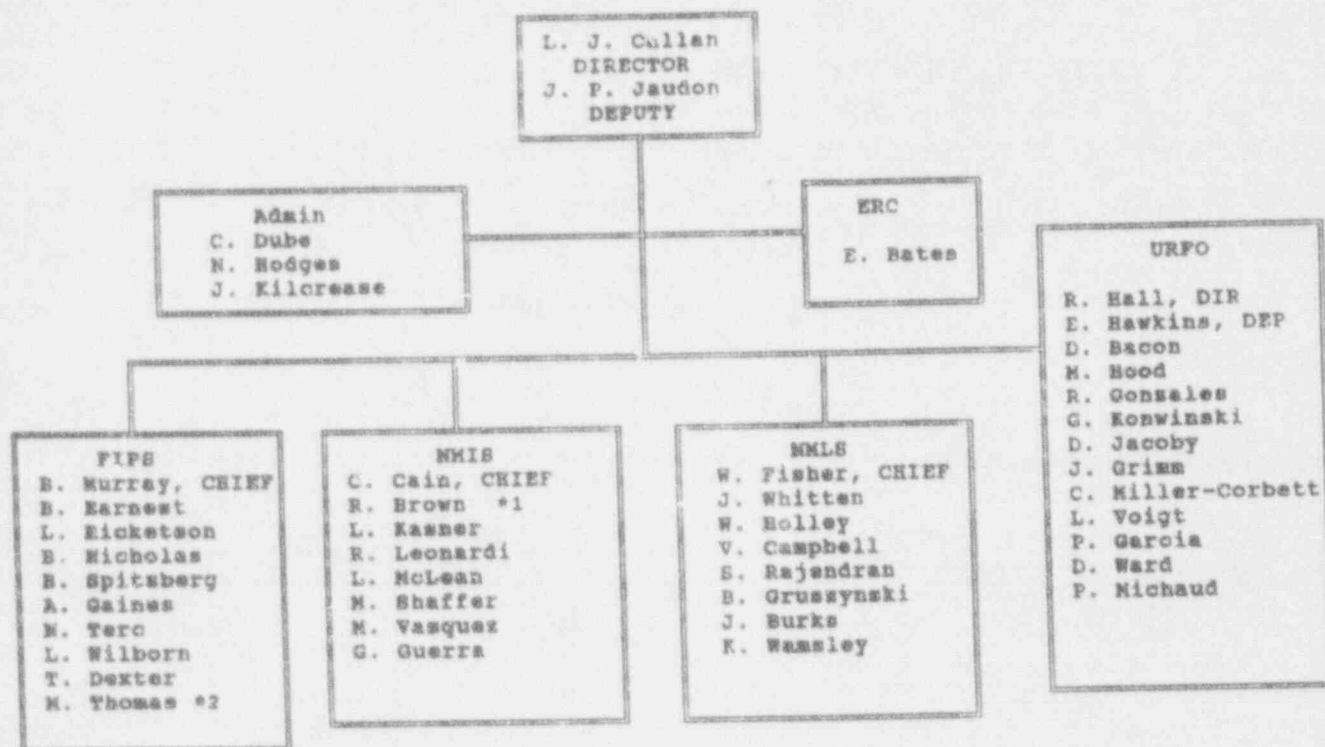
FUNCTIONS

QA
Organizations
Procurement
Receipt Storage
Records
Review Committees
Procurement TI-*
Corrective Action Programs
Fire Protection
Housekeeping Controls

*Indicates not yet issued

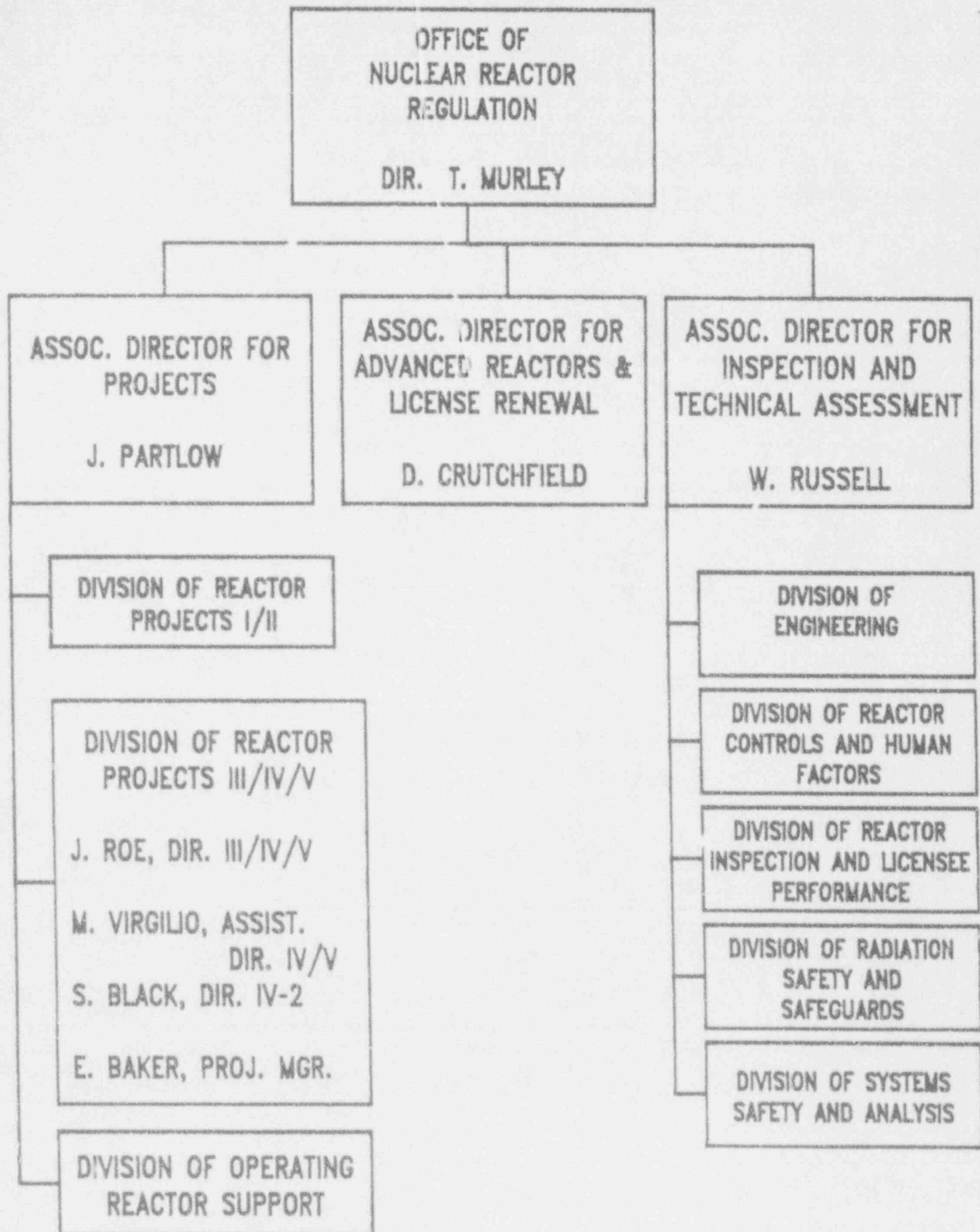
NOV 16 1992

DRSS



Revision Date: November 24, 1992

NRR ORGANIZATION



SALP PROGRAM OBJECTIVES

- 1. IDENTIFY TRENDS IN LICENSEE
PERFORMANCE**
- 2. PROVIDE A BASIS FOR ALLOCATION OF
NRC RESOURCES**
- 3. IMPROVE NRC REGULATORY PROGRAM**

PERFORMANCE ANALYSIS AREAS

PLANT OPERATIONS

RADIOLOGICAL CONTROLS

MAINTENANCE/SURVEILLANCE

EMERGENCY PREPAREDNESS

SECURITY

ENGINEERING/TECHNICAL SUPPORT

SAFETY ASSESSMENT/QUALITY VERIFICATION

EVALUATION CRITERIA	Assurance of Quality	Approach to the Resolution of Technical Issues from a Safety Standpoint	Enforcement History	Operational and Construction Events	Staffing	Effectiveness of Training and Qualifications	Category Rating
Plant Operations							
Radiological Controls							
Maintenance/Surveillance							
Emergency Preparedness							
Security							
Engineering/Technical Support							
Safety Assessment/Quality Verification							

PERFORMANCE RATING

CATEGORY 1

LICENSEE MANAGEMENT ATTENTION TO AND INVOLVEMENT IN NUCLEAR SAFETY OR SAFEGUARDS ACTIVITIES RESULTED IN A SUPERIOR LEVEL OF PERFORMANCE. NRC WILL CONSIDER REDUCED LEVELS OF INSPECTION EFFORT.

PERFORMANCE RATING

CATEGORY 2

LICENSEE MANAGEMENT ATTENTION TO AND INVOLVEMENT IN NUCLEAR SAFETY OR SAFEGUARDS ACTIVITIES RESULTED IN A GOOD LEVEL OF PERFORMANCE. NRC WILL CONSIDER MAINTAINING NORMAL LEVELS OF INSPECTION EFFORT.

PERFORMANCE RATING

CATEGORY 3

LICENSEE MANAGEMENT ATTENTION TO AND INVOLVEMENT IN NUCLEAR SAFETY OR SAFEGUARDS ACTIVITIES RESULTED IN AN ACCEPTABLE LEVEL OF PERFORMANCE. HOWEVER, BECAUSE OF THE NRC'S CONCERN THAT A DECREASE IN PERFORMANCE MAY APPROACH OR REACH AN UNACCEPTABLE LEVEL, NRC WILL CONSIDER INCREASED LEVELS OF INSPECTION EFFORT.

PERFORMANCE TREND

AN APPRAISAL OF A PERFORMANCE TREND IN A FUNCTIONAL AREA IS USED AS A PREDICTIVE INDICATOR. A PERFORMANCE TREND SHOULD ONLY BE USED IF BOTH A DEFINITE TREND IS DISCERNIBLE, EITHER IMPROVING OR DECLINING, AND CONTINUATION OF THE TREND MAY RESULT IN A CHANGE IN PERFORMANCE RATING.

RIVER BEND OVERALL PERFORMANCE SUMMARY

<u>FUNCTIONAL AREA</u>	<u>RATING LAST</u>	<u>RATING THIS</u>
	<u>PERIOD</u> 01/01/90 - 03/31/91	<u>PERIOD</u> 04/01/91 - 09/26/92
PLANT OPERATIONS	1 (DECLINING)	2
RADIOLOGICAL CONTROLS	2	2
MAINTENANCE/ SURVEILLANCE	2	2
EMERGENCY PREPAREDNESS	1 (DECLINING)	1
SECURITY	2	2
ENGINEERING/ TECHNICAL SUPPORT	2	2
SAFETY ASSESSMENT/ QUALITY VERIFICATION	2	2

IV.A. PLANT OPERATIONS

- + WEAKNESSES IDENTIFIED IN THE PREVIOUS SALP REPORT WERE APPROPRIATELY ADDRESSED
- + EXCELLENT ENFORCEMENT HISTORY
- + VERY GOOD OPERATING STAFF PERFORMANCE, BOTH ROUTINE AND EVENT RESPONSE
- + COMMENDABLE INTERFACE WITH SUPPORT DEPARTMENTS
- + MANAGEMENT OVERSIGHT EXCELLENT
- INCONSISTENT HOUSEKEEPING EFFECTIVENESS - DECLINED DURING LATTER HALF OF ASSESSMENT PERIOD
- + IMPROVED LICENSED OPERATOR INITIAL EXAMINATION RESULTS
- DECLINED LICENSED OPERATOR REQUALIFICATION EXAMINATION RESULTS
- SOME REPEAT EXAMPLES OF INCONSISTENCY IN PROCEDURE PERFORMANCE

CATEGORY 2

IV.B. RADIOLOGICAL CONTROLS

- MIXED ENFORCEMENT HISTORY, INCLUDING A CONTINUATION OF SIGNIFICANT PROGRAM COMPLIANCE ISSUES BY OTHER DEPARTMENTS, MOSTLY SELF-IDENTIFIED BY GSU RADIOLOGICAL PROTECTION STAFF
- o MANAGEMENT ACTIVELY INVOLVED IN AGGRESSIVE CORRECTIVE ACTIONS- CONTINUED ATTENTION IS NECESSARY
- + RADIOLOGICAL PROTECTION STAFF PERFORMANCE ROUTINELY GOOD WITH SUPERIOR RESPONSE TO MARCH 1992 HIGH WIND EVENT
- + GOOD PROCEDURES - NEW INITIATIVE FOR UNIQUE RADIOLOGICAL PROTECTION PROBLEM MANAGEMENT PROCESS
- + STRONG MANAGEMENT SUPPORT FOR ALARA, NOTEWORTHY RADIATION SOURCE REDUCTION EFFORTS
- EXAMPLES OF POOR ADHERENCE TO RADIOLOGICAL PROGRAM REQUIREMENTS BY WORKERS
- + EXCELLENT RADIOACTIVE WASTE EFFLUENT, CHEMISTRY, ENVIRONMENTAL MONITORING, SOLID RADWASTE AND RADIOACTIVE TRANSPORTATION PROGRAMS
- CONTROL AND STORAGE OF TRANSIENT RADIOACTIVE WASTE ONSITE DECLINED DURING AND FOLLOWING THE EXTENDED OUTAGE
- + COMPREHENSIVE QUALITY ASSURANCE AUDITS WERE PERFORMED
- o STAFFING GENERALLY APPROPRIATE BUT MINIMAL AT END OF OUTAGE IMPACTING EFFECTIVENESS OF SOME PROGRAMS
- + EXCELLENT TRAINING PROGRAMS BUT RESULTS NOT REFLECTED IN WORKER JOB PERFORMANCE

CATEGORY 2

IV.C. MAINTENANCE/SURVEILLANCE

- + WEAKNESSES IDENTIFIED IN THE PREVIOUS SALP REPORT WERE APPROPRIATELY ADDRESSED
- + OVERALL EFFECTIVE MAINTENANCE PROGRAM WITH STRONG MANAGEMENT OVERSIGHT
- + IMPROVEMENTS IN MAINTENANCE PROGRAM IMPLEMENTATION WERE NOTED
- INSTRUCTIONS PROVIDED TO WORKERS NOT ALWAYS ADEQUATE INCLUDING EXAMPLES OF OVER RELIANCE ON SKILL OF CRAFT
- + INSERVICE INSPECTION AND FLOW-ASSISTED CORROSION PROGRAM WERE STRENGTHS
- + SURVEILLANCE SCHEDULING AND PROCEDURE UPGRADE PROGRAMS STRENGTHS
- SOME PROBLEMS NOTED IN SURVEILLANCE PROGRAM IMPLEMENTATION
- + QUALITY OF SURVEILLANCE TEST RECORDS COMMENDABLE
- PLANT PHYSICAL CONDITION NOT SIGNIFICANTLY IMPROVED AND REQUIRES ADDITIONAL ATTENTION IN SOME AREAS

CATEGORY 2

IV.D. EMERGENCY PREPAREDNESS

- + WEAKNESSES IDENTIFIED IN THE PREVIOUS SALP REPORT WERE APPROPRIATELY ADDRESSED
- + EFFECTIVE AND TIMELY EMERGENCY PLAN IMPLEMENTATION DURING ACTUAL EVENTS WITH ONE EVENT CLASSIFICATION ISSUE
- + IMPROVED PERFORMANCE DURING EMERGENCY PLAN EXERCISE INCLUDING A CHALLENGING EXERCISE SCENARIO AND EFFECTIVE SELF-CRITIQUE
- SOME PROBLEMS WITH THOROUGHNESS OF EMERGENCY PLAN CHANGE REVIEW AND APPROVAL PROCESS
- + EXCELLENT EMERGENCY FACILITY, EQUIPMENT AND SUPPLIES
- + VERY GOOD OPERATOR PERFORMANCE DURING EMERGENCY PLAN WALKTHROUGH INSPECTION
- + COMPREHENSIVE INTERNAL AUDITS PERFORMED
- + EXCELLENT TRAINING PROGRAMS

CATEGORY 1

IV.E. SECURITY

- A CONTINUATION OF THE WEAKNESSES IN PERFORMING CRITICAL SELF-ASSESSMENTS WAS NOTED
- WEAKNESSES IN OVERSIGHT OF PROGRAM IMPLEMENTATION NOTED, MOSTLY IDENTIFIED BY AUDITS AND EXTERNAL REVIEWS
- + SECURITY TESTING AND MAINTENANCE PROGRAM SIGNIFICANTLY IMPROVED
- o SECURITY PLAN REVISIONS GENERALLY APPROPRIATE, ONE EXAMPLE OF PROBLEM WITH THOROUGHNESS OF CHANGE REVIEW AND APPROVAL PROCESS
- + EXCELLENT QUALITY ASSURANCE AUDITS AND EXTERNAL REVIEWS
- o ADEQUATE STAFFING LEVEL, ISOLATED OVERTIME CONTROL PROBLEMS
- o ADEQUATE TRAINING PROGRAM IMPLEMENTATION DURING OUTAGE PERIOD
- + EXCELLENT TRAINING FACILITIES

CATEGORY 2

IV.F. ENGINEERING/TECHNICAL SUPPORT

- + IMPROVEMENTS NOTED IN BACKLOG REDUCTION
- + MOTOR-OPERATED VALVE PROGRAM GOOD WITH SOME WEAKNESSES NOTED IN IMPLEMENTING COMMITMENTS
- + MODIFICATION PROCESS IMPROVEMENTS NOTED
- + STRONG QUALITY ASSURANCE OVERSIGHT
- + STRONG ENGINEERING ANALYSIS GROUP, EXCELLENT USE OF PRA
- + ENGINEERING DISPOSITIONS TO ~~CONDITION~~ REPORTS WERE GOOD, LIMITED ROOT CAUSE ANALYSIS NOTED BECAUSE OF HIGH THRESHOLD CRITERIA
- + SYSTEM ENGINEER INITIATIVES GOOD WITH STRONG TRAINING PROGRAM NOTED
- + IMPROVED TECHNICAL STAFF AND MANAGMENT TRAINING PROGRAM
- APPROPRIATE IDENTIFICATION AND REPORTING OF FIRE PROTECTION ISSUES BUT UNTIMELY RESOLUTION OF ISSUES NOTED
- SOME TRAINING AND QUALIFICATION WEAKNESSES NOTED
- + NOTEWORTHY SUPPORT FOR MAJOR MODIFICATIONS AND OUTAGE WORK
- o CHECK VALVE PROGRAM SATISFACTORY WITH SOME COORDINATION WEAKNESSES NOTED
- + GOOD TECHNICAL ISSUE SAFETY RESOLUTION, PROACTIVE USE OF PRA

CATEGORY 2

IV.G. SAFETY ASSESSMENT/QUALITY VERIFICATION

- + WEAKNESSES IDENTIFIED IN THE PREVIOUS SALP REPORT WERE APPROPRIATELY ADDRESSED
- + MANAGEMENT INVOLVEMENT IN SITE ACTIVITIES GENERALLY STRONG AND PROACTIVE WITH WEAKNESSES IN SECURITY AREA NOTED
- + OVERSIGHT ASSESSMENTS AND QUALITY ASSURANCE INVOLVEMENT WERE STRENGTHS
- + RIVER BEND ACTION PLAN WAS NOTED TO BE A POSITIVE INITIATIVE
- o GENERALLY GOOD, EFFECTIVE CORRECTIVE ACTION PROGRAM
- EXAMPLES NOTED OF WEAKNESSES IN RECEIPT INSPECTION AND PROCUREMENT DOCUMENTATION
- + IMPROVED DETAIL AND SCOPE OF SAFETY EVALUATIONS
- WEAKNESSES NOTED IN EVALUATING PLANT CONDITIONS FOR REPORTABILITY
- o LICENSE AMENDMENT APPLICATION WEAKNESSES NOTED EARLY IN ASSESSMENT PERIOD, IMPROVEMENTS NOTED
- + IMPROVED LICENSE AMENDMENT SUBMITTAL TIMELINESS NOTED
- + WELL DEFINED PROGRAM FOR HANDLING AND FEEDBACK OF OPERATING EXPERIENCE INFORMATION
- DECLINE IN EFFECTIVENESS OF COMMUNICATION WITH NRC NOTED

CATEGORY 2

EVALUATION CRITERIA	Assurance of Quality	Approach to the Resolution of Technical Issues from a Safety Standpoint	Enforcement History	Operational and Construction Events	Staffing	Effectiveness of Training and Qualifications	Category Rating
Plant Operations	+	+	+	+	-		1*
Radiological Controls				-			2
Maintenance/Surveillance			+				2
Emergency Preparedness				+	+		1*
Security			+	+			2
Engineering/Technical Support							2
Safety Assessment/Quality Verifications							2

PREVIOUS SALP CYCLE

* DECLINING TREND

EVALUATION CRITERIA	Assurance of Quality	Approach to the Resolution of Technical Issues from a Safety Standpoint	Enforcement History	Operational and Construction Events	Staffing	Effectiveness of Training and Qualifications	Category Rating
Plant Operations			+	+	+		2
Radiological Controls							2
Maintenance/Surveillance							2
Emergency Preparedness	+	+	+	+	+	+	1
Security		-	-				2
Engineering/Technical Support		+		+		+	2
Safety Assessment/Quality Verifications							2

THIS SALP CYCLE

NEXT SALP PERIOD

SCHEDULED

SEPTEMBER 27, 1992

THROUGH

JANUARY 1, 1994

15 MONTHS