

MS 16  
K4

(201) 365 - 5250

May 2, 1991

Mr. Steven Courtemanche  
Nuclear Materials Safety Section A  
Division of Radiation Safety and Safeguards  
US Nuclear Regulatory Commission, Region 1  
475 Allendale Road  
King of Prussia, Pennsylvania, 19406

Reference:

License # 29-03047  
Docket# 030-02465  
Control # 1117698  
NRC letter dated Aug. 20, 1990  
Our response dated Nov. 13, 1990  
Telephone conversation on May 5, 1991

Dear Mr. Courtemanche:

As per our telephone conversation earlier this morning I am submitting the following response to the five items that you requested additional information.

1. Mobile radioactive sources transporters

The department is provided with three mobile transporters.

a) Radium Chemical Co. cart with a Heyman carrier and a rectangular box carrier:

These equipments do not have a model or serial number on them. I have enclosed the polaroid pictures for your reference. The Heyman type carrier is used in conjunction with the Fletcher-Suit and Heyman core to carry the Cesium sources. The rectangular box container (10 cm X 10 cm X 20 cm) which is lined with 2.5 cm of lead shielding and an inner core for the sources (5cm X 5 cm X 15 cm).

b) Nuclear Associates cart with Heyman carrier with Fletcher-Suit core and Heyman core:

A copy of the catalog description has been enclosed for your reference.

c) Radionuclide carrier, Reactor Experiments, Inc. San Carlos, CA.

Model # 301 C with depth 30.5 cm, Outer diameter 20 cm, 5 cm inner diameter opening and 3.8 cm of lead wall thickness. A polaroid picture has been enclosed for your reference.

9301070237 920520  
PDR FOIA  
STOLL92-58 PDR

OFFICIAL RECORD COPY ML 10

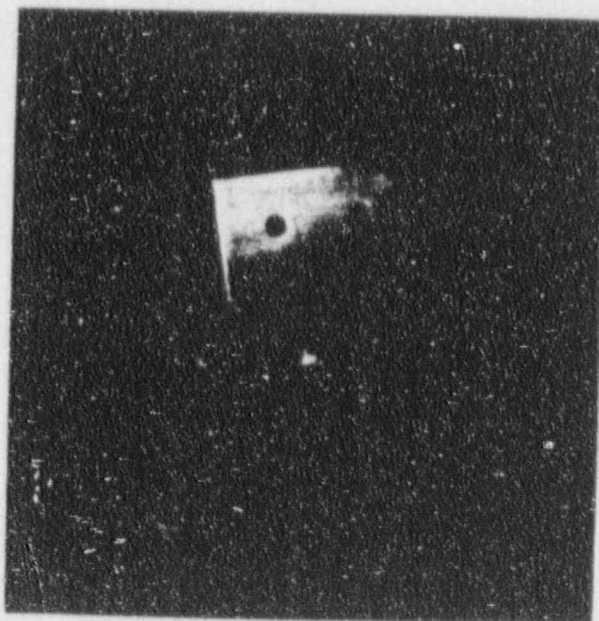
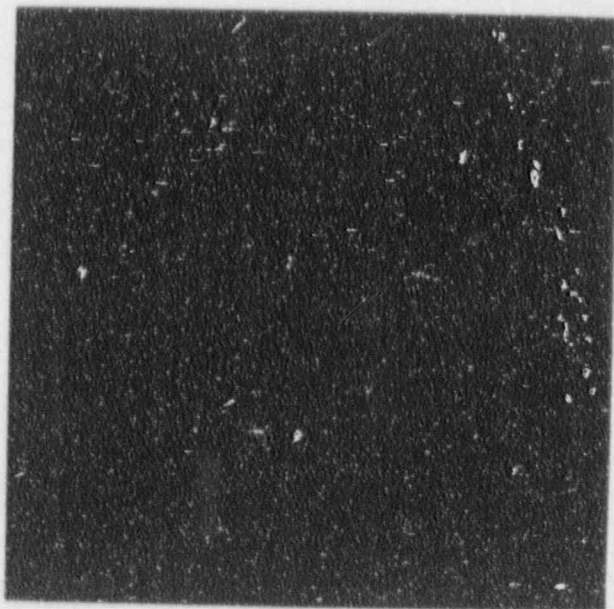
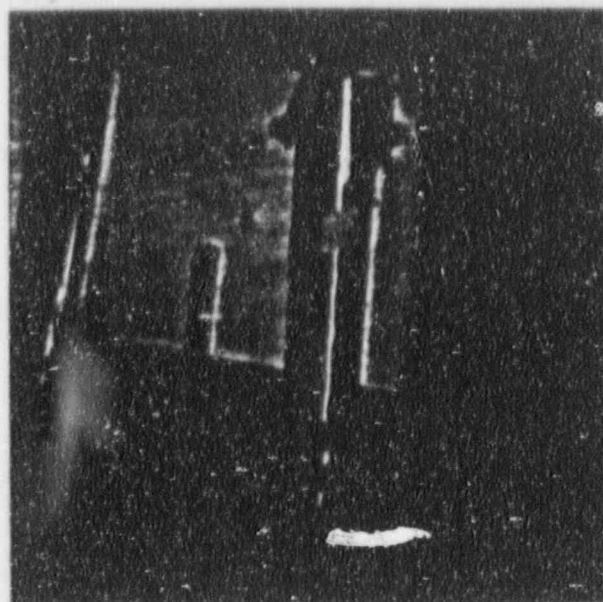
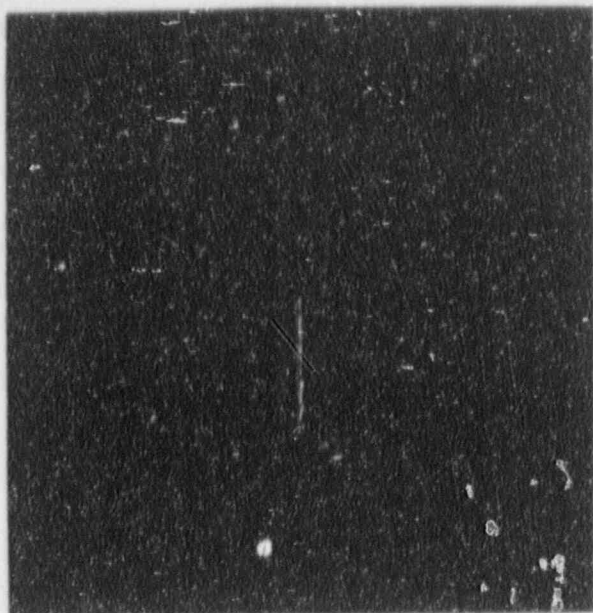
111798  
SERV. D. 2 1001

EUROLOGY NEUROLOGY

Sreenivasa Murthy, M.S.  
Medical Physicist/R.S.O.

*BETH ISRAEL HOSPITAL*  
*Department of Radiation Oncology*

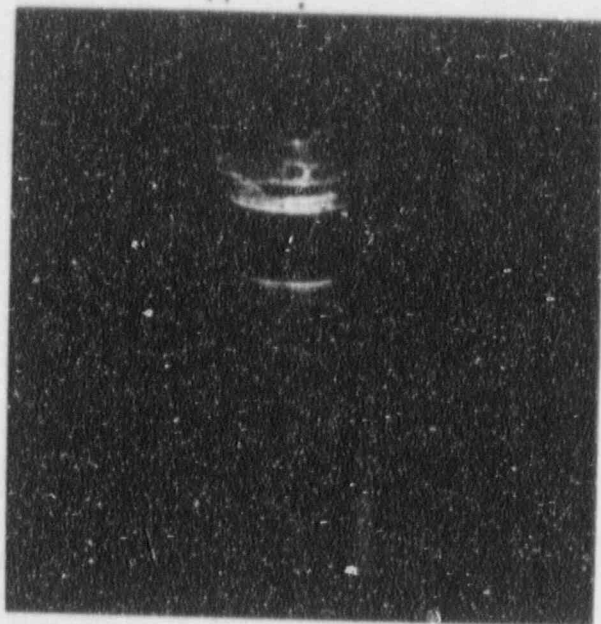
Radium Chemical Co. Cart and carriers



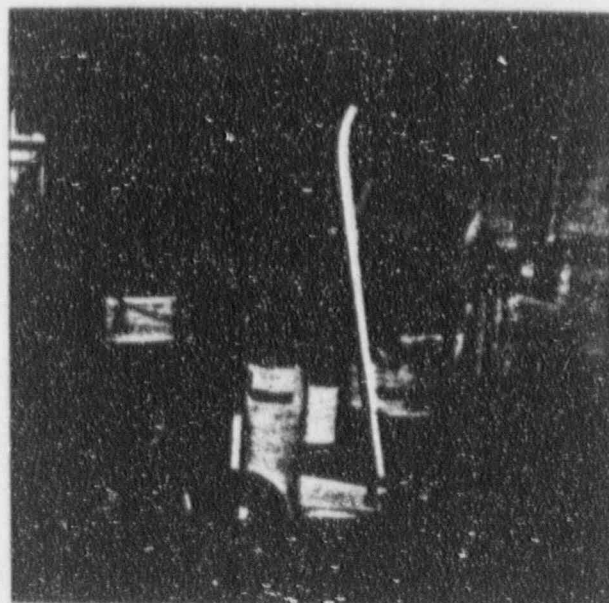


*BETH ISRAEL HOSPITAL*  
*Department of Radiation Oncology*

Reactor Experiments Inc. Carrier



Radionuclide Carrier  
Reactor Experiments, Inc.  
San Carlos, California



## Carriers, Cores and Carts

*For rapid transport of radioactive sources to bedside or operating room*

- Ideal for temporary storage of approx.  
100 mg Ra-eq  $^{137}\text{Cs}$  or 100 mg Ra.



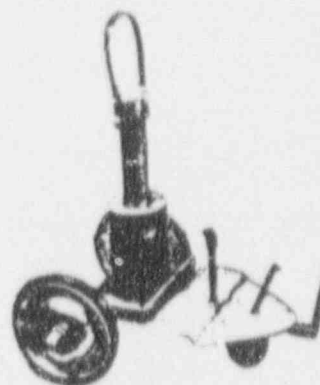
Heyman  
Carrier



Fletcher-Suit  
Core



Heyman  
Core



Cart for  
Heyman  
Carrier

These units are designed for safety and convenience when transporting radioactive material between a permanent storage safe and the patient's bedside. The carrier and lift-out cores are made of corrosion-free stainless steel, and the carrier is shielded with 1" of lead. It fits on a rugged, enamelled-steel cart equipped with two wheels, a caster and a long handle.

Two types of lift-out cores are available for the Heyman Carrier: Fletcher-Suit and Heyman. The Fletcher-Suit Core holds one loaded uterine source carrier and two loaded colpostat source carriers. The Heyman Core holds up to 12 MICRAD<sup>™</sup> or Heyman sources.

### Specifications

All-welded stainless steel carrier, shielded with 1" of lead. Lift-out stainless steel core. Maximum radiation level (at 1 meter from center of shield): 5 mR/hr when 100 mg Ra-eq  $^{137}\text{Cs}$  is stored; 20 mR/hr for 100 mg radium. Enamelled-steel cart has two 8" wheels, one 3" caster, and a 40" handle.

67-724 Heyman Carrier

67-715 Fletcher-Suit Core

67-725 Heyman Core

67-706 Cart for Heyman Carrier



# BETH ISRAEL HOSPITAL

70 PARKER AVENUE / PASSAIC, NEW JERSEY 07055 / (201) 365-5000

Renewal Request of NRC license 29-03047-01

Item 7

## 7.3 Radiation Safety Officer

Licensee request the renewal of Dennis Owens, M.S. as Radiation Safety Officer as per NRC License 29-03047-01.

# CONVERSATION RECORD

TIME

3:30 PM

DATE

TYPE

☐ VISIT

☐ CONFERENCE

☐ TELEPHONE

☐ INCOMING

☒ OUTGOING

Location of Visit/Conference:

NAME OF PERSON(S) CONTACTED OR IN CONTACT WITH YOU

ORGANIZATION (Office, dept., bureau, etc.)

TELEPHONE NO.

Bethel Island Hosp 365 5200

SUBJECT

- Lynne Rhagigam  
- Rad Administrator

SUMMARY

① Asked about renewal deficiency answers.

Lynne (above) stated that letter had not been received and some new additions were being worked on.

② Also 35-500 would need 1000 milliwatts

ACTION REQUIRED

Copy of def. letter mailed 10/30/90. Wait response.

NAME OF PERSON DOCUMENTING CONVERSATION

SIGNATURE

DATE

C. Schuhmighaus

10/30/90

ACTION TAKEN

OFFICIAL RECORD COPY

ML 10

SIGNATURE

TITLE

DATE