



# KIRKSVILLE OSTEOPATHIC HEALTH CENTER

Kirkville, Missouri 63501

Phone: 816 626-2256

## DEPARTMENT OF RADIOLOGY

### RADIOLOGISTS

Michael K. Willman, D.O.

Paul M. Williams, D.O.

May 14, 1985

United States Nuclear Regulatory Commission  
Region III  
799 Roosevelt Road  
Glen Ellyn, IL 60137

J. R. Madsen,

Enclosed is the information that you have requested  
concerning NRC License No. 24-05245-01. If there is  
any questions, please let us know.

Sincerely,

Paul M. Williams, D.O.

jec  
enclosure

8506100680 850524  
REG3 LIC30  
24-05245-01 PDR

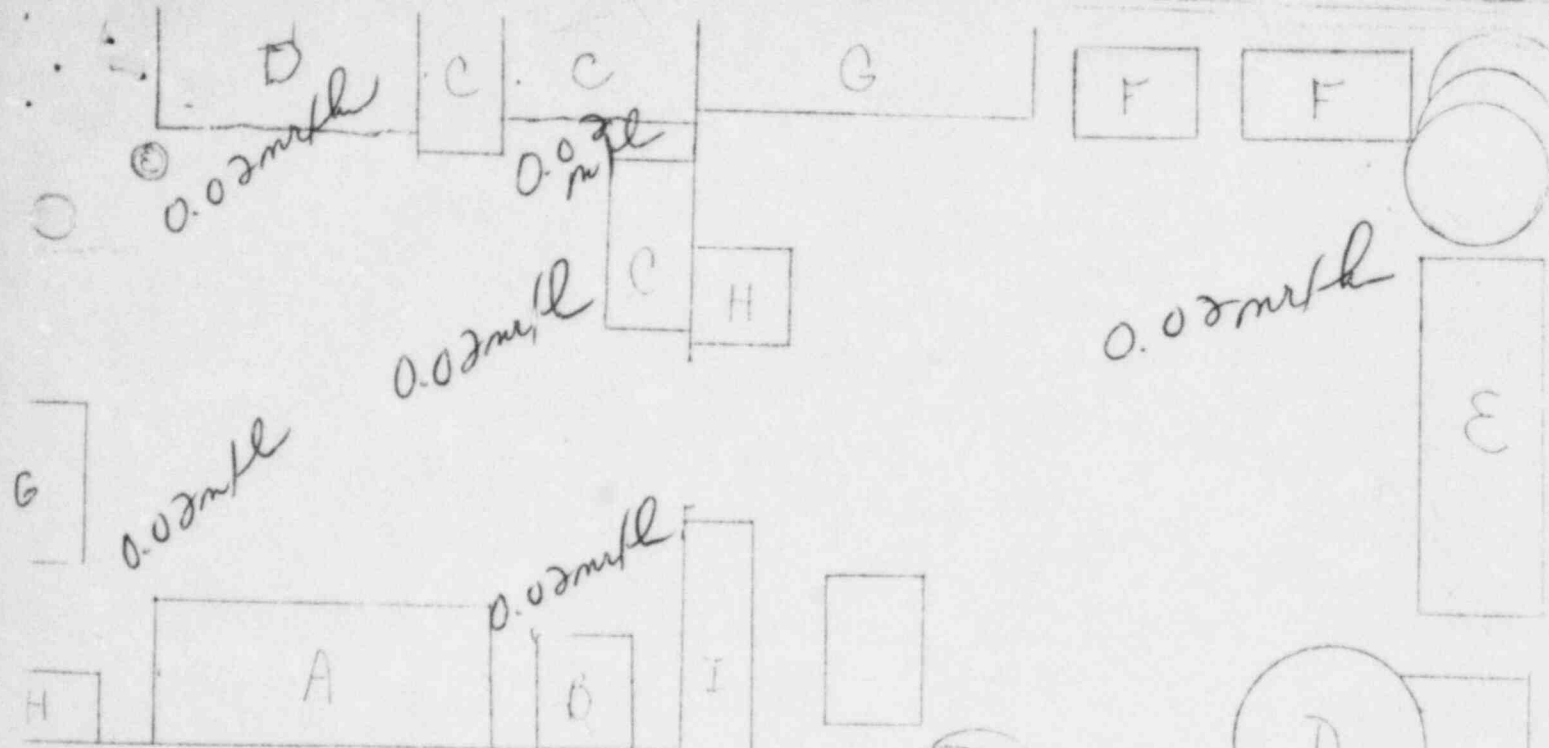
|                  |             |
|------------------|-------------|
| RECEIVED BY LFMB |             |
| Date             | 5/22/85     |
| Log              | may 23 1985 |
| By               | R/M         |
| Orig. To         |             |
| Action Compl     | CAF         |

RECEIVED  
MAY 16 1985  
REGION III

170.11(a)(4)  
FEE EXEMPT  
add info

CONTROL NO. 78968

MAY 16 1985



ROOM I

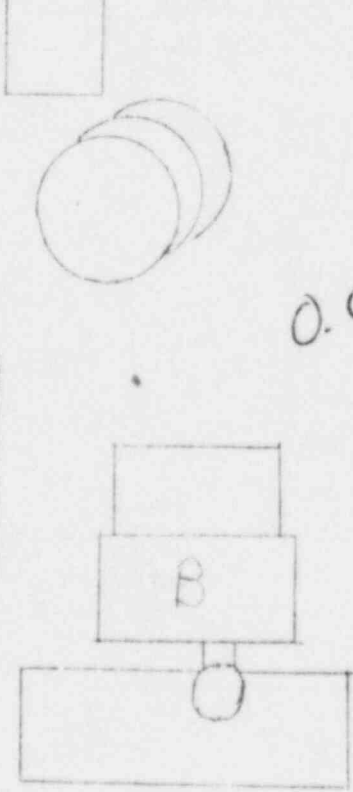
- A. Desk
- B. Rectilinear
- C. Full Body Table
- D. Camera
- E. Camera Table
- F. Console & Matrix
- G. Cabinet
- H. Xenon Unit
- I. Bookcase, Refrigerator & Files

ROOM II

- A. Hood
- B. Refrigerator
- C. Cabinets & File
- D. Work Table
- E. Waste Basket
- F. Generator Storage
- G. Hot Plate
- H. Decay Storage Bin

$Gg = 0.02 \text{ mR/h}$

01-11-85  
Closeout  
using survey meter  
#229 calib. 10-5-84  
YMK



$0.02 \text{ mR/h}$

Paul M. Williams  
1/11/85 PSU

ALL COUNTS DONE IN mR/hr

CONTROL NO. 78968

# CONTAMINATION SURVEY

Room I

Location (See diagram key)

Room II

Survey meter results in mr/hr

Wipe test in CPM

| Date     | A     | B  | C  | D  | E  | F  | G  | H  | I  | J  | K  | L  | M  | N  | O  | P  | Q  | R  | S  | T  | U  | V  | W  | X  | Y  | Z  | Initi |
|----------|-------|----|----|----|----|----|----|----|----|----|----|----|----|----|----|----|----|----|----|----|----|----|----|----|----|----|-------|
| 4-1-84   | 60    | 60 | 60 | 70 | 60 | 60 | 60 | 60 | 70 | 80 | 60 | 70 | 60 | 60 | 60 | 60 | 60 | 60 | 60 | 60 | 60 | 60 | 60 | 60 | 60 | 60 | 70    |
| 5-11-84  | 60    | 60 | 60 | 60 | 70 | 70 | 70 | 50 | 50 | 50 | 50 | 60 | 60 | 60 | 60 | 60 | 60 | 60 | 60 | 60 | 60 | 60 | 60 | 60 | 60 | 60 | 70    |
| 5-17-84  | 60    | 60 | 60 | 70 | 70 | 60 | 60 | 60 | 60 | 70 | 70 | 60 | 70 | 70 | 70 | 70 | 70 | 70 | 70 | 70 | 70 | 70 | 70 | 70 | 70 | 70 | 70    |
| 5-25-84  | 80    | 80 | 80 | 90 | 90 | 80 | 80 | 90 | 90 | 90 | 90 | 80 | 80 | 80 | 80 | 80 | 80 | 80 | 80 | 80 | 80 | 80 | 80 | 80 | 80 | 80 | 90    |
| 5-31-84  | 60    | 60 | 60 | 60 | 70 | 60 | 60 | 60 | 60 | 70 | 70 | 70 | 70 | 70 | 70 | 70 | 70 | 70 | 70 | 70 | 70 | 70 | 70 | 70 | 70 | 70 | 70    |
| 6-7-84   | 60    | 60 | 60 | 60 | 40 | 70 | 60 | 60 | 60 | 70 | 70 | 70 | 70 | 70 | 70 | 70 | 70 | 70 | 70 | 70 | 70 | 70 | 70 | 70 | 70 | 70 | 70    |
| 6-15-84  | 50    | 50 | 50 | 40 | 40 | 40 | 40 | 40 | 40 | 50 | 50 | 40 | 40 | 40 | 50 | 50 | 50 | 50 | 50 | 50 | 50 | 50 | 50 | 50 | 50 | 50 | 40    |
| 6-21-84  | 60    | 60 | 60 | 60 | 70 | 60 | 60 | 60 | 60 | 70 | 70 | 50 | 70 | 50 | 70 | 80 | 70 | 70 | 70 | 70 | 70 | 70 | 70 | 70 | 70 | 70 | 70    |
| 6-28-84  | 50    | 50 | 50 | 50 | 60 | 50 | 60 | 50 | 50 | 50 | 60 | 50 | 60 | 50 | 60 | 50 | 50 | 50 | 50 | 50 | 50 | 50 | 50 | 50 | 50 | 50 | 50    |
| 07-06-84 | 40    | 40 | 40 | 40 | 50 | 40 | 40 | 50 | 50 | 50 | 40 | 40 | 40 | 40 | 40 | 40 | 40 | 40 | 40 | 40 | 40 | 40 | 40 | 40 | 40 | 40 | 70    |
| 07-13-84 | 60    | 60 | 60 | 60 | 60 | 70 | 70 | 70 | 60 | 60 | 60 | 50 | 60 | 60 | 60 | 70 | 70 | 70 | 70 | 70 | 70 | 70 | 70 | 70 | 70 | 70 | 70    |
| 07-20-84 | 70    | 70 | 70 | 70 | 80 | 80 | 70 | 70 | 90 | 40 | 70 | 70 | 70 | 70 | 70 | 70 | 70 | 70 | 70 | 70 | 70 | 70 | 70 | 70 | 70 | 70 | 70    |
| 7-26-84  | 50    | 50 | 50 | 60 | 60 | 50 | 50 | 50 | 50 | 70 | 70 | 80 | 70 | 80 | 70 | 70 | 70 | 70 | 70 | 70 | 70 | 70 | 70 | 70 | 70 | 70 | 70    |
| 8-2-84   | 40    | 40 | 40 | 40 | 50 | 50 | 40 | 40 | 30 | 40 | 30 | 30 | 30 | 30 | 40 | 40 | 40 | 40 | 40 | 40 | 40 | 40 | 40 | 40 | 40 | 40 | 40    |
| 8-9-84   | 60    | 60 | 60 | 70 | 70 | 70 | 60 | 60 | 60 | 60 | 70 | 70 | 70 | 70 | 70 | 70 | 70 | 70 | 70 | 70 | 70 | 70 | 70 | 70 | 70 | 70 | 70    |
| 8-16-84  | 60    | 60 | 70 | 70 | 60 | 60 | 60 | 60 | 60 | 70 | 70 | 70 | 70 | 70 | 70 | 70 | 70 | 70 | 70 | 70 | 70 | 70 | 70 | 70 | 70 | 70 | 70    |
| 8-24-84  | 50    | 50 | 40 | 40 | 40 | 30 | 30 | 30 | 30 | 40 | 40 | 30 | 30 | 30 | 30 | 30 | 30 | 30 | 30 | 30 | 30 | 30 | 30 | 30 | 30 | 30 | 70    |
| 8-30-84  | 60    | 60 | 60 | 60 | 60 | 70 | 60 | 60 | 60 | 60 | 70 | 70 | 70 | 70 | 70 | 70 | 70 | 70 | 70 | 70 | 70 | 70 | 70 | 70 | 70 | 70 | 70    |
| 9-6-84   | 50    | 50 | 60 | 60 | 50 | 50 | 50 | 50 | 50 | 60 | 60 | 60 | 70 | 70 | 70 | 60 | 60 | 60 | 60 | 60 | 60 | 60 | 60 | 60 | 60 | 60 | 60    |
| 9-13-84  | 40    | 40 | 40 | 60 | 60 | 50 | 50 | 40 | 40 | 30 | 30 | 40 | 40 | 40 | 40 | 50 | 50 | 50 | 50 | 50 | 50 | 50 | 50 | 50 | 50 | 50 | 70    |
| 9-20-84  | 50    | 50 | 50 | 60 | 70 | 50 | 50 | 50 | 50 | 50 | 70 | 70 | 70 | 70 | 70 | 70 | 70 | 70 | 70 | 70 | 70 | 70 | 70 | 70 | 70 | 70 | 70    |
| 9-27-84  | 60    | 60 | 60 | 70 | 60 | 60 | 60 | 60 | 60 | 60 | 70 | 70 | 70 | 70 | 70 | 70 | 70 | 70 | 70 | 70 | 70 | 70 | 70 | 70 | 70 | 70 | 70    |
| 10-4-84  | 50    | 60 | 60 | 60 | 70 | 70 | 60 | 60 | 60 | 50 | 60 | 60 | 50 | 60 | 70 | 70 | 70 | 70 | 70 | 70 | 70 | 70 | 70 | 70 | 70 | 70 | 70    |
| 10-12-84 | 40    | 70 | 90 | 90 | 90 | 80 | 80 | 70 | 70 | 90 | 90 | 90 | 70 | 70 | 70 | 70 | 70 | 70 | 70 | 70 | 70 | 70 | 70 | 70 | 70 | 70 | 70    |
| 10-19-84 | 50    | 50 | 40 | 40 | 50 | 50 | 50 | 50 | 50 | 50 | 50 | 50 | 50 | 50 | 50 | 50 | 50 | 50 | 50 | 50 | 50 | 50 | 50 | 50 | 50 | 50 | 70    |
| 11-2-84  | 40    | 40 | 40 | 50 | 40 | 50 | 50 | 60 | 50 | 40 | 40 | 40 | 40 | 40 | 40 | 40 | 40 | 40 | 40 | 40 | 40 | 40 | 40 | 40 | 40 | 40 | 70    |
| 11-6-84  | 60    | 60 | 60 | 60 | 70 | 70 | 60 | 60 | 80 | 60 | 60 | 60 | 60 | 70 | 70 | 70 | 70 | 70 | 70 | 70 | 70 | 70 | 70 | 70 | 70 | 70 | 70    |
| 11-16-84 | 40    | 40 | 30 | 30 | 30 | 40 | 40 | 30 | 40 | 40 | 40 | 50 | 40 | 40 | 40 | 40 | 40 | 40 | 40 | 40 | 40 | 40 | 40 | 40 | 40 | 40 | 70    |
| 11-23-84 | 50    | 50 | 50 | 50 | 50 | 60 | 60 | 60 | 40 | 50 | 50 | 50 | 50 | 50 | 50 | 50 | 50 | 50 | 50 | 50 | 50 | 50 | 50 | 50 | 50 | 50 | 70    |
| 11-29-84 | 50    | 50 | 50 | 40 | 60 | 70 | 80 | 50 | 50 | 60 | 70 | 70 | 70 | 60 | 70 | 70 | 70 | 70 | 70 | 70 | 70 | 70 | 70 | 70 | 70 | 70 | 70    |
| 12-7-84  | 60    | 60 | 60 | 70 | 70 | 60 | 60 | 60 | 70 | 70 | 70 | 60 | 60 | 60 | 60 | 60 | 60 | 60 | 60 | 60 | 60 | 60 | 60 | 60 | 60 | 60 | 70    |
| 12-14-84 | 40    | 40 | 40 | 40 | 50 | 50 | 50 | 40 | 30 | 30 | 40 | 40 | 40 | 40 | 40 | 40 | 40 | 40 | 40 | 40 | 40 | 40 | 40 | 40 | 40 | 40 | 70    |
| 12-20-84 | 60    | 60 | 60 | 70 | 60 | 70 | 60 | 60 | 60 | 60 | 70 | 70 | 70 | 70 | 70 | 70 | 70 | 70 | 70 | 70 | 70 | 70 | 70 | 70 | 70 | 70 | 70    |
| 12-28-84 | 40    | 40 | 40 | 40 | 50 | 50 | 40 | 40 | 40 | 40 | 60 | 60 | 40 | 40 | 40 | 40 | 40 | 40 | 40 | 40 | 40 | 40 | 40 | 40 | 40 | 40 | 70    |
| 1-3-85   | 60    | 60 | 60 | 70 | 60 | 60 | 70 | 60 | 60 | 70 | 50 | 80 | 70 | 80 | 80 | 80 | 80 | 80 | 80 | 80 | 80 | 80 | 80 | 80 | 80 | 80 | 70    |
| 1-9-85   | MOVED |    |    |    |    |    |    |    |    |    |    |    |    |    |    |    |    |    |    |    |    |    |    |    |    |    | 70    |

1-11-85

Room surveyed and activity found to be at background levels  
 0.02 mR/hr  
 Using Pickev Magnacamm @ 130/170  
 Calibrated 12-3-84

Paul M. Williams NO

1/11/85

RSD