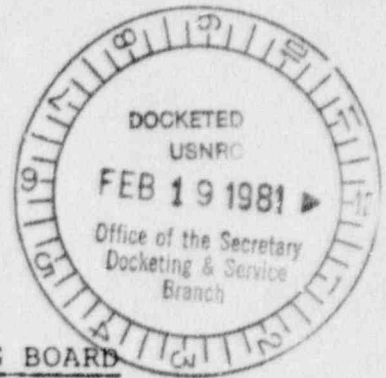


2/13/81

UNITED STATES OF AMERICA  
NUCLEAR REGULATORY COMMISSION



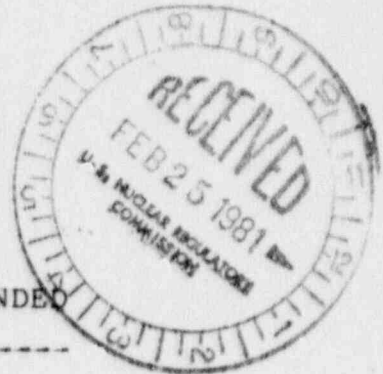
BEFORE THE ATOMIC SAFETY AND LICENSING BOARD

In the Matter of: )

PACIFIC GAS AND ELECTRIC )  
COMPANY (Stanislaus Nuclear )  
Project, Unit No. 1) )  
----- )

NRC Docket No. P-564A

SECOND SUPPLEMENTAL ANSWERS OF  
DEPARTMENT OF WATER RESOURCES TO  
"FIRST SET OF INTERROGATORIES PROPOUNDED  
TO STATE OF CALIFORNIA"  
-----



GEORGE DEUKMEJIAN, Attorney General  
of the State of California  
SANFORD N. GRUSKIN,  
ROBERT H. CONNETT,  
Assistant Attorneys General  
of the State of California  
H. CHESTER HORN, JR.,  
MICHAEL J. STRUMWASSER,  
Deputy Attorneys General  
of the State of California

Attorneys for Intervenor  
Department of Water Resources

8102260 281

UNITED STATES OF AMERICA  
NUCLEAR REGULATORY COMMISSION

BEFORE THE ATOMIC SAFETY AND LICENSING BOARD

In the Matter of )  
 )  
PACIFIC GAS AND ELECTRIC ) NRC Docket No. P-564A  
COMPANY (Stanislaus Nuclear )  
Project, Unit No. 1) )  
----- )

SECOND SUPPLEMENTAL ANSWERS OF  
DEPARTMENT OF WATER RESOURCES TO  
"FIRST SET OF INTERROGATORIES PROPOUNDED  
TO STATE OF CALIFORNIA"  
-----

Intervenor State of California Department of Water  
Resources hereby supplements its answers, filed November 21,  
1977, and amended March 31, 1978, to the "First Set of  
Interrogatories Propounded to State of California."

INTERROGATORY NO. 1:

State separately the name of each of DWR's divisions,  
departments, unit offices, or other subdivisions engaged in any  
activity related to electric power.

SUPPLEMENTAL ANSWER:

Exhibit "I" to these Supplemental Answers shows the  
most recent reorganization of the department.

INTERROGATORY NO. 2:

Set forth an organization chart and a narrative  
statement describing the activities of each division, department,

unit, office or other subdivision identified in your answer to Interrogatory No. 1.

SUPPLEMENTAL ANSWER:

Exhibit "I" to these Supplemental Answers contains the most recent set of organization charts for the department.

INTERROGATORY NO. 3:

With regard to each division, department, unit, office or other subdivision identified in answer to Interrogatory No. 1, identify each and all persons in charge and the assistants of each.

SUPPLEMENTAL ANSWER:

Exhibit "I" to these Supplemental Answers identifies the personnel called for, as the identified personnel occupied the indicated positions on the date shown on each chart.

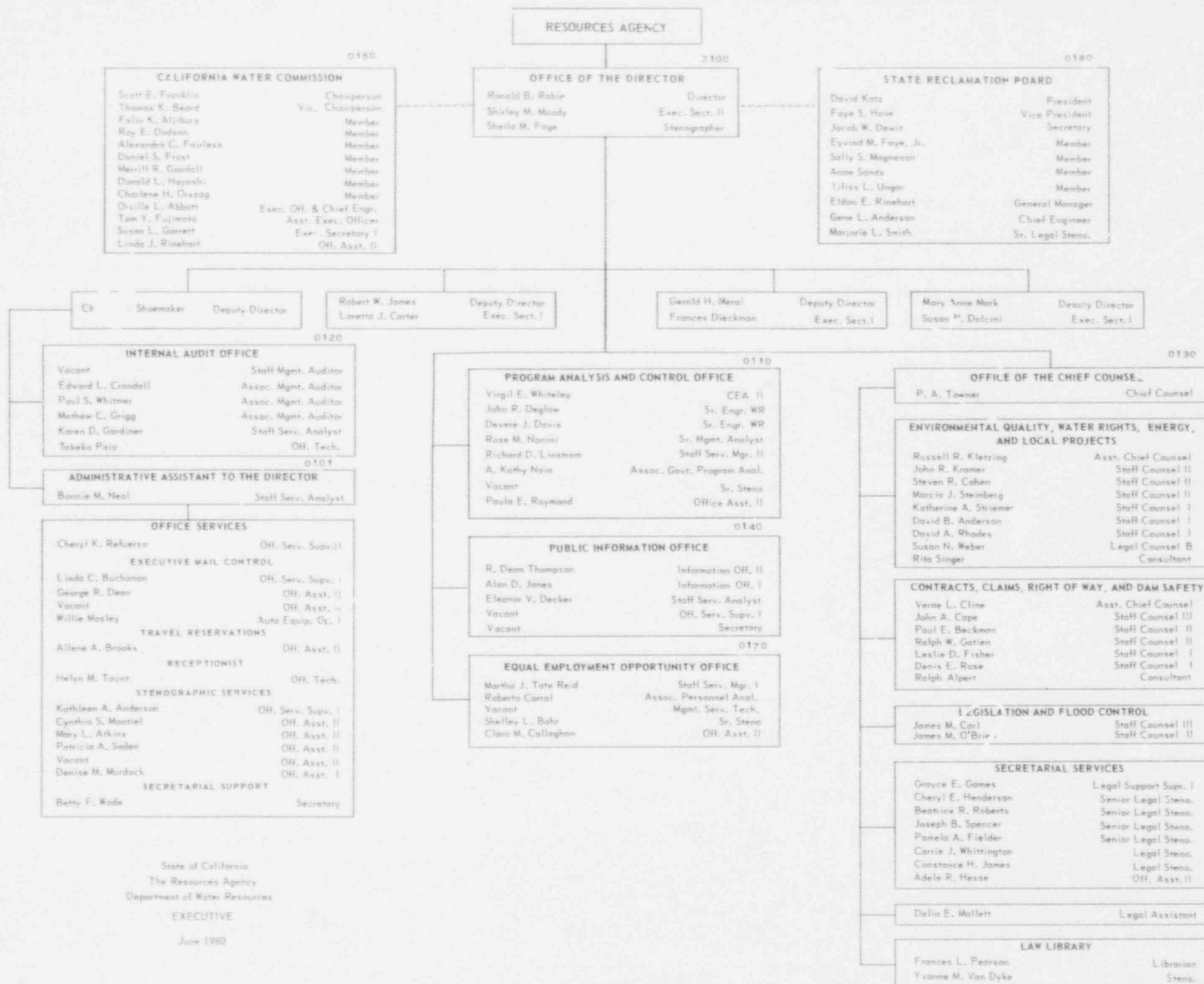
DATED: February 13, 1981

GEORGE DEUKMEJIAN, Attorney General  
of the State of California  
SANFORD N. GRUSKIN,  
ROBERT H. CONNETT,  
Assistant Attorneys General  
of the State of California  
H. CHESTER HORN, JR.,  
MICHAEL J. STRUMWASSER,  
Deputy Attorneys General  
of the State of California

By Michael J. Strumwasser  
MICHAEL J. STRUMWASSER  
Deputy Attorney General

Attorneys for Intervenor  
Department of Water Resources

EXHIBIT "I"



DIVISION OF FISCAL SERVICES  
ORGANIZATION CHART

OFFICE OF THE DIRECTOR

DIVISION OF FISCAL SERVICES  
DEPUTY DIRECTOR  
EXECUTIVE SECRETARY

DEPUTY COMPTROLLER  
GENERAL ACCOUNTING

FISCAL SYSTEMS OFFICE  
SYSTEMS ANALYST  
EXECUTIVE SECRETARY

BUDGET OFFICE  
BUDGET ANALYST  
EXECUTIVE SECRETARY

COMPUTER SYSTEMS OFFICE  
SYSTEMS ANALYST  
EXECUTIVE SECRETARY

GENERAL ACCOUNTING OFFICE  
GENERAL ACCOUNTING OFFICER  
EXECUTIVE SECRETARY

PERSONNEL COST ACCOUNTING  
PERSONNEL COST ACCOUNTING OFFICER  
EXECUTIVE SECRETARY

FISCAL ACCOUNTING  
FISCAL ACCOUNTING OFFICER  
EXECUTIVE SECRETARY

POWER ACCOUNTING  
POWER ACCOUNTING OFFICER  
EXECUTIVE SECRETARY

PROPERTY ACCOUNTING  
PROPERTY ACCOUNTING OFFICER  
EXECUTIVE SECRETARY

CLERICAL UNIT  
CLERICAL UNIT OFFICER  
EXECUTIVE SECRETARY

CONTRACTOR ACCOUNTING OFFICE  
CONTRACTOR ACCOUNTING OFFICER  
EXECUTIVE SECRETARY

SAP BILLING AND FINANCING SECTION  
SAP BILLING AND FINANCING OFFICER  
EXECUTIVE SECRETARY

DEPARTMENTAL OFFICE BILLING  
DEPARTMENTAL OFFICE BILLING OFFICER  
EXECUTIVE SECRETARY

UTILITY COST ACCOUNTING SECTION  
UTILITY COST ACCOUNTING OFFICER  
EXECUTIVE SECRETARY

FISCAL PROCEDURES COORDINATION  
FISCAL PROCEDURES COORDINATOR  
EXECUTIVE SECRETARY

FISCAL RDP SYSTEMS COORDINATION  
FISCAL RDP SYSTEMS COORDINATOR  
EXECUTIVE SECRETARY

FISCAL SYSTEMS ANALYSIS  
FISCAL SYSTEMS ANALYST  
EXECUTIVE SECRETARY

PLANNING DISTRICTS PLANNING  
PLANNING DISTRICTS PLANNING OFFICER  
EXECUTIVE SECRETARY

INTERPRET COSTS/TECHNICAL SERVICES  
INTERPRET COSTS/TECHNICAL SERVICES OFFICER  
EXECUTIVE SECRETARY

SPECIAL STUDIES  
SPECIAL STUDIES OFFICER  
EXECUTIVE SECRETARY

STATE WATER PROJECT  
STATE WATER PROJECT OFFICER  
EXECUTIVE SECRETARY

WORK AUTHORITY CONTROL/  
EXPENDITURE PROJECTION  
WORK AUTHORITY CONTROL/EXPENDITURE PROJECTION OFFICER  
EXECUTIVE SECRETARY

SYSTEMS ANALYSIS AND PROGRAMMING  
SYSTEMS ANALYSIS AND PROGRAMMING OFFICER  
EXECUTIVE SECRETARY

END/IN/ TWO SYSTEMS GROUP  
END/IN/ TWO SYSTEMS GROUP OFFICER  
EXECUTIVE SECRETARY

CONTROL SYSTEMS GROUP  
CONTROL SYSTEMS GROUP OFFICER  
EXECUTIVE SECRETARY

BUSINESS SYSTEMS GROUP  
BUSINESS SYSTEMS GROUP OFFICER  
EXECUTIVE SECRETARY

TOP TIER SUPPORT STAFF  
TOP TIER SUPPORT STAFF OFFICER  
EXECUTIVE SECRETARY

OPERATIONS SECTION  
OPERATIONS SECTION OFFICER  
EXECUTIVE SECRETARY

KEY DATA SECTION  
KEY DATA SECTION OFFICER  
EXECUTIVE SECRETARY

COMPUTER OPERATIONS  
COMPUTER OPERATIONS OFFICER  
EXECUTIVE SECRETARY

LEGEND  
(1) PRIMARY-TIME  
(2) TRAINING AND DEVELOPMENT  
(3) ACCOUNTING SYSTEMS

STATE OF CALIFORNIA  
THE RESOURCES AGENCY  
DEPARTMENT OF WATER RESOURCES  
DIVISION OF MANAGEMENT SERVICES  
JULY 1, 1980

OFFICE OF THE DIRECTOR

DIVISION OF MANAGEMENT SERVICES

JOHN B. HARRIS  
DIRECTOR

DEPUTY CHIEF

WILLIAM A. JONES  
DEPUTY CHIEF

LABOR RELATIONS OFFICE

CLYDE B. JONES  
LABOR RELATIONS OFFICE

SAFETY OFFICE

WILLIAM A. JONES  
SAFETY OFFICE

MANAGEMENT ANALYSIS OFFICE

WILLIAM A. JONES  
MANAGEMENT ANALYSIS OFFICE

TRAINING OFFICE

WILLIAM A. JONES  
TRAINING OFFICE

PERSONNEL OFFICE

WILLIAM A. JONES  
PERSONNEL OFFICE

RECORDS

WILLIAM A. JONES  
RECORDS

TRANSCRIPTIONS

WILLIAM A. JONES  
TRANSCRIPTIONS

GRAPHIC SERVICES

WILLIAM A. JONES  
GRAPHIC SERVICES

AUDIO VISUAL EQUIP. POOL

WILLIAM A. JONES  
AUDIO VISUAL EQUIP. POOL

NOTION PICTURES-TV

WILLIAM A. JONES  
NOTION PICTURES-TV

AUDIO-VISUAL ART

WILLIAM A. JONES  
AUDIO-VISUAL ART

PHOTOGRAPHY

WILLIAM A. JONES  
PHOTOGRAPHY

BUSINESS SERVICES

WILLIAM A. JONES  
BUSINESS SERVICES

REPRODUCTION SERVICES

WILLIAM A. JONES  
REPRODUCTION SERVICES

RECORDS

WILLIAM A. JONES  
RECORDS

FILE STRATONS

WILLIAM A. JONES  
FILE STRATONS

DELTA SHOP

WILLIAM A. JONES  
DELTA SHOP

SON LUIS SHOP

WILLIAM A. JONES  
SON LUIS SHOP

COMMUNICATIONS OFFICE

WILLIAM A. JONES  
COMMUNICATIONS OFFICE

TECHNICAL AND ADMINISTRATIVE SERVICES SECTION

WILLIAM A. JONES  
TECHNICAL AND ADMINISTRATIVE SERVICES SECTION

SOUTHERN AREA

WILLIAM A. JONES  
SOUTHERN AREA

SHAKERSFIELD SHOP

WILLIAM A. JONES  
SHAKERSFIELD SHOP

CRATRIC SHOP

WILLIAM A. JONES  
CRATRIC SHOP

PEARLBLOSSOM SHOP

WILLIAM A. JONES  
PEARLBLOSSOM SHOP

MOBILE EQUIPMENT OFFICE

WILLIAM A. JONES  
MOBILE EQUIPMENT OFFICE

SERVICE MAINTENANCE SECTION

WILLIAM A. JONES  
SERVICE MAINTENANCE SECTION

NORTHERN AREA

WILLIAM A. JONES  
NORTHERN AREA

SACRAMENTO PARTS ROOM

WILLIAM A. JONES  
SACRAMENTO PARTS ROOM

SACRAMENTO SHOP

WILLIAM A. JONES  
SACRAMENTO SHOP

OROVILLE SHOP

WILLIAM A. JONES  
OROVILLE SHOP

DELTA SHOP

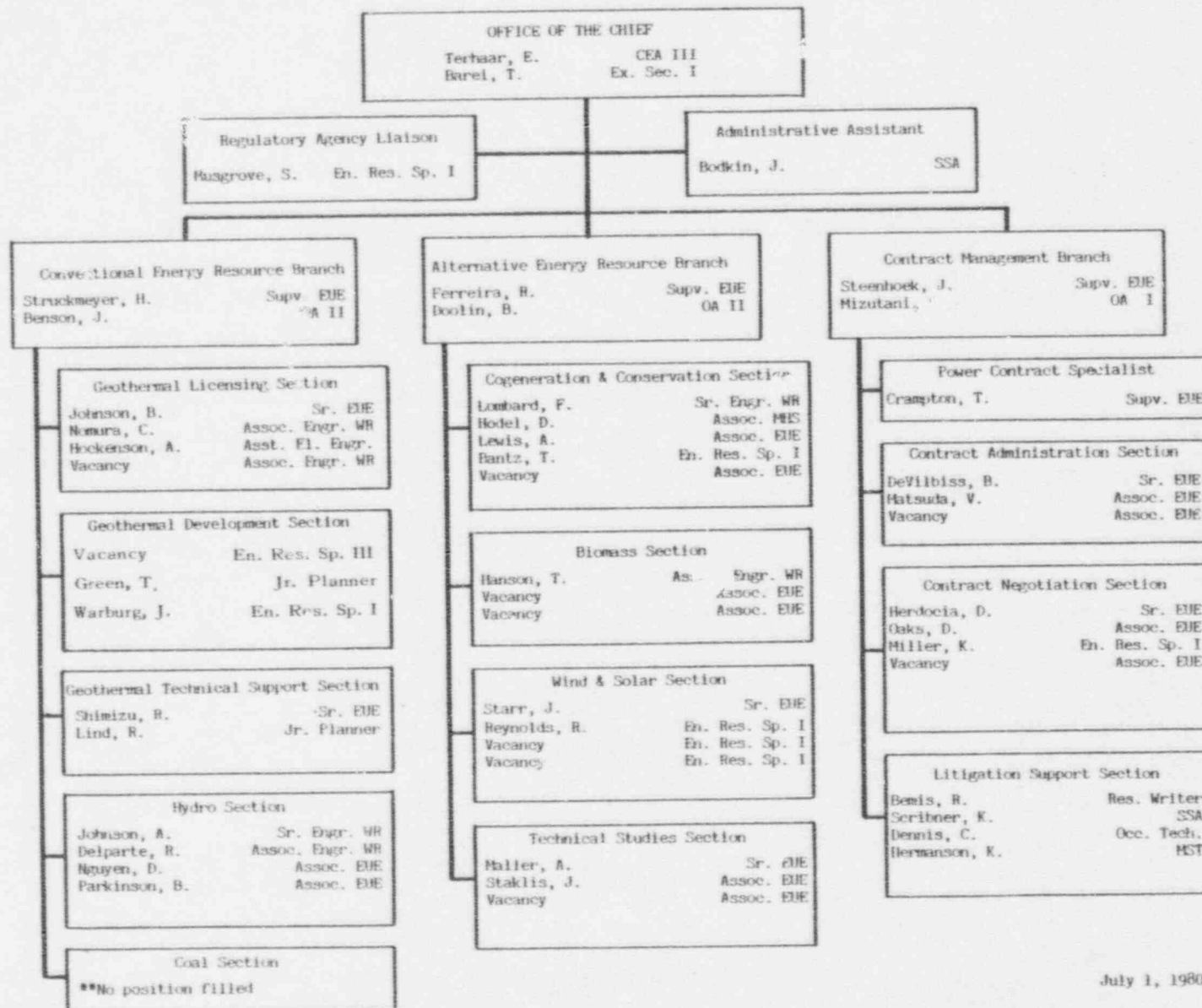
WILLIAM A. JONES  
DELTA SHOP

SON LUIS SHOP

WILLIAM A. JONES  
SON LUIS SHOP

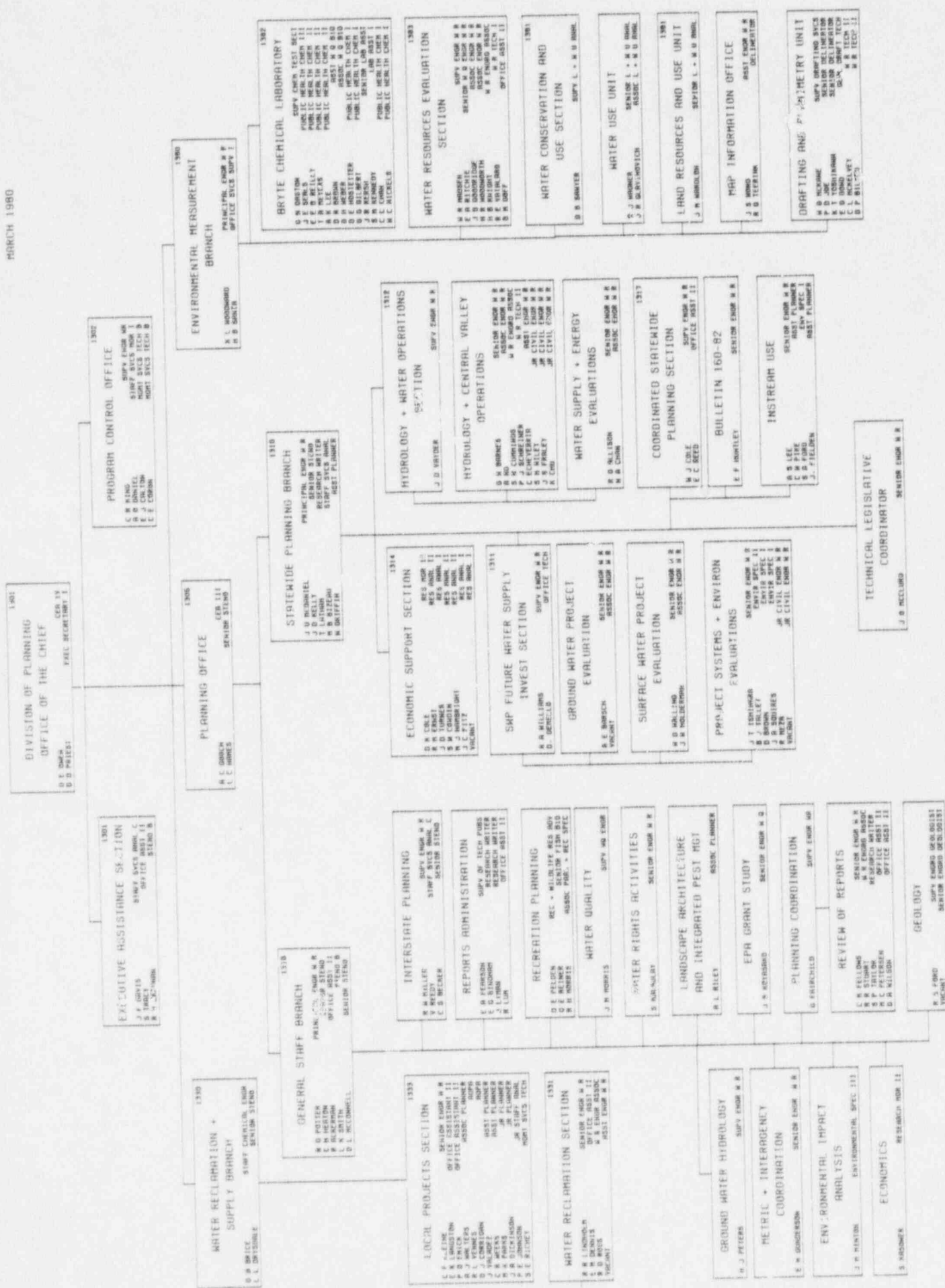


# ENERGY DIVISION



July 1, 1980

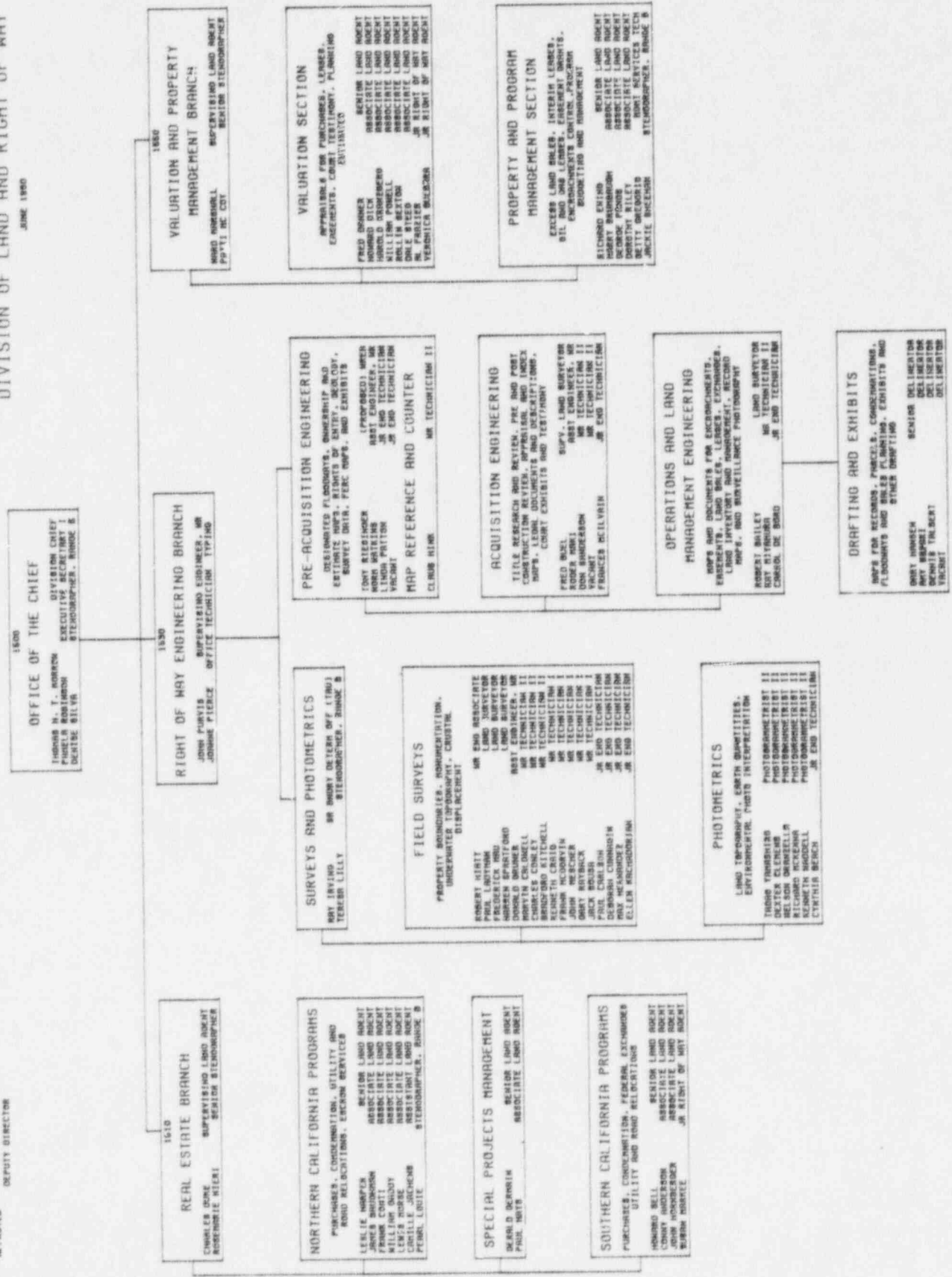


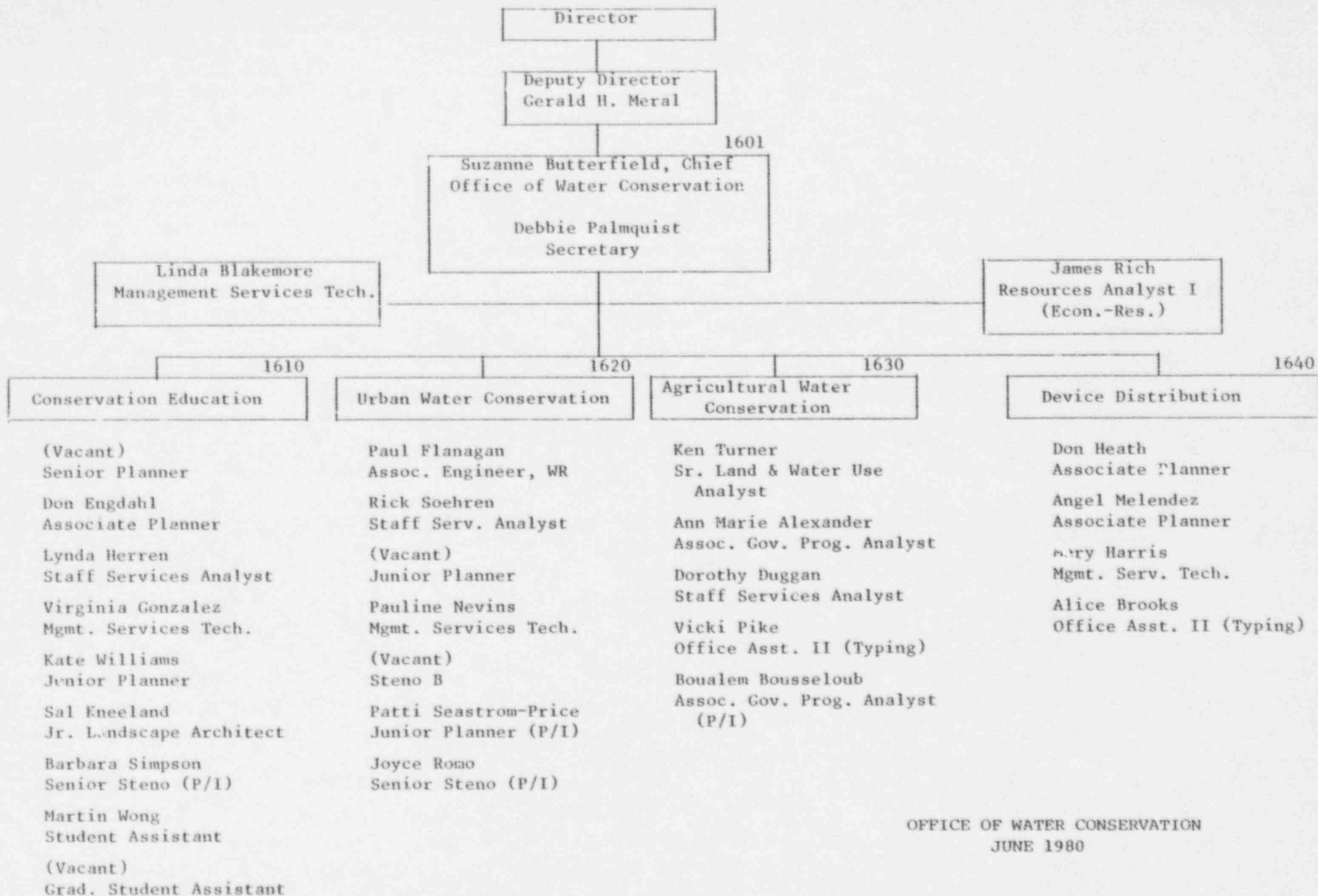


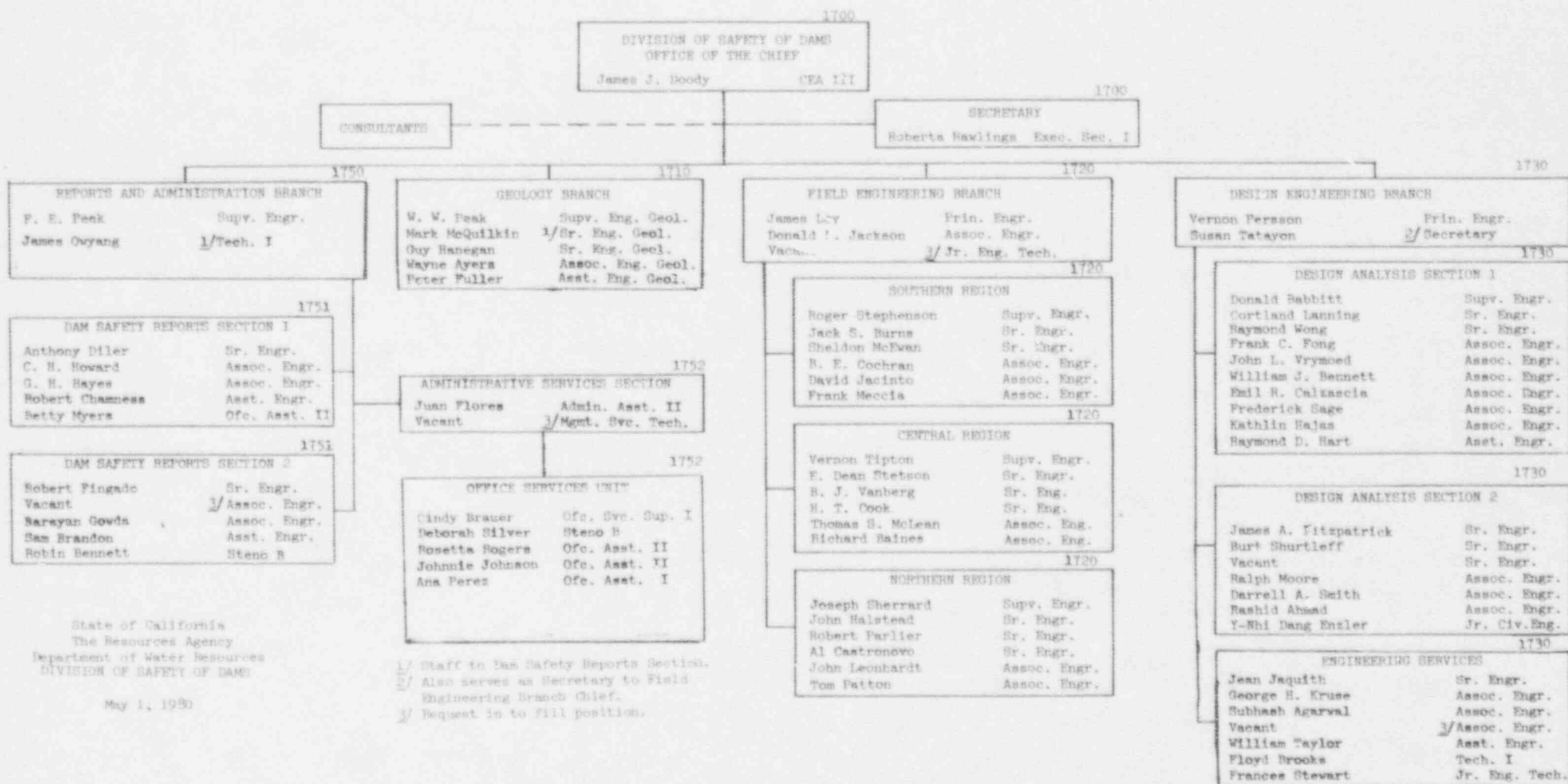


STATE OF CALIFORNIA  
THE RESOURCES AGENCY  
DEPARTMENT OF WATER RESOURCES  
DIVISION OF LAND AND RIGHT OF WAY  
JUNE 1950

APPROVED DIVISION CHIEF  
APPROVED DEPUTY DIRECTOR







1801

STATE OF CALIFORNIA  
THE RESOURCES AGENCY  
DEPARTMENT OF WATER RESOURCES  
State Water Project Analysis Office  
JULY 1980

# STATE WATER PROJECT ANALYSIS OFFICE

Vacant - Principal Engineer W.R.

Vacant - Secretary

1810

## PROJECT POWER BRANCH

J. Eaton  
F. Mercer

Supv. Engr. W. R.  
Sr. Steno

### LOADS AND RESOURCES SECTION

J. Filer      Assoc. E.U.E.  
Vacant      Assoc. E.U.E.  
Vacant      Assoc. E.U.E.

### POWER COSTS SECTION

T. Olds      Sr. E.U.E.  
Vacant      Asst. El. Engineer  
H. Ramirez      Asst. El. Engineer  
H. Smith      W.R. Engr. Assoc.

### UTILITY ANALYSIS AND REPORTS SECTION

K. Hedstrom      Sr. E.U.E.  
P. Chan      Asst. El. Engineer  
Vacant      Res. Prog. Spec. I

### POWER BILLING AND ACCOUNTING SECTION

E. Endres      Sr. E.U.E.  
R. Garcia      Assoc. E.U.E.  
J. Tonn      Assoc. E.U.E.

1820

## PROJECT WATER BRANCH

L. E. Swenson  
S. Shafer  
K. Burns

Supv. Engr. W.R.  
Sr. Steno  
Off. Tech. Typing

### COST ALLOCATION AND REPAYMENT SECTION

D. Long      Sr. Engineer  
J. Cason      Assoc. Engineer  
D. Williams      Assoc. Data Process Anal.  
J. Heiman      Asst. Engineer  
R. Cargill      Asst. Engineer  
M. Hutchinson      SSA  
Vacant      SSA  
Vacant      Res. Anal. I

### FINANCIAL ANALYSIS AND FUTURE SWP FACILITIES SECTION

D. Letl      Sr. Engineer  
D. Hitzeman      Assoc. Engineer  
D. Cleavinger      Assoc. Engineer  
G. Lembi      Res. Anal. I

### CONTRACT ADMINISTRATION AND WATER OPERATION COORDINATION SECTION

R. Stieger      Sr. Engr.  
T. Rhody      \* Sr. Engr.  
J. Rader      Assoc. Gov. Prog. Anal.  
C. Wong      Asst. Engr.  
E. Robbins      W.R. Tech. II

\* To be reclassified after 7-7-80

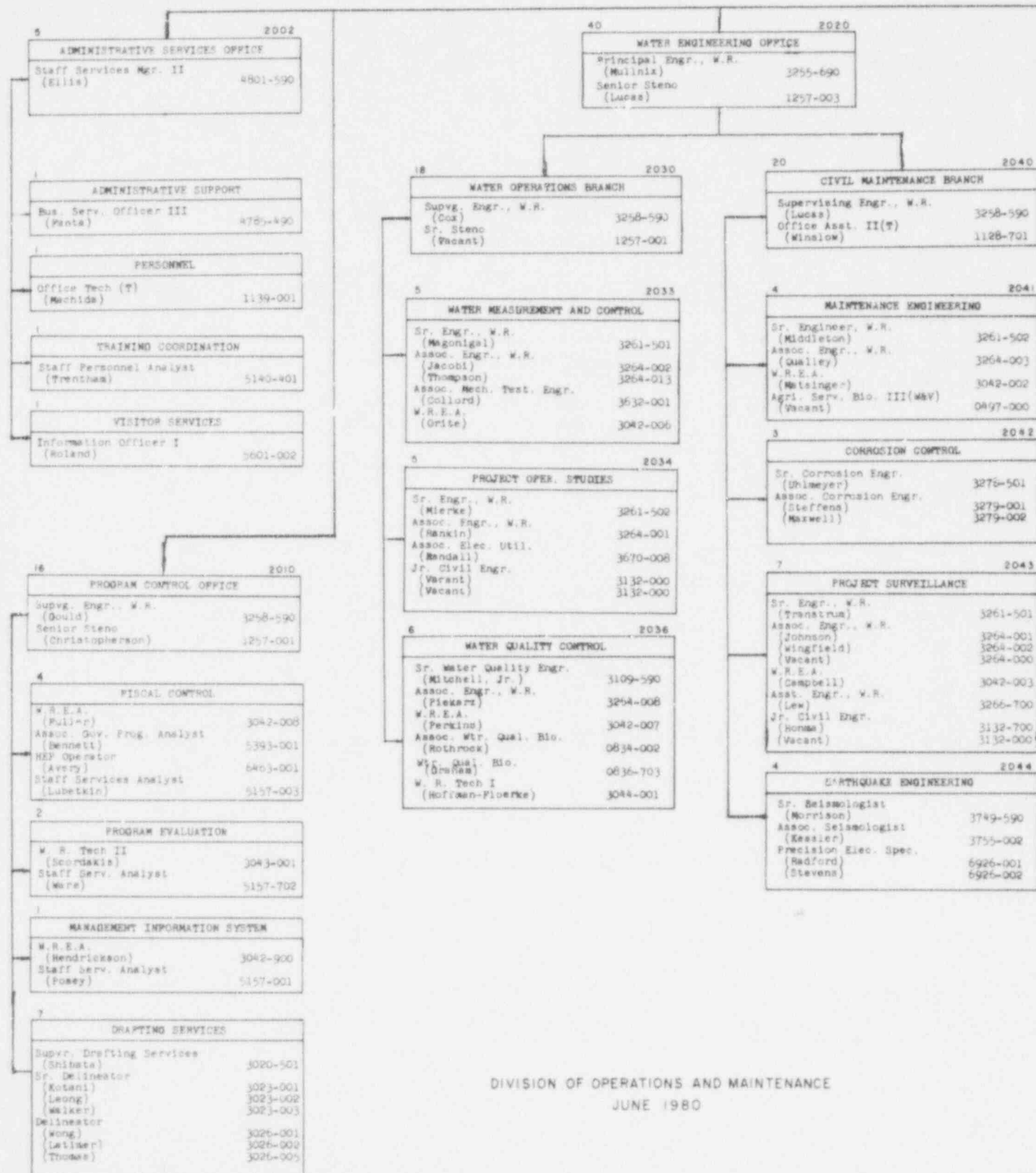






## OFFICE OF THE

Division Chief, CEA  
(Eastin)  
Executive Secretary  
(Brockman)



DIVISION OF OPERATIONS AND MAINTENANCE  
JUNE 1980

3410  
PROGRAM CONTROL AND  
ENGINEERING SERVICES OFFICE  
JAMES G. SELF SUPV ENGINEER, WR  
DOROTHY SUMNER OFF TECH

3411  
TYPING POOL  
EDNA M. MUSIAL OFF SERV SUPV  
RUTH J. HARRIS OFF ASST II  
DENISE SILVIA OFF ASST II  
MARILYN EVANS OFF ASST II

3412  
COST AND ANALYSIS  
ROY C. TROUGH SR ENGINEER, WR  
T. A. LEE ASSOC BUDGET ANALYST  
JAMES L. FIERHINE ASST ENGINEER, WR  
JOSEPHINE MARTELLO ASST SERV TECH

3413  
SCHEDULING AND EVALUATION  
GEORGE A. LINDER SR ENGINEER, WR  
BILLY E. MORRISON ASSOC ENGINEER, WR  
FRANK VALDES ASSOC ENGINEER, WR

3414  
ADMINISTRATIVE SERVICES  
LOIS E. STEINMAN STAFF SERV ANALYST  
ANGIE V. EDGINGTON ASST SERV TECH

3415  
DRAFTING SERVICES  
J. CLIFF JONES STRUC DRAFT TECH III  
BARBARA J. WILES SR DELINEATOR

3416  
SPECIFICATIONS AND TECHNICAL  
RECORDS  
W. T. VEDERA SR SPEC WRITER  
FRANK D. HILLBLOM ASSOC SPEC WRITER  
ROGER J. WILSON ASSOC SPEC WRITER  
W. H. COURTNEY MECH ENGR TECH II

3417  
COST ESTIMATING  
JOHN A. BEYER SR COST ESTIMATOR  
THOMAS J. MCWALL ASSOC COST EST  
WILLIAM J. DUNN ASSOC COST EST  
ERNEST E. STONE ASSOC COST EST  
ROY D. SLOTT MECH ESTIMATOR II

3418  
SOILS AND CONCRETE LAB  
ALVIN J. JACINTO WR ENGR ASSOC  
JAMES W. STAMPER WR TECHNICIAN II  
HARRY M. KASHIMIRO WR TECHNICIAN I

3419  
GENERAL ENGINEERING  
EUGENE F. POE SUPV ENGINEER, WR  
HAROLD J. GARDER SR ENGINEER, WR  
WILLIAM S. DRYFAS, JR ASSOC ENGINEER, WR  
PAUL W. SWINDOME WR ENGR ASSOC I  
LEONARD R. GOODENOUGH ASST ENGINEER, WR  
CARROLL L. SNEY STRUC DRAFT TECH II

3420  
DAVE MARTINEZ SR ENGINEER, WR  
GEORGE J. GOSSEL ASSOC ENGINEER, WR  
WILLIAM D. STOKES ASSOC ENGINEER, WR  
DONALD T. KUROSKA ASSOC ENGINEER, WR  
RONALD LEE ASST ENGINEER, WR  
EDWARD J. SARRATO WR TECHNICIAN II  
RAY P. SACKS STRUC DRAFTING TECH II  
GERNETTE D. KIMBER JR CIVIL ENGR

3421  
HERBERT C. WIDE SR ENGINEER  
DARRELL A. SMITH ASSOC ENGR  
JOHN A. GUISHERARY WR ENGR ASSOC  
JAMES H. LINDGREN ASST ENGR SPEC  
CLARENCE A. LUNDEN JR CIVIL ENGR  
MICHAEL S. DARMONE JR CIVIL ENGR  
RICARDO L. FORTES JR CIVIL ENGR

3422  
CIVIL DESIGN BRANCH  
ERNEST C. JAMES PRINCIPAL ENGINEER, WR  
SHIRLEY J. COFFELT SR STENOGRAPHER  
ROBERTA D. SELLINGER OFF ASST II

3423  
DAMS AND CANALS  
WILLIAM H. VERIGIN SUPV ENGINEER, WR  
DANN J. STAFFORD SR ENGINEER, WR  
STEPHEN L. KASHIMIRO ASSOC ENGINEER, WR  
ANDREW P. GEORGE ASSOC ENGINEER, WR  
TED TUCON ASSOC ENGINEER, WR  
ERNEST M. BOULLON WR ENGR ASSOCIATE  
STANLEY A. GET ASST ENGINEER, WR  
GARY T. JOHNSON ASST ENGINEER, WR

3424  
WILLIAM HARRISON SR ENGINEER, WR  
DEAN H. SMITH, JR ASSOC ENGINEER, WR  
LESLIE F. HANDED ASSOC ENGINEER, WR  
JOHN E. BRIND WR TECHNICIAN II  
RAPHAEL A. TORRES JR CIVIL ENGR

3425  
STEPHEN H. CHAN SR ENGINEER  
ARNOLD F. NICOLAUS ASSOC ENGINEER, WR  
RICHARD W. FISCHER WR TECHNICIAN II  
TOON Y. FONG JR CIVIL ENGR  
WILLIAM A. LEE JR CIVIL ENGR

3426  
PAUL W. PEDONE STRUC DRAFT TECH III  
JOHN KELLER STRUC DRAFT TECH II  
ELIOT DUNN STRUC DRAFT TECH II  
BETTY KENNEDY OFFICE ASST II

3427  
PLANTS AND PIPELINES  
NATION PENA SUPV ENGINEER, WR  
KENNETH H. KOSYBOW SR ENGINEER, WR  
ALFRED D. ROCA ASSOC ENGINEER, WR  
DONALD F. COLSON ASSOC ENGINEER, WR  
DIEER H. DAMHER ASSOC ENGINEER, WR  
ANDR DEBUTELS ASST ENGINEER, WR  
WILLIAM M. LEE STRUC DRAFT TECH II  
STEPHEN H. LIGHTNER JR CIVIL ENGR

3428  
WALCOLA N. STEPHENS SR ENGINEER, WR  
JACK H. WELLS SR ASSOC ENGINEER, WR  
ROBERT H. WRIGHT ASSOC ENGINEER, WR  
JEFFREY R. PATTERSON ASSOC ENGINEER, WR  
GEORGE J. SUPP ASSOC ENGINEER, WR  
RICHARD J. DECIO ASST ENGINEER, WR  
KENNETH L. THOMPSON STRUC DRAFT TECH II

3429  
GLENN L. ATKINSON SR ENGINEER, WR  
FRANK D. BOTTARD ASSOC ENGINEER, WR  
JAMES D. LOUIS ASSOC ENGINEER, WR  
CHLY MATSON ASSOC ENGINEER, WR  
STEPHEN VERIGIN ASST ENGINEER, WR  
ALBERT Y. WONG STRUC DRAFT TECH II  
JEANINE JONES JR CIVIL ENGR

3430  
STRUCTURAL  
DONALD C. STEINERT SUPV ENGINEER, WR  
AROLD E. LEWEL SR ENGINEER, WR  
LEWIS H. PRITTEEN ASSOC ENGINEER, WR  
LAWL HOLLANDER ASSOC ENGINEER, WR  
WILLIAM H. FUTHILL STRUC DRAFT TECH III  
TERRY BEYER JR CIVIL ENGR  
SHARON S. KALIN JR CIVIL ENGR

3431  
SAMUEL J. LIND, JR SR ENGINEER, WR  
CURTIS R. DANFORTH ASSOC ENGINEER, WR  
DAVID W. WILD ASSOC ENGINEER, WR  
KENNETH G. BUCHER ASSOC ENGINEER, WR  
LEONARD R. WALKER ASST ENGINEER, WR  
TA-CHING LIU ASST ENGR SPEC CIVIL  
FRED T. KASHIMIRO STRUC DRAFT TECH II

3432  
EUGENE R. BELDONIE SR ENGINEER, WR  
PAUL LEM ASSOC ENGINEER, WR  
ARTHUR J. DUNN ASSOC ENGINEER, WR  
JAMES A. ALBRIGHT, JR STRUC DRAFT TECH III

3433  
ARCHITECTURAL  
FRANK V. LEE SUPV ARCHITECT  
ROONEY A. SECCHETTINI SR ARCHITECT  
EDWARD W. FONG ASSOC ARCHITECT  
BENNY A. KAPLAN ASSOC ARCHITECT  
RICHARD HAY ARCHITECT ASSOC  
CHARLES M. LOUIS ARCHITECT ASSOC  
JOSE LINAN ARCHITECT ASST

3401  
DESIGN OFFICE  
KEITH G. BARRETT CER III  
ART KUDERER SR STENOGRAPHER

3441  
MECHANICAL-ELECTRICAL DESIGN  
BRANCH  
ROBERT E. RUTHERFORD PRIN. E. ENGR. KS  
DAVID P. KALBS ASSOC MECH ENGR, HS  
DORNA A. FONG SR STENOGRAPHER  
JO ANN JIRAL OFF ASST II

3442  
PUMPING PLANTS - MECHANICAL  
SAMUEL FONG SUPV MECH ENGR, HS  
DONALD L. SMITH SR MECH ENGR, HS  
TOMY ALFIDI ASSOC MECH ENGR, HS  
WANDER L. CHUGHAN ASSOC MECH ENGR, HS  
PAUL LEE ASSOC MECH ENGR, HS  
D. LAWRENCE VELL ASST MECH ENGR, HS  
W. COLA GEE MECH ENGR TECH II

3443  
W. BERT WONG SR MECH ENGR, HS  
EDWARD D. DANIELS ASSOC MECH ENGR, HS  
ROGER L. HENRY ASSOC MECH ENGR, HS  
DAVID L. NELSON ASSOC MECH ENGR, HS  
FORREN LEE MECH ENGR TECH II

3444  
EDWIN L. STRENS SR MECH ENGR, HS  
RODINALD Z. HUTCHINSON ASSOC MECH ENGR, HS  
KENNETH H. QUINN ASSOC MECH ENGR, HS  
ARTHUR HOY ASSOC MECH ENGR, HS  
FREDERICK B. AGNEVILLE ASSOC MECH ENGR, HS  
PHILLIP A. LAM MECH ENGR TECH II

3445  
POWER PLANTS - MECHANICAL  
ROBERT W. EHRHART SUPV MECH ENGR, HS  
JOHN CARROLL SR MECH ENGR, HS  
SMITH C. ELL ASSOC MECH ENGR, HS  
B. B. WOODER MECH ENGR TECH II  
HOWARD S. KIZUTANI

3446  
A. J. HOFFMAN SR MECH ENGR, HS  
NORMAN T. HANSEN ASSOC MECH ENGR, HS  
KENNETH KYLE ASSOC MECH ENGR, HS  
RICHARD E. WERNER ASST MECH ENGR  
JAMES L. JOHNSON DELINEATOR  
MICHAEL W. HOLSCOC DELINEATOR

3447  
SHOGO A. KIMOTO SR MECH ENGR, HS  
HORACIO N. VIANEZA ASSOC MECH ENGR, HS  
CALVIN S. WONG ASSOC MECH ENGR, HS  
SEN H. YOUNG SR DELINEATOR  
BARBARA J. PENABRO DELINEATOR

3448  
POWER AND PUMPING PLANTS -  
ELECTRICAL  
ALBERT C. TORRES SUPV ELEC ENGR, HS  
WILSON M. LANTRELL SR ELEC ENGR, HS  
PAUL D. WENBASS ASSOC ELEC ENGR, HS  
WILLIAM L. PATTERSON ASSOC ELEC ENGR, HS  
RICHARD C. MEIER ELEC ENGR TECH II  
WILLIAM B. WICKENTZ ELEC ENGR TECH II

3449  
Cecil W. Smith SR ELEC ENGR, HS  
ARLUND H. BURNHAYTER ASSOC ELEC ENGR, HS  
DARREL L. MARTIN ASSOC ELEC ENGR, HS  
STANLEY LEM ASSOC ELEC ENGR, HS  
EDWARD A. LEE ASST ELEC ENGR  
ROBERT M. YONG ELEC ENGR TECH II  
HARRISON J. FONG ELEC ENGR TECH II  
JOHN M. CHAN JR ELEC ENGR

3450  
LYD A. ALLEN SR ELEC ENGR, HS  
BERNARD J. MCLENDON ASSOC ELEC ENGR, HS  
JOHN F. MINNET ASSOC ELEC ENGR, HS  
BARRY WILSON ASSOC ELEC ENGR, HS  
DARYL C. DRAVIER ASSOC ELEC ENGR, HS  
ALDON V. ROTT ELEC ENGR TECH II  
R. W. VAN DER VOLDEN DRAFTING AID  
TERRY W. DOWNE DELINEATOR  
GILBERTA LUDWIG JR ELEC ENGR

PROJECT O  
JOHN W. MARLETTE  
WILMA KOTZED

DESIGN  
HAROLD ALLSUP  
RONALD BARTLETT  
LOUIS T. DUDLEY  
STEPHEN REYNOLDS  
FRANK SLICK  
ROBERT WALKER  
WILLIAM LENCART  
MICHAEL SHIMMARD

GEOLOGIC  
ROBERT MEERS  
FARHAD WAGHARIA

SPECIAL  
ELC  
GEORGE L. PAPATHAN  
PHILIP S. PERRINE  
ROBERT J. SONG  
ROBERT J. SONG  
BILL LEE  
WILLIAM V. VIRTANI  
MARION LANG

JIM V. DUFFINSON  
MICHAEL S. SWEAT  
ROY FUJII

ROBERT M. MCCOUGHER  
KEVIN T. FRANKLIN  
BRUCE HARR  
BRAND MURILLO

2001

## DIVISION CHIEF

IV	4304-690
I	1247-401

2050	
OPERATIONS CONTROL BRANCH	
Supvg. Engr., W.R. (McKillop)	3258-690
Office Tech (T) (Freitas)	1139-001
stenographer (Bennett)	1262-001

2051	
WATER & POWER SCHEDULING	
Engr., W.R. (Mayo)	3261-501
Assoc. Engr., W.R. (Gage)	3264-001
R.E.A. (Anderson)	3042-004
Est. Engr., W.R. (Vacant)	3266-701

SPECIAL ASSISTANT	
Sr. Power O&M Engr. (Krebs)	3684-001
W.R.E.A. (DeRose)	3042-002

2053	
PROJECT RECORDS & REPORTS	
Sr. Engr., W.R. (Lemons)	3261-002
Est. Engr., W.R. (Eshe)	3266-702
W.R.E.A. (Fields)	3042-003

UTILITY OPERATIONS	
Sr. Elec. Utili. Engr. (Peters)	3669-001

2052	
WATER AND POWER DISPATCHING	
Chief, Wtr & Pwr Dispatcher (Vacant)	6465-501

2080	
PROGRAM WTR & PWR DISPATCHER	
Asst. Chief Dispatcher (Jones)	6459-503
Wtr & Pwr Dispatcher (Ellis)	6466-900
(Johns)	6466-900
McWhirter)	6466-900
McAfee)	6466-900
Sald)	6466-900
Payton)	6466-900
r & Pwr Dispatcher (McGregor)	6467-900
(Garris)	6467-900
Peniston)	6467-900
Evans)	6467-900
Armstrong)	6467-900

OUTAGE SCHEDULES	
Program Wtr & Pwr Dispatcher (Dunn)	6459-501

RESCHEDULING	
Program Wtr & Pwr Dispatcher (Vacant)	6459-502

40

## PLANT ENGINEERING OFFICE

Principal Pwr O&M Engr. (Young)	3682-690
Office Tech (T) (Willie)	1139-001

2060

2070	
PLANT MAINTENANCE BRANCH	
Supvg. Pwr O&M Engr. (Curry)	3683-590
Management Serv. Tech. (Palmquist)	5278-001

DESIGN & ENERGY CONSERVATION COORDINATION	
Sr. Pwr O&M Engr. (Smith)	3684-001

2075	
ELECTRICAL MECHANICAL MAINTENANCE	
Sr. Pwr O&M Engr. (Devlin)	3684-501
Assoc. Pwr O&M Engr. (Burkett)	3685-003
(McCulloch)	3685-006

2073	
TESTING & ANALYSIS	
Sr. Elec/Mech Test Engr. (Warnock)	3630-502
Assoc. Pwr O&M Engr. (Geffs)	3685-005
(Poley)*	3685-007
Assoc. Elec Test Engr. (Bindra)	3631-002
E/M Test Tech III (Bane)	3663-001
(Wells)	3663-004
(Bewersdorf)	3663-005
Office Asst II (T) (Parial)	1128-701

\*On loan to San Joaquin P.D.

2080	
PLANT OPERATIONS BRANCH	
Supvg. Pwr O&M Engr. (Bondeson)	3683-590
Office Asst. II (T) (Foster)	1128-709

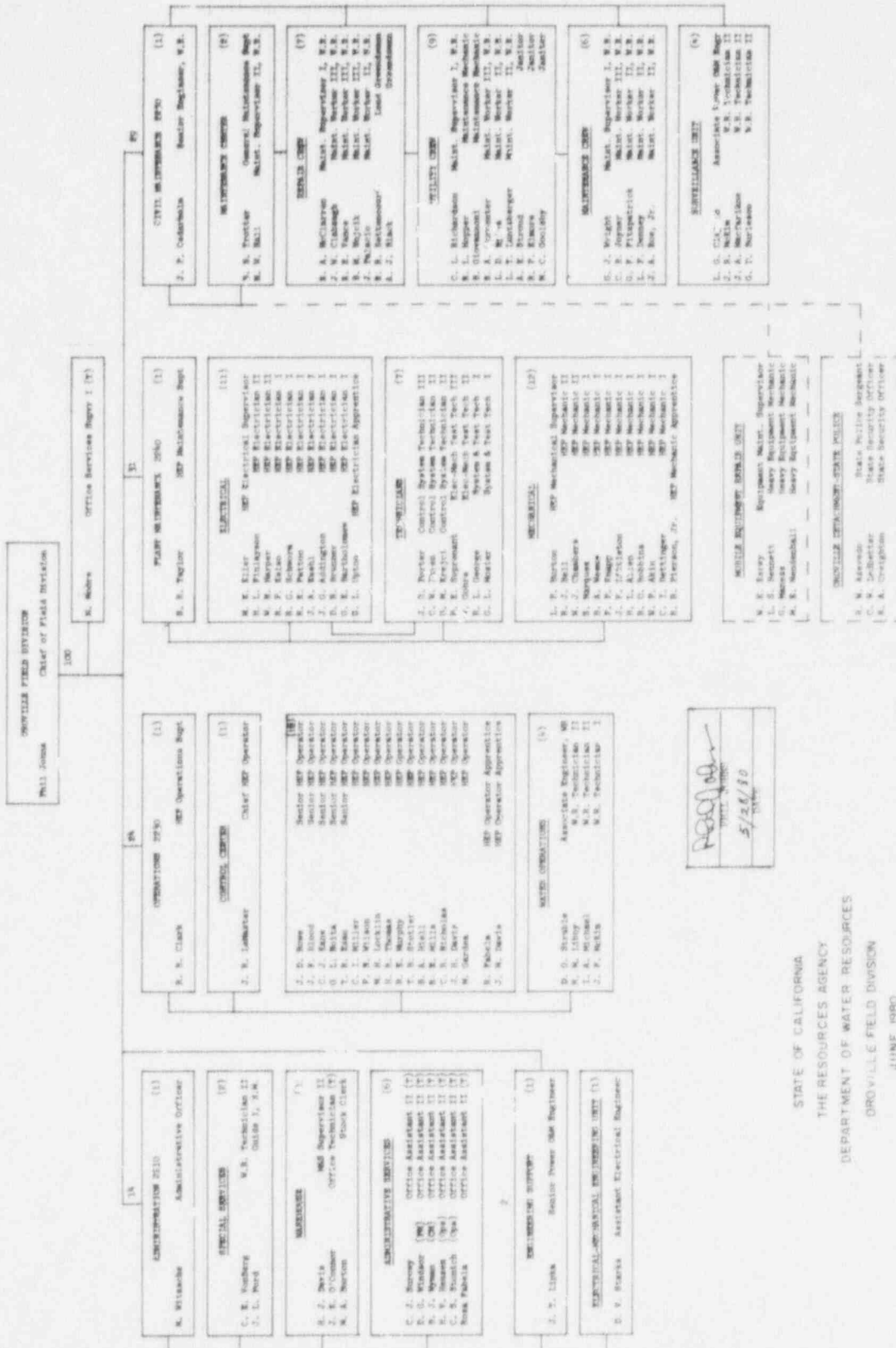
2081	
PLANT OPERATIONS	
Sr. Pwr O&M Engr. (Fleenor)	3684-502
Assoc. Pwr O&M Engr. (Yau)	3685-003
(Lawrence)	3685-005
(Kutter)	3685-007
Chief HEP Operator (Gordon)	6461-001

2082	
TECHNICAL DEVELOPMENT	
Sr. Mech/Elec Test Engr. (Mazlum)	3630-501
Assoc. Pwr O&M Engr. (Glade)	3685-002
W.R.E.A. (Baker)	3042-001
Research Writer (Ericson)	3617-001
Office Asst II (T) (Wright)	1128-700

2090	
CONTROL SYSTEMS BRANCH	
Supvg. Control Sys Engr (Delfin)	3683-590

2091	
CONTROL SYSTEMS ENGINEERING	
Sr. Cont. Sys Engr. (Cosper)	3658-501
Assoc. Cont. Sys Engr. (Liber)	3659-001
(Gent)	3659-002
(Gillette)	3659-004
(Emmerich)	3659-005

2092	
CONTROL SYSTEMS MAINTENANCE	
Sr. Cont. Sys Engr. (Bellard)	3658-503
Assoc. Cont. Sys Engr. (Somers)	3659-003
(Zarghami)	3659-006
Cont. Sys Tech III (Chertorisky)	3661-001
(Dent)	3661-002
Cont. Sys Tech II (Carrera)	3662-001



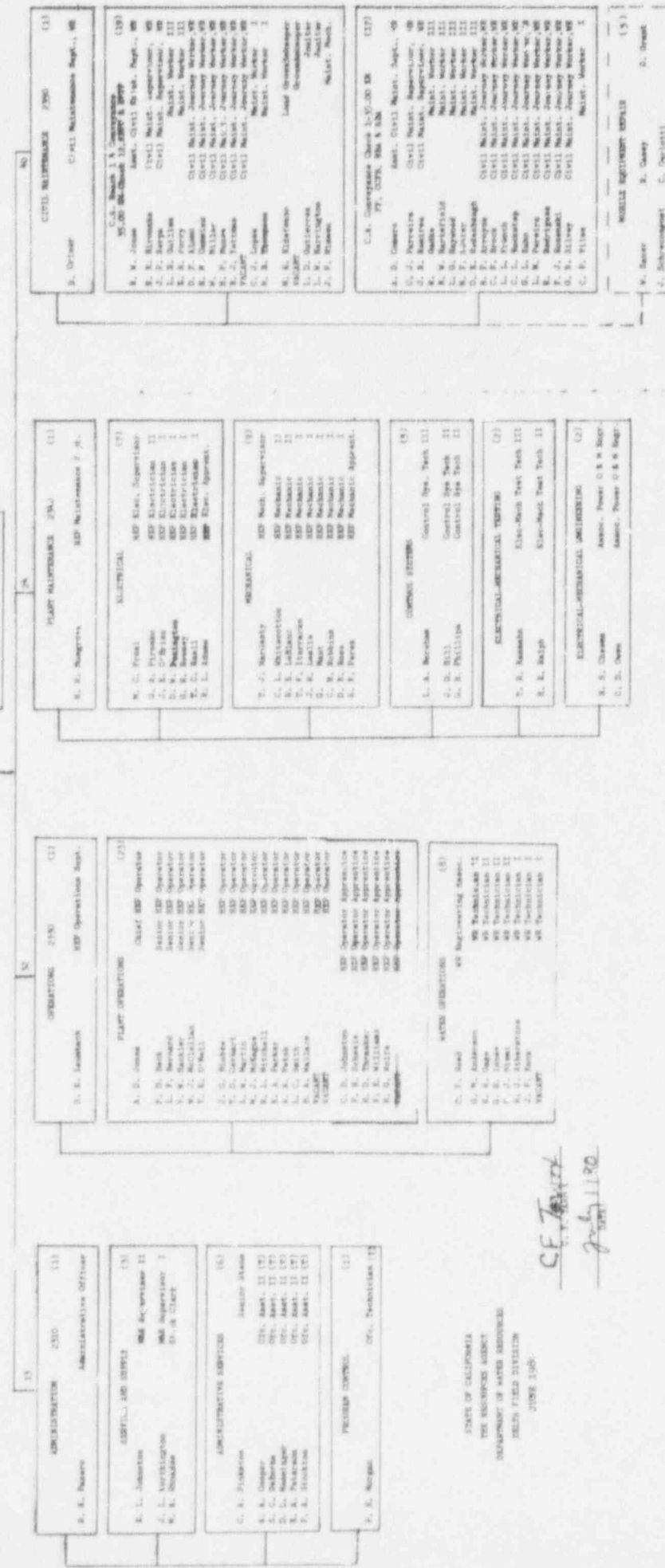
STATE OF CALIFORNIA  
THE RESOURCES AGENCY  
DEPARTMENT OF WATER RESOURCES  
OROVILLE FIELD DIVISION  
JUNE 1980

5/28/80  
TOM

WATER FIELD DIVISION  
J. F. Tarnum  
Chief of Field Division

Civil Engineering, Surveillance  
K. Palmer  
Asst. Supr. - 60  
7. J. Baker  
WB Technicians 11  
S. S. Richardson  
WB Technicians 11

W. J. Schuch  
Chf. Tech. (9)



CE Tarnum  
July 11, 1960

STATE OF CALIFORNIA  
THE RESOURCES AGENCY  
DEPARTMENT OF WATER RESOURCES  
WATER FIELD DIVISION  
JUNE 1960

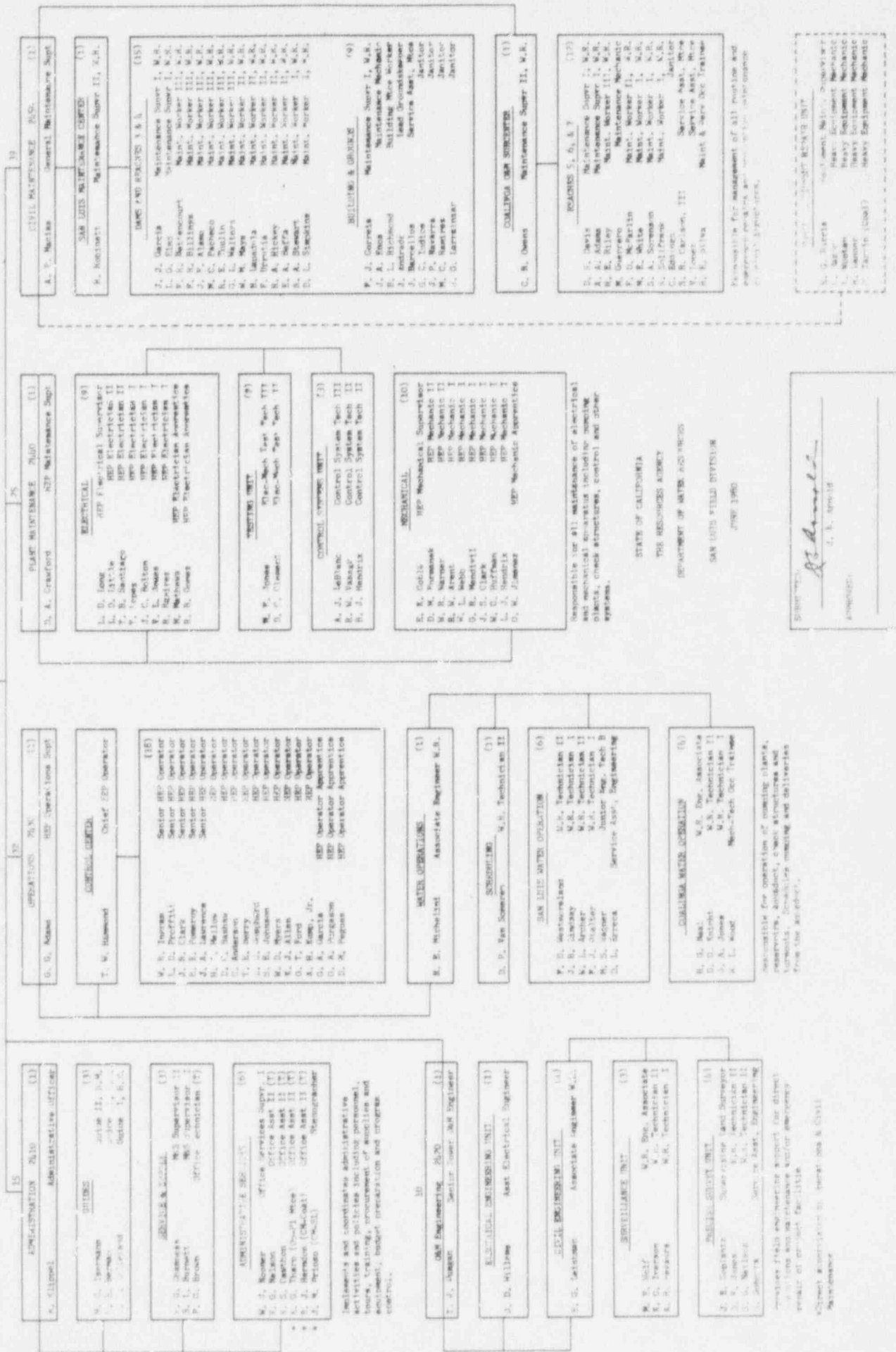


U.S. 1975 FIELD DIVISION - Area of Function responsible for operations and maintenance of features of the State Water Project between O'Neill Forebay and Red Bluff, including but not limited to operation of pumping plants, control systems, check structures and conduits.

Y. I. Kuznetsov

53

Year	Value	Unit
1990	100	100
1991	100	100
1992	100	100
1993	100	100
1994	100	100
1995	100	100
1996	100	100
1997	100	100
1998	100	100
1999	100	100
2000	100	100
2001	100	100
2002	100	100
2003	100	100
2004	100	100
2005	100	100
2006	100	100
2007	100	100
2008	100	100
2009	100	100
2010	100	100
2011	100	100
2012	100	100
2013	100	100
2014	100	100
2015	100	100
2016	100	100
2017	100	100
2018	100	100
2019	100	100
2020	100	100
2021	100	100
2022	100	100
2023	100	100
2024	100	100
2025	100	100
2026	100	100
2027	100	100
2028	100	100
2029	100	100
2030	100	100
2031	100	100
2032	100	100
2033	100	100
2034	100	100
2035	100	100
2036	100	100
2037	100	100
2038	100	100
2039	100	100
2040	100	100
2041	100	100
2042	100	100
2043	100	100
2044	100	100
2045	100	100
2046	100	100
2047	100	100
2048	100	100
2049	100	100
2050	100	100
2051	100	100
2052	100	100
2053	100	100
2054	100	100
2055	100	100
2056	100	100
2057	100	100
2058	100	100
2059	100	100
2060	100	100
2061	100	100
2062	100	100
2063	100	100
2064	100	100
2065	100	100
2066	100	100
2067	100	100
2068	100	100
2069	100	100
2070	100	100
2071	100	100
2072	100	100
2073	100	100
2074	100	100
2075	100	100
2076	100	100
2077	100	100
2078	100	100
2079	100	100
2080	100	100
2081	100	100
2082	100	100
2083	100	100
2084	100	100
2085	100	100
2086	100	100
2087	100	100
2088	100	100
2089	100	100
2090	100	100
2091	100	100
2092	100	100
2093	100	100
2094	100	100
2095	100	100
2096	100	100
2097	100	100
2098	100	100
2099	100	100
2100	100	100



SAN JOAQUIN FIELD DIVISION

Mr. S. Boster, Chief, San Joaquin Field Division

W. Bell	Office Tech. Typing
---------	---------------------

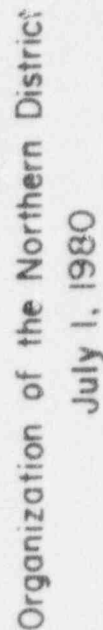
[illegible][illegible]

1000

Approved: *Wm. L. Becher*  
 R. C. BECHER, MASTER  
 No. 2, South 10th Street







July 1, 1980

6001  
CENTRAL DISTRICT  
CHIEF  
Wayne MacRostie CEA III

6001  
STENOGRAPHIC SECTION  
L. Harnsted Ex. Sec'y I  
J. Topper Sr. Sec'y  
C. Wilson Word Proc. Tech.

6001  
PLANNING OFFICE  
R. Maling Public Engr., WR

6100  
ADMINISTRATIVE BRANCH  
M. Brennan Reg. Admin. Officer II  
M. Spafford Off. Asst. II (Typing)

6200  
SPECIAL STUDIES BRANCH  
R. McDowell Supv. Engr., WR

6300  
DATA AND OPERATIONS  
L. Carter Supv. Engr., WR

6800  
DELTA BRANCH  
R. Katsberger Supv. Engr., WR

SECRETARIAL SERVICES  
D. Martinez Sr. Sec'y  
M. Manning Sec'y  
J. Van Dyke Off. Asst. II (Typing)  
M. Gifford Off. Asst. II (Typing)  
C. Walker Off. Asst. II (Typing)  
S. Holderness Off. Asst. II (Typing)

SECRETARIAL SERVICES  
S. Blake Sr. Sec'y  
Vacant Off. Asst. II (Typing)

PROGRAM CONTROL SERVICES  
M. Ross Mgmt. Sr. Tech.

SECRETARIAL SERVICES  
C. VanBunt Sr. Sec'y  
K. Henderson Sec'y  
I. Kane Sec'y  
J. Fong Sec'y

BUSINESS SERVICE SECTION  
P. Caring Property Clerk I  
T. Stevenson Off. Asst. II (Typing)

PROGRAM CONTROL  
PERSONNEL AND FISCAL SECTION  
C. Patterson Mgmt. Sr. Tech.  
S. Liza Personnel Asst. I  
R. Nelson Accounting Tech.

CENTRAL RECORDS SECTION  
R. Gelman Off. Sec'y I (Filing)  
B. Villanueva Off. Asst. II (Typing)  
M. Brown Off. Asst. II (Typing)  
S. Burke Sec'y  
Vacant Off. Asst. II (General)

6201  
WATER QUALITY AND REUSE  
R. Archer Sr. WQ Engr.  
R. Woodard Assoc. WQ Biologist  
Vacant Assoc. Engr., WR  
D. Perkins WR Engr. Assoc.  
W. McCune WR Engr. Assoc.  
J. Lusk WR Tech. II  
T. Magister WR Tech. II

6203  
LAND AND WATER USE  
C. Salt Sr. L&W Analyst  
R. Cichak Assoc. L&W Analyst  
V. Kow Assoc. L&W Analyst  
C. Novak Assoc. L&W Analyst  
M. Jones WR Engr. Assoc.  
C. Morris Jr. L&W Analyst  
H. Inoué Sr. Designer  
Vacant Designer

6201  
GROUND WATER AND GEOLOGY  
L. Mitchell Sr. Engr., WR  
vacant Asst. Engr., WR  
R. McGee WR Tech. II  
vacant Jr. Civil Engr.  
vacant Sr. Engr. Geol.  
C. Newmarch Assoc. Engr. Geol.  
D. Herbst Jr. Engr. Geol.  
R. Swenson Geologist Asst.

6204  
ECONOMICS  
R. Haglund Research Mgr. II  
L. Fournelle Research Analyst II  
R. Henderson Research Analyst I

6208  
PLANNING STUDIES  
H. Higgins Sr. Engr., WR  
M. Norwood Assoc. Engr., WR  
H. Mann Assoc. Engr., WR  
J. Feneis WR Engr. Assoc.  
G. China Asst. Engr., WR  
B. Bie WR Tech. II

6202  
FLOOD CONTROL AND  
FINANCIAL ASSISTANCE  
N. Tenny Sr. Engr., WR  
R. Manning Assoc. Engr., WR  
R. Newton Assoc. Engr., WR  
C. Koss Assoc. Engr., WR  
C. Kestner Assoc. Engr., WR  
W. Drake WR Engr. Assoc.  
R. Lawler Asst. Civil Engr.  
D. Lawton Jr. Civil Engr.  
R. Noll WR Tech. II

6301  
DATA AND EVALUATION  
E. Labrie Sr. Engr., WR

WATER QUALITY  
C. Archer WR Engr. Assoc.  
D. Nakai WR Tech. II  
H. Weber WR Tech. II  
D. Schader WR Tech. I  
D. Riley WR Tech. I

EVALUATION AND EDP  
C. Senkbe Asst. Engr., WR  
T. Marzotto WR Tech. II  
D. Dahl Jr. Engr. Tech.  
B. Daugherty Serv. Asst. - Engr.

SURFACE WATER DATA  
E. Padgett WR Engr. Assoc.  
J. Jones Asst. Engr., WR  
E. Denney WR Tech. II  
J. Kuffer WR Tech. II  
R. Pundeloh WR Tech. II

ELECTRICAL SYSTEMS  
H. Gekhard Asst. Cont. Sys. Analyst

PERIPHERAL CANAL AND  
WESTERN DELTA  
SOIL SALINITY UNIT  
F. Lither Asst. L&W Analyst  
J. Sengstack Asst. Engr., WR  
R. Sorenson WR Tech. I

6302  
OPERATIONS  
R. Franson Sr. Engr., WR

APPLICATION REVIEW  
G. Piazza WR Engr. Assoc.  
V. Choo Asst. Engr., WR  
N. Lufftapp WR Tech. II  
C. MacIsaac WR Tech. II  
D. Tice Jr. Engr. Tech.

INSPECTION UNIT  
R. Scott WR Engr. Assoc.  
F. McCrehan Asst. Engr., WR  
K. Quier WR Tech. II  
E. Warfield WR Tech. II  
D. Vanden WR Tech. II  
P. Elsie WR Tech. II  
P. Naphas WR Tech. I  
Vacant Asst. Engr., WR

BECKWORTH FIELD OFFICE  
H. Nessler WR Engr. Assoc.  
E. Stover WR Engr. Assoc.  
C. Lutz WR Engr. Assoc.  
J. Hesper Mgmt. Worker II

6801  
WATER QUALITY OPERATIONS  
PLANNING  
R. Lerseth Sr. Engr., WR  
K. Bunker Assoc. WQ Engr.  
M. Ford Jr. Civil Engr.  
R. Mayer Jr. Civil Engr.  
Vacant Asst. Engr., WR  
Vacant Asst. Engr., WR

6802  
FISH FACILITIES  
R. Brown Sr. WQ Biologist  
L. Smith Assoc. Engr., WR  
D. Ferguson Assoc. Engr., WR  
R. Lundford Assoc. WQ Engr.  
M. Reese Assoc. WQ Engr.  
J. Glosbery WR Tech. II  
L. Weste WR Tech. II  
J. Nardella Jr. Engr. Tech.  
Vacant Asst. Engr., WR  
Vacant Asst. Engr., WR

6803  
WATER CONTRACTS MANAGEMENT  
C. DeLong Sr. Engr., WR  
C. Spencer Assoc. Engr., WR  
J. Payne Assoc. Engr., WR  
K. Fisher WR Engr. Assoc.  
R. Porterfield WR Engr. Assoc.  
W. Sweeney WR Engr. Assoc.  
C. Nelson Asst. Engr., WR  
D. Taylor Asst. Engr., WR  
Vacant Sr. S. II  
Vacant Asst. Engr., WR

6804  
RIGHT OF WAY  
Vacant Assoc. Land Right

6805  
ENVIRONMENTAL MONITORING  
AND ANALYSIS  
F. Bachmann Sr. WQ Engr.  
E. Hitt Assoc. Engr., WR  
J. Muziak Assoc. Engr., WR  
A. deRube Assoc. L&W Analyst  
R. Carman Assoc. Engr., WR  
J. Howell WR Engr. Assoc.  
W. Brudisno Assoc. Cont. Sys. Asst.  
R. Berry WR Tech. II  
L. Berry Staff Custodian  
S. Wells Jr. Engr. Tech.  
K. Soveri WR Tech. I

BIOLOGICAL MONITORING AND  
ANALYSIS  
H. Proctor Sr. WQ Biologist  
B. Fong Assoc. WQ Biologist  
J. Gower Assoc. WQ Biologist  
R. Brown Asst. WQ Biologist  
S. Katsubata WR Tech. II  
Vacant Asst. Engr., WR

6806  
ENVIRONMENTAL  
DOCUMENTATION  
E. Whiston Sr. Engr., WR  
J. Campbell Assoc. Engr., WR  
N. Meade Assoc. Engr., WR  
D. Fisher Assoc. Engr., WR  
A. Tatro Assoc. P&R Spec.  
M. Haring WR Engr. Assoc.  
H. Glos Researcher  
S. Hitt Asst. Engr., WR  
M. Conkey E. S. I  
J. Chin Jr. Civil Engr.  
Y. Dunbar Ecological Tech.  
Vacant E. S. I

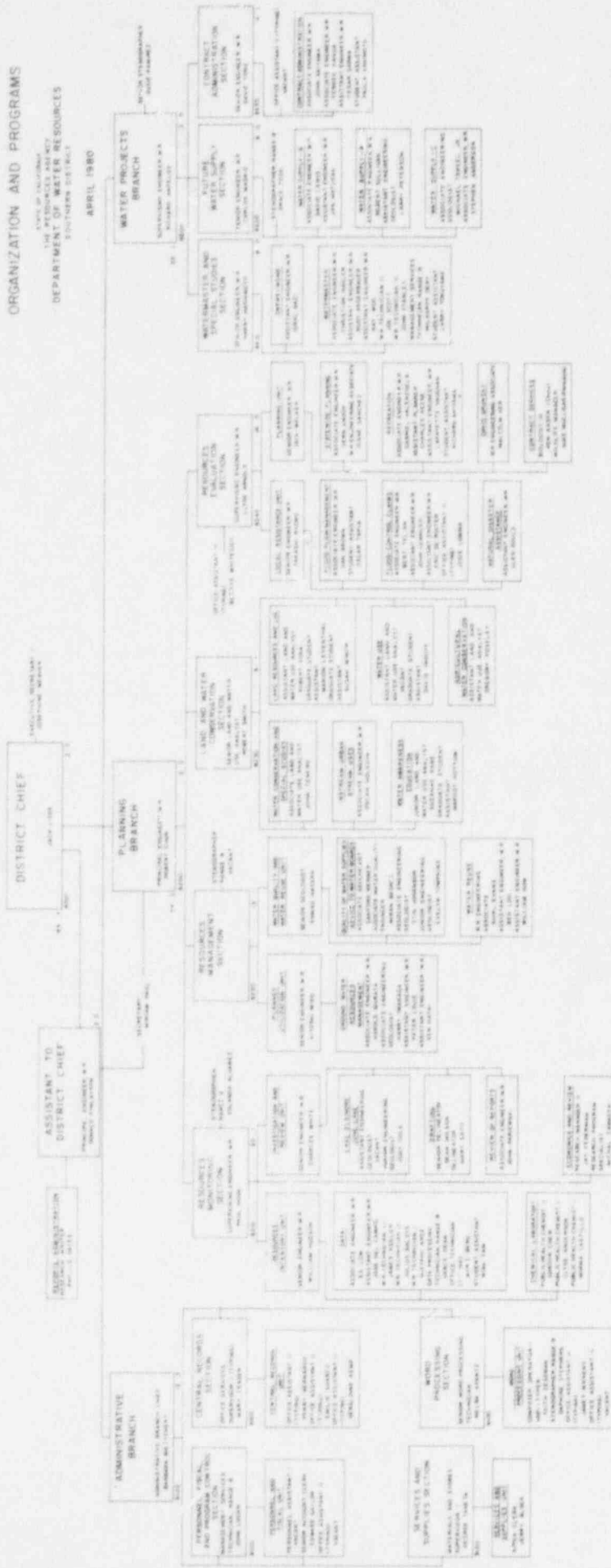
1000

STATE OF CALIFORNIA  
THE RESOURCES AGENCY  
ORGANIZATION OF THE SAN JOAQUIN DISTRICT  
DEPARTMENT OF WATER RESOURCES

# ORGANIZATION AND PROGRAMS

THE RESOURCE AGENCY  
DEPARTMENT OF WATER RESOURCES  
SOUTHERN DISTRICT

APRIL 1980



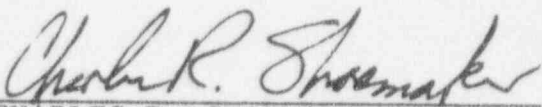
VERIFICATION

I, CHARLES R. SHOEMAKER, verify under penalty of perjury that the following is true and correct:

I am a Deputy Director of the State of California Department of Water Resources and as such am authorized to make this verification on behalf of the Department of Water Resources.

I have read the foregoing supplemental answers to interrogatories and know the contents thereof. I am informed and believe that the answers are true and correct.

Executed at Sacramento, California, on January 23, 1981.

  
\_\_\_\_\_  
CHARLES R. SHOEMAKER  
Deputy Director  
Department of Water Resources

CERTIFICATE OF SERVICE

I hereby certify that copies of the SECOND SUPPLEMENTAL ANSWERS  
OF DEPARTMENT OF WATER RESOURCES TO "FIRST SET OF INTERROGATORIES  
PROPOUNDED TO STATE OF CALIFORNIA" and this certificate were served upon  
each of the following by deposit in the United States mail, first class  
postage prepaid, this 13th day of February, 1980 *mg*

Hon. Marshall E. Miller  
Chairman  
Atomic Safety and Licensing Board  
U.S. Nuclear Regulatory Commission  
Washington, D.C. 20555

Hon. Seymour Wenner  
Atomic Safety and Licensing Board  
4807 Morgan Drive  
Chevy Chase, Maryland 20015

Hon. Sheldon J. Wolfe  
Atomic Safety and Licensing Board  
U.S. Nuclear Regulatory Commission  
Washington, D.C. 20555

Atomic Safety and  
Licensing Board Panel  
U.S. Nuclear Regulatory Commission  
Washington, D.C. 20555

Docketing and Service Section  
Office of the Secretary  
U.S. Nuclear Regulatory Commission  
Washington, D.C. 20555

Joseph J. Saunders, Esq.  
Mark Levin, Esq.  
Antitrust Division  
U.S. Department of Justice  
Washington, D.C. 20530

Joseph Rutberg, Esq.  
Benjamin H. Vogler, Esq.  
Jack R. Goldberg, Esq.  
David J. Evans, Esq.  
NRC Staff Counsel  
U.S. Nuclear Regulatory Commission  
Washington, D.C. 20555

Jerome Saltzman, Chief  
Antitrust and Indemnity Group  
U.S. Nuclear Regulatory Commission  
Washington, D.C. 20555

Philip A. Crane, Jr., Esq.  
Jack F. Fallin, Jr., Esq.  
Glen West, Esq.  
Pacific Gas and Electric Company  
77 Beale Street, 31st Floor  
San Francisco, California 94106

Morris M. Doyle, Esq.  
Terry J. Houlihan, Esq.  
William H. Armstrong, Esq.  
McCutchen, Doyle, Brown & Enersen  
Three Embarcadero Center  
San Francisco, California 94111

Meredith J. Watts, Attorney  
Donn P. Pickett, Esq.  
Jane E. Cosgriff, Attorney  
McCutchen, Doyle, Brown & Enersen  
Three Embarcadero Center  
San Francisco, California 94111



Malcolm H. Furbish, Esq.  
Vice President and General Counsel  
Pacific Gas and Electric Company  
77 Beale Street, 31st Floor  
San Francisco, California 94106

Richard L. Meiss, Esq.  
Pacific Gas and Electric Company  
77 Beale Street, 31st Floor  
San Francisco, California 94106

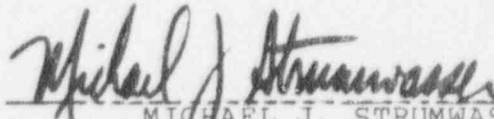
George Spiegel, Esq.  
Robert C. McDiarmid, Esq.  
Daniel I. Davidson, Esq.  
Thomas Trauger, Esq.  
John Michael Adragna, Esq.  
Spiegel & McDiarmid  
2600 Virginia Avenue, N.W.  
Washington, D.C. 20037

Sandra J. Strebel, Esq.  
Peter K. Matt, Esq.  
Bonnie S. Blair, Esq.  
Stephen C. Nichols, Esq.  
Spiegel & McDiarmid  
2600 Virginia Avenue, N.W.  
Washington, D.C. 20037

Clarice Turney, Esq.  
Office of the City Attorney  
3900 Main Street  
Riverside, California 92521

Gordon W. Hoyt  
Utilities Director  
City of Anaheim  
P.O. Box 3222  
Anaheim, California 92803

Everett C. Ross, Director  
Public Utilities Commission  
City Hall  
3900 Main Street  
Riverside, California 92501

  
-----  
MICHAEL J. STRUMWASSER  
Deputy Attorney General