

FLYING DUTCHMAN

ITEM NO.	NO. REQD.	PART NO.	DESCRIPTION	WGT.
1	6410		PIPE 10" DIA. 30' LONG SEE DET. A DNG. 189	
1	251		6" STAINLESS STEEL W/PIPE 6410TA C-378	
1	25		8" PG. PART 25 MALE G. 4 1/2"	
1	64108		PART SPEAK-A-B (SEE A-3 DET. A DNG. 189)	
7	2		TYPE B1G 7/8" FLAT 3 1/2" x 5" LG (BEND TO PIPE RADIUS)	

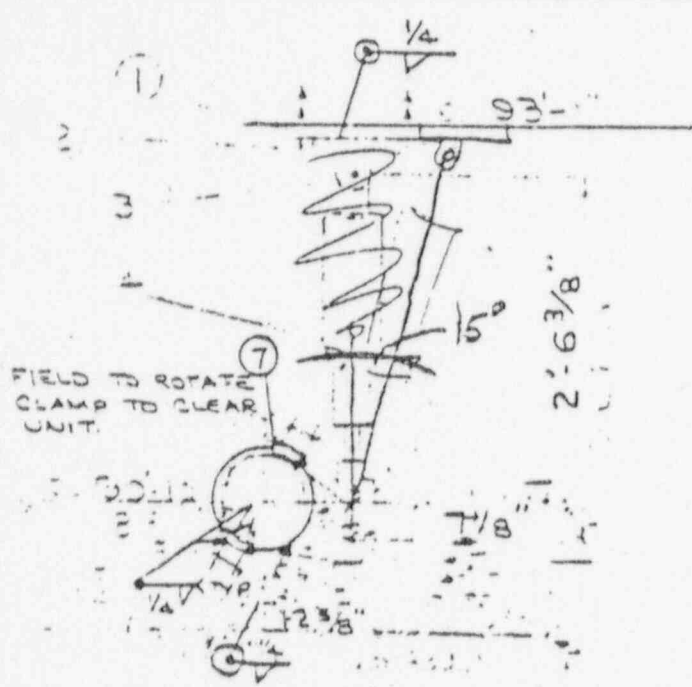
DESCRIPTION

REV. DATE

ADDED ITEM #7 & REV'D WELDS

DESCRIPTION

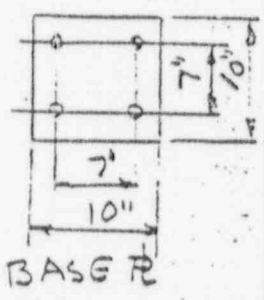
REV. DATE



FIELD TO ROTATE CLAMP TO CLEAR UNIT.

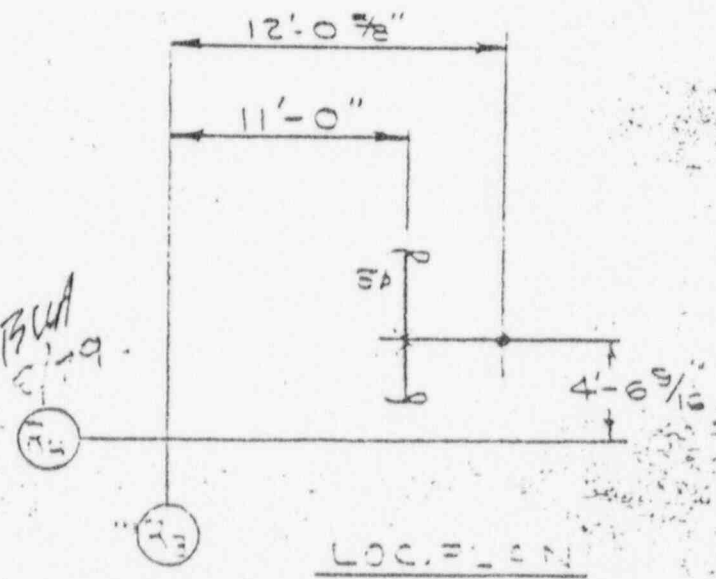
F=2'0 6\"/>

TOTAL:



BASE PL

DC BWA
C-19



LOC. = E. N.

8002150 541

CONDENSER

PIPELINE

MARK NO. 634-R2 NO. REQD.

BERGEN-PATERSON PIPESUPPORT CORP.

- ☐ CARBIDE WELD
- ☐ WELD WIRE
- ☐ PITTSBURGH, PA.
- ☐ NEWSTEAD, N. Y.
- ☐ SAN FRANCISCO, CALIF.



DATE	BY	CHKD	APP'D
17 NOV. 67	H	S	
JOB NO. P-60-1262-Y1			
DWS. NO. 180-1			