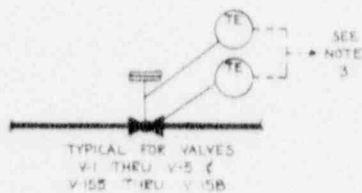
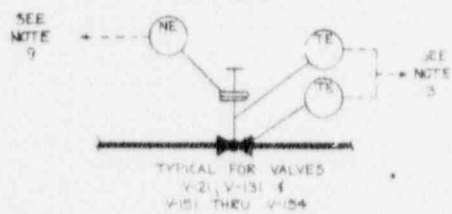


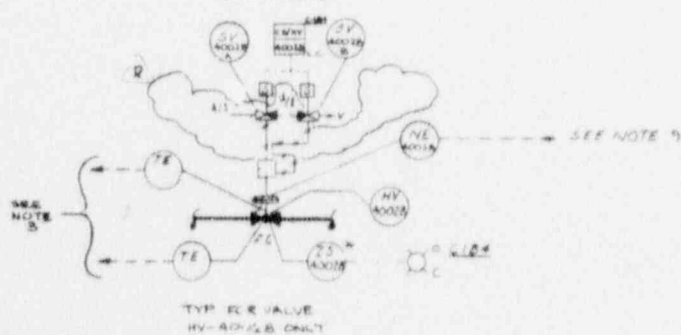
DETAIL 1



DETAIL 2



DETAIL 3



TO & FROM  
PRIMARY  
CLOSED LOOP  
SAMPLE SYSTEM

SODIUM TANK CAR  
RECEIVING AND  
UNLOADING STATION

800110686

NOTES CONT'D.

10. BECKTEL WILL FURNISH THE HEDL HALF OF EACH GRAYLOC & INJECTOR.

REVIEW SHEET NO.

REVISIONS

REV. NO.	DESCRIPTION
H-4-11033	REID REACTOR SECONDARY SODIUM PROCESSING SYSTEM SYS. B1
H-4-11035	REID IDS 4 PRIMARY SODIUM STORAGE PROCESSING SYSTEM SYS. B1
H-4-11048	REID PRIMARY SODIUM SAMPLING CLOSED LOOP SYSTEM #1 SYS. B5
H-4-11049	REID PRIMARY SODIUM SAMPLING CLOSED LOOP SYSTEM #2 SYS. B5
H-4-11050	REID PRIMARY SODIUM SAMPLING CLOSED LOOP SYSTEM #3 SYS. B5
H-4-11051	REID PRIMARY SODIUM SAMPLING CLOSED LOOP SYSTEM #4 SYS. B5
H-4-11121	REID ARGON DISTRIBUTION OUTSIDE CONTAINMENT SYS. B6
H-4-11123	REID ARGON DISTRIBUTION TO REACTOR SERVICE BLDG. 4717 SYS. B2

NOTES:

1. \* DESIGNATES INSTRUMENTS SUPPLIED WITH SUPPLIERS EQUIPMENT.
2. ALL ALARMS ON LOCAL BOARDS WILL BE CONNECTED TO COMMON ALARM ANNUNCIATOR IN THE CONTROL ROOM.
3. SEE ELECTRICAL HEAT CONTROL DIAGRAM DRAWINGS H-4-11031 THRU H-4-11040.
4. ALL NUMBERS FOR MANUALLY OPERATED VALVES ARE PRECEDED BY "B1-".
5. THE ISOLATION VALVES ON THE SODIUM TANK CAR, VALVES V-165 AND V-166, ARE PROVIDED WITH THE TANK CAR.
6. FOR SYMBOLS AND USAGE, SEE LEGEND SHEETS: H-4-11093, 11094, 11095, 11096, 11098 AND 11099.
7. ALL SODIUM VALVES ARE SUPPLIED BY HEDL. PNEUMATIC OPERATORS ARE SUPPLIED WITH THE VALVE. REACH RODS WITH THE LOCAL POSITION INDICATORS ARE SUPPLIED BY BECKTEL. FOR VALVE INSTRUMENTATION SEE THE VALVE INSTRUMENTATION TABLE AND VALVE DETAILS.
8. AUTOMATIC SEQUENCE CONTROL AND INTERLOCKING OF EQUIPMENT IS SHOWN ON H-4-11256.
9. ALL DIFFERENT LEAK DETECTORS AT RHT, RFA TO INDICATORS IN PANEL 0312. WHEN A TOWER ALARM IS DERIVED AND KEYS TO CONTROL FROM PANEL 0312, SEE H-4-11111 (1) (1).

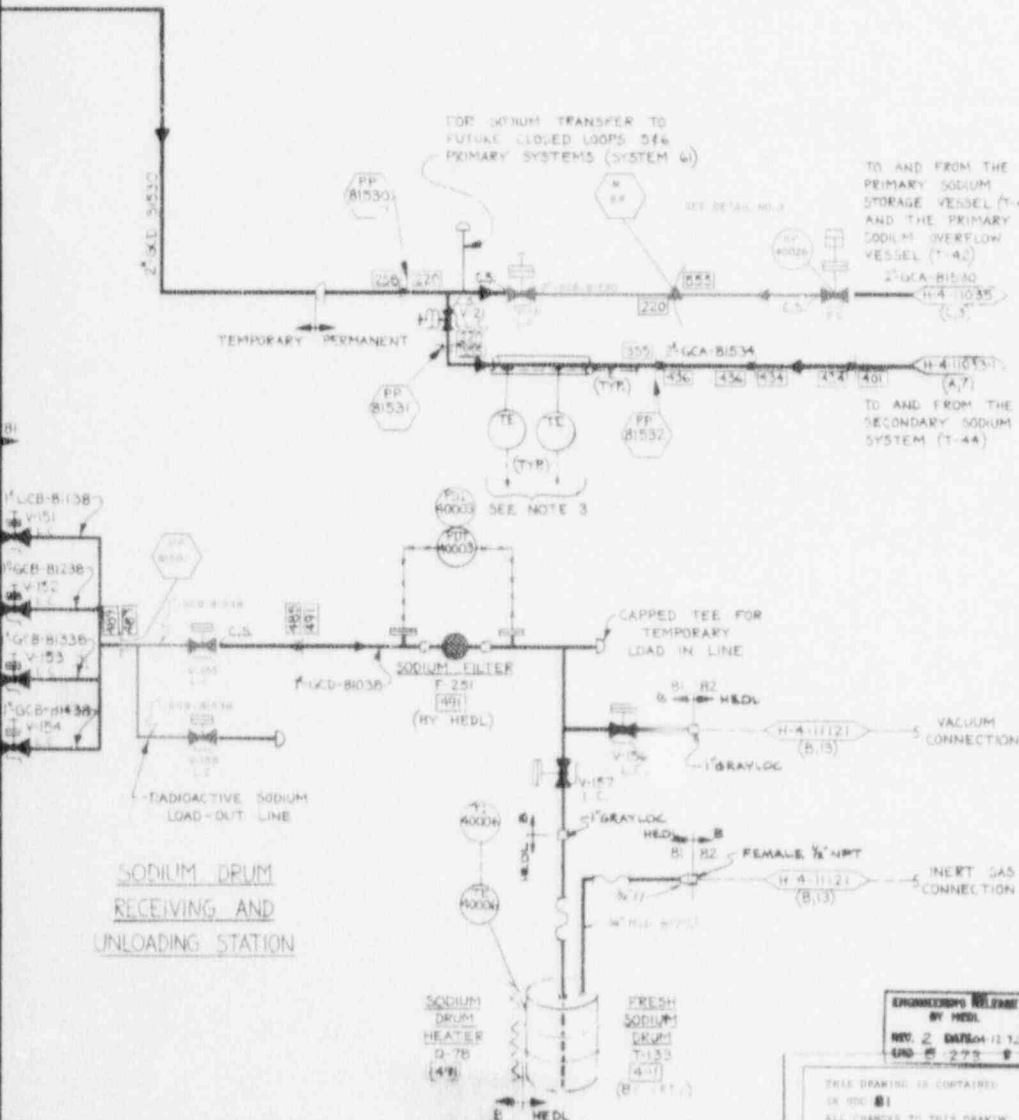
REV. NO.	DESCRIPTION	DATE	BY	CHKD.
1	REVISED PER RCH H-4-11111			
2	REVISED PER RCH H-4-11111			
3	REVISED PER RCH H-4-11111			
4	REVISED PER RCH H-4-11111			
5	REVISED PER RCH H-4-11111			
6	REVISED PER RCH H-4-11111			
7	REVISED PER RCH H-4-11111			
8	REVISED PER RCH H-4-11111			
9	REVISED PER RCH H-4-11111			
10	REVISED PER RCH H-4-11111			
11	REVISED PER RCH H-4-11111			
12	REVISED PER RCH H-4-11111			
13	REVISED PER RCH H-4-11111			
14	REVISED PER RCH H-4-11111			
15	REVISED PER RCH H-4-11111			
16	REVISED PER RCH H-4-11111			
17	REVISED PER RCH H-4-11111			
18	REVISED PER RCH H-4-11111			
19	REVISED PER RCH H-4-11111			
20	REVISED PER RCH H-4-11111			
21	REVISED PER RCH H-4-11111			
22	REVISED PER RCH H-4-11111			
23	REVISED PER RCH H-4-11111			
24	REVISED PER RCH H-4-11111			
25	REVISED PER RCH H-4-11111			
26	REVISED PER RCH H-4-11111			
27	REVISED PER RCH H-4-11111			
28	REVISED PER RCH H-4-11111			
29	REVISED PER RCH H-4-11111			
30	REVISED PER RCH H-4-11111			

U. S. ATOMIC ENERGY COMMISSION  
 RICHMOND OPERATIONS OFFICE  
 Hartford Engineering Development Laboratory  
 BECKTEL  
 PIPING & INSTRUMENT DIAGRAM  
 SODIUM RECEIVING & UNLOADING  
 SYSTEM  
 FAST FLUX TEST FACILITY  
 H-4-11030

CUM  
 INJECTION  
 (706)

ERT GAS  
 INJECTION  
 (706)

SODIUM TANK  
 CAR OIL  
 HEATER  
 Q-15  
 (258)  
 (BY HEDL)



ENGINEERING RELEASE  
 BY HEDL  
 REV. 2 DATE 04-11-11  
 EPO - 275

THIS DRAWING IS CONTAINED  
 IN SET #1  
 ALL CHANGES TO THIS DRAWING  
 MUST BE PROCESSED USING THE  
 SOG REVISED PROCESS.